

**UNITED STATES  
DEPARTMENT OF THE INTERIOR  
BUREAU OF LAND MANAGEMENT**

**APPLICATION FOR PERMIT TO DRILL OR DEEPEN**

## 1a. TYPE OF WORK

DRILL ☒DEEPEN ☐

## b. TYPE OF WELL

OIL WELL ☐GAS WELL ☒OTHER ☐SINGLE ZONE ☒MULTIPLE ZONE ☐

## 2. NAME OF OPERATOR

McELVAIN OIL &amp; GAS PROPERTIES, INC.

## 3. ADDRESS AND TELEPHONE NO.

P.O. Box 2148 Santa Fe, New Mexico 87504 (505) 982-1935

## 4. LOCATION OF WELL (Report location clearly and in accordance with any State requirements.)

At surface

1465' FNL &amp; 815' FWL Section 34, T32N, R9W, NMPM

At proposed prod. zone

## 14. DISTANCE IN MILES AND DIRECTION FROM NEAREST TOWN OR POST OFFICE\*

18.4 miles northeast of Aztec, New Mexico

## 15. DISTANCE FROM PROPOSED\*

LOCATION TO NEAREST  
PROPERTY OR LEASE LINE, FT.

1187'

(Also to nearest drilg. unit line, if any)

## 18. DISTANCE FROM PROPOSED LOCATION TO NEAREST WELL, DRILLING, COMPLETED,

OR APPLIED FOR, ON THIS LEASE

1785'

**This action is subject to technical and procedural review pursuant to 43 CFR 3165.3 or appeal pursuant to 43 CFR 3165.4.**

## 21. ELEVATIONS (Show whether DF, GR, or GR)

6656' GR

## 23.

**PROPOSED CASING AND CEMENTING PROGRAM**

SIZE OF HOLE	GRADE, SIZE OF CASING	WEIGHT PER FOOT	SETTING DEPTH	QUANTITY OF CEMENT
12 1/4"	9 5/8" K/J-55	36	300-300	160 sxs Class G.2%CaCl.1/4#/sx celloflake
8 3/4"	7" K/J-55	20	3900-4050	400 sxs Class G Lite.100 sxs Class G neat
6 1/4"	4 1/2" K/J-55	10.5	6225	165 sxs Class G.4%gel.100 sxs Class G neat

McElvain Oil & Gas Properties, Inc. proposes to spud in the Nacimiento Formation and will drill a 12 1/4" hole to 300 feet. 9 5/8" casing will be run and cemented to surface. WOC 12 hours. Test casing and BOPE to 600 psig for 15 minutes. Drill a 8 3/4" hole to 4050 feet with a fresh water mud. No abnormal pressures or poisonous gases are anticipated. Adequate weight material will be on location to control any unforeseen flows from the Fruitland sands. Log well from TD to the base of the surface casing. Run 7" intermediate casing and cement to surface. WOC for 12 hours. Pressure test casing and BOPE to 1500 psig for 15 minutes. Drill a 6 1/4" hole with air & mist to 6225'. Log well from TD to the base of the intermediate casing. Run a 4 1/2" liner from 3900' to TD and cement in place. Move out drilling rig and move in completion unit. Test casing to 2500 psig. Run cased hole correlation logs. Perforate Mesaverde formation and stimulate with a fresh water based system.

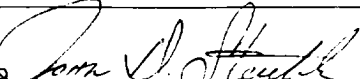
Surface ownership is Federal (BLM).

Access road and pipeline right of way included with this application.

IN ABOVE SPACE DESCRIBE PROPOSED PROGRAM: If proposal is to deepen, give data on present productive zone and proposed new productive zone. If proposal is to drill or deepen directionally, give pertinent data on subsurface locations and measured true vertical depths. Give blowout preventer program, if any.

## 24.

SIGNED



TITLE Agent

DATE September 23, 1996

(This space for Federal or State office use)

PERMIT NO.

APPROVAL DATE

Application approval does not warrant or certify that the applicant holds legal or equitable title to those rights in the subject lease which would entitle the applicant to conduct operations hereon.

CONDITIONS OF APPROVAL, IF ANY

**APPROVED  
AS AMENDED**

APPROVED BY

OCT 18 1996

TITLE

DATE

OCT 15 1996

**DISTRICT MANAGER**

NMOC.D

OIL CON. DIV.

OK

District I  
PO Box 1988, Hobbs, NM 88241-1988  
District II  
PO Drawer DD, Artesia, NM 88211-0719  
District III  
1000 Rio Bravo Rd., Aztec, NM 87410  
District IV  
PO Box 2088, Santa Fe, NM 87504-2088

State of New Mexico  
Energy, Minerals & Natural Resources Department

OIL CONSERVATION DIVISION  
PO Box 2088  
Santa Fe, NM 87504-2088

Form C-102

Revised February 21, 1994

Instructions on back

Submit to Appropriate District Office

State Lease - 4 Copies

Fee Lease - 3 Copies

RECEIVED  
OCT 1 8 1996

☐ AMENDED REPORT

WELL LOCATION AND ACREAGE DEDICATION PLAT

API Number 30-045-29411	Pool Code 72319	Pool Name Blanco Mesa Verde
Property Code 19673	Property Name Sandstone Com	Well Number 1
OGRID No. 22044	Operator Name McELVAIN OIL AND GAS PROPERTIES	Elevation 6656

10 Surface Location

UL or lot no. E	Section 34	Township 32 N	Range 9 W	Lot Ida	Feet from the 1465	North/South line North	Feet from the 815	East/West line West	County S.J.
--------------------	---------------	------------------	--------------	---------	-----------------------	---------------------------	----------------------	------------------------	----------------

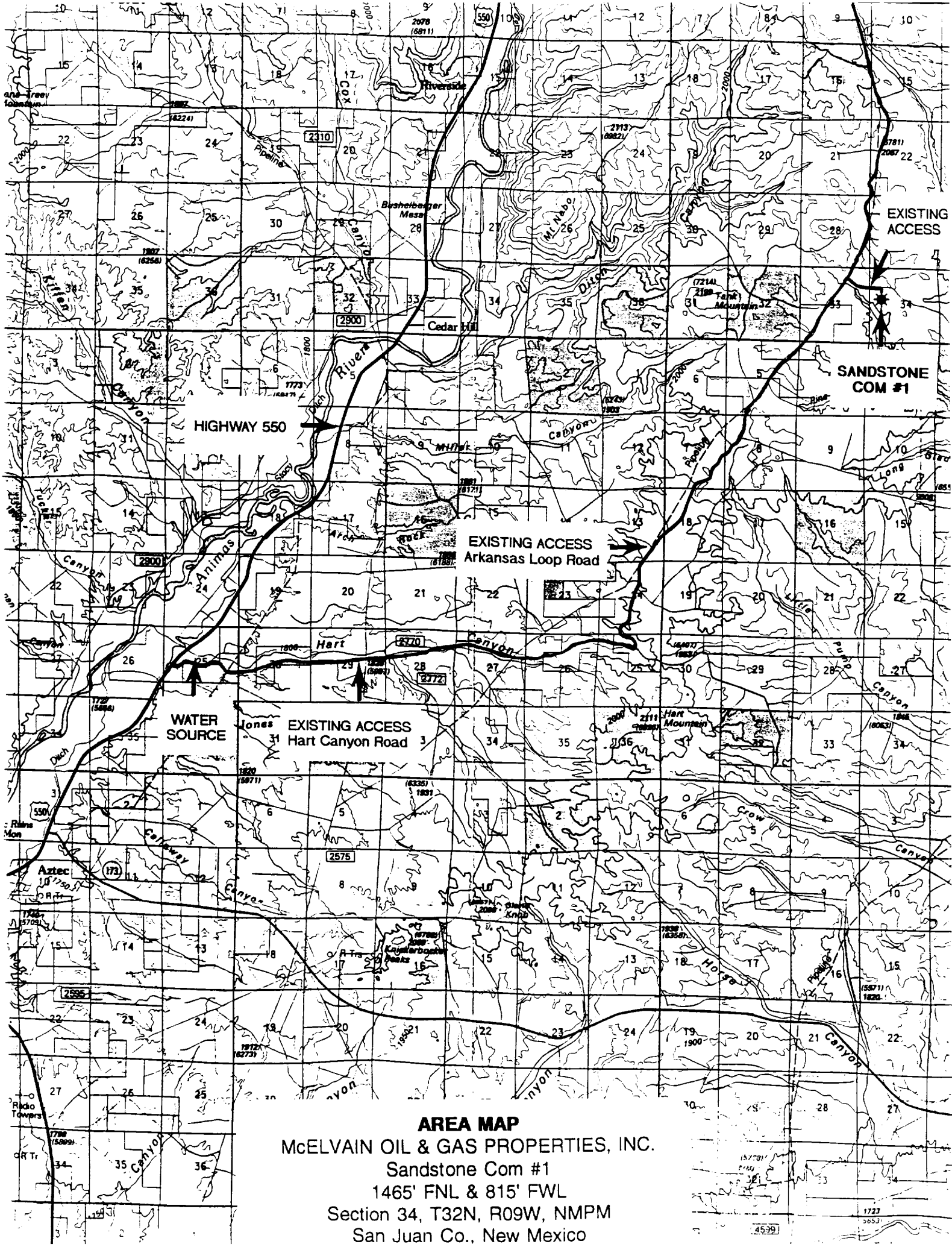
11 Bottom Hole Location If Different From Surface

UL or lot no.	Section	Township	Range	Lot Ida	Feet from the	North/South line	Feet from the	East/West line	County
---------------	---------	----------	-------	---------	---------------	------------------	---------------	----------------	--------

12 Dedicated Acres 307.25	13 Joint or Infill	14 Consolidation Code	15 Order No.
------------------------------	--------------------	-----------------------	--------------

NO ALLOWABLE WILL BE ASSIGNED TO THIS COMPLETION UNTIL ALL INTERESTS HAVE BEEN CONSOLIDATED  
OR A NON-STANDARD UNIT HAS BEEN APPROVED BY THE DIVISION

16 Diagram showing well location and acreage. Dimensions: 1465', 815', 2535.76', 2535.72', 2535.90', 2632.74'. Acreage: 4973.08', 34, SF079048, SF079148, 2624.87'.	17 OPERATOR CERTIFICATION I hereby certify that the information contained herein is true and complete to the best of my knowledge and belief. Signature: John D. Steuble Printed Name: John D. Steuble Agent Title 09/23/96 Date
18 SURVEYOR CERTIFICATION I hereby certify that the well location shown on this plat was plotted from field notes of actual surveys made by me or under my supervision, and that the same is true and correct to the best of my belief. 9-16-96 Date of Survey Signature and Seal of Professional Surveyor: [Seal: NEALE C. EDWARDS, 8857, 685] Certificate Number	



**AREA MAP**  
McELVAIN OIL & GAS PROPERTIES, INC.  
Sandstone Com #1  
1465' FNL & 815' FWL  
Section 34, T32N, R09W, NMPM  
San Juan Co., New Mexico

VICINITY MAP  
McELVAIN OIL & GAS PROPERTIES, INC.  
Sandstone Com #1  
1465' FNL & 815' FWL  
Section 34, T32N, R09W, NMPM  
San Juan Co., New Mexico

