

UNITED STATES  
DEPARTMENT OF THE INTERIOR  
BUREAU OF LAND MANAGEMENT

APPLICATION FOR PERMIT TO DRILL OR DEEPEN

1a. TYPE OF WORK DRILL <input checked="" type="checkbox"/> DEEPEN <input type="checkbox"/>		5. LEASE DESIGNATION AND SERIAL NO. NM 015545	
b. TYPE OF WELL OIL WELL <input type="checkbox"/> GAS WELL <input checked="" type="checkbox"/> OTHER <input type="checkbox"/>		8. FARM OR LEASE NAME, WELL NO. Brown #1A	
2. NAME OF OPERATOR McELVAIN OIL & GAS PROPERTIES, INC. 22c44		9. API WELL NO. 20969	
3. ADDRESS AND TELEPHONE NO. P.O. Box 2148 Santa Fe, New Mexico 87504 (505) 982-1935		10. FIELD AND POOL, OR WILDCAT Blanco Mesaverde	
4. LOCATION OF WELL (Report location clearly and in accordance with any State requirements.) At surface 1560' FSL & 1785' FEL Section 9, T32N, R10W, NMPM		11. SEC. T, R, M, OR BLK AND SURVEY OR AREA Section 9 T32N, R10W, NMPM	
14. DISTANCE IN MILES AND DIRECTION FROM NEAREST TOWN OR POST OFFICE* 13.8 miles northeast of Aztec, New Mexico		12. COUNTY San Juan	
15. DISTANCE FROM PROPOSED LOCATION TO NEAREST PROPERTY OR LEASE LINE, FT. (Also to nearest drip unit line, if any) 298'		13. STATE New Mexico	
16. NO. OF ACRES IN LEASE 178.45		17. NO. OF ACRES ASSIGNED TO THIS WELL 334.06	
18. DISTANCE FROM PROPOSED LOCATION TO NEAREST WELL, DRILLING, COMPLETED, OR APPLIED FOR, ON THIS LEASE, FT. 2592'		20. ROTARY OR CABLE TOOLS ROTARY	
21. ELEVATIONS (Show whether DF, RT, GR, etc.) 6802' GL		22. APPROX. DATE WORK WILL START* May, 1997	

RECEIVED  
JUL 24 1997

OIL CON. DIV.

This action is subject to technical and procedural review pursuant to 43 CFR 3165.3 and appeal pursuant to 43 CFR 3165.4.

PROPOSED CASING AND CEMENT  
DRILLING OPERATIONS AUTHORIZED ARE  
SUBJECT TO COMPLIANCE WITH ATTACHED  
"GENERAL REQUIREMENTS"

SIZE OF HOLE	GRADE, SIZE OF CASING	WEIGHT PER FOOT	SETTING DEPTH	QUANTITY OF CEMENT
12 1/4"	9 5/8" J/K-55	36	360'	195 sxs Class G..2%CaCl..1/4#/sk celloflake
8 3/4"	7" J/K-55	20	3871'	425 sxs 65/35 Class G Poz..100 sxs Class G
6 1/4"	4 1/2" J/K-55	10.5	6284'	185 sxs 65/35 Class G Poz..100 sxs Class G

McElvain Oil & Gas Properties, Inc. proposes to spud in the Nacimiento Formation and will drill a 12 1/4" hole to 360 feet. 9 5/8" casing will be run and cemented to surface. WOC 12 hours. Test casing and BOPE to 600 psig for 15 minutes. Drill a 8 3/4" hole to 3871' with fresh water mud. No abnormal pressures or poisonous gases are anticipated. Adequate weight material will be on location to control any unforeseen flows from the Fruitland sands. Log well from TD to the base of the surface casing. Run 7" intermediate casing and cement to surface. WOC for 12 hours. Pressure test casing and BOPE to 1500 psig for 15 minutes. Drill a 6 1/4" hole with air & mist to 6284'. Log well from TD to the base of the intermediate casing. Run a 4 1/2" liner from 3750' to TD and cement in place. Move out drilling rig and move in completion unit. Test casing to 2500 psig. Run cased hole correlation logs. Perforate the Mesaverde formation and stimulate with a fresh water based system.

Surface ownership is Federal (BLM).

Access road and pipeline right of way included with this application.

McElvain Oil & Gas Properties, Inc. is securing a Designation of Operator from Burlington Resources for the drilling of this well.

IN ABOVE SPACE DESCRIBE PROPOSED PROGRAM: If proposal is to deepen, give data on present productive zone and proposed new productive zone. If proposal is to drill or deepen directionally, give pertinent data on subsurface locations and measured true vertical depths. Give blowout preventer program, if any.

24.

SIGNED John V. Steubel TITLE AGENT DATE April 23, 1997

(This space for Federal or State office use)

PERMIT NO. \_\_\_\_\_ APPROVAL DATE JUL 22 1997

Application approval does not warrant or certify that the applicant holds legal or equitable title to those rights in the subject lease which would entitle the applicant to conduct operations thereon.

CONDITIONS OF APPROVAL, IF ANY:

APPROVED BY [Signature] TITLE [Signature] DATE JUL 22 1997

NMOCD

District I  
PO Box 1988, Hobbs, NM 88241-1988  
District II  
PO Drawer DD, Artesia, NM 88211-0719  
District III  
1000 Rio Brazos Rd., Aztec, NM 87410  
District IV  
PO Box 2088, Santa Fe, NM 87504-2088

State of New Mexico  
Energy, Minerals & Natural Resources Department

OIL CONSERVATION DIVISION  
PO Box 2088  
Santa Fe, NM 87504-2088

Form C-102  
Revised February 21, 1994  
Instructions on back  
Submit to Appropriate District Office  
State Lease - 4 Copies  
Fee Lease - 3 Copies

ST APR 24 PM 3:25

☐ AMENDED REPORT

WELL LOCATION AND ACREAGE DEDICATION PLAT

API Number 30-645-2472		Pool Code 72319	Pool Name Blanco Mesaverde
Property Code 26969	Property Name Brown Fed.		Well Number 1A
OGRID No. 22044	Operator Name MCELVAIN OIL & GAS PROPERTIES		Elevation 6802'

10 Surface Location

UL or lot no. J	Section 9	Township 32-N	Range 10-W	Lot Idn	Feet from the 1560	North/South line South	Feet from the 1785	East/West line East	County S.J.
--------------------	--------------	------------------	---------------	---------	-----------------------	---------------------------	-----------------------	------------------------	----------------

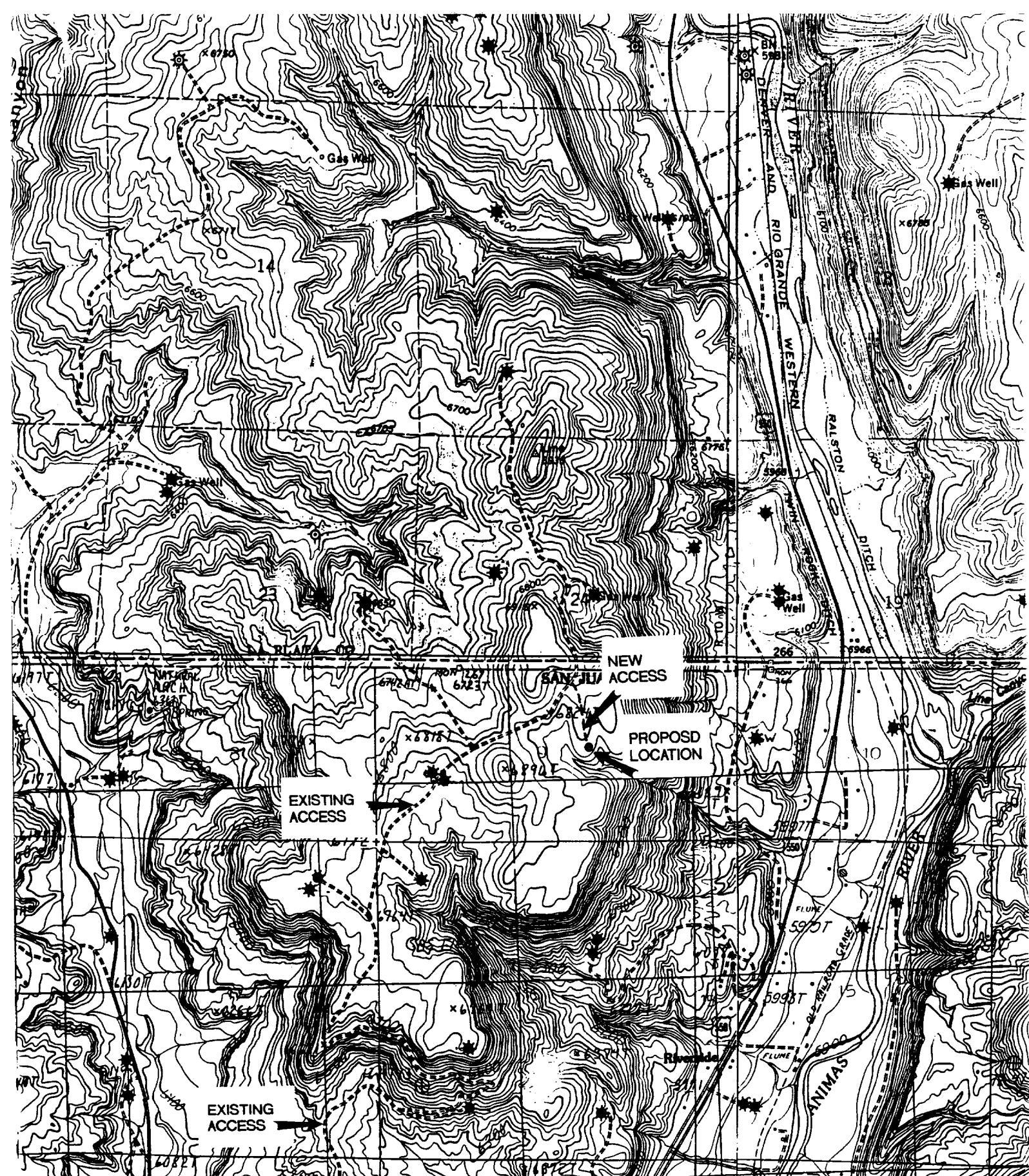
11 Bottom Hole Location If Different From Surface

UL or lot no.	Section	Township	Range	Lot Idn	Feet from the	North/South line	Feet from the	East/West line	County
---------------	---------	----------	-------	---------	---------------	------------------	---------------	----------------	--------

12 Dedicated Acres 5/334.06	13 Joint or Infill Y	14 Consolidation Code	15 Order No.
--------------------------------	-------------------------	-----------------------	--------------

NO ALLOWABLE WILL BE ASSIGNED TO THIS COMPLETION UNTIL ALL INTERESTS HAVE BEEN CONSOLIDATED  
OR A NON-STANDARD UNIT HAS BEEN APPROVED BY THE DIVISION

16						17 OPERATOR CERTIFICATION I hereby certify that the information contained herein is true and complete to the best of my knowledge and belief  Signature John D. Steuble Printed Name Agent Title 04/17/97 Date	
 187.44' 5309.04' 189.42' NM015545 8 7 6 5 1785' 1560' 2586.54' 5303.76' 9 EXISTING MV WELL 10 11 12						18 SURVEYOR CERTIFICATION I hereby certify that the well location shown on this plat was plotted from field notes of actual surveys made by me or under my supervision, and that the same is true and correct to the best of my belief. 4/02/97 Date of Survey Signature and Seal of Professional Surveyor NEALE C. EDWARDS NEW MEXICO 6857 6857 Certificate Number	



**VICINITY MAP**  
McELVAIN OIL & GAS PROPERTIES, INC.  
Brown #1A  
1560' FSL & 1785' FEL  
Section 9, T32N, R10W, NMPM  
San Juan County, New Mexico