

UNITED STATES
DEPARTMENT OF THE INTERIOR
BUREAU OF LAND MANAGEMENT

APPLICATION FOR PERMIT TO DRILL, DEEPEN, OR PLUG BACK

1a. Type of Work DRILL	5. Lease Number SF-078459B Unit Reporting Number	
1b. Type of Well GAS	6. If Indian, All. or Tribe	
2. Operator BURLINGTON RESOURCES 14538 Oil & Gas Company	7. Unit Agreement Name Allison Unit	
3. Address & Phone No. of Operator PO Box 4289, Farmington, NM 87499 (505) 326-9700	8. Farm or Lease Name 6784 Allison Unit 9. Well Number 8A	
4. Location of Well 930' FSL, 1650' FEL Latitude 36° 58.6, Longitude 107° 33.0	10. Field, Pool, Wildcat 72319 Blanco Mesa Verde 71599 Basin Dakota 11. Sec., Twn, Rge, Mer. (NMPM) 0 Sec 15, T-32-N, R-7-W API # 30-045-29502	
14. Distance in Miles from Nearest Town 5 miles to Tiffany	12. County San Juan	13. State NM
15. Distance from Proposed Location to Nearest Property or Lease Line 930'	17. Acres Assigned to Well 313.34 E/2 313.34 E/2	
16. Acres in Lease	18. Distance from Proposed Location to Nearest Well, Drlg, Compl, or Applied for on this Lease 750'	
19. Proposed Depth 8526'	20. Rotary or Cable Tools Rotary	
21. Elevations (DF, FT, GR, Etc.) 6854' GR	22. Approx. Date Work will Start	
23. Proposed Casing and Cementing Program See Operations Plan attached	DRILLING OPERATIONS AUTHORIZED ARE SUBJECT TO COMPLIANCE WITH ATTACHED "GENERAL REQUIREMENTS"	
24. Authorized by: <u>[Signature]</u> Regulatory/Compliance Administrator	7-25-97 Date	

PERMIT NO. _____

APPROVAL DATE

NOV 07 1997

APPROVED BY _____

TITLE _____

DATE NOV 07 1997

Archaeological Report to be submitted - TECH REPORT # 150 DATED 12-22-92

Threatened and Endangered Species Report submitted by Ecosphere

NOTE: This format is issued in lieu of U.S. BLM Form 3160-3. NOS dated 06-26-97

NMOC

District I
PO Box 1980, Hobbs, NM 88241-1980
District II
PO Drawer DD, Artesia, NM 88211-0719
District III
1000 Rio Brazos Rd., Aztec, NM 87410
District IV
PO Box 2088, Santa Fe, NM 87504-2088

State of New Mexico
Energy, Minerals & Natural Resources Department

OIL CONSERVATION DIVISION
PO Box 2088
Santa Fe, NM 87504-2088

Form C-1
Revised February 21, 19
Instructions on back
Submit to Appropriate District Office
State Lease - 4 Copies
Fee Lease - 3 Copies

57 AUG 20 PM 3:48

☐ AMENDED REPORT

WELL LOCATION AND ACREAGE DEDICATION PLAT

API Number 30-045-29502	Pool Code 72319/71599	Pool Name Blanco Mesaverde/Basin Dakota
Property Code 6784	Property Name Allison Unit	Well Number 8A
OGRID No. 14538	Operator Name BURLINGTON RESOURCES OIL & GAS COMPANY	Elevation 6854'

10 Surface Location

UL or lot no.	Section	Township	Range	Lot Ida	Feet from the	North/South line	Feet from the	East/West line	County
0	15	32-N	7-W		930	South	1650	East	S.J.

11 Bottom Hole Location If Different From Surface

UL or lot no.	Section	Township	Range	Lot Ida	Feet from the	North/South line	Feet from the	East/West line	County

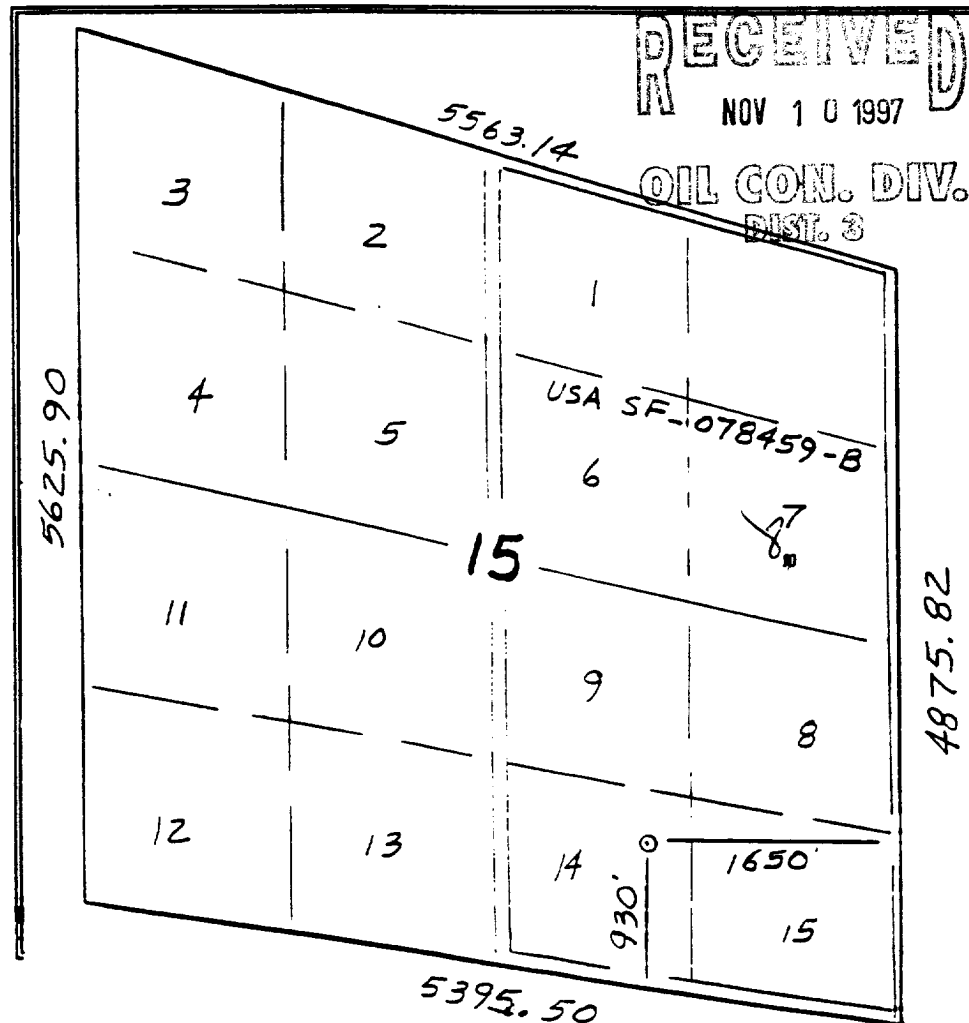
12 Dedicated Acres
MV-E/313.34
DK-E/313.34

13 Joint or Infill

14 Consolidation Code

15 Order No.

NO ALLOWABLE WILL BE ASSIGNED TO THIS COMPLETION UNTIL ALL INTERESTS HAVE BEEN CONSOLIDATED
OR A NON-STANDARD UNIT HAS BEEN APPROVED BY THE DIVISION



17 OPERATOR CERTIFICATION

I hereby certify that the information contained herein is true and complete to the best of my knowledge and belief.

Peggy Bradfield
Signature
Peggy Bradfield
Printed Name
Regulatory Administrator
Title
7-25-97
Date

18 SURVEYOR CERTIFICATION

I hereby certify that the well location shown on this plat was plotted from field notes of actual surveys made by or under my supervision, and that the same is true and correct to the best of my belief.

6/17/97

Date of Survey
Signature and Seal of Professional Surveyor:
NEALE C. EDWARDS
NEW MEXICO
6857
6857
Certificate Number

OPERATIONS PLAN

Well Name: Allison Unit #8A
Location: 930' FSL, 1650' FEL Sec 15, T-32-N, R-7-W
 San Juan County, NM
 Latitude 36° 58.6, Longitude 107° 33.0
Formation: Blanco Mesa Verde/Basin Dakota
Elevation: 6854' GL

<u>Formation Tops:</u>	<u>Top</u>	<u>Bottom</u>	<u>Contents</u>
Surface	San Jose	2481'	
Ojo Alamo	2481'	3149'	aquifer
Fruitland	3149'	3606'	gas
Pictured Cliffs	3606'	3786'	gas
Lewis	3786'	4568'	gas
Intermediate TD	3886'		
Mesa Verde	4568'	4698'	gas
Chacra	4698'	5769'	
Massive Cliff House	5769'	5814'	gas
Menefee	5814'	6031'	gas
Massive Point Lookout	6031'	7408'	gas
Gallup	7408'	8146'	gas
Greenhorn	8146'	8331'	gas
Dakota	8331'		gas
TD (4 1/2" liner)	8526'		

Logging Program:

Cased hole - CBL - TD to 200' above TOC, GR/CNL across MV/Dk

Mud Program:

<u>Interval</u>	<u>Type</u>	<u>Weight</u>	<u>Vis.</u>	<u>Fluid Loss</u>
0- 200'	Spud	8.4-9.0	40-50	no control
200-3886'	LSND	8.4-9.0	30-60	no control
3886-8526'	Gas	n/a	n/a	n/a

Pit levels will be visually monitored to detect gain or loss of fluid control.

Casing Program (as listed, the equivalent, or better):

<u>Hole Size</u>	<u>Depth Interval</u>	<u>Csq. Size</u>	<u>Wt.</u>	<u>Grade</u>
12 1/4"	0' - 200'	9 5/8"	32.3#	WC-50
8 3/4"	0' - 3886'	7"	20.0#	J-55
6 1/4"	3786' - 6855'	4 1/2"	10.5#	J-55
6 1/4"	6855' - 8526'	4 1/2"	11.6#	J-55

Tubing Program:

0' - 8526' 2 3/8" 4.70# EUE

