

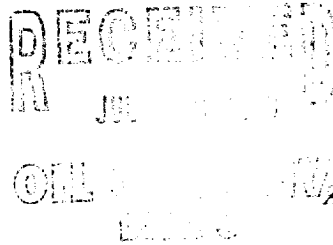


NEW MEXICO ENERGY, MINERALS
& NATURAL RESOURCES DEPARTMENT

OIL CONSERVATION DIVISION
2040 South Pacheco Street
Santa Fe, New Mexico 87505
(505) 827-7131

June 29, 1998

Burlington Resources Oil & Gas Company
P. O. Box 4289
Farmington, New Mexico 87499-4289
Attention: Peggy Bradfield



Administrative Order NSL-4082

Dear Ms. Bradfield:

Reference is made to your application submitted to the New Mexico Oil Conservation Division ("Division") on June 24, 1998 for an exception to the well location requirements provided within the "*Special Rules and Regulations for the Blanco-Mesaverde Pool/Special Rules and Regulations for the Basin-Dakota Pool*," as promulgated by Division Order No. R-10987, for Burlington Resources Oil & Gas Company's ("Burlington") proposed Allison Unit Well No. 24-A (API No. 30-045-29614) to be drilled at an unorthodox gas well location in both the Blanco-Mesaverde and Basin-Dakota Pools 1145 feet from the South line and 1305 feet from the East line (Unit P) of Section 7, Township 32 North, Range 6 West, NMPM, San Juan County, New Mexico.

Gas production from the Blanco-Mesaverde Pool is to be included in an existing standard 318.27-acre lay-down gas spacing and proration unit comprising Lots 6 and 7, the E/2 SW/4, and the SE/4 (S/2 equivalent) of Section 7, which is currently dedicated to Burlington's Allison Unit Well No. 24 (API No. 30-045-13187), located at a standard gas well location 890 feet from the South line and 990 feet from the West line (Lot 7/Unit M) of Section 7.

The S/2 equivalent of Section 7, being a standard 318.27-acre gas spacing and proration unit for the Basin Dakota Pool, is also to be dedicated to the proposed Allison Unit Well No. 24-A.

The application has been duly filed under the provisions of Division Rules 104.F and 605.B of the Rules and Regulations of the New Mexico Oil Conservation Division ("Division").

By the authority granted me under the provisions of Division Rule 104.F(2), the above-described unorthodox Blanco-Mesaverde "infill" gas well location and Basin-Dakota gas well location for the Allison Unit Well No. 24-A is hereby approved. Both of the aforementioned Allison Unit Well Nos. 24 and 24-A and both spacing units will be subject to all existing rules, regulations, policies, and procedures applicable to prorated gas pools in Northwest, New Mexico.

Sincerely,

Lori Wrotenbery
Director

LW/MES/kv

cc: New Mexico Oil Conservation Division - Aztec
U. S. Bureau of Land Management - Farmington

BURLINGTON RESOURCES

SAN JUAN DIVISION

Sent Federal Express

Ms. Lori Wrotenbery, Director
New Mexico Oil Conservation Division
2040 South Pacheco
Santa Fe, New Mexico 87505

RECEIVED
JUN 24 1998
OIL CON. DIV.
DIST. 3

Re: Allison Unit #24A
1145'FSL, 1305'FEL Section 7, T-32-N, R-6-W, San Juan County, NM
30-045-29614

Dear Ms. Wrotenbery:

Burlington Resources is applying for administrative approval of an unorthodox gas well location for the Blanco Mesa Verde and Basin Dakota pools. This application for the referenced location is for topographic and archaeological reasons, and especially at the request of the landowner.

Production from the Blanco Mesa Verde pool is to be included in a standard 318.27 acre gas spacing and proration unit comprising of the south half (S/2) of Section 7 which is currently dedicated to the Allison Unit #24 (30-045-13187) located at 890'FSL, 990'FWL of Section 7. Production from the Basin Dakota is to be included in a standard 318.27 acre gas spacing and proration unit comprising of the south half (S/2) of Section 7. The Allison Unit #24 was drilled in 1960 to a total depth in the Dakota, found non-commercial, and plugged and abandoned in 1960.

The following attachments are for your review:

1. Application for Permit to Drill.
2. Completed C-102 at referenced location.
3. Offset operators/owners plat.
4. 7.5 minute topographic map, and enlargement of the map to define topographic features.

We appreciate your earliest consideration of this application.

Sincerely,



Peggy Bradfield
Regulatory/Compliance Administrator

xc: NMOCD - Aztec District Office
Bureau of Land Management - Farmington District Office

District I
PO Box 1980, Hobbs, NM 88241-1980
District II
511 South First, Artesia, NM 88210
District III
1000 Rio Brazos Rd., Aztec, NM 87410
District IV
2040 South Pacheco, Santa Fe, NM 87505

State of New Mexico
Energy, Minerals & Natural Resources Department

OIL CONSERVATION DIVISION
2040 South Pacheco
Santa Fe, NM 87505

RECEIVED
JUN 24 1998

Form C-101
Revised October 18, 1994
Instructions on back
Submit to Appropriate District Office
State Lease - 6 Copies
Fee Lease - 5 Copies
AMENDED REPORT

APPLICATION FOR PERMIT TO DRILL, RE-ENTER, DEEPEN, PLUG BACK, OR ADD A ZONE

¹ Operator Name and Address. Burlington Resources PO Box 4289, Farmington, NM 87499		² OGRID Number 14538
		³ API Number 30 - 045-
⁴ Property Code 6784	⁵ Property Name Allison Unit	⁶ Well No. 24A

⁷ Surface Location

UL or lot no.	Section	Township	Range	Lot Idn	Feet from the	North/South line	Feet from the	East/West line	County
P	7	32N	6W		1145	S	1305	E	SJ

⁸ Proposed Bottom Hole Location If Different From Surface

UL or lot no.	Section	Township	Range	Lot Idn	Feet from the	North/South line	Feet from the	East/West line	County
⁹ Proposed Pool 1 Basin Dakota					¹⁰ Proposed Pool 2 Blanco Mesa Verde				

¹¹ Work Type Code N	¹² Well Type Code G	¹³ Cable/Rotary Rotary	¹⁴ Lease Type Code Fee	¹⁵ Ground Level Elevation 6520'GR
¹⁶ Multiple Yes	¹⁷ Proposed Depth 8047	¹⁸ Formation MV/Dk	¹⁹ Contractor N/a	²⁰ Spud Date N/a

²¹ Proposed Casing and Cement Program

Hole Size	Casing Size	Casing weight/foot	Setting Depth	Sacks of Cement	Estimated TOC
12 1/4"	9 5/8"	32.3#	200'	188 cu.ft.	Surface
8 3/4"	7"	20.0#	3533'	929 cu.ft.	Surface
6 1/4"	4 1/2"	10.5#	3433-8047'	663 cu.ft.	TOC 3433'

²² Describe the proposed program. If this application is to DEEPEN or PLUG BACK give the data on the present productive zone and proposed new productive zone. Describe the blowout prevention program, if any. Use additional sheets if necessary.

11" 2000 psi minimum double gate BOP

Note: to facilitate higher hydraulic stimulation completion work, no liner hanger will be used. In its place, a long string of 4 1/2" casing will be run and cemented with a minimum of 100' of cement overlap between the 4 1/2" and 7" casing strings. After completion of the well, a 4 1/2" retrievable bridge plug will be set below the top of cement in the 4 1/2" x 7" overlap. The 4 1/2" casing will then be backed off above the top of cement in the 4 1/2" x 7" overlap and laid down. The liner top can then be pressure tested to ensure a seal between the liner top and the 7" casing has been achieved. The test pressure shall be the maximum anticipated pressure to which the seal will be exposed (700 psi for the Mesa Verde and 2500 psi for the Dakota). The 4 1/2" bridge plug will then be retrieved and the production tubing will be run to produce the well.

²³ I hereby certify that the information given above is true and complete to the best of my knowledge and belief.

Signature:

Printed name: Peggy Bradfield

Title: Regulatory/Compliance Administrator

Date: 06-11-98

Phone: 505-326-9700

OIL CONSERVATION DIVISION

Approved by:

Title:

Approval Date:

Expiration Date:

Conditions of Approval :
Attached ☐

District I
PO Box 1980, Hobbs, NM 88241-1980

State of New Mexico
Energy, Minerals & Natural Resources Department

For
Revised February
Instructions

District II
PO Drawer 00, Artesia, NM 88211-0719

Submit to Appropriate District
State Lease -
Fee Lease -

District III
1000 Rio Brazos Rd., Aztec, NM 87410

OIL CONSERVATION DIVISION
PO Box 2088
Santa Fe, NM 87504-2088

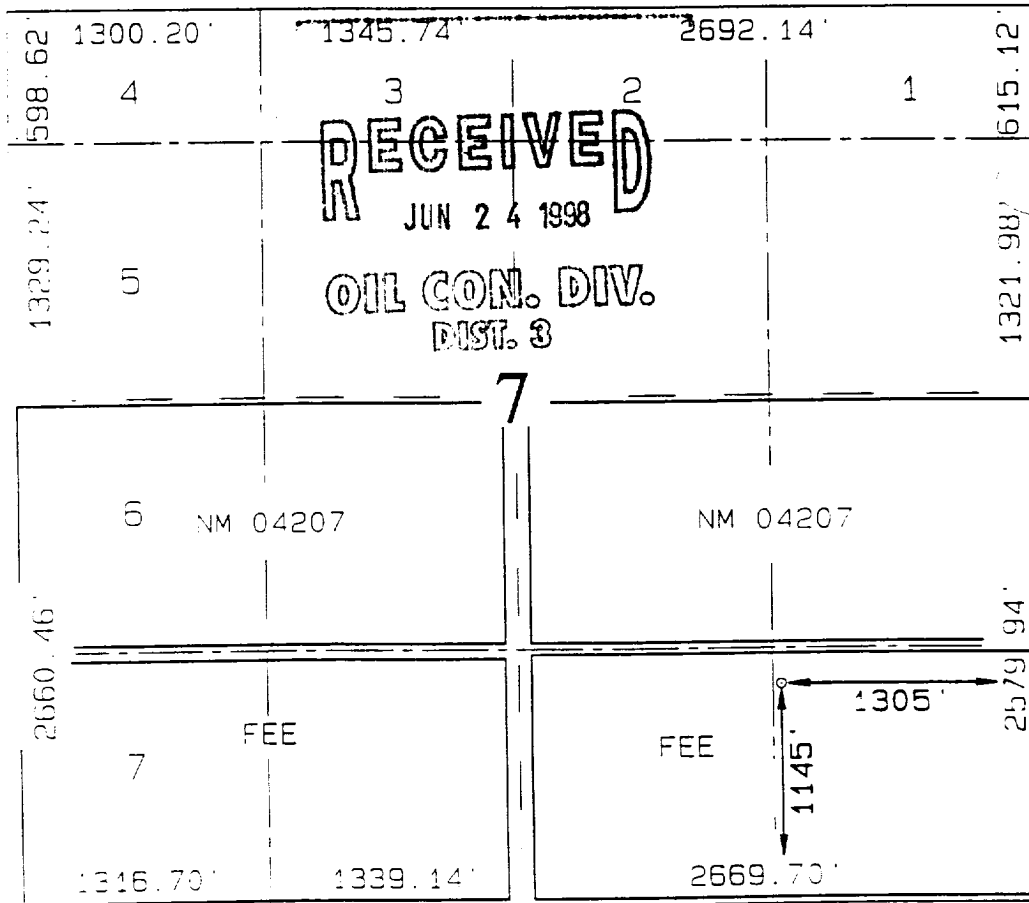
District IV
PO Box 2088, Santa Fe, NM 87504-2088

☐ AMENDED F

WELL LOCATION AND ACREAGE DEDICATION PLAT

1 API Number 30-045-		2 Pool Code 72319/71599		3 Pool Name Blanco Mesaverde/Basin Dakota						
4 Property Code 6784		5 Property Name ALLISON UNIT				6 Well Num 24A				
7 GRID No. 14538		8 Operator Name BURLINGTON RESOURCES OIL & GAS COMPANY				9 Elevati 6520				
10 Surface Location										
UL or lot no. D	Section 7	Township 32N	Range 6W	Lot Idn	Feet from the 1145	North/South line SOUTH	Feet from the 1305	East/West line EAST	SAN	
11 Bottom Hole Location If Different From Surface										
UL or lot no.	Section	Township	Range	Lot Idn	Feet from the	North/South line	Feet from the	East/West line		
12 Dedicated Acres MV-S/318.27 DK-S/318.27							13 Joint or Infill		14 Consolidation Code	15 Order No.

NO ALLOWABLE WILL BE ASSIGNED TO THIS COMPLETION UNTIL ALL INTERESTS HAVE BEEN CONSOLI
OR A NON-STANDARD UNIT HAS BEEN APPROVED BY THE DIVISION



17 OPERATOR CERTIFIC

I hereby certify that the information contains
true and complete to the best of my knowledge

Signature
Peggy Bradfield
Printed Name
Regulatory Administ
Title
6-11-98
Date

6-11-98
Date

18 SURVEYOR CERTIFIC

I hereby certify that the well location shown
was plotted from field notes of actual survey
or under my supervision and that the same is
correct to the best of my belief.

MAY 13, 1998
Date of Survey

Signature and Seal of Professional

NEALE C. EDWA.
NEW MEXICO
6857
Certificate Number

BURLINGTON RESOURCES OIL AND GAS COMPANY

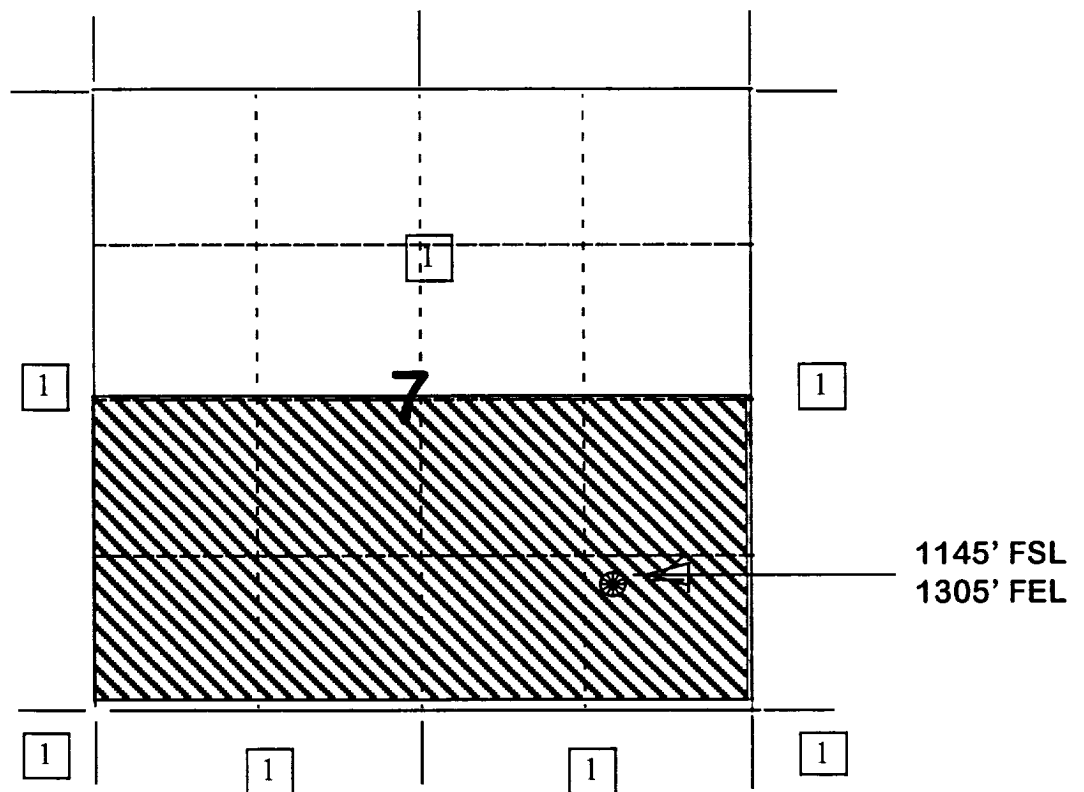
Allison Unit #24A

OFFSET OPERATOR/OWNER PLAT

Nonstandard Location

Mesaverde / Dakota Formations

Township 32 North, Range 6 West



1) Burlington Resources

