

UNITED STATES
DEPARTMENT OF THE INTERIOR
BUREAU OF LAND MANAGEMENT

SUBMIT IN
DUPLICATE

FORM APPROVED
OMB NO. 1004-0137
Expires: February 28, 1995

(See other instructions on
reverse side)

RECEIVED
BLM

5. LEASE DESIGNATION AND LEASE NO.

SF-078772

6. IF INDIAN, ALLOTTEE OR

WELL COMPLETION OR RECOMPLETION REPORT AND LOG*

98 DEC -4 PM 2:19

1a. TYPE OF WELL: OIL WELL GAS WELL DRY OTHER _____

7. UNIT AGREEMENT NAME

ROSA UNIT

b. TYPE OF COMPLETION:
 NEW WELL WORKOVER DEEPEN PLUG BACK DIFF RESVR. OTHER

070 FARMINGTON, NM

2. NAME OF OPERATOR

WILLIAMS PRODUCTION COMPANY

8. FARM OR LEASE NAME, WELL NO.

ROSA UNIT #151A

3. ADDRESS AND TELEPHONE NO.

P.O. BOX 3102 MS 37-2 TULSA, OK 74101 (918) 501-1133

9. API WELL NO.

30-045-29631

4. LOCATION OF WELL (Report location clearly and in accordance with any State requirements)*

At Surface 1940' FSL & 920' FWL
At top production interval reported below : At total depth:

10. FIELD AND POOL, OR WILDCAT

BLANCO MV

11. SEC., T., R., M., OR BLOCK AND

SURVEY OR AREA
NW/4 SW/4 SEC 33-32N-6W

14. PERMIT NO.

DATE ISSUED

12. COUNTY OR

SAN JUAN

13. STATE

NEW MEXICO

15. DATE
SPUDED
10-15-1998

16. DATE T.D.
REACHED
10-20-1998

17. DATE COMPLETED (READY TO PRODUCE)
11-17-1998

18. ELEVATIONS (DK, RKB, RT, GR, ETC.)*
6443' GR

19. ELEVATION CASINGHEAD

20. TOTAL DEPTH, MD & TVD
6134'

21. PLUG, BACK T.D., MD & TVD
6110'

22. IF MULTICOMP.
HOW MANY

23. INTERVALS
DRILLED BY

ROTARY TOOLS
X

CABLE TOOLS

24. PRODUCING INTERVAL(S), OF THIS COMPLETION - TOP, BOTTOM, NAME (MD AND TVD)*
BLANCO MV 5202' - 6018'

25. WAS DIRECTIONAL SURVEY MADE

26. TYPE ELECTRIC AND OTHER LOGS RUN
IES/GR and CDL/SNL

27. WAS WELL CORED
NO

28. CASING REPORT (Report all strings set in well)

CASING SIZE/GRADE	WEIGHT, LB/FT	DEPTH SET (MD)	HOLE SIZE	TOP OF CEMENT, CEMENTING RECORD	AMOUNT PULLED
9-5/8" K-55	36#	267'	12-1/4"	150 SX - SURFACE	
7" K-55	20#	3613'	8-3/4"	610 SX - SURFACE	

29. LINER RECORD

SIZE	TOP (MD)	BOTTOM (MD)	SACKS CEMENT*	SCREEN (MD)	SIZE	DEPTH SET (MD)	PACKER SET (MD)
4-1/2"	3491'	6134'	330 sx		2-3/8"	6006'	

31. PERFORATION RECORD (Interval, size, and number)

CH/Menefee: 5202', 04', 06', 18', 24', 48', 50', 5306', 08', 14', 5400', 02', 42', 46', 48', 50', 86', 90', 92', 94', 96', 98', 5500', 02', 04', 12', 14', 16', 18', 48', 50', 78', 80', 5656', 58', 60', 62' and 64'. Total of 38 (0.38") holes.

Pt Lookout: 5714', 17', 20', 23', 26', 29', 32', 35', 38', 41', 44', 47', 50', 53', 56', 59', 62', 64', 68', 78', 81', 84', 87', 90', 93', 98', 5808', 10', 20', 22', 49', 52', 64', 72', 76', 5904', 08', 12', 16', 38', 42', 56', 58', 6016' and 18'. Total of 45 (0.38") holes.

32. ACID, SHOT, FRACTURE, CEMENT SQUEEZE, ETC.

DEPTH INTERVAL (MD)	AMOUNT AND KIND OF MATERIAL USED
5202' - 5664'	80,000# 20/40 Sand in 2608 BBIs slick water
5714' - 6018'	80,000# 20/40 Sand in 2130 BBIs slick water

33. PRODUCTION

DATE OF FIRST PRODUCTION		PRODUCTION METHOD (Flowing, gas lift, pumping-size and type of pump)				WELL STATUS (PRODUCING OR SI)	
		Flowing				SHUT IN	
DATE OF TEST	TESTED	CHOKE SIZE	PROD'N FOR TEST PERIOD	OIL - BBL.	GAS - MCF	WATER - BBL.	GAS-OIL RATIO
11-29-1998	3 HRS				542		
FLOW TBG PRESS	CASING PRESSURE	CALCULATED 24-HOUR RATE		OIL - BBL.	GAS - MCF	WATER - BBL.	OIL GRAVITY-API (COR)
328#	802#				4339		

34. DISPOSITION OF GAS (Sold, used for fuel, vented, etc.): TO BE SOLD

TEST WITNESSED BY: CHIK CHALEY

35. LIST OF ATTACHMENTS: SUMMARY OF POROUS ZONES, WELLBORE DIAGRAM

36. I hereby certify that the foregoing and attached information is complete and correct as determined from all available records

SIGNED Susan Griguahn

TITLE Drilling Clerk

DATE December 1, 1998

ACCEPTED FOR RECORD

DEC 07 1998

FARMINGTON DISTRICT OFFICE

NMOCD

38 GEOLOGIC MARKERS

37 SUMMARY OF POROUS ZONES (Show all important zones of porosity and contents thereof; cored intervals; and all drill-stem tests, including depth interval tested, cushion used, time tool open, flowing and shut-in pressures, and recoveries):

FORMATION	TOP	BOTTOM	DESCRIPTION, CONTENTS, ETC.	NAME	TOP		
					NAME	MEASURED DEPTH	TRUE VERTICAL DEPTH
OJO ALAMO	2356'	2980'					
FRUITLAND	2980'	3195'					
PICTURED CLIFFS	3195'	5125'					
CLIFF HOUSE	5125'	5474'					
MENEFE	5474'	5705'					
POINT LOOKOUT	5705'	6105'					
MANCOS	6105'						

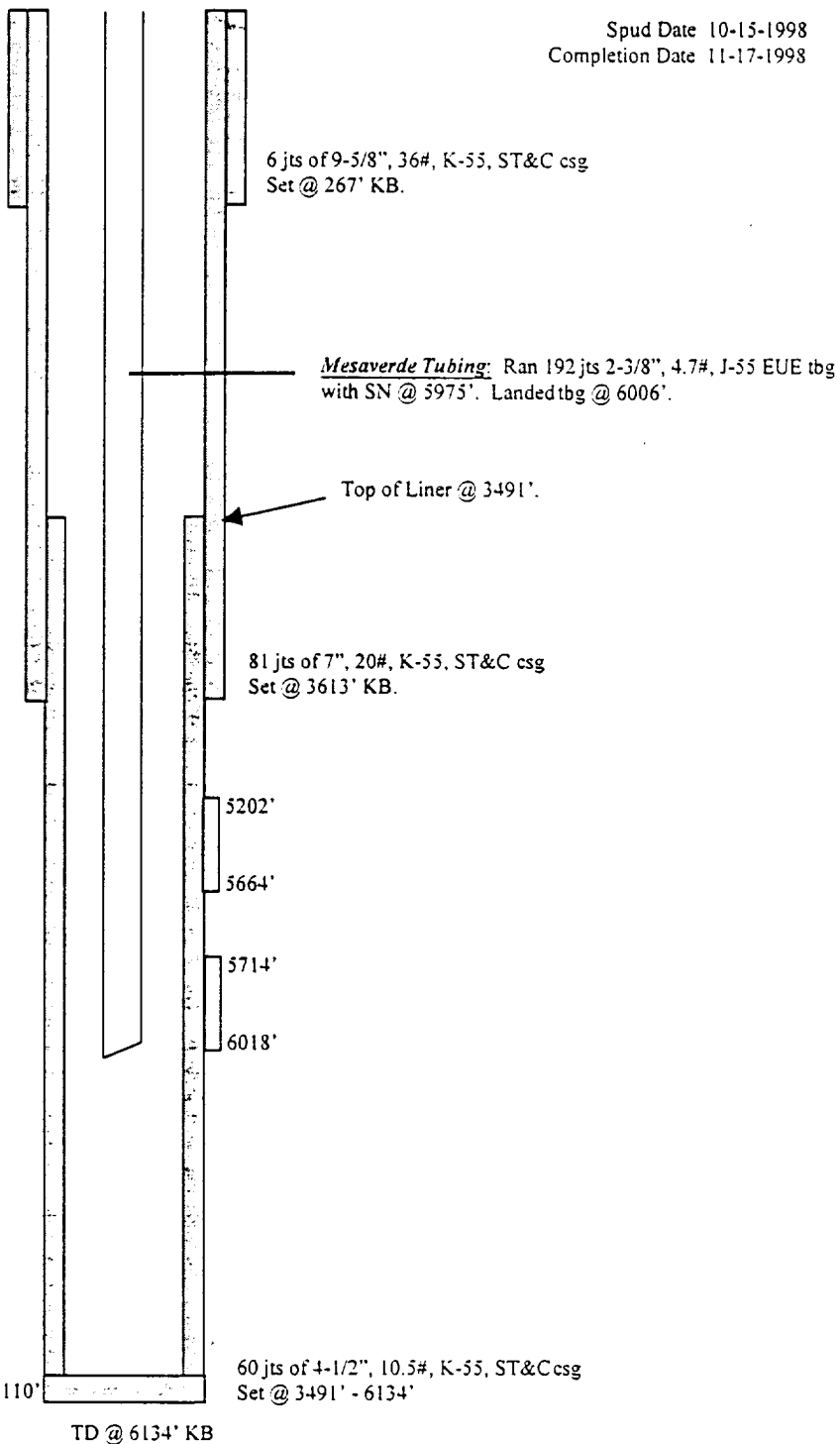
ROSA UNIT #151A BLANCO MESAVERDE

Location: 1940' FSL, 920' FWL
NW/4 SW/4 Section 33L, T32N, R6W
San Juan Co., NM

Spud Date 10-15-1998
Completion Date 11-17-1998

Elevation: 6443' GR
KB = 12'

Tops	Depth
Ojo Alamo	2356'
Kirtland	2490'
Fruitland	2980'
Pictured Cliffs	3195'
Cliff House	5125'
Menefee	5474'
Point Lookout	5705'
Mancos	6105'



STIMULATION

Cliff House/Menefee 5202' - 5664' (38, 0.36" holes)
80,000# of 20/40 sand in 2608BBI's slick water.

Point Lookout 5714' - 6018' (45, 0.36" holes)
80,000# of 20/40 sand in 2130BBI's slick water.

HOLE SIZE	CASING	CEMENT	CMT TOP
12 - 1/4 "	9 - 5/8 "	150 s x	SURFACE
8 - 3/4 "	7 "	610 s x	SURFACE
6 - 1/4 "	4 - 1/2 "	330 s x	3510' (C B L)