

UNITED STATES  
DEPARTMENT OF THE INTERIOR  
BUREAU OF LAND MANAGEMENTSUBMIT IN TRIPLICATE\*  
(Other instructions on  
reverse side)FORM APPROVED  
OMB NO. 1004-0136  
Expires: February 28, 1995

## APPLICATION FOR PERMIT TO DRILL OR DEEPEN

## 1a. TYPE OF WORK

DRILL ☒DEEPEN ☐

## b. TYPE OF WELL

OIL  
WELL ☐GAS  
WELL ☒OTHER ☐

## 2. NAME OF OPERATOR

THOMPSON ENGINEERING &amp; PRODUCTION CORP.

## 3. ADDRESS AND TELEPHONE NO.

7415 E. Main Farmington, New Mexico 87402

## 4. LOCATION OF WELL (Report location clearly and in accordance with any State requirements.)

At surface Unit M, 795' FSL &amp; 1255' FWL

At proposed prod. zone Same

## 14. DISTANCE IN MILES AND DIRECTION FROM NEAREST TOWN OR POST OFFICE\*

14 miles South of Ignacio, Colorado

## 15. DISTANCE FROM PROPOSED\*

LOCATION TO NEAREST  
PROPERTY OR LEASE LINE, FT.  
(Also to nearest drig. unit line, if any)

795'

18. DISTANCE FROM PROPOSED LOCATION\*  
TO NEAREST WELL, DRILLING, COMPLETED,  
OR APPLIED FOR, ON THIS LEASE, FT.

500'

## 16. NO. OF ACRES IN LEASE

150.80

## 19. PROPOSED DEPTH

3400'

17. NO. OF ACRES ASSIGNED  
TO THIS WELL

310.80 S/2

## 20. ROTARY OR CABLE TOOLS

Rotary

## 21. ELEVATIONS (Show whether DF, RT, GR, etc.)

6640' GL

## 22. APPROX. DATE WORK WILL START\*

August 1998

## 23.

## PROPOSED CASING AND CEMENTING PROGRAM

SIZE OF HOLE	GRADE SIZE OF CASING	WEIGHT PER FOOT	SETTING DEPTH	QUANTITY OF CEMENT
12-1/4"	9-5/8"	36#, J/K-55	350'	185 sx Cl"B" Circ. to surface
8-3/4"	7"	20#, J/K-55	3190'	L-450 sx 65/35 POZ; T-150sx Cl"B"
6-1/4"	5-1/2"	15.5# Liner	3170' - TD	**

This casing is subject to technical and  
procedural review pursuant to 43 CFR 3165.3  
and appeal pursuant to 43 CFR 3165.4.DRILLING OPERATIONS AUTHORIZED ARE  
SUBJECT TO COMPLIANCE WITH ATTACHED  
"GENERAL REQUIREMENTS"

- \*\* If the coal is cleated a 5-1/2" 15.5# liner will be run in the open hole  
without being cemented.  
If the coal is not cleated, the well will be stimulated and open hole completed.

Thompson Engineering proposes to drill a vertical well at the above location in  
accordance with the attached Operations and Multi-Point Surface Use Plans.

Attached find the pipeline survey for ROW footages.

Note: This well was previously archaeologically surveyed and inspected by the BLM  
under the Phillips Petroleum Co. name of San Juan 32-7 Fed Com #33.

IN ABOVE SPACE DESCRIBE PROPOSED PROGRAM: If proposal is to deepen, give data on present productive zone and proposed new productive zone. If proposal is to drill or  
deepen directionally, give pertinent data on subsurface locations and measured and true vertical depths. Give blowout preventer program, if any.

## 24.

SIGNED Paul C. Thompson TITLE President DATE 6/12/98

(This space for Federal or State office use)

PERMIT NO. \_\_\_\_\_ APPROVAL DATE JUN 23 1998

Application approval does not warrant or certify that the applicant holds legal or equitable title to those rights in the subject lease which would entitle the applicant to conduct operations thereon.  
CONDITIONS OF APPROVAL, IF ANY:

APPROVED BY

/S/ Duane W. Spencer

TITLE

DATE

JUN 29 1998

/S/ Duane W. Spencer

\*See Instructions On Reverse Side

District I  
P.O. Box 1780, Hobbs, NM 88241-1780  
District II  
811 South First, Artesia, NM 88210  
District III  
1000 Rio Brazos Rd., Aztec, NM 87410  
District IV  
2040 South Pacheco, Santa Fe, NM 87505

State of New Mexico  
Energy, Minerals & Natural Resources Department

OIL CONSERVATION DIVISION  
2040 South Pacheco  
Santa Fe, NM 87505

RECEIVED

JUN 16 PM 12:39

Form C-102  
Revised October 18, 1994  
Instructions on back  
Submit to Appropriate District Office  
State Lease - 4 Copies  
Fee Lease - 3 Copies

☐ AMENDED REPORT

070 PACHICO, NM

WELL LOCATION AND ACREAGE DEDICATION PLAT

30-045- <sup>17</sup> Number 29633	<sup>1</sup> Pool Code 71629	<sup>1</sup> Pool Name Basin Fruitland Coal
<sup>4</sup> Property Code 23493	<sup>4</sup> Property Name Middle Mesa Com	<sup>8</sup> Well Number 3
<sup>1</sup> OCRID No. 037581	<sup>4</sup> Operator Name Thompson Engineering & Production Corp.	<sup>8</sup> Elevation 6640'

<sup>10</sup> Surface Location

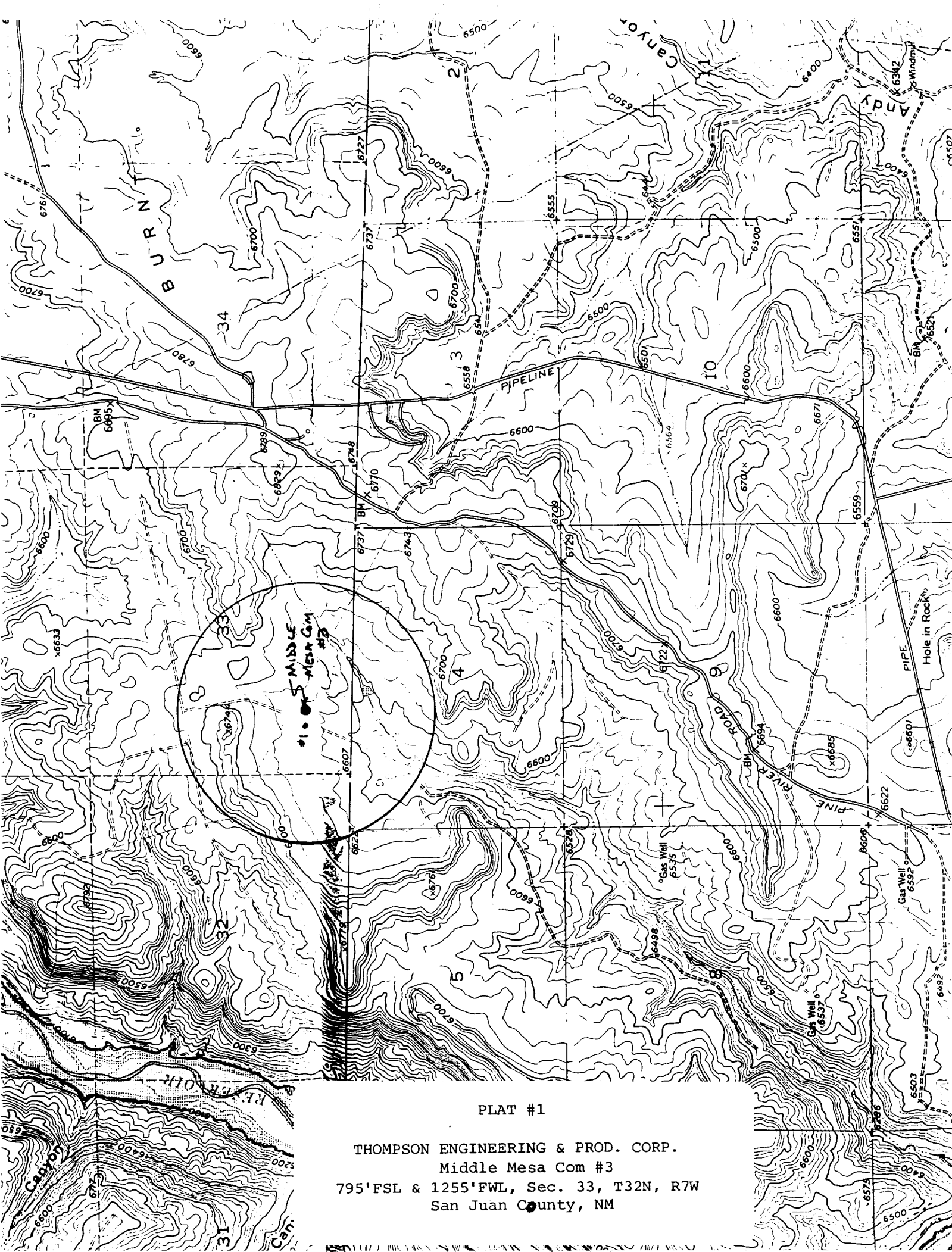
Ul. or lot no. M	Section 33	Township 32N	Range 7W	Lot Idn	Feet from the 795'	North/South line SOUTH	Feet from the 1255'	East/West line WEST	County SAN JUAN
---------------------	---------------	-----------------	-------------	---------	-----------------------	---------------------------	------------------------	------------------------	--------------------

<sup>11</sup> Bottom Hole Location If Different From Surface

Ul. or lot no. M	Section	Township	Range	Lot Idn	Feet from the	North/South line	Feet from the	East/West line	County
<sup>12</sup> Dedicated Acres 310.80	<sup>12</sup> Joint or Infill N	<sup>12</sup> Consolidation Code	<sup>12</sup> Order No.						

NO ALLOWABLE WILL BE ASSIGNED TO THIS COMPLETION UNTIL ALL INTERESTS HAVE BEEN CONSOLIDATED OR A NON-STANDARD UNIT HAS BEEN APPROVED BY THE DIVISION

16	5314.98'	RECEIVED JUL 1 1998 OIL CON. DIV. DIST. 3	17 OPERATOR CERTIFICATION I hereby certify that the information contained herein is true and complete to the best of my knowledge and belief  Paul C. Thompson Signature Paul C. Thompson Printed Name President Title 6/12/98 Date
	SEC 33		
NM-65906 150.80 acres	5012.70'		
1255'	795'		
5334.12'			



PLAT #1

THOMPSON ENGINEERING & PROD. CORP.  
Middle Mesa Com #3  
795' FSL & 1255' FWL, Sec. 33, T32N, R7W  
San Juan County, NM