

UNITED STATES
DEPARTMENT OF THE INTERIOR
BUREAU OF LAND MANAGEMENT

APPLICATION FOR PERMIT TO DRILL OR DEEPEN

1a. TYPE OF WORK

DRILL ☒DEEPEN ☐

b. TYPE OF WELL

OIL
WELL ☐GAS
WELL ☒OTHER ☐SINGLE
ZONE ☒MULTIPLE
ZONE ☐

2. NAME OF OPERATOR

McElvain Oil & Gas Properties, Inc.

3. ADDRESS AND TELEPHONE NO.

1050 17th Street, Suite 710 Denver, CO 80202

4. LOCATION OF WELL (Report location clearly and in accordance with any State requirements.)

At surface

790' FSL - 1560' FWL

At proposed prod. zone

Same

14. DISTANCE IN MILES AND DIRECTION FROM NEAREST TOWN OR POST OFFICE*

13.8 miles northeast of Aztec, NM

15. DISTANCE FROM PROPOSED*

LOCATION TO NEAREST
PROPERTY OR LEASE LINE, FT.
(Also to nearest drilg. unit line, if any)

790'

16. NO. OF ACRES IN LEASE

155.61

17. NO. OF ACRES ASSIGNED
TO THIS WELL

334.06

18. DISTANCE FROM PROPOSED LOCATION*
TO NEAREST WELL, DRILLING, COMPLETED,
OR APPLIED FOR, ON THIS LEASE, FT.

600'

19. PROPOSED DEPTH

6250'

20. ROTARY OR CABLE TOOLS

Rotary

21. ELEVATIONS (Show whether DF, RT, GR, etc.)

6768' GL, 6766' GR

22. APPROX. DATE WORK WILL START*

July 1998

23.

PROPOSED CASING AND CEMENTING PROGRAM

SIZE OF HOLE	GRADE SIZE OF CASING	WEIGHT PER FOOT	SETTING DEPTH	QUANTITY OF CEMENT
12.250"	9.625" x J-55	36	360'	230.10 cuft to circulate
8.750"	7.000" x J-55	20	3837'	874.50 cuft to circulate
6.250"	4.500" x J-55	10.5	3750'-6250'	447.30 cuft to circulate

McElvain Oil & Gas Properties, Inc. proposes to spud in the Nacimiento Formation and will drill a 12 1/4" hole to 360 feet. 9 5/8" casing will be run and cemented to surface. WOC 12 hours. Test casing and BOPE to 600 psig for 15 minutes. Drill a 8 3/4" hole to 3837' with fresh water mud. No abnormal pressures or poisonous gases are anticipated. Adequate weight material will be on location to control any unforeseen flows from the Fruitland sands. Log well from TD to the base of the surface casing. Run 7" intermediate casing and cement to surface. WOC for 12 hours. Pressure test casing and BOPE to 1500 psig for 15 minutes. Drill a 6 1/4" hole with air & mist to 6250'. Log well from TD to the base of the intermediate casing. Run a 4 1/2" liner from 3750' to TD and cement in place. Move out drilling rig move in completion unit. Test casing to 2500 psig. Run cased hole correlation logs. Perforate the Mesaverde formation and stimulate with a fresh water based system.

Surface ownership is Federal (BLM).

Access road and pipeline right of way included with this application.

McElvain Oil & Gas Properties, Inc. is securing a Designation of Operator from

Burlington Resources for the drilling of this well.

IN ABOVE SPACE DESCRIBE PROPOSED PROGRAM: If proposal is to deepen, give data on present productive zone and proposed new productive zone. If proposal is to drill or deepen directionally, give pertinent data on subsurface locations and measured and true vertical depths. Give blowout preventer program, if any.

24.

SIGNED

E. Fielder

TITLE

Agent

DATE

06/04/98

(This space for Federal or State office use)

PERMIT NO.

APPROVAL DATE

JUL 06 1998

Application approval does not warrant or certify that the applicant holds legal or equitable title to those rights in the subject lease which would entitle the applicant to conduct operations thereon.

CONDITIONS OF APPROVAL, IF ANY:

APPROVED BY

M. [Signature]

TITLE

Pet. Eng.

DATE

7-6-98

*See Instructions On Reverse Side

District I
PO Box 1980, Hobbs, NM 88241-1980

State of New Mexico
Energy, Minerals & Natural Resources Department

Form C-102
Revised February 21, 1994

District II
PO Drawer 00, Artesia, NM 88211-0719

OIL CONSERVATION DIVISION
PO Box 2088
Santa Fe, NM 87504-2088

Submit to Appropriate District Office
State Lease - 4 Copies
Fee Lease - 3 Copies

District III
1000 Rio Brazos Rd., Aztec, NM 87410

District IV
PO Box 2088, Santa Fe, NM 87504-2088

☐ AMENDED REPORT

WELL LOCATION AND ACREAGE DEDICATION PLAT

*API Number 30-045-29641		*Pool Code 72319	*Pool Name Blanco Mesa Verde
*Property Code 20969	*Property Name BROWN FEDERAL		*Well Number 1R
*OGRID No. 22044	*Operator Name McELVAIN OIL & GAS PROPERTIES		*Elevation 6768'

¹⁰ Surface Location

UL or lot no.	Section	Township	Range	Lot Idn	Feet from the	North/South line	Feet from the	East/West line	County
N	9	32N	10W		790	SOUTH	1550	WEST	SAN JUAN

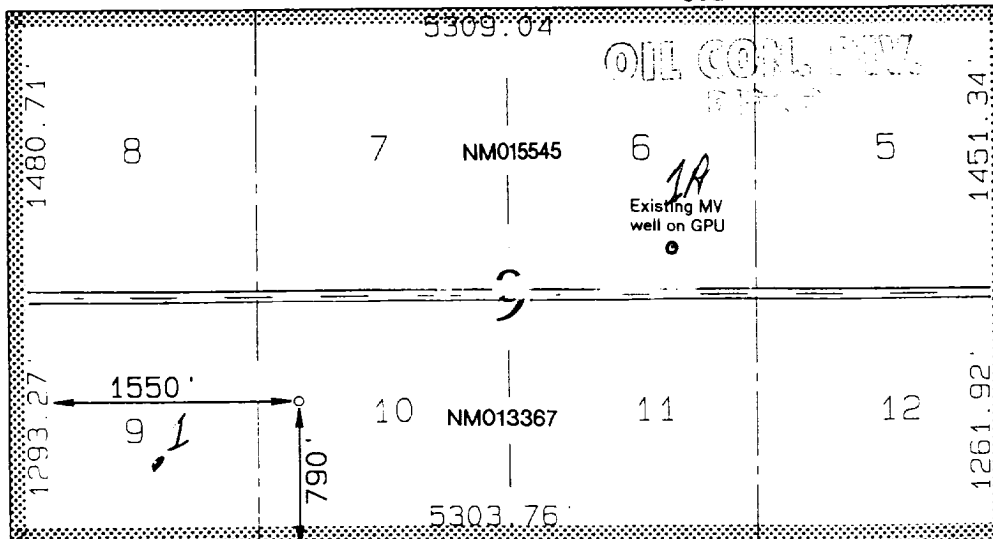
¹¹ Bottom Hole Location If Different From Surface

UL or lot no.	Section	Township	Range	Lot Idn	Feet from the	North/South line	Feet from the	East/West line	County

¹² Dedicated Acres 334.06	¹³ Joint or Infill	¹⁴ Consolidation Code	¹⁵ Order No.
-----------------------------------------	-------------------------------	----------------------------------	-------------------------

NO ALLOWABLE WILL BE ASSIGNED TO THIS COMPLETION UNTIL ALL INTERESTS HAVE BEEN CONSOLIDATED OR A NON-STANDARD UNIT HAS BEEN APPROVED BY THE DIVISION

RECEIVED
JUL 1 5 1998



¹⁷ OPERATOR CERTIFICATION

I hereby certify that the information contained herein is true and complete to the best of my knowledge and belief.

Signature
Bob Fielder
Printed Name
Agent
Title
05/15/98
Date

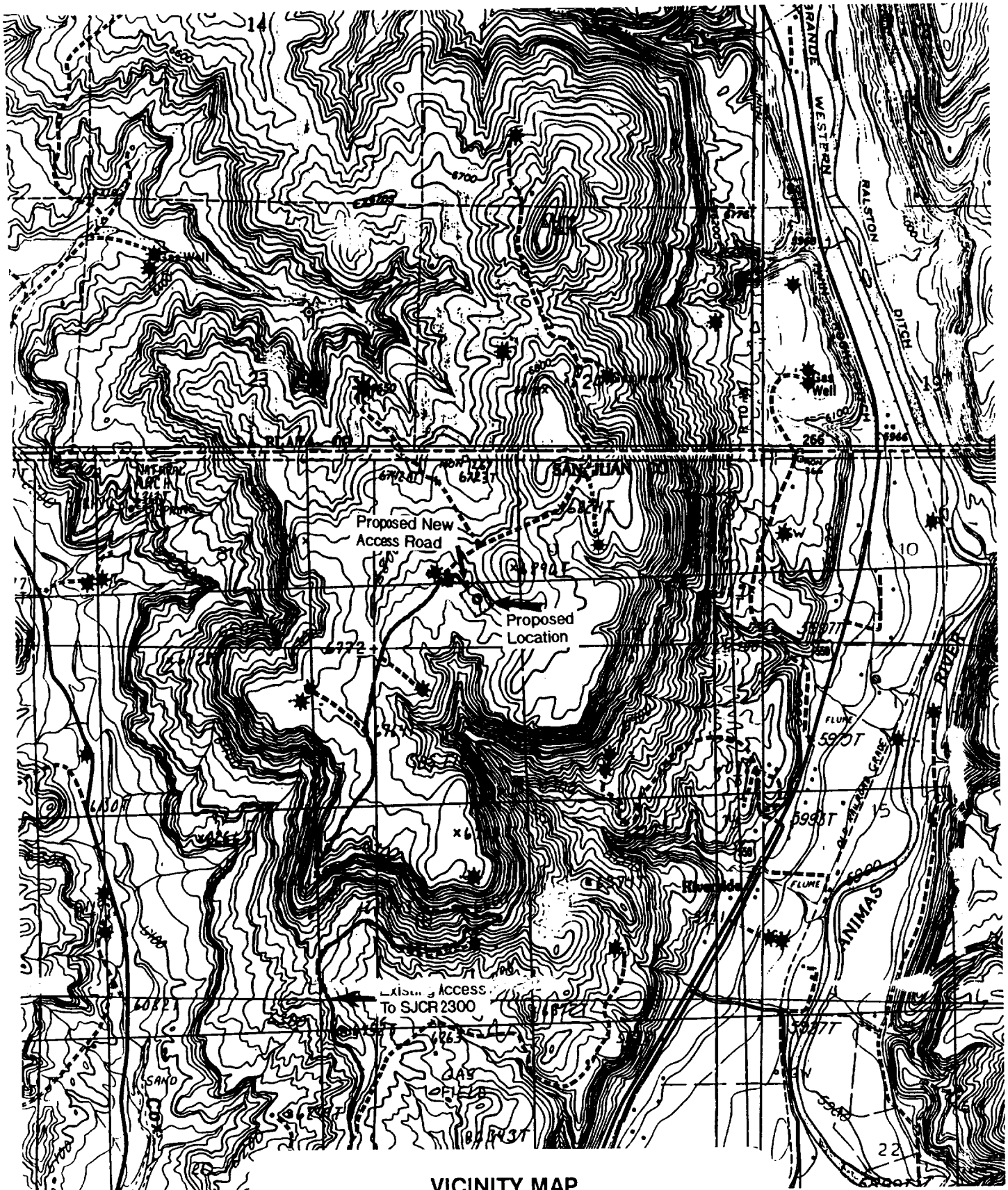
¹⁸ SURVEYOR CERTIFICATION

I hereby certify that the well location shown on this plat was plotted from field notes of actual surveys made by me or under my supervision, and that the same is true and correct to the best of my belief.

MAY 7, 1998
Date of Survey

Signature and Seal of Professional Surveyor

NEALE C. EDWARDS
NEW MEXICO
6857
Certificate No. 6857
Professional Surveyor



VICINITY MAP
McELVAIN OIL & GAS PROPERTIES, INC.
Brown No. 1R
790' FSL & 1550' FWL
Section 9, T32N, R10W, NMPM
San Juan Co., New Mexico