

UNITED STATES
DEPARTMENT OF THE INTERIOR
BUREAU OF LAND MANAGEMENT

APPLICATION FOR PERMIT TO DRILL, DEEPEN, OR PLUG BACK

1a. Type of Work DRILL	5. Lease Number SF-081155
1b. Type of Well GAS	Unit Reporting Number
2. Operator BURLINGTON RESOURCES Oil & Gas Company	Indian, All. or Tribe
3. Address & Phone No. of Operator PO Box 4289, Farmington, NM 87499 (505) 326-9700	Unit Agreement Name Allison Unit
4. Location of Well 1940' FNL, 790' FWL Latitude 36° 58.1, Longitude 107° 30.3	8. Farm or Lease Name Allison Unit
	9. Well Number 23M
10. Field, Pool, Wildcat Blanco MV/Basin Dk	11. Sec., Twn, Rge, Mer. (NMPM) Sec 19, T-32-N, R-6-W
12. County SJ	13. State NM
14. Distance in Miles from Nearest Town 4 miles to Allison	15. Distance from Proposed Location to Nearest Property or Lease Line 790'
16. Acres in Lease	17. Acres Assigned to Well 316.83
18. Distance from Proposed Location to Nearest Well, Drig, Compl, or Applied for on this Lease 50'	19. Proposed Depth 8020'
20. Rotary or Cable Tools Rotary	21. Elevations (DF, FT, GR, Etc.) 644E' GR
22. Approx. Date Work will Start	23. Proposed Casing and Cementing Program See Operations Plan attached
24. Authorized by: <i>[Signature]</i> Regulatory/Compliance Administrator	DRILLING OPERATIONS AUTHORIZED ARE SUBJECT TO COMPLIANCE WITH ATTACHED "GENERAL REQUIREMENTS"

PERMIT NO. _____

APPROVAL DATE **SEP 09 1998**

APPROVED BY **/s/ Duane W. Spencer**

TITLE _____

DATE **SEP 10 1998**

Archaeological Report to be submitted

Threatened and Endangered Species Report to be submitted

NOTE: This format is issued in lieu of U.S. BLM Form 3160-3

Title 18 U.S.C. Section 1001, makes it a crime for any person knowingly and willfully to make to any department or agency of the United States any false, fictitious or fraudulent statements or presentations as to any matter within its jurisdiction.

NSL-4087Q

NMOCO

District II
PO Drawer DD, Artesia, NM 88211-0719

District III
1000 Rio Brazos Rd., Aztec, NM 87410

OIL CONSERVATION DIVISION

PO Box 2088

Santa Fe, NM 87504-2088

Submit to Appropriate District Office
State Lease - 4 Copies
Fee Lease - 3 Copies

District IV
PO Box 2088, Santa Fe, NM 87504-2088

05 JUN 14 11:09:35 ☐ AMENDED REPORT

C/O [redacted] ON NM

WELL LOCATION AND ACREAGE DEDICATION PLAT

*API Number 30-045-29668		*Pool Code 72319/71599	*Pool Name Blanco Mesaverde/Basin Dakota
*Property Code 6784	*Property Name ALLISON UNIT		*Well Number 23M
*GRID No. 14538	*Operator Name BURLINGTON RESOURCES OIL & GAS COMPANY		*Elevation 6448'

¹⁰ Surface Location

UL or lot no.	Section	Township	Range	Lot 10n	Feet from the	North/South line	Feet from the	East/West line	County
E	19	32N	6W		1940	NORTH	790	WEST	SAN JUAN

¹¹ Bottom Hole Location If Different From Surface

UL or lot no.	Section	Township	Range	Lot ID#	Feet from the	North/South line	Feet from the	East/West line	County
¹² Dedicated Acres MV-W/316.83 DK-W/316.83		¹³ Joint or Infill	¹⁴ Consolidation Code		¹⁵ Order No.				

NO ALLOWABLE WILL BE ASSIGNED TO THIS COMPLETION UNTIL ALL INTERESTS HAVE BEEN CONSOLIDATED
OR A NON-STANDARD UNIT HAS BEEN APPROVED BY THE DIVISION

16

1312.08'

1325.28'

2650.56'

FEE

1

1940'

2654.52'

790'

2

19

RECEIVED

SEP 14 1998

OIL CON. DIV.

DIST. 3

USA SF-081155

3

2661.78'

4

FEE

1275.12'

1314.06'

2657.82'

2772.66'

2659.14'

17 OPERATOR CERTIFICATION

I hereby certify that the information contained herein is true and complete to the best of my knowledge and belief

Peggy Bradfield

Signature

Peggy Bradfield

Printed Name

Regulatory Administrator

Title

5-30-98

Date

18 SURVEYOR CERTIFICATION

I hereby certify that the well location shown on this plat was plotted from field notes of actual surveys made by me or under my supervision, and that the same is true and correct to the best of my belief.

APRIL 20, 1998

Date of Survey

Signature and Seal of Professional Surveyor

NEALE C. EDWARDS

NEW MEXICO

6857

REGISTERED PROFESSIONAL SURVEYOR

5820

Certificate Number

OPERATIONS PLAN

Well Name: Allison Unit #23M
Location: 1940' FNL, 790' FWL Sec 19, T-32-N, R-6-W
San Juan County, NM
Latitude 36° 58.1, Longitude 107° 30.3
Formation: Blanco Mesa Verde/Basin Dakota
Elevation: 6448' GL

<u>Formation Tops:</u>	<u>Top</u>	<u>Bottom</u>	<u>Contents</u>
Surface	San Jose	2260'	
Ojo Alamo	2260'	2370'	aquifer
Kirtland	2370'	2771'	
Fruitland	2771'	3120'	gas
Pictured Cliffs	3120'	3420'	gas
Lewis	3420'	4185'	gas
Intermediate TD	3520'		
Huerfano Bentonite	4185'	4588'	gas
Chacra	4588'	5360'	
Massive Cliff House	5360'	5430'	gas
Menefee	5430'	5640'	gas
Massive Point Lookout	5640'	6100'	gas
Mancos Shale	6100'	6970'	
Gallup	6970'	7730'	gas
Greenhorn	7730'	7785'	gas
Dakota	7785'		gas
TD (4 1/2" liner)	8020'		

Logging Program:

Cased hole - CBL - TD to 200' above TOC, GR/CNL across MV/Dk

Mud Program:

<u>Interval</u>	<u>Type</u>	<u>Weight</u>	<u>Vis.</u>	<u>Fluid Loss</u>
0- 200'	Spud	8.4-9.0	40-50	no control
200-3520'	LSND	8.4-9.0	30-60	no control
3520-8020'	Gas	n/a	n/a	n/a

Pit levels will be visually monitored to detect gain or loss of fluid control.

Casing Program (as listed, the equivalent, or better):

<u>Hole Size</u>	<u>Depth Interval</u>	<u>Csq. Size</u>	<u>Wt.</u>	<u>Grade</u>
12 1/4"	0' - 200'	9 5/8"	32.3#	WC-50
8 3/4"	0' - 3520'	7"	20.0#	J-55
6 1/4"	3420' - 8020'	4 1/2"	10.5#	J-55

Tubing Program:

0' - 8020' 2 3/8" 4.70# EUE

BOP Specifications, Wellhead and Tests:

Surface to Intermediate TD -

11" 2000 psi minimum double gate BOP stack (Reference Figure #1).
After nipple-up prior to drilling out surface casing, rams and casing will be tested to 600 psi for 30 minutes.

Intermediate TD to Total Depth -

11" 2000 psi minimum double gate BOP stack (Reference Figure #1).
After nipple-up prior to drilling out intermediate casing, rams and casing will be tested to 1500 psi for 30 minutes.

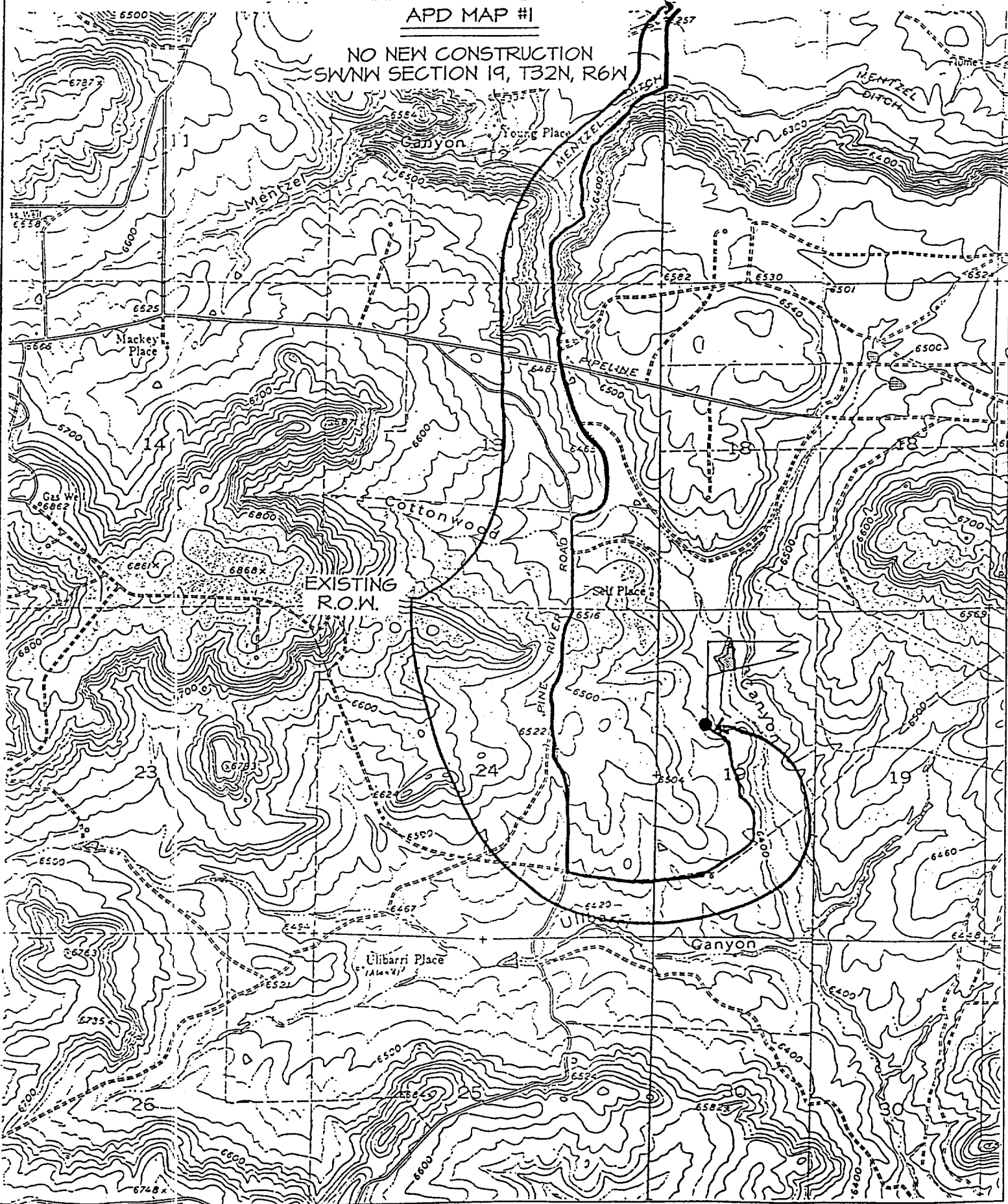
BURLINGTON RESOURCES OIL & GAS COMPANY ALLISON UNIT #23M

1940' FNL & 790' FWL, SECTION 19, T32N, R6W, N.M.P.M.

SAN JUAN COUNTY, NEW MEXICO

APD MAP #1

NO NEW CONSTRUCTION
SWNW SECTION 19, T32N, R6W





NEW MEXICO ENERGY, MINERALS
& NATURAL RESOURCES DEPARTMENT

OIL CONSERVATION DIVISION
2040 South Pacheco Street
Santa Fe, New Mexico 87505
(505) 827-7131

July 8, 1998

Burlington Resources Oil & Gas Company
P. O. Box 4289
Farmington, New Mexico 87499-4289
Attention: Peggy Bradfield

RECEIVED
JUL 15 1998

23 M

OIL CON. DIV. Administrative Order NSL-4087
DIST. 3

Dear Ms Bradfield:

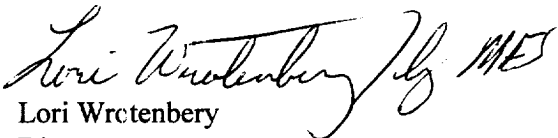
Reference is made to your application submitted to the New Mexico Oil Conservation Division ("Division") on July 1, 1998 for an exception to the well location requirements provided within the "Special Rules and Regulations for the Blanco-Mesaverde Pool/Special Rules and Regulations for the Basin-Dakota Pool," as promulgated by Division Order No. R-10987, for Burlington Resources Oil & Gas Company's ("Burlington") proposed Allison Unit Well No. 23-M to be drilled at an unorthodox infill gas well location in both the Blanco-Mesaverde and Basin-Dakota Pools 1940 feet from the North line and 790 feet from the West line (Lot 2/Unit E) of Section 19, Township 32 North, Range 6 West, NMPM, San Juan County, New Mexico.

Gas production attributed to the well from both pools is to be included in the existing standard 316.83-acre stand-up gas spacing and proration unit comprising Lots 1 through 4 and the E/2 W/2 (W/2 equivalent) of Section 19, which is currently dedicated to Burlington's Allison Unit Well No. 23-X (API No. 30-045-13189), located at a standard gas well location for both the Blanco-Mesaverde and Basin-Dakota Pools 990 feet from the South line and 965 feet from the West line (Lot 4/Unit M) of Section 19.

The application has been duly filed under the provisions of Division Rules 104.F and 605.B of the General Rules and Regulations of the New Mexico Oil Conservation Division ("Division").

By the authority granted me under the provisions of Division Rule 104.F(2), the above-described unorthodox Basin-Dakota/Blanco-Mesaverde infill gas well location for the Allison Unit Well No. 23-M is hereby approved. Both of the aforementioned Allison Unit Well Nos. 23-X and 23-M and both spacing units will be subject to all existing rules, regulations, policies, and procedures applicable to prorated gas pools in Northwest, New Mexico.

Sincerely,


Lori Wretenberg
Director

LW/MES/kv

cc: New Mexico Oil Conservation Division - Aztec /
U. S. Bureau of Land Management - Farmington

BURLINGTON RESOURCES

SAN JUAN DIVISION

Sent Federal Express

Ms. Lori Wrotenbery, Director
New Mexico Oil Conservation Division
2040 South Pacheco
Santa Fe, New Mexico 87505

Re: Allison Unit #23M
1940'FNL, 790'FWL Section 19, T-32-N, R-6-W, San Juan County, NM
30-045-not assigned

Dear Ms. Wrotenbery:

Burlington Resources is applying for administrative approval of an unorthodox gas well location for the Blanco Mesa Verde and Basin Dakota pools. This application for the referenced location is for topographic and archaeological reasons, the presence of pipelines, and especially at the request of the landowner.

Production from both the Blanco Mesa Verde pool and Basin Dakota pool is to be included in a 316.83 acre gas spacing and proration unit comprising of the west half (W/2) of Section 19 which is currently dedicated to the Allison Unit #23X (30-045-13189) located at 990'FSL, 965'FWL of Section 19.

The following attachments are for your review:

1. Application for Permit to Drill.
2. Completed C-102 at referenced location.
3. Offset operators/owners plat – Burlington is the offset operator.
4. 7.5 minute topographic map, and enlargement of the map to define topographic features.

We appreciate your earliest consideration of this application.

Sincerely,



Peggy Bradfield
Regulatory/Compliance Administrator

xc: NMOCD - Aztec District Office
Bureau of Land Management - Farmington District Office

UNITED STATES
DEPARTMENT OF THE INTERIOR
BUREAU OF LAND MANAGEMENT

APPLICATION FOR PERMIT TO DRILL, DEEPEN, OR PLUG BACK

1a. Type of Work DRILL	5. Lease Number SF-081155 Unit Reporting Number
1b. Type of Well GAS	6. If Indian, All. or Tribe
2. Operator BURLINGTON RESOURCES Oil & Gas Company	7. Unit Agreement Name Allison Unit
3. Address & Phone No. of Operator PO Box 4289, Farmington, NM 87499 (505) 326-9700	8. Farm or Lease Name Allison Unit 9. Well Number 23M
4. Location of Well 1940' FNL, 790' FWL Latitude 36° 58.1, Longitude 107° 30.3	10. Field, Pool, Wildcat Blanco MV/Basin Dk 11. Sec., Twn, Rge, Mer. (NMPM) Sec 19, T-32-N, R-6-W API # 30-045-
14. Distance in Miles from Nearest Town 4 miles to Allison	12. County SJ 13. State NM
15. Distance from Proposed Location to Nearest Property or Lease Line 790'	
16. Acres in Lease	17. Acres Assigned to Well 316.83
18. Distance from Proposed Location to Nearest Well, Drig, Compl, or Applied for on this Lease 50'	
19. Proposed Depth 8020'	20. Rotary or Cable Tools Rotary
21. Elevations (DF, FT, GR, Etc.) 6443' GR	22. Approx. Date Work will Start
23. Proposed Casing and Cementing Program See Operations Plan attached	
24. Authorized by: <u>[Signature]</u> Regulatory/Compliance Administrator	<u>5-30-98</u> Date

PERMIT NO. _____ APPROVAL DATE _____
APPROVED BY _____ TITLE _____ DATE _____

Archaeological Report to be submitted

Threatened and Endangered Species Report to be submitted

NOTE: This format is issued in lieu of U.S. BLM Form 3160-3

Title 18 U.S.C. Section 1001, makes it a crime for any person knowingly and willfully to make to any department or agency of the United States any false, fictitious or fraudulent statements or presentations as to any matter within its jurisdiction.

District I
PO Box 1980, Hobbs, NM 88241-1980

District II
PO Drawer DD, Artesia, NM 88211-0719

District III
1000 Rio Brazos Rd., Aztec, NM 87410

District IV
PO Box 2088, Santa Fe, NM 87504-2088

State of New Mexico
Energy, Minerals & Natural Resources Department

OIL CONSERVATION DIVISION
PO Box 2088
Santa Fe, NM 87504-2088

Form C-102
Revised February 21, 1994
Instructions on back
Submit to Appropriate District Office
State Lease - 4 Copies
Fee Lease - 3 Copies

☐ AMENDED REPORT

WELL LOCATION AND ACREAGE DEDICATION PLAT

*API Number 30-045-		*Pool Code 72319/71599	*Pool Name Blanco Mesaverde/Basin Dakota
*Property Code 6784	*Property Name ALLISON UNIT		*Well Number 23M
*OGRID No. 14538	*Operator Name BURLINGTON RESOURCES OIL & GAS COMPANY		*Elevation 6448'

10 Surface Location

UL or lot no.	Section	Township	Range	Lot Idn	Feet from the	North/South line	Feet from the	East/West line	County
E	19	32N	6W		1940	NORTH	790	WEST	SAN JUAN

11 Bottom Hole Location If Different From Surface

UL or lot no.	Section	Township	Range	Lot Idn	Feet from the	North/South line	Feet from the	East/West line	County
12 Dedicated Acres MV-W/316.83 DK-W/316.83		13 Joint or Infill		14 Consolidation Code		15 Order No.			

NO ALLOWABLE WILL BE ASSIGNED TO THIS COMPLETION UNTIL ALL INTERESTS HAVE BEEN CONSOLIDATED
OR A NON-STANDARD UNIT HAS BEEN APPROVED BY THE DIVISION

1312.08'		1325.28'		2650.56'		17 OPERATOR CERTIFICATION I hereby certify that the information contained herein is true and complete to the best of my knowledge and belief Signature <u>Peggy Bradfield</u> Printed Name <u>Peggy Bradfield</u> Regulatory Administrator Title Date <u>5-30-98</u>	
FEE 1 1940' 2654.52'		FEE		Reissued to show revised location		2772.66'	
790'		19		RECEIVED JUL 1 1998 OIL CON. DIV. DIST. 3		2659.14'	
2661.78'		USA SF-081155 3				18 SURVEYOR CERTIFICATION I hereby certify that the well location shown on this plat was plotted from field notes of actual surveys made by me or under my supervision, and that the same is true and correct to the best of my belief. APRIL 20, 1998 Date of Survey Signature and Seal of Professional Surveyor NEALE C. EDWARDS NEW MEXICO 6857 Certificate Number	
1275.12'		FEE 4 1314.06'		2657.82'			

OPERATIONS PLAN

Well Name: Allison Unit #23M
Location: 1940' FNL, 790' FWL Sec 19, T-32-N, R-6-W
San Juan County, NM
Latitude 36° 58.1, Longitude 107° 30.3
Formation: Blanco Mesa Verde/Basin Dakota
Elevation: 6448' GL

<u>Formation Tops:</u>	<u>Top</u>	<u>Bottom</u>	<u>Contents</u>
Surface	San Jose	2260'	
Ojo Alamo	2260'	2370'	aquifer
Kirtland	2370'	2771'	
Fruitland	2771'	3120'	gas
Pictured Cliffs	3120'	3420'	gas
Lewis	3420'	4185'	gas
Intermediate TD	3520'		
Huerfanito Bentonite	4185'	4588'	gas
Chacra	4588'	5360'	
Massive Cliff House	5360'	5430'	gas
Mesafee	5430'	5640'	gas
Massive Point Lookout	5640'	6100'	gas
Mancos Shale	6100'	6970'	
Gallup	6970'	7730'	gas
Greenhorn	7730'	7785'	gas
Dakota	7785'		gas
TD (4 1/2" liner)	8020'		

Logging Program:

Cased hole - CBL - TD to 200' above TOC, GR/CNL across MV/Dk

Mud Program:

<u>Interval</u>	<u>Type</u>	<u>Weight</u>	<u>Vis.</u>	<u>Fluid Loss</u>
0- 200'	Spud	8.4-9.0	40-50	no control
200-3520'	LSND	8.4-9.0	30-60	no control
3520-8020'	Gas	n/a	n/a	n/a

Pit levels will be visually monitored to detect gain or loss of fluid control.

Casing Program (as listed, the equivalent, or better):

<u>Hole Size</u>	<u>Depth Interval</u>	<u>Csq. Size</u>	<u>Wt.</u>	<u>Grade</u>
12 1/4"	0' - 200'	9 5/8"	32.3#	WC-50
8 3/4"	0' - 3520'	7"	20.0#	J-55
6 1/4"	3420' - 8020'	4 1/2"	10.5#	J-55

Tubing Program:

0' - 8020' 2 3/8" 4.70# EUE

BOP Specifications, Wellhead and Tests:

Surface to Intermediate TD -

11" 2000 psi minimum double gate BOP stack (Reference Figure #1).
After nipple-up prior to drilling out surface casing, rams and casing will be tested to 600 psi for 30 minutes.

Intermediate TD to Total Depth -

11" 2000 psi minimum double gate BOP stack (Reference Figure #1).
After nipple-up prior to drilling out intermediate casing, rams and casing will be tested to 1500 psi for 30 minutes.

Surface to Total Depth -

2" nominal, 2000 psi minimum choke manifold (Reference Figure #3).

Completion Operations -

7 1/16" 2000 psi double gate BOP stack (Reference Figure #2). After nipple-up prior to completion, pipe rams, casing and liner top will be tested to 2000 psi for 15 minutes.

Wellhead -

9 5/8" x 7" x 2 3/8" x 3000 psi tree assembly.

General -

- Pipe rams will be actuated once each day and blind rams will be actuated once each trip to test proper functioning.
- An upper kelly cock valve with handle available and drill string valves to fit each drill string will be available on the rig floors at all times.
- BOP pit level drill will be conducted weekly for each drilling crew.
- All BOP tests and drills will be recorded in daily drilling reports.
- Blind and pipe rams will be equipped with extension hand wheels.

Cementing:

9 5/8" surface casing - cement with 163 sx Class "B" cement with 1/4# flocele/sx and 2% calcium chloride (188 cu.ft. of slurry, 200% excess to circulate to surface). WOC 8 hrs. Test casing to 600 psi for 30 minutes.

Saw tooth guide shoe on bottom. Bowspring centralizers will be run in accordance with Onshore Order #2.

7" intermediate casing -

Lead w/283 sx Class "B" w/3% metasilicate, 10# gilsonite/sx and 1/2# flocele/sx. Tail w/90 sx 50/50 Class "B" Poz w/2% calcium chloride, 2% gel, 1/2# flocele/sx, 10# gilsonite/sx (925 cu.ft. of slurry, 75% excess to circulate to surface.) WOC minimum of 8 hours before drilling out intermediate casing. If cement does not circulate to surface, a CBL will be run during completion operations to determine TOC. Test casing to 1500 psi for 30 minutes.

Cement nose guide shoe on bottom with float collar spaced on top of shoe joint. Bowspring centralizers spaced every other joint off bottom, to the base of the Ojo Alamo at 2370'. Two turbolating centralizers at the base of the Ojo Alamo at 2370'. Bowspring centralizers spaced every fourth joint from the base of the Ojo Alamo to the base of the surface casing.

4 1/2" Production Liner -

Cement to cover minimum of 100' of 4 1/2" x 7" overlap. Cement with 497 sx 50/50 Class "B" Poz with 2% gel, 1/4# flocele/sx, 5# gilsonite/sx, and 0.4% fluid loss additive (661 cu.ft., 40% excess to cement 4 1/2" x 7" overlap). WOC a minimum of 18 hrs prior to completing.

Cement float shoe on bottom with float collar spaced on top of shoe joint.

Note: To facilitate higher hydraulic stimulation completion work, no liner hanger will be used. Instead, a long string of 4 1/2" casing will be run and cemented with a minimum of 100' of cement overlap between the 4 1/2" x 7" casing strings. After completion of the well, a 4 1/2" CIBP will be set above the last fracturing job to cut and pull the 4 1/2" casing above the 7" casing shoe. The 4 1/2" bridge plug will then be milled and tubing will be run for completion.

Special Drilling Operations (Gas/Mist Drilling):

The following equipment will be operational while gas/mist drilling:

- An anchored blooie line will be utilized to discharge all cuttings and circulating medium to the blow pit a minimum of 100' from the wellhead.
- The blooie line will be equipped with an automatic igniter or pilot light.
- Compressors will be located a minimum of 100' from the wellhead in the opposite direction from the blooie line.
- Engines will have spark arresters or water cooled exhaust.
- Deduster equipment will be utilized.
- The rotating head will be properly lubricated and maintained.
- A float valve will be utilized above the bit.
- Mud circulating equipment, water, and mud materials will be sufficient to maintain control of the well.

Additional Information:

- The Dakota and Mesa Verde formations will be completed and commingled.
- No abnormal temperatures or hazards are anticipated.
- Anticipated pore pressures are as follows:

Fruitland Coal	300 psi
Pictured Cliffs	500 psi
Mesa Verde	700 psi
Dakota	2500 psi
- Sufficient LCM will be added to the mud system to maintain well control, if lost circulation is encountered.
- The west half is dedicated to the Dakota and the Mesa Verde in this well.
- This gas is dedicated.


Drilling Engineer

5/5/98
Date

BURLINGTON RESOURCES

Allison Unit #23M Multi-Point Surface Use Plan

1. Existing Roads - Refer to Map No. 1. Existing roads used to access the proposed location will be properly maintained for the duration of the project. Bureau of Land Management right-of-way has been applied for as shown on Map No. 1.
2. Planned Access Road - Refer to Map No. 1. None required.
3. Location of Existing Wells - Refer to Map No. 1A.
4. Location of Existing and/or Proposed Facilities if Well is Productive -
 - a. On the Well Pad - Refer to Plat No. 1, anticipated production facilities plat.
 - b. Off the Well Pad - Anticipated pipeline facilities as shown on the attached plat from Williams Field Service.
5. Location and Type of Water Supply - Water will be hauled by truck for the proposed project and will be obtained from Middle Mesa located SW Section 5, T-30-N, R-7-W, New Mexico
6. Source of Construction Materials - If construction materials are required for the proposed project, such materials will be obtained from a commercial quarry.
7. Methods of Handling Waste Materials - All garbage and trash materials will be removed from the site for proper disposal. A portable toilet will be provided for human waste and serviced in a proper manner. If liquids are left in the reserve pit after completion of the project, the pit will be fenced until the liquids have had adequate time to dry. The location clean-up will not take place until such time as the reserve pit can be properly covered over to prevent run-off from carrying waste materials into the watershed. Reserve pits will be lined as needed with either 12 mil bio-degradable plastic liner or a bentonite liner. All earthen pits will be so constructed as to prevent leakage from occurring; no earthen pit will be located on natural drainage. Generation of hazardous waste is not anticipated. Federal regulations will be adhered to regarding handling and disposal of such waste if so generated.
8. Ancillary Facilities - None anticipated.
9. Wellsite Layout - Refer to the location diagram and to the wellsite cut and fill diagram (Figure No. 4). The blow pit will be constructed with a 2'/160' grade to allow positive drainage to the reserve pit and prevent standing liquids in the blow pit.

10. Plans for Restoration of the Surface - After completion of the proposed project, the location will be cleaned and leveled. The location will be left in such a condition that will enable reseeding operations to be carried out. Seed mixture as designated by the responsible government agency will be used. The reseeding operations will be performed during the time period set forth by the responsible government agency. The permanent location facilities will be painted as designated by the responsible government agency.
11. Surface Ownership - LeRoy Self
12. Other Information - Environmental stipulations as outlined by the responsible government agency will be adhered to. Refer to the archaeological report for a description of the topography, flora, fauna, soil characteristics, dwellings, historical and cultural sites.
13. Operator's Representative and Certification - Burlington Resources Oil & Gas Company Regional Drilling Manager, Post Office Box 4289, Farmington, NM 87499, telephone (505) 326-9700. I hereby certify that I, or persons under my direct supervision, have inspected the proposed drill site and access route; that I am familiar with the conditions which presently exist; that the statements made in this plan, are to the best of my knowledge, true and correct; and that the work associated with the operations proposed herein will be performed by Burlington Resources Oil and Gas Company and its contractors and subcontractors in conformity with this plan and the terms and conditions under which it is approved.

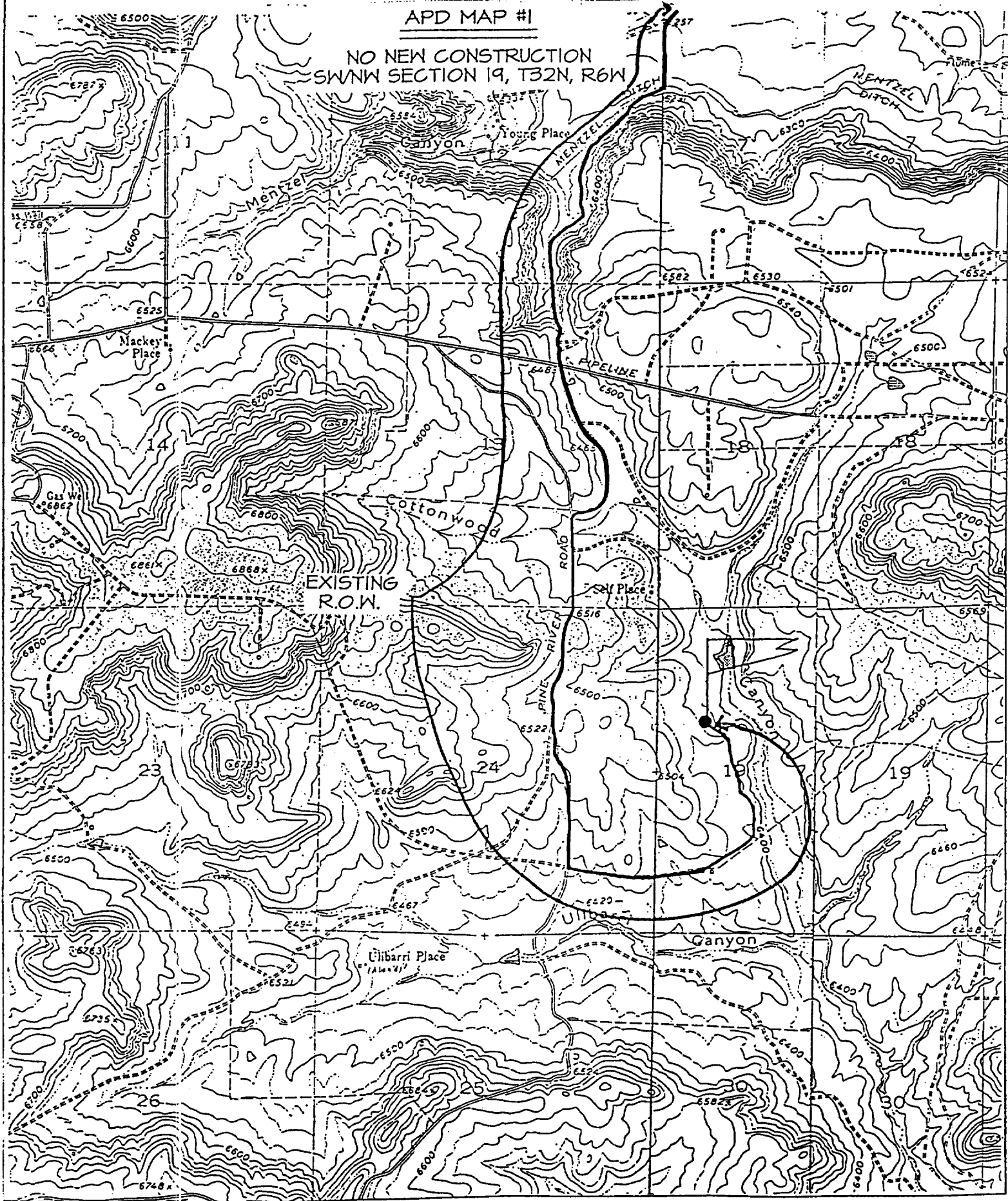

Regulatory/Compliance Administrator 5-30-98
Date

BURLINGTON RESOURCES OIL & GAS COMPANY ALLISON UNIT #23M

1940' FNL & 790' FWL, SECTION 19, T32N, R6W, N.M.P.M.
SAN JUAN COUNTY, NEW MEXICO

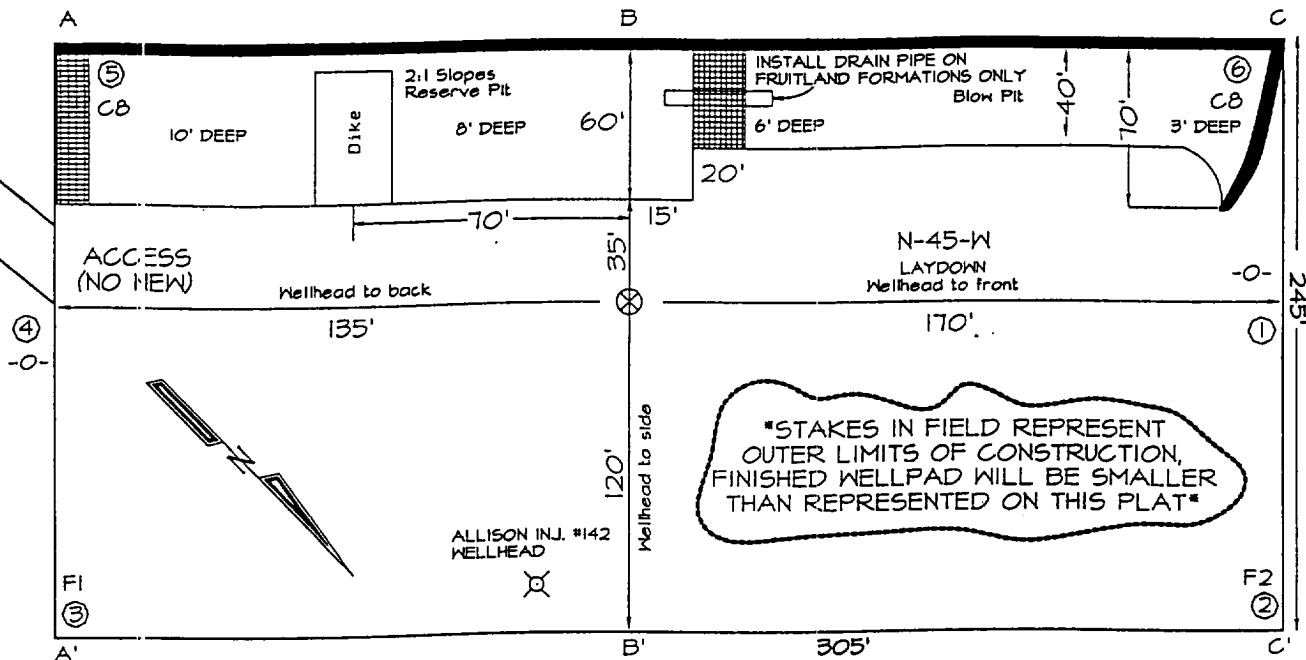
APD MAP #1

NO NEW CONSTRUCTION
SWNW SECTION 19, T32N, R6W



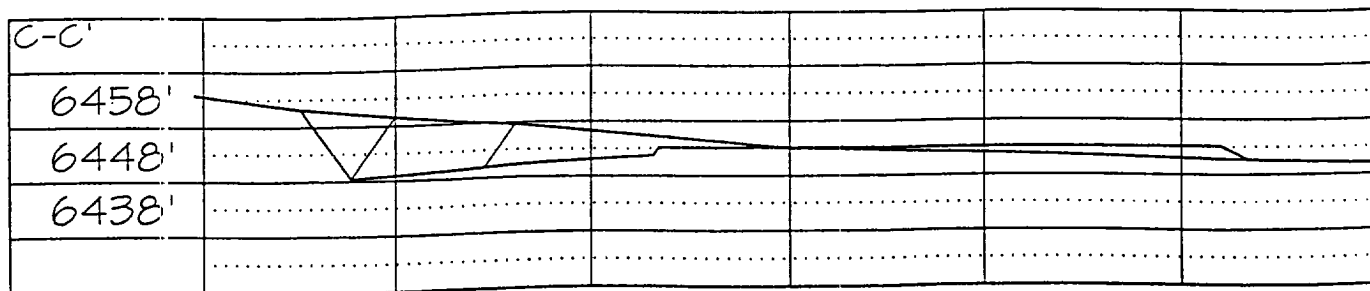
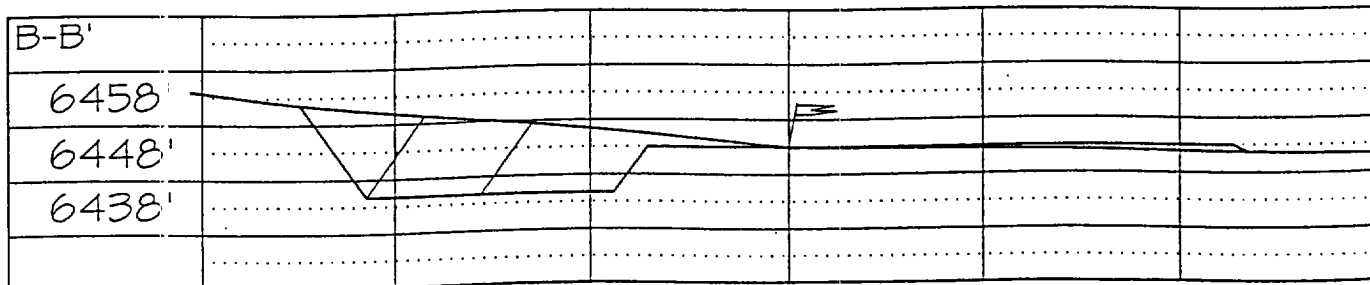
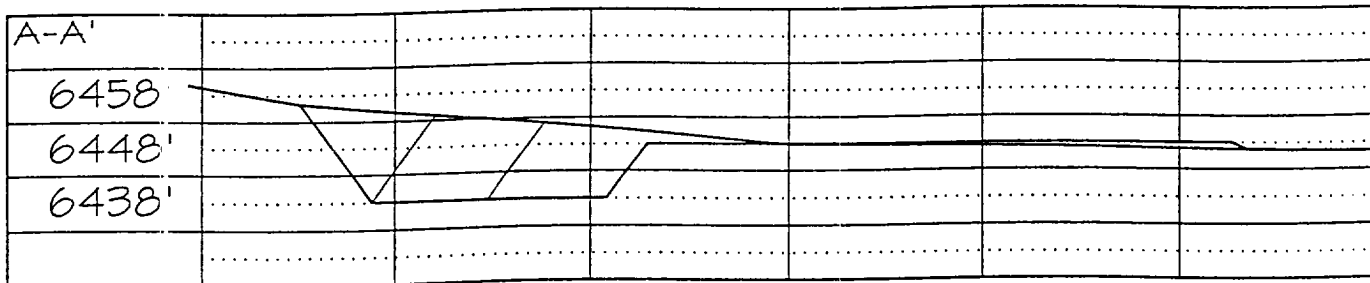
PLAT #1

BURLINGTON RESOURCES OIL & GAS COMPANY
ALLISON UNIT #23M, 1940' FNL & 790' FWL
SECTION 19, T32N, R6W, NMPM, SAN JUAN COUNTY, NEW MEXICO
GROUND ELEVATION: 6448' DATE: APRIL 20, 1998



245' x 305' = 1.71 ACRES

Reserve Pit Dike: to be 8' above Deep side (overflow - 3' wide and 1' above shallow side).
 Blow Pit: overflow pipe halfway between top and bottom and to extend over plastic liner and into blow pit.



Note: Contractor should call One-Call for location of any marked or unmarked buried pipelines or cables on well pad and/or access road at least two (2) working days prior to construction

BURLINGTON RESOURCES OIL AND GAS COMPANY

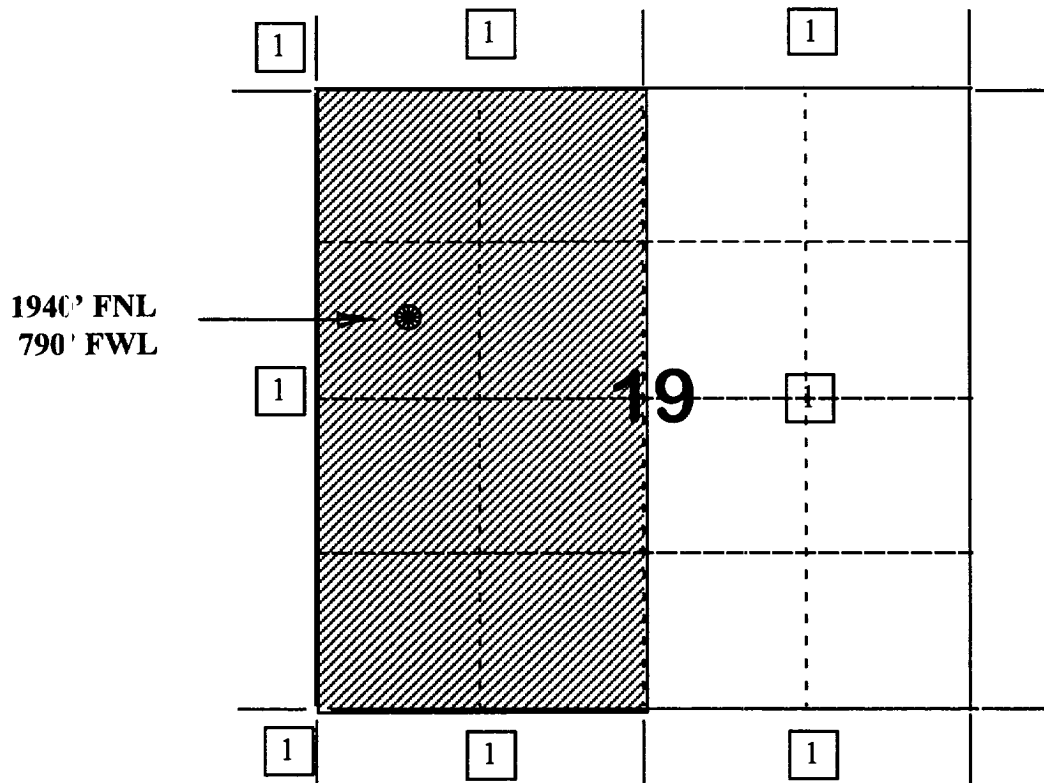
Allison Unit #23M

OFFSET OPERATOR/OWNER PLAT

Nonstandard Location

Mesaverde / Dakota Formations Well

Township 32 North, Range 6 West



1) Burlington Resources

