

UNITED STATES  
DEPARTMENT OF THE INTERIOR  
BUREAU OF LAND MANAGEMENT

APPLICATION FOR PERMIT TO DRILL, DEEPEN, OR PLUG BACK

1a. Type of Work DRILL	5. Lease Number NM-04207-0 SF 08006149
1b. Type of Well GAS	Unit Reporting Number
2. Operator <b>BURLINGTON RESOURCES</b> Oil & Gas Company 14538	7. Unit Agreement Name Allison Unit 6784
3. Address & Phone No. of Operator PO Box 4289, Farmington, NM 87499 (505) 326-9700	8. Farm or Lease Name Allison Unit
	9. Well Number 17M
4. Location of Well 2400' FNL, 810' FWL  Latitude 36° 58.0, Longitude 107° 31.5	10. Field, Pool, Wildcat 72319 Blanco MV/Basin Dk 71599
	11. Sec., Twn, Rge, Mer. (NMPM) E Sec 24, T-32-N, R-7-W API # -30-045- 29689
14. Distance in Miles from Nearest Town 4 miles to Allison	12. County SJ
	13. State NM
15. Distance from Proposed Location to Nearest Property or Lease Line 810'	
16. Acres in Lease	17. Acres Assigned to Well W 320 W 340
18. Distance from Proposed Location to Nearest Well, Drlg, Compl, or Applied for on this Lease 810'	
19. Proposed Depth 8147'	20. Rotary or Cable Tools Rotary
21. Elevations (DF, FT, GR, Etc.) 6550' GR	22. Approx. Date Work will Start
23. Proposed Casing and Cementing Program See Operations Plan attached	DRILLING OPERATIONS AUTHORIZED ARE SUBJECT TO COMPLIANCE WITH ATTACHED "GENERAL REQUIREMENTS"
24. Authorized by: <u>[Signature]</u> Regulatory/Compliance Administrator	Date <u>6-19-98</u>

PERMIT NO. \_\_\_\_\_

APPROVAL DATE SEP 24 1998

APPROVED BY /s/ Duane W. Spencer

TITLE \_\_\_\_\_

DATE SEP 24 1998

Archaeological Report to be submitted

Threatened and Endangered Species Report to be submitted

NOTE: This format is issued in lieu of U.S. BLM Form 3160-3

Title 18 U.S.C. Section 1001, makes it a crime for any person knowingly and willfully to make to any department or agency of the United States any false, fictitious or fraudulent statements or presentations as to any matter within its jurisdiction.

NSL-4129(2)

NMOCGD

District I  
PO Box 1980, Hobbs, NM 88241-1980

District II  
PO Drawer DD, Artesia, NM 88211-0719

District III  
1000 Rio Brazos Rd., Aztec, NM 87410

District IV  
PO Box 2088, Santa Fe, NM 87504-2088

State of New Mexico  
Energy, Minerals & Natural Resources Department

Form C  
Revised February 21, 1988  
Instructions on  
Submit to Appropriate District Office  
State Lease - 4 Cc.  
Fee Lease - 3 Cc.

OIL CONSERVATION DIVISION  
PO Box 2088  
Santa Fe, NM 87504-2088

50 SEP 27 PM 1:30 ☐ AMENDED REPC

WELL LOCATION AND ACREAGE DEDICATION PLAT

*API Number 30-045-29689		*Pool Code 72319/71599	*Pool Name Blanco Mesaverde/Basin Dakota
*Property Code 6784	*Property Name ALLISON UNIT		*Well Number 17M
*GRID No. 14538	*Operator Name BURLINGTON RESOURCES OIL & GAS COMPANY		*Elevation 6550'

10 Surface Location

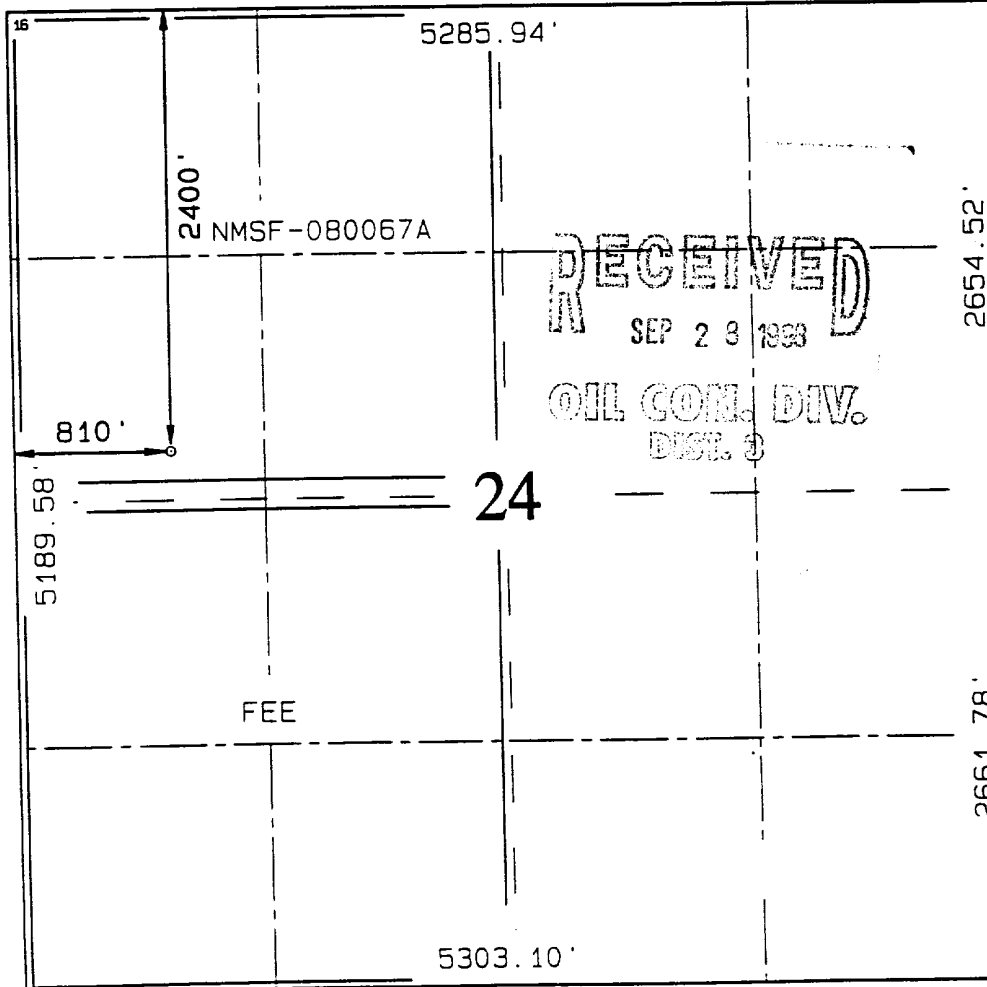
UL or lot no.	Section	Township	Range	Lot Idn	Feet from the	North/South line	Feet from the	East/West line	County
E	24	32N	7W		2400	NORTH	810	WEST	SAN JUAN

11 Bottom Hole Location If Different From Surface

UL or lot no.	Section	Township	Range	Lot Idn	Feet from the	North/South line	Feet from the	East/West line	County

12 Dedicated Acres MV-W/320 DK-W/320	13 Joint or Infill	14 Consolidation Code	15 Order No.
--	--------------------	-----------------------	--------------

NO ALLOWABLE WILL BE ASSIGNED TO THIS COMPLETION UNTIL ALL INTERESTS HAVE BEEN CONSOLIDATED OR A NON-STANDARD UNIT HAS BEEN APPROVED BY THE DIVISION



17 OPERATOR CERTIFICATION  
I hereby certify that the information contained here is true and complete to the best of my knowledge and belief.

*Peggy Bradfield*  
Signature  
Peggy Bradfield  
Printed Name  
Regulatory Administrator  
Title  
6-19-98  
Date

18 SURVEYOR CERTIFICATION  
I hereby certify that the well location shown on this plat was plotted from field notes of actual surveys made or under my supervision, and that the same is true and correct to the best of my belief.

MAY 20, 1998  
Date of Survey  
Signature and Seal of Professional Surveyor  
NEALE EDWARD  
NEW MEXICO  
6857  
Certificate Number

## OPERATIONS PLAN

**Well Name:** Allison Unit #17M  
**Location:** 2400' FNL, 810' FWL Sec 24, T-32-N, R-7-W  
San Juan County, NM  
Latitude 36° 58.0, Longitude 107° 31.5  
**Formation:** Blanco Mesa Verde/Basin Dakota  
**Elevation:** 6550' GL

<u>Formation Tops:</u>	<u>Top</u>	<u>Bottom</u>	<u>Contents</u>
Surface	San Jose	2337'	
Ojo Alamo	2337'	2437'	aquifer
Kirtland	2437'	2922'	
Fruitland	2922'	3327'	gas
Pictured Cliffs	3327'	3537'	gas
Lewis	3537'	4292'	gas
Intermediate TD	3637'		
Huerfanito Bentonite	4292'	4692'	gas
Chacra	4692'	5512'	
Massive Cliff House	5512'	5537'	gas
Menefee	5537'	5752'	gas
Massive Point Lookout	5752'	6197'	gas
Mancos Shale	6197'	7112'	
Gallup	7112'	7842'	gas
Greenhorn	7842'	7897'	gas
Dakota	7897'		gas
TD (4 1/2" liner)	8147'		

### Logging Program:

Cased hole - CBL - TD to 200' above TOC, GR/CNL across MV/Dk

### Mud Program:

<u>Interval</u>	<u>Type</u>	<u>Weight</u>	<u>Vis.</u>	<u>Fluid Loss</u>
0- 200'	Spud	8.4-9.0	40-50	no control
200-3637'	LSND	8.4-9.0	30-60	no control
3637-8147'	<del>Gas</del> Air/Mist	n/a	n/a	n/a

Pit levels will be visually monitored to detect gain or loss of fluid control.

### Casing Program (as listed, the equivalent, or better):

<u>Hole Size</u>	<u>Depth Interval</u>	<u>Csq. Size</u>	<u>Wt.</u>	<u>Grade</u>
12 1/4"	0' - 200'	9 5/8"	32.3#	WC-50
8 3/4"	0' - 3637'	7"	20.0#	J-55
6 1/4"	3537' - 8147'	4 1/2"	10.5#	J-55

### Tubing Program:

0' - 8147'      2 3/8"      4.70# EUE

### BOP Specifications, Wellhead and Tests:

#### Surface to Intermediate TD -

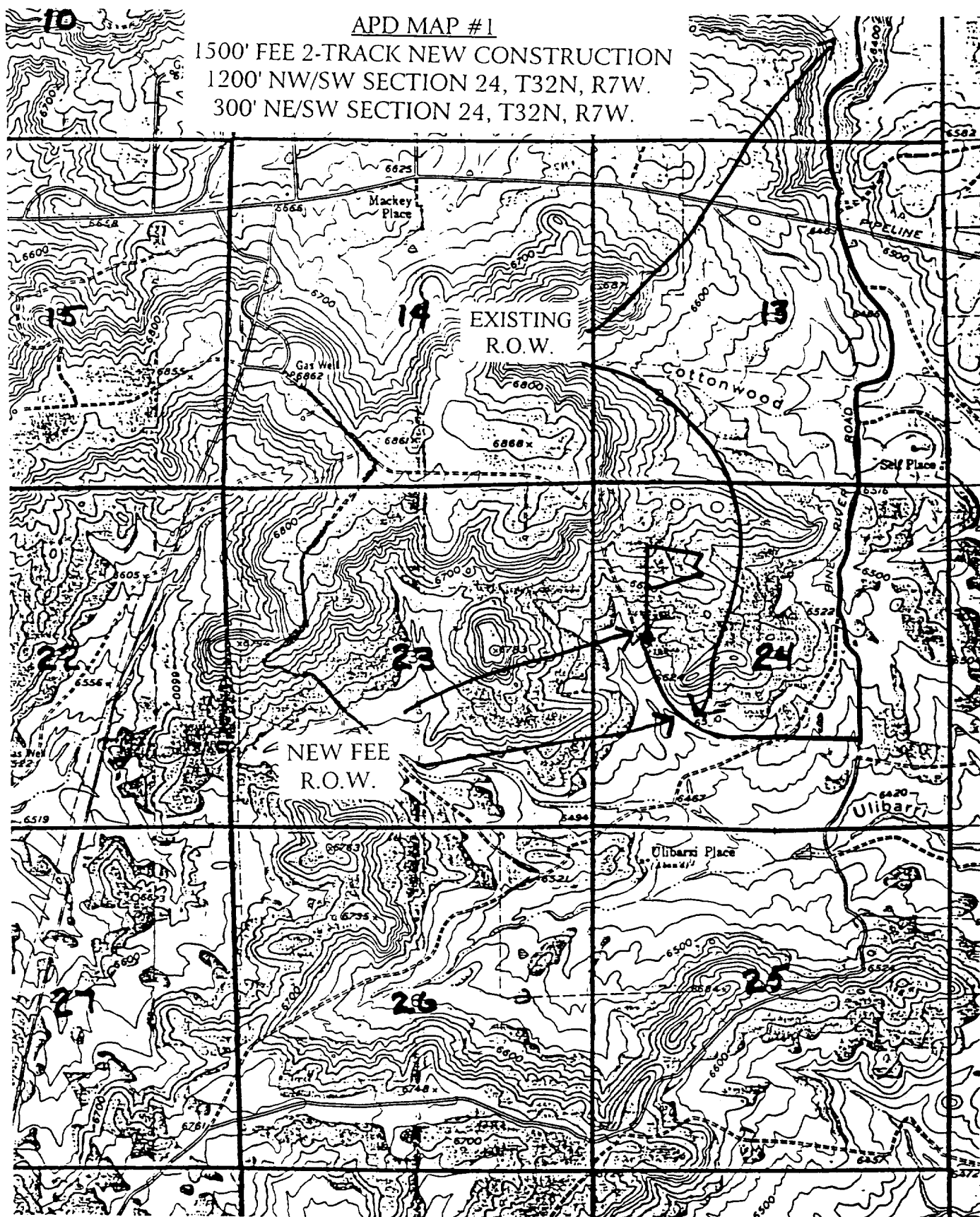
11" 2000 psi minimum double gate BOP stack (Reference Figure #1).  
After nipple-up prior to drilling out surface casing, rams and casing will be tested to 600 psi for 30 minutes.

#### Intermediate TD to Total Depth -

11" 2000 psi minimum double gate BOP stack (Reference Figure #1).  
After nipple-up prior to drilling out intermediate casing, rams and casing will be tested to 1500 psi for 30 minutes.

2400' FNL & 810' FWL, SECTION 24, T32N, R7W, N.M.P.M.  
SAN JUAN COUNTY, NEW MEXICO

1500' FEE 2-TRACK NEW CONSTRUCTION  
1200' NW/SW SECTION 24, T32N, R7W.  
300' NE/SW SECTION 24, T32N, R7W.





NEW MEXICO ENERGY, MINERALS  
& NATURAL RESOURCES DEPARTMENT

OIL CONSERVATION DIVISION  
2040 South Pacheco Street  
Santa Fe, New Mexico 87505  
(505) 827-7131

September 4, 1998

Burlington Resources Oil & Gas Company  
P. O. Box 4289  
Farmington, New Mexico 87499-4289  
Attention: Peggy Bradfield

RECEIVED  
SEP 10 1998  
OIL CON. DIV.  
DIST. 3  
Allison UT. #17M  
E-24-32-7

**Administrative Order NSL-4129**

Dear Ms. Bradfield:

Reference is made to your application dated August 28, 1998 for an exception to the well location requirements provided within the "Special Rules and Regulations for The Blanco-Mesaverde Pool/Special Rules and Regulations for the Basin-Dakota Pool," as promulgated by Division Order No. R-10987, for Burlington Resources Oil & Gas Company's ("Burlington") proposed Allison Unit Well No. 17-M to be drilled at an unorthodox infill gas well location in both the Blanco-Mesaverde and Basin-Dakota Pools 2400 feet from the North line and 810 feet from the West line (Unit E) of Section 24, Township 32 North, Range 7 West, NMPM, San Juan County, New Mexico.

Gas production attributed to the well from both pools is to be included in the existing standard 320-acre stand-up gas spacing and proration unit comprising the W/2 of Section 24, which production is currently dedicated to Burlington's Allison Unit Well No. 17 (API No. 30-045-11294), located at a standard gas well location for both the Blanco-Mesaverde and Basin-Dakota Pools 1650 feet from the South and West lines (Unit K) of Section 24.

The application has been duly filed under the provisions of Rules 104.F and 605.B of the Rules and Regulations of the New Mexico Oil Conservation Division ("Division").

By the authority granted me under the provisions of Division Rule 104.F(2), the above-described unorthodox Basin-Dakota/Blanco-Mesaverde infill gas well location for the Allison Unit Well No. 17-M is hereby approved. Both of the aforementioned Allison Unit Well Nos. 17 and 17-M and both spacing units will be subject to all existing rules, regulations, policies, and procedures applicable to prorated gas pools in Northwest, New Mexico.

Sincerely,

*Lori Wrotenbery / by MES*

Lori Wrotenbery  
Director

LW/MES/kv

cc: New Mexico Oil Conservation Division - Aztec /  
U. S. Bureau of Land Management - Farmington

8/16/98  
ole

# BURLINGTON RESOURCES

SAN JUAN DIVISION

August 28, 1998

Sent Federal Express

Mr. Michael Stogner  
New Mexico Oil Conservation Division  
2040 South Pacheco  
Santa Fe, New Mexico 87505

RECEIVED  
SEP 01 1998  
OIL CON. DIV.  
DIST. 3

Re: Allison Unit #17M  
2400'FNL, 810'FWL, Section 24, T-32-N, R-7-W, San Juan County, New Mexico  
30-045-not assigned

Dear Mr. Stogner:

Burlington Resources is applying for administrative approval of an unorthodox gas well location for both the Mesa Verde pool and Basin Dakota pool.

This application for the referenced location is at the request of the landowner for visual aesthetics (overlooks Navajo Reservoir and Chimney Rock) and to alleviate surface disturbance that can be seen from the landowners home as shown in the extreme northwest quarter of Section 24 on the attached topographic map. This location will utilize the proximity of an existing pipeline right-of-way and road to the Allison Unit #17 (1650'S, 1650'W) and will upgrade 1500' of this pipeline right-of-way for access, thus creating no new surface disturbance. The location will also allow minimum disturbance for tying in the well to the existing pipeline. The geologist has determined that the referenced location is acceptable (see attached geologic maps).

Production from the Blanco Mesa Verde pool and Basin Dakota is to be included in a 320 acre gas spacing and proration unit comprising of the West half (W/2) of Section 24. Production from the Blanco Mesa Verde and the Basin Dakota is dedicated to the Allison Unit #17 (30-045-11294) located at 1650'FSL, 1650'FWL of Section 24.

The following attachments are for your review:

1. Application for Permit to Drill.
2. Completed C-102 at referenced location.
3. Offset operators/owners plat - Burlington is offset operator.
4. 7.5 minute topographic map showing the orthodox windows, the landowner's home and view area, pipeline right-of-way for access; and enlargement of the map to define these features.
5. Aerial map of referenced area.
6. Geologic maps for Dakota and Mesa Verde.

We appreciate your earliest consideration of this application.

Sincerely,



Peggy Bradfield  
Regulatory/Compliance Administrator

xc: NMOCD - Aztec District Office

UNITED STATES  
DEPARTMENT OF THE INTERIOR  
BUREAU OF LAND MANAGEMENT

APPLICATION FOR PERMIT TO DRILL, DEEPEN, OR PLUG BACK

1a. Type of Work DRILL	5. Lease Number NM-04207 Unit Reporting Number
1b. Type of Well GAS	6. If Indian, All. or Tribe
2. Operator <b>BURLINGTON RESOURCES</b> Oil & Gas Company	7. Unit Agreement Name Allison Unit
3. Address & Phone No. of Operator PO Box 4289, Farmington, NM 87499  (505) 326-9700	8. Farm or Lease Name Allison Unit 9. Well Number 17M
4. Location of Well 2400' FNL, 810' FWL  Latitude 36° 58.0, Longitude 107° 31.5	10. Field, Pool, Wildcat Blanco MV/Basin Dk 11. Sec., Twn, Rge, Mer. (NMPM) Sec 24, T-32-N, R-7-W API # -30-045-
14. Distance in Miles from Nearest Town 4 miles to Allison	12. County SJ 13. State NM
15. Distance from Proposed Location to Nearest Property or Lease Line 810'	
16. Acres in Lease	17. Acres Assigned to Well 320
18. Distance from Proposed Location to Nearest Well, Drig, Compl, or Applied for on this Lease 810'	
19. Proposed Depth 8147'	20. Rotary or Cable Tools Rotary
21. Elevations (DF, FT, GR, Etc.) 6550' GR	22. Approx. Date Work will Start
23. Proposed Casing and Cementing Program See Operations Plan attached	
24. Authorized by: <u>[Signature]</u> Regulatory/Compliance Administrator	<u>6-19-98</u> Date

PERMIT NO. \_\_\_\_\_

APPROVAL DATE \_\_\_\_\_

APPROVED BY \_\_\_\_\_

TITLE \_\_\_\_\_

DATE \_\_\_\_\_

Archaeological Report to be submitted

Threatened and Endangered Species Report to be submitted

NOTE: This format is issued in lieu of U.S. BLM Form 3160-3

Title 18 U.S.C. Section 1001, makes it a crime for any person knowingly and willfully to make to any department or agency of the United States any false, fictitious or fraudulent statements or presentations as to any matter within its jurisdiction.

District I  
PO Box 1980, Hobbs, NM 88241-1980

District II  
PO Drawer 88, Artesia, NM 88211-0719

District III  
1000 Rio Brazos Rd., Aztec, NM 87410

District IV  
PO Box 2088, Santa Fe, NM 87504-2088

State of New Mexico  
Energy, Minerals & Natural Resources Department

OIL CONSERVATION DIVISION  
PO Box 2088  
Santa Fe, NM 87504-2088

Revised February  
Instruction:  
Submit to Appropriate District  
State Lease -  
Fee Lease -

☐ AMENDED

### WELL LOCATION AND ACREAGE DEDICATION PLAT

API Number 30-045-		Pool Code 72319/71599	Pool Name Blanco Mesaverde/Basin Dakota
Property Code 6784	Property Name ALLISON UNIT		Well No. 17A
GRID No. 14538	Operator Name BURLINGTON RESOURCES OIL & GAS COMPANY		Elevation 655

#### 10 Surface Location

UL or lot no. E	Section 24	Township 32N	Range 7W	Lot Idn	Feet from the 2400	North/South line NORTH	Feet from the 810	East/West line WEST	SA
--------------------	---------------	-----------------	-------------	---------	-----------------------	---------------------------	----------------------	------------------------	----

#### 11 Bottom Hole Location If Different From Surface

UL or lot no.	Section	Township	Range	Lot Idn	Feet from the	North/South line	Feet from the	East/West line	
---------------	---------	----------	-------	---------	---------------	------------------	---------------	----------------	--

Dedicated Acres MV-W/320 DK-W/320	Joint or Infill	Consolidation Code	Order No.
---	-----------------	--------------------	-----------

NO ALLOWABLE WILL BE ASSIGNED TO THIS COMPLETION UNTIL ALL INTERESTS HAVE BEEN CONSOLIDATED OR A NON-STANDARD UNIT HAS BEEN APPROVED BY THE DIVISION

<div>15</div> <div>5285.94'</div> <div>2400'</div> <div>810'</div> <div>5189.58'</div> <div>2654.52'</div> <div>2661.78'</div> <div>5303.10'</div> <div>24</div> <div>FEE</div> <div>NMSF-080067A</div> <div>RECEIVED</div> <div>SEP 07 1998</div> <div>OIL CON. DIV.</div> <div>DIST. 3</div>		<div>17 OPERATOR CERTIFICATE</div> <div>I hereby certify that the information contained herein is true and complete to the best of my knowledge.</div> <div></div> <div>Signature</div> <div>Peggy Bradfield</div> <div>Printed Name</div> <div>Regulatory Administrator</div> <div>Title</div> <div>6-19-98</div> <div>Date</div> <div>18 SURVEYOR CERTIFICATE</div> <div>I hereby certify that the well location shown was plotted from field notes of actual survey or under my supervision and that the same is correct to the best of my belief.</div> <div>MAY 20, 1998</div> <div>Date of Survey</div> <div>Signature and Seal of Professional Surveyor</div> <div></div> <div>5857</div> <div>Certificate Number</div>
--	--	--



## OPERATIONS PLAN

**Well Name:** Allison Unit #17M  
**Location:** 2400' FWL, 810' FWL Sec 24, T-32-N, R-7-W  
San Juan County, NM  
Latitude 36° 58.0, Longitude 107° 31.5  
**Formation:** Blanco Mesa Verde/Basin Dakota  
**Elevation:** 6550' GL

<u>Formation Tops:</u>	<u>Top</u>	<u>Bottom</u>	<u>Contents</u>
Surface	San Jose	2337'	
Ojo Alamo	2337'	2437'	aquifer
Kirtland	2437'	2922'	
Fruitland	2922'	3327'	gas
Pictured Cliffs	3327'	3537'	gas
Lewis	3537'	4292'	gas
Intermediate TD	3637'		
Huerfanito Bentonite	4292'	4692'	gas
Chacra	4692'	5512'	
Massive Cliff House	5512'	5537'	gas
Menefee	5537'	5752'	gas
Massive Point Lookout	5752'	6197'	gas
Mancos Shale	6197'	7112'	
Gallup	7112'	7842'	gas
Greenhorn	7842'	7897'	gas
Dakota	7897'		gas
TD (4 1/2" liner)	8147'		

### Logging Program:

Cased hole - CBL - TD to 200' above TOC, GR/CNL across MV/Dk

### Mud Program:

<u>Interval</u>	<u>Type</u>	<u>Weight</u>	<u>Vis.</u>	<u>Fluid Loss</u>
0- 200'	Spud	8.4-9.0	40-50	no control
200-3637'	LSND	8.4-9.0	30-60	no control
3637-8147'	Gas <i>Air/Mist</i>	n/a	n/a	n/a

Pit levels will be visually monitored to detect gain or loss of fluid control.

### Casing Program (as listed, the equivalent, or better):

<u>Hole Size</u>	<u>Depth Interval</u>	<u>Csg. Size</u>	<u>Wt.</u>	<u>Grade</u>
12 1/4"	0' - 200'	9 5/8"	32.3#	WC-50
8 3/4"	0' - 3637'	7"	20.0#	J-55
6 1/4"	3537' - 8147'	4 1/2"	10.5#	J-55

### Tubing Program:

0' - 8147'      2 3/8"      4.70# EUE

### BOP Specifications, Wellhead and Tests:

#### Surface to Intermediate TD -

11" 2000 psi minimum double gate BOP stack (Reference Figure #1).  
After nipple-up prior to drilling out surface casing, rams and casing will be tested to 600 psi for 30 minutes.

#### Intermediate TD to Total Depth -

11" 2000 psi minimum double gate BOP stack (Reference Figure #1).  
After nipple-up prior to drilling out intermediate casing, rams and casing will be tested to 1500 psi for 30 minutes.

**Surface to Total Depth -**

2" nominal, 2000 psi minimum choke manifold (Reference Figure #3).

**Completion Operations -**

7 1/16" 2000 psi double gate BOP stack (Reference Figure #2).  
After nipple-up prior to completion, pipe rams, casing and liner top will be tested to 2000 psi for 15 minutes.

**Wellhead -**

9 5/8" x 7" x 2 3/8" x 3000 psi tree assembly.

**General -**

- Pipe rams will be actuated once each day and blind rams will be actuated once each trip to test proper functioning.
- An upper kelly cock valve with handle available and drill string valves to fit each drill string will be available on the rig floors at all times.
- BOP pit level drill will be conducted weekly for each drilling crew.
- All BOP tests and drills will be recorded in daily drilling reports.
- Blind and pipe rams will be equipped with extension hand wheels.

**Cementing:**

9 5/8" surface casing - cement with 163 sx Class "B" cement with 1/4# flocele/sx and 2% calcium chloride (188 cu.ft. of slurry, 200% excess to circulate to surface). WOC 8 hrs. Test casing to 600 psi for 30 minutes.

Saw tooth guide shoe on bottom. Bowspring centralizers will be run in accordance with Onshore Order #2.

**7" intermediate casing -**

Lead w/294 sx Class "B" w/3% metasilicate, 10# gilsonite/sx and 1/2# flocele/sx. Tail w/90 sx 50/50 Class "B" Poz w/2% calcium chloride, 2% gel, 1/2# flocele/sx, 10# gilsonite/sx (956 cu.ft. of slurry, 75% excess to circulate to surface.) WOC minimum of 8 hours before drilling out intermediate casing. If cement does not circulate to surface, a CBL will be run during completion operations to determine TOC. Test casing to 1500 psi for 30 minutes.

Cement nose guide shoe on bottom with float collar spaced on top of shoe joint. Bowspring centralizers spaced every other joint off bottom, to the base of the Ojo Alamo at 2437'. Two turbolating centralizers at the base of the Ojo Alamo at 2437'. Bowspring centralizers spaced every fourth joint from the base of the Ojo Alamo to the base of the surface casing.

## 4 1/2" Production Liner -

Cement to cover minimum of 100' of 4 1/2" x 7" overlap. Cement with 499 sx 50/50 Class "B" Poz with 2% gel, 1/4# flocele/sx, 5# gilsonite/sx, and 0.4% fluid loss additive (664 cu.ft., 40% excess to cement 4 1/2" x 7" overlap). WOC a minimum of 18 hrs prior to completing.

Cement float shoe on bottom with float collar spaced on top of shoe joint.

Note: To facilitate higher hydraulic stimulation completion work, no liner hanger will be used. Instead, a long string of 4 1/2" casing will be run and cemented with a minimum of 100' of cement overlap between the 4 1/2" x 7" casing strings. After completion of the well, a 4 1/2" CIBP will be set above the last fracturing job to cut and pull the 4 1/2" casing above the 7" casing shoe. The 4 1/2" bridge plug will then be milled and tubing will be run for completion.

Special Drilling Operations (Gas/Mist Drilling):

The following equipment will be operational while gas/mist drilling:

- An anchored blooie line will be utilized to discharge all cuttings and circulating medium to the blow pit a minimum of 100' from the wellhead.
- The blooie line will be equipped with an automatic igniter or pilot light.
- Compressors will be located a minimum of 100' from the wellhead in the opposite direction from the blooie line.
- Engines will have spark arresters or water cooled exhaust.
- Deduster equipment will be utilized.
- The rotating head will be properly lubricated and maintained.
- A float valve will be utilized above the bit.
- Mud circulating equipment, water, and mud materials will be sufficient to maintain control of the well.

Additional Information:

- The Dakota and Mesa Verde formations will be completed and commingled.
- No abnormal temperatures or hazards are anticipated.
- Anticipated pore pressures are as follows:

Fruitland Coal	300 psi
Pictured Cliffs	500 psi
Mesa Verde	700 psi
Dakota	2500 psi
- Sufficient LCM will be added to the mud system to maintain well control, if lost circulation is encountered.
- The west half is dedicated to the Dakota and the Mesa Verde in this well.
- This gas is dedicated.

  
Drilling Engineer

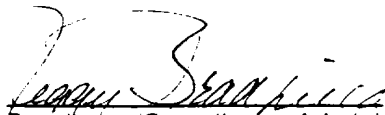
  
Date

# ***BURLINGTON RESOURCES***

Allison Unit #17M  
Multi-Point Surface Use Plan

1. Existing Roads - Refer to Map No. 1. Existing roads used to access the proposed location will be properly maintained for the duration of the project. Bureau of Land Management right-of-way has been applied for as shown on Map No. 1.
2. Planned Access Road - Refer to Map No. 1. The required new access road is shown on Map No. 1. The gradient, shoulder, crowning and other design elements will meet or exceed those specified by the responsible government agency. The new access road surface will not exceed twenty feet (20') in width. No additional turnarounds or turnouts will be required. Upon completion of the project, the access road will be adequately drained to control soil erosion. Approximately 1500' of access road will be constructed. Pipelines are indicated on Map No. 1A.
3. Location of Existing Wells - Refer to Map No. 1A.
4. Location of Existing and/or Proposed Facilities if Well is Productive -
  - a. On the Well Pad - Refer to Plat No. 1, anticipated production facilities plat.
  - b. Off the Well Pad - Anticipated pipeline facilities as shown on the attached plat from Williams Field Service.
5. Location and Type of Water Supply - Water will be hauled by truck for the proposed project and will be obtained from Faverino Water Hole located in NW/4 Section 7,T-32-N,R-6-W, New Mexico.
6. Source of Construction Materials - If construction materials are required for the proposed project, such materials will be obtained from a commercial quarry.
7. Methods of Handling Waste Materials - All garbage and trash materials will be removed from the site for proper disposal. A portable toilet will be provided for human waste and serviced in a proper manner. If liquids are left in the reserve pit after completion of the project, the pit will be fenced until the liquids have had adequate time to dry. The location clean-up will not take place until such time as the reserve pit can be properly covered over to prevent run-off from carrying waste materials into the watershed. Reserve pits will be lined as needed with either 12 mil bio-degradable plastic liner or a bentonite liner. All earthen pits will be so constructed as to prevent leakage from occurring; no earthen pit will be located on natural drainage. Generation of hazardous waste is not anticipated. Federal regulations will be adhered to regarding handling and disposal of such waste if so generated.
8. Ancillary Facilities - None anticipated.
9. Wellsite Layout - Refer to the location diagram and to the wellsite cut and fill diagram (Figure No. 4). The blow pit will be constructed with a 2'/160' grade to allow positive drainage to the reserve pit and prevent standing liquids in the blow pit.

10. Plans for Restoration of the Surface - After completion of the proposed project, the location will be cleaned and leveled. The location will be left in such a condition that will enable reseeding operations to be carried out. Seed mixture as designated by the responsible government agency will be used. The reseeding operations will be performed during the time period set forth by the responsible government agency. The permanent location facilities will be painted as designated by the responsible government agency.
11. Surface Ownership - Virginia Snodgrass
12. Other Information - Environmental stipulations as outlined by the responsible government agency will be adhered to. Refer to the archaeological report for a description of the topography, flora, fauna, soil characteristics, dwellings, historical and cultural sites.
13. Operator's Representative and Certification - Burlington Resources Oil & Gas Company Regional Drilling Manager, Post Office Box 4289, Farmington, NM 87499, telephone (505) 326-9700. I hereby certify that I, or persons under my direct supervision, have inspected the proposed drill site and access route; that I am familiar with the conditions which presently exist; that the statements made in this plan, are to the best of my knowledge, true and correct; and that the work associated with the operations proposed herein will be performed by Burlington Resources Oil and Gas Company and its contractors and subcontractors in conformity with this plan and the terms and conditions under which it is approved.

  
Regulatory/Compliance Administrator Date 6-13-98

2400' FNL & 810' FWL, SECTION 24, T32N, R7W, N.M.P.M.  
SAN JUAN COUNTY, NEW MEXICO

2400' FNL & 810' FWL, SECTION 24, T32N, R7W, N.M.P.M.

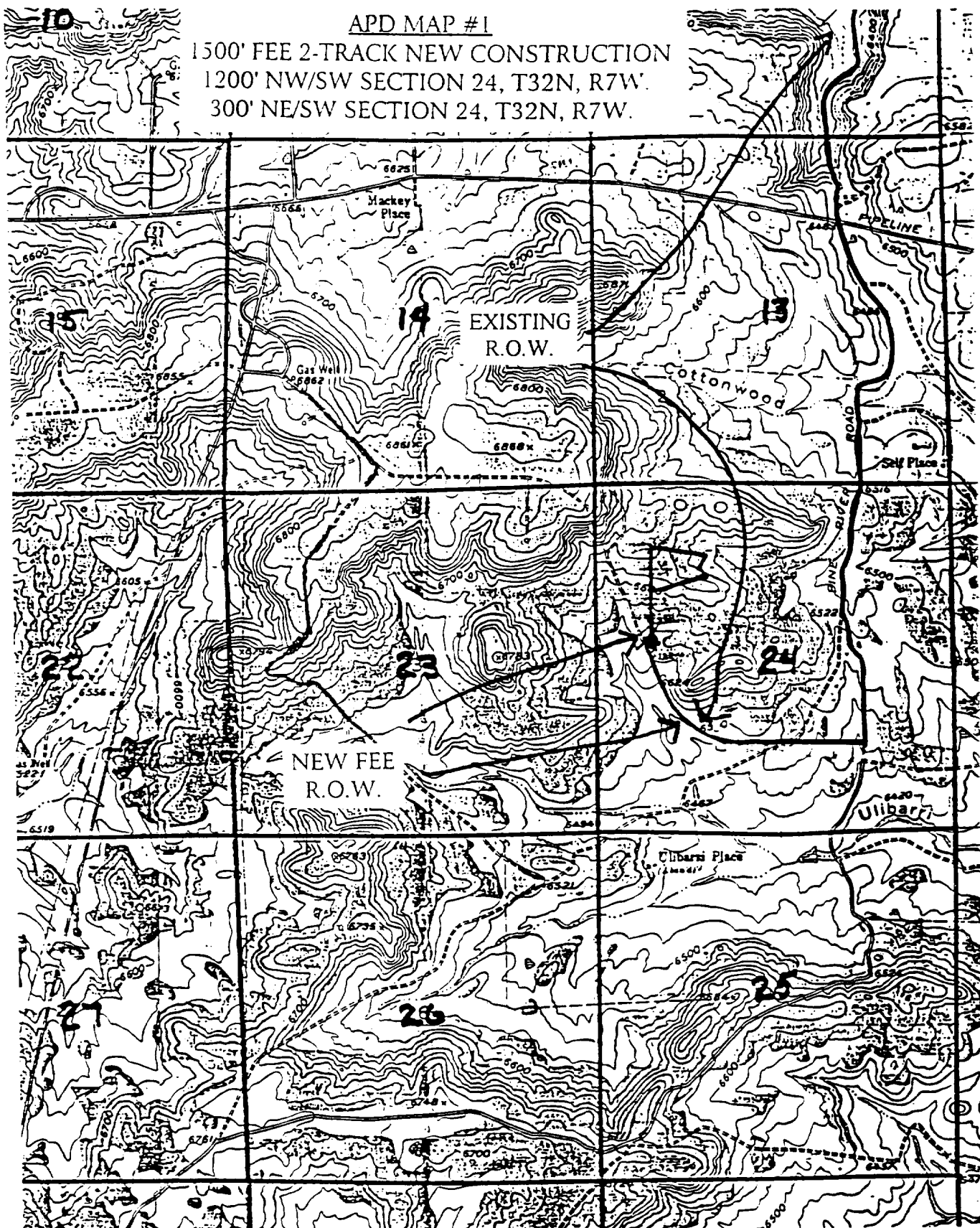
SAN JUAN COUNTY, NEW MEXICO

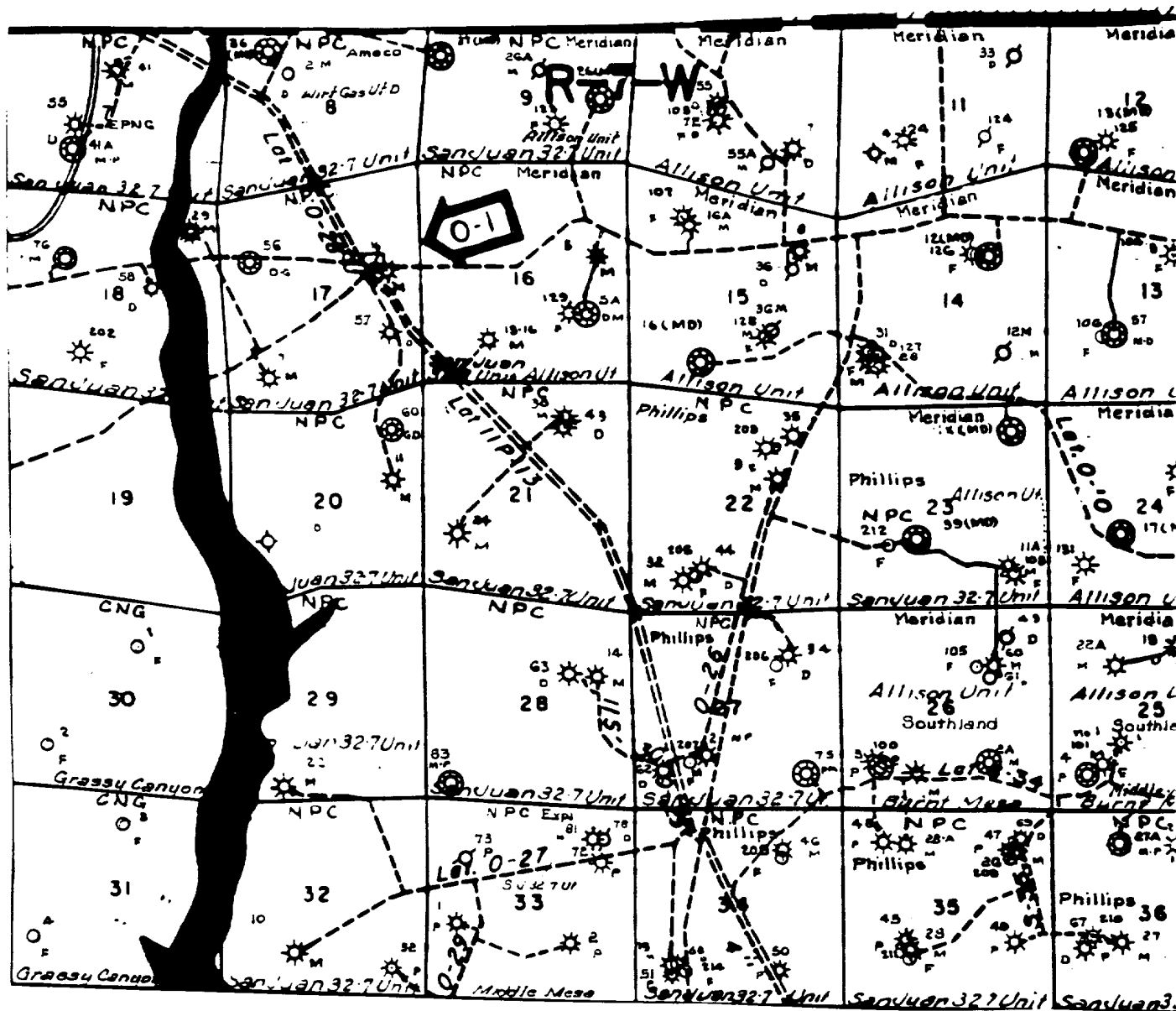
APD MAP #1

## 1500' FEE 2-TRACK NEW CONSTRUCTION

1200' NW/SW SECTION 24, T32N, R7W.

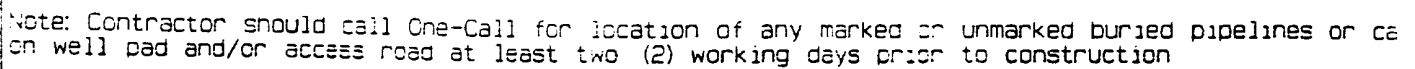
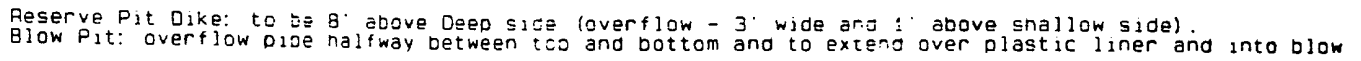
300' NE/SW SECTION 24, T32N, R7W.





MERIDIAN OIL INC.  
 Pipeline Map  
 T-32-N, R-07-W  
 San Juan County, New Mexico  
 Allison Unit 17M  
 Map 1A

GROUND ELEVATION: 6550' DATE: MAY 20, 1998





***BURLINGTON RESOURCES OIL AND GAS COMPANY***

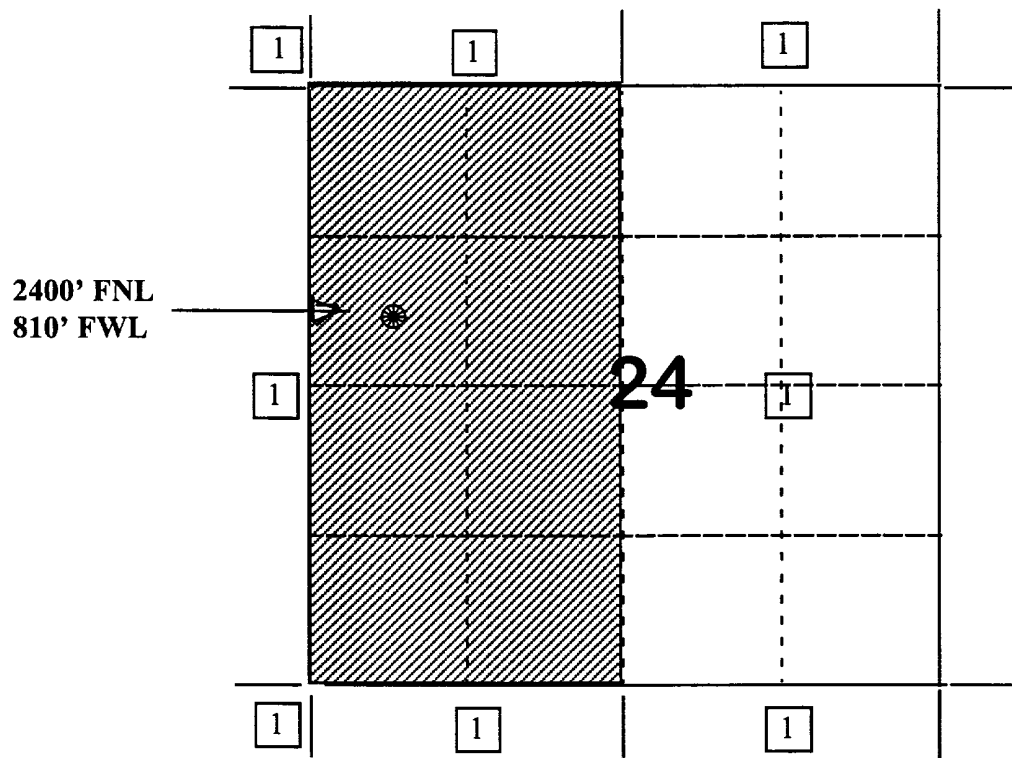
**Allison Unit #17M**

**OFFSET OPERATOR/OWNER PLAT**

**Nonstandard Location**

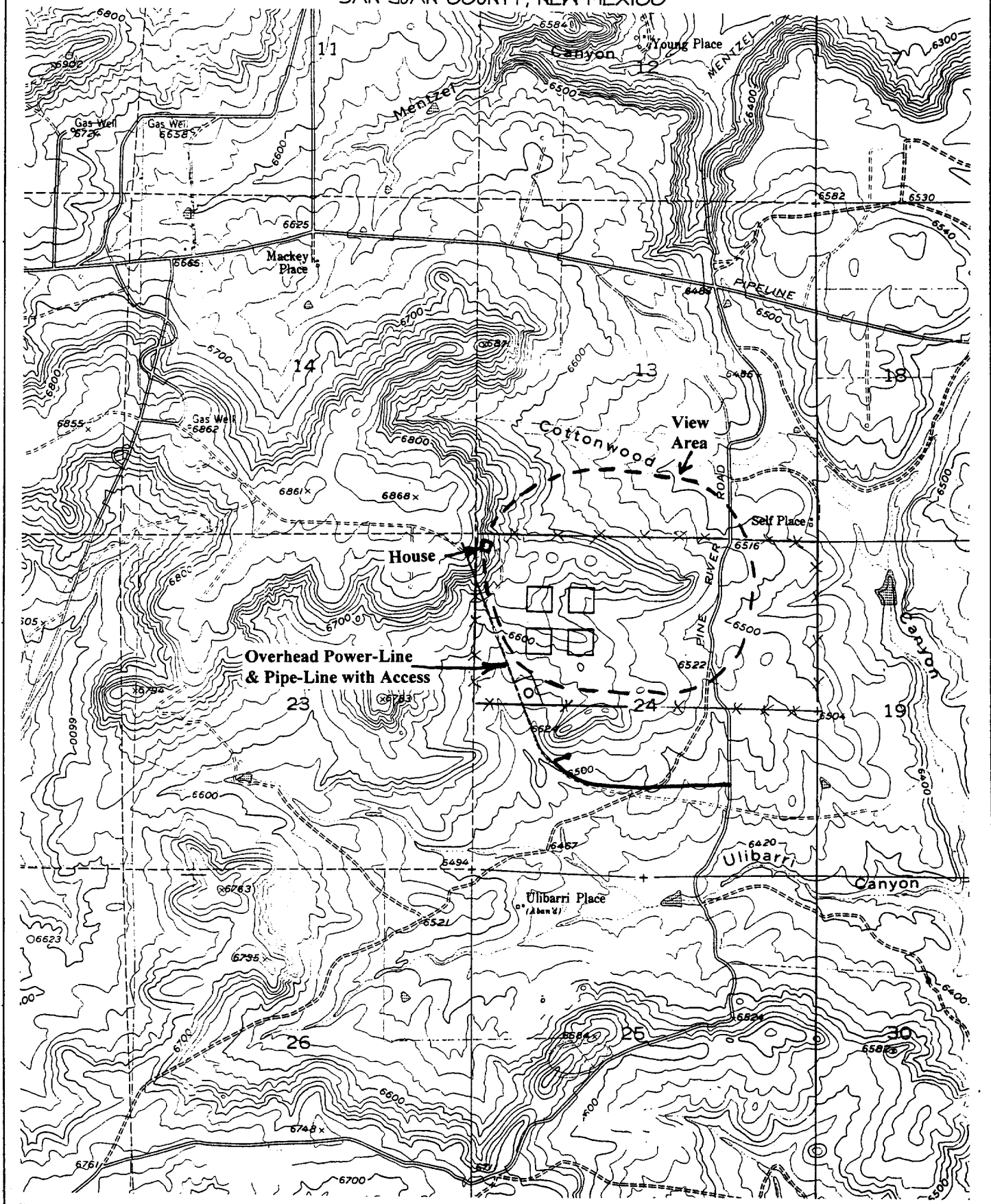
**Mesaverde/Dakota Formations**

**Township 32 North, Range 7 West**



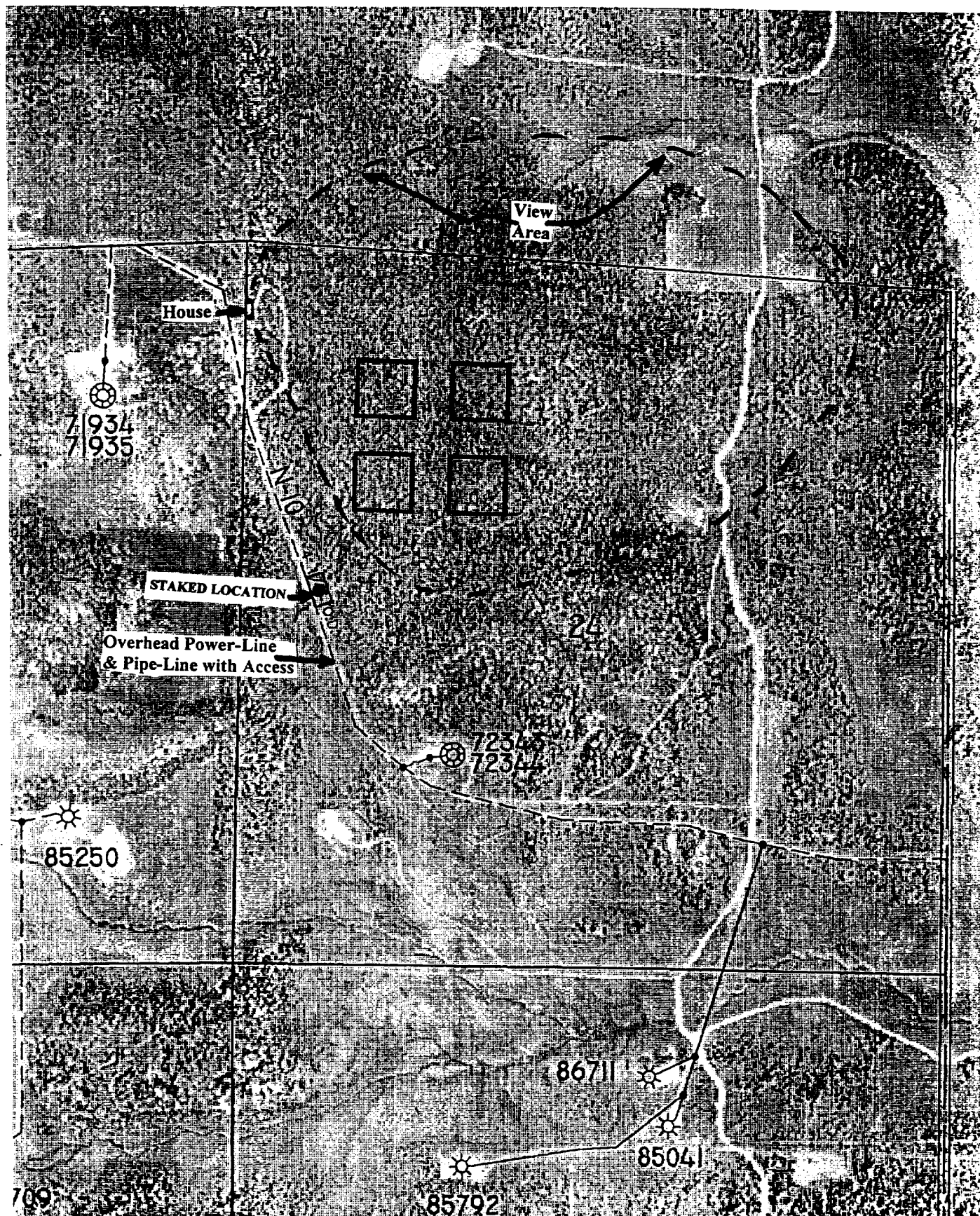
1) Burlington Resources

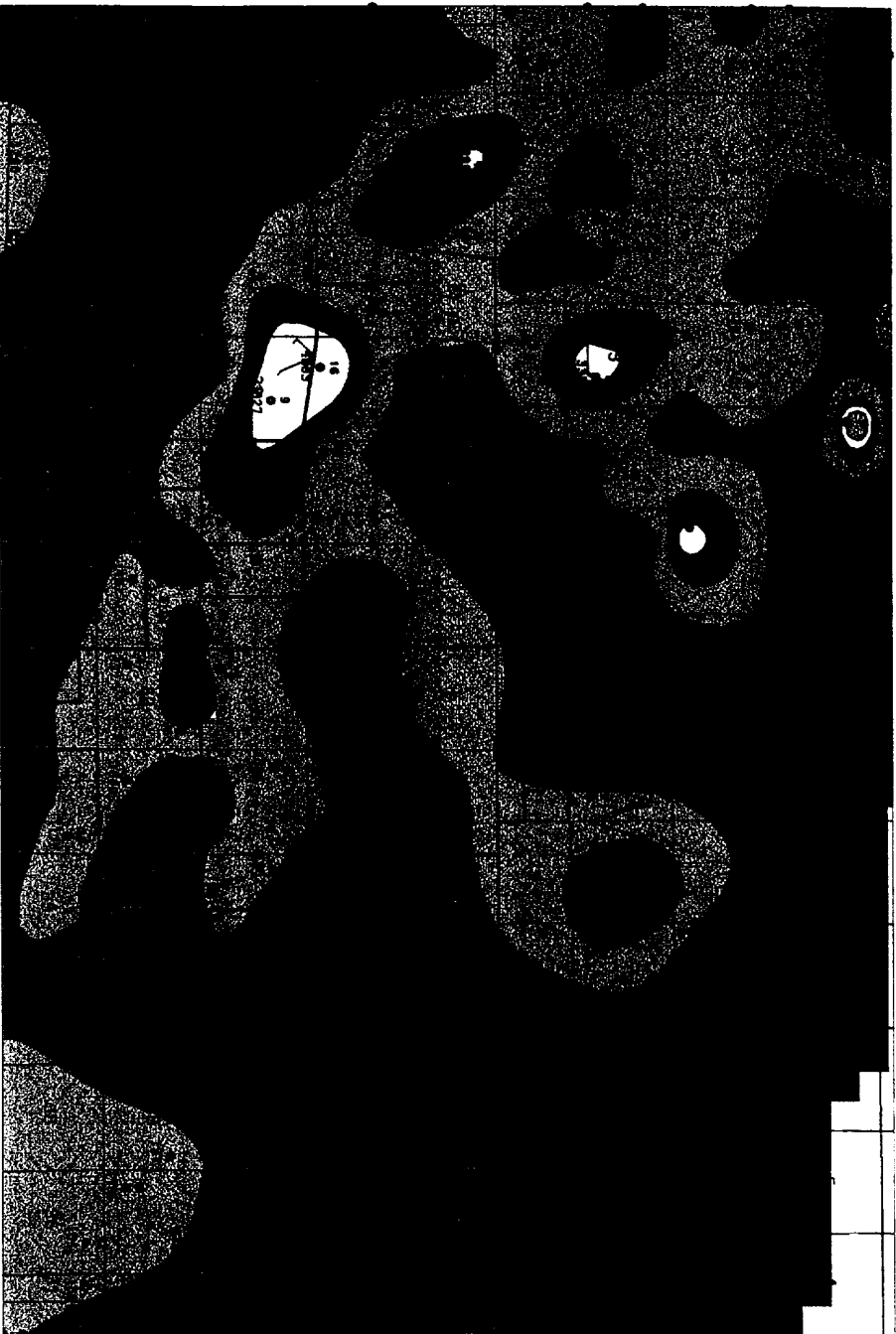
2400' FNL & 810' FWL, SECTION 24, T32N, R7W, N.M.P.M.  
SAN JUAN COUNTY, NEW MEXICO



BURLINGTON RESOURCES OIL & GAS COMPANY ALLISON UNIT #17M

2400' FNL & 810' FWL, SECTION 24, T32N, R7W, N.M.P.M.  
SAN JUAN COUNTY, NEW MEXICO





• *Proposed Location*  
*Allison #17M*

☐ *Spacing Unit*  
*Allison #17M*

BURLINGTON RESOURCES			
FARMINGTON NM			
ALLISON UNIT			
MESERVEDE CUM PRODUCTION (112/97)			
CI = 1 BCF			
DATE	BY	REVIEWED	DATE
11/11/97	J. DEHART	11/11/97	11/11/97



Proposed Location  
 Allison #17M  
 Spacing Unit  
 Allison #17M

BURLINGTON RESOURCES	
FARMINGTON, NM	
ALLISON UNIT	
UPPER CUBERO	
NUMBER OF FEET WITH RT > 100 OHMS	
C1 = 5'	
GEOLOGIST: D. CLARK	
J. DEBART	20-1105-58

GTON  
CES

**Type Log**  
**Allison Unit Dakota**  
**Allison Unit #12**  
**San Juan County, NM**

12N

DATUM FOR ELEV: GL

DATE LOGGED: 11/20/57

VERTICAL SCALE: 1"=1 in: 50 ft"

ELEV: 6645

RANGE: 7857.0-8320.0

PTH: 8320

DATE PLOTTED: 18-Aug-1998

