

District I  
PO Box 1980, Hobbs, NM 88241-1980  
District II  
811 South First, Artesia, NM 88210  
District III  
1000 Rio Brazos Rd., Aztec, NM 87410  
District IV  
2040 South Pacheco, Santa Fe, NM 87505

State of New Mexico  
Energy, Minerals & Natural Resources Department

OIL CONSERVATION DIVISION  
2040 South Pacheco  
Santa Fe, NM 87505

Form C-101  
Revised October 18, 1994  
Instructions on back  
Submit to Appropriate District Office  
State Lease - 6 Copies  
Fee Lease - 5 Copies



AMENDED REPORT

APPLICATION FOR PERMIT TO DRILL, RE-ENTER, DEEPEN, PLUGBACK, OR ADD A ZONE

<sup>1</sup> Operator Name and Address. Burlington Resources PO Box 4289, Farmington, NM 87499		<sup>2</sup> OGRID Number -14538
<sup>3</sup> API Number 30-045-29808		<sup>4</sup> Well No. #6R
<sup>5</sup> Property Code 6784	<sup>6</sup> Property Name Allison Unit	

<sup>7</sup> Surface Location									
UL or lot no.	Section	Township	Range	Lot Idn	Feet from the	North/South line	Feet from the	East/West line	County
N	16	32N	6W		1065'	South	1755'	West	San Juan

<sup>8</sup> Proposed Bottom Hole Location If Different From Surface									
UL or lot no.	Section	Township	Range	Lot Idn	Feet from the	North/South line	Feet from the	East/West line	County
<sup>9</sup> Proposed Pool 1 Blanco Mesaverde - 72319					<sup>10</sup> Proposed Pool 2 Basin Dakota - 71599				

<sup>11</sup> Work Type Code N	<sup>12</sup> Well Type Code G	<sup>13</sup> Cable/Rotary Rotary	<sup>14</sup> Lease Type Code STATE	<sup>15</sup> Ground Level Elevation 6121'GR
<sup>16</sup> Multiple	<sup>17</sup> Proposed Depth 7653'	<sup>18</sup> Formation Mesaverde/Dakota	<sup>19</sup> Contractor N/a	<sup>20</sup> Spud Date N/a

<sup>21</sup> Proposed Casing and Cement Program					
Hole Size	Casing Size	Casing weight/foot	Setting Depth	Sacks of Cement	Estimated TOC
12 3/4"	9 5/8"	32.3#	200'	188 cu ft	Surface
8 3/4"	7"	20#	3199'	842 cu ft	Surface
6 1/4"	4 1/2"	10.5#	3099'-7653'	654 cu ft	Surface

<sup>22</sup> Describe the proposed program. If this application is to DEEPEN or PLUG BACK give the data on the present productive zone and proposed new productive zone. Describe the blowout prevention program, if any. Use additional sheets if necessary.

11" 2000 psi minimum double gate BOP

Note: to facilitate higher hydraulic stimulation completion work, no liner hanger will be used. In its place, a long string of 4 1/2" casing will be run and cemented with a minimum of 100' of cement overlap between the 4 1/2" and 7" casing strings. After completion of the well, a 4 1/2" retrievable bridge plug will be set below the top of cement in the 4 1/2" x 7" overlap. The 4 1/2" casing will then be backed off above the top of cement in the 4 1/2" x 7" overlap and laid down. The liner top can then be pressure tested to ensure a seal between the liner top and the 7" casing has been achieved. The test pressure shall be the maximum anticipated pressure to which the seal will be exposed (700 psi for the Mesa Verde and 2500 psi for the Dakota). The 4 1/2" bridge plug will then be retrieved and the production tubing will be run to produce the well.

<sup>23</sup> I hereby certify that the information given above is true and complete to the best of my knowledge and belief. Signature: <i>Peggy Bradfield</i> Printed name: Peggy Bradfield (vkh) Title: Regulatory/Compliance Administrator Date: 1-26-99		OIL CONSERVATION DIVISION Approved by: <i>Ernie Burch</i> 2-2-99 Title: DEPUTY OIL & GAS INSPECTOR, DIST. 4 Approval Date: FEB 2 1999 Expiration Date: FEB 2 2000 Conditions of Approval: Attached <input type="checkbox"/>	
---	--	---	--

District I  
PO Box 1980, Hobbs, NM 88241-1980

District II  
PO Drawer 00, Artesia, NM 88211-0719

District III  
1000 Rio Brazos Rd., Aztec, NM 87410

District IV  
PO Box 2088, Santa Fe, NM 87504-2088

State of New Mexico  
Energy, Minerals & Natural Resources Department

OIL CONSERVATION DIVISION  
PO Box 2088  
Santa Fe, NM 87504-2088

Form C-102  
Revised February 21, 1994  
Instructions on back  
Submit to Appropriate District Office  
State Lease - 4 Copies  
Fee Lease - 3 Copies

☐ AMENDED REPORT

WELL LOCATION AND ACREAGE DEDICATION PLAT

1 API Number 30-045- <i>29808</i>		2 Pool Code 72319/71599		3 Pool Name Blanco Mesaverde/Basin Dakota		
4 Property Code 6784		5 Property Name ALLISON UNIT			6 Well Number 6R	
7 OGRID No. 14538		8 Operator Name BURLINGTON RESOURCES OIL & GAS COMPANY			9 Elevation 6121'	

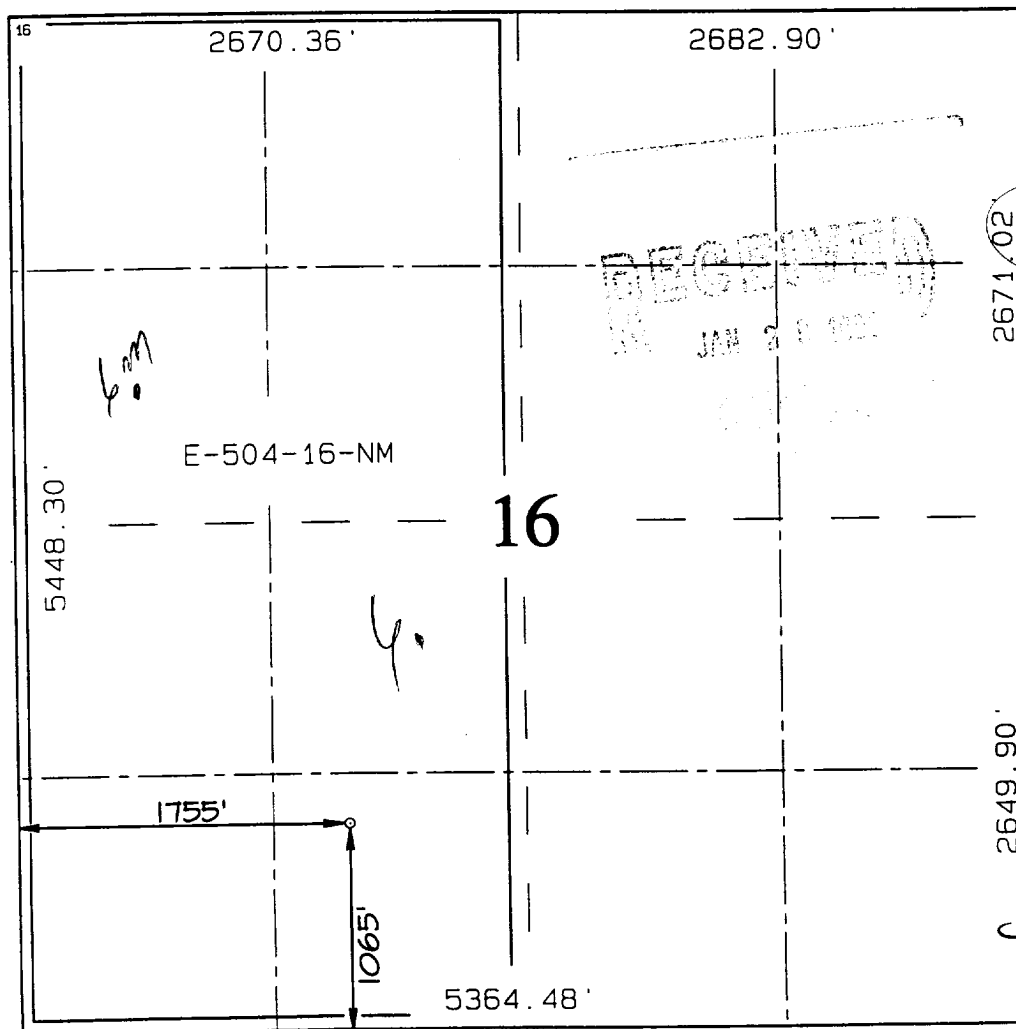
10 Surface Location

UL or lot no.	Section	Township	Range	Lot Idn	Feet from the	North/South line	Feet from the	East/West line	County
N	16	32N	6W		1065	SOUTH	1755	WEST	SAN JUAN

11 Bottom Hole Location If Different From Surface

UL or lot no.	Section	Township	Range	Lot Idn	Feet from the	North/South line	Feet from the	East/West line	County
12 Dedicated Acres MV-W/320 DK-W/320		13 Joint or Infill		14 Consolidation Code		15 Order No.			

NO ALLOWABLE WILL BE ASSIGNED TO THIS COMPLETION UNTIL ALL INTERESTS HAVE BEEN CONSOLIDATED  
OR A NON-STANDARD UNIT HAS BEEN APPROVED BY THE DIVISION



17 OPERATOR CERTIFICATION  
I hereby certify that the information contained herein is true and complete to the best of my knowledge and belief

*Peggy Bradfield*  
Signature  
Peggy Bradfield  
Printed Name  
Regulatory Administrator  
Title  
1-28-99  
Date

18 SURVEYOR CERTIFICATION  
I hereby certify that the well location shown on this plat was plotted from field notes of actual surveys made by me or under my supervision, and that the same is true and correct to the best of my belief.

JULY 15, 1998  
Date of Survey  
Signature and Seal of Professional Surveyor  
NEALE C. EDWARDS  
NEW MEXICO  
6897  
Certificate Number