

UNITED STATES
DEPARTMENT OF THE INTERIOR
BUREAU OF LAND MANAGEMENT

SUBMIT IN TRIPLICATE

FORM APPROVED
OMB NO. 1004-0136

EXPEDITED Right-of-Way

APPLICATION FOR PERMIT TO DRILL OR DEEPEN

1a. TYPE OF WORK

DRILL ☒ -DEEPEN ☐

b. TYPE OF WELL

OIL WELL ☐ GAS WELL ☒ OTHER ☐SINGLE ZONE ☒ -MULTIPLE ZONE ☐

2. NAME OF OPERATOR

Koch Exploration Company

3. ADDRESS AND TELEPHONE NO.

P.O. Box 489, Aztec, NM (505) 334-9111

4. LOCATION OF WELL (Report location clearly and in accordance with any State requirements.)*

At surface

710' FNL & 1260' FEL

At proposed prod. zone

Same

14. DISTANCE IN MILES AND DIRECTION FROM NEAREST TOWN OR POST OFFICE*

Approx. 18 miles NE of Aztec, NM

15. DISTANCE FROM PROPOSED* LOCATION TO
NEAREST PROPERTY OR LEASE LINE, FT. (Also to
nearest delg. unit line, if any)

710'

16. NO. OF ACRES IN LEASE

317.06

17. NO. OF ACRES ASSIGNED TO THIS WELL

317.06 N/2

18. DISTANCE FROM PROPOSED* LOCATION TO
NEAREST WELL, DRILLING, COMPLETED, OR
APPLIED FOR ON THE LEASE, FT.

725'

19. PROPOSED DEPTH
6500' -

20. ROTARY OR CABLE TOOLS

Rotary

21. ELEVATIONS (Show whether DF, RT, GR, etc.)

6876' GR

22. APPROXIMATE DATE WORK WILL START*

10/1/2001

23

PROPOSED CASING AND CEMENTING PROGRAM

SIZE OF HOLE	GRADE, SIZE OF CASING	WEIGHT PER FOOT	SETTING DEPTH	QUANTITY OF CEMENT - Top
12 1/4"	9 5/8" J-55	36#	220 +/-	112 sacks Circ
8 3/4"	7" J-55	23#	4250' +/-	510 sacks Circ
6 1/4"	4 1/2" J-55	10.5#	6500' -	203 sacks 5150

See Attached

This action is subject to technical and
procedural review pursuant to 43 CFR 3160.3
and appeal pursuant to 43 CFR 3160.4.DRILLING OPERATIONS AUTHORIZED ARE
SUBJECT TO COMPLIANCE WITH ATTACHED
"GENERAL REQUIREMENTS"

RECEIVED

2001 JUL 24 PM 3:26

070 FORT



IN ABOVE SPACE DESCRIBE PROPOSED PROGRAM: If proposal is to deepen, give data on present productive zone and proposed new productive zone. If proposal is to drill or deepen directionally, give pertinent data on subsurface locations and measured and true vertical depths. Give blowout preventer program, if any.

24

SIGNED:

TITLE: Operations Manager

DATE:

7/3/01

(This space for Federal or State office use)

PERMIT NO.

APPROVAL DATE:

8/13/01

Application approval does not warrant or certify that the applicant holds legal or equitable title to those rights in the subject lease which would entitle the applicant to conduct operations thereon.
CONDITIONS OF APPROVAL, IF ANY:

APPROVED BY:

TITLE: AFM Minerals

DATE:

8/13/01

2013年12月26日
 2013年12月26日
 2013年12月26日

1. 1940 1941 1942 1943 1944 1945 1946 1947 1948 1949 1950 1951 1952 1953 1954 1955 1956 1957 1958 1959 1960 1961 1962 1963 1964 1965 1966 1967 1968 1969 1970 1971 1972 1973 1974 1975 1976 1977 1978 1979 1980 1981 1982 1983 1984 1985 1986 1987 1988 1989 1990 1991 1992 1993 1994 1995 1996 1997 1998 1999 2000 2001 2002 2003 2004 2005 2006 2007 2008 2009 2010 2011 2012 2013 2014 2015 2016 2017 2018 2019 2020 2021 2022 2023 2024 2025 2026 2027 2028 2029 2030 2031 2032 2033 2034 2035 2036 2037 2038 2039 2040 2041 2042 2043 2044 2045 2046 2047 2048 2049 2050 2051 2052 2053 2054 2055 2056 2057 2058 2059 2060 2061 2062 2063 2064 2065 2066 2067 2068 2069 2070 2071 2072 2073 2074 2075 2076 2077 2078 2079 2080 2081 2082 2083 2084 2085 2086 2087 2088 2089 2090 2091 2092 2093 2094 2095 2096 2097 2098 2099

District I
1801 Box 1980, Hobbs, NM 88241-1980
District II
811 South First, Artesia, NM 88210
District III
1000 Rio Brazos Rd., Aztec, NM 87410
District IV
2040 South Pacheco, Santa Fe, NM 87505

State of New Mexico
Energy, Minerals & Natural Resources Department

OIL CONSERVATION DIVISION
2040 South Pacheco
Santa Fe, NM 87505

Form C-102
Revised October 18, 1994
Instructions on back
Submit to Appropriate District Office
State Lease - 4 Copies
Fee Lease - 3 Copies

☐ AMENDED REPORT

WELL LOCATION AND ACREAGE DEDICATION PLAT

1. API Number 30.045-30742		2. Pool Code		3. Pool Name Blanco Mesa Verde	
4. Property Code 5656		5. Property Name GARDNER		6. Well Number 6A	
7. OGRID No. 12807		8. Operator Name KOCH EXPLORATION		9. Elevation 6876	

10. Surface Location

UL or lot no. A	Section 25	Township 32N	Range 9W	Lot Idn	Feet from the 710'	North/South line NORTH	Feet from the 1260'	East/West line EAST	County SAN JUAN
---------------------------	----------------------	------------------------	--------------------	---------	------------------------------	----------------------------------	-------------------------------	-------------------------------	---------------------------

11. Bottom Hole Location If Different From Surface

UL or lot no.	Section	Township	Range	Lot Idn	Feet from the	North/South line	Feet from the	East/West line	County
12. Dedicated Acres 317.06		13. Joint or Infill		14. Consolidation Code		15. Order No.			

NO ALLOWABLE WILL BE ASSIGNED TO THIS COMPLETION UNTIL ALL INTERESTS HAVE BEEN CONSOLIDATED OR A NON-STANDARD UNIT HAS BEEN APPROVED BY THE DIVISION

16		N88°56'W		5229.84'		2614.92'	
5231.52'		4		3		2	
5		6		7		8	
		NM-013642				5239.74'	
						2614.87'	
SECTION 25							
12		11		15		14	
N02°10'E		13		14		N00°49'E	
		N89°08'W		5355.24'			

RECEIVED
AUG 2001
OIL CON DIV
DIST. 3

17 OPERATOR CERTIFICATION
I hereby certify that the information contained herein is true and complete to the best of my knowledge and belief
Boif A. Ornelas
Signature
Boif A. Ornelas
Printed Name
Sr. Engineer
Title
Aug 17, 2001
Date

18 SURVEYOR CERTIFICATION
I hereby certify that the well location shown on this plat was plotted from field notes of actual surveys made by me or under my supervision, and that the same is true and correct to the best of my belief.
04/20/01
Date of Survey
Signature and Seal of Professional Surveyor:
Henry B. Brink
Certificate Number

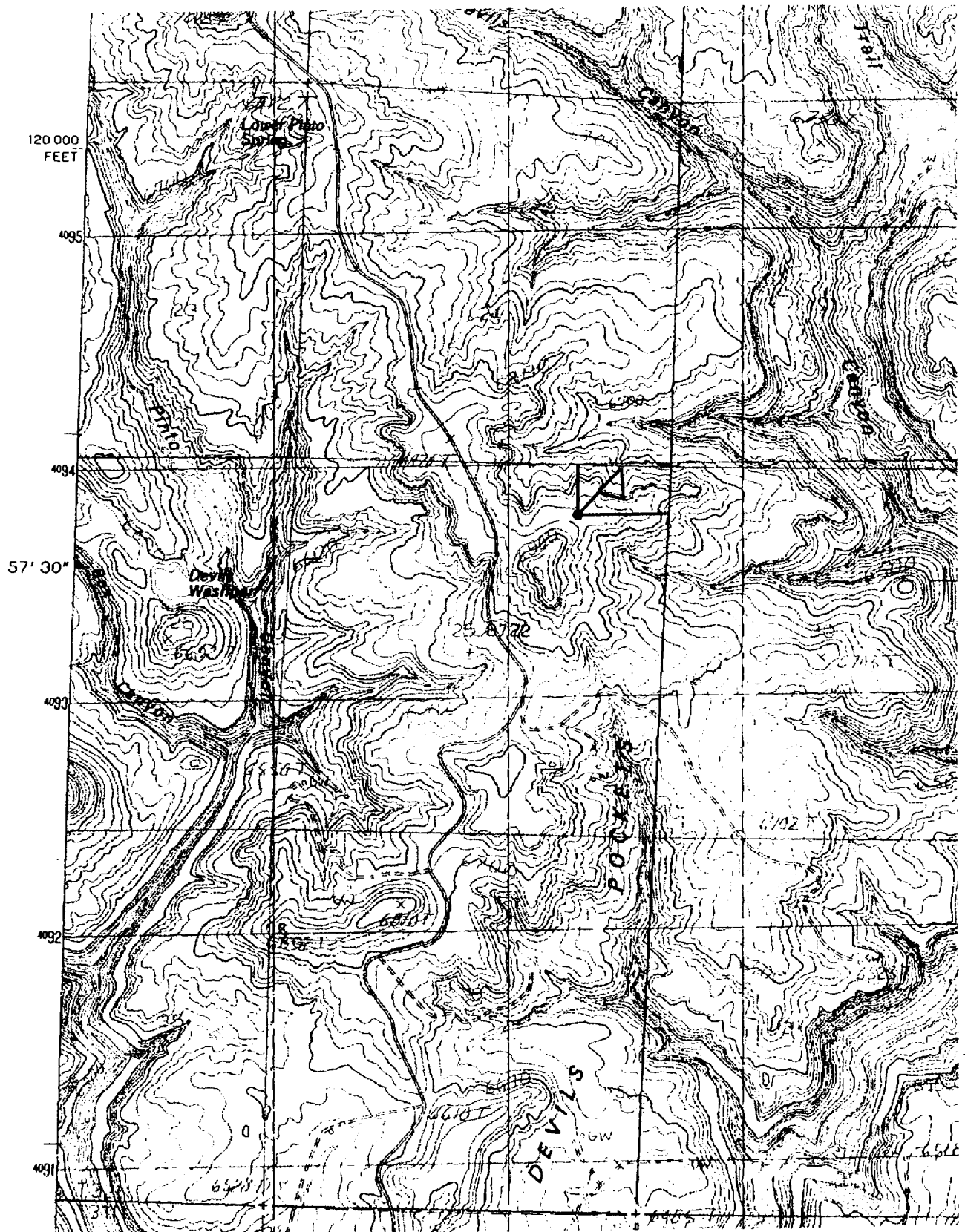
KOCH EXPLORATION CO.

GARDNER #6A

710' FNL, 1260' FEL, EL. 6876

SECTION 25, T-32-N, R-9-W, N.M.P.M.,

SAN JUAN COUNTY, NEW MEXICO



ANASTACIO SPRING — N.M., COLO.

EXHIBIT A