

COMPANY Aztec Oil and Gas Company

Well Name & No. Horton #1

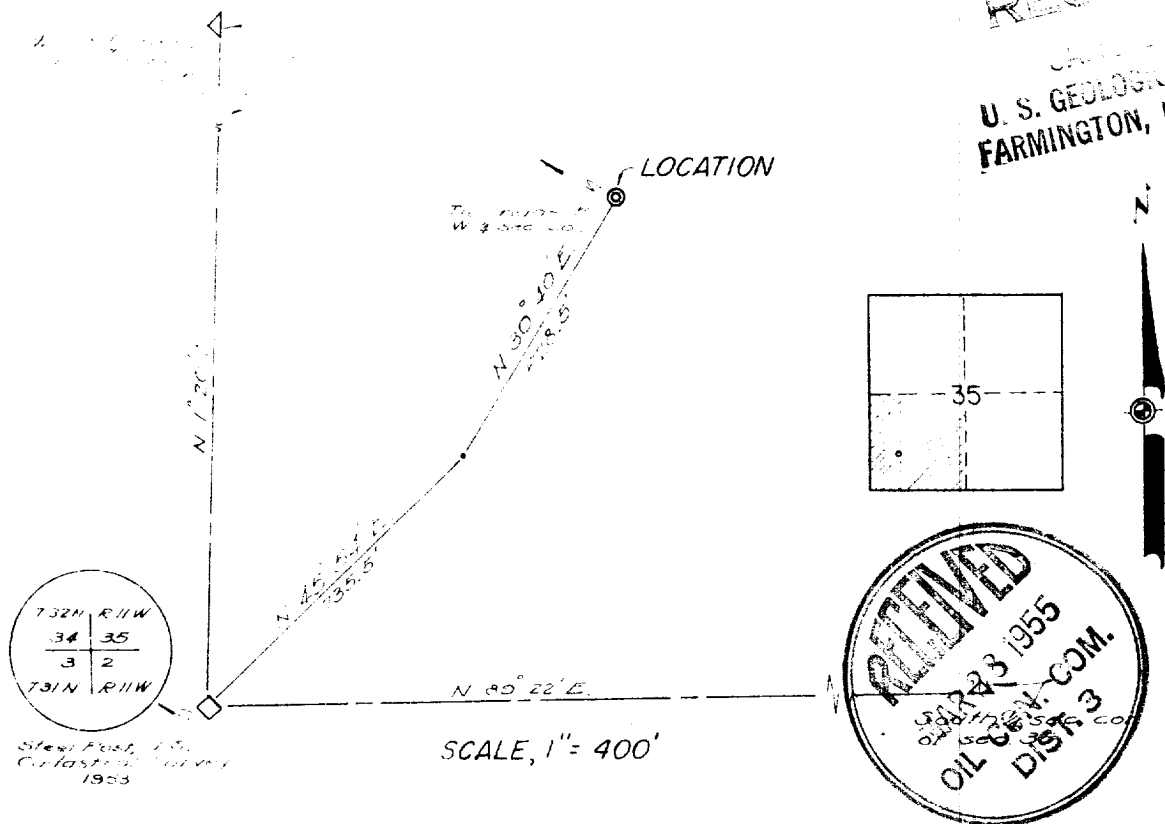
Lease No. NM 010 989

Location 1043' from the South line and 824' from the West line.

Being in the SW¹ of the SW¹

Sec. 35, 32 N., 11 W., N.M.P.M., San Juan County, New Mexico.

Ground Elevation 6005, ungraded. Starting elevation taken from EPNG wells, Hudge #9
and Fields #7.



Surveyed January 15, 1955

This is to certify that the above plat was prepared from field notes of actual surveys made by me or under my supervision and that the same are true and correct to the best of my knowledge and belief.

Ernest V. Echohawk
Registered Land Surveyor
N. M. Reg. #1545

