

NO. OF COPIES RECEIVED	5
DISTRIBUTION	
SANTA FE	1
FILE	1
U.S.G.S.	2
LAND OFFICE	
OPERATOR	1

NEW MEXICO OIL CONSERVATION COMMISSION

Form C-101
Revised 1-1-65 *SC-045-20483*

5A. Indicate Type of Lease	
STATE <input type="checkbox"/>	FEE <input checked="" type="checkbox"/>

5. State Oil & Gas Lease No.

APPLICATION FOR PERMIT TO DRILL, DEEPEN, OR PLUG BACK

1a. Type of Work		7. Unit Agreement Name	
b. Type of Well OIL WELL <input type="checkbox"/> GAS WELL <input checked="" type="checkbox"/> OTHER <input type="checkbox"/>		8. Farm or Lease Name <i>Decker</i>	
2. Name of Operator <i>Azteco Oil and Gas Company</i>		9. Well No. <i>4</i>	
3. Address of Operator <i>Drawer 570, Farmington, New Mexico</i>		10. Field and Pool, or Wildcat <i>Mesaverde-Dakota</i>	
4. Location of Well UNIT LETTER <i>M</i> LOCATED <i>990</i> FEET FROM THE <i>South</i> LINE AND <i>990</i> FEET FROM THE <i>West</i> LINE OF SEC. <i>10</i> TWP. <i>32N</i> RGE. <i>12W</i> NMPM		12. County <i>San Juan</i>	
21. Elevations (Show whether DI, RT, etc.) <i>6055</i>		19. Proposed Depth <i>7310</i>	19A. Formation <i>Mesaverde-Dakota</i>
21A. Kind & Status Plug. Bond	21B. Drilling Contractor	20. Rotary or C.T. <i>rotary</i>	
22. Approx. Date Work will start			

PROPOSED CASING AND CEMENT PROGRAM

SIZE OF HOLE	SIZE OF CASING	WEIGHT PER FOOT	SETTING DEPTH	SACKS OF CEMENT	EST. TOP
15"	10-3/4"	32.75#	300'	150 sx	
9-7/8"	7-5/8"	26.40#	4800'	300 sx	
6-3/4"	4-1/2"	10.5# & 11.6#	7310'	600 sx	

Propose to:

Drill 15" hole and set 10-3/4" casing at 300' cement w/150 sx
Drill 9-7/8" hole and set 7-5/8" at 4800' cement with 300 sx
Drill 6-3/4" hole to TD 7310', run 4 1/2" liner to TD cement w/600 sx
Perforate and frac Mesaverde and Dakota zones
Run Baker Model "D" production packer
Run 2-3/8" tubing

APPROVAL VALID
FOR 90 DAYS UNLESS
DRILLING COMMENCED,

EXPIRES *July 31, 1969*

IN ABOVE SPACE DESCRIBE PROPOSED PROGRAM: IF PROPOSAL IS TO DEEPEN OR PLUG BACK, GIVE DATA ON PRESENT PRODUCTIVE ZONE AND PROPOSED NEW PRODUCTION ZONE. GIVE BLOWOUT PREVENTER PROGRAM, IF ANY.

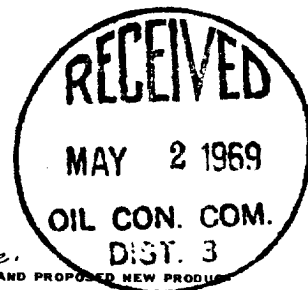
I hereby certify that the information above is true and complete to the best of my knowledge and belief.

Signed *Joe C. Johnson* Title *District Superintendent* Date *4-30-69*

(This space for State Use)

APPROVED BY *Emmy C. Camp* TITLE *Sgt Dist Tll* DATE *5-2-69*

CONDITIONS OF APPROVAL, IF ANY:



**NEW MEXICO OIL CONSERVATION COMMISSION
WELL LOCATION AND ACREAGE DEDICATION PLAT**

Form C-102
Supersedes C-128
Effective 1-4-65

All distances must be from the outer boundaries of the Section.

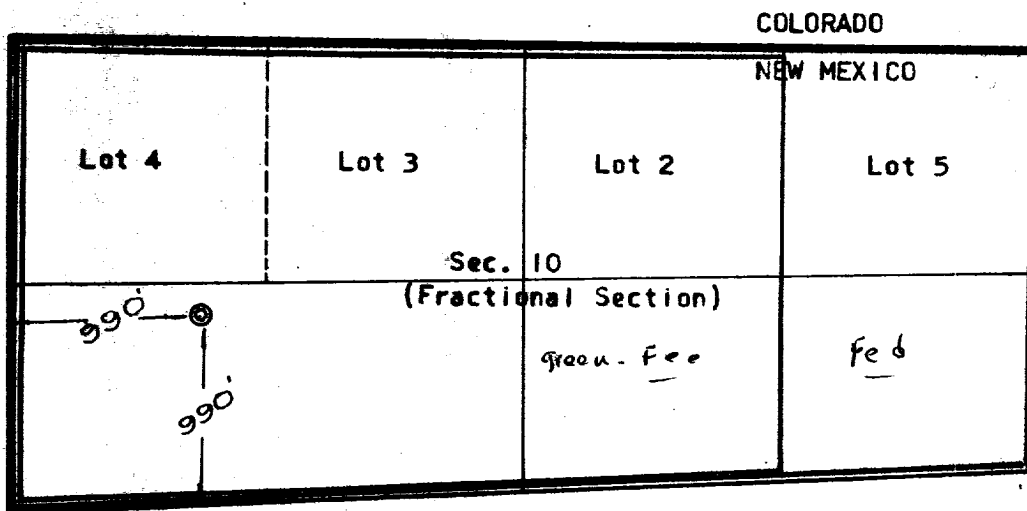
Operator ATTEC OIL & GAS COMPANY			Lease Decker		Well No. 4
Unit Letter M	Section 10	Township 32 North	Range 12 West	County San Juan	
Actual Footage Location of Well: 990 feet from the South line and 990 feet from the West line					
Ground Level Elev: 6055	Producing Formation Mesaverde - Dakota		Pool Blanco Mesaverde-Basin Dakota	Dedicated Acreage 3.21 Acres	

1. Outline the acreage dedicated to the subject well by colored pencil or hatchure marks on the plat below.
2. If more than one lease is dedicated to the well, outline each and identify the ownership thereof (both as to working interest and royalty).
3. If more than one lease of different ownership is dedicated to the well, have the interests of all owners been consolidated by communitization, unitization, force-pooling, etc?

☒ Yes ☐ No If answer is "yes," type of consolidation communitization

If answer is "no," list the owners and tract descriptions which have actually been consolidated. (Use reverse side of this form if necessary.) _____

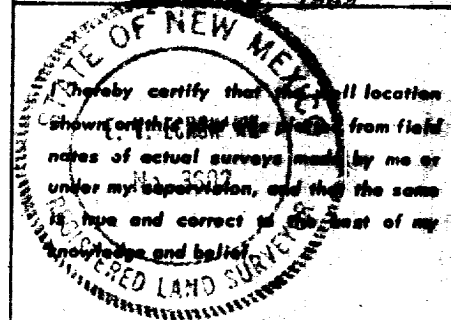
No allowable will be assigned to the well until all interests have been consolidated (by communitization, unitization, forced-pooling, or otherwise) or until a non-standard unit, eliminating such interests, has been approved by the Commission.



CERTIFICATION

I hereby certify that the information contained herein is true and complete to the best of my knowledge and belief.

Name Joe C. Salmon
 Position District Superintendent
 Company Attec Oil and Gas
 Date April 24, 1969



Date Surveyed April 1, 1969
 Registered Professional Engineer and/or Land Surveyor
E. V. T. [Signature]
 Certificate No. **3602**

