

UNITED STATES  
DEPARTMENT OF THE INTERIOR  
GEOLOGICAL SURVEY

30-045-21753

## APPLICATION FOR PERMIT TO DRILL, DEEPEN, OR PLUG BACK

## 1a. TYPE OF WORK

DRILL ☒DEEPEN ☐PLUG BACK ☐

## b. TYPE OF WELL

OIL  
WELL ☒GAS  
WELL ☐

OTHER

SINGLE  
ZONE ☐MULTIPLE  
ZONE ☐

## 2. NAME OF OPERATOR

Dugan Production Corp.

## 3. ADDRESS OF OPERATOR

Box 234, Farmington, New Mexico 87401

## 4. LOCATION OF WELL (Report location clearly and in accordance with any State requirements.)\*

At surface

330' FSL -- 990' FEL

At proposed prod. zone

## 14. DISTANCE IN MILES AND DIRECTION FROM NEAREST TOWN OR POST OFFICE\*

15 miles northeast Shiprock, New Mexico

## 15. DISTANCE FROM PROPOSED\*

LOCATION TO NEAREST  
PROPERTY OR LEASE LINE, FT.  
(Also to nearest drlg. unit line, if any) 330'

## 16. NO. OF ACRES IN LEASE

2240

17. NO. OF ACRES ASSIGNED  
TO THIS WELL

40

18. DISTANCE FROM PROPOSED LOCATION\*  
TO NEAREST WELL, DRILLING, COMPLETED,  
OR APPLIED FOR, ON THIS LEASE, FT.

1000' approx

## 19. PROPOSED DEPTH

1200'

## 20. ROTARY OR CABLE TOOLS

Rotary

## 21. ELEVATIONS (Show whether DF, RT, GR, etc.)

5340' GR

## 22. APPROX. DATE WORK WILL START\*

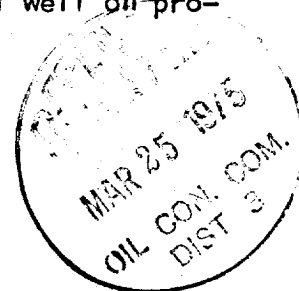
5-1-75

## 23.

## PROPOSED CASING AND CEMENTING PROGRAM

SIZE OF HOLE	SIZE OF CASING	WEIGHT PER FOOT	SETTING DEPTH	QUANTITY OF CEMENT
8-3/4"	7"	20#	50'	10 sx
6-1/4"	4-1/2"	10.5#	1200'	50 sx

Plan to drill well with air or minimum mud to test Gallup formation. If Gallup productive, plan to set 4-1/2" casing thru formation, selectively perforate, frac well, clean out well after frac, run 2-3/8" tubing, and put well on production.



IN ABOVE SPACE DESCRIBE PROPOSED PROGRAM: If proposal is to deepen or plug back, give data on present productive zone and proposed new productive zone. If proposal is to drill or deepen directionally, give pertinent data on subsurface locations and measured and true vertical depths. Give blowout preventer program, if any.

## 24.

Original signed by T. A. Dugan

SIGNED

Thomas A. Dugan

TITLE

Petroleum Engineer

DATE

3-20-75

(This space for Federal or State office use)

PERMIT NO.

APPROVAL DATE

APPROVED BY

TITLE

CONDITIONS OF APPROVAL, IF ANY:

MAR 24 1975

U. S. GEOLOGICAL SURVEY  
FARMINGTON, N. M.

\*See Instructions On Reverse Side

**NEW MEXICO OIL CONSERVATION COMMISSION  
WELL LOCATION AND ACREAGE DEDICATION PLAT**

Form C-102  
Supersedes C-128  
Effective 1-1-65

All distances must be from the outer boundaries of the Section.

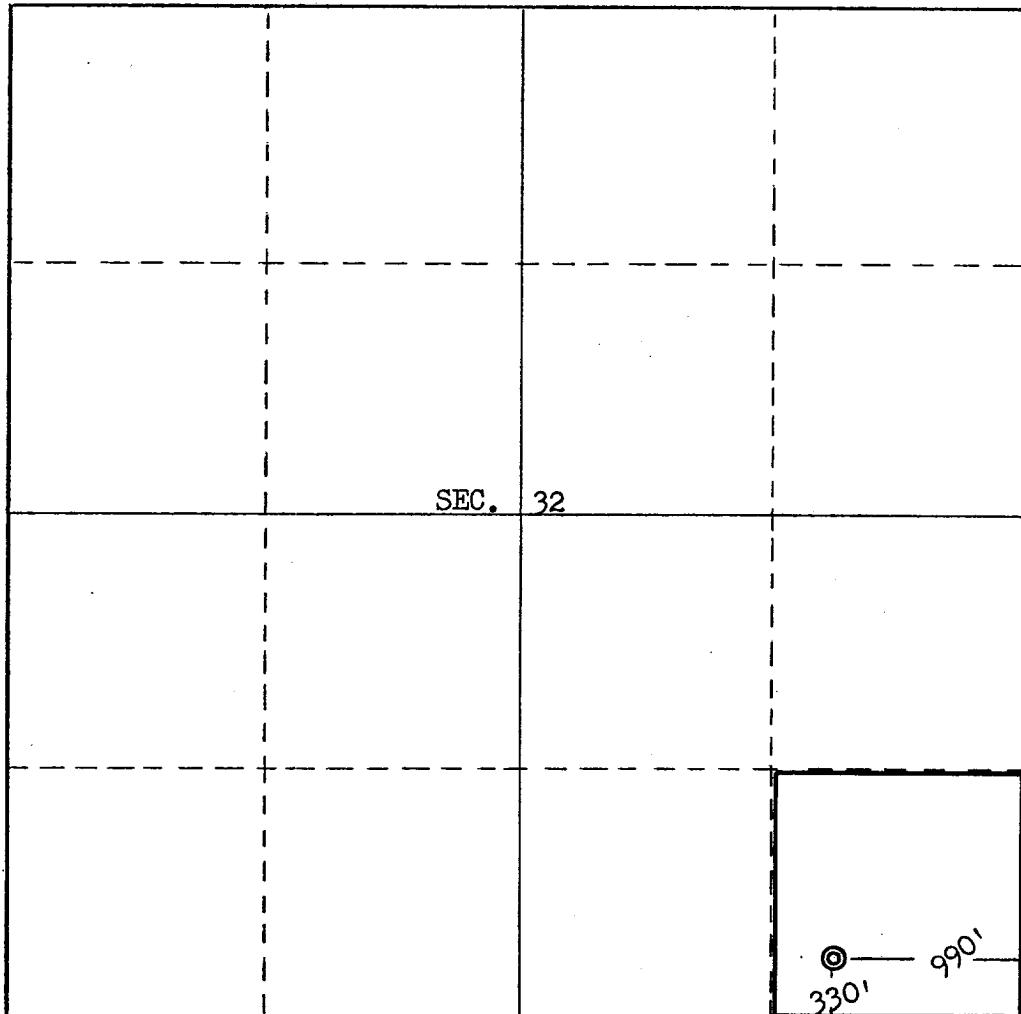
Operator <b>Dugan Production Corporation</b>			Lease <b>Horseshoe</b>		Well No. <b>6</b>
Unit Letter <b>P</b>	Section <b>32</b>	Township <b>32 North</b>	Range <b>17 West</b>	County <b>San Juan</b>	
Actual Footage Location of Well: <b>330</b> feet from the <b>South</b> line and <b>990</b> feet from the <b>East</b> line					
Ground Level Elev. <b>5340</b>	Producing Formation <b>Gallup</b>		Pool <b>Horseshoe 2 x T</b>	Dedicated Acreage: <b>40</b> Acres	

1. Outline the acreage dedicated to the subject well by colored pencil or hachure marks on the plat below.
2. If more than one lease is dedicated to the well, outline each and identify the ownership thereof (both as to working interest and royalty).
3. If more than one lease of different ownership is dedicated to the well, have the interests of all owners been consolidated by communitization, unitization, force-pooling, etc?

☐ Yes    ☐ No    If answer is "yes," type of consolidation \_\_\_\_\_

If answer is "no," list the owners and tract descriptions which have actually been consolidated. (Use reverse side of this form if necessary.) \_\_\_\_\_

No allowable will be assigned to the well until all interests have been consolidated (by communitization, unitization, forced-pooling, or otherwise) or until a non-standard unit, eliminating such interests, has been approved by the Commission.

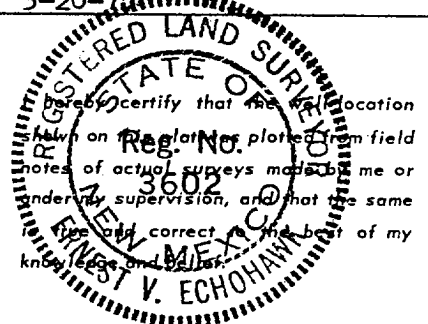


**CERTIFICATION**

*I hereby certify that the information contained herein is true and complete to the best of my knowledge and belief.*

Original signed by **T. A. Dugan**

Name <b>Thomas A. Dugan</b>
Position <b>Petroleum Engineer</b>
Company <b>Dugan Production Corp.</b>
Date <b>3-20-75</b>



Date Surveyed <b>March 12, 1975</b>
Registered Professional Engineer and/or Land Surveyor <i>E.V. Echohawk</i>
Certificate No. <b>3602</b> <b>E.V. Echohawk LS</b>

0 330 660 990 1320 1650 1980 2310 2640 2000 1500 1000 500 0