

UNITED STATES
DEPARTMENT OF THE INTERIOR
GEOLOGICAL SURVEY

30-045-22738

APPLICATION FOR PERMIT TO DRILL, DEEPEN, OR PLUG BACK

1a. TYPE OF WORK
DRILL ☒ DEEPEN ☐ PLUG BACK ☐

b. TYPE OF WELL
OIL WELL ☐ GAS WELL ☒ OTHER ☐ SINGLE ZONE ☐ MULTIPLE ZONE ☒

2. NAME OF OPERATOR
Enserch Exploration, Inc.

3. ADDRESS OF OPERATOR
Empire Central Bldg, Suite 800, 7701 N. Stemmons, Dallas, Tex.

4. LOCATION OF WELL (Report location clearly and in accordance with any State requirements.)* 75247
At surface
Unit letter G. 2180' FNL and 2300' FEL Sec. 30, T32N, R13W
At proposed prod. zone
Approx. the same

14. DISTANCE IN MILES AND DIRECTION FROM NEAREST TOWN OR POST OFFICE*
3-1/2 miles northwest of LaPlata, New Mexico

15. DISTANCE FROM PROPOSED*
LOCATION TO NEAREST
PROPERTY OR LEASE LINE, FT.
(Also to nearest drilg. unit line, if any) 1699.6

18. DISTANCE FROM PROPOSED LOCATION*
TO NEAREST WELL, DRILLING, COMPLETED,
OR APPLIED FOR, ON THIS LEASE, FT. None

16. NO. OF ACRES IN LEASE
501.35

19. PROPOSED DEPTH
10,000

17. NO. OF ACRES ASSIGNED
TO THIS WELL
501.35 501.44

20. ROTARY OR CABLE TOOLS
Rotary

21. ELEVATIONS (Show whether DF, RT, GR, etc.)
GR 6423'

22. APPROX. DATE WORK WILL START*
November 1, 1977

23. PROPOSED CASING AND CEMENTING PROGRAM

SIZE OF HOLE	SIZE OF CASING	WEIGHT PER FOOT	SETTING DEPTH	QUANTITY OF CEMENT
17-1/2"	10-3/4"	45.5	600'	500 sx
7-7/8"	5-1/2"	17.0	10,000'	500 sx

1. Surface formation is Cretaceous Cliff House
2. Estimated tops of geological markers are Ismay - 8400', Desert Creek - 8600', Barker Creek - 9100'.
3. Shallow fresh water sands are expected above 500'. Thin coal seams may be encountered in Mesa Verde Group from surface to 2800'. Potential oil and gas zones in Gallup (2800') and Dakota (3700').
4. See Section 23 above.

(CONTINUED ON ATTACHED)

IN ABOVE SPACE DESCRIBE PROPOSED PROGRAM: If proposal is to deepen or plug back, give data on present productive zone and proposed new productive zone. If proposal is to drill or deepen directionally, give pertinent data on subsurface locations and measured and true vertical depths. Give blowout preventer program, if any.

24. SIGNED Carl A. Edwards TITLE Regional Drilling Manager DATE Sept 8, 1977

(This space for Federal or State office use)

PERMIT NO. _____ APPROVAL DATE _____

APPROVED BY _____ TITLE _____ DATE _____

CONDITIONS OF APPROVAL, IF ANY:

Alkal

*See Instructions On Reverse Side

NEW MEXICO OIL CONSERVATION COMMISSION
WELL LOCATION AND ACREAGE DEDICATION PLAT

Form C-122
Supersedes C-128
Effective 1-1-65

All distances must be from the outer boundaries of the Section.

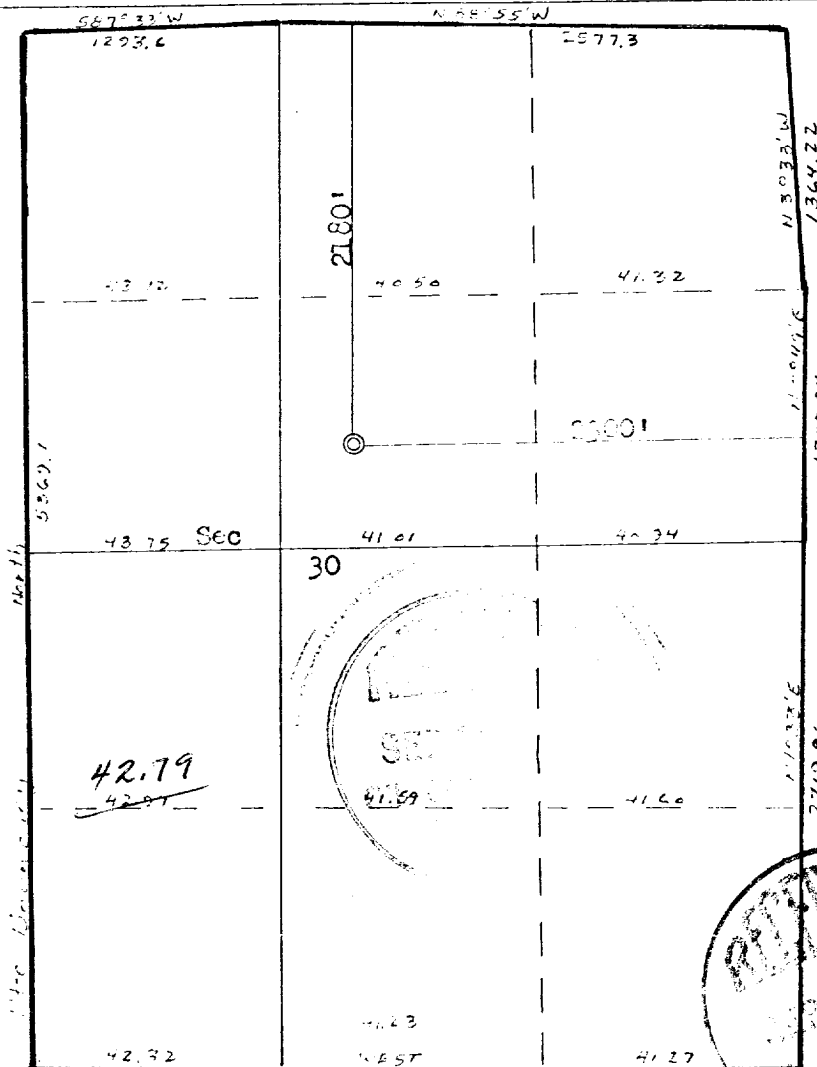
Operator Enserch Exploration Inc.		Lease Federal 1-30 (Penn)		Well No. 1
Tract Letter G	Section 30	Township 32N	Range 13W	County San Juan
Actual Footage Location of Well:				
2180	feet from the North	line and	2300	feet from the East line
Ground Level Elev: 6123	Producing Formation Ponderosa	Pool Ute Dome extension	Dedicated Acreage: 501.44 Acres	

- Outline the acreage dedicated to the subject well by colored pencil or hatchure marks on the plat below.
- If more than one lease is dedicated to the well, outline each and identify the ownership thereof (both as to working interest and royalty).
- If more than one lease of different ownership is dedicated to the well, have the interests of all owners been consolidated by communitization, unitization, force-pooling, etc?

☐ Yes ☐ No If answer is "yes," type of consolidation _____

If answer is "no," list the owners and tract descriptions which have actually been consolidated. (Use reverse side of this form if necessary.) _____

No allowable will be assigned to the well until all interests have been consolidated (by communitization, unitization, forced-pooling, or otherwise) or until a non-standard unit, eliminating such interests, has been approved by the Commission.



CERTIFICATION

I hereby certify that the information contained herein is true and complete to the best of my knowledge and belief.

Earl A. Edwards

Name
X **Earl A. Edwards**
Position
X **Regional Drilling Manager**
Company
X **Enserch Exploration, Inc.**
Date
X **September 19, 1977**

I hereby certify that the well location shown on this plat was plotted from field notes of actual surveys made by me or under my supervision, and that the same is true and correct to the best of my knowledge and belief.

Date Surveyed
August 22, 1977
Registered Professional Engineer and Land Surveyor
Fred B. Kern
Certificate No.
3950