

Submit 3 Copies
to Appropriate
District Office

DISTRICT I

P.O. Box 1980, Hobbs, NM 88240

DISTRICT II

P.O. Drawer DD, Artesia, NM 88210

DISTRICT III

1000 Rio Brazos Rd., Aztec, NM 87410

State of New Mexico
Energy, Minerals and Natural Resources Department

Form C-103
Revised 1-1-89

OIL CONSERVATION DIVISION

2040 South Pacheco Street

Santa Fe, New Mexico 87505-5475

WELL API NO.

30-045-23009

5. Indicate Type of Lease

STATE ☒ FEE ☐

6. State Oil & Gas Lease No.

7. Lease Name or Unit Agreement Name

PAN AM STATE

SUNDRY NOTICES AND REPORTS ON WELLS
(DO NOT USE THIS FORM FOR PROPOSALS TO DRILL OR TO DEEPEN OR PLUG BACK TO
A DIFFERENT RESERVOIR. USE "APPLICATION FOR PERMIT"
(FORM C-101) FOR SUCH PROPOSALS.)

1. Type of Well:

OIL ☐ GAS ☐
WELL ☐ WELL ☒ OTHER ☐

2. Name of Operator

CORDILLERA ENERGY, INC.

3. Address of Operator

5802 HIGHWAY 64, FARMINGTON, NEW MEXICO 87401

8. Well No.

1A

9. Pool name or Wildcat

BLANCO MESA VERDE

4. Well Location

Unit Letter E : 790 Feet From The WEST Line and 1450 Feet From The NORTH Line

Section 36 Township 32N Range 13W NMPM County SJ

10. Elevation (Show whether DF, RKB, RT, Gr, etc.)

11. Check Appropriate Box to Indicate Nature of Notice, Report, or Other Data

NOTICE OF INTENTION TO:

PERFORM REMEDIAL WORK ☐ PLUG AND ABANDON ☒
TEMPORARILY ABANDON ☐ CHANGE PLANS ☐
PULL OR ALTER CASING ☐
OTHER: ☐

SUBSEQUENT REPORT OF:

REMEDIAL WORK ☐ ALTERING CASING ☐
COMMENCE DRILLING OPNS. ☐ PLUG & ABANDONMENT ☐
CASING TEST AND CEMENT JOB ☐
OTHER: ☐

12. Describe Proposed or Completed Operations (Clearly state all pertinent details, and give pertinent dates, including estimated date of starting any proposed work) SEE RULE 1103

It is our intention to plug and abandon the above referenced well ASAP in accordance with attached plug and abandonment procedure.

I hereby certify that the information above is true and complete to the best of my knowledge and belief.

SIGNATURE Kay S. Eckstein TITLE PRODUCTION TECHNICIAN DATE 01/28/02

TYPE OR PRINT NAME KAY S. ECKSTEIN TELEPHONE NO. (505) 632-8056

(This space for State Use)

APPROVED BY _____ DATE JAN 30 2002

CONDITIONS OF APPROVAL, IF ANY:

PLUG & ABANDONMENT PROCEDURE

1/25/02

Pan Am State #1A

Blanco Mesaverde

790' FWL, 1450' FNL, NW Section 36, T-32-N, R-13-W

San Juan Co., New Mexico

Note: All cement volumes use 100% excess outside pipe and 50' excess inside pipe. The stabilizing wellbore fluid will be 8.3 ppg, sufficient to balance all exposed formation pressures. All cement will be ASMA Type II mixed at 15.6 ppg with a yield of 1.18 cf/sx.

1. Install and test location rig anchors. Prepare blow pit. Comply with all NMOCD, BLM, and Cordillera safety regulations. MOL and RU daylight pulling unit. Conduct safety meeting for all personnel on location. NU relief line. Blow down well and kill with water as necessary. ND wellhead and NU BOP. Test BOP.
2. Tally and prepare a 2-3/8" tubing workstring.
3. **Plug #1 (Pictured Cliffs and Fruitland tops, 2167' – 1500')**: TIH with 4-1/2" cement retainer and set at 2000'. Pressure test tubing to 1000#. Load casing with water and circulate clean. Pressure test casing to 500#. If casing does not test, then spot or tag subsequent plug as appropriate. Mix and pump 100 sxs cement, squeeze 46 sxs outside the casing to fill from 2167' to 2050' and spot 54 sxs inside the casing up to 1500' to cover the Pictured Cliffs and Fruitland tops. TOH and LD tubing.
4. **Plug #2 (Ojo Alamo top and surface, 502' - Surface)**: Perforate 4 squeeze holes at 502'. Establish circulation out bradenhead valve. Mix approximately 115 sxs cement to circulate cement out the bradenhead valve, then shut in casing and connect pump line to bradenhead and pump another 50 sxs into the bradenhead (total of 165 sxs), shut in and WOC overnight.
5. ND BOP and cut off wellhead below surface casing flange. Install P&A marker with cement to comply with regulations. RD, MOL and cut off anchors. Restore location per BLM stipulations.

Pan Am State #1A

Proposed P&A

Blanco Mesaverde

1450' FNL & 790' FWL

NW, Section 36, T-32-N, R-13-W, San Juan County, NM

Today's Date: 1/25/02

Spud: 7/3/78

Completed: 8/31/78

12-1/4" hole

8-5/8" 24#, Csg set @ 257'
Cmt w/200 sxs (Circulated to Surface)

Plug #2 502' - Surface
Cmt with 150 sxs Class B

Ojo Alamo @ 452'

Perforate @
502'

Casing leaks at 1583'
Sqzd with 300 sxs (Jan 00)

Casing leak at 1874'
Sqzd with 350 sxs (Jan 00)

Fruitland @ 2000'

Set CR at 2000'

CBL after Jan 00 Squeezes
TOC at 1830' and good bond
down to 2050'

Pictured Cliffs @ 2117'

COTD 2165'

Casing tight at 2135'

TOC @ 2990' ('78 CBL)

Sand fill from frac job

Mesaverde @ 3737'

Mesaverde Perforations:
4102' - 4400'

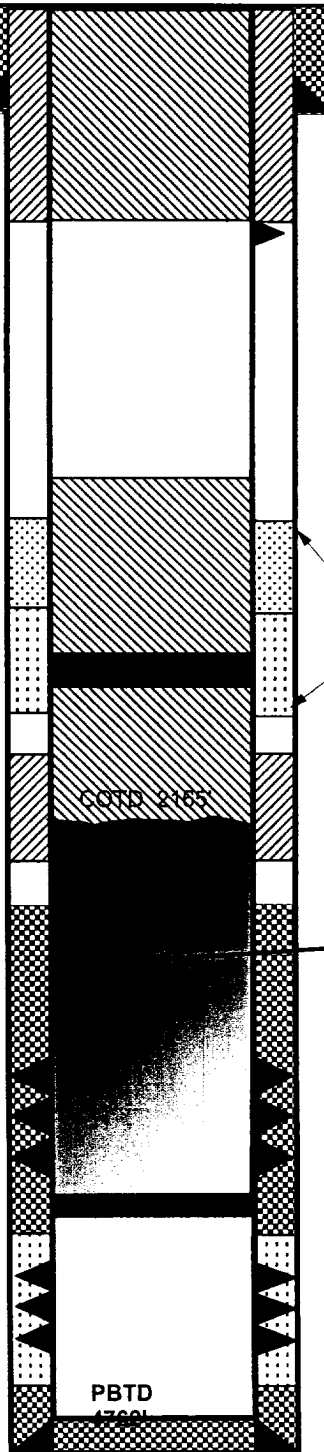
RBP @ 4420' (Jan 00)

Mesaverde Perforations shot by mistake: 4425' -
4748'. Patched and squeezed with 300 sxs cmt.

4-1/2" 10.5#, K55 Casing set @ 4798'
Cement with 545 sxs

7-7/8" hole

TD
4798'



Pan Am State #1A

Current

Blanco Mesaverde

1450' FNL & 790'FWL

NW, Section 36, T-32-N, R-13-W, San Juan County, NM

Today's Date: 1/25/02

Spud: 7/3/78

Completed: 8/31/78

12-1/4" hole

8-5/8" 24#, Csg set @ 257'

Cmt w/200 sxs (Circulated to Surface)

Well History

May '99: Tubing change out. Change out tubing from 1-1/2" to 2/38" yellow band.

May '99: Swab. Make 19 runs, recovered 11 bbls.

Jan '00: Planned Pay Add in Menefee. Set RBP at 4065'; PT casing to 2500#; perforate Menefee zone 4102' to 4400' and acidize; fraced well, screened out; tagged fill at 1600'; cleaned out to 2040'; lost circulation; isolate upper casing leak at 1583' and squeezed with 300 sxs; drill out to 1900'; clean out to 2170'; casing tight - collapsed ?? at 2043'; circulating coal chunks and cement; tight at 2081' work through 2170'; set packer at 1874' and squeeze with 350 sxs; drill cement from 1925' to 2137'; mill out to 2165'; decide to P&A well; ran CBL from 2100', TOC at 1830'; casing tight at 2135'.

Ojo Alamo @ 452'

Casing leaks at 1583'
Sqzd with 300 sxs (Jan 00)

Casing leak at 1874'
Sqzd with 350 sxs (Jan 00)

CBL after Jan 00 Squeezes
TOC at 1830' and good bond
down to 2050'

Fruitland @ 2000'

Pictured Cliffs @ 2117'

COTD 2165'

Casing tight at
2135'

TOC @ 2990' ('78 CBL)

Sand fill from frac job

Mesaverde @ 3737'

Mesaverde Perforations:
4102' - 4400'

RBP @ 4420' (Jan 00)

Mesaverde Perforations shot by mistake: 4425' -
4748'. Patched and squeezed with 300 sxs cmt.

4-1/2" 10.5#, K55 Casing set @ 4798'
Cement with 545 sxs

7-7/8" hole

PBTD

1798'

TD
4798'