

UNITED STATES
DEPARTMENT OF THE INTERIOR
GEOLOGICAL SURVEY

30-045-23779

5. LEASE DESIGNATION AND SERIAL NO.

NM-019414

6. IF INDIAN, ALLOTTEE OR TRIBE NAME

7. UNIT AGREEMENT NAME

8. FARM OR LEASE NAME

Stanolind Gas Com "C"

9. WELL NO.

1

10. FIELD AND POOL, OR WILDCAT

Blanco Mesaverde Basin Dak

11. SEC., T., E., M., OR BLE.
AND SURVEY OR AREANW/4 SE/4, Section 17,
T32N, R12W

12. COUNTY OR PARISH 13. STATE

San Juan

New Mexico

1a. TYPE OF WORK

DRILL ☒DEEPEN ☐PLUG BACK ☐

b. TYPE OF WELL

OIL
WELL ☐GAS
WELL ☒

OTHER

SINGLE
ZONE ☐MULTIPLE
ZONE ☒

2. NAME OF OPERATOR

AMOCO PRODUCTION COMPANY

3. ADDRESS OF OPERATOR

501 Airport Drive, Farmington, New Mexico 87401

4. LOCATION OF WELL (Report location clearly and in accordance with any State requirements.)*

At surface

1820' FSL and 1590' FEL, Section 17, T32N, R12W

At proposed prod. zone

Same

14. DISTANCE IN MILES AND DIRECTION FROM NEAREST TOWN OR POST OFFICE*

15.5 miles northwest of Aztec, New Mexico

15. DISTANCE FROM PROPOSED*

LOCATION TO NEAREST
PROPERTY OR LEASE LINE, FT.
(Also to nearest drlg. unit line, if any)

1590'

16. NO. OF ACRES IN LEASE

302.63

17. NO. OF ACRES ASSIGNED
TO THIS WELL

S/ 320

18. DISTANCE FROM PROPOSED LOCATION*
TO NEAREST WELL, DRILLING, COMPLETED,
OR APPLIED FOR, ON THIS LEASE, FT.

NONE

19. PROPOSED DEPTH

7269'

20. ROTARY OR CABLE TOOLS

Rotary

21. ELEVATIONS (Show whether DF, RT, GR, etc.)

6023' GL

22. APPROX. DATE WORK WILL START*

As soon as permitted

23.

PROPOSED CASING AND CEMENTING PROGRAM

SIZE OF HOLE	SIZE OF CASING	WEIGHT PER FOOT	SETTING DEPTH	QUANTITY OF CEMENT
17-1/2"	13-3/8" (NEW)	48 #	350'	620 sx. Class "B" Neat
12-1/4"	9-5/8" (NEW)	32.3 #	2382'	775 sx. Class "B" 50:50 Poz
8-3/4"	7 " (NEW)	23 #	7269'	895 sx. Class "B" 50:50 Poz

The above well is being drilled to further develop the Blanco Mesaverde and Basin Dakota formations. The gas from this acreage is not dedicated to a purchaser.

RECEIVED

SEP 04 1979

U. S. GEOLOGICAL SURVEY

IN ABOVE SPACE DESCRIBE PROPOSED PROGRAM: If proposal is to deepen or plug back, give data on present productive zone and proposed new productive zone. If proposal is to drill or deepen directionally, give pertinent data on subsurface locations and measured and true vertical depths. Give blowout preventer program, if any.

24.

SIGNED

B. E. Zachary

TITLE

District Engineer

DATE

August 29, 1979

(This space for Federal or State office use)

PERMIT NO.

APPROVAL DATE

APPROVED BY

TITLE

DATE

CONDITIONS OF APPROVAL, IF ANY:

ak Frank

*See Instructions On Reverse Side

OIL CONSERVATION DIVISION

P. O. BOX 2088

SANTA FE, NEW MEXICO 87501

Form C-102
Revised 10-1-78

STATE OF NEW MEXICO

ENERGY AND MINERALS DEPARTMENT

All distances must be from the outer boundaries of the Section.

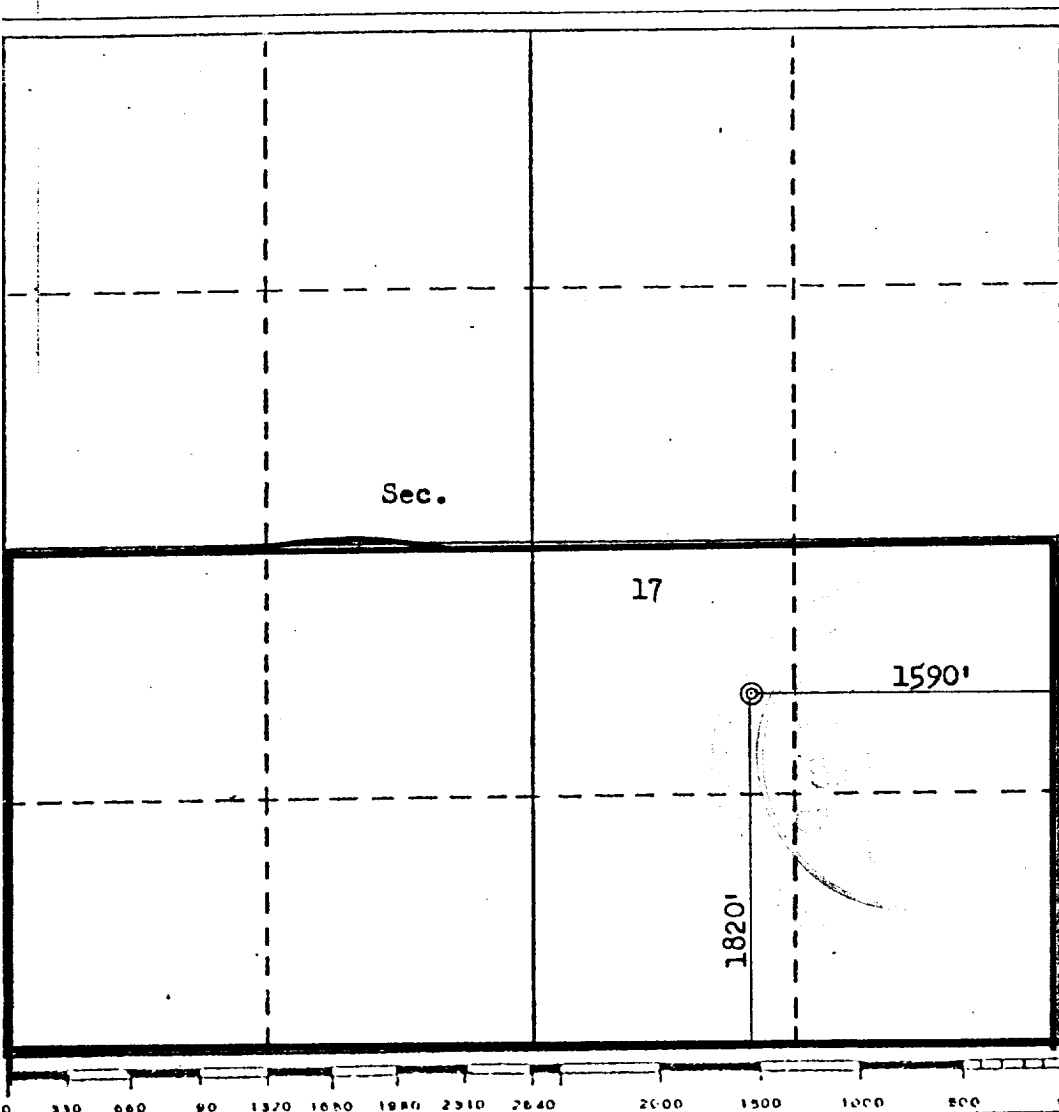
Operator AMOCO PRODUCTION COMPANY			Lease STANOLIND GAS COM "C"		Well No. 1
Unit Letter J	Section 17	Township 32N	Range 12W	County San Juan	
Actual Footage Location of Well: 1820 feet from the South line and 1590 feet from the East line					
Ground Level Elev. 6023	Producing Formation Mesaverde & Dakota		Pool Blanco Mesaverde Basin Dakota		Dedicated Acreage: 320 Acres

1. Outline the acreage dedicated to the subject well by colored pencil or hachure marks on the plat below.
2. If more than one lease is dedicated to the well, outline each and identify the ownership thereof (both as to working interest and royalty).
3. If more than one lease of different ownership is dedicated to the well, have the interests of all owners been consolidated by communitization, unitization, force-pooling, etc?

☒ Yes ☐ No If answer is "yes," type of consolidation Communitized

If answer is "no," list the owners and tract descriptions which have actually been consolidated. (Use reverse side of this form if necessary.)

No allowable will be assigned to the well until all interests have been consolidated (by communitization, unitization, forced-pooling, or otherwise) or until a non-standard unit, eliminating such interests, has been approved by the Division.



CERTIFICATION

I hereby certify that the information contained herein is true and complete to the best of my knowledge and belief.

B. E. Fackrell

Name
B. E. FACKRELL

Position
DISTRICT ENGINEER

Company
AMOCO PRODUCTION COMPANY

Date
JULY 7, 1979

I hereby certify that the well location shown on this plat was plotted from field notes of actual surveys made by me or under my supervision, and that the same is true and correct to the best of my knowledge and belief.

Date Surveyed

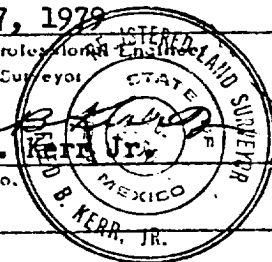
June 27, 1979

Registered Professional Engineer
and/or Land Surveyor

Fred B. Kerr Jr.
Fred B. Kerr Jr.

Certificate No.

3950



SUPPLEMENTAL INFORMATION TO FORM 9-331C
STANOLIND GAS COM "C" NO. 1
1820' FSL & 1590' FEL, SECTION 17, T32N, R12W
SAN JUAN COUNTY, NEW MEXICO

The geologic name of the surface formation is the Tertiary Nacimiento.

Estimated tops of important potential hydrocarbon bearing formations:

<u>FORMATION</u>	<u>DEPTH</u>	<u>ELEVATION</u>
Kirtland	1180'	+ 4856'
Pictured Cliffs	1982'	+ 4054'
Cliffhouse	4070'	+ 1966'
Point Lookout	4713'	+ 1323'
Greenhorn	6957'	- 921'
Graneros	7078'	- 1042'
Dakota	7169'	- 1133'
TD	7269'	- 1233'

Estimated KB elevation: 6036'.

The well will be drilled to the surface casing point using native mud. The well will then be drilled to the intermediate casing point with a low solids non-dispersed mud system and to TD with air. Open hole logging program will include logs from TD to below surface casing as follows:

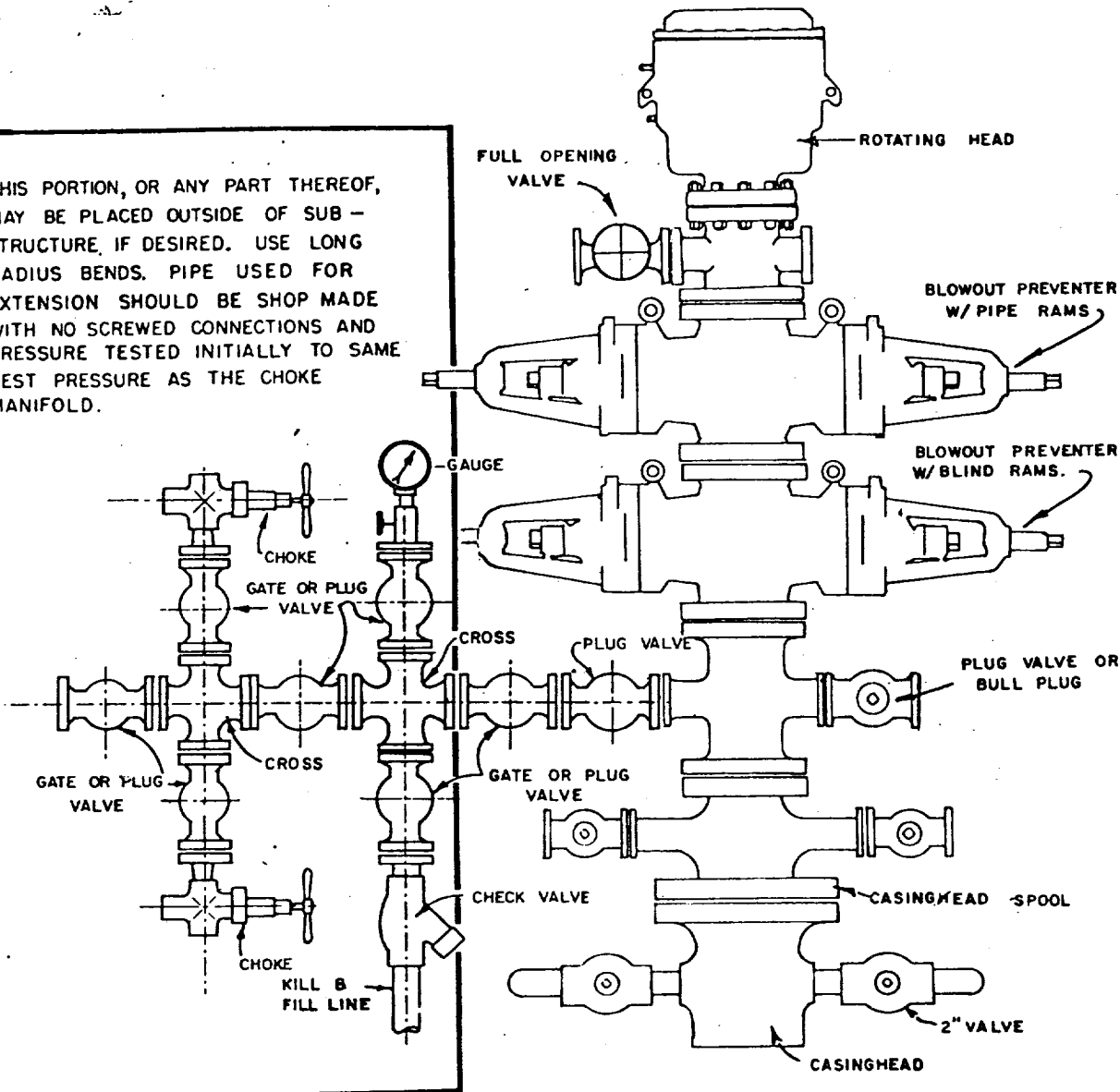
Induction Electric - SP - Gamma Ray	Base surface csg - 2382'
FDC - CNL - Gamma Ray	Base surface csg - 2382'
Gamma Ray	Surface - 2000'
Induction Electric - Gamma Ray	2382' - TD
FDC - SNP - Gamma Ray	2382' - TD

Completion design will be based on these logs. No cores or drill stem tests will be taken.

Operations will commence when permitted and last approximately three weeks.

Amoco's standard blowout prevention will be employed (see attached drawing).

THIS PORTION, OR ANY PART THEREOF, MAY BE PLACED OUTSIDE OF SUB-STRUCTURE, IF DESIRED. USE LONG RADIUS BENDS. PIPE USED FOR EXTENSION SHOULD BE SHOP MADE WITH NO SCREWED CONNECTIONS AND PRESSURE TESTED INITIALLY TO SAME TEST PRESSURE AS THE CHOKE MANIFOLD.



BLOWOUT PREVENTER HOOKUP

MULTI-POINT SURFACE USE PLAN

STANOLIND GAS COM "C" NO. 1
1820' FSL & 1590' FEL, SECTION 17, T32N, R12W
SAN JUAN COUNTY, NEW MEXICO

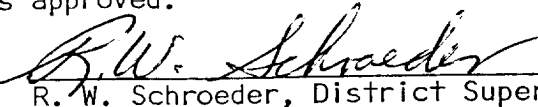
1. The attached topographic map shows the proposed route to the location.
2. It will be necessary to blade 600 feet of road on level ground.
3. Existing oil and gas wells within a one-mile radius of our proposed well have been spotted on the vicinity map.
4. There are facilities at nearby wells which are spotted on the vicinity map.
5. Water will be hauled from the La Plata River a distance of 9 miles.
6. No construction materials will be hauled in for this location.
7. A 150' by 150' pit will be built on location to hold all drilling waste. Upon completion of the well, the pit will be fenced and fluids allowed to dry out.
8. There are neither airstrips nor camps in the vicinity.
9. The well site layout, reserve, burn and trash pits are shown on the attached Drill Site Specification Sheet. A 2-foot cut will be made on north side.
10. Restoration of the surface will be accomplished by cleaning up and leveling upon completion of the well. Drilling mud will be hauled away and the reserve pit back filled. Reseeding of the site will be carried out as instructed by the Bureau of Land Management.
11. The general topography is a level terrain with sandy clayey loam-type soil. vegetation consists of native grasses and no trees.

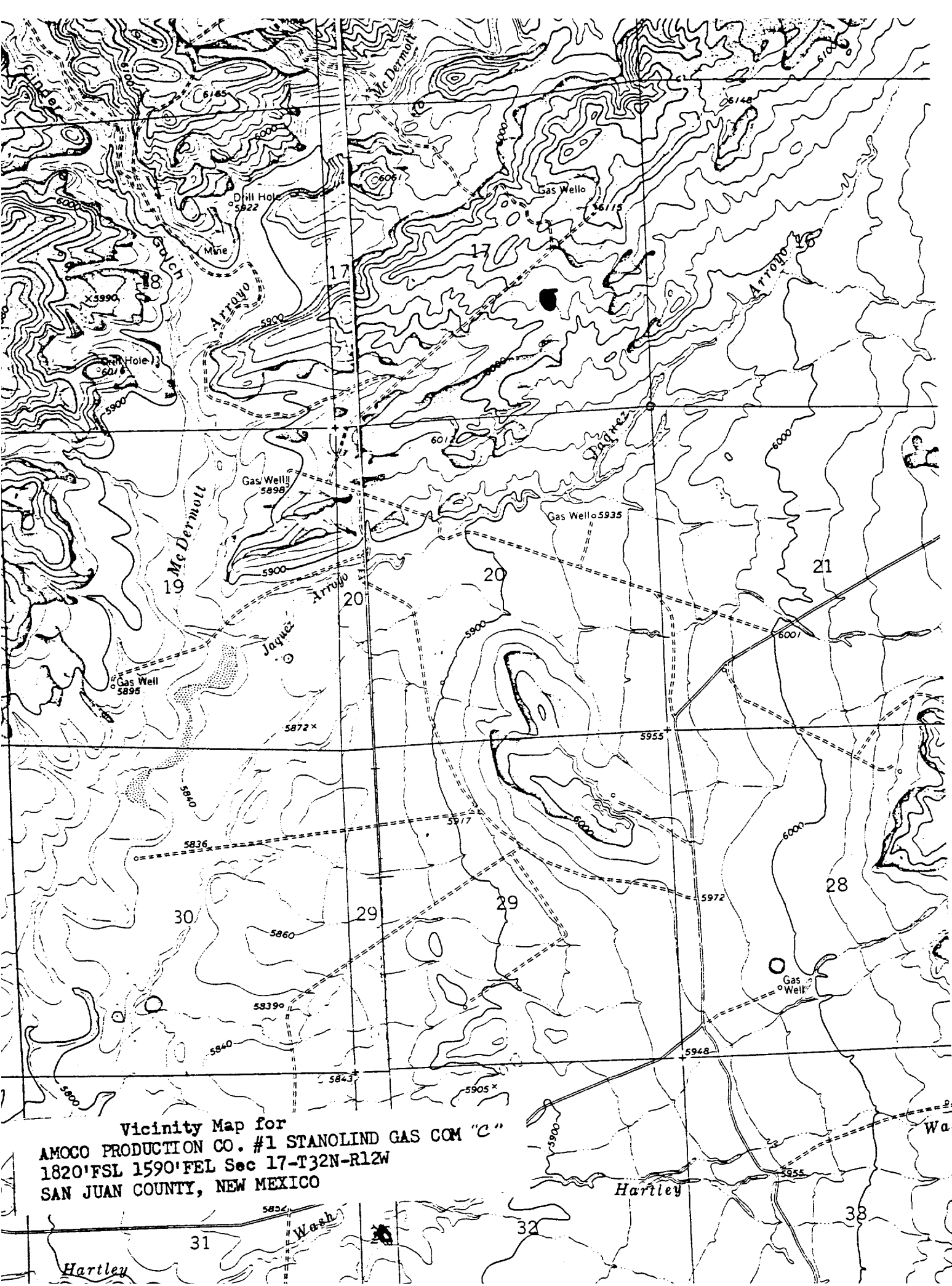
Representatives of the U. S. Geological Survey's Farmington Office and the Bureau of Land Management Office will inspect the site with Amoco personnel. Cultural resources inspection will be conducted by an archaeologist from San Juan College.

12. Operator's Representative: R. W. Schroeder
Phone: Office: 505-325-8841; Home: 505-325-6164
Address: 501 Airport Drive, Farmington, NM 87401

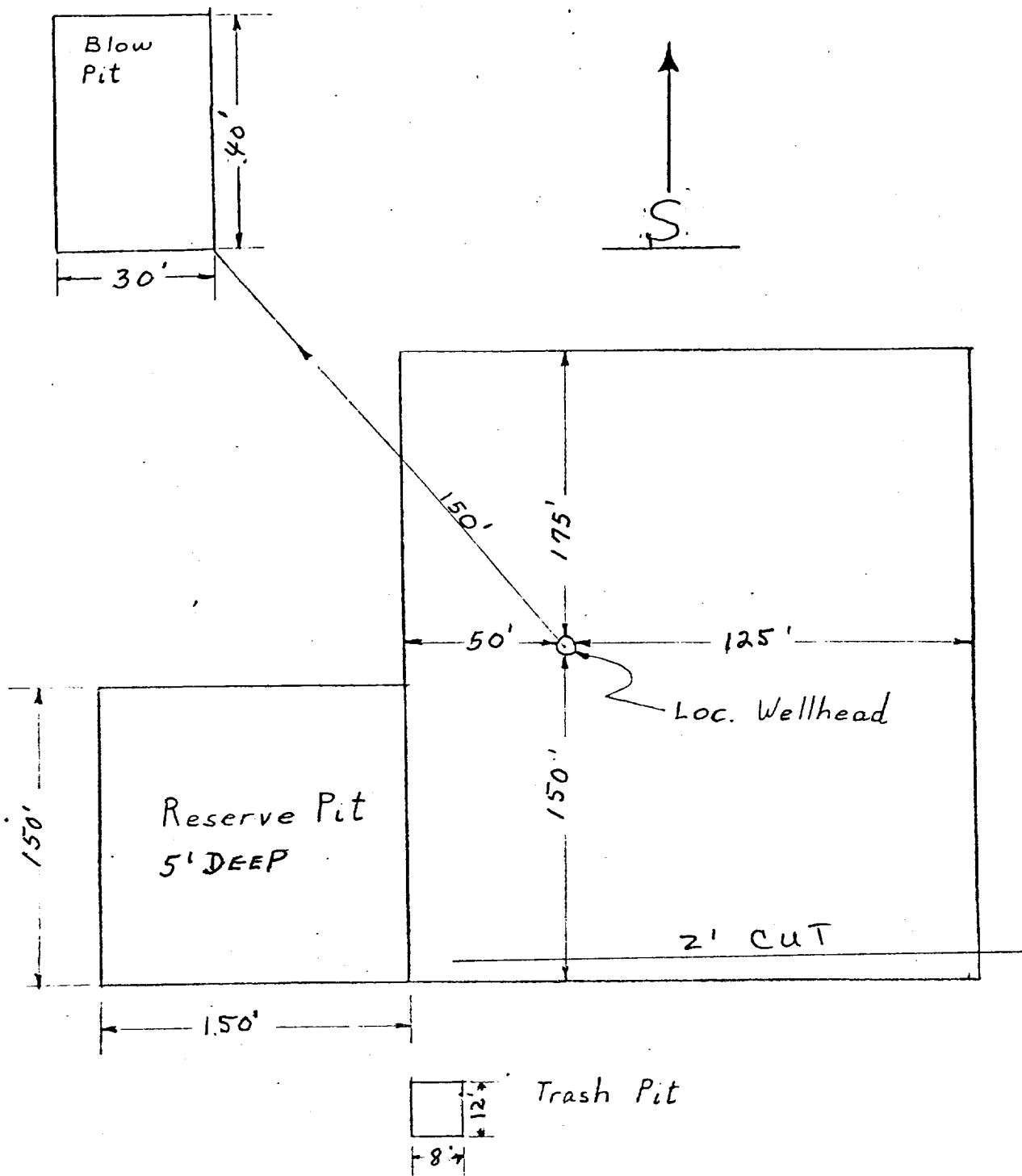
Certification: I hereby certify that I, or persons under my direct supervision, have inspected the proposed drillsite and access route, that I am familiar with the conditions which presently exist; that the statements made in this plan are, to the best of my knowledge, true and correct; and, that the work associated with the operations proposed herein will be performed by AMOCO PRODUCTION COMPANY and its contractors and sub-contractors in conformity with this plan and the terms and conditions under which it is approved.

Date August 16, 1979


R. W. Schroeder, District Superintendent



Vicinity Map for
AMOCO PRODUCTION CO. #1 STANOLIND GAS COM "C"
1820' FSL 1590' FEL Sec 17-T32N-R12W
SAN JUAN COUNTY, NEW MEXICO



APPROXIMATELY 1.2 Acres

Amoco Production Company

SCALE: NONE

DRILLING LOCATION SPECS
STANOLIND GAS COM "C" NO. 1

DRG.
NO.