

District I
PO Box 1980, Hobbs, NM 88241-1980

District II
811 South First, Artesia, NM 88210

District III
1000 Rio Brazos Rd., Aztec, NM 87410

District IV
2040 South Pacheco, Santa Fe, NM 87505

State of New Mexico
Energy, Minerals & Natural Resources Department

OIL CONSERVATION DIVISION
2040 South Pacheco
Santa Fe, NM 87505

Form C-102
Revised October 18, 1994
Instructions on back
Submit to Appropriate District Office
State Lease - 4 Copies
Fee Lease - 3 Copies

☐ AMENDED REPORT

WELL LOCATION AND ACREAGE DEDICATION PLAT

¹ API Number 3004524149	² Pool Code 71629	³ Pool Name Basin Fruitland Coal
⁴ Property Code 001062	⁵ Property Name Stanolind Gas Com. B	⁶ Well Number 1
⁷ OGRID No. 000778	⁸ Operator Name Amoco Production Company	⁹ Elevation

¹⁰ Surface Location

UL or lot no. I	Section 9	Township 32N	Range 12W	Lot Idn	Feet from the 1390	North/South line South	Feet from the 890	East/West line East	County San Juan
--------------------	--------------	-----------------	--------------	---------	-----------------------	---------------------------	----------------------	------------------------	--------------------

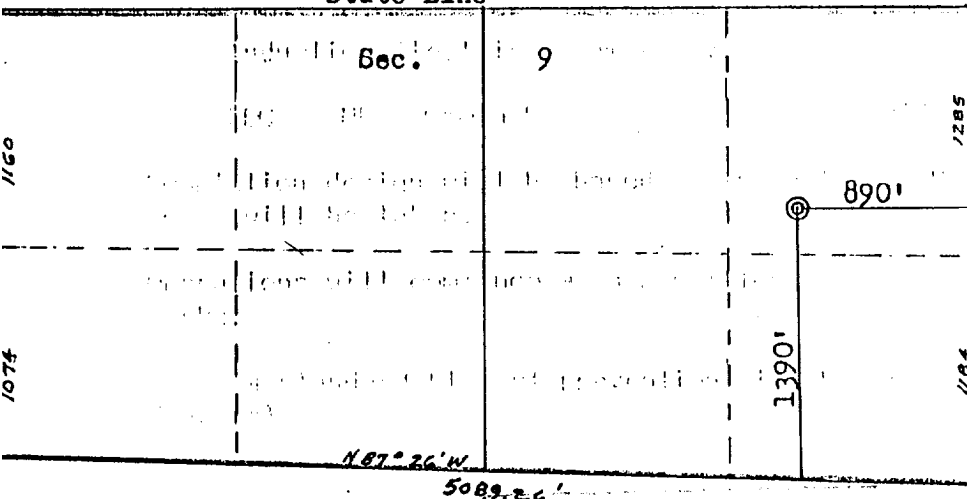
¹¹ Bottom Hole Location If Different From Surface

UL or lot no.	Section	Township	Range	Lot Idn	Feet from the	North/South line	Feet from the	East/West line	County
---------------	---------	----------	-------	---------	---------------	------------------	---------------	----------------	--------

¹² Dedicated Acres 280.38	¹³ Joint or Infill	¹⁴ Consolidation Code	¹⁵ Order No.
---	-------------------------------	----------------------------------	-------------------------

NO ALLOWABLE WILL BE ASSIGNED TO THIS COMPLETION UNTIL ALL INTERESTS HAVE BEEN CONSOLIDATED
OR A NON-STANDARD UNIT HAS BEEN APPROVED BY THE DIVISION

State Line



¹⁷ OPERATOR CERTIFICATION

I hereby certify that the information contained herein is true and complete to the best of my knowledge and belief

Gail M. Jefferson
Signature
Gail M. Jefferson
Printed Name
Business Assistant
Title
03-17-1995
Date

¹⁸ SURVEYOR CERTIFICATION

I hereby certify that the well location shown on this plat was plotted from field notes of actual surveys made by me or under my supervision, and that the same is true and correct to the best of my belief.

7/5/79

Date of Survey
Signature and Seal of Professional Surveyer:

3950

Certificate Number

RECEIVED
MAR 22 1995

OIL CON. DIV.
DIST. 3