

UNITED STATES
DEPARTMENT OF THE INTERIOR
GEOLOGICAL SURVEY

30-045-24924
5. LEASE DESIGNATION AND SERIAL NO.

SF 078146

6. IF INDIAN, ALLOTTEE OR TRIBE NAME

7. UNIT AGREEMENT NAME

8. FARM OR LEASE NAME

Newberry B

9. WELL NO.

1E

10. FIELD AND POOL, OR WILDCAT

Basin Dakota

11. SEC., T., R., M., OR BLK.
AND SURVEY OR AREA

Sec. 35, T32N, R12W

12. COUNTY OR PARISH 13. STATE

San Juan

N.M.

APPLICATION FOR PERMIT TO DRILL, DEEPEN, OR PLUG BACK

1a. TYPE OF WORK

DRILL ☒

DEEPEN ☐

PLUG BACK ☐

b. TYPE OF WELL

OIL
WELL ☐

GAS
WELL ☒

OTHER

SINGLE
ZONE ☒

MULTIPLE
ZONE ☐

2. NAME OF OPERATOR

Tenneco Oil Company

3. ADDRESS OF OPERATOR

P.O. Box 3249, Englewood, Colorado 80155

4. LOCATION OF WELL (Report location clearly and in accordance with any State requirements.)*

At surface

730 FSL, 1190 FWL

At proposed prod. zone

same as above

14. DISTANCE IN MILES AND DIRECTION FROM NEAREST TOWN OR POST OFFICE*

Approximately 7 miles East of LaPlata, N.M.

10. DISTANCE FROM PROPOSED*

LOCATION TO NEAREST
PROPERTY OR LEASE LINE, FT.
(Also to nearest drlg. unit line, if any)

730'

16. NO. OF ACRES IN LEASE

2240

17. NO. OF ACRES ASSIGNED
TO THIS WELL

W/320

18. DISTANCE FROM PROPOSED LOCATION*
TO NEAREST WELL, DRILLING, COMPLETED,
OR APPLIED FOR, ON THIS LEASE, FT.

19. PROPOSED DEPTH

±7635'

20. ROTARY OR CABLE TOOLS

Rotary

21. ELEVATIONS (Show whether DF, RT, GR, etc.)

6415' GR

22. APPROX. DATE WORK WILL START*

April 1981

23.

PROPOSED CASING AND CEMENTING PROGRAM

SIZE OF HOLE	SIZE OF CASING	WEIGHT PER FOOT	SETTING DEPTH	QUANTITY OF CEMENT
12 1/4"	9 5/8" new	36#	±250'	Circulate to surface
8 3/4"	7" new	23#	±3505'	Circulate to surface
6 1/4"	4 1/2" new	10.5#, 11.6#	±7635'	Circulate to liner top

This action is subject to administrative
appeal pursuant to 30 CFR 230.

See attached.
"GENERAL REQUIREMENTS"

The gas is dedicated.



IN ABOVE SPACE DESCRIBE PROPOSED PROGRAM: If proposal is to deepen or plug back, give data on present productive zone and proposed new productive zone. If proposal is to drill or deepen directionally, give pertinent data on subsurface locations and measured and true vertical depths. Give blowout preventer program, if any.

24.

SIGNED R. A. Mishler R. A. Mishler

TITLE Sr. Production Analyst

DATE January 27, 1981

(This space for Federal or State office use)

PERMIT NO.

APPROVED

AS ATTENDED

APPROVAL DATE

APPROVED BY

CONDITIONS OF APPROVAL

TITLE

DATE

JAMES P. SIMS
DISTRICT ENGINEER

*See Instructions On Reverse Side

Hold for NSL
for NSL
muntig
eak 3-

OIL CONSERVATION DIVISION

P. O. BOX 2088

SANTA FE, NEW MEXICO 87501

Form C-107
Revised 10-1-78

STATE OF NEW MEXICO

ENERGY AND MINERALS DEPARTMENT

All distances must be from the outer boundaries of the Section.

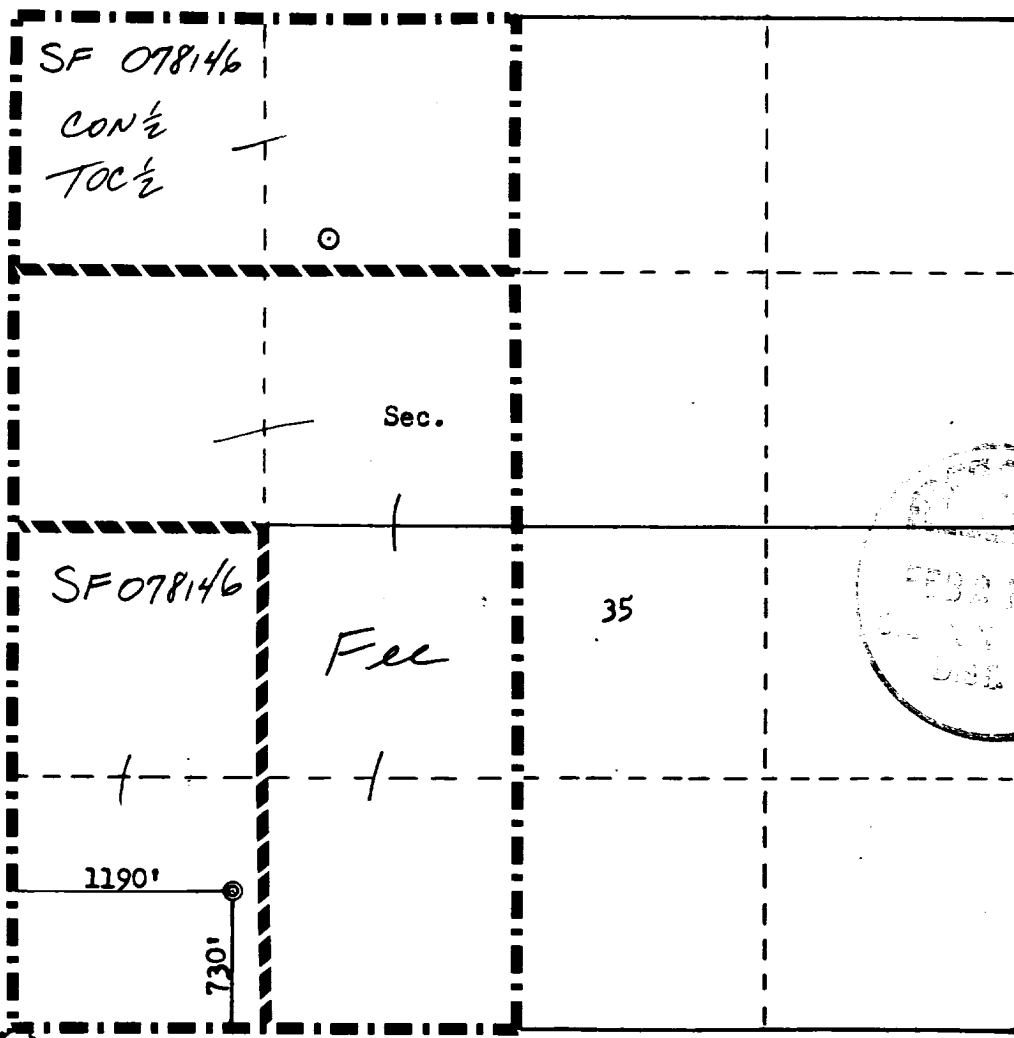
Operator TENNECO OIL COMPANY			Lease NEWBERRY B		Well No. 1E
Unit Letter M	Section 35	Township 32N	Range 12W	County San Juan	
Actual Footage Location of Well: 730 feet from the South line and 1190 feet from the West line					
Ground Level Elev. 6115	Producing Formation Dakota		Pool Basin Dakota		Dedicated Acreage: 320 Acres

1. Outline the acreage dedicated to the subject well by colored pencil or hatchure marks on the plat below.
2. If more than one lease is dedicated to the well, outline each and identify the ownership thereof (both as to working interest and royalty).
3. If more than one lease of different ownership is dedicated to the well, have the interests of all owners been consolidated by communitization, unitization, force-pooling, etc?

☒ Yes ☐ No If answer is "yes," type of consolidation COMMUNITIZATION IN PROGRESS

If answer is "no," list the owners and tract descriptions which have actually been consolidated. (Use reverse side of this form if necessary.) _____

No allowable will be assigned to the well until all interests have been consolidated (by communitization, unitization, forced-pooling, or otherwise) or until a non-standard unit, eliminating such interests, has been approved by the Commission.



CERTIFICATION

I hereby certify that the information contained herein is true and complete to the best of my knowledge and belief.

R. A. Mishler

Name

R. A. Mishler

Position

Sr. Production Analyst

Company

Tenneco Oil Company

Date

January 27, 1981

I hereby certify that the well location shown on this plat was plotted from field notes of actual surveys made by me or under my supervision, and that the same is true and correct to the best of my knowledge and belief.

Date Surveyed

December 3, 1980

Registered Professional Engineer

and Land Surveyor

Fred B. Herr Jr.

Fred B. Herr Jr.

State No. 1950

REGISTERED LAND SURVEYOR

