

30-045-25008

NO. OF COPIES RECEIVED	
DISTRIBUTION	
SANTA FE	
FILE	
U.S.G.S.	
LAND OFFICE	
OPERATOR	

NEW MEXICO OIL CONSERVATION COMMISSION

Form C-101  
Revised 1-1-65

5A. Indicate Type of Lease	
STATE <input checked="" type="checkbox"/>	FEE <input type="checkbox"/>
5. State Oil & Gas Lease No.	

APPLICATION FOR PERMIT TO DRILL, DEEPEN, OR PLUG BACK

1a. Type of Work		7. Unit Agreement Name	
b. Type of Well DRILL <input checked="" type="checkbox"/> DEEPEN <input type="checkbox"/> PLUG BACK <input type="checkbox"/> OIL WELL <input type="checkbox"/> GAS WELL <input checked="" type="checkbox"/> OTHER <input type="checkbox"/> SINGLE ZONE <input checked="" type="checkbox"/> MULTIPLE ZONE <input type="checkbox"/>		8. Farm or Lease Name Day State	
2. Name of Operator Southland Royalty Company		9. Well No. 2-E	
3. Address of Operator P.O. Drawer 570, Farmington, New Mexico 87401		10. Field and Pool, or Wildcat Basin Dakota	
4. Location of Well UNIT LETTER H LOCATED 1930 FEET FROM THE north LINE AND 1230 FEET FROM THE east LINE OF SEC. 32 TWP. 32N RGE. 11W NMPM		12. County San Juan	
21. Elevations (Show whether DF, RT, etc.) 6277' GL		19. Proposed Depth 7640'	19A. Formation Dakota
21A. Kind & Status Plug. Bond		21B. Drilling Contractor	20. Rotary or C.T. Rotary
22. Approx. Date Work will start: June 6, 1981			

PROPOSED CASING AND CEMENT PROGRAM

SIZE OF HOLE	SIZE OF CASING	WEIGHT PER FOOT	SETTING DEPTH	SACKS OF CEMENT	EST. TOP
12-1/4"	9-5/8"	32.30#	200'	110 sxs	
8-3/4"	7"	20#	3220'	260 sxs	
6-1/4"	4-1/2"	10.5# & 11.6#	7640'	550 sxs	

Surface formation is San Jose.

Top of Ojo Alamo sand is at 1568'.

Top of Pictured Cliffs sand is at 2970'.

Fresh water mud will be used from surface to intermediate total depth and air system will be used from intermediate total depth to total depth.

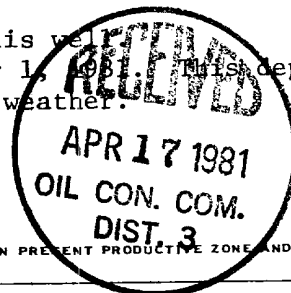
It is anticipated that an IEL be run from intermediate total depth to surface casing, GR-Density from total depth to 1500' and GR-Induction from total depth to intermediate casing.

No abnormal pressures or poisonous gases are anticipated in this well.

It is expected that this well will be drilled before September 1, 1981. This depends on time required for approvals, rig availability, and the weather.

Gas is dedicated.

APPROVAL VALID  
FOR 90 DAYS UNLESS  
DRILLING COMMENCED



IN ABOVE SPACE DESCRIBE PROPOSED PROGRAM: IF PROPOSAL EXPIRES OPEN OR PLUG BACK, GIVE DATA ON PRESENT PRODUCTIVE ZONE AND PROPOSED NEW PRODUCTIVE ZONE. GIVE BLOWOUT PREVENTER PROGRAM, IF ANY.

I hereby certify that the information above is true and complete to the best of my knowledge and belief.

Signed R.E. Fields Title District Engineer Date April 15, 1981

(This space for State Use)

APPROVED BY Frank T. Long TITLE SUPERVISOR DISTRICT #3 DATE APR 17 1981

CONDITIONS OF APPROVAL, IF ANY:

None

## OIL CONSERVATION DIVISION

STATE OF NEW MEXICO

P. O. BOX 2088

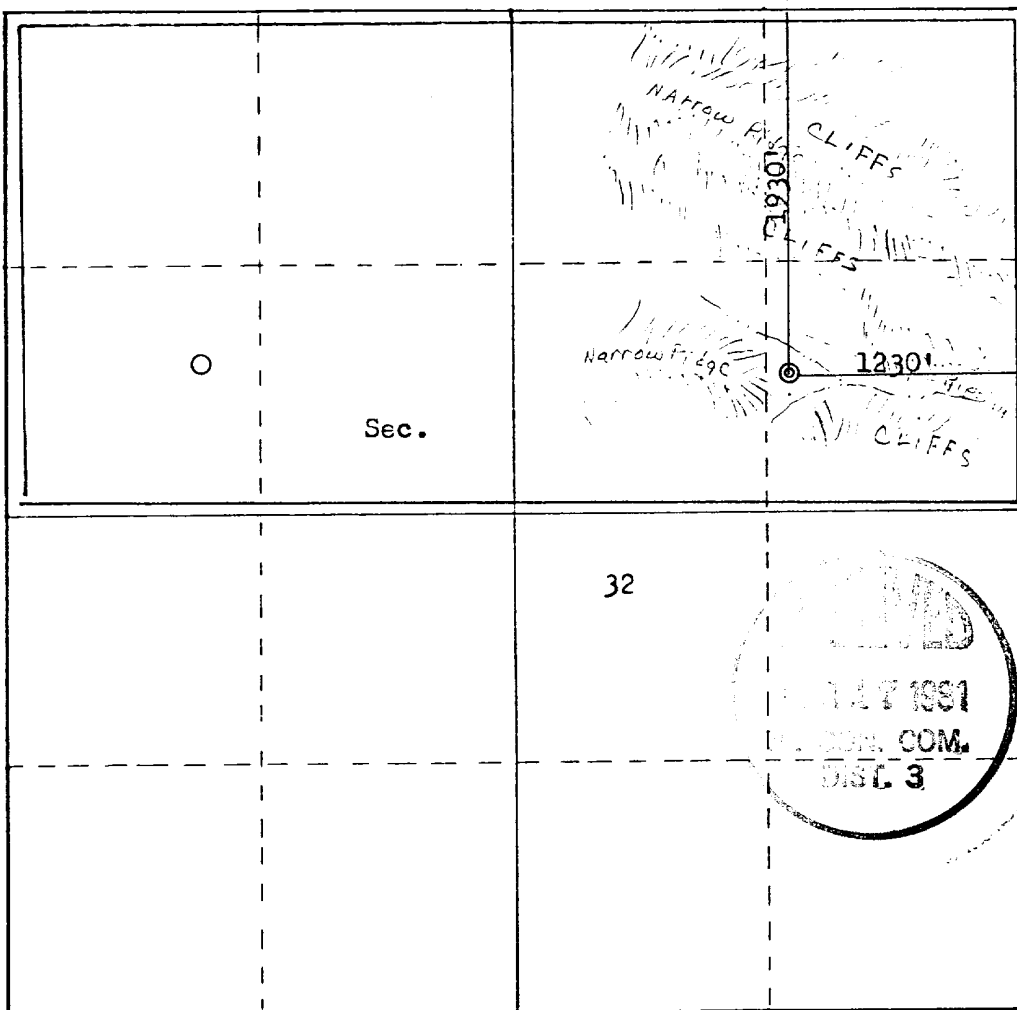
Form C-107  
Revised 10-1-78

ENERGY AND MINERALS DEPARTMENT

SANTA FE, NEW MEXICO 87501

All distances must be from the outer boundaries of the Section.

Operator <b>SOUTPLAND ROYALTY COMPANY</b>			Lease <b>Day-State</b>		Well No. <b>2E</b>
Unit Letter <b>H</b>	Section <b>32</b>	Township <b>32N</b>	Range <b>11W</b>	County <b>San Juan</b>	
Actual Footage Location of Well: <b>1930</b> feet from the <b>North</b> line and <b>1230</b> feet from the <b>East</b> line					
Ground Level Elev. <b>6277</b>	Producing Formation <b>Dakota</b>	Pool <b>Basin Dakota</b>	Dedicated Acreage: <b>320</b> Acres		
1. Outline the acreage dedicated to the subject well by colored pencil or hachure marks on the plat below. 2. If more than one lease is dedicated to the well, outline each and identify the ownership thereof (both as to working interest and royalty). 3. If more than one lease of different ownership is dedicated to the well, have the interests of all owners been consolidated by communitization, unitization, force-pooling, etc? <input type="checkbox"/> Yes <input type="checkbox"/> No   If answer is "yes," type of consolidation _____ If answer is "no," list the owners and tract descriptions which have actually been consolidated. (Use reverse side of this form if necessary.) _____ No allowable will be assigned to the well until all interests have been consolidated (by communitization, unitization, forced-pooling, or otherwise) or until a non-standard unit, eliminating such interests, has been approved by the Commission.					



Scale: 1"=1000'

## CERTIFICATION

I hereby certify that the information contained herein is true and complete to the best of my knowledge and belief.

*R. E. Fielder*

Name  
**Robert E. Fielder**

Position  
**District Engineer**

Company  
**Southland Royalty Company**

Date  
**April 15, 1981**

I hereby certify that the well location shown on this plat was plotted from field notes of actual surveys made by me or under my supervision, and that the same is true and correct to the best of my knowledge and belief.

Date Surveyed  
**January 8, 1981**

Registered Professional Engineer  
and Land Surveyor

*Fred B. Kerr Jr.*  
**Fred B. Kerr Jr.**

Certificate No. **3950**  
**B. KERR, JR.**

SOUTHLAND ROYALTY COMPANY - DRILLING SCHEDULE

DAY STATE #2-E  
1930' FNL & 1230' FEL  
Section 32, T32N, R11W  
San Juan County, New Mexico

Field: Basin Dakota Elevation: 6289' KB  
6277' GL

Geology:

Formation Tops:	Ojo Alamo	1568'	Point Lookout	5230'
	Fruitland	2548'	Gallup	6638'
	Pictured Cliffs	2970'	Graneros	7367'
	Intermediate TD	3220'	Dakota	7507'
	Cliff House	4456'	Total Depth	7640' *

Logging Program: IEL from Intermediate Total Depth to Surface casing.  
GR-Density from Intermediate Total Depth to 1500'.  
GR-Induction from Total Depth to Intermediate Casing.  
GR-Density from Total Depth to 4400'.  
Run mud logger from 5500' to Total Depth.

Drilling:

Contractor: Tool Pusher:  
SRC Rep: SRC Answering Service: 325-1841  
Dispatch Number: 325-7391  
Mud Program: Fresh water mud from surface to Intermediate Total Depth.  
Air from Intermediate Total Depth to Total Depth.  
\* Nitrogen should be used to assist air while drilling  
the Dakota interval.

Material:

Casing Program:	Hole Size	Depth Set	Casing Size	Weight & Grade
	12-1/4"	200'	9-5/8"	32.30# H-40
	8-3/4"	3220'	7"	20.00# K-55
	6-1/4"	3070'-6800'	4-1/2"	10.50# K-55
	6-1/4"	6800'-7640'	4-1/2"	11.60# K-55

Float Equipment:

9-5/8" Surface Casing; B&W Guide Shoe (FC01).  
7" Intermediate Casing: B&W Guide Shoe (FC01). B&W orifice insert  
float valve (FY15), run one joint off bottom.  
Five B&W standard centralizers (AA02), run  
every other joint above the shoe.

4-1/2" Liner: B&W Guide shoe (FC01). B&W flapper float collar (FP01), one joint above shoe. Liner hanger with neoprene pack-off

Wellhead Equipment: 9-5/8" X 10", 2000# bradenhead  
10", 2000# X 6", 2000# tubinghead.

Cementing:

9-5/8" Surface Casing: 110 sacks (130 cu.ft.) of Class "B" with 1/4# gel flake per sack and 3% CaCl<sub>2</sub>. WOC 12 hours. Test to 600# prior to drilling out. (100% excess.)

7" Intermediate Casing: 210 sacks (313 cu.ft.) of Class "B" 50/50 Poz with 6% gel and 1/4# gel flake per sack, followed by 50 sacks (59 cu.ft.) of Class "B" neat with 2% CaCl<sub>2</sub>. (Volume is 50% excess to cover Ojo Alamo.) WOC 12 hours. Test to 1000 psi before drilling out.

4-1/2" Liner: 550 sacks (820 cu.ft.) of Class "B" 50/50 Poz with 6% gel, 1/4# gel flake per sack and 0.6% Halad 9 or equivalent, and 0.5% CFR-2 or equivalent. (70% excess to circulate liner.)  
Precede cement with 20 barrels of gel water.  
If hole gets wet or mist drilling is required use 650 sacks (969 cu.ft.) of above cement (100% excess).

---

L. O. VAN RYAN  
DISTRICT PRODUCTION MANAGER

4/15/81  
JAC/eg



**Southland Royalty Company**

April 15, 1981

Oil Conservation Division  
Mr. Frank Chavez  
1000 Rio Brazos Road  
Aztec, NM 87410

RE: Blowout Preventer Plan

Dear Mr. Chavez:

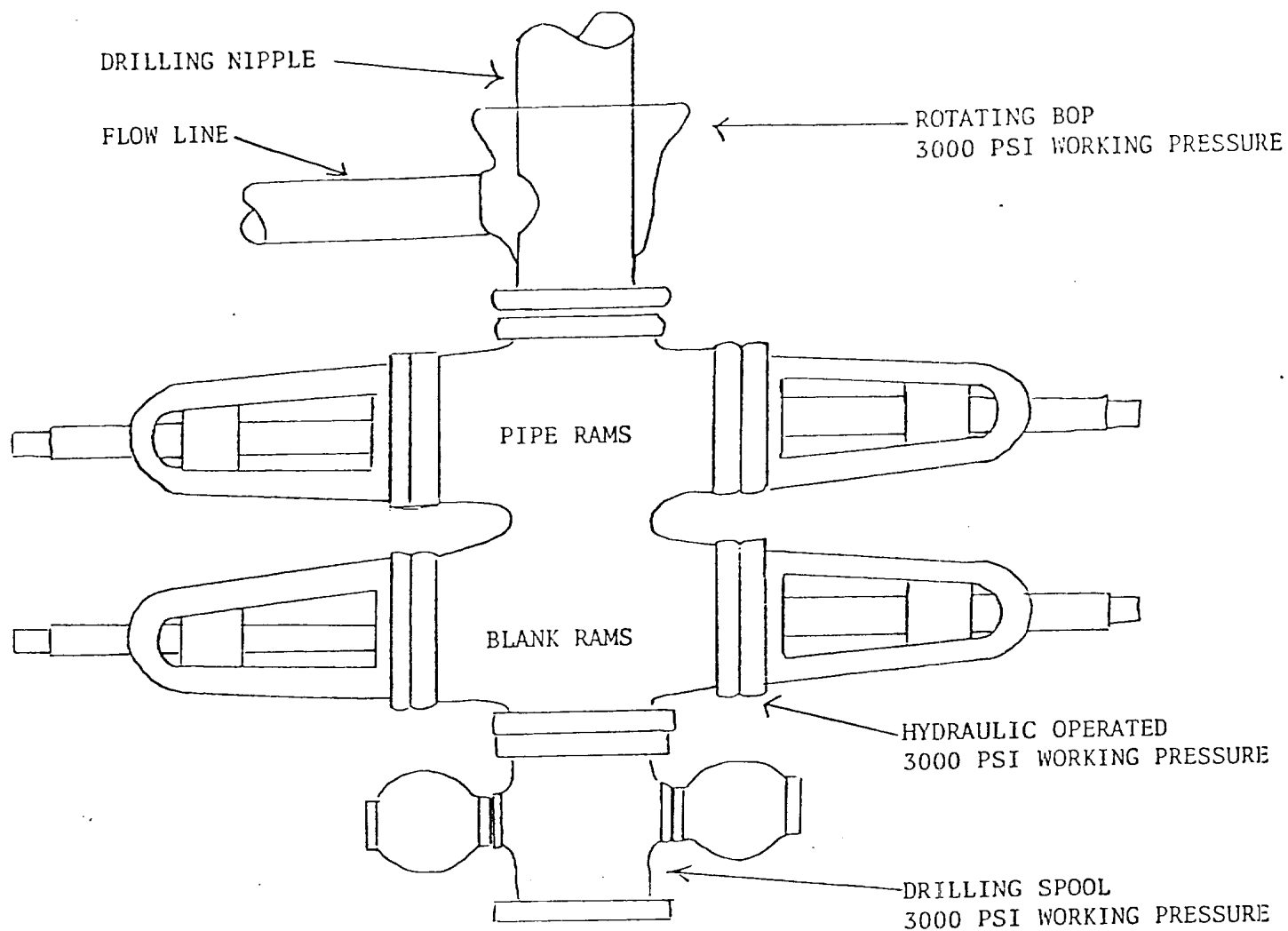
All drilling and completion rigs will be equipped with 6" or larger double gate hydraulic blowout preventers and a hydraulic operated closing unit with steel lines.

The preventer is 3000# working pressure and 6000# test pressure. All crews will be thoroughly trained in the operation of this preventer. The preventer will be tested frequently enough to ensure proper operation.

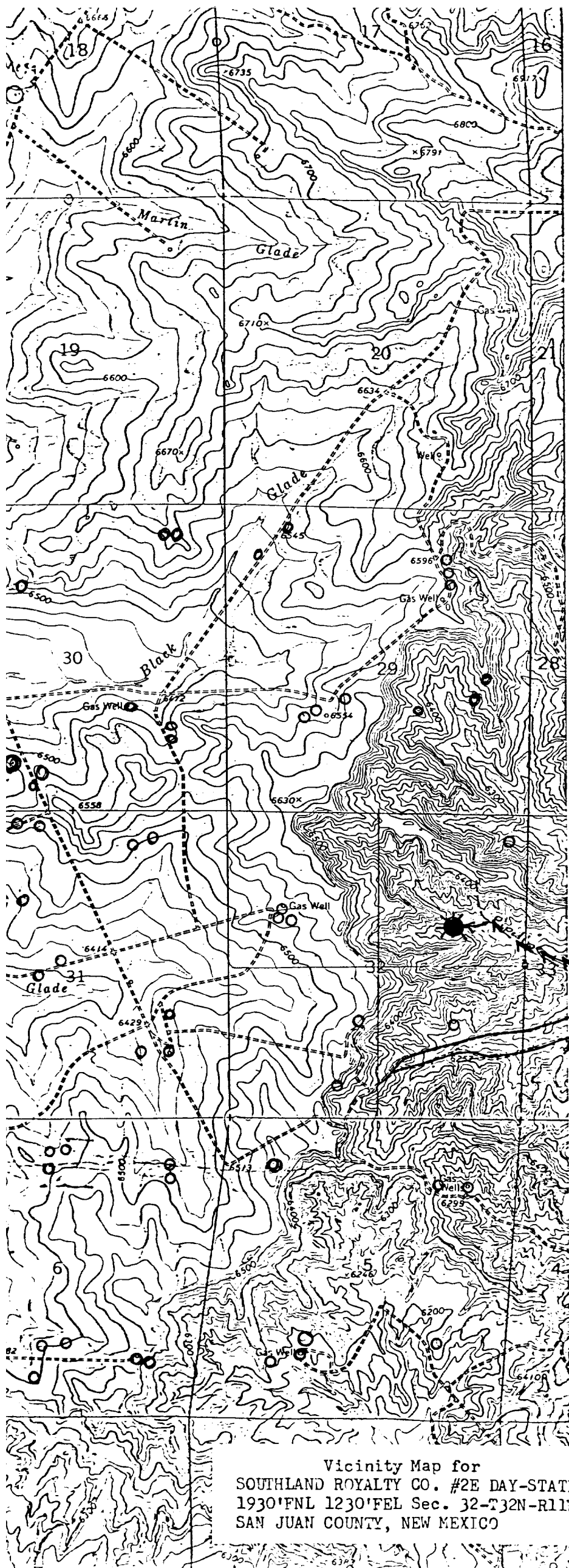
Sincerely,





SOUTHLAND ROYALTY COMPANY

Robert E. Fielder  
District Engineer



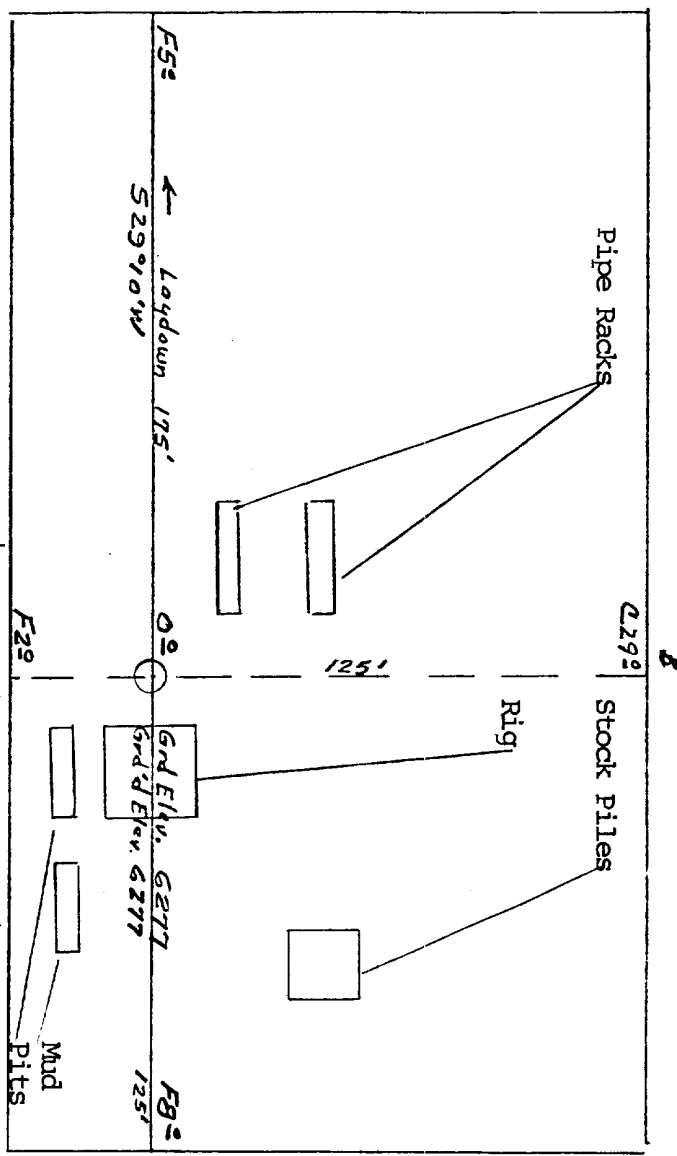
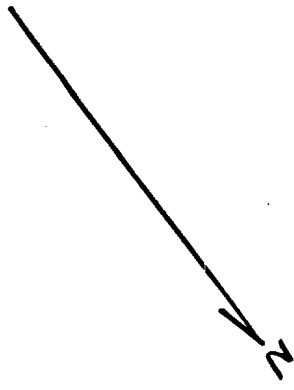
PREVENTERS AND SPOOLS ARE TO HAVE  
THROUGH BORE OF 6" - 3000 PSI OR LARGER



- Proposed Location 
- Existing Locations 
- Proposed Road 
- Existing Roads 

Vicinity Map for  
SOUTHLAND ROYALTY CO. #2E DAY-STATE  
1930'FNL 1230'FEL Sec. 32-T32N-R11W  
SAN JUAN COUNTY, NEW MEXICO

Profile Map for  
 SOUTHLAND ROYALTY CO. #2E DAY-STATE  
 1930'FNL 1230'FEL Sec. 32-T32N-R11W  
 SAN JUAN COUNTY, NEW MEXICO



Vert. 1"=40'  
 Horiz. 1"=100'

6290	
6280	
6270	
6260	

6290	
6280	
6270	
6260	

Reserve Pit  
 F152  
 X 100'



Date 1/8/81