

Form 9-331 C
(May 1963)

SUBMIT IN TRIPLICATE*
(Other instructions on
reverse side)

Form approved.
Budget Bureau No. 42-R1425.

30-045-21751

UNITED STATES
DEPARTMENT OF THE INTERIOR
GEOLOGICAL SURVEY

APPLICATION FOR PERMIT TO DRILL, DEEPEN, OR PLUG BACK

1a. TYPE OF WORK

DRILL ☒

DEEPEN ☐

PLUG BACK ☐

b. TYPE OF WELL

OIL
WELL ☒

GAS
WELL ☐

OTHER

SINGLE
ZONE ☐

MULTIPLE
ZONE ☐

2. NAME OF OPERATOR

Dugan Production Corp.

3. ADDRESS OF OPERATOR

Box 234, Farmington, New Mexico 87401

4. LOCATION OF WELL (Report location clearly and in accordance with any State requirements.*)

At surface

1980' FSL -- 1980' FEL

At proposed prod. zone

14. DISTANCE IN MILES AND DIRECTION FROM NEAREST TOWN OR POST OFFICE*

15 miles northeast Shiprock, New Mexico

15. DISTANCE FROM PROPOSED*

LOCATION TO NEAREST
PROPERTY OR LEASE LINE, FT.
(Also to nearest drlg. unit line, if any) 1980'

18. DISTANCE FROM PROPOSED LOCATION*

TO NEAREST WELL, DRILLING, COMPLETED,
OR APPLIED FOR, ON THIS LEASE, FT.

1000' approx

16. NO. OF ACRES IN LEASE

2240

19. PROPOSED DEPTH

1200'

17. NO. OF ACRES ASSIGNED
TO THIS WELL

40

20. ROTARY OR CABLE TOOLS

Rotary

21. ELEVATIONS (Show whether DF, RT, GR, etc.)

5383' GR

22. APPROX. DATE WORK WILL START*

5-1-75

23.

PROPOSED CASING AND CEMENTING PROGRAM

SIZE OF HOLE	SIZE OF CASING	WEIGHT PER FOOT	SETTING DEPTH	QUANTITY OF CEMENT
8-3/4"	7"	20#	50'	10 SX
6-1/4"	4-1/2"	10.5#	1200'	50 SX

Plan to drill well with air or minimum mud to test Gallup formation. If Gallup productive, plan to set 4-1/2" casing thru formation, selectively perforate, frac well, clean out well after frac, run 2-3/8" tubing, and put well on production.



IN ABOVE SPACE DESCRIBE PROPOSED PROGRAM: If proposal is to deepen or plug back, give data on present productive zone and proposed new productive zone. If proposal is to drill or deepen directionally, give pertinent data on subsurface locations and measured and true vertical depths. Give blowout preventer program, if any.

24.

SIGNED Original signed by T. A. Dugan

TITLE Petroleum Engineer

DATE 3-20-75

Thomas A. Dugan

(This space for Federal or State office use)

PERMIT NO.

APPROVAL DATE

APPROVED BY

TITLE

DATE

CONDITIONS OF APPROVAL, IF ANY:

*See Instructions On Reverse Side

NEW FLEXOGRAPHIC LITHOGRAPHY WITH COATING AND DYEING EFFECTS

For instance, just before the start of the run, the

the color of the ink is changed

the color of the ink is changed

the color of the ink is changed

the color of the ink is changed

the color of the ink is changed

the color of the ink is changed

the color of the ink is changed

the color of the ink is changed

the color of the ink is changed

the color of the ink is changed

the color of the ink is changed

the color of the ink is changed

the color of the ink is changed the subject will be a good print of the ink

the color of the ink is changed the well known color of the ink is changed

the color of the ink is changed the ink is changed the ink is changed

the color of the ink is changed the ink is changed the ink is changed

the color of the ink is changed the ink is changed the ink is changed

the color of the ink is changed the ink is changed the ink is changed

the color of the ink is changed the ink is changed the ink is changed

the color of the ink is changed the ink is changed the ink is changed

the color of the ink is changed the ink is changed the ink is changed

the color of the ink is changed the ink is changed the ink is changed

the color of the ink is changed the ink is changed the ink is changed

the color of the ink is changed the ink is changed the ink is changed

the color of the ink is changed the ink is changed the ink is changed

the color of the ink is changed the ink is changed the ink is changed

the color of the ink is changed the ink is changed the ink is changed

the color of the ink is changed the ink is changed the ink is changed

the color of the ink is changed the ink is changed the ink is changed

the color of the ink is changed the ink is changed the ink is changed

the color of the ink is changed the ink is changed the ink is changed

the color of the ink is changed the ink is changed the ink is changed

the color of the ink is changed the ink is changed the ink is changed

the color of the ink is changed the ink is changed the ink is changed

the color of the ink is changed the ink is changed the ink is changed

**NEW MEXICO OIL CONSERVATION COMMISSION
WELL LOCATION AND ACREAGE DEDICATION PLAT**

Form C-102
Supersedes C-128
Effective 1-1-65

All distances must be from the outer boundaries of the Section.

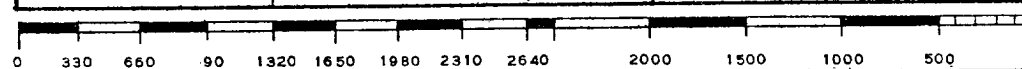
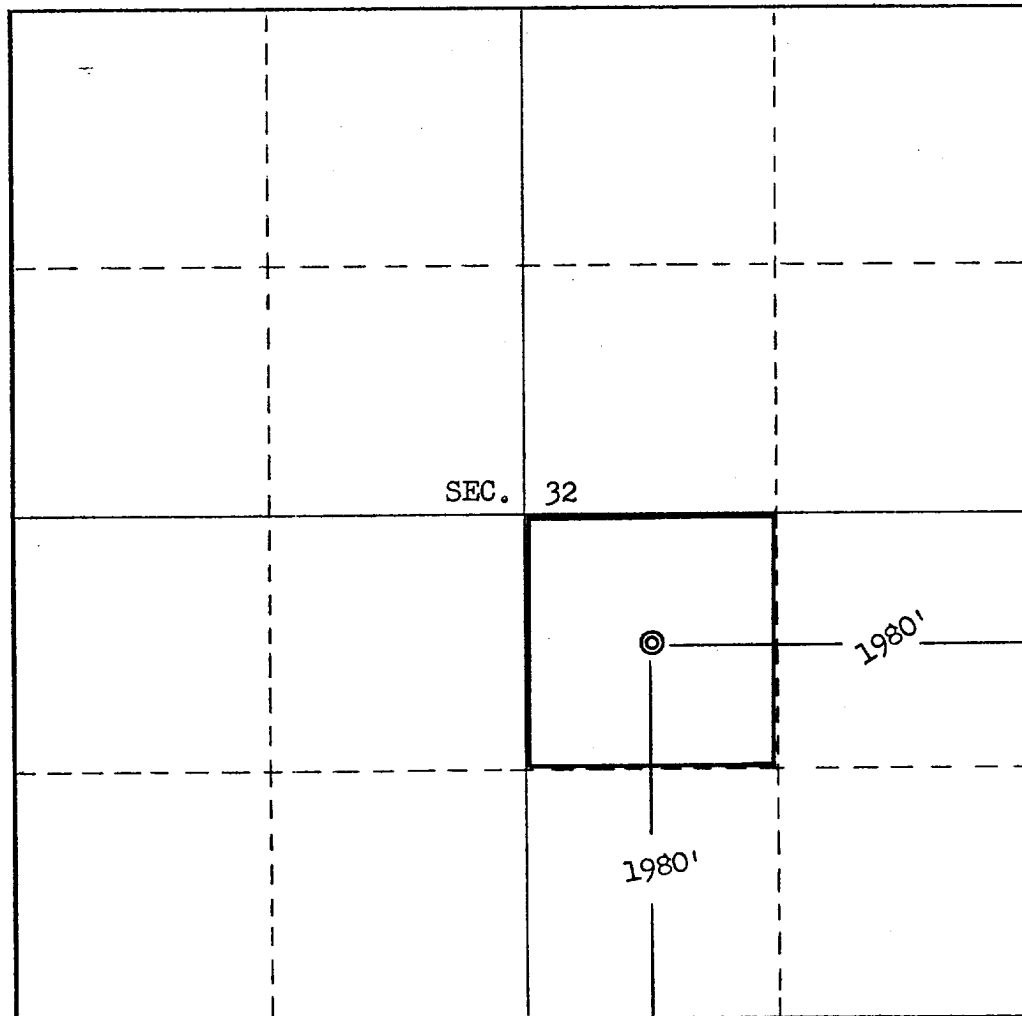
Operator Dugan Production Corporation			Lease Horseshoe		Well No. 4
Unit Letter J	Section 32	Township 32 North	Range 17 West	County San Juan	
Actual Footage Location of Well: 1980 feet from the South line and 1980 feet from the East line					
Ground Level Elev. 5383	Producing Formation Gallup		Pool Horseshoe		Dedicated Acreage: 40 Acres

1. Outline the acreage dedicated to the subject well by colored pencil or hachure marks on the plat below.
2. If more than one lease is dedicated to the well, outline each and identify the ownership thereof (both as to working interest and royalty).
3. If more than one lease of different ownership is dedicated to the well, have the interests of all owners been consolidated by communitization, unitization, force-pooling, etc?

☐ Yes ☐ No If answer is "yes," type of consolidation _____

If answer is "no," list the owners and tract descriptions which have actually been consolidated. (Use reverse side of this form if necessary.) _____

No allowable will be assigned to the well until all interests have been consolidated (by communitization, unitization, forced-pooling, or otherwise) or until a non-standard unit, eliminating such interests, has been approved by the Commission.

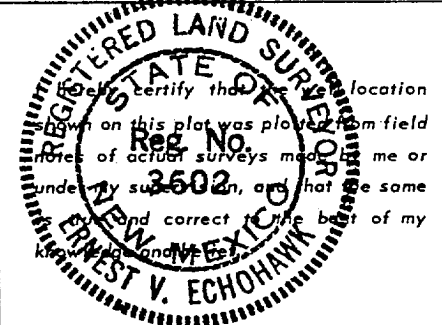


CERTIFICATION

I hereby certify that the information contained herein is true and complete to the best of my knowledge and belief.

Original signed by **T. A. Dugan**

Name
Thomas A. Dugan
Position
Petroleum Engineer
Company
Dugan Production Corp.
Date
3-20-75



Date Surveyed
March 12, 1975
Registered Professional Engineer and/or Land Surveyor

Certificate No. **3602**
E.V. Echohawk IS