

UNITED STATES
DEPARTMENT OF THE INTERIOR
BUREAU OF LAND MANAGEMENT

(Other instructions on
reverse side)

Form approved.
Budget Bureau No. 1004-0136
Expires August 31, 1985

APPLICATION FOR PERMIT TO DRILL, DEEPEN, OR PLUG BACK

1a. TYPE OF WORK

DRILL ☒

DEEPEN ☐

PLUG BACK ☐

b. TYPE OF WELL

OIL
WELL ☒

GAS
WELL ☒

OTHER

SINGLE
ZONE ☐

MULTIPLE
ZONE ☒

2. NAME OF OPERATOR

LOBO PRODUCTION

3. ADDRESS OF OPERATOR

P.O. BOX 2364 Farmington, NM 87499

4. LOCATION OF WELL (Report location clearly and in accordance with any State requirements.)

At surface

885' FSL 824' FEL

At proposed prod. zone

885' FSL 824' FEL

14. DISTANCE IN MILES AND DIRECTION FROM NEAREST TOWN OR POST OFFICE*

5 miles North and 3 miles Northwest La Plata Post Office

10. DISTANCE FROM PROPOSED*

LOCATION TO NEAREST
PROPERTY OR LEASE LINE, FT.
(Also to nearest drlg. unit line, if any)

18. DISTANCE FROM PROPOSED LOCATION*
TO NEAREST WELL, DRILLING, COMPLETED,
OR APPLIED FOR, ON THIS LEASE, FT.

16. NO. OF ACRES IN LEASE

240.45

19. PROPOSED DEPTH

3200'

17. NO. OF ACRES ASSIGNED
TO THIS WELL

120.28 acres

20. ROTARY OR CABLE TOOLS

Rotary

21. ELEVATIONS (Show whether DF, RT, GR, etc.)

6239 Gr.

22. APPROX. DATE WORK WILL START*

October 31, 1984

23. DRILLING OPERATIONS AUTHORIZED ARE
SUBJECT TO COMPLIANCE WITH ATTACHED
"GENERAL REQUIREMENTS"

PROPOSED CASING ELEMENTS

This action is subject to administrative
appeal pursuant to 30 CFR 290.

SIZE OF HOLE	SIZE OF CASING	WEIGHT PER FOOT	SETTING DEPTH	QUANTITY OF CEMENT
12 1/4"	8 5/8"	K-55 - 24#	100'	Circulate 100sks (100.5 Cu Ft)
7 7/8"	5 1/2"	J-55 - 15.5#	3200'	600 sacks

Will drill 12 1/4" hole to 100' and set 100' of 8 5/8" - 24# used casing with 100 sacks cement. Will drill 7 7/8" hole to 3200' and run open hole logs. Will set 3200' of 5 1/2" J-55 15.5# casing with 600 sacks cement and bring up over Mesa Verde formation if well appears productive. Will perforate and stimulate as required.

FORMATION

ESTIMATED TOPS

CONTENT

Point Look Out	690	Water
Mancos	1030	Shale
Gallup	2120	Oil & Gas
Green Horn	2837	Tite
Dakota	2964	Gas

IN ABOVE SPACE DESCRIBE PROPOSED PROGRAM: If proposal is to deepen or plug back, give data on present productive zone and proposed new productive zone. If proposal is to drill or deepen directionally, give pertinent data on subsurface locations and measured and true vertical depths. Give blowout preventer program, if any.

24.

SIGNED

TITLE Partner-Operator

(This space for Federal or State use)

PERMIT NO.

APPROVAL DATE

APPROVED BY

TITLE

CONDITIONS OF APPROVAL, IF ANY

OCT 16 1984
OIL CON. DIV.
DIST. 3

NMOCC

*See Instructions On Reverse Side

Title 18 U.S.C. Section 1001, makes it a crime for any person knowingly and willfully to make to any department or agency of the United States any false, fictitious or fraudulent statements or representations as to any matter within its jurisdiction.

5. LEASE DESIGNATION AND SERIAL NO.

NM 23246

6. IF INDIAN, ALLOTTEE OR TRIBE NAME

7. UNIT AGREEMENT NAME

8. FARM OR LEASE NAME

Virgo

9. WELL NO.

#1

10. FIELD AND POOL, OR WILDCAT

WILDCAT Gallup/Basin Dakota

11. SEC., T., R., M., OR BLK.
AND SURVEY, OR AREA

Sec 8, T32N, R13W

12. COUNTY OR PARISH

13. STATE

San Juan

New Mexico

All distances must be from the outer boundaries of the Section.

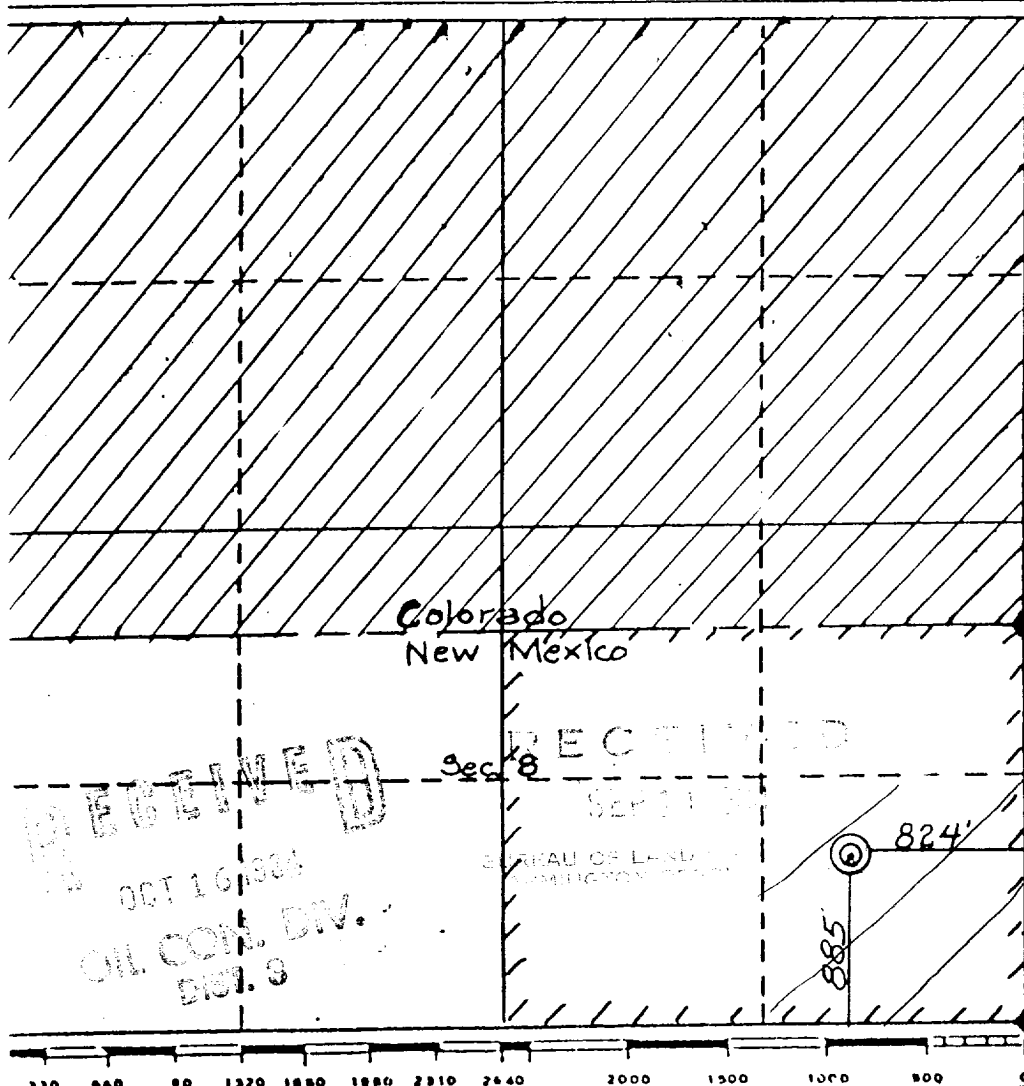
Operator LOBO PRODUCTION		Lease Virgo		Well No. 21	
Letter P	Section 8	Township 32 NORTH	Range 13 WEST	County SAN JUAN	
Actual Footage Location of Well: 885 feet from the SOUTH line and 924 feet from the EAST line					
Surface Level Elev. 6239	Producing Formation Gallup & Dakota	Pool Wildcat Gallup - Basin Dakota		Dedicated Acreage: 120.73 Acres	

1. Outline the acreage dedicated to the subject well by colored pencil or hatchure marks on the plat below. **120.73**
2. If more than one lease is dedicated to the well, outline each and identify the ownership thereof (both as to working interest and royalty).
3. If more than one lease of different ownership is dedicated to the well, have the interests of all owners been consolidated by communitization, unitization, force-pooling, etc?

☐ Yes ☐ No If answer is "yes," type of consolidation _____

If answer is "no," list the owners and tract descriptions which have actually been consolidated. (Use reverse side of this form if necessary.) _____

No allowable will be assigned to the well until all interests have been consolidated (by communitization, unitization, forced-pooling, or otherwise) or until a non-standard unit, eliminating such interests, has been approved by the Division.



CERTIFICATION

I hereby certify that the information contained herein is true and complete to the best of my knowledge and belief.

[Signature]

Name
R.E. LAURITSEN

Position
PARTNER

Company
Lobo Production

Date
8-13-84

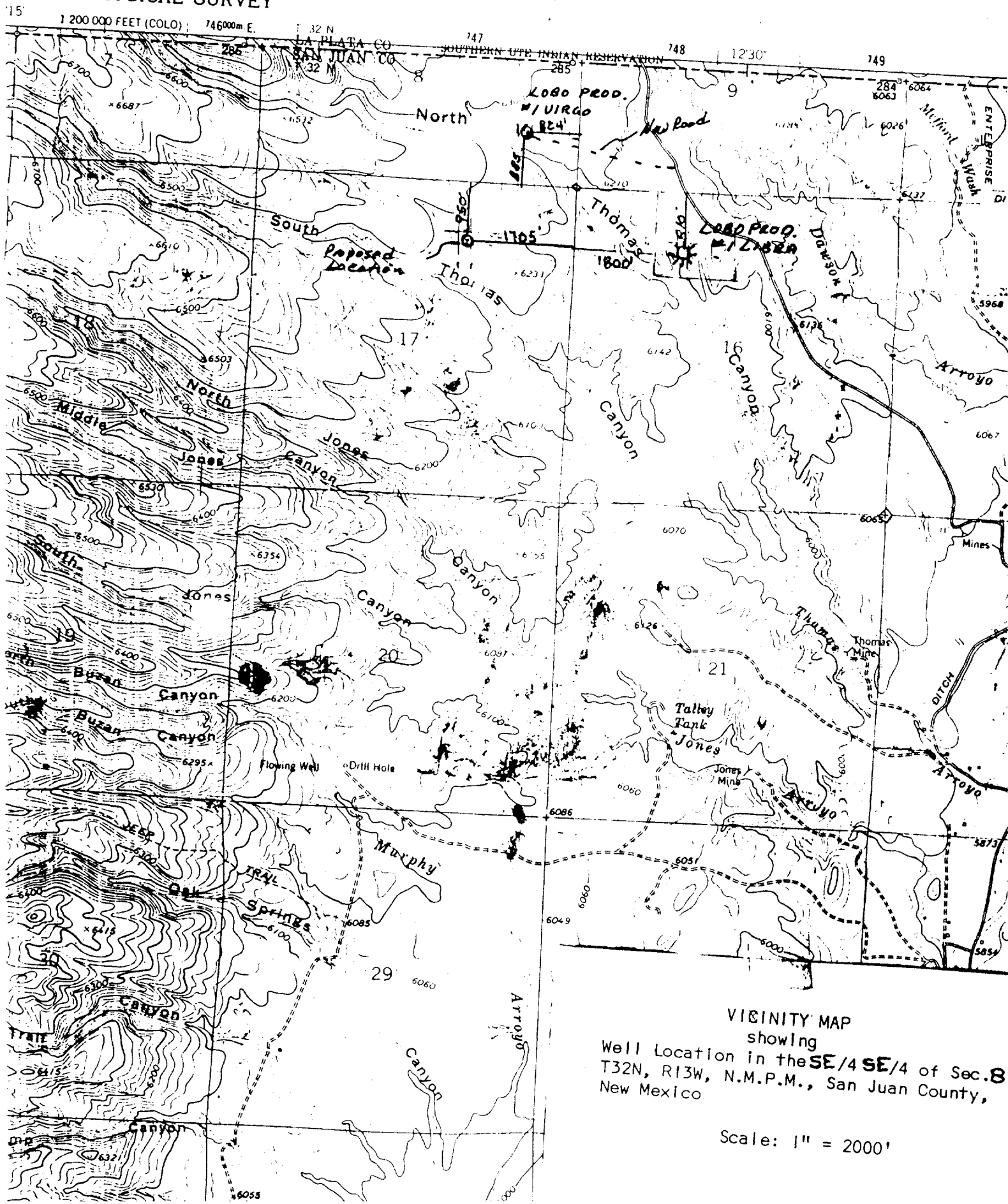
I hereby certify that the well location shown on this plat was plotted from field notes of actual surveys made by me or under my supervision, and that the same is true and correct to the best of my knowledge and belief.

7-20-84
Date Surveyed
[Signature]

Registered Professional Land Surveyor
and/or Land Surveyor
Curtis G. Stocking

Certificate No.
5980

UNITED STATES
DEPARTMENT OF THE INTERIOR
GEOLOGICAL SURVEY



VICINITY MAP
showing
Well Location in the SE/4 SE/4 of Sec. 8
T32N, R13W, N.M.P.M., San Juan County,
New Mexico

Scale: 1" = 2000'