

Submit to Appropriate District Office
 State Lease - 6 copies
 Fee Lease - 5 copies

STATE OF NEW MEXICO
 Energy, Minerals and Natural Resources Department

Form C-101
 Revised 1-1-89

OIL CONSERVATION DIVISION
 P.O. Box 2088
 Santa Fe, New Mexico 87504-2088

DISTRICT I
 P.O. Box 1980, Hobbs, NM 88240

DISTRICT II
 P.O. Drawer DD, Artesia, NM 88210

DISTRICT III
 1000 Rio Brazos Rd., Aztec, NM 87410

API NO. (assigned by OCD on New Wells)
30-045-27525

5. Indicate Type of Lease
 STATE FEE

6. State Oil & Gas Lease No.
 E 5388-1

APPLICATION FOR PERMIT TO DRILL, DEEPEN, OR PLUG BACK

1a. Type of Work:
 DRILL RE-ENTER DEEPEN PLUG BACK

b. Type of Well:
 OIL WELL GAS WELL OTHER
 SINGLE ZONE MULTIPLE ZONE

2. Name of Operator
 MESA OPERATING LIMITED PARTNERSHIP

3. Address of Operator
 P.O. Box 2009, AMARILLO, TEXAS 79189

4. Well Location
 Unit Letter M : 970 Feet From The South Line and 1235 Feet From The West Line
 Section 36 Township 32N Range 11W NMPM San Juan County

7. Lease Name or Unit Agreement Name
 FC STATE COM

8. Well No.
 # 13 W/300

9. Pool name or Wildcat
 Basin Fruitland Coal

10. Proposed Depth
 3180'

11. Formation
 Fruitland Coal

12. Rotary or C.T.
 Rotary

13. Elevations (Show whether DF, RT, GR, etc.)
 6318'

14. Kind & Status Plug Bond
 Blanket

15. Drilling Contractor
 Not Yet Determined

16. Approx. Date Work will start

17. PROPOSED CASING AND CEMENT PROGRAM

SIZE OF HOLE	SIZE OF CASING	WEIGHT PER FOOT	SETTING DEPTH	SACKS OF CEMENT	EST. TOP
12 1/4"	8 5/8"	24#	200'	150 sx 'B'+2%CC	Surface
7 7/8"	5 1/2"	17#	3180'	400 Poz/300 'B'	Surface
	2 3/8"	4.7#	3080'		

Propose to spud well with 12 1/4" hole and drill to 200' and set 8 5/8" surface casing. Will cement with 150 sx of Class "B" and raise cement to surface. Will nipple up 3000 psi BOP assembly and drill 7 7/8" hole to TD of 3180' with fresh water mud system. Will then log well and evaluate for possible commercial production. If successful, will then run 5 1/2" casing to 3180' and cement with 400 sx Pozmix followed by 300 sx Class "B" cement. Will move off drilling rig and move in completion unit.

APPROVAL NUMBER 5-6-90-
 WORK COMMENCED
 WELL TO BE SUBMITTED
 WITHIN 30 DAYS

RECEIVED
 NOV 06 1989
 OIL CON. DIV
 DIST. 2

NMOCD-Aztec (0+5), WF, Reg, Land, Expl., Drilling

IN ABOVE SPACE DESCRIBE PROPOSED PROGRAM: IF PROPOSAL IS TO DEEPEN OR PLUG BACK, GIVE DATA ON PRESENT PRODUCTIVE ZONE AND PROPOSED NEW PRODUCTIVE ZONE. GIVE BLOWOUT PREVENTER PROGRAM, IF ANY.

I hereby certify that the information above is true and complete to the best of my knowledge and belief.

SIGNATURE R. E. Markes TITLE Regulatory Agent DATE 11/3/89

TYPE OR PRINT NAME _____ TELEPHONE NO. _____

(This space for State Use)

APPROVED BY [Signature] TITLE DEPUTY OIL & GAS INSPECTOR, DIST. #3 DATE NOV 06 1989

CONDITIONS OF APPROVAL, IF ANY:

OIL CONSERVATION DIVISION

P.O. Box 2088

Santa Fe, New Mexico 87504-2088

DISTRICT I

P.O. Box 1980, Hobbs, NM 88240

DISTRICT II

P.O. Drawer DD, Artesia, NM 88210

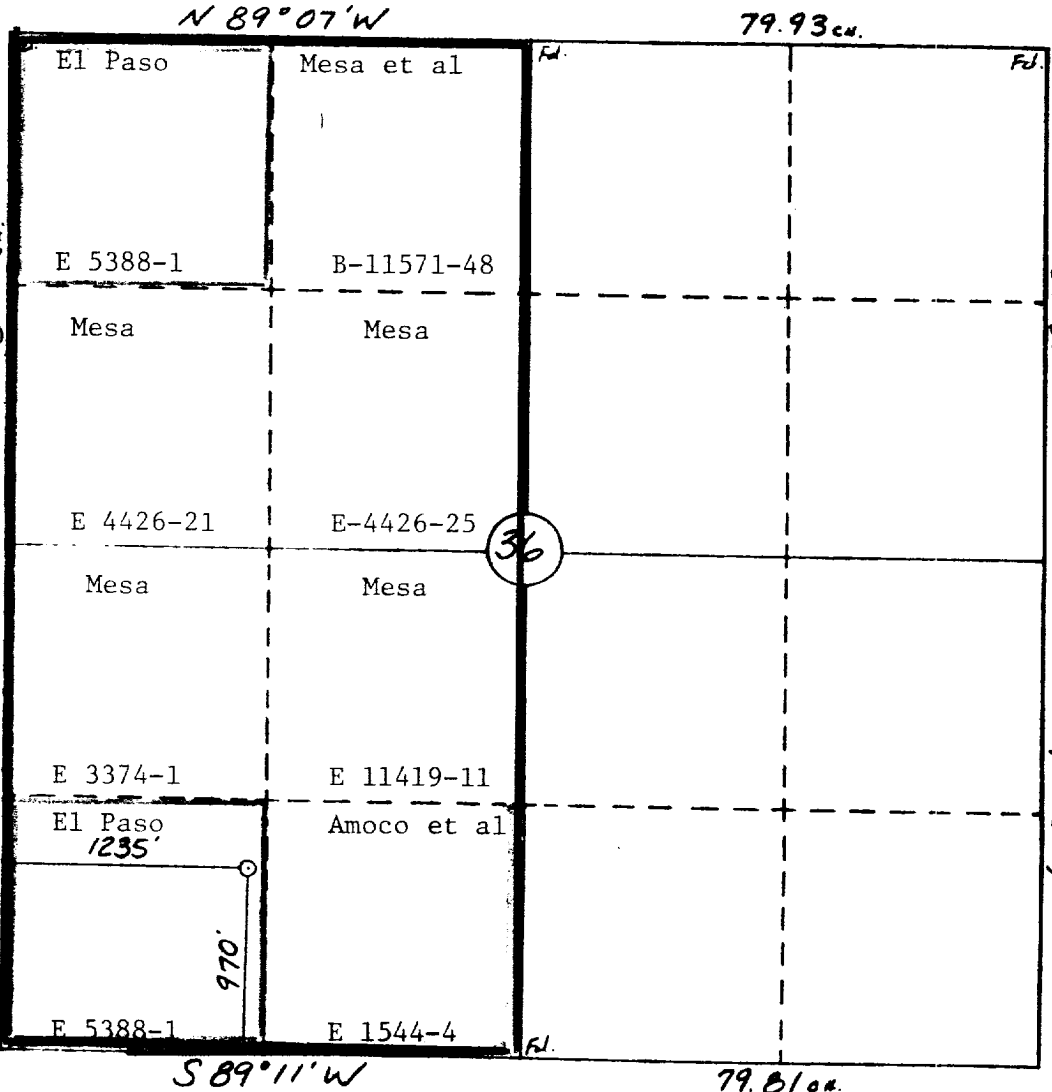
DISTRICT III

1000 Rio Brazos Rd., Aztec, NM 87410

WELL LOCATION AND ACREAGE DEDICATION PLAT

All Distances must be from the outer boundaries of the section

Operator MESA OPERATING LIMITED PARTNERSHIP		Lease FC STATE COM		Well No. 13
Use Letter M	Section 36	Township 32 N	Range 11 W	County San Juan
Actual Footage Location of Well: 970 feet from the South line and 1235 feet from the West line				
Ground level Elev. 6318	Producing Formation Fruitland Coal	Pool Basin Fruitland Coal	Dedicated Acreage: W/2 320 Acres	
<p>1. Outline the acreage dedicated to the subject well by colored pencil or hachure marks on this plat below.</p> <p>2. If more than one lease is dedicated to the well, outline each and identify the ownership thereof (both as to working interest and royalty).</p> <p>3. If more than one lease of different ownership is dedicated to the well, have the interest of all owners been consolidated by communitization, unitization, force-pooling, etc.? <input checked="" type="checkbox"/> Yes <input type="checkbox"/> No If answer is "yes" type of consolidation <u>Communitization</u></p> <p>If answer is "no" list the owners and tract descriptions which have actually been consolidated. (Use reverse side of this form if necessary.)</p> <p>No allowable will be assigned to the well until all interests have been consolidated (by communitization, unitization, forced-pooling, or otherwise) or until a non-standard unit, eliminating such interest, has been approved by the Division.</p>				



OPERATOR CERTIFICATION

I hereby certify that the information contained herein is true and complete to the best of my knowledge and belief.

Signature: *R. E. Mathis*

Printed Name: **R. E. Mathis**

Position: **Regulatory Agent**

Company: **Mesa Ltd Partnership**

Date: **11/3/89**

SURVEYOR CERTIFICATION

I hereby certify that the well location shown on this plat was plotted from field notes of actual surveys made by me or under my supervision, and that the same is true and correct to the best of my knowledge and belief.

Date Surveyed: **8-2-89**

Surveyor: **William E. Mahanke II**

Signature: *William E. Mahanke II*

Professional Seal: **WILLIAM E. MAHANKE II, NEW MEXICO, #8466, SURVEYOR**