

UNITED STATES
DEPARTMENT OF THE INTERIOR
BUREAU OF LAND MANAGEMENT

SUBMIT IN TRIPPLICATE
(Other instructions on
reverse side)

FORM APPROVED
OMB NO. 1004-0136
Expires: February 28, 1995

APPLICATION FOR PERMIT TO DRILL OR DEEPEN

1a. TYPE OF WORK

DRILL ☒

DEEPEN ☐

b. TYPE OF WELL

OIL WELL ☐

GAS WELL ☒

OTHER ☐

SINGLE ZONE ☒

MULTIPLE ZONE ☒

2. NAME OF OPERATOR

Cross Timbers Operating Company

3. ADDRESS AND TELEPHONE NO.

2700 Farmington Ave., Bldg. K. Ste 1 Farmington, NM 87401

4. LOCATION OF WELL (Report location clearly and in accordance with any State requirements.)
At surface

2350' FSL & 800' FWL Sec 26, T32N, R14W
At proposed prod. zone

14. DISTANCE IN MILES AND DIRECTION FROM NEAREST TOWN OR POST OFFICE*

Please see Attached Surface Use Program

15. DISTANCE FROM PROPOSED*

LOCATION TO NEAREST
PROPERTY OR LEASE LINE, FT.
(Also to nearest drlg. unit line, if any)

800'

16. NO. OF ACRES IN LEASE

17. NO. OF ACRES ASSIGNED
TO THIS WELL

SW/4 160 acres

18. DISTANCE FROM PROPOSED LOCATION*
TO NEAREST WELL, DRILLING, COMPLETED,
OR APPLIED FOR, ON THIS LEASE, FT.

2500'

19. PROPOSED DEPTH

3,350'

20. ROTARY OR CABLE TOOLS

Rotary

21. ELEVATIONS (Show whether DF, RT, GR, etc.)

6,143' GL

22. APPROX. DATE WORK WILL START*

Winter 2001

23. PROPOSED CASING AND CEMENTING PROGRAM

SIZE OF HOLE	GRADE SIZE OF CASING	WEIGHT PER FOOT	SETTING DEPTH	QUANTITY OF CEMENT
12" - 1 1/4"	8-5/8" J-55	24.0#	350'	220 sx Type III
7-7/8"	4-1/2" J-55	10.5#	3,350'	635 sx 50/50 Poz. Type III cmt

SEE ATTACHED
CONDITIONS OF APPROVAL

Venting / Flaring approved for 30 days
per NTL-4A

Set 8-5/8", 24.0#, J-55 STC surface csg @ 350'. Cmt w/approx 220 sx Type III cmt w/additives.
Attempt to circ cmt to surface.

Install & test BOP equipment as required. Drill 7-7/8" hole to approx 3,350'.

Set 4-1/2", 10.5#, J-55, STC production csg @ 3,350' TVD. Cmt w/approx 635 sx 50/50 Poz. Type III
cmt w/additives. Final cmt volumes will be obtained fr/caliper log + 30% excess. Attempt to circ
cmt to surface.

Approval of this agreement does not
warrant or certify that the operator
thereof and other holders of operating
rights hold legal or equitable title
to those rights in the subject lease
which are committed hereto...

IN ABOVE SPACE DESCRIBE PROPOSED PROGRAM: If proposal is to deepen, give data on present productive zone and proposed new productive zone. If proposal is to drill or
deepen directionally, give pertinent data on subsurface locations and measured and true vertical depths. Give blowout prevention program, if any.

24.

SIGNED

TITLE Drilling Engineer

DATE 10/2/00

(This space for Federal or State office use)

PERMIT NO.

APPROVAL DATE

APPROVED FOR A PERIOD
NOT TO EXCEED 1 YEAR

Application approval does not warrant or certify that the applicant holds legal or equitable title to those rights in the subject lease which would entitle the applicant to conduct operations thereon.

CONDITIONS OF APPROVAL, IF ANY:

ACTING MINERALS STAFF CHIEF

APPROVED BY

TITLE

DATE

*See Instructions On Reverse Side

Title 18 U.S.C. Section 1001, makes it a crime for any person knowingly and willfully to make to any department or agency of the United States any false,
fictitious or fraudulent statements or representations as to any matter within its jurisdiction.

District I
PO Box 1980, Hobbs, NM 88241-1980

District II
PO Drawer 00, Artesia, NM 88211-0719

District III
1000 Rio Brazos Rd., Aztec, NM 87410

District IV
PO Box 2088, Santa Fe, NM 87504-2088

State of New Mexico
Energy, Minerals & Natural Resources Department

OIL CONSERVATION DIVISION
PO Box 2088
Santa Fe, NM 87504-2088

Form C-102
Revised February 21, 1994
Instructions on back
Submit to Appropriate District Office
State Lease - 4 Copies
Fee Lease - 3 Copies

☐ AMENDED REPORT

WELL LOCATION AND ACREAGE DEDICATION PLAT

*API Number 30-045-30492		*Pool Code 86720	*Pool Name UTE DOME DAKOTA
*Property Code 22645	*Property Name UTE INDIANS A		*Well Number 31
*GRID No. 167067	*Operator Name CROSS TIMBERS OPERATING COMPANY		*Elevation 6143

10 Surface Location

UL or lot no. L	Section 26	Township 32N	Range 14W	Lot Idn.	Feet from the 2350	North/South line SOUTH	Feet from the 800	East/West line WEST	County SAN JUAN
--------------------	---------------	-----------------	--------------	----------	-----------------------	---------------------------	----------------------	------------------------	--------------------

11 Bottom Hole Location If Different From Surface

UL or lot no.	Section	Township	Range	Lot Idn.	Feet from the	North/South line	Feet from the	East/West line	County
---------------	---------	----------	-------	----------	---------------	------------------	---------------	----------------	--------

12 Dedicated Acres 160	13 Joint or Infill	14 Consolidation Code	15 Order No.
---------------------------	--------------------	-----------------------	--------------

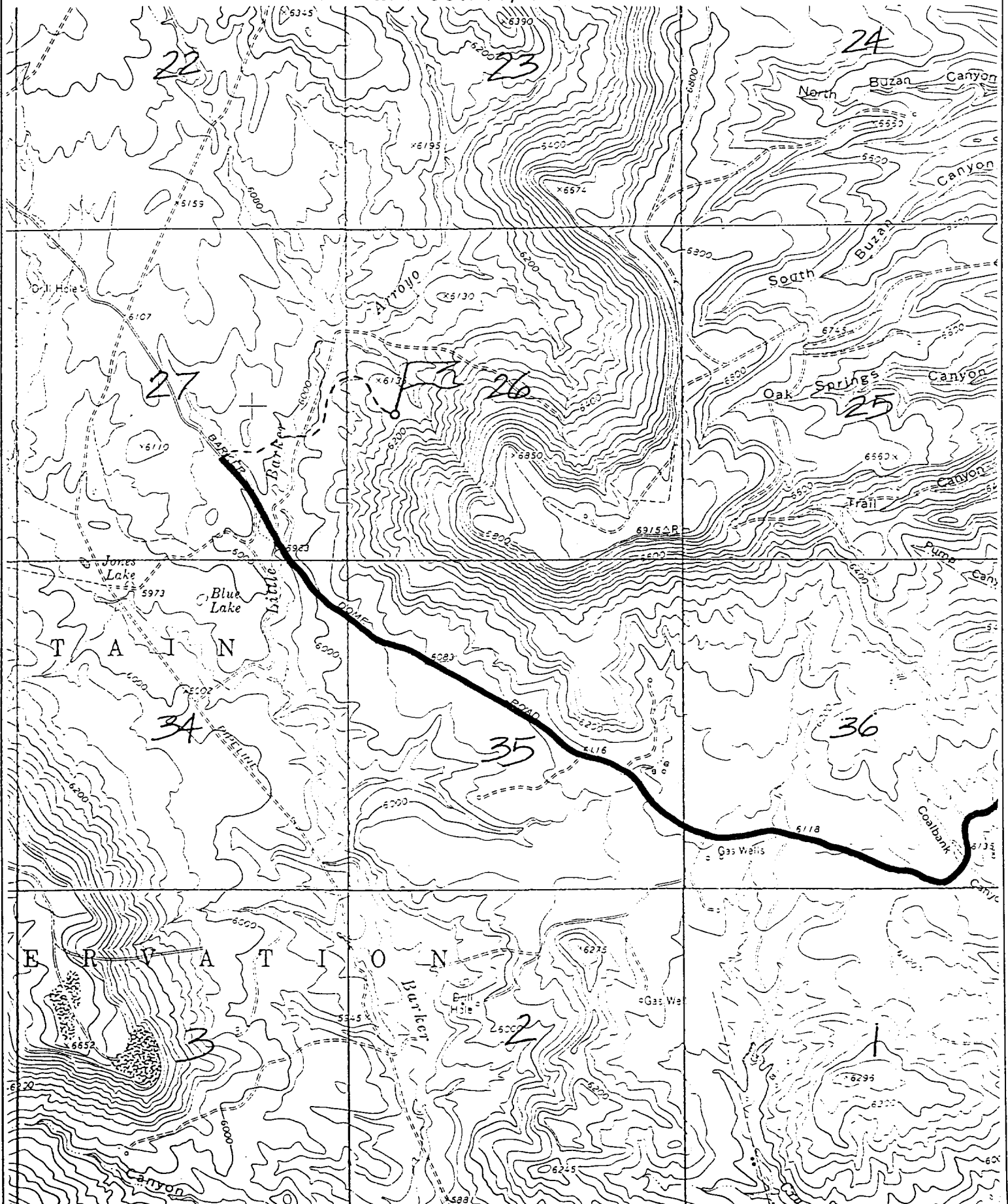
NO ALLOWABLE WILL BE ASSIGNED TO THIS COMPLETION UNTIL ALL INTERESTS HAVE BEEN CONSOLIDATED OR A NON-STANDARD UNIT HAS BEEN APPROVED BY THE DIVISION

	17 OPERATOR CERTIFICATION I hereby certify that the information contained herein is true and complete to the best of my knowledge and belief. Signature <u>Jeff Patton</u> Printed Name <u>Production Engineer</u> Title <u>8/3/00</u> Date
	18 SURVEYOR CERTIFICATION I hereby certify that the well location shown on this plat was plotted from field notes of actual surveys made by me or under my supervision, and that the same is true and correct to the best of my belief. JULY 7, 2000 Date of Survey Signature and Seal of Surveyor Certificate No. <u>6857</u>

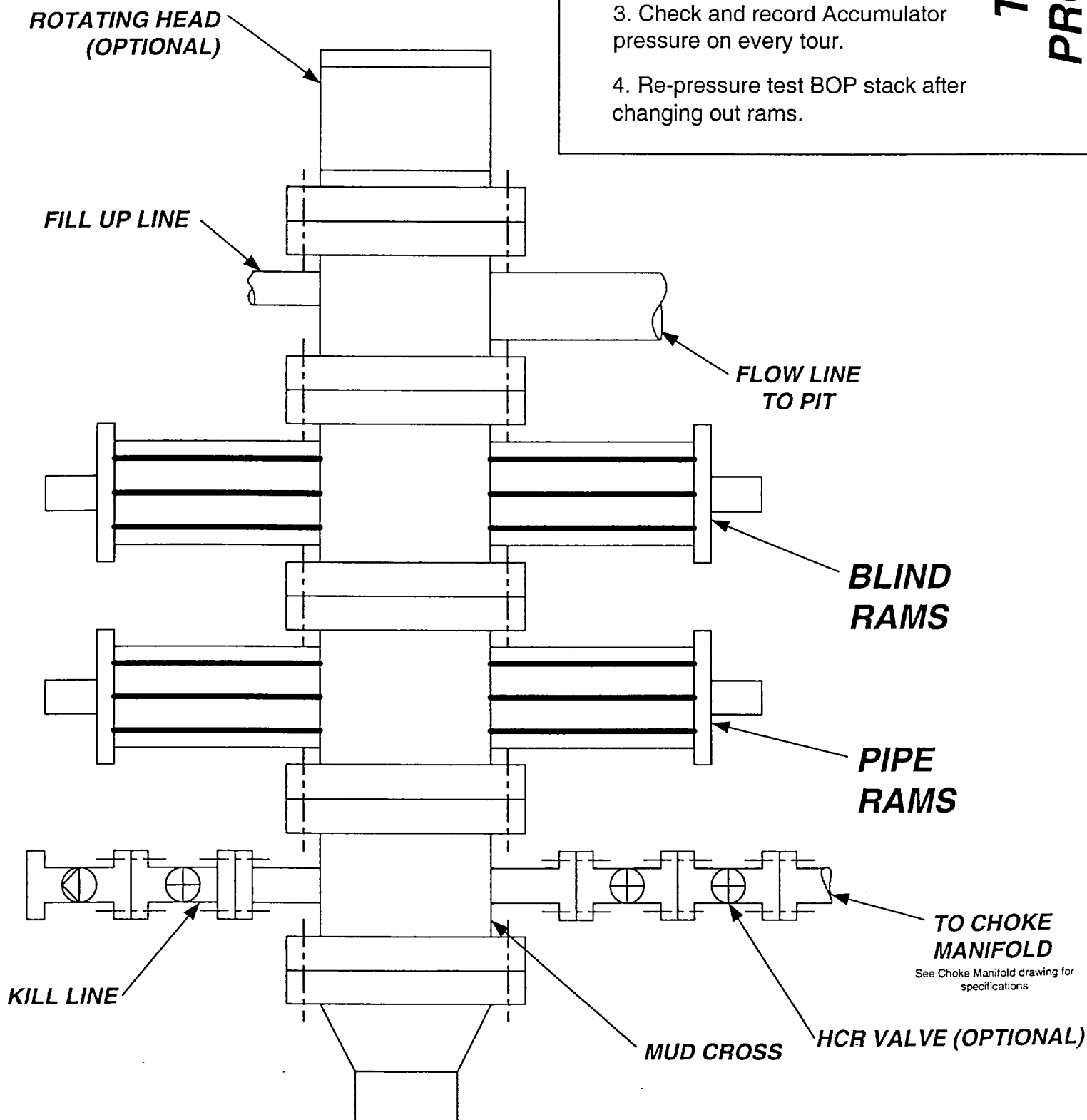
CROSS TIMBER OPERATING COMPANY U. I. INDIANS A #31

2350' FSL & 800' FWL, SECTION 26, T32N, R14W, N.M.P.M.

SAN JUAN COUNTY, NEW MEXICO



BOP SCHEMATIC FOR DRILLING OPERATIONS CLASS 1 NORMAL PRESSURE



1. Test BOP after installation:

Pressure test BOP to 200-300 psig (low pressure) for 5 min.

Test BOP to 1,500 psig (high pressure) for 15 min.

2. Test operation of (both) rams on every trip.

3. Check and record Accumulator pressure on every tour.

4. Re-pressure test BOP stack after changing out rams.

TESTING PROCEDURE