

DISTRICT I  
P.O. Box 1980, Hobbs, NM 88241-1980

DISTRICT II  
P.O. Drawer DD, Artesia, NM 88211-0719

DISTRICT III  
1000 Rio Brazos Rd., Aztec, NM 87410

DISTRICT IV  
PO Box 2088, Santa Fe, NM 87504-2088

State of New Mexico  
Energy, Minerals and Natural Resources Department

OIL CONSERVATION DIVISION  
PO BOX 2088  
Santa Fe, NM 87504-2088

Form C-10.  
Revised February 10, 1994  
Instructions on back  
Submit to Appropriate District Office  
State Lease - 6 Copies  
Fee Lease - 5 Copies

☐ AMENDED REPORT

APPLICATION FOR PERMIT TO DRILL, RE-ENTER, DEEPEX, PLUGBACK, OR ADD A ZONE

|  |   |  |
|--|---|--|
| <sup>1</sup> Operator Name and Address<br>Great Western Drilling<br>c/o Walsh Engineering, 7415 E. Main St., Farmington, NM 87402 (505) 327-4892 |   | <sup>2</sup> OGRID Number<br>009338      |
| <sup>4</sup> Property Code<br>4775   | <sup>5</sup> Property Name<br>J.E. Decker | <sup>3</sup> API Number<br>30-0 45-30696 |
|  |   | <sup>6</sup> Well No.<br>2B              |

<sup>7</sup> Surface Location

| UL or lot no. | Section | Township | Range | Lot Idn | Feet from the | North/South Line | Feet from the | East/West Line | County   |
|---------------|---------|----------|-------|---------|---------------|------------------|---------------|----------------|----------|
| J             | 12      | 32N      | 12W   |         | 1685          | South            | 2185          | East           | San Juan |

<sup>8</sup> Proposed Bottom Hole Location If Different From Surface

| UL or lot no.                                     | Section | Township | Range | Lot Idn | Feet from the                 | North/South Line | Feet from the | East/West Line | County |
|---|---------|----------|-------|---------|-------------------------------|------------------|---------------|----------------|--------|
| <sup>9</sup> Proposed Pool 1<br>Blanco Mesa Verde |         |          |       |         | <sup>10</sup> Proposed Pool 2 |                  |               |                |        |

|                                   |                                       |                                   |                                    |   |
|-----------------------------------|---------------------------------------|-----------------------------------|------------------------------------|---|
| <sup>11</sup> Work Type Code<br>N | <sup>12</sup> Well Type Code<br>G     | <sup>13</sup> Cable/Rotary<br>R   | <sup>14</sup> Lease Type Code<br>P | <sup>15</sup> Ground Level Elevation<br>6335' |
| <sup>16</sup> Multiple<br>N       | <sup>17</sup> Proposed Depth<br>5710' | <sup>18</sup> Formation<br>Mancos | <sup>19</sup> Contractor           | <sup>20</sup> Spud Date<br>July 1, 2001       |

<sup>21</sup> Proposed Casing and Cement Program

| Hole Size | Casing Size | Casing weight/feet | Setting Depth | Sacks of Cement | Estimated TOC |
|-----------|-------------|--------------------|---------------|-----------------|---------------|
| 12-1/4"   | 9-5/8"      | 36#                | 200'          | 165             | Surface       |
| 8-3/4"    | 7"          | 20#                | 3170'         | 295 + 215       | Surface       |
| 6-1/4"    | 4-1/2"      | 10.5#              | 5710'         | 160 + 160       | 3070'         |
|           |             |                    |               |                 |               |
|           |             |                    |               |                 |               |

<sup>22</sup> Describe the proposed program. If this application is to DEEPEX or PLUG BACK give the data on the present productive zone and proposed new productive zone. Describe the blowout prevention program, if any. Use additional sheets if necessary.

Great Western Drilling proposes to drill a vertical well at the above location to develop the Mesa Verde formation according to the attached operations plan. Great Western will install a 2000 psi-rated double ram BOP on the surface casing. The 6-1/4" hole will be drilled with air.

All of Section 12 (336.00 acres), which is an irregular shaped section, is dedicated to this well.

<sup>23</sup> I hereby certify that the information given above is true and complete to the best of my knowledge and belief.

Signature: Paul C. Thompson  
Printed name: Paul C. Thompson, P.E.  
Title: Agent

Date: 06/14/01  
Phone: (505) 327-4892

OIL CONSERVATION DIVISION

|   |                                     |
|---|-------------------------------------|
| Approved by: <u>[Signature]</u>                             |                                     |
| Title: <u>Oil &amp; Gas Inspector</u>                       |                                     |
| Approval Date: <u>JUN 14 2001</u>                           | Expiration Date: <u>JUN 14 2002</u> |
| Conditions of Approval<br>Attached <input type="checkbox"/> |                                     |

District I  
PO Box 1980, Hobbs, NM 88241-1980

District II  
PO Drawer 00, Artesia, NM 88211-0719

District III  
1000 Rio Brazos Rd., Aztec, NM 87410

District IV  
PO Box 2088, Santa Fe, NM 87504-2088

State of New Mexico  
Energy, Minerals & Natural Resources Department

OIL CONSERVATION DIVISION  
PO Box 2088  
Santa Fe, NM 87504-2088

Form C-102  
Revised February 21, 1994  
Instructions on back  
Submit to Appropriate District Office  
State Lease - 4 Copies  
Fee Lease - 3 Copies

☐ AMENDED REPORT

WELL LOCATION AND ACREAGE DEDICATION PLAT

|                             |  |                     |                                |
|-----------------------------|--|---------------------|--------------------------------|
| *API Number<br>30-045-30696 |  | *Pool Code<br>72319 | *Pool Name<br>BLANCO MESAVERDE |
| *Property Code<br>4775      | *Property Name<br>J.E. DECKER            |                     | *Well Number<br>28             |
| *GRID No.<br>009338         | *Operator Name<br>GREAT WESTERN DRILLING |                     | *Elevation<br>6335'            |

<sup>10</sup> Surface Location

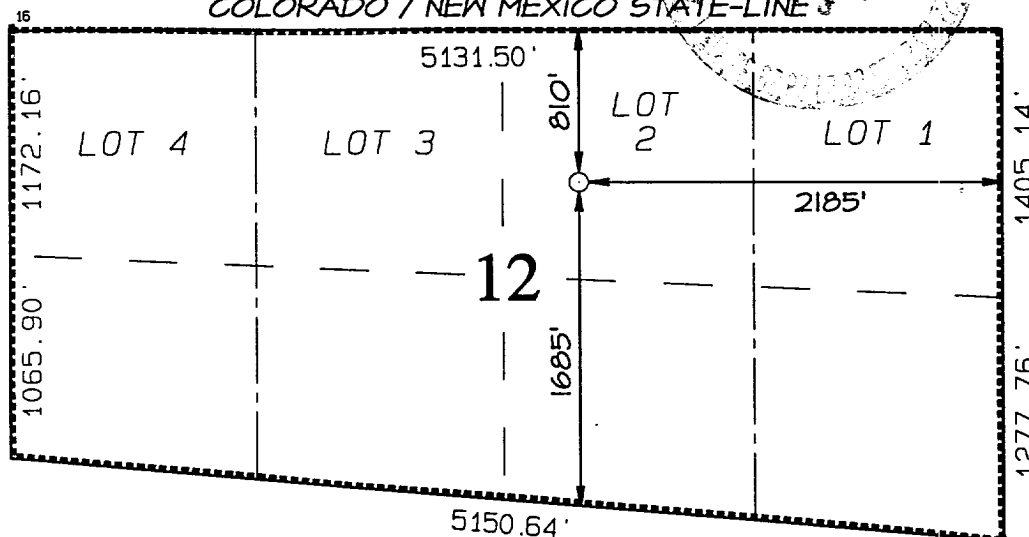
|                    |               |                 |              |         |                       |                           |                       |                        |                    |
|--------------------|---------------|-----------------|--------------|---------|-----------------------|---------------------------|-----------------------|------------------------|--------------------|
| UL or lot no.<br>J | Section<br>12 | Township<br>32N | Range<br>12W | Lot Idn | Feet from the<br>1685 | North/South line<br>SOUTH | Feet from the<br>2185 | East/West line<br>EAST | County<br>SAN JUAN |
|--------------------|---------------|-----------------|--------------|---------|-----------------------|---------------------------|-----------------------|------------------------|--------------------|

<sup>11</sup> Bottom Hole Location If Different From Surface

|               |         |          |       |         |               |                  |               |                |        |
|---------------|---------|----------|-------|---------|---------------|------------------|---------------|----------------|--------|
| UL or lot no. | Section | Township | Range | Lot Idn | Feet from the | North/South line | Feet from the | East/West line | County |
|---------------|---------|----------|-------|---------|---------------|------------------|---------------|----------------|--------|

|   |                                    |                                       |                         |
|---|------------------------------------|---------------------------------------|-------------------------|
| <sup>12</sup> Dedicated Acres<br>336.00 | <sup>13</sup> Joint or Infill<br>Y | <sup>14</sup> Consolidation Code<br>C | <sup>15</sup> Order No. |
|---|------------------------------------|---------------------------------------|-------------------------|

NO ALLOWABLE WILL BE ASSIGNED TO THIS COMPLETION UNTIL ALL INTERESTS HAVE BEEN CONSOLIDATED OR A NON-STANDARD UNIT HAS BEEN APPROVED BY THE DIVISION



<sup>17</sup> OPERATOR CERTIFICATION

I hereby certify that the information contained herein is true and complete to the best of my knowledge and belief

*Paul C. Thompson*  
Signature  
Paul C. Thompson  
Printed Name  
Agent  
Title  
6/12/01  
Date

<sup>18</sup> SURVEYOR CERTIFICATION

I hereby certify that the well location shown on this plat was plotted from field notes of actual surveys made by me or under my supervision and that the same is true and correct to the best of my belief.

JUNE 1, 2001  
Date of Survey  
Signature and Seal of Professional Surveyor  
NEALE C. EDWARDS  
NEW MEXICO  
6857  
Certificate 6857

**GREAT WESTERN DRILLING J.E. DECKER #2B**  
1685' FSL & 2185' FEL, SECTION 12, T32N, R12W, N.M.P.M.  
SAN JUAN COUNTY, NEW MEXICO

