

NEW MEXICO OIL CONSERVATION COMMISSION  
Santa Fe, New Mexico

## NOTICE OF INTENTION TO DRILL OR RECOMPLETE

Notice must be given to the District Office of the Oil Conservation Commission and approval obtained before drilling or recompletion begins. If changes in the proposed plan are considered advisable, a copy of this notice showing such changes will be returned to the sender. Submit this notice in QUINTUPLICATE. One copy will be returned following approval. See additional instructions in Rules and Regulations of the Commission.

Dallas, Texas  
(Place)May 5, 1953  
(Date)OIL CONSERVATION COMMISSION  
SANTA FE, NEW MEXICO

Gentlemen:

You are hereby notified that it is our intention to commence the (Drilling) (Recompletion) of a well to be known as

Southern Union Gas Company  
(Company or Operator)F. T. Hillstrom  
(Lease)Well No. 1, in N (Unit)located 1650 feet from the West line and 990 feet from theSouth line of Section 35, T 32-N, R 12-W, NMPM.(GIVE LOCATION FROM SECTION LINE) Blanco Pool, San Juan County

D	C	B	A
E	F	G	H
L	K	J	I
M	N	O	P

If State Land the Oil and Gas Lease is No.....

If patented land the owner is F. T. Hillstrom (Communitized Unit)  
Address (See below)We propose to drill well with drilling equipment as follows: Rotary to top of Point  
Lookout and pay sand by natural gas methodThe status of plugging bond is Blanket Bond

Drilling Contractor .....

We intend to complete this well in the Point Lookout  
formation at an approximate depth of 5150 to a T. D. 5100 feet.

## CASING PROGRAM

We propose to use the following strings of Casing and to cement them as indicated:

Size of Hole	Size of Casing	Weight per Foot	New or Second Hand	Depth	Sacks Cement
	<u>10 3/4"</u>	<u>51#</u>	<u>New</u>	<u>150'</u>	<u>75</u>
	<u>7"</u>	<u>20#</u>	<u>"</u>	<u>5150'</u>	<u>200</u>

If changes in the above plans become advisable we will notify you immediately.

ADDITIONAL INFORMATION (If recompletion give full details of proposed plan of work.)

Well will be shot with 1000 quarts of Nitro Glycerine from 5150' to 5100Communitized Unit; W<sub>1/2</sub> Sec. 35, T-32-N R12-W, N.M.P.M.E. P. N. G. - S. F. 078116 - N<sub>1/2</sub>, NW<sub>1/4</sub>, W<sub>1/2</sub>, SW<sub>1/4</sub>S. U. G. - Fee - F. T. Hillstrom, E<sub>1/2</sub>, SW<sub>1/4</sub>, SE<sub>1/4</sub>, NW<sub>1/4</sub>, Fee-C. Dial-SW<sub>1/4</sub>, NW<sub>1/4</sub>Approved 5 - 9, 19 53  
Except as follows:

Sincerely yours,

SOUTHERN UNION GAS COMPANY  
(Company or Operator)By Van Thompson  
Van ThompsonPosition.....  
Send Communications regarding well to.....

Name.....

Address.....

OIL CONSERVATION COMMISSION

By Conroy C. Arnold

Title .....

Company..... Southern Union Gas Company.....

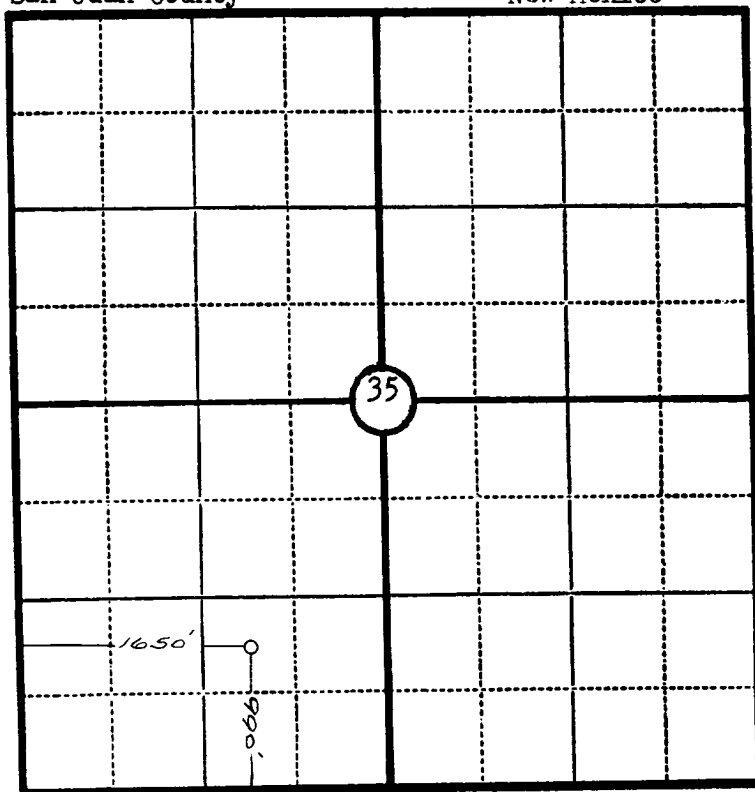
Lease..... P. T. HILSDEN..... Well No. 1.....

Sec. 35....., T. 32 N....., R. 12 W., N.M.P.M.....

Location..... 990' from the South line and 1650' from  
the West line.

San Juan County

New Mexico



Scale—4 inches equal 1 mile.

This is to certify that the above plat was prepared from field notes of actual surveys made by me or under my supervision and that the same are true and correct to the best of my knowledge and belief.

Seal:

Registered Professional  
Engineer and Land Surveyor.

Ernest V. Echols  
N. Mex. Reg. No. 1545

Surveyed March 24, 1953



# OIL CONSERVATION COMMISSION

## AZTEC DISTRICT OFFICE

No. Copies Received 6

### DISTRIBUTION

	NO. FURNISHED	
Operator	<u>1</u>	
Santa Fe	<u>1</u>	
Proration Office		
State Land Office	<u>1</u>	
U. S. G. S.	<u>2</u>	
Transporter		
File	<u>1</u>	<input checked="" type="checkbox"/>