

NEW MEXICO OIL CONSERVATION COMMISSION
Santa Fe, New Mexico

NOTICE OF INTENTION TO DRILL OR RECOMPLETE

Notice must be given to the District Office of the Oil Conservation Commission and approval obtained before drilling or recompletion begins. If changes in the proposed plan are considered advisable, a copy of this notice showing such changes will be returned to the sender. Submit this notice in QUINTUPLICATE. One copy will be returned following approval. See additional instructions in Rules and Regulations of the Commission.

Farmington, New Mexico

(Place)

January 27, 1955

(Date)

OIL CONSERVATION COMMISSION
SANTA FE, NEW MEXICO

Gentlemen:

You are hereby notified that it is our intention to commence the (Drilling) (Recompletion) of a well to be known as

El Paso Natural Gas Company

(Company or Operator)

Moore

(Lease)

, Well No. **7**, in **A** (Unit) The well is

located **1090** feet from the **North** line and **990** feet from the

East

line of Section **25**, T. **32N**, R. **12W**, NMPM.

(GIVE LOCATION FROM SECTION LINE) **Blanco** Pool, **San Juan** County

If State Land the Oil and Gas Lease is No. **Fee**

If patented land the owner is

Address

We propose to drill well with drilling equipment as follows: **Rotary tools through the Mesa Verde drilling the pay section with gas circulation.**

The status of plugging bond is **Statewide**

Drilling Contractor **Company tools**

We intend to complete this well in the **Mesa Verde** formation at an approximate depth of **5525** feet.

CASING PROGRAM

We propose to use the following strings of Casing and to cement them as indicated:

Size of Hole	Size of Casing	Weight per Foot	New or Second Hand	Depth	Sacks Cement
12 3/4	9 5/8	25.4	New	170	125
8 3/4	7	20	New	4735	500

If changes in the above plans become advisable we will notify you immediately.

ADDITIONAL INFORMATION (If recompletion give full details of proposed plan of work.) **It is intended to sand-oil fracture the Cliff House and Point Lookout formations.**

Communitization will be filed as soon as possible.

The N/2 of Section 25 is dedicated to this well.

NW/4, W/2 NE/4 SF 078147. E/2 NE/4 Delhi.

Approved **1-28**, 19 **55**
Except as follows:

Sincerely yours,

El Paso Natural Gas Company

(Company or Operator)

By **Ernest W. Walsh**

Position **Petroleum Engineer**

Send Communications regarding well to

Name **E. J. Coel**

Address **Box 997**

Farmington, New Mexico

OIL CONSERVATION COMMISSION

By **Ernest W. Walsh**

Title **Oil and Gas Inspector Dist. #3.**

COMPANY EL PASO NATURAL GAS COMPANY

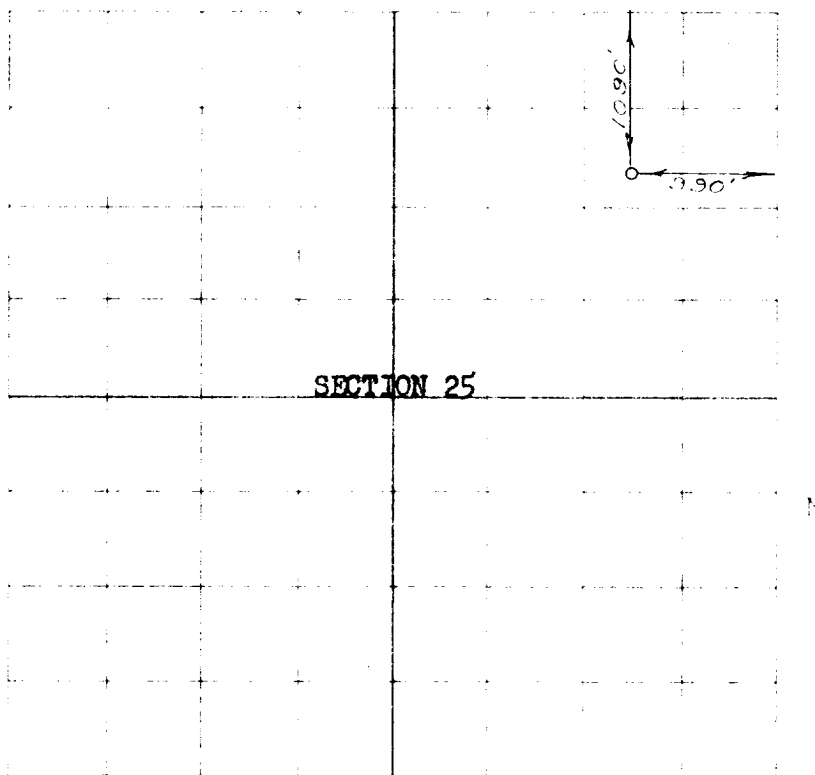
Well Name & No. MOORE NO. 7 Lease No. FEE

Location 1090 FEET FROM THE NORTH LINE, 990 FEET FROM THE EAST LINE

being in NE/4 OF THE NE/4

Sec. 25, T 32, R 12, N.M.P.M. SAN JUAN COUNTY, NEW MEXICO

Ground Location 642442



Surveyed by George W. Walker

Surveyed OCTOBER 31 19 54

This is to certify that the above plat was prepared from the notes of actual survey made by me or under my supervision and that such notes are true and correct to the best of my knowledge and belief.

G. W. Walker
Registered Professional
Engineer and Land Surveyor

Seal

Farmington, New Mexico

N/2, Section 25 320² acres

OIL CONSERVATION COMMISSION		
AZTEC DISTRICT OFFICE		
No. Copies Received <u>2</u>		
DISTRIBUTION		
	NO. FURNISHED	
Operator	<u>3</u>	
Santa Fe	<u>1</u>	
Proration Office		
State Land Office		
U. S. G. S.	<u>2</u>	
Transporter		
File	<u>1</u>	<input checked="" type="checkbox"/>