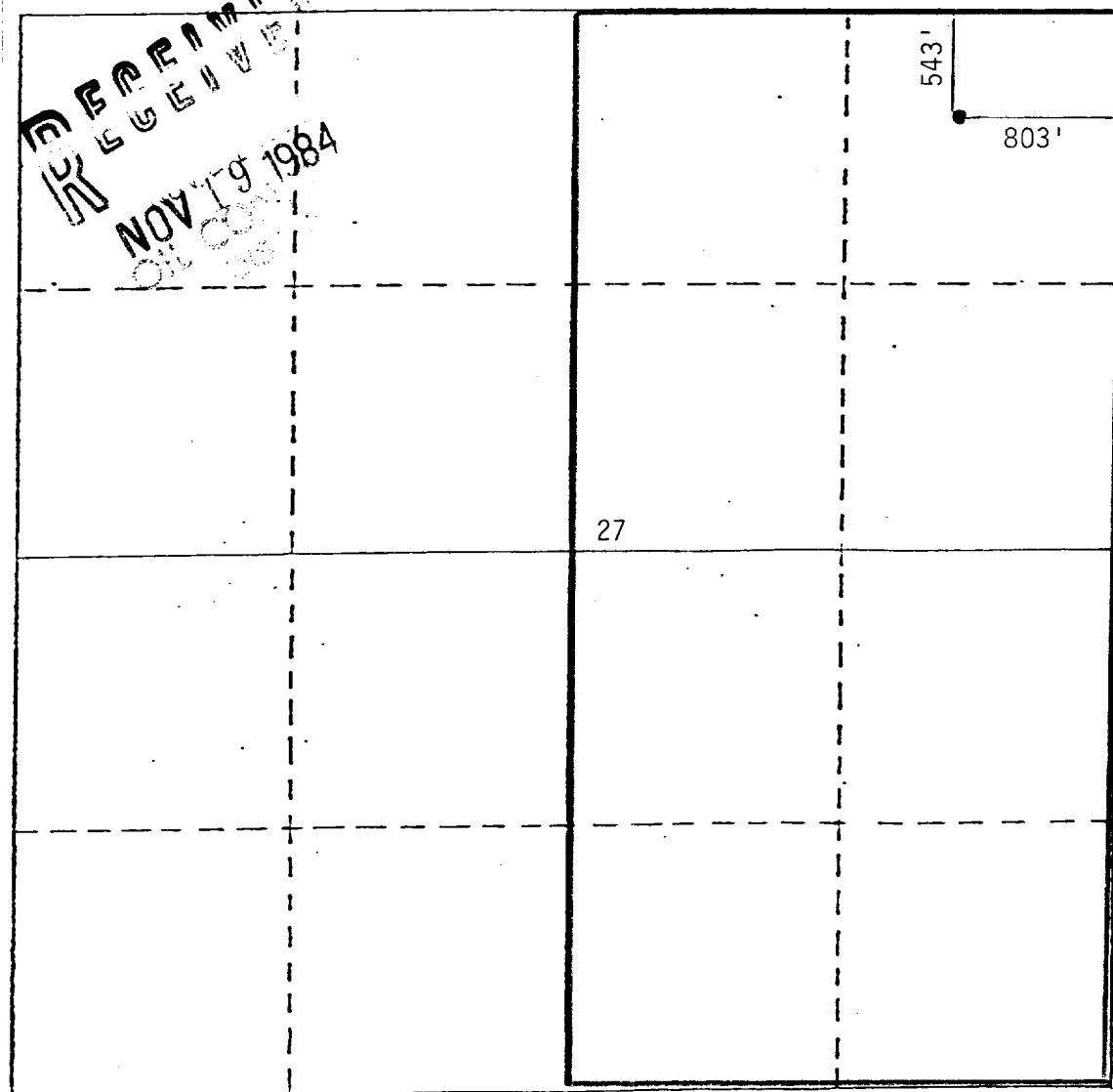


Operator Union Texas Petroleum Corporation		Lease Payne		Well No. 7
Unit Letter A	Section 27	Township 32 North	Range 10 West	County San Juan
Actual Footage Location of Well: 543 feet from the North line and 803 feet from the East line				
Ground Level Elev. 6894	Producing Formation Fruitland Basil Coal	Pool Cedar Hill	Dedicated Acreage: E/2 314.25	

1. Outline the acreage dedicated to the subject well by colored pencil or hatchure marks on the plat below.
  2. If more than one lease is dedicated to the well, outline each and identify the ownership thereof (both as to working interest and royalty).
  3. If more than one lease of different ownership is dedicated to the well, have the interests of all owners been consolidated by communitization, unitization, force-pooling, etc?
- ☐ Yes ☒ No If answer is "yes," type of consolidation \_\_\_\_\_

If answer is "no," list the owners and tract descriptions which have actually been consolidated. (Use reverse side of this form if necessary.) Union Texas Exploration

No allowable will be assigned to the well until all interests have been consolidated (by communitization, unitization, forced-pooling, or otherwise) or until a non-standard unit, eliminating such interests, has been approved by the Division.



#### CERTIFICATION

I hereby certify that the information contained herein is true and complete to the best of my knowledge and belief.

*Rudy D. Motto*  
Name

Rudy D. Motto

Position

Area Operations Manager

Company

Union Texas Petroleum Corp.

Date

November 16, 1984

I hereby certify that the well location shown on this plat was plotted from the notes of actual surveys made by me under my supervision, and that the same is true and correct to the best of my knowledge.

Date Surveyed

January 31, 1984

Registered Professional Engineer  
and/or Land Surveyor

5992

Certificate No.