

May 8, 1985

Mr. Gilbert Quintana  
New Mexico Oil Conservation Division  
P. O. Box 2088  
Santa Fe, NM 87501

File: DDL-506-400.1

Application for Directional Drilling  
Gallegos Canyon Unit No. 236R  
SE/SE Section 14, T28N, R12W  
San Juan County, New Mexico *R12W*

Amoco Production Company hereby requests approval to directionally drill the Gallegos Canyon Unit No. 236R. The proposed surface location is 515' FSL x 770' FEL, Section 14, T28N, ~~R12W~~. The proposed bottom hole location is 1850' FSL x 1190' FEL Section 14, T28N, R12W.

The reason the subject well is being deviated is to avoid the surface owner's cultivated fields.

Sincerely,

Original Signed  
**W. J. Holcomb**  
by **BDS**

LJM/ct

Attachments

✓ cc: Mr. Ernie Busch  
New Mexico Oil Conservation Division  
1000 Rio Brazos Road  
Aztec, NM 87410

cc: R. J. Criswell  
Rm. AB 1152

AM17

**RECEIVED**

MAY 09 1985

**OIL CON. DIV.**  
**DIST. 3**

RECEIVED  
MAY 19 1964  
U.S. AIR FORCE

RECEIVED  
MAY 19 1964  
U.S. AIR FORCE

RECEIVED  
MAY 19 1964  
U.S. AIR FORCE

All distances must be from the outer boundaries of the Section.

AMOCO PRODUCTION COMPANY			LEASE		Well No.
			GALLEGOS CANYON UNIT		236R
Unit Letter	Section	Township	Range	County	
P	14	28N	13W	San Juan	
Actual Footage Location of Well:					
515		feet from the	South	line and	770
				feet from the	East
Ground Level Elev:	Producing Formation		Pool	Dedicated Acreage:	
5781	Dakota & Gallup		Basin Dakota/Totah Gallup Ext.	320/80	
		Acres			

1. Outline the acreage dedicated to the subject well by colored pencil or hachure marks on the plat below.
2. If more than one lease is dedicated to the well, outline each and identify the ownership thereof (both as to working interest and royalty).
3. If more than one lease of different ownership is dedicated to the well, have the interests of all owners been consolidated by communitization, unitization, force-pooling, etc?

☒ Yes ☐ No If answer is "yes," type of consolidation Unitized

If answer is "no," list the owners and tract descriptions which have actually been consolidated. (Use reverse side of this form if necessary.)

No allowable will be assigned to the well until all interests have been consolidated (by communitization, unitization, forced-pooling, or otherwise) or until a non-standard unit, eliminating such interests, has been approved by the Commission.

		<p>RECEIVED FEB 18 1985 BUREAU OF LAND MANAGEMENT FARMINGTON RESOURCE AREA</p>
<p>Sec. 14</p>		
<p>RECEIVED MAY 09 1985 OIL CONSERVATION DIV. 1 Dist. 3</p>		<p>14</p>
<p>770'</p>		

Staked Surface Location

CERTIFICATION	
I hereby certify that the information contained herein is true and complete to the best of my knowledge and belief.	
Name	Original Signed By
Position	D. D. Lawson District Administrative Supervisor
Company	Amoco Production Company
Date	2/5/85
I hereby certify that the well location shown on this plat was plotted from field notes of actual surveys made by me or under my supervision, and that the same is true and correct to the best of my knowledge and belief.	
Date Surveyed	January 18, 1985
Registered Professional Engineer and Land Surveyor	
Fred H. Kerr, Jr.	
Certificate No. 1000	

All distances must be from the outer boundaries of the Section.

Operator <b>Amoco Production Co.</b>		Lease <b>Gallegos Canyon Unit</b>		Well No. <b>236R</b>
Unit Letter <b>I</b>	Section <b>14</b>	Township <b>28N</b>	Range <b>13W</b>	County <b>San Juan</b>
Actual Location of Well: <b>1850</b> feet from the <b>South</b> line and <b>1190</b> feet from the <b>East</b> line				
Ground Level Elev. <b>5781</b>	Producing Formation <b>Dakota &amp; Gallup</b>	Pool <b>Basin DAKota/Totah Gallup</b>	Dedicated Acreage: <b>320/80</b> Acres	

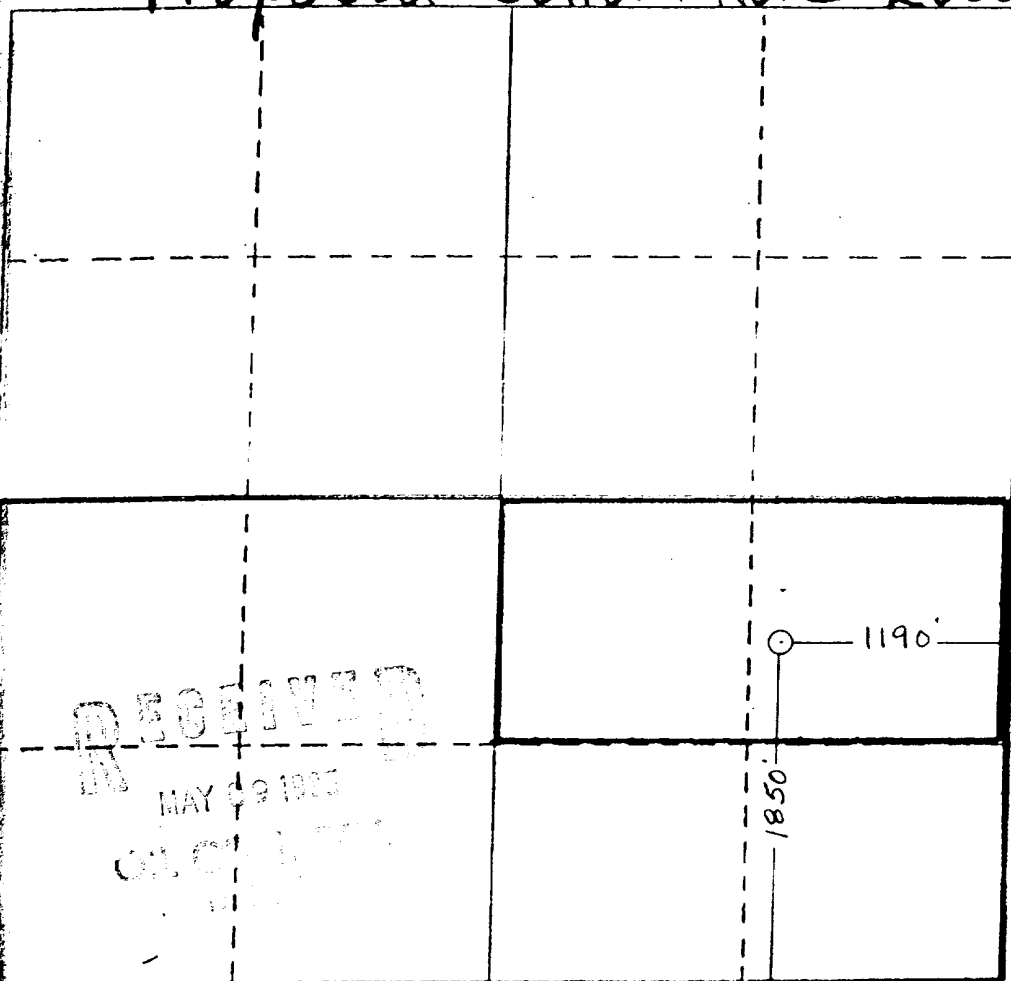
1. Outline the acreage dedicated to the subject well by colored pencil or hatchure marks on the plat below.
2. If more than one lease is dedicated to the well, outline each and identify the ownership thereof (both as to working interest and royalty).
3. If more than one lease of different ownership is dedicated to the well, have the interests of all owners been consolidated by communitization, unitization, force-pooling, etc?

☒ Yes ☐ No If answer is "yes," type of consolidation Unitized

If answer is "no," list the owners and tract descriptions which have actually been consolidated. (Use reverse side of this form if necessary.)

No allowable will be assigned to the well until all interests have been consolidated (by communitization, unitization, forced-pooling, or otherwise) or until a non-standard unit, eliminating such interests, has been approved by the Division.

**Proposed Bottom Hole Location**



**RECEIVED**  
MAY 09 1985  
OIL CONSERVATION DIVISION

CERTIFICATION

I hereby certify that the information contained herein is true and complete to the best of my knowledge and belief.

**B. D. Shaw**

Name

**Adm. Supervisor**

Position

Company

**5-8-85**

Date

I hereby certify that the well location shown on this plat was plotted from field notes of actual surveys made by me or under my supervision, and that the same is true and correct to the best of my knowledge and belief.

Date Surveyed

Registered Professional Engineer and/or Land Surveyor

Certificate No.

0 500 1000 1500 2000 2500 3000 3500 4000 4500 5000 5500 6000 6500 7000 7500 8000 8500 9000 9500 10000

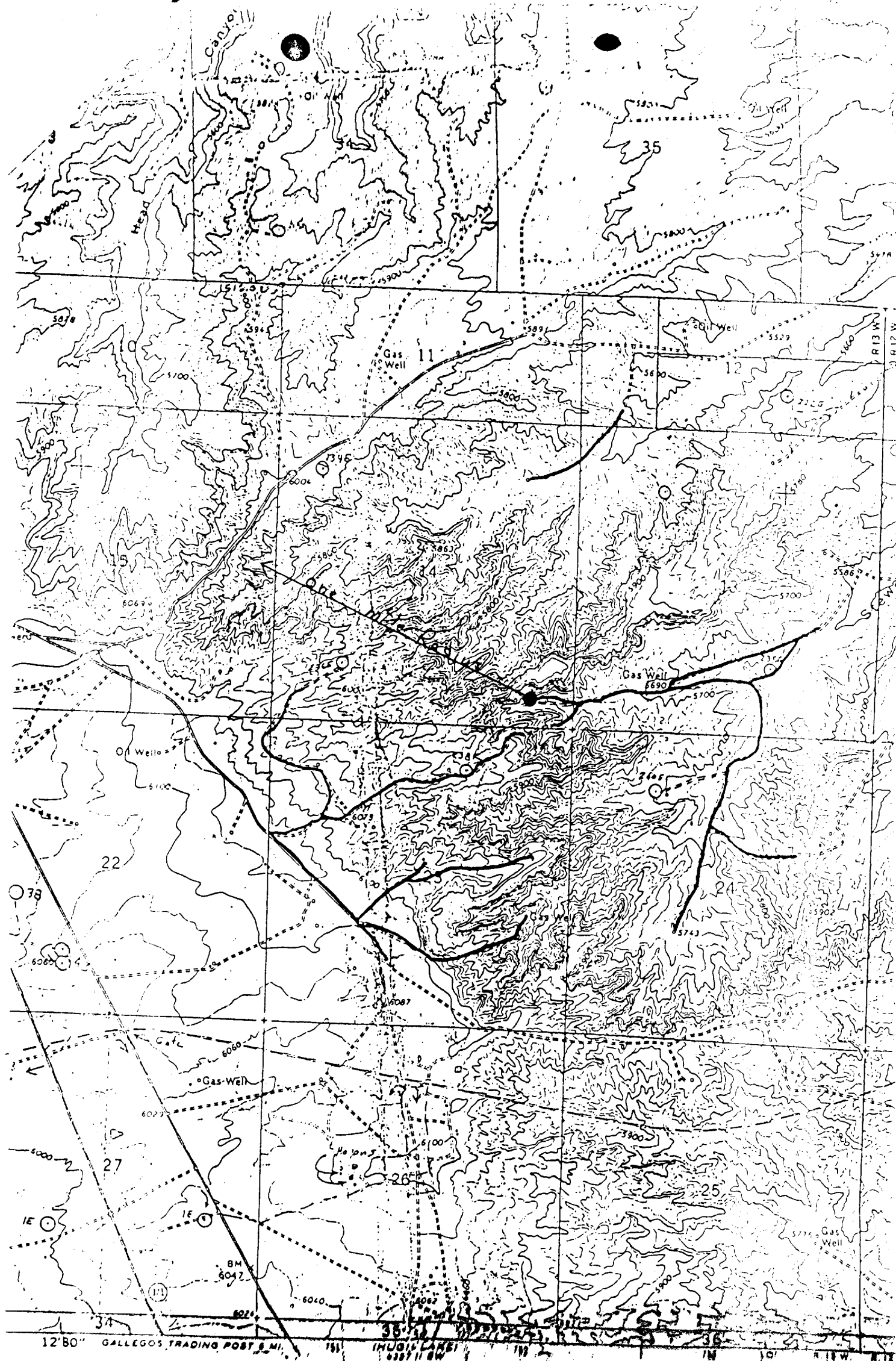


Exhibit B

VICINITY MAP FOR  
 AMOCO PRODUCTION COMPANY #236R GALLEGOS CANYON UNIT  
 5157SL 7701FEL Sec. 14-T23N-R13W  
 SAN JUAN COUNTY, NEW MEXICO

NATIONAL MEAN SEA LEVEL DATUM OF 1929