

NO. OF COPIES RECEIVED	
DISTRIBUTION	
SANTA FE	
FILE	
U.S.G.S.	
LAND OFFICE	
OPERATOR	

# NEW MEXICO OIL CONSERVATION COMMISSION

38-148-96432  
Form O-101  
Revised 1-1-65

5A. Indicate Type of Lease  
STATE ☒ FILL ☐  
5. State Oil & Gas Lease No.

## APPLICATION FOR PERMIT TO DRILL, DEEPEN, OR PLUG BACK

1a. Type of Work		7. Unit Agreement Name	
b. Type of Well OIL WELL <input type="checkbox"/> GAS WELL <input checked="" type="checkbox"/> OTHER <input type="checkbox"/> DRILL <input checked="" type="checkbox"/> DEEPEN <input type="checkbox"/> PLUG BACK <input type="checkbox"/> SINGLE ZONE <input checked="" type="checkbox"/> MULTIPLE ZONE <input type="checkbox"/>		8. Farm or Lease Name State of N.M. "0"	
2. Name of Operator Amoco Production Co.		9. Well No. 1	
3. Address of Operator 501 Airport Drive, Farmington, N M 87401		10. Field and Pool, or Wildcat Basin Dakota	
4. Location of Well UNIT LETTER A LOCATED 1020 FEET FROM THE North LINE AND 1310 FEET FROM THE East LINE OF SEC. 36 TWP. 30N RGE. 9W NMPM		12. County San Juan	
11. Elevations (Show whether DF, RT, etc.) 5753' GR		19. Proposed Depth 7086'	19A. Formation Basin Dakota
21A. Kind & Status Plug. Bond Statewide		21B. Drilling Contractor unknown	20. Rotary or C.T. Rotary
22. Approx. Date Work will start As soon as Permitted			

## PROPOSED CASING AND CEMENT PROGRAM

SIZE OF HOLE	SIZE OF CASING	WEIGHT PER FOOT	SETTING DEPTH	SACKS OF CEMENT	EST. TOP
12-1/4"	9-5/8"	32.3#, H-40	300'	300 SX	surface
8-3/4"	7"	20#, K-55	2840'	542 SX	surface
6-1/4"	4-1/2"	10.5#, K-55	7086'	606 SX	2500'

Amoco proposes to drill the above well to further develop the Basin Dakota reservoir. The well will be drilled to the surface casing point using native mud. The well will then be drilled to TD with a low solids nondispersed mud system. Completion design will be based on open hole logs. Copy of all logs will be filed upon completion. Amoco's standard blowout prevention will be employed; see attached drawing for blowout preventer design. Upon completion the well be cleaned and the reserve pit filled and leveled. The gas from this well is dedicated to El Paso Natural Gas Co.

APPROVAL EXPIRES 12-20-85  
UNLESS DRILLING IS COMMENCED.  
SPUD NOTICE MUST BE SUBMITTED  
WITHIN 10 DAYS.

RECEIVED  
JUN 20 1985  
OIL CON. DIV.  
DIST. 3

ABOVE SPACE DESCRIBE PROPOSED PROGRAM: IF PROPOSAL IS TO DEEPEN OR PLUG BACK, GIVE DATA ON PRESENT PRODUCTION AND PROPOSED PROGRAM.

I hereby certify that the information above is true and complete to the best of my knowledge and belief.

By BDS Shaw Title Adm. Supervisor Date 6-14-85

APPROVED BY [Signature] TITLE SUPERVISOR DISTRICT #3 DATE JUN 20 1985  
REVISIONS OF APPROVAL, IF ANY:

NEW MEXICO OIL CONSERVATION COMMISSION  
WELL LOCATION AND ACREAGE DEDICATION PLAT

Form C-102  
Supersedes C-128  
Effective 1-1-65

All distances must be from the outer boundaries of the Section.

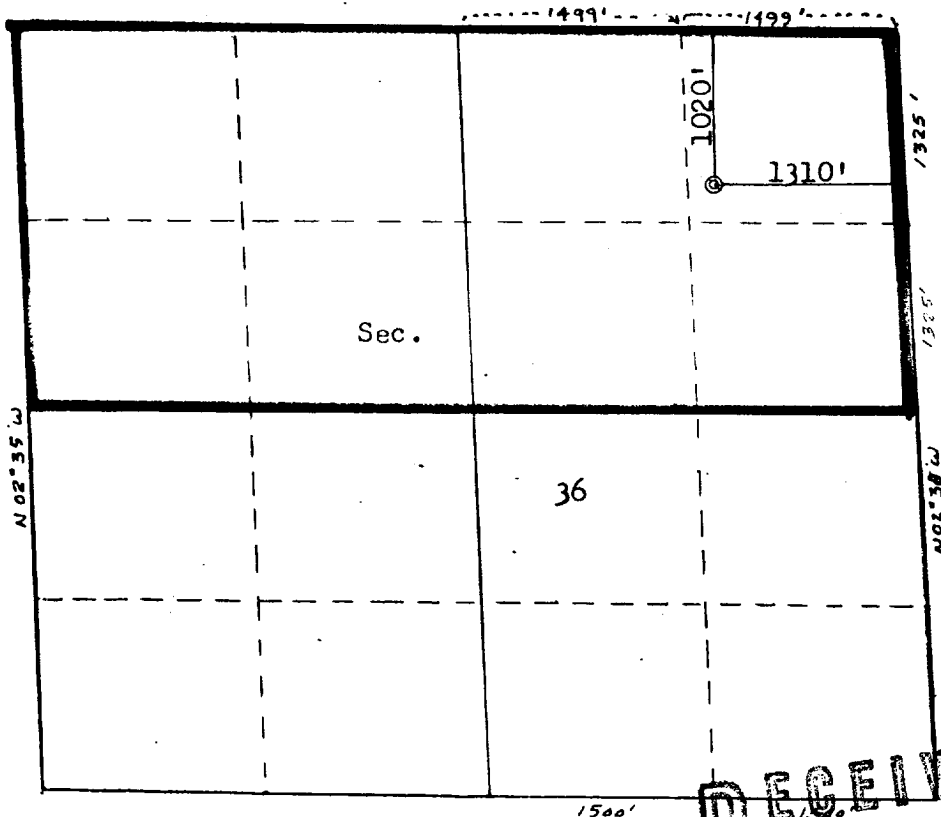
Operator <b>AMOCO PRODUCTION COMPANY</b>			Lease <b>STATE OF NEW MEXICO "0"</b>		Well No. <b>1</b>
Unit Letter <b>A</b>	Section <b>36</b>	Township <b>30N</b>	Range <b>9W</b>	County <b>San Juan</b>	
Actual Footage Location of Well: <b>1020</b> feet from the <b>North</b> line and <b>1310</b> feet from the <b>East</b> line					
Ground Level Elev: <b>5753</b>	Producing Formation <b>Dakota</b>		Pool <b>Basin Dakota</b>		Dedicated Acreage: <b>320</b> Acres

1. Outline the acreage dedicated to the subject well by colored pencil or hachure marks on the plat below.
2. If more than one lease is dedicated to the well, outline each and identify the ownership thereof (both as to working interest and royalty).
3. If more than one lease of different ownership is dedicated to the well, have the interests of all owners been consolidated by communitization, unitization, force-pooling, etc?

☐ Yes ☐ No If answer is "yes," type of consolidation \_\_\_\_\_

If answer is "no," list the owners and tract descriptions which have actually been consolidated. (Use reverse side of this form if necessary.) \_\_\_\_\_

No allowable will be assigned to the well until all interests have been consolidated (by communitization, unitization, forced-pooling, or otherwise) or until a non-standard unit, eliminating such interests, has been approved by the Commission.



CERTIFICATION

I hereby certify that the information contained herein is true and complete to the best of my knowledge and belief.

**B. D. Shaw**  
Name  
B. D. Shaw  
Position  
Adm. Supervisor  
Company  
Amoco Production Co.  
Date  
6-14-85

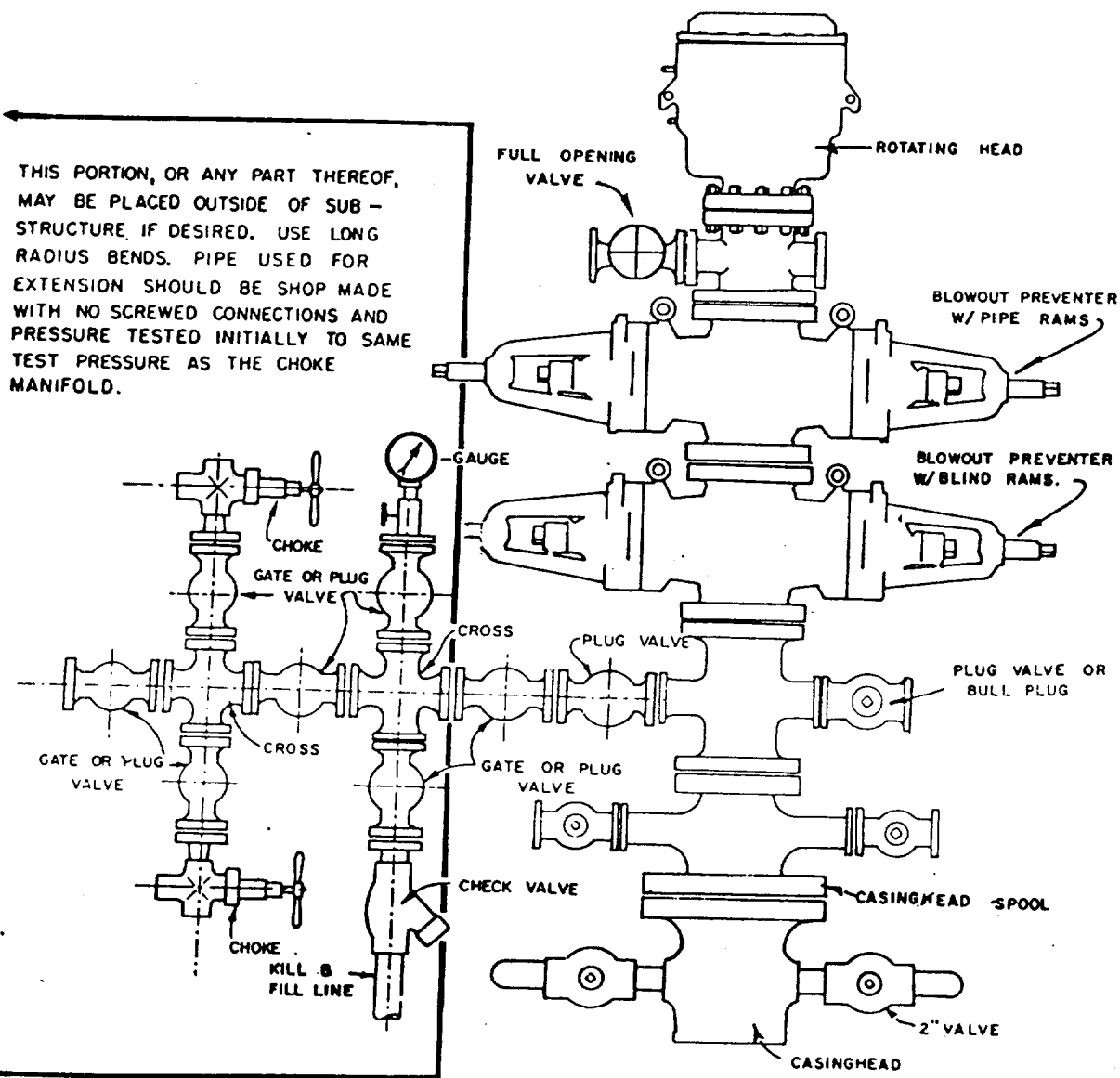
I hereby certify that the well location shown on this plat was plotted from field notes of actual surveys made by me or under my supervision, and that the same is true and correct to the best of my knowledge and belief.

RECEIVED  
JUN 20 1985  
OIL CON. DIV.  
DIST. 3

Date Surveyed <b>March 21 1985</b>
Registered Professional Engineer and Land Surveyor <b>Fred B. Kertel</b>
Certificate No. <b>3950</b>

Scale: 1"=1320'

1. Blowout Preventers and Master Valve to be fluid operated, and all fittings must be in good condition.
2. Equipment through which bit must pass shall be as large as the inside diameter of the casing that is being drilled through.
3. Nipple above Blowout Preventer shall be same size or larger than BOP being drilled through.
4. All fittings to be flanged.
5. Omsco or comparable safety valve must be available on rig floor at all times with proper connection or sub. The I.D. of safety valve should be as great as I.D. of tool joints of drill pipe, or at least as great as I.D. of drill collars.



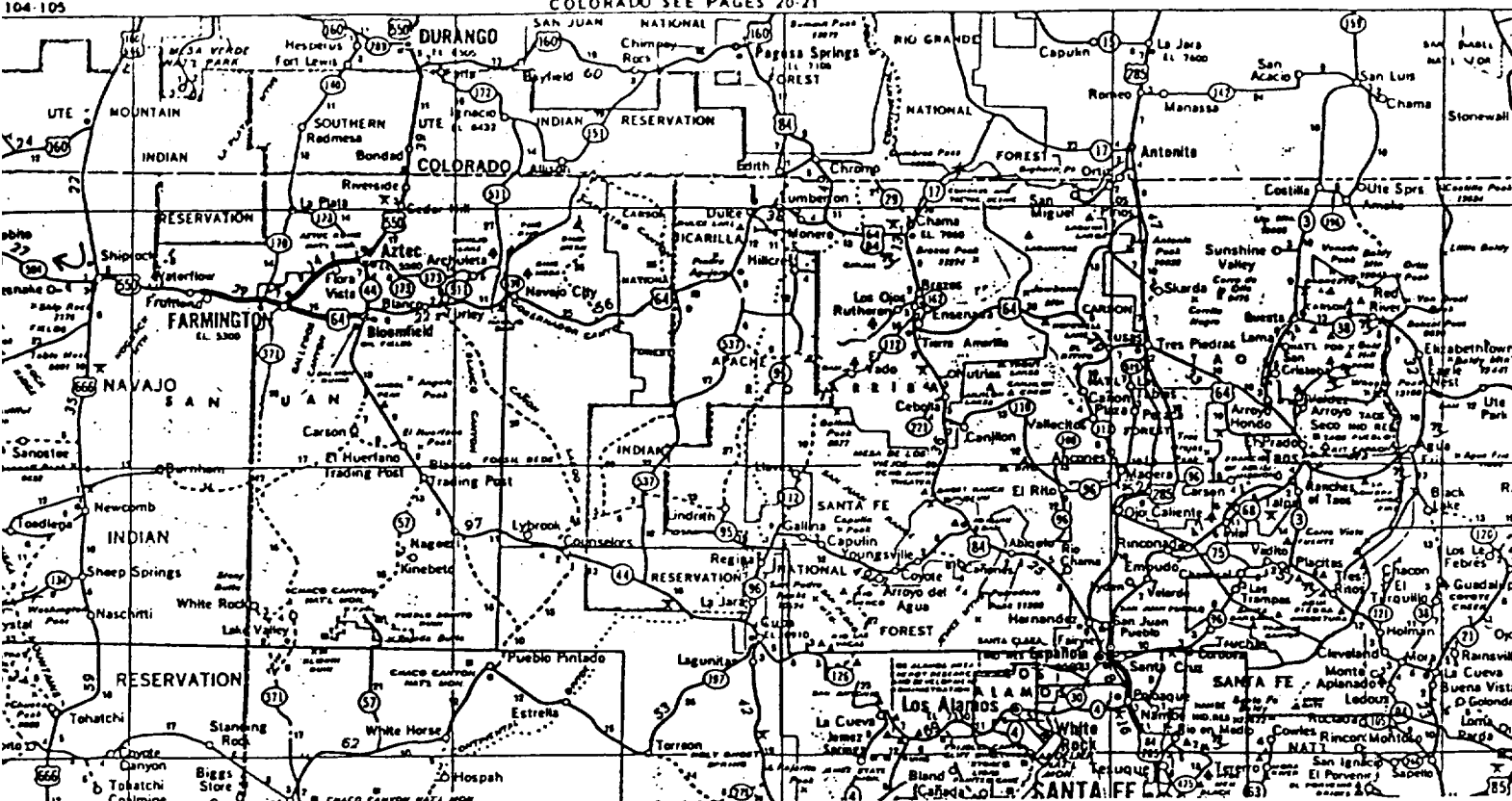
## BLOWOUT PREVENTER HOOKUP

API Series # 900

EXHIBIT D-4

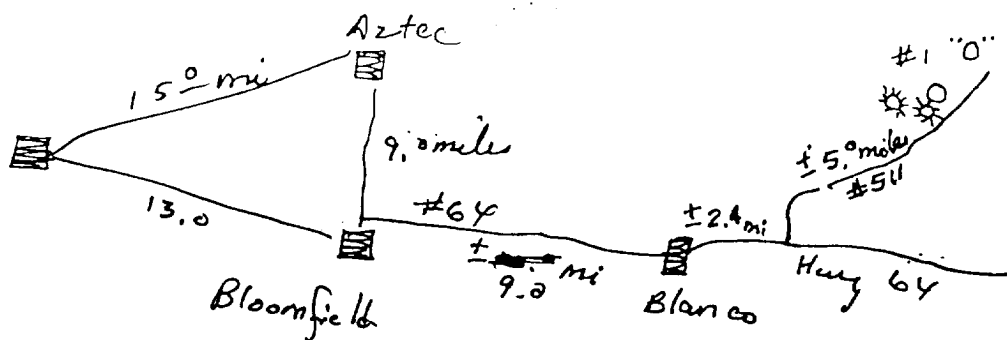
OCTOBER 16, 1969

Operation of BOP by closing both pipe and blind rams will be tested each trip or, on long bit runs, pipe rams will be closed once each 24 hours.



AMOCO PRODUCTION CO. #1 STATE OF NEW MEXICO "O"  
 1020'FNL 1310'FEL Sec. 36-T30N-R9W SAN JUAN COUNTY, NEW MEXICO

RAIL POINT: 153 mi. Gallup, NM  
 MUD POINT: 26 mi. Aztec, NM  
 CEMENT POINT: 30 mi Farmington, NM



East from Blanco about 2.4 miles to Hwy #511  
 thence NE along #511 about 5.0 miles. Left through a gate about 0.1 miles