

NO. OF COPIES RECEIVED	
DISTRIBUTION	
SANTA FE	
FILE	
U.S.G.S.	
LAND OFFICE	
OPERATOR	

NEW MEXICO OIL CONSERVATION COMMISSION

30-045-26433

Form 7-104
Revised 1-1-65

5A. Indicate Type of Lease	
STATE <input checked="" type="checkbox"/>	FEE <input type="checkbox"/>
5. State Oil & Gas Lease No.	

APPLICATION FOR PERMIT TO DRILL, DEEPEN, OR PLUG BACK

1a. Type of Work		7. Unit Agreement Name	
b. Type of Well OIL WELL <input type="checkbox"/> GAS WELL <input checked="" type="checkbox"/> OTHER <input type="checkbox"/>		8. Farm or Lease Name	
2. Name of Operator		State of N.M. "0"	
3. Address of Operator		9. Well No.	
Amoco Production Co.		1E	
501 Airport Drive, Farmington, N M 87401		10. Field and Pool, or Wildcat	
1. Location of Well		Basin Dakota	
UNIT LETTER F LOCATED 1610 FEET FROM THE North LINE		12. County	
1780 FEET FROM THE West LINE OF SEC. 36 TWP. 30N RGE. 9W NMPM		San Juan	
19. Proposed Depth		19A. Formation	
6986'		Dakota	
20. Rotary or C.T.		Rotary	
1. Elevations (Show whether DF, RT, etc.)		21A. Kind & Status Plug. Bond	
5653' GR		Statewide	
21B. Drilling Contractor		22. Approx. Date Work will start	
Unknown		as soon as permitted	

PROPOSED CASING AND CEMENT PROGRAM

SIZE OF HOLE	SIZE OF CASING	WEIGHT PER FOOT	SETTING DEPTH	SACKS OF CEMENT	EST. TOP
12-1/4"	9-5/8"	32.3#, H-40	300'	300sx	surface
8-3/4"	7"	20#, K-55	2740'	523 sx	surface
6-1/4"	4-1/2"	10.5#, K-55	6986'	597 sx	2400'

Amoco proposes to drill the above well to further develop the Basin Dakota reservoir. The well will be drilled to the surface casing point using native mud. The well will then be drilled to TD with a low solids nondispersed mud system. Completion design will be based on open hole logs. Copy of all logs will be filed upon completion. Amoco's standard blowout prevention will be employed; see attached drawing for blowout preventer design. Upon completion the well be cleaned and the reserve pit filled and leveled. The gas from this well is dedicated to El Paso Natural Gas Co.

APPROVAL EXPIRES 12-20-85
UNLESS DRILLING IS COMMENCED.
SPUD NOTICE MUST BE SUBMITTED
WITHIN 10 DAYS.

RECEIVED
JUN 20 1985
OIL CON. DIV.
DIST. 3

BOVE SPACE DESCRIBE PROPOSED PROGRAM: IF PROPOSAL IS TO DEEPEN OR PLUG BACK GIVE DATA ON PRESENT PRODUCTIVE ZONE. GIVE BLOWOUT PREVENTER PROGRAM, IF ANY.

by certify that the information above is true and complete to the best of my knowledge and belief.

BDS Shaw Title Adm. Supervisor Date 6-17-85

(This space for State Use)

ROVED BY Frank J. Oney TITLE SUPERVISOR DISTRICT # 3 DATE JUN 20 1985

DITIONS OF APPROVAL, IF ANY:

NEW MEXICO OIL CONSERVATION COMMISSION
WELL LOCATION AND ACREAGE DEDICATION PLAT

Form C-102
Supersedes C-128
Effective 1-1-65

All distances must be from the outer boundaries of the Section.

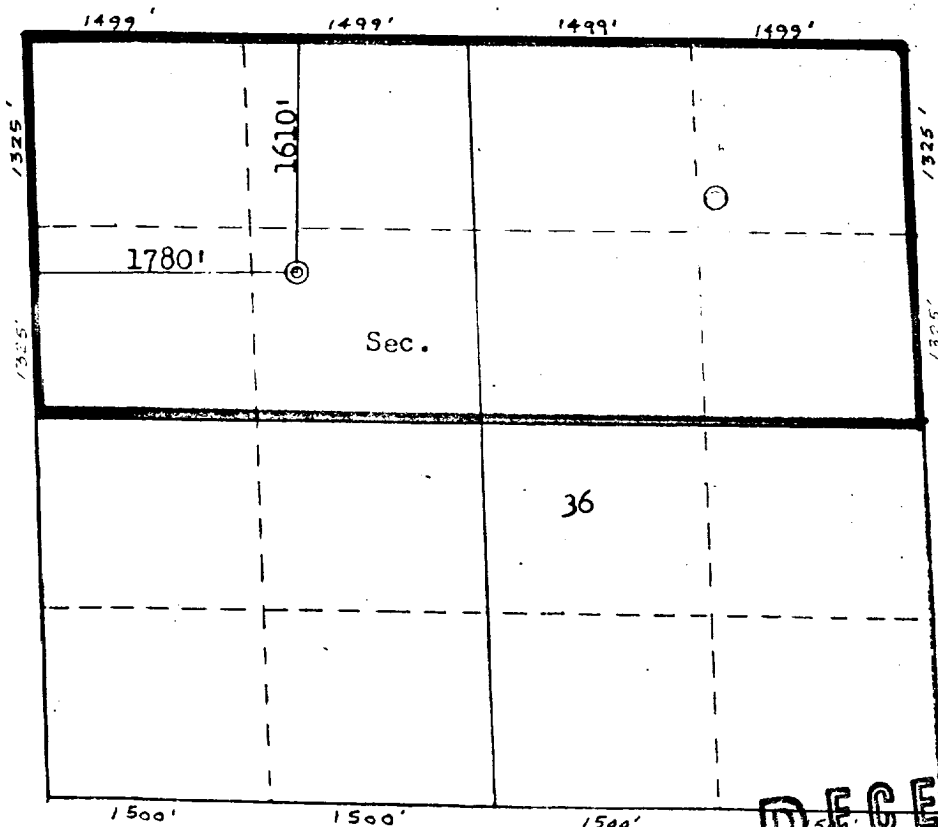
Operator AMOCO PRODUCTION COMPANY			Lease STATE OF NEW MEXICO "O"		Well No. 1 E
Unit Letter F	Section 36	Township 30N	Range 9W	County San Juan	
Actual Footage Location of Well: 1610 feet from the North line and 1780 feet from the West line					
Ground Level Elev: 5653	Producing Formation Dakota		Pool Basin Dakota		Dedicated Acreage: 320 Acres

1. Outline the acreage dedicated to the subject well by colored pencil or hachure marks on the plat below.
2. If more than one lease is dedicated to the well, outline each and identify the ownership thereof (both as to working interest and royalty).
3. If more than one lease of different ownership is dedicated to the well, have the interests of all owners been consolidated by communitization, unitization, force-pooling, etc?

☐ Yes ☐ No If answer is "yes," type of consolidation _____

If answer is "no," list the owners and tract descriptions which have actually been consolidated. (Use reverse side of this form if necessary.) _____

No allowable will be assigned to the well until all interests have been consolidated (by communitization, unitization, forced-pooling, or otherwise) or until a non-standard unit, eliminating such interests, has been approved by the Commission.



CERTIFICATION

I hereby certify that the information contained herein is true and complete to the best of my knowledge and belief.

B. D. Shaw

Name
B. D. Shaw

Position
Adm. Supervisor

Company
Amoco Production Co.

Date
6-14-85

I hereby certify that the well location shown on this plat was plotted from field notes of actual surveys made by me or under my supervision, and that the same is true and correct to the best of my knowledge and belief.

RECEIVED
JUN 20 1985

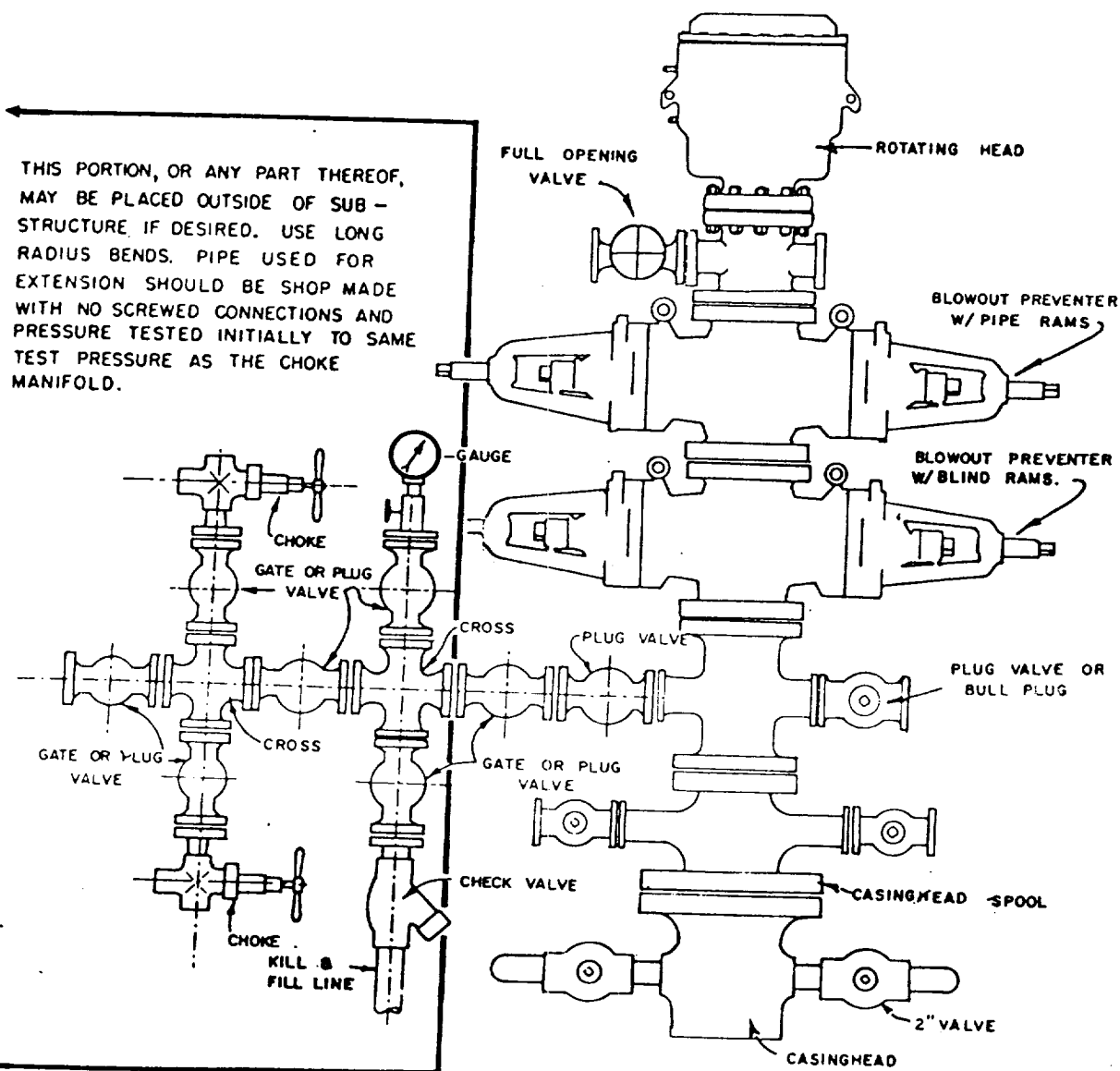
OIL CON. DIV.
DIST. 3

Date
March 20, 1985

Registered Professional Engineer
and Surveyor
Fred B. Kerp
Fred B. Kerp
Certificate No. **3950**

Scale: 1"=1320'

1. Blowout Preventers and Master Valve to be fluid operated, and all fittings must be in good condition.
2. Equipment through which bit must pass shall be as large as the inside diameter of the casing that is being drilled through.
3. Nipple above Blowout Preventer shall be same size or larger than BOP being drilled through.
4. All fittings to be flanged.
5. Omsco or comparable safety valve must be available on rig floor at all times with proper connection or sub. The I.D. of safety valve should be as great as I.D. of tool joints of drill pipe, or at least as great as I.D. of drill collars.



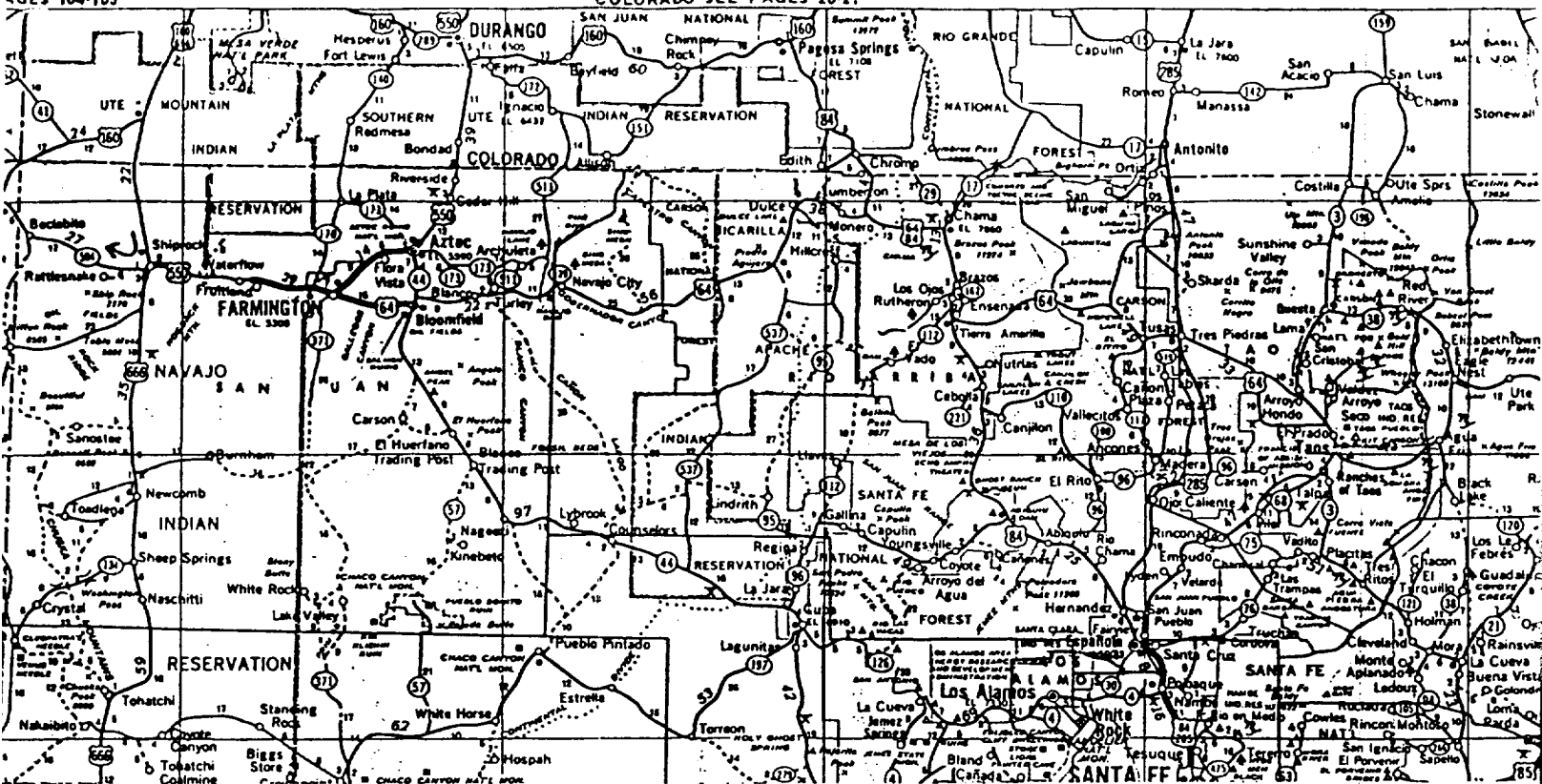
BLOWOUT PREVENTER HOOKUP

API Series # 900

EXHIBIT D-4

OCTOBER 16, 1969

Operation of BOP by closing both pipe and blind rams will be tested each trip or, on long bit runs, pipe rams will be closed once each 24 hours.



AMOCO PRODUCTION CO. #1E STATE OF NEW MEXICO "0"
1610'FNL 1780'FWL Sec. 36-T30N-R9W SAN JUAN COUNTY, NEW MEXICO

RAIL POINT: 153 mi. Gallup, NM
MUD POINT: 26 mi. Aztec, NM
CEMENT POINT: 30 mi. Farmington, NM

