



STATE OF NEW MEXICO		
OIL CONSERVATION COMMISSION		
ALBUQUERQUE DISTRICT OFFICE		
NUMBER OF COPIES RECEIVED		5
DISTRIBUTION		
SANTA FE		1
FILE		2
U.S.G.S.		
LAND OFFICE		
TRANSPORTER	OIL GAS	
PRODUCTION OFFICE		
OPERATOR		1

# NEW MEXICO OIL CONSERVATION COMMISSION

## Well Location and Acreage Dedication Plat

### SECTION A.

Date **May 1, 1961**

Operator **Astec Oil and Gas Co.** Lease **Smith**  
Well No. **2-0** Unit Letter **K** Section **18** Township **29N** Range **13W** NMPM  
Located **1980** Feet From **South** Line, **3300** Feet From **East** Line  
County **San Juan** G. L. Elevation **5224** Dedicated Acreage **85.34** Acres  
Name of Producing Formation **Gallup** Pool **Total**

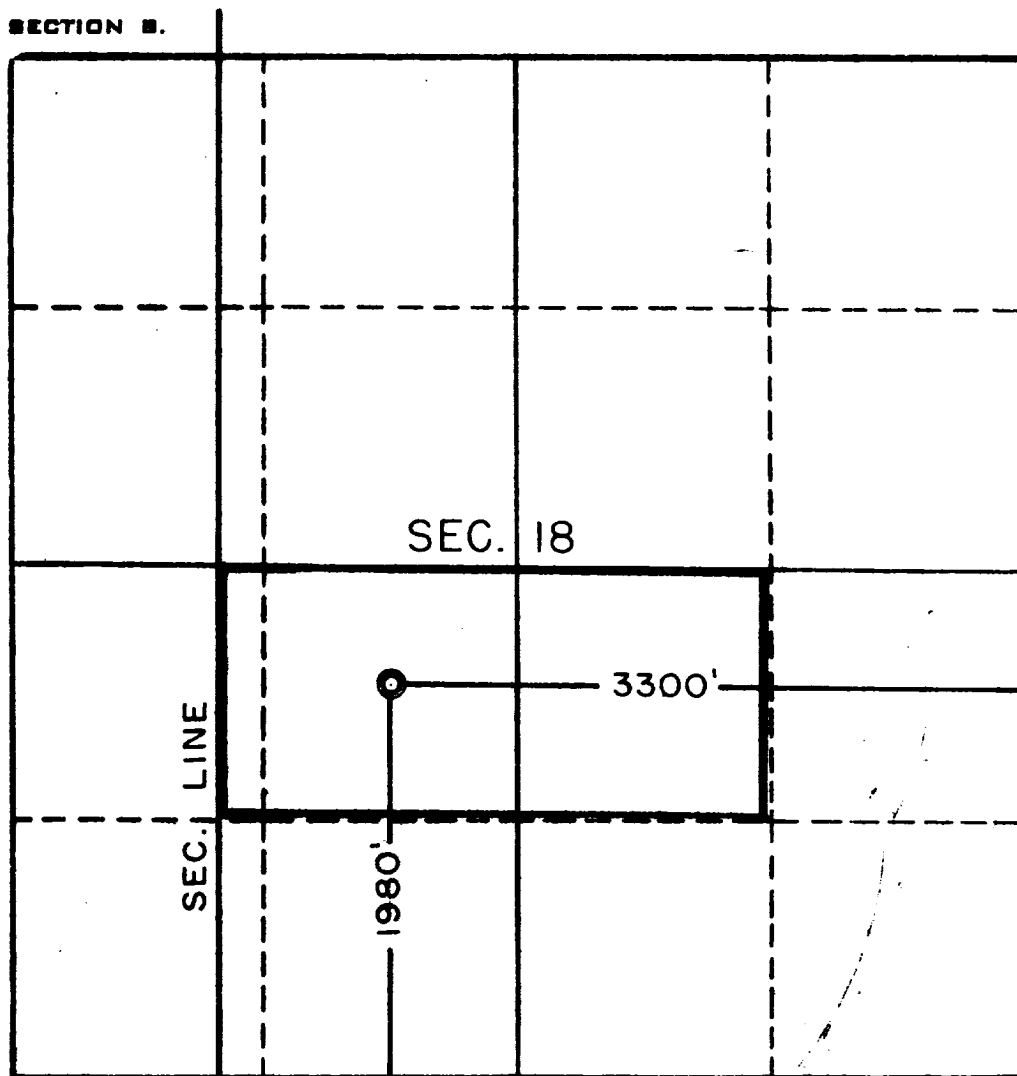
1. Is the Operator the only owner\* in the dedicated acreage outlined on the plat below? Yes **XX** No
2. If the answer to question One is "No," have the interests of all the owners been consolidated by communization agreement or otherwise? Yes \_\_\_\_\_ No \_\_\_\_\_. If answer is "Yes," Type of Consolidation \_\_\_\_\_
3. If the answer to question Two is "No," list all the owners and their respective interests below

OWNER

LAND DESCRIPTION



### SECTION B.



This is to certify that the information in Section A above is true and complete to the best of my knowledge and belief.

**Astec Oil and Gas Company**  
(OPERATOR)

ORIGINAL SIGNED BY JOE C. SALMON

(REPRESENTATIVE)  
**Joe C. Salmon**  
District Superintendent  
Drawer 570, Farmington, N.M.  
(ADDRESS)

This is to certify that the well location shown on the plat in Section B was plotted from field notes of actual surveys made by me or under my supervision and that the same is true and correct to the best of my knowledge and belief.

Date Surveyed **April 17, 1961**

**Four States Engineering Co.**  
FARMINGTON, NEW MEXICO

*Emmett H. Eckert*  
REGISTERED ENGINEER OR  
LAND SURVEYOR

Certificate No. **2090**



STATE OF NEW MEXICO		
OIL CONSERVATION COMMISSION		
ALBUQUERQUE DISTRICT OFFICE		
NUMBER OF COPIES RECEIVED		5
DISTRIBUTION		
SANTA FE	1	-
FILE	2	-
U.S.G.S.		
LAND OFFICE		
TRANSPORTER	1	011
	645	
PROMOTION OFFICE		
OPERATOR	1	