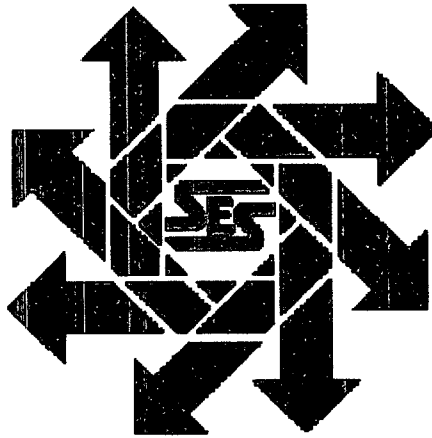


Cleanup Report
Lynx Petroleum
Reed-Sanderson #9 API# 30025041820000
Lea County, New Mexico

L Sec 3 T-20-S R-36-E

May 6, 2002



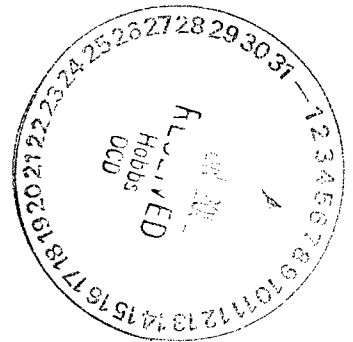
Prepared for:

Lynx Petroleum
3325 Enterprise Drive
Hobbs, New Mexico 88240

By:

Safety & Environmental Solutions, Inc.
703 E. Clinton Suite 103
Hobbs, New Mexico 88240
(505) 397-0510

Lynx-13645
application - pFAC0603937585



Lynx Petroleum Consultants, Inc.

P.O. Box 1708
3325 Enterprise Drive
Hobbs, New Mexico 88241

505 392-6950

Fax: 505 392-7886

June 4, 2002

Oil Conservation Division
1625 N. French Dr.
Hobbs, NM 88240

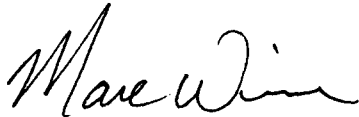
RE: Reed Sanderson Unit #9 Cleanup Report

Dear Mr. Johnson,

Enclosed please find your copy of the subject cleanup report. If you have any questions, please call.

Sincerely,

LYNX PETROLEUM CONSULTANTS, INC.



Marc Wise

Enc

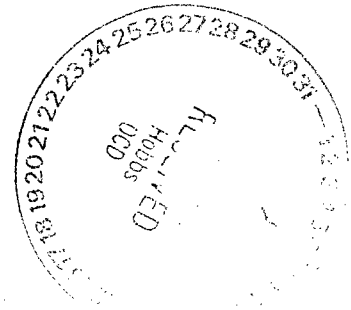


TABLE OF CONTENTS

Background	1
Contaminant and Size of Leak	1
Surface and Ground Water	1
Soils.....	1
Work Performed	1
Appendices	2

I. Background

Safety & Environmental Solutions, Inc. (SESI) was contacted by Lynx Petroleum to perform assessment and cleanup services on an area impacted by the spillage of an unknown amount of ~~crude oil~~ from a ~~flow line~~ near the Reed – Sanderson #9 well site. The subject area is located in ~~Unit L of Section 3, Township 20S, Range 36E~~ in Lea County, New Mexico. The site is situated on a relatively level site. (Figure 1) The subject site is located in the pasture approximately ¼ mile south of the Reed Sanderson # 9 well site. (Figure 2) Upon initial repair of the leak in the flow line, some of the impacted soils were placed on the adjoining roads in the area at the direction of the landowner. The area had been backfilled with soil from adjacent areas. Vertical extent of the contamination had not been determined.

II. Contaminant and Size of Leak

The suspected contaminant is ~~produced water/crude oil emulsion~~, which leaked from the flow line associated with production in the area. The approximate size of the impacted area is approximately ~~1500 sq. ft.~~ The crude oil and produced water is considered exempt oilfield waste. No evidence of other contaminants was observed.

III. Surface and Ground Water

The nearest water well to the subject site is located in Section 3, T20S, R36E. The depth of the water in this well is ~~38.60'~~ according to the database provided by the New Mexico State Engineer's Office.

IV. Soils

The soils in the area are predominantly sandy loam with indurated caliche at a depth of 36 to 48".

V. Work Performed

The cleanup level reached by the application of the "**Guidelines for Remediation of Leaks, Spill and Releases**" *New Mexico Oil Conservation Division* – August 13, 1993 to this site is 100 ppm TPH.

The crude oil impacted soils were excavated and removed from the site. Approximately 1,128 cubic yards of soil were transported to The South Monument Surface Waste Facility, a New Mexico Oil Conservation Division (NMOCD) approved facility, in Lea County, New Mexico for disposal.

After excavation was completed, SESI retrieved composite samples from the bottom and sides of the excavation. The composite samples were preserved in appropriate containers and transported under chain of custody to Cardinal Laboratories in Hobbs, New Mexico for analysis of TPH (method TRPHC-EPA 600/7-79-020,418.1) and BTEX (method BTEX-EPA SW-846-8020). The results of the analysis are as follows.

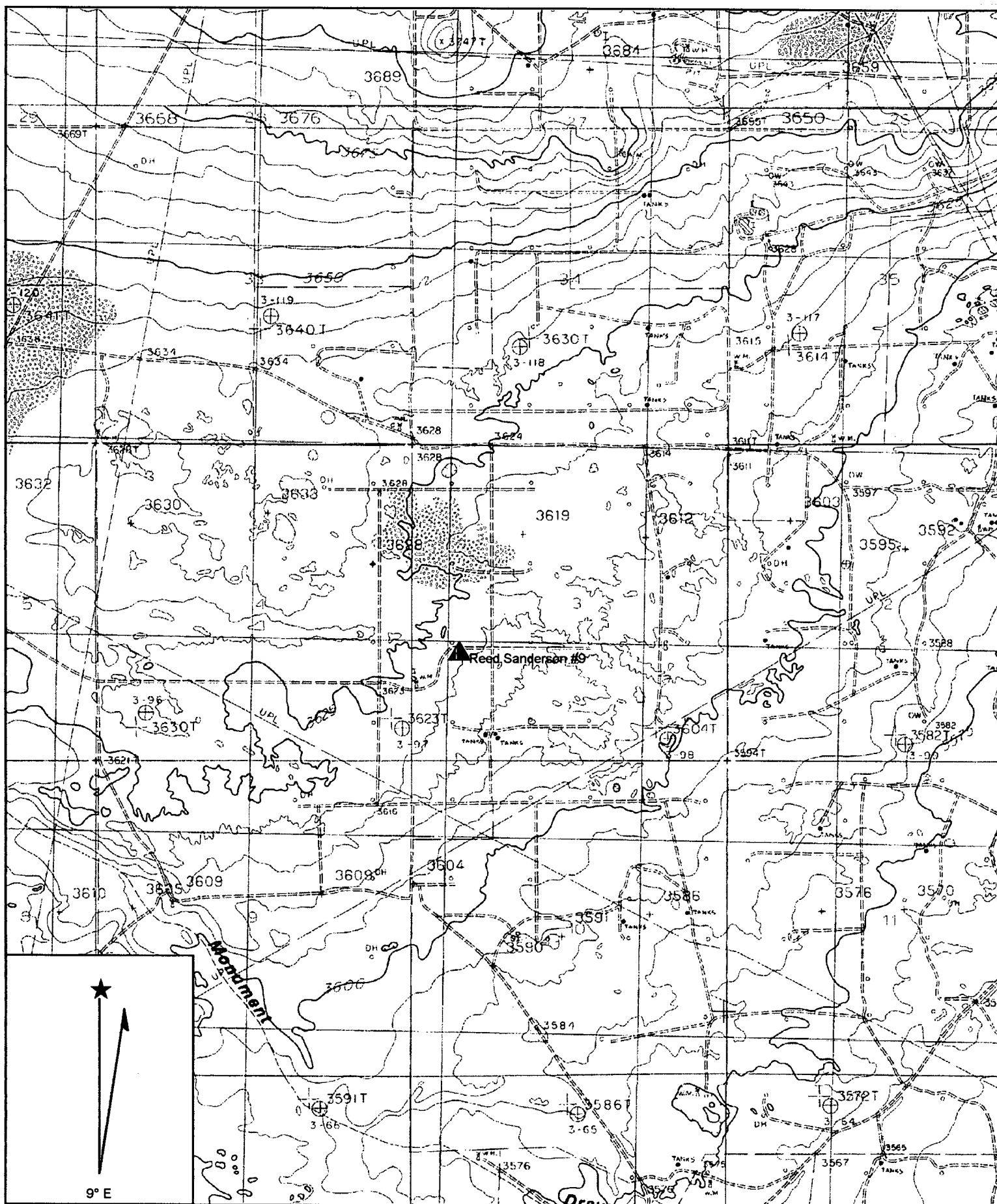
DATE	SAMPLE ID	TPH	CI	BENZENE	TOLUENE	ETHYL BENZENE	TOTAL XYLENES
4/25/02	East Side Bottom	<10.0	96	<0.005	<0.005	<0.005	<0.015
5/1/02	West Side Bottom	<10.0	1100	<0.005	<0.005	<0.005	<0.015
5/1/02	West Side Sides	<10.0	256	<0.005	<0.005	<0.005	0.016

After samples were collected, the excavated area was backfilled with clean topsoil that was available at the location. The area was contoured back to normal grade.

VI. Appendices

Vicinity Map
Site Plan
Analytical Results
Certificate of Waste Manifest
Site Photos

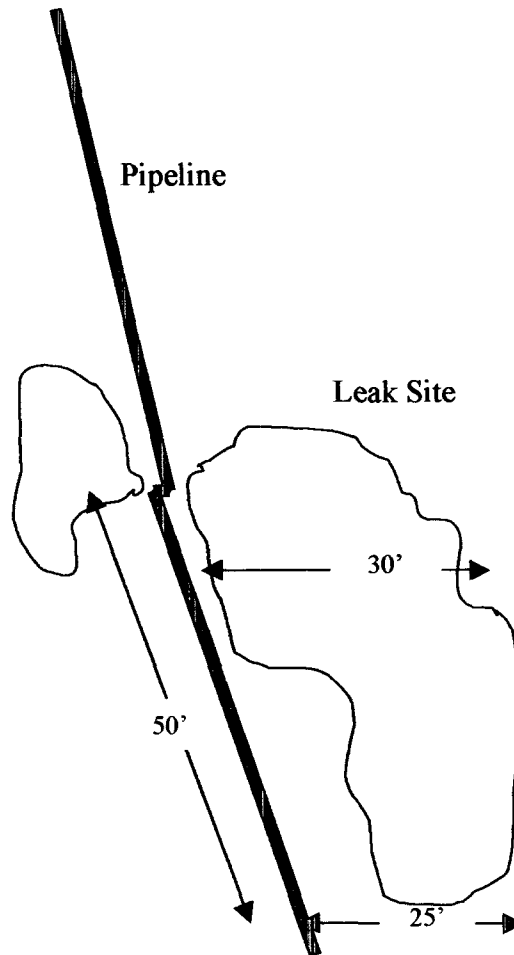
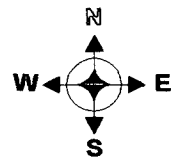
Appendix A Vicinity Map



Name: MONUMENT SOUTH
 Date: 5/24/2002
 Scale: 1 inch equals 2105 feet

Location: 032° 36' 06.6" N 103° 20' 43.2" W
 Caption: Lynx Petroleum
 Reed Sanderson #9
 Unit L, Section 3, T20S, R36E
 Lea County, New Mexico

Appendix B Site Plan



Not To Scale



Lynx Petroleum

Reed Sanderson #9

**Safety & Environmental
Solutions, Inc.**

Appendix C

Analytical Results



CARDINAL LABORATORIES

PHONE (915) 673-7001 • 2111 BEECHWOOD • ABILENE, TX 79603

PHONE (505) 393-2326 • 101 E. MARLAND • HOBBS, NM 88240

ANALYTICAL RESULTS FOR
SAFETY & ENVIRONMENTAL SOLUTIONS, INC.
ATTN: BOB ALLEN
703 E. CLINTON, #103
HOBBS, NM 88240
FAX TO: (505) 393-4388

Receiving Date: 05/01/02
Reporting Date: 05/02/02
Project Number: NOT GIVEN
Project Name: LYNX-REED SANDERSON LEAK
Project Location: MONUMENT, NM

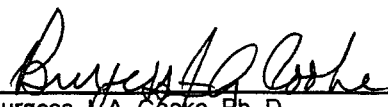
Sampling Date: 05/01/02
Sample Type: SOIL
Sample Condition: COOL & INTACT
Sample Received By: AH
Analyzed By: BC/AH

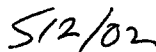
LAB NO.	SAMPLE ID	TPH (mg/Kg)	CI* (mg/Kg)	BENZENE (mg/Kg)	TOLUENE (mg/Kg)	ETHYL BENZENE (mg/Kg)	TOTAL XYLENES (mg/Kg)
---------	-----------	----------------	----------------	--------------------	--------------------	-----------------------------	-----------------------------

ANALYSIS DATE:	05/02/02	05/02/02	05/01/02	05/01/02	05/01/02	05/01/02	05/01/02
H6711-1 W. SIDE-BTM. HOLE	<10.0	1100	<0.005	<0.005	<0.005	<0.005	<0.015
H6711-2 W. SIDE-SIDES	<10.0	256	<0.005	<0.005	<0.005	<0.005	0.016
Quality Control	218	950	0.110	0.105	0.106	0.301	
True Value QC	240	1000	0.100	0.100	0.100	0.300	
% Recovery	90.8	95.0	110	105	106	100	
Relative Percent Difference	7.0	5.0	3.6	0.5	3.3	6.2	

METHODS: TRPHC-EPA 600/4-79-020 418.1; CI-Std. Methods 4500-CI'B; BTEX-EPA SW-846 8260

*Analyses performed on 1:4 w:v aqueous extracts.


Burgess J. A. Cooke, Ph. D.


Date

PLEASE NOTE: **Liability and Damages.** Cardinal's liability and client's exclusive remedy for any claim arising, whether based in contract or tort, shall be limited to the amount paid by client for analyses. All claims, including those for negligence and any other cause whatsoever shall be deemed waived unless made in writing and received by Cardinal within thirty (30) days after completion of the applicable service. In no event shall Cardinal be liable for incidental or consequential damages, including, without limitation, business interruptions, loss of use, or loss of profits incurred by client, its subsidiaries, affiliates or successors arising out of or related to the performance of services hereunder by Cardinal, regardless of whether such claim is based upon any of the above-stated reasons or otherwise.

H6711.XLS



2111 Beechwood, Abilene, TX 79603 101 East Marland, Hobbs, NM 88240
(915) 873-7001 Fax (915) 873-7020 (505) 393-2326 Fax (505) 393-2476

Page 1 of 1

CHAIN-OF-CUSTODY AND ANALYSIS REQUEST

Company Name: SEST		BILL TO		PO #:	
Project Manager:		Company: SAME			
Address: 703 E. CLINTON, #103		Attn:			
City: HOBBS		Address:			
Phone #: (505) 397-0510		City:			
Fax #: (505) 393-4388		State:			
Project #: 393-4388		Zip:			
Project Name: Lynn Reed Sanderson Leak		Phone #:			
Project Location: Marmonest N.M.		Fax #:			

FOR LAB USE ONLY		MATRIX		PRES.	SAMPLING
LAB I.D.	Sample I.D.	(G)RAB OR (C)OMP.	# CONTAINERS	GROUNDWATER	WASTEWATER
H0711-1 -2	Westside Bottom Hole Westside - Sides	1	1	SOIL	OIL
				SLUDGE	OTHER:
				ACID:	ICE / COOL
				OTHER:	DATE
				TIME	TIME
				TIME	TIME

Reinquinished By:	Date:	Time:	Received By: (Lab Staff)	CHECKED BY: (Initials)
Delivered By: (Circle One) Sampler - UPS - Bus - Other:	Date: 5-1-02	Time:	Received By: (Lab Staff)	CHECKED BY: (Initials)

REMARKS: TPH 418.1 @ 55 = 110
 Chlorides in soil @ 44
 BTEX @ 60 = 120



ARDINAL LABORATORIES

PHONE (915) 673-7001 • 2111 BEECHWOOD • ABILENE, TX 79603

PHONE (505) 393-2326 • 101 E. MARLAND • HOBBS, NM 88240

ANALYTICAL RESULTS FOR
SAFETY & ENVIRONMENTAL SOLUTIONS, INC.
ATTN: BOB ALLEN
703 E. CLINTON, #103
HOBBS, NM 88240
FAX TO: (505) 393-4388

Receiving Date: 04/25/02
Reporting Date: 04/29/02
Project Number: LYN-02-001
Project Name: REED SANDERSON FLOW LINE LEAK
Project Location: MONUMENT, NM

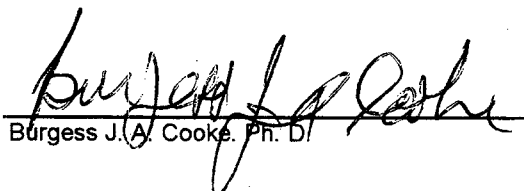
Sampling Date: 04/25/02
Sample Type: SOIL
Sample Condition: COOL & INTACT
Sample Received By: BC
Analyzed By: BC/AH

LAB NUMBER	SAMPLE ID	TPH (mg/Kg)	CI* (mg/Kg)	BENZENE (mg/Kg)	TOLUENE (mg/Kg)	ETHYL BENZENE (mg/Kg)	TOTAL XYLENES (mg/Kg)
------------	-----------	----------------	----------------	--------------------	--------------------	-----------------------------	-----------------------------

ANALYSIS DATE:	04/26/02	04/26/02	04/26/02	04/26/02	04/26/02	04/26/02
H6702-1 E. SIDE BOTTOM	<10.0	96	<0.005	<0.005	<0.005	<0.015
Quality Control	218	1000	0.106	0.104	0.110	0.319
True Value QC	240	1000	0.100	0.100	0.100	0.300
% Recovery	90.8	100	106	104	110	106
Relative Percent Difference	7.0	4.0	1.8	3.6	8.6	3

METHODS: TRPHC-EPA 600/4-79-020 418.1; CI-Std. Methods 4500-CI'B; BTEX-EPA SW-846 8260

*Analysis performed on a 1:4 w:v aqueous extract.


Burgess J. Cooke, Ph. D.


Date

PLEASE NOTE: **Liability and Damages.** Cardinal's liability and client's exclusive remedy for any claim arising, whether based in contract or tort, shall be limited to the amount paid by client for analyses. All claims, including those for negligence and any other cause whatsoever shall be deemed waived unless made in writing and received by Cardinal within thirty (30) days after completion of the applicable service. In no event shall Cardinal be liable for incidental or consequential damages, including, without limitation, business interruptions, loss of use, or loss of profits incurred by client, its subsidiaries, affiliates or successors arising out of or related to the performance of services hereunder by Cardinal, regardless of whether such claim is based upon any of the above-stated reasons or otherwise.

H6702.XLS



2111 Beechwood, Abilene, TX 79603 101 East Marland, Hobbs, NM 88240
(915) 673-7001 Fax (915) 673-7020 (505) 393-2326 Fax (505) 393-2476

Page 1 of 1

CHAIN-OF-CUSTODY AND ANALYSIS REQUEST

[illegible]

Appendix D

Certificate of Waste Manifest

MANIFEST # 5450

SOUTH MONUMENT SURFACE WASTE FACILITY

LEASE OPERATOR:

LYNX PETROLEUM
3325 ENTERPRISE
HOBBS, NM 88240
ATTN: MARC WISE

ORIGINATING LOCATION:

UNIT L S3T20SR36E

TRANSPORTER NAME & ADDRESS:

SAFETY & ENVIRONMENTAL SOLUTIONS, INC.
703 E. CLINTON, SUITE 103
HOBBS, NM 88240
SERGIO CONTRERAS, JR.

DESCRIPTION OF WASTE:

NON-HAZARDOUS HYDROCARBONS

QUANTITY:

36 YDS.

FACILITY CONTACT:

Sergio Contreras
SIGNATURE OF CONTACT

4/22/02
DATE

CELL NUMBER MATERIAL PLACED IN:

B-1

SIGNATURE OF TRANSPORTER (DRIVER):

Robert H. Hunsley
SIGNATURE OF DRIVER

4-22-02
DATE

DISPOSAL SITE

SOUTH MONUMENT SURFACE WASTE FACILITY
P.O. BOX 418
HOBBS, NM 88241-0418
S25 T20S R36E N/2 NE/4

"As a condition of acceptance for disposal, I hereby certify that this waste is an exempt waste as defined by the Environmental Protection Agency (EPA). The waste are: generated from oil and gas exploration and production operations; exempt from Resource Conservation and Recovery Act (RCRA) Subtitle C Regulations; and not mixed with non-exempt waste."

Sergio Contreras
FACILITY REPRESENTATIVE

4/22/02
DATE

MANIFEST # 5451

SOUTH MONUMENT SURFACE WASTE FACILITY

LEASE OPERATOR:

LYNX PETROLEUM
3325 ENTERPRISE
HOBBS, NM 88240
ATTN: MARC WISE

ORIGINATING LOCATION:

UNIT L S3T20SR36E

TRANSPORTER NAME & ADDRESS:

SAFETY & ENVIRONMENTAL SOLUTIONS, INC.
703 E. CLINTON, SUITE 103
HOBBS, NM 88240
SERGIO CONTRERAS, JR.

DESCRIPTION OF WASTE:

NON-HAZARDOUS HYDROCARBONS

QUANTITY:

132 YDS.

FACILITY CONTACT:

Lera L. Capen
SIGNATURE OF CONTACT

4/23/02

DATE

CELL NUMBER MATERIAL PLACED IN:

B-1

SIGNATURE OF TRANSPORTER (DRIVER):

Robert F. Huskey
SIGNATURE OF DRIVER

4-23-02

DATE

DISPOSAL SITE

SOUTH MONUMENT SURFACE WASTE FACILITY
P.O. BOX 418
HOBBS, NM 88241-0418
S25 T20S R36E N/2 NE/4

"As a condition of acceptance for disposal, I hereby certify that this waste is an exempt waste as defined by the Environmental Protection Agency (EPA). The waste are: generated from oil and gas exploration and production operations; exempt from Resource Conservation and Recovery Act (RCRA) Subtitle C Regulations; and not mixed with non-exempt waste."

Lera L. Capen
FACILITY REPRESENTATIVE

4/23/02

DATE

MANIFEST # 5452

SOUTH MONUMENT SURFACE WASTE FACILITY

LEASE OPERATOR:

LYNX PETROLEUM
3325 ENTERPRISE
HOBBS, NM 88240
ATTN: MARC WISE

ORIGINATING LOCATION:

UNIT L S3T20SR36E

TRANSPORTER NAME & ADDRESS:

SAFETY & ENVIRONMENTAL SOLUTIONS, INC.
703 E. CLINTON, SUITE 103
HOBBS, NM 88240
SERGIO CONTRERAS, JR.

DESCRIPTION OF WASTE:

NON-HAZARDOUS HYDROCARBONS

QUANTITY:

192 YDS.

FACILITY CONTACT:

Lenc Ls Capen
SIGNATURE OF CONTACT

4/25/02
DATE

CELL NUMBER MATERIAL PLACED IN:

B-1

SIGNATURE OF TRANSPORTER (DRIVER):

Robert Bushong
SIGNATURE OF DRIVER

4-25-02
DATE

DISPOSAL SITE

SOUTH MONUMENT SURFACE WASTE FACILITY
P.O. BOX 418
HOBBS, NM 88241-0418
S25 T20S R36E N/2 NE/4

"As a condition of acceptance for disposal, I hereby certify that this waste is an exempt waste as defined by the Environmental Protection Agency (EPA). The waste are: generated from oil and gas exploration and production operations; exempt from Resource Conservation and Recovery Act (RCRA) Subtitle C Regulations; and not mixed with non-exempt waste."

Lenc Ls Capen
FACILITY REPRESENTATIVE

4/25/02
DATE

MANIFEST # 5453

SOUTH MONUMENT SURFACE WASTE FACILITY

LEASE OPERATOR:

LYNX PETROLEUM
3325 ENTERPRISE
HOBBS, NM 88240
ATTN: MARC WISE

ORIGINATING LOCATION:

UNIT L S3T20SR36E

TRANSPORTER NAME & ADDRESS:

SAFETY & ENVIRONMENTAL SOLUTIONS, INC.
703 E. CLINTON, SUITE 103
HOBBS, NM 88240
SERGIO CONTRERAS, JR.

DESCRIPTION OF WASTE:

NON-HAZARDOUS HYDROCARBONS

QUANTITY:

252 YDS.

FACILITY CONTACT:

Sergio Contreras
SIGNATURE OF CONTACT

4/26/02
DATE

CELL NUMBER MATERIAL PLACED IN:

B-1

SIGNATURE OF TRANSPORTER (DRIVER):

Robert Huskey
SIGNATURE OF DRIVER

4-26-02
DATE

DISPOSAL SITE

SOUTH MONUMENT SURFACE WASTE FACILITY
P.O. BOX 418
HOBBS, NM 88241-0418
S25 T20S R36E N/2 NE/4

"As a condition of acceptance for disposal, I hereby certify that this waste is an exempt waste as defined by the Environmental Protection Agency (EPA). The waste are: generated from oil and gas exploration and production operations; exempt from Resource Conservation and Recovery Act (RCRA) Subtitle C Regulations; and not mixed with non-exempt waste."

Marc Wise
FACILITY REPRESENTATIVE

4/26/02
DATE

MANIFEST # 5454

SOUTH MONUMENT SURFACE WASTE FACILITY

LEASE OPERATOR:

LYNX PETROLEUM
3325 ENTERPRISE
HOBBS, NM 88240
ATTN: MARC WISE

ORIGINATING LOCATION:

UNIT L S3T20SR36E

TRANSPORTER NAME & ADDRESS:

SAFETY & ENVIRONMENTAL SOLUTIONS, INC.
703 E. CLINTON, SUITE 103
HOBBS, NM 88240
SERGIO CONTRERAS, JR.

DESCRIPTION OF WASTE:

NON-HAZARDOUS HYDROCARBONS

QUANTITY:

2760 YDS.

FACILITY CONTACT:

[Signature]
SIGNATURE OF CONTACT

4/29/02
DATE

CELL NUMBER MATERIAL PLACED IN:

B-1

SIGNATURE OF TRANSPORTER (DRIVER):

[Signature]
SIGNATURE OF DRIVER

4-29-02
DATE

DISPOSAL SITE

SOUTH MONUMENT SURFACE WASTE FACILITY
P.O. BOX 418
HOBBS, NM 88241-0418
S25 T20S R36E N/2 NE/4

"As a condition of acceptance for disposal, I hereby certify that this waste is an exempt waste as defined by the Environmental Protection Agency (EPA). The waste are: generated from oil and gas exploration and production operations; exempt from Resource Conservation and Recovery Act (RCRA) Subtitle C Regulations; and not mixed with non-exempt waste."

[Signature]
FACILITY REPRESENTATIVE

4/29/02
DATE

MANIFEST # 5455

SOUTH MONUMENT SURFACE WASTE FACILITY

LEASE OPERATOR:

LYNX PETROLEUM
3325 ENTERPRISE
HOBBS, NM 88240
ATTN: MARC WISE

ORIGINATING LOCATION:

UNIT L S3T20SR36E

TRANSPORTER NAME & ADDRESS:

SAFETY & ENVIRONMENTAL SOLUTIONS, INC.
703 E. CLINTON, SUITE 103
HOBBS, NM 88240
SERGIO CONTRERAS, JR.

DESCRIPTION OF WASTE:

NON-HAZARDOUS HYDROCARBONS

QUANTITY:

960 YDS.

FACILITY CONTACT:

Lene K. Cooper
SIGNATURE OF CONTACT

4/30/02
DATE

CELL NUMBER MATERIAL PLACED IN:

B-1 - 36 yds
B-7 60 yds

SIGNATURE OF TRANSPORTER (DRIVER):

Robert H. Hestey
SIGNATURE OF DRIVER

4-30-02
DATE

DISPOSAL SITE

SOUTH MONUMENT SURFACE WASTE FACILITY
P.O. BOX 418
HOBBS, NM 88241-0418
S25 T20S R36E N/2 NE/4

"As a condition of acceptance for disposal, I hereby certify that this waste is an exempt waste as defined by the Environmental Protection Agency (EPA). The waste are: generated from oil and gas exploration and production operations; exempt from Resource Conservation and Recovery Act (RCRA) Subtitle C Regulations; and not mixed with non-exempt waste."

Lene K. Cooper
FACILITY REPRESENTATIVE

4/30/02
DATE

MANIFEST # 5455

SOUTH MONUMENT SURFACE WASTE FACILITY

LEASE OPERATOR:

LYNX PETROLEUM
3325 ENTERPRISE
HOBBS, NM 88240
ATTN: MARC WISE

ORIGINATING LOCATION:

UNIT L S3T20SR36E

TRANSPORTER NAME & ADDRESS:

SAFETY & ENVIRONMENTAL SOLUTIONS, INC.
703 E. CLINTON, SUITE 103
HOBBS, NM 88240
SERGIO CONTRERAS, JR.

DESCRIPTION OF WASTE:

NON-HAZARDOUS HYDROCARBONS

QUANTITY:

960 YDS.

FACILITY CONTACT:

Lena La Cerna
SIGNATURE OF CONTACT

4/30/02

DATE

CELL NUMBER MATERIAL PLACED IN:

B-1 - 36 yds
B-7 60 yds

SIGNATURE OF TRANSPORTER (DRIVER):

Robert Huesley
SIGNATURE OF DRIVER

4-30-02
DATE

DISPOSAL SITE

SOUTH MONUMENT SURFACE WASTE FACILITY
P.O. BOX 418
HOBBS, NM 88241-0418
S25 T20S R36E N/2 NE/4

"As a condition of acceptance for disposal, I hereby certify that this waste is an exempt waste as defined by the Environmental Protection Agency (EPA). The waste are: generated from oil and gas exploration and production operations; exempt from Resource Conservation and Recovery Act (RCRA) Subtitle C Regulations; and not mixed with non-exempt waste."

Lena La Cerna
FACILITY REPRESENTATIVE

4/30/02
DATE

MANIFEST # 5456

SOUTH MONUMENT SURFACE WASTE FACILITY

LEASE OPERATOR:
LYNX PETROLEUM
3325 ENTERPRISE
HOBBS, NM 88240
ATTN: MARC WISE

ORIGINATING LOCATION:
UNIT L S3T20SR36E

TRANSPORTER NAME & ADDRESS:
SAFETY & ENVIRONMENTAL SOLUTIONS, INC.
703 E. CLINTON, SUITE 103
HOBBS, NM 88240
SERGIO CONTRERAS, JR.

DESCRIPTION OF WASTE:

NON-HAZARDOUS HYDROCARBONS

QUANTITY:

144 YDS.

FACILITY CONTACT:

Lene L. Lopez
SIGNATURE OF CONTACT

5/01/02
DATE

CELL NUMBER MATERIAL PLACED IN:

B-1 B-7

SIGNATURE OF TRANSPORTER (DRIVER):

Robert Hensley
SIGNATURE OF DRIVER

5-1-02
DATE

DISPOSAL SITE

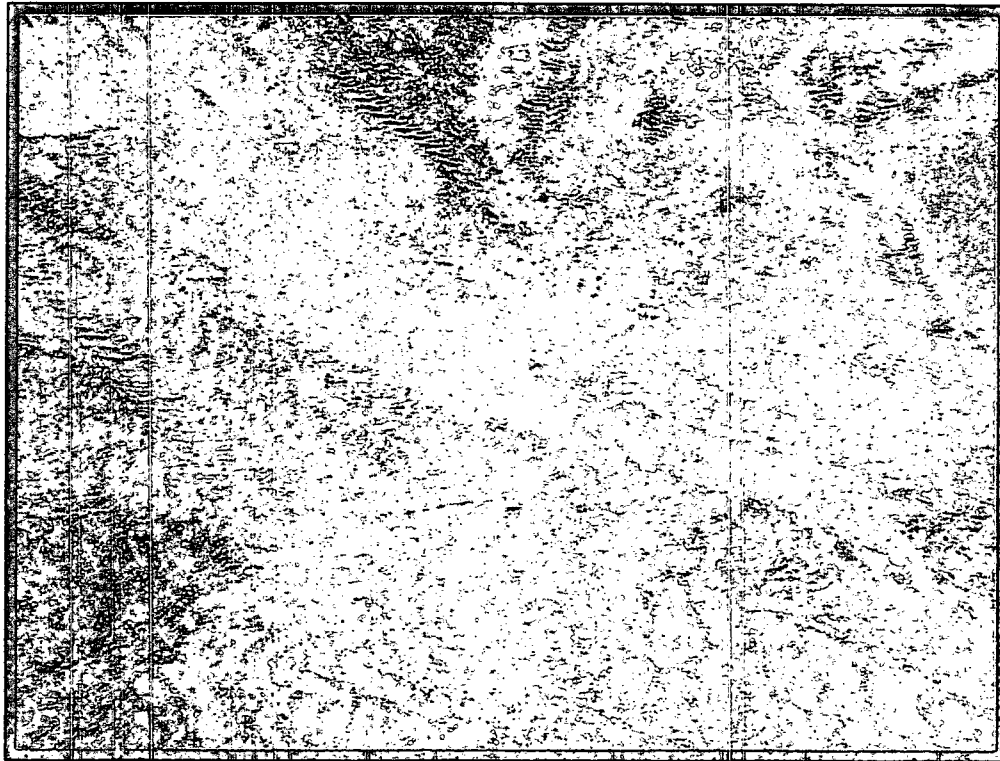
SOUTH MONUMENT SURFACE WASTE FACILITY
P.O. BOX 418
HOBBS, NM 88241-0418
S25 T20S R36E N/2 NE/4

"As a condition of acceptance for disposal, I hereby certify that this waste is an exempt waste as defined by the Environmental Protection Agency (EPA). The waste are: generated from oil and gas exploration and production operations; exempt from Resource Conservation and Recovery Act (RCRA) Subtitle C Regulations; and not mixed with non-exempt waste."

Lene L. Lopez
FACILITY REPRESENTATIVE

5/01/02
DATE

Appendix E Site Photos



Bottom Hole - West End 5/2/02



South Wall - West End 5/2/02



North Wall - West End 5/2/02



East Wall - West End 5/2/02



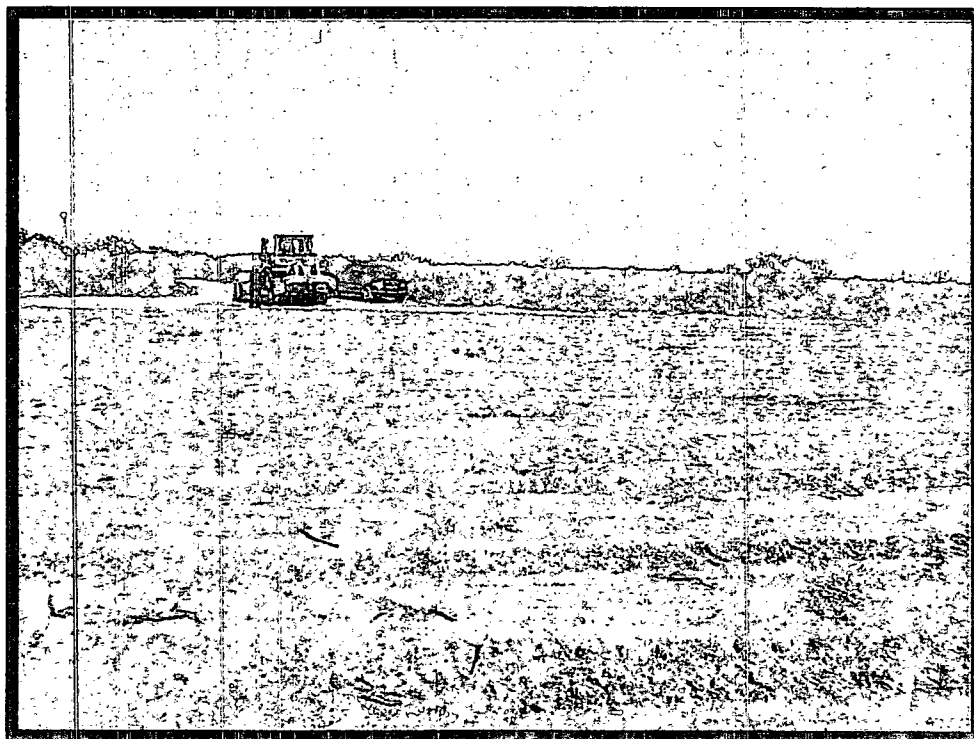
South West Wall - West End 5/2/02



North West Wall - West End 5/2/02



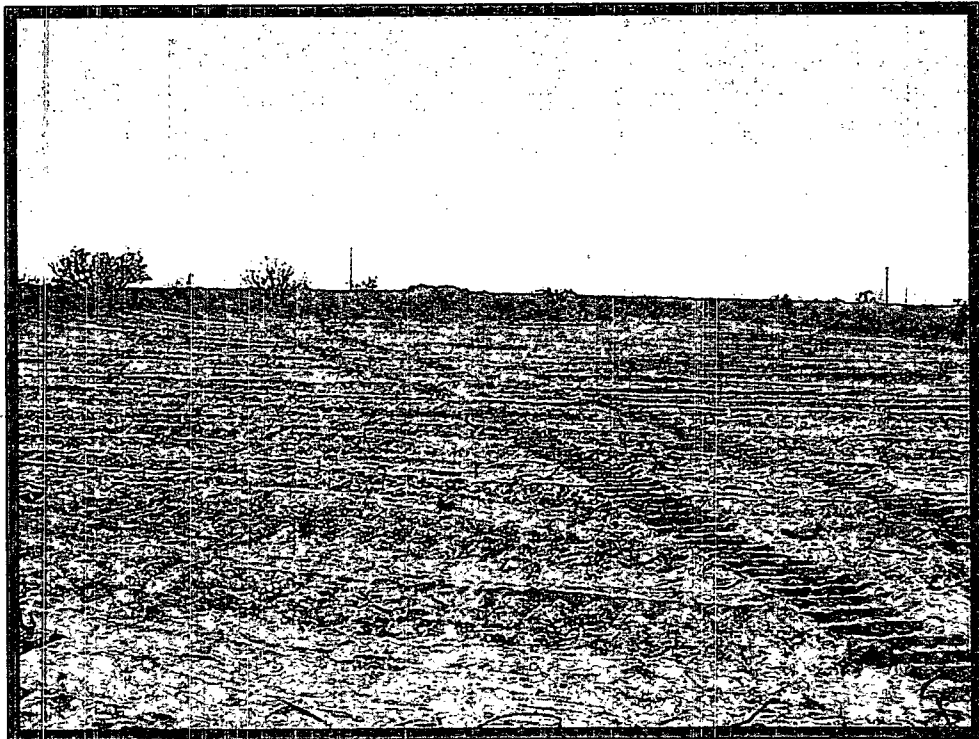
Completed Location: Facing North 5/3/02



Completed Location: Facing West 5/3/02



Completed Location: Facing South 5/3/02



Completed Location: Facing East 5/3/02