

**XTO Energy
EMSU-B Injection Line #2
Unit B, Section 14, Township 20S, Range36E
Lea County, New Mexico
Delineation Report and Work Plan**

April 22, 2014



Prepared for:

***XTO Energy
P.O. BOX 700
Eunice, NM 88231-0700***

By:

***Safety & Environmental Solutions, Inc.
703 E. Clinton
Hobbs, New Mexico 88240
(575) 397-0510***

TABLE OF CONTENTS

| | |
|---|-----------|
| I. COMPANY CONTACTS | 1 |
| II. BACKGROUND | 1 |
| III. SURFACE AND GROUND WATER | 1 |
| IV. WORK PERFORMED | 2 |
| V. WORK PLAN | 3 |
| VI. FIGURES & APPENDICES | 4 |
| Figure 1 - Location Map..... | 3 |
| Figure 2 – Site Plan Showing Extent of Release | 7 |
| Figure 3 – Water Well Location Map | 9 |
| Figure 4 – Monument Area Brine Production 1952 | 11 |
| Figure 5 – March 19, 2014 Sample Point Locations | 13 |
| Appendix A – Log of Boring..... | 15 |
| Appendix B – Analytical Results | 17 |
| Appendix C – Site Photos | 40 |
| Appendix D – C-141 | 46 |

I. Company Contacts

| NAME | Company | Telephone | E-mail |
|---------------|------------|--------------|--|
| John Robinson | XTO Energy | 575-441-5199 | John_robinson@xtoenergy.com |
| Bob Allen | SESI | 575-390-7063 | ballen@sesi-nm.com |

II. Background

Safety and Environmental Solutions, Inc. (SESI) was engaged by XTO Energy to perform delineation services at the EMSU-B Injection Line #2 release site (Figures 1 and 2). This release occurred at a location in Unit Letter B, Section 14, T20S, R36E (32.577816N, 103.322627W). An estimated 10 barrels of produced water were released with zero barrels recovered. The affected area from the release is estimated at 4,270 square-feet.

III. Surface and Ground Water

There is no surface water in the vicinity of the spill location. The nearest surface drainage is Monument Draw located approximately 2,150 ft. south of the location. Physically, Monument Draw channel is poorly defined and best located using the contour lines on the topographic map.

Groundwater records were researched using State Engineer Office and US Geological Survey data bases. The nearest groundwater records are tabulated below and locations are shown on Figure 3. According to the land owner, Mr. Jimmy Cooper, the depth of groundwater in his well (likely located at L 10135) is 30 ft.

| Well Location Township, Range, Section, Quarter | State or Federal ID Number | Depth Well (feet) | Depth Water (feet) | Month /Year | Source |
|---|-------------------------------|-------------------------|--------------------------|----------------|--------|
| T20S, R36E, Sec 14 SW | L 04506 | 70 | 50 | 8/60 | NM SEO |
| T20S, R36E, Sec 14 NE | L 04507 | 82 | 53 | 8/59 | NM SEO |
| T20S, R36E, Sec 14 SE | L 06667 | 130 | 55 | 4/70 | NM SEO |
| T20S, R36E, Sec 14 NE | L 10135 | 55 | 20 | 6/90 | NM SEO |
| T20S, R36E, Sec 11 SE | 323452103185901 | 65 | 31.7 | 3/96 | USGS |

Note: NM SEO locations not field checked and actual locations may differ from those mapped.

A search of the NMOCD Database and the USGS groundwater database revealed historical chloride contamination in the groundwater within a close proximity to this release site. The results of the search are shown in the table below.

| Well Location Township, Range, Section, Quarter | State or Federal ID Number | Chloride Concentration (mg/L) | Month /Year | Source |
|---|-------------------------------|-------------------------------------|----------------|--------|
| T20S, R36E, Sec 15 SE | 323420103200901 | 1,080 | 3/54 | USGS |
| T20S, R36E, Sec 15 SE | 323420103200901 | 1,240 | 9/58 | USGS |
| T20S, R36E, Sec 11 SE | 323452103185901 | 1,440 | 1/14 | SESI |
| T20S, R36E, Sec 14 NE | 1RP-280 | 535 - 2,030 | 6/97 | NM OCD |
| T20S, R36E, Sec 10 SW | N/A | 120 | 1/14 | SESI |

The USGS Well 20.36.15.421 is located approximately 4,450' southwest of the release site. This well was sampled in 1954 and 1958. In 1954 the chloride level in this well was 1,080 mg/L and in 1958 the chloride was 1,240 mg/L. On January 4, 2014 a water quality sample was taken in the Klein stock well (located in the SE quarter of Sec 11 and shown in the table above). Chloride in this well was 1,440 mg/L and TDS was 3,380 mg/L.

The NMOCD file 1RP-280 includes Monitor Well sampling results submitted by Warren Petroleum Company, on behalf of Chevron USA reports chloride contamination in six monitor wells in June 1997. Chloride concentrations in these wells on this date range from 535 to 2,030 mg/L. This site is located approximately 1,000 feet south-southwest of the release site.

By way of comparison, a sample was obtained from a livestock well (identified as West Stock Well) also on January 4. The well location is in the NE/4,SW/4 Section 10, T20S, R36E at a distance approximately 1.5 miles northwest of the release site. Chloride concentration in the well was 120 mg/L. This location is in an area having historically less brine production than areas to the east in the vicinity of the release location.

Brine production impacting water quality south of the Monument area has been documented a 1961 report by the USGS and the New Mexico Bureau of Mines and Mineral Resources*. A figure from the report showing the volume and extent of brine discharged to surface pits in 1952 is provided with this report (Figure 4). In the area south of monument between 100 and 150 acre-feet of brine per square mile was discharged. This is the equivalent of between 776,000 and 1,164,000 barrels per square mile for just one year! Or to put it another way, this volume is enough to cover a square mile to a depth of 1.9 to 2.8 inches.

IV. Work Performed

On August 12, 2013 SESI was onsite to delineate the vertical extent of the release. The leak in the injection line was located by excavating the pipeline and soil samples were taken from the excavation using a trackhoe. Four samples were taken at 5 ft. intervals to a depth of 20 ft. below the spill area. The samples were properly preserved and transported under Chain-of-Custody to Cardinal Laboratories for analysis. The samples were analyzed for chlorides (EPA method 300.0), benzene, toluene, ethyl benzene, and xylenes (BTEX) (EPA method 8021B), and Total Petroleum Hydrocarbons (TPH) (EPA method 8015M). The results are shown in the table below.

| Sample ID | Chloride (mg/Kg) | Benzene (mg/Kg) | Toluene (mg/Kg) | Ethyl- benzene (mg/Kg) | Total Xylenes (mg/Kg) | TPH (mg/Kg) |
|------------------|-----------------------------|----------------------------|----------------------------|---------------------------------------|--------------------------------------|------------------------|
| SP-1 5 ft. | 1,660 | <0.050 | <0.050 | <0.050 | <0.150 | <10.0 |
| SP-1 10 ft.' | 1,540 | <0.050 | <0.050 | <0.050 | <0.150 | <10.0 |
| SP-1 15 ft. | 1,520 | <0.050 | <0.050 | <0.050 | <0.150 | <10.0 |
| SP-1 20 ft. | 1,650 | <0.050 | <0.050 | <0.050 | <0.150 | <10.0 |

Because results remained elevated at 20 ft. an additional 15 ft. of samples were obtained on August 16 using the trackhoe. The results of this sampling are shown below.

* A. Nicholson, Jr. and A. Clebsch, Jr. Geology and Ground-Water Conditions in Southern Lea County, New Mexico, Ground-Water Report 6, NM Bureau of Mines and Mineral Resources, 1961.

| Sample ID | Chloride (mg/Kg) | Benzene (mg/Kg) | Toluene (mg/Kg) | Ethyl-benzene (mg/Kg) | Total Xylenes (mg/Kg) | TPH (mg/Kg) |
|-------------|------------------|-----------------|-----------------|-----------------------|-----------------------|-------------|
| SP-1 25 ft. | 1,470 | <0.050 | <0.050 | <0.050 | <0.150 | <10.0 |
| SP-1 30 ft. | 1,700 | <0.050 | <0.050 | <0.050 | <0.150 | <10.0 |
| SP-1 35 ft. | 1,330 | <0.050 | <0.050 | <0.050 | <0.150 | <10.0 |

The results continued to show chloride elevated at a depth of 35 ft. requiring additional investigation. A hollow stem auger drilling rig operated by EcoEnviro Drilling of Lovington was brought to the site on December 13, 2013 to further investigate the depth of elevated chlorides. Soil samples were collected at 40 and 45 ft. and submitted for laboratory analysis for chloride only. As indication of water saturation was observed at 45 feet, no further drilling occurred or samples taken so as to avoid drilling into the water table. The boring was backfilled with bentonite and the drilling log is attached.

| Sample ID | Chloride (mg/Kg) |
|-------------|------------------|
| BH-1 40 ft. | 1,570 |
| BH-1 45 ft. | 1,880 |

Though with drilling the vertical extent of contamination had been determined, the horizontal or areal extent had not. To determine horizontal extent, on March 19, 2014 nine hand-augered boreholes were advanced to a depth of 3 ft. and one was augered to a depth of 5 ft. below the bottom of the small onsite excavation. Soil samples were taken from each borehole and submitted to Cardinal Laboratories for analysis. The results of the sampling are shown in the table below.

| Sample ID | Chloride (mg/Kg) | Sample ID | Chloride (mg/Kg) |
|---------------|------------------|-------------------------------|------------------|
| SP 1 @ 3' BGS | 32.0 | SP 6 @ 3' BGS | <16.0 |
| SP 2 @ 3' BGS | 64.0 | SP 7 @ 3' BGS | 1,410 |
| SP 3 @ 3' BGS | 1,680 | SP 8 @ 3' BGS | 992 |
| SP 4 @ 3' BGS | 1,330 | SP 9 @ 3' BGS | 32.0 |
| SP 5 @ 3' BGS | 1,070 | SP 10 @ 5' BGS Inside Hole | 96.0 |

The location of these samples is shown in Figure 5. Some sample points are shown by location and by sample results to be outside the spill release footprint. These include SP 1, 2, and SP 6. SP-9 is located on the periphery of the release. Because the area has been disturbed, the spill footprint outline is not visible. Before excavation, it will need to be located using measurements from the site map (Figure 2).

V. Work Plan

The spill area will be excavated to a depth of 3 ft. and removed to an NOCD approved facility for disposal. In addition the soil pile from the existing small excavation will also be removed for disposal. Confirmation samples from the side and bottom of the excavation will be taken, these samples will confirm that the horizontal extent of contamination has been reached and document the level of chloride being left in place. A 20 mil

polyethylene liner will be installed in the bottom of the excavation. The excavation will be backfilled with clean soil, returned to natural grade, and reseeded.

Because sampling and a search of groundwater databases revealed historical chloride contamination in the groundwater within a close proximity to this release site and not a result of the current release, completion of the above proposed work will suffice for groundwater protection and no further remediation or other action is necessary at this location.

VI. Figures & Appendices

Figure 1 – Location Map
Figure 2 – Site Plan Showing Extent of Release
Figure 3 – Water Well Location Map
Figure 4. – Monument Area Brine Production 1952
Figure 5. – March 19, 2014 Sample Point Locations
Appendix A – Log of Boring
Appendix B – Analytical Results
Appendix C – Site Photos
Appendix D – C-141

Figure 1

Location Map

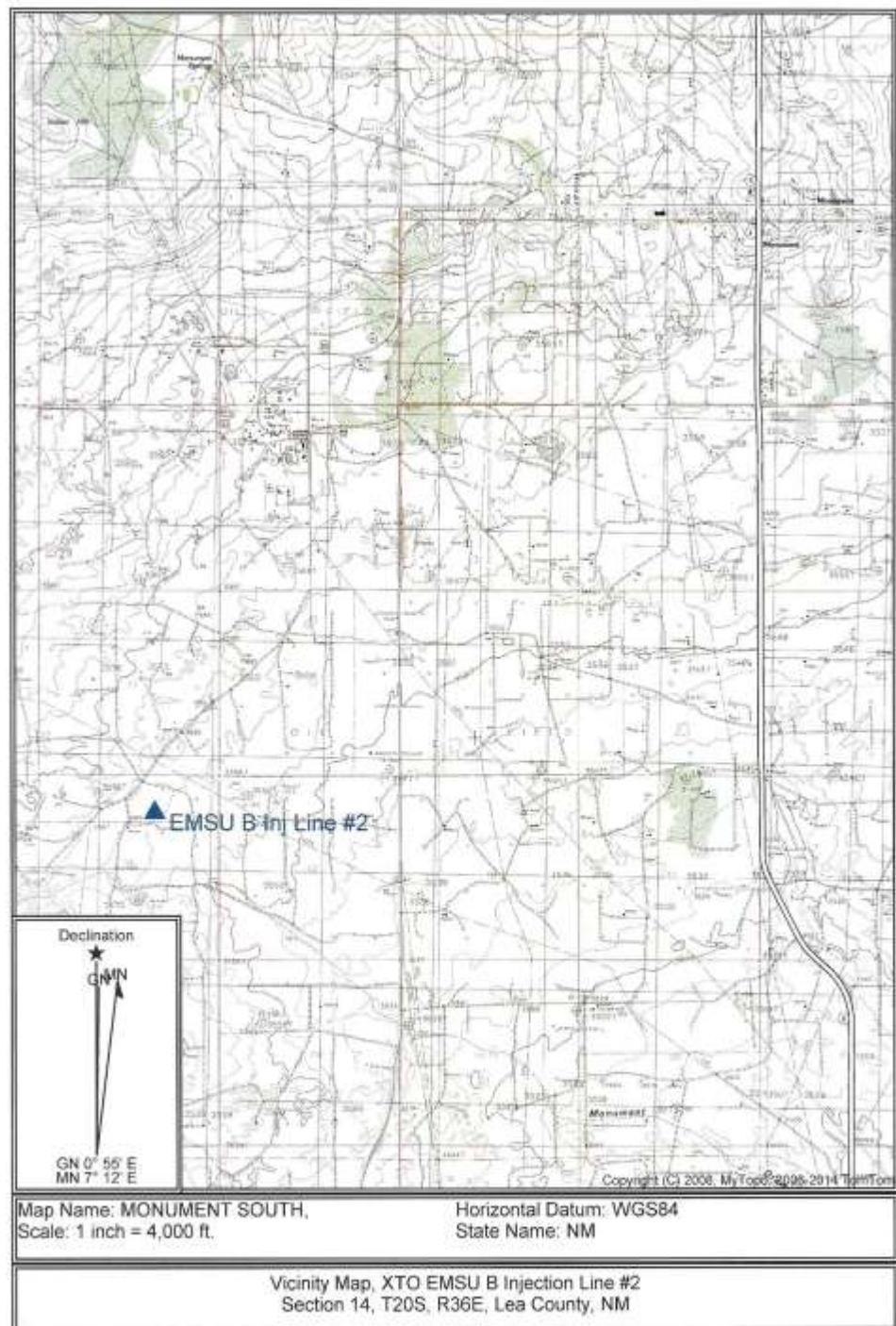
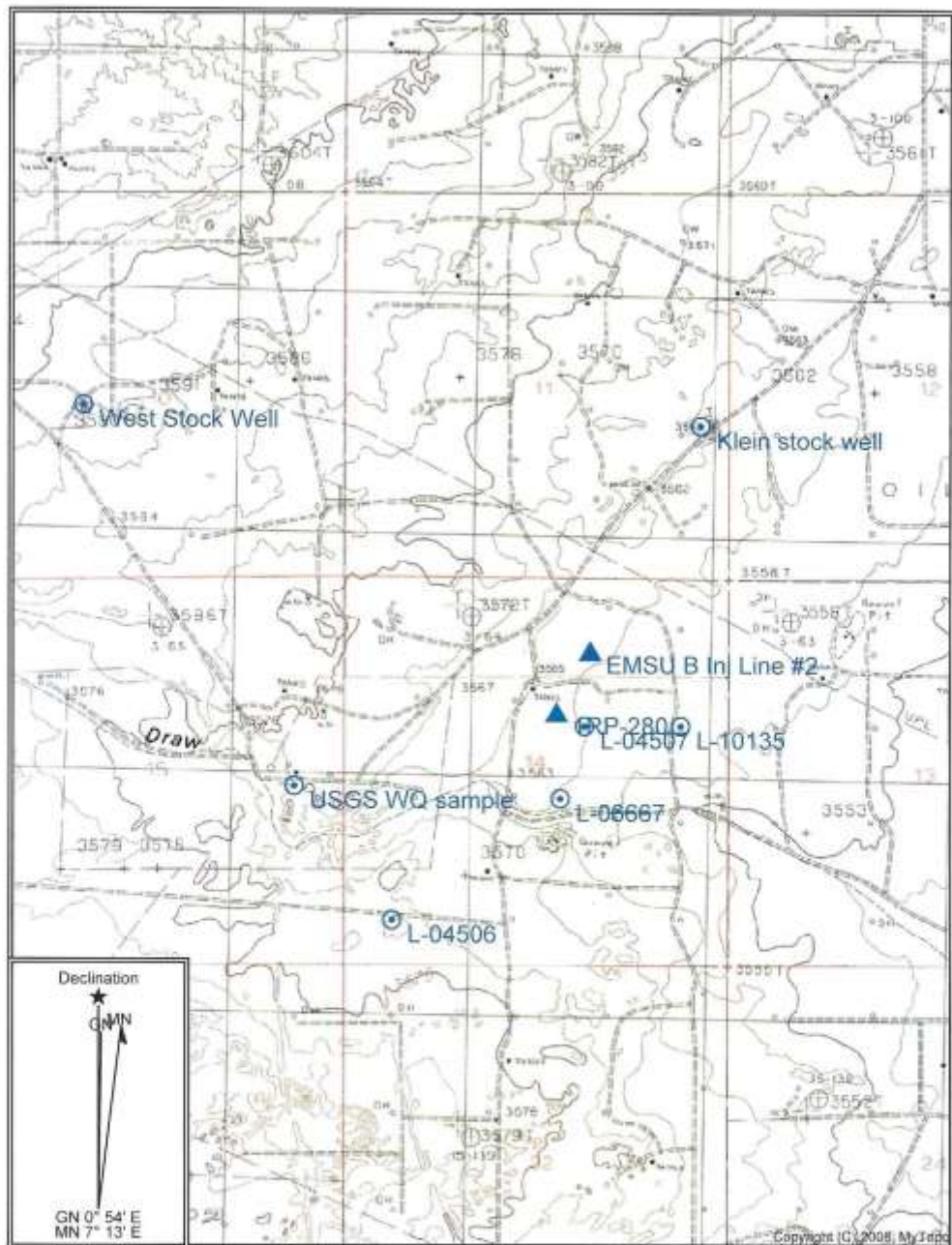


Figure 2
Site Plan Showing Extent of Release



XTO-13-002 EMSU B Injection Line #2

Figure 3
Water Well Location Map



Map Name: MONUMENT SOUTH,
Scale: 1 inch = 2,000 ft.

Horizontal Datum: WGS84
State Name: NM

Location of Water Wells, XTO EMSU B Injection Line 2
Section 14, T20S R36 E, Lea County, NM

Figure 4
Monument Area Brine Production 1952

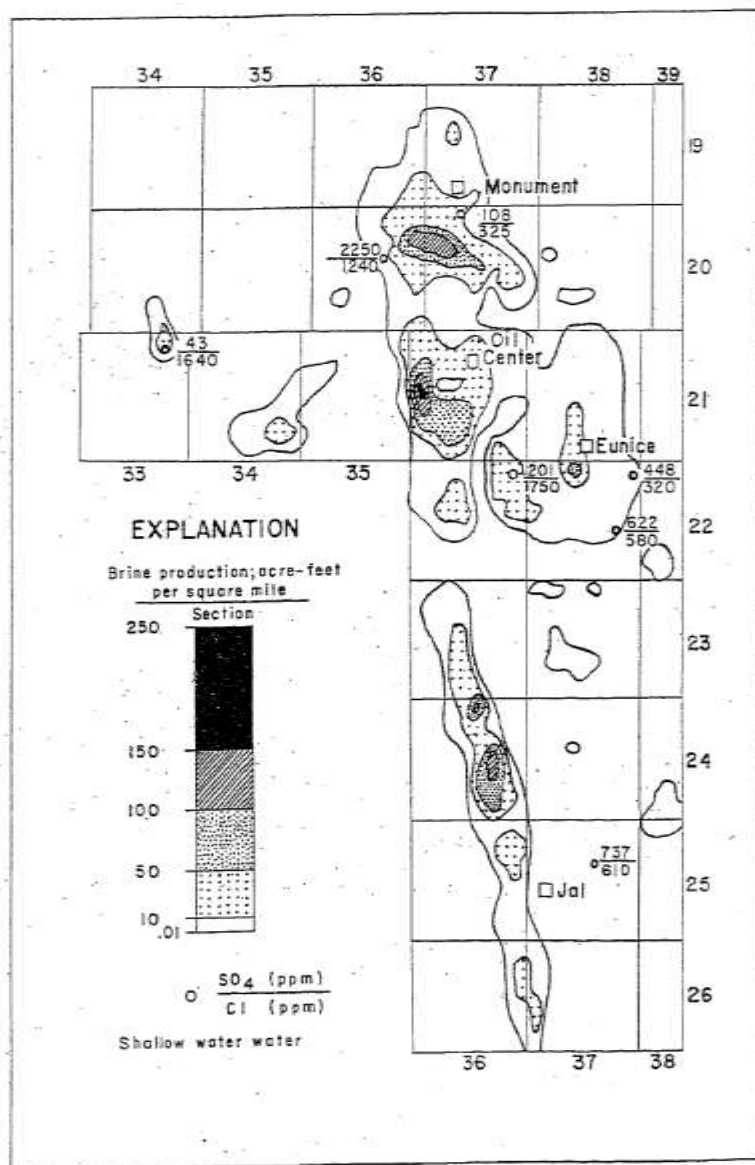
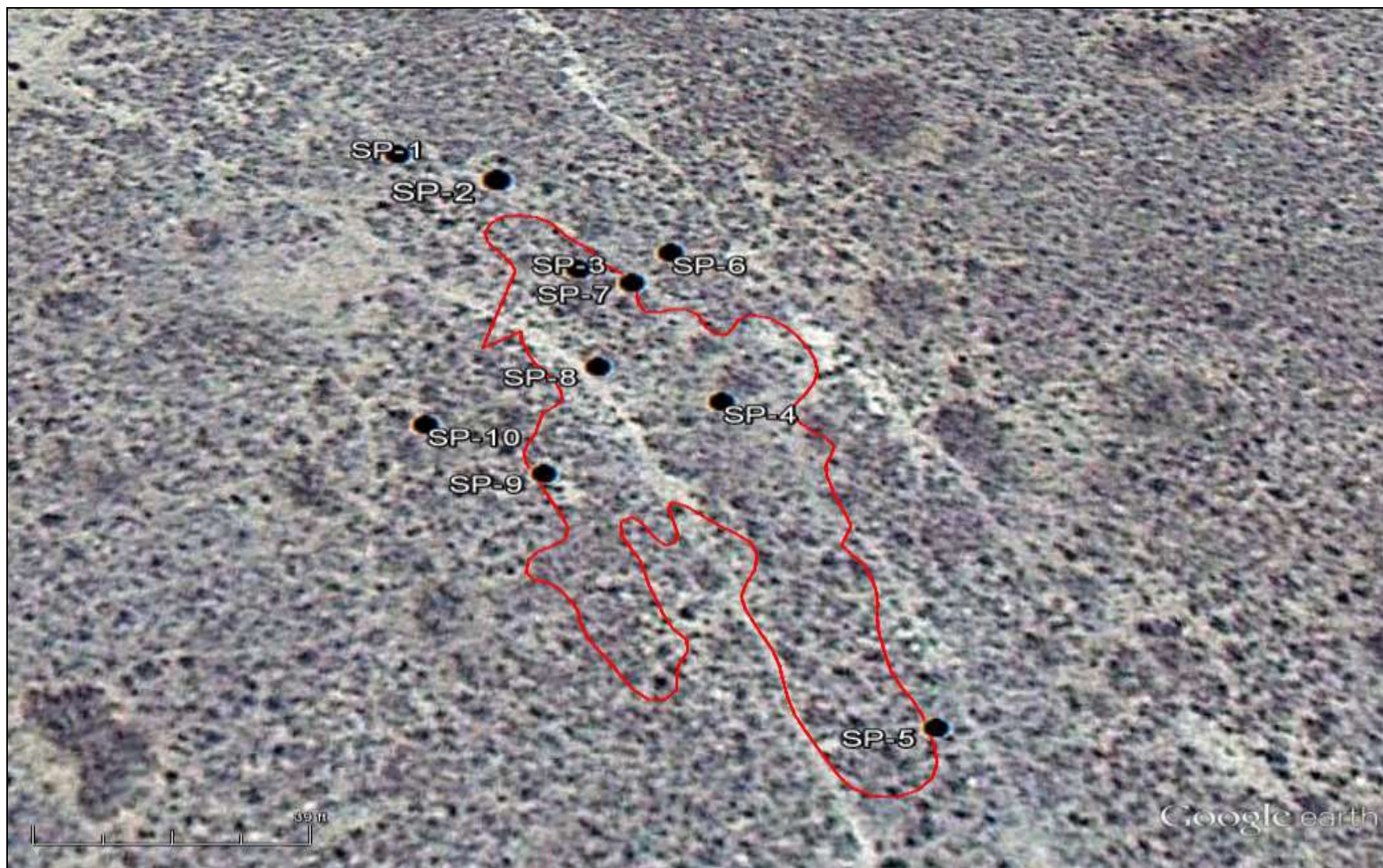


Figure 25

OIL-FIELD BRINE PRODUCTION IN SOUTHERN LEA COUNTY, N. MEX., 1952

Showing locations of selected water wells that have been contaminated by brine. Upper figure adjacent to well symbol is sulfate concentration; lower figure is chloride concentration.

Figure 5
March 19, 2014 Sample Point Locations



XTO-13-002 EMSU B INJECTION LINE #002 Sample Points

Appendix A

Log of Boring



**Safety & Environmental
Solutions, Inc.**

LOG OF BORING BH-1

(Page 1 of 1)

Produced Water Release Investigation
XTO Energy
XTO EMSU-B Injection Line #2
Unit B, Sec 14, T20S R36E, Lea County, NM
N 32.57780°, W 103.32259°

Date, Time Started : 12/10/13, 1255
Date, Time Complete : 12/17/08, 1800
Hole Diameter : 8 1/4 in.
Drilling Method : Hollow Stem Auger
Drilling Equipment : Foremost-Mobile B-57

Drilled By : Eco/Enviro Drilling
Sampling Method : 5 ft. core barrel
Logged By : David Boyer, P.G.
Company Rep. : Guy Pearce, XTO

| Depth in Feet | Sample Type | Recovery (ft.) | USCS | GRAPHIC | Sample Type SS Split Spoon (18" or 24") CB Core Barrel (2.5' or 5') CT Auger Cuttings NR No recovery | DESCRIPTION | Lab No. | Lab Chlorides (mg/Kg) | | | | | | | |
|---------------------|----------------|-------------------|-------|---|--|-------------|---------|-----------------------|--|--|--|--|--|--|--|
| | | | | | | | | | | | | | | | |
| 0 | CT | | | | 0-3 ft. Top soil, silty sand, disturbed | H302998-01 | 1,570 | | | | | | | | |
| | | | | | 3-5 ft. CALICHE cuttings, white, limey, dry | | | | | | | | | | |
| 5 | CT | | | 5-10 ft. SILTY SAND, light brown, fine grained, dry, no H/C staining or odor | H302998-02 | | | 1,660 | | | | | | | |
| | | | | | | | | | | | | | | | |
| 10 | CB | 1.5 | ML/CA | 10-15 ft. CLAYEY SANDY SILT with CALICHE, sand very fine grained, | | | | | | | | | | | |
| | | | | | | | | | | | | | | | |
| 15 | CB | 1.7 | ML | 15-20 ft. CLAYEY SANDY SILT, light brown to creme color, slightly damp | | | | | | | | | | | |
| | | | | | | | | | | | | | | | |
| 20 | CB | 2.6 | | 20-25 ft. SILTY SAND, light brown, very fine grained, some non-H/C odor | | | | | | | | | | | |
| | | | | | | | | | | | | | | | |
| 25 | CB | 2.0 | SM | 25-30 ft. SILTY SAND, light brown, very fine grained, slightly damp, no caliche, non H/C odor | | | | | | | | | | | |
| | | | | | | | | | | | | | | | |
| 30 | CB | 2.0 | | 30-35 ft. SILTY SAND, light brown, very fine to fine grained, damp, | | | | | | | | | | | |
| | | | | | | | | | | | | | | | |
| 35 | CB | 3.2 | SM/ML | 35-40 ft. CLAYEY SILTY SAND/SILT, light brown, damp with odor | | | | | | | | | | | |
| | | | | | | | | | | | | | | | |
| 40 | CB | 2.3 | ML/SM | 40-45 ft. CLAYEY SANDY SILT or SILTY SAND, light brown, small sandstone pebbles, wet starting 43-44 ft (capillary fringe), no further drilling. | | | | | | | | | | | |
| | | | | | | | | | | | | | | | |
| 45 | | | | | | | | | | | | | | | |
| 50 | | | | | | | | | | | | | | | |

Notes: Boring backfilled with 28 bags bentonite, hydrated.
H/C - Hydrocarbon

Z:\Company Files\XTO Energy\2013\XTO-13-002 EMSU-B Injection Line 2\BH-1.bor

Appendix B

Analytical Results



PHONE (575) 393-2326 • 101 E. MARLAND • HOBBS, NM 88240

August 19, 2013

Bob Allen

Safety & Environmental Solutions

703 East Clinton

Hobbs, NM 88240

RE: INJECTION LINE 2-LEAK

Enclosed are the results of analyses for samples received by the laboratory on 08/12/13 14:15.

Cardinal Laboratories is accredited through Texas NELAP under certificate number T104704398-11-3. Accreditation applies to drinking water, non-potable water and solid and chemical materials. All accredited analytes are denoted by an asterisk (*). For a complete list of accredited analytes and matrices visit the TCEQ website at www.tceq.texas.gov/field/qa/lab_accrtd_certif.html.

Cardinal Laboratories is accredited through the State of Colorado Department of Public Health and Environment for:

| | |
|------------------|------------------------------|
| Method EPA 552.2 | Haloacetic Acids (HAA-5) |
| Method EPA 524.2 | Total Trihalomethanes (TTHM) |
| Method EPA 524.4 | Regulated VOCs (V1, V2, V3) |

Accreditation applies to public drinking water matrices.

This report meets NELAP requirements and is made up of a cover page, analytical results, and a copy of the original chain-of-custody. If you have any questions concerning this report, please feel free to contact me.

Sincerely,

A handwritten signature in black ink that reads "Coley D. Keene".

Coley D. Keene

Lab Director/Quality Manager



PHONE (575) 393-2326 • 101 E. MARLAND • HOBBS, NM 88240

Analytical Results For:

Safety & Environmental Solutions
Bob Allen
703 East Clinton
Hobbs NM, 88240
Fax To: (575) 393-4388

| | | | |
|-------------------|-----------------------|---------------------|---------------|
| Received: | 08/12/2013 | Sampling Date: | 08/12/2013 |
| Reported: | 08/19/2013 | Sampling Type: | Soil |
| Project Name: | INJECTION LINE 2-LEAK | Sampling Condition: | Cool & Intact |
| Project Number: | XTO-13-002 | Sample Received By: | Jodi Henson |
| Project Location: | EMSU-B | | |

Sample ID: SP-1 5' (H301907-01)

| BTEX 8260B | | mg/kg | | Analyzed By: MS | | | | | |
|----------------|--------|-----------------|------------|-----------------|------|------------|---------------|------|-----------|
| Analyte | Result | Reporting Limit | Analyzed | Method Blank | BS | % Recovery | True Value QC | RPD | Qualifier |
| Benzene* | <0.050 | 0.050 | 08/15/2013 | ND | 2.15 | 108 | 2.00 | 3.67 | |
| Toluene* | <0.050 | 0.050 | 08/15/2013 | ND | 2.16 | 108 | 2.00 | 4.83 | |
| Ethylbenzene* | <0.050 | 0.050 | 08/15/2013 | ND | 2.10 | 105 | 2.00 | 4.57 | |
| Total Xylenes* | <0.150 | 0.150 | 08/15/2013 | ND | 6.24 | 104 | 6.00 | 4.81 | |
| Total BTEX | <0.300 | 0.300 | 08/15/2013 | ND | | | | | |

Surrogate: Dibromofluoromethane 95.0 % 61.3-142

Surrogate: Toluene-d8 101 % 71.3-129

Surrogate: 4-Bromofluorobenzene 105 % 65.7-141

| Chloride, SM4500Cl-B | | mg/kg | | Analyzed By: AP | | | | | |
|----------------------|--------|-----------------|------------|-----------------|-----|------------|---------------|------|-----------|
| Analyte | Result | Reporting Limit | Analyzed | Method Blank | BS | % Recovery | True Value QC | RPD | Qualifier |
| Chloride | 1660 | 16.0 | 08/13/2013 | ND | 432 | 108 | 400 | 3.64 | |

| TPH 8015M | | mg/kg | | Analyzed By: DW | | | | | |
|--------------|--------|-----------------|------------|-----------------|-----|------------|---------------|------|-----------|
| Analyte | Result | Reporting Limit | Analyzed | Method Blank | BS | % Recovery | True Value QC | RPD | Qualifier |
| GRO C6-C10 | <10.0 | 10.0 | 08/13/2013 | ND | 183 | 91.5 | 200 | 5.98 | |
| DRO >C10-C28 | <10.0 | 10.0 | 08/13/2013 | ND | 191 | 95.7 | 200 | 6.03 | |

Surrogate: 1-Chlorooctane 95.0 % 65.2-140

Surrogate: 1-Chlorooctadecane 109 % 63.6-154

Cardinal Laboratories

*=Accredited Analyte

PLEASE NOTE: Liability and Damages. Cardinal's liability and client's exclusive remedy for any claim arising, whether based in contract or tort, shall be limited to the amount paid by client for analyses. All claims, including those for negligence and any other cause whatsoever shall be deemed waived unless made in writing and received by Cardinal within thirty (30) days after completion of the applicable services. In no event shall Cardinal be liable for incidental or consequential damages, including, without limitation, business interruptions, loss of use, or loss of profits incurred by client, its subsidiaries, affiliates or successors arising out of or related to the performance of the services hereunder by Cardinal, regardless of whether such claim is based upon any of the above stated reasons or otherwise. Results relate only to the samples identified above. This report shall not be reproduced except in full with written approval of Cardinal Laboratories.

Celey D. Keene, Lab Director/Quality Manager



PHONE (575) 393-2326 • 101 E. MARLAND • HOBBS, NM 88240

Analytical Results For:

Safety & Environmental Solutions
Bob Allen
703 East Clinton
Hobbs NM, 88240
Fax To: (575) 393-4388

| | | | |
|-------------------|-----------------------|---------------------|---------------|
| Received: | 08/12/2013 | Sampling Date: | 08/12/2013 |
| Reported: | 08/19/2013 | Sampling Type: | Soil |
| Project Name: | INJECTION LINE 2-LEAK | Sampling Condition: | Cool & Intact |
| Project Number: | XTO-13-002 | Sample Received By: | Jodi Henson |
| Project Location: | EMSU-B | | |

Sample ID: SP-1 10' (H301907-02)

| BTEX 8260B | | mg/kg | | Analyzed By: MS | | | | | |
|----------------|--------|-----------------|------------|-----------------|------|------------|---------------|------|-----------|
| Analyte | Result | Reporting Limit | Analyzed | Method Blank | BS | % Recovery | True Value QC | RPD | Qualifier |
| Benzene* | <0.050 | 0.050 | 08/15/2013 | ND | 2.15 | 108 | 2.00 | 3.67 | |
| Toluene* | <0.050 | 0.050 | 08/15/2013 | ND | 2.16 | 108 | 2.00 | 4.83 | |
| Ethylbenzene* | <0.050 | 0.050 | 08/15/2013 | ND | 2.10 | 105 | 2.00 | 4.57 | |
| Total Xylenes* | <0.150 | 0.150 | 08/15/2013 | ND | 6.24 | 104 | 6.00 | 4.81 | |
| Total BTEX | <0.300 | 0.300 | 08/15/2013 | ND | | | | | |

Surrogate: Dibromofluoromethane 93.6 % 61.3-142

Surrogate: Toluene-d8 103 % 71.3-129

Surrogate: 4-Bromofluorobenzene 105 % 65.7-141

| Chloride, SM4500Cl-B | | mg/kg | | Analyzed By: AP | | | | | |
|----------------------|--------|-----------------|------------|-----------------|-----|------------|---------------|------|-----------|
| Analyte | Result | Reporting Limit | Analyzed | Method Blank | BS | % Recovery | True Value QC | RPD | Qualifier |
| Chloride | 1540 | 16.0 | 08/13/2013 | ND | 432 | 108 | 400 | 3.64 | |

| TPH 8015M | | mg/kg | | Analyzed By: DW | | | | | |
|--------------|--------|-----------------|------------|-----------------|-----|------------|---------------|------|-----------|
| Analyte | Result | Reporting Limit | Analyzed | Method Blank | BS | % Recovery | True Value QC | RPD | Qualifier |
| GRO C6-C10 | <10.0 | 10.0 | 08/14/2013 | ND | 183 | 91.5 | 200 | 5.98 | |
| DRO >C10-C28 | <10.0 | 10.0 | 08/14/2013 | ND | 191 | 95.7 | 200 | 6.03 | |

Surrogate: 1-Chlorooctane 95.7 % 65.2-140

Surrogate: 1-Chlorooctadecane 110 % 63.6-154

Cardinal Laboratories

*=Accredited Analyte

PLEASE NOTE: Liability and Damages. Cardinal's liability and client's exclusive remedy for any claim arising, whether based in contract or tort, shall be limited to the amount paid by client for analyses. All claims, including those for negligence and any other cause whatsoever shall be deemed waived unless made in writing and received by Cardinal within thirty (30) days after completion of the applicable service. In no event shall Cardinal be liable for incidental or consequential damages, including, without limitation, business interruptions, loss of use, or loss of profits incurred by client, its subsidiaries, affiliates or successors arising out of or related to the performance of the services hereunder by Cardinal, regardless of whether such claim is based upon any of the above stated reasons or otherwise. Results relate only to the samples identified above. This report shall not be reproduced except in full with written approval of Cardinal Laboratories.

Celestine D. Keene

Celestine D. Keene, Lab Director/Quality Manager

Page 3 of 7



PHONE (575) 393-2326 * 101 E. MARLAND * HOBBS, NM 88240

Analytical Results For:

Safety & Environmental Solutions
Bob Allen
703 East Clinton
Hobbs NM, 88240
Fax To: (575) 393-4388

| | | | |
|-------------------|-----------------------|---------------------|---------------|
| Received: | 08/12/2013 | Sampling Date: | 08/12/2013 |
| Reported: | 08/19/2013 | Sampling Type: | Soil |
| Project Name: | INJECTION LINE 2-LEAK | Sampling Condition: | Cool & Intact |
| Project Number: | XTO-13-002 | Sample Received By: | Jodi Henson |
| Project Location: | EMSU-B | | |

Sample ID: SP-1 15' (H301907-03)

| BTEX 8260B | | mg/kg | | Analyzed By: MS | | | | | |
|----------------|--------|-----------------|------------|-----------------|------|------------|---------------|------|-----------|
| Analyte | Result | Reporting Limit | Analyzed | Method Blank | BS | % Recovery | True Value QC | RPD | Qualifier |
| Benzene* | <0.050 | 0.050 | 08/15/2013 | ND | 2.15 | 108 | 2.00 | 3.67 | |
| Toluene* | <0.050 | 0.050 | 08/15/2013 | ND | 2.16 | 108 | 2.00 | 4.83 | |
| Ethylbenzene* | <0.050 | 0.050 | 08/15/2013 | ND | 2.10 | 105 | 2.00 | 4.57 | |
| Total Xylenes* | <0.150 | 0.150 | 08/15/2013 | ND | 6.24 | 104 | 6.00 | 4.81 | |
| Total BTEX | <0.300 | 0.300 | 08/15/2013 | ND | | | | | |

Surrogate: Dibromofluoromethane 94.2 % 61.3-142

Surrogate: Toluene-d8 101 % 71.3-129

Surrogate: 4-Bromofluorobenzene 104 % 65.7-141

| Chloride, SM4500Cl-B | | mg/kg | | Analyzed By: AP | | | | | |
|----------------------|--------|-----------------|------------|-----------------|-----|------------|---------------|------|-----------|
| Analyte | Result | Reporting Limit | Analyzed | Method Blank | BS | % Recovery | True Value QC | RPD | Qualifier |
| Chloride | 1520 | 16.0 | 08/13/2013 | ND | 432 | 108 | 400 | 3.64 | |

| TPH 8015M | | mg/kg | | Analyzed By: DW | | | | | |
|--------------|--------|-----------------|------------|-----------------|-----|------------|---------------|------|-----------|
| Analyte | Result | Reporting Limit | Analyzed | Method Blank | BS | % Recovery | True Value QC | RPD | Qualifier |
| GRO C6-C10 | <10.0 | 10.0 | 08/14/2013 | ND | 183 | 91.5 | 200 | 5.98 | |
| DRO >C10-C28 | <10.0 | 10.0 | 08/14/2013 | ND | 191 | 95.7 | 200 | 6.03 | |

Surrogate: 1-Chlorooctane 93.6 % 63.2-140

Surrogate: 1-Chlorooctadecane 107 % 63.6-154

Cardinal Laboratories

*=Accredited Analyte

PLEASE NOTE: Liability and Damages. Cardinal's liability and clients excludes liability for any claim arising, whether based in contract or tort, shall be limited to the amount paid by client for analysis. All claims, including those for negligence and any other cause whatsoever shall be deemed waived unless made in writing and received by Cardinal within thirty (30) days after completion of the applicable service. In no event shall Cardinal be liable for incidental or consequential damages, including, without limitation, business interruptions, loss of use, or loss of profits incurred by client, its subsidiaries, affiliates or successors arising out of or related to the performance of the services furnished by Cardinal, regardless of whether such claim is based upon any of the above stated reasons or otherwise. Results relate only to the samples identified above. This report shall not be reproduced except in full with written approval of Cardinal Laboratories.

Celey D. Keene, Lab Director/Quality Manager



PHONE (575) 393-2326 • 101 E. MARLAND • HOBBS, NM 88240

Analytical Results For:

Safety & Environmental Solutions
Bob Allen
703 East Clinton
Hobbs NM, 88240
Fax To: (575) 393-4388

| | | | |
|-------------------|-----------------------|---------------------|---------------|
| Received: | 08/12/2013 | Sampling Date: | 08/12/2013 |
| Reported: | 08/19/2013 | Sampling Type: | Soil |
| Project Name: | INJECTION LINE 2-LEAK | Sampling Condition: | Cool & Intact |
| Project Number: | XTO-13-002 | Sample Received By: | Jodi Henson |
| Project Location: | EMSU-B | | |

Sample ID: SP-1 20' (H301907-04)

| BTEX 8260B | | mg/kg | | Analyzed By: MS | | | | | |
|----------------|--------|-----------------|------------|-----------------|------|------------|---------------|------|-----------|
| Analyte | Result | Reporting Limit | Analyzed | Method Blank | BS | % Recovery | True Value QC | RPD | Qualifier |
| Benzene* | <0.050 | 0.050 | 08/15/2013 | ND | 2.15 | 108 | 2.00 | 3.67 | |
| Toluene* | <0.050 | 0.050 | 08/15/2013 | ND | 2.16 | 108 | 2.00 | 4.83 | |
| Ethylbenzene* | <0.050 | 0.050 | 08/15/2013 | ND | 2.10 | 105 | 2.00 | 4.57 | |
| Total Xylenes* | <0.150 | 0.150 | 08/15/2013 | ND | 6.24 | 104 | 6.00 | 4.81 | |
| Total BTEX | <0.300 | 0.300 | 08/15/2013 | ND | | | | | |

Surrogate: Dibromofluoromethane 96.8 % 61.3-142

Surrogate: Toluene-d8 100 % 71.3-129

Surrogate: 4-Bromofluorobenzene 101 % 65.7-141

| Chloride, SM4500Cl-B | | mg/kg | | Analyzed By: AP | | | | | |
|----------------------|--------|-----------------|------------|-----------------|-----|------------|---------------|------|-----------|
| Analyte | Result | Reporting Limit | Analyzed | Method Blank | BS | % Recovery | True Value QC | RPD | Qualifier |
| Chloride | 1650 | 16.0 | 08/13/2013 | ND | 432 | 108 | 400 | 3.64 | |

| TPH 8015M | | mg/kg | | Analyzed By: DW | | | | | |
|--------------|--------|-----------------|------------|-----------------|-----|------------|---------------|------|-----------|
| Analyte | Result | Reporting Limit | Analyzed | Method Blank | BS | % Recovery | True Value QC | RPD | Qualifier |
| GRO C6-C10 | <10.0 | 10.0 | 08/14/2013 | ND | 183 | 91.5 | 200 | 5.98 | |
| DRO >C10-C28 | <10.0 | 10.0 | 08/14/2013 | ND | 191 | 95.7 | 200 | 6.03 | |

Surrogate: 1-Chlorooctane 96.0 % 65.2-140

Surrogate: 1-Chlorooctadecane 109 % 63.6-154

Cardinal Laboratories

*=Accredited Analyte

PLEASE NOTE: Liability and Damages. Cardinal's liability and client's exclusive remedy for any claim arising, whether based in contract or tort, shall be limited to the amount paid by client for analyses. All claims, including those for negligence and any other cause whatsoever shall be deemed waived unless made in writing and received by Cardinal within thirty (30) days after completion of the applicable service. In no event shall Cardinal be liable for incidental or consequential damages, including, without limitation, business interruptions, loss of use, or loss of profits incurred by client, its subsidiaries, affiliates or successors arising out of or related to the performance of the services hereunder by Cardinal, regardless of whether such claim is based upon any of the above stated reasons or otherwise. Results relate only to the samples identified above. This report shall not be reproduced except in full with written approval of Cardinal Laboratories.

Celey D. Keene, Lab Director/Quality Manager



PHONE (575) 393-2326 • 101 E. MARLAND • HOBBS, NM 88240

Notes and Definitions

| | |
|-----|--|
| ND | Analyte NOT DETECTED at or above the reporting limit |
| RPD | Relative Percent Difference |
| ** | Samples not received at proper temperature of 6°C or below. |
| *** | Insufficient time to reach temperature. |
| - | Chloride by SM4500Cl-B does not require samples be received at or below 6°C Samples reported on an as received basis (wet) unless otherwise noted on report |

Cardinal Laboratories

*=Accredited Analyte

PLEASE NOTE: Liability and Damages. Cardinal's liability and client's exclusive remedy for any claim arising, whether based in contract or tort, shall be limited to the amount paid by client for analyses. All claims, including those for negligence and any other cause whatsoever shall be deemed waived unless made in writing and received by Cardinal within thirty (30) days after completion of the applicable service. In no event shall Cardinal be liable for incidental or consequential damages, including, without limitation, business interruptions, loss of use, or loss of profits incurred by client, its subsidiaries, affiliates or successors arising out of or related to the performance of the services hereunder by Cardinal, regardless of whether such claim is based upon any of the above stated reasons or otherwise. Results relate only to the samples identified above. This report shall not be reproduced except in full with written approval of Cardinal Laboratories.

A handwritten signature in black ink, appearing to read "Celey D. Keene".

Celey D. Keene, Lab Director/Quality Manager



ARDINAL LABORATORIES

101 East Marland, Hobbs, NM 88240

(505) 393-2326 Fax (505) 393-2476

CHAIN-OF-CUSTODY AND ANALYSIS REQUEST

Page 1 of 1

| | | | | | | | | | | | | | | | | | |
|---|-------------|-------------------|--------------|-------------|------------|------------------|-----|--------|--------|------------|------------|--------|------|------|------------|------|-----------|
| Company Name: Safety & Environmental Solutions, Inc. | | P.O. #: | | BILL TO | | ANALYSIS REQUEST | | | | | | | | | | | |
| Project Manager: Bob Allen | | Company: Same | | | | | | | | | | | | | | | |
| Address: 703 East Clinton | | Address: | | | | | | | | | | | | | | | |
| City: Hobbs | | City: | | | | | | | | | | | | | | | |
| State: NM Zip: 88240 | | State: | | | | | | | | | | | | | | | |
| Phone #: 575-397-0510 Fax #: 575-393-4388 | | Phone #: | | | | | | | | | | | | | | | |
| Project #: XTO-13-002 Project Owner: John Robinson | | City: | | | | | | | | | | | | | | | |
| Project Name: Injection Line 2 = Leak | | State: | | | | | | | | | | | | | | | |
| Project Location: EMS4-B | | Zip: | | | | | | | | | | | | | | | |
| Sampler Name: David Davis | | Fax #: | | | | | | | | | | | | | | | |
| FOR LAB USE ONLY | | PRESERV | | SAMPLING | | | | | | | | | | | | | |
| Lab I.D. | Sample I.D. | (G)RAB OR (C)OMP. | # CONTAINERS | GROUNDWATER | WASTEWATER | SOIL | OIL | SLUDGE | OTHER: | ACID/BASE: | ICE / COOL | OTHER: | DATE | TIME | TPH = 8015 | BTEX | Chlorides |
| 1301907 | SP-1 5' | X | X | X | X | X | X | X | X | X | X | X | 8-12 | 1000 | X | X | X |
| | 2 SP-1 10' | X | X | X | X | X | X | X | X | X | X | X | 8-12 | 1030 | X | X | X |
| | 3 SP-1 15' | X | X | X | X | X | X | X | X | X | X | X | 8-12 | 1100 | X | X | X |
| | 4 SP-1 20' | X | X | X | X | X | X | X | X | X | X | X | 8-12 | 1130 | X | X | X |
| PLEASE NOTE: Laboratory and field data are the property of the company and are not to be released to the public without the written consent of the company. The company is not responsible for the accuracy of the data provided by the client. The company is not responsible for the accuracy of the data provided by the client. The company is not responsible for the accuracy of the data provided by the client. | | | | | | | | | | | | | | | | | |
| Sampled By: [Signature] Date: 8-12-13 Time: 8:15 | | | | | | | | | | | | | | | | | |
| Received By: [Signature] Date: 8-12-13 Time: 8:15 | | | | | | | | | | | | | | | | | |
| Delivered By: (Circle One) Temp: 52C Sample Condition: Cool / Hot / Yes / No | | | | | | | | | | | | | | | | | |
| Sampler - UPS - Bus - Other: #54 | | | | | | | | | | | | | | | | | |
| Cardinal cannot accept verbal changes. Please fax written changes to 575-393-2476. | | | | | | | | | | | | | | | | | |
| REMARKS: email: davis@sesi-nm.com Phone: 575-390-8841 | | | | | | | | | | | | | | | | | |



PHONE (575) 393-2326 • 101 E. MARLAND • HOBBS, NM 88240

August 26, 2013

Bob Allen

Safety & Environmental Solutions

703 East Clinton

Hobbs, NM 88240

RE: INJECTION LINE 2-LEAK

Enclosed are the results of analyses for samples received by the laboratory on 08/19/13 8:55.

Cardinal Laboratories is accredited through Texas NELAP under certificate number T104704398-11-3. Accreditation applies to drinking water, non-potable water and solid and chemical materials. All accredited analytes are denoted by an asterisk (*). For a complete list of accredited analytes and matrices visit the TCEQ website at www.tceq.texas.gov/field/qa/lab_accred_certif.html.

Cardinal Laboratories is accredited through the State of Colorado Department of Public Health and Environment for:

| | |
|------------------|------------------------------|
| Method EPA 552.2 | Haloacetic Acids (HAA-5) |
| Method EPA 524.2 | Total Trihalomethanes (TTHM) |
| Method EPA 524.4 | Regulated VOCs (V1, V2, V3) |

Accreditation applies to public drinking water matrices.

This report meets NELAP requirements and is made up of a cover page, analytical results, and a copy of the original chain-of-custody. If you have any questions concerning this report, please feel free to contact me.

Sincerely,

Celey D. Keene

Lab Director/Quality Manager



PHONE (575) 393-2326 • 101 E. MARLAND • HOBBS, NM 88240

Analytical Results For:

Safety & Environmental Solutions
Bob Allen
703 East Clinton
Hobbs NM, 88240
Fax To: (575) 393-4388

| | | | |
|-------------------|-----------------------|---------------------|---------------|
| Received: | 08/19/2013 | Sampling Date: | 08/16/2013 |
| Reported: | 08/26/2013 | Sampling Type: | Soil |
| Project Name: | INJECTION LINE 2-LEAK | Sampling Condition: | Cool & Intact |
| Project Number: | XTO-13-002 | Sample Received By: | Jodi Henson |
| Project Location: | EMSU-B | | |

Sample ID: SP-1 25' (H301971-01)

| BTEX #2608 | | mg/kg | | Analyzed By: MS | | | | | |
|----------------|--------|-----------------|------------|-----------------|------|------------|---------------|------|-----------|
| Analyte | Result | Reporting Limit | Analyzed | Method Blank | BS | % Recovery | True Value QC | RPD | Qualifier |
| Benzene* | <0.050 | 0.050 | 08/23/2013 | ND | 2.14 | 107 | 2.00 | 3.91 | |
| Toluene* | <0.050 | 0.050 | 08/23/2013 | ND | 2.12 | 106 | 2.00 | 2.93 | |
| Ethylbenzene* | <0.050 | 0.050 | 08/23/2013 | ND | 2.07 | 103 | 2.00 | 3.59 | |
| Total Xylenes* | <0.150 | 0.150 | 08/23/2013 | ND | 6.21 | 103 | 6.00 | 3.09 | |
| Total BTEX | <0.300 | 0.300 | 08/23/2013 | ND | | | | | |

Surrogate: Dibromofluoromethane 102 % 61.3-142

Surrogate: Toluene-d8 102 % 71.3-129

Surrogate: 4-Bromofluorobenzene 106 % 65.7-141

| Chloride, SM4500Cl-B | | mg/kg | | Analyzed By: AP | | | | | |
|----------------------|--------|-----------------|------------|-----------------|-----|------------|---------------|------|-----------|
| Analyte | Result | Reporting Limit | Analyzed | Method Blank | BS | % Recovery | True Value QC | RPD | Qualifier |
| Chloride | 1470 | 16.0 | 08/21/2013 | ND | 400 | 100 | 400 | 0.00 | |

| TPH #015M | | mg/kg | | Analyzed By: DW | | | | | |
|--------------|--------|-----------------|------------|-----------------|-----|------------|---------------|------|-----------|
| Analyte | Result | Reporting Limit | Analyzed | Method Blank | BS | % Recovery | True Value QC | RPD | Qualifier |
| GRO C6-C10 | <10.0 | 10.0 | 08/21/2013 | ND | 171 | 85.7 | 200 | 5.17 | |
| GRO >C10-C28 | <10.0 | 10.0 | 08/21/2013 | ND | 182 | 90.9 | 200 | 5.05 | |

Surrogate: 1-Chlorooctane 108 % 65.2-140

Surrogate: 1-Chlorooctadecane 136 % 63.6-134

Cardinal Laboratories

*=Accredited Analyte

PLEASE NOTE: Liability and Damages. Cardinal's liability and client's exclusive remedy for any claim arising, whether based in contract or tort, shall be limited to the amount paid by client for analysis. All claims, including those for negligence and any other cause whatsoever shall be waived unless claims made in writing and received by Cardinal within thirty (30) days after completion of the applicable service. Do not expect that Cardinal be liable for incidents or consequential damages, including, without limitation, business interruptions, loss of use, or loss of profits incurred by client, its subsidiaries, affiliates or licensors arising out of or related to the performance of the services provided by Cardinal, regardless of whether such claim is based upon any of the above stated theories or otherwise. Results relate only to the samples identified above. This report shall not be reproduced except in full with written approval of Cardinal Laboratories.

Celey D. Keene, Lab Director/Quality Manager



PHONE (575) 393-2326 • 101 E. MARLAND • HOBBS, NM 88240

Analytical Results For:

Safety & Environmental Solutions
Bob Allen
703 East Clinton
Hobbs NM, 88240
Fax To: (575) 393-4388

Received: 08/19/2013
Reported: 08/26/2013
Project Name: INJECTION LINE 2-LEAK
Project Number: XTO-13-002
Project Location: ENSU-B

Sampling Date: 08/16/2013
Sampling Type: Soil
Sampling Condition: Cool & Intact
Sample Received By: Jodi Henson

Sample ID: SP-1 30' (H301971-02)

| BTX 8260B | | mg/kg | | Analyzed By: MS | | | | | |
|----------------|--------|-----------------|------------|-----------------|------|------------|---------------|------|-----------|
| Analyte | Result | Reporting Limit | Analyzed | Method Blank | BS | % Recovery | True Value QC | RPD | Qualifier |
| Benzene* | <0.050 | 0.050 | 08/23/2013 | ND | 2.14 | 107 | 2.00 | 3.91 | |
| Toluene* | <0.050 | 0.050 | 08/23/2013 | ND | 2.12 | 106 | 2.00 | 2.93 | |
| Ethylbenzene* | <0.050 | 0.050 | 08/23/2013 | ND | 2.07 | 103 | 2.00 | 3.59 | |
| Total Xylenes* | <0.150 | 0.150 | 08/23/2013 | ND | 6.21 | 103 | 6.00 | 3.09 | |
| Total BTX | <0.300 | 0.300 | 08/23/2013 | ND | | | | | |

Surrogate: Dibromofluoromethane 103 % 61.3-142

Surrogate: Toluene-d3 102 % 71.3-129

Surrogate: 4-Bromofluorobenzene 104 % 63.7-141

| Chloride, SM4500C-B | | mg/kg | | Analyzed By: AP | | | | | |
|---------------------|--------|-----------------|------------|-----------------|-----|------------|---------------|------|-----------|
| Analyte | Result | Reporting Limit | Analyzed | Method Blank | BS | % Recovery | True Value QC | RPD | Qualifier |
| Chloride | 1700 | 16.0 | 08/21/2013 | ND | 400 | 100 | 400 | 0.00 | |

| TPH 8015M | | mg/kg | | Analyzed By: DW | | | | | |
|--------------|--------|-----------------|------------|-----------------|-----|------------|---------------|------|-----------|
| Analyte | Result | Reporting Limit | Analyzed | Method Blank | BS | % Recovery | True Value QC | RPD | Qualifier |
| GR0 C6-C10 | <10.0 | 10.0 | 08/21/2013 | ND | 171 | 85.7 | 200 | 5.17 | |
| DRO >C10-C28 | <10.0 | 10.0 | 08/21/2013 | ND | 182 | 90.9 | 200 | 5.05 | |

Surrogate: 1-Chlorooctane 108 % 65.2-140

Surrogate: 1-Chlorooctadecane 131 % 63.6-154

Cardinal Laboratories

* = Accredited Analyte

DISCLAIMER: Liability and Damages. Cardinal's liability and client's exclusive remedy for any claim arising, whether based in contract or tort, shall be limited to the amount paid by client for analysis. All claims, including those for negligence and any other cause whatsoever shall be deemed waived unless made in writing and received by Cardinal within thirty (30) days after completion of the applicable service. In no event shall Cardinal be liable for incidents or consequential damages, including, without limitation, business interruptions, loss of use, or loss of profits incurred by client, its subsidiaries, affiliates or successors arising out of or related to the performance of the services hereunder by Cardinal, regardless of whether such claim is based upon any of the above stated reasons or otherwise. Results relate only to the samples identified above. This report shall not be reproduced except in full with written approval of Cardinal Laboratories.

Celey D. Keene, Lab Director/Quality Manager



PHONE (575) 393-2326 • 101 E. MARLAND • HOBBS, NM 88240

Analytical Results For:

Safety & Environmental Solutions
Bob Allen
703 East Clinton
Hobbs NM, 88240
Fax To: (575) 393-4388

Received: 08/19/2013
Reported: 08/26/2013
Project Name: INJECTION LINE 2-LEAK
Project Number: XTO-13-002
Project Location: EMSU-B

Sampling Date: 08/16/2013
Sampling Type: Soil
Sampling Condition: Cool & Intact
Sample Received By: Jodi Henson

Sample ID: SP-1 35' (H301971-03)

| BTEX 8260B | | mg/kg | | Analyzed By: MS | | | | | |
|----------------|--------|-----------------|------------|-----------------|------|------------|---------------|------|-----------|
| Analyte | Result | Reporting Limit | Analyzed | Method Blank | BS | % Recovery | True Value QC | RPD | Qualifier |
| Benzene* | <0.050 | 0.050 | 08/23/2013 | NO | 2.14 | 107 | 2.00 | 3.91 | |
| Toluene* | <0.050 | 0.050 | 08/23/2013 | NO | 2.12 | 106 | 2.00 | 2.93 | |
| Ethylbenzene* | <0.050 | 0.050 | 08/23/2013 | NO | 2.07 | 103 | 2.00 | 3.59 | |
| Total Xylenes* | <0.150 | 0.150 | 08/23/2013 | NO | 6.21 | 103 | 6.00 | 3.09 | |
| Total BTEX | <0.300 | 0.300 | 08/23/2013 | NO | | | | | |

Surrogate: Dibromofluoromethane 103 % 61.3-142

Surrogate: Toluene-d8 101 % 71.3-129

Surrogate: 4-Bromofluorobenzene 104 % 65.7-141

| Chloride, SM4500Cl-B | | mg/kg | | Analyzed By: AP | | | | | |
|----------------------|--------|-----------------|------------|-----------------|-----|------------|---------------|------|-----------|
| Analyte | Result | Reporting Limit | Analyzed | Method Blank | BS | % Recovery | True Value QC | RPD | Qualifier |
| Chloride | 1330 | 16.0 | 08/21/2013 | NO | 400 | 100 | 400 | 0.00 | |

| TPH 8015M | | mg/kg | | Analyzed By: DW | | | | | |
|--------------|--------|-----------------|------------|-----------------|-----|------------|---------------|------|-----------|
| Analyte | Result | Reporting Limit | Analyzed | Method Blank | BS | % Recovery | True Value QC | RPD | Qualifier |
| GRO C6-C10 | <10.0 | 10.0 | 08/21/2013 | NO | 171 | 85.7 | 200 | 5.17 | |
| DRO >C10-C28 | <10.0 | 10.0 | 08/21/2013 | NO | 182 | 90.9 | 200 | 5.05 | |

Surrogate: 1-Chlorooctane 90.4 % 65.2-140

Surrogate: 1-Chlorooctadecane 114 % 65.6-154

Cardinal Laboratories

* - Accredited Analyte

DISCLAIMER: Liability and Damages: Cardinal's liability and client's exclusive remedy for any claim arising, whether based in contract or tort, shall be limited to the amount paid by client for analysis. All claims, including those for negligence and any other cause whatsoever shall be deemed waived unless made in writing and received by Cardinal within thirty (30) days after completion of the applicable service. It is not agreed that Cardinal be liable for incidental or consequential damages, including, without limitation, business interruptions, loss of time, or loss of profits incurred by client, its subsidiaries, affiliates or successors arising out of or related to the performance of the services hereunder by Cardinal, regardless of whether such claim is based upon any of the above stated causes or otherwise. Results made only to the company identified above. This report shall not be reproduced except in full with written approval of Cardinal Laboratories.

Celey D. Keene, Lab Director/Quality Manager

Notes and Definitions

| | |
|-----|--|
| ND | Analyte NOT DETECTED at or above the reporting limit |
| RPD | Relative Percent Difference |
| ** | Samples not received at proper temperature of 6°C or below. |
| *** | Insufficient time to reach temperature. |
| - | Chloride by SM4500Cl-B does not require samples be received at or below 6°C Samples reported on an as received basis (wet) unless otherwise noted on report |

Cardinal Laboratories

* = Accredited Analyte

PLEASE NOTE: Liability and Damages. Cardinal's liability and client's exclusive remedy for any claim arising, whether based in contract or tort, shall be limited to the amount paid by client for analysis. All claims, including those for negligence and any other cause whatsoever shall be deemed waived unless made in writing and received by Cardinal within thirty (30) days after completion of the applicable service. In no event shall Cardinal be liable for incidental or consequential damages, including, without limitation, business interruptions, loss of use, or loss of profits incurred by client, its subsidiaries, affiliates or successors arising out of or related to the performance of the SERVICE hereunder by Cardinal, regardless of whether such claim is based upon any of the above stated reasons or otherwise. Results relate only to the samples identified above. This report shall not be reproduced except in full with written approval of Cardinal Laboratories.



Celey D. Keene, Lab Director/Quality Manager



ARDINAL LABORATORIES

101 East Merland, Hobbs, NM 88240
(505) 393-2328 Fax (505) 393-2476

CHAIN-OF-CUSTODY AND ANALYSIS REQUEST

| | | | | | | | |
|--|--|------------------------------|--|----------------------|--|----------------------|--|
| Company Name: Safety & Environmental Solutions, Inc. | | P.O. # | | BILL TO | | ANALYSIS REQUEST | |
| Project Manager: Rob Allen | | City: Hobbs | | State: NM Zip: 88240 | | Address: Same | |
| Address: 703 East Clinton | | City: Hobbs | | State: NM Zip: 88240 | | Address: Same | |
| Phone #: 575-397-0510 | | Fax #: 575-393-4388 | | City: Hobbs | | State: NM Zip: 88240 | |
| Project #: XTO-13-002 | | Project Owner: John Robinson | | City: Hobbs | | State: NM Zip: 88240 | |
| Project Name: Fwy. Line #2 | | City: Hobbs | | State: NM Zip: 88240 | | Address: Same | |
| Project Location: Fwy. Line #2 | | City: Hobbs | | State: NM Zip: 88240 | | Address: Same | |
| Sample Name: David Davis | | City: Hobbs | | State: NM Zip: 88240 | | Address: Same | |
| Sample ID: H301971 | | City: Hobbs | | State: NM Zip: 88240 | | Address: Same | |
| Lab I.D. Sample I.D. | | City: Hobbs | | State: NM Zip: 88240 | | Address: Same | |
| 1 SP-1 2.5' | | City: Hobbs | | State: NM Zip: 88240 | | Address: Same | |
| 2 SP-1 30' | | City: Hobbs | | State: NM Zip: 88240 | | Address: Same | |
| 3 SP-1 35' | | City: Hobbs | | State: NM Zip: 88240 | | Address: Same | |
| Date: 8-16 | | City: Hobbs | | State: NM Zip: 88240 | | Address: Same | |
| Time: 12:00 | | City: Hobbs | | State: NM Zip: 88240 | | Address: Same | |
| Received By: David Davis | | City: Hobbs | | State: NM Zip: 88240 | | Address: Same | |
| Delivered By: (Circle One) | | City: Hobbs | | State: NM Zip: 88240 | | Address: Same | |
| Sample - UPS - Blue - Other: | | City: Hobbs | | State: NM Zip: 88240 | | Address: Same | |
| 4.70 | | City: Hobbs | | State: NM Zip: 88240 | | Address: Same | |
| #54 | | City: Hobbs | | State: NM Zip: 88240 | | Address: Same | |
| 575-390-8541 | | City: Hobbs | | State: NM Zip: 88240 | | Address: Same | |



PHONE (575) 393-2326 • 101 E. MARLAND • HOBBS, NM 88240

December 18, 2013

Bob Allen
Safety & Environmental Solutions
703 East Clinton
Hobbs, NM 88240

RE: EMSU B INJ LINE #2

Enclosed are the results of analyses for samples received by the laboratory on 12/11/13 16:45.

Cardinal Laboratories is accredited through Texas NELAP under certificate number T104704398-13-5. Accreditation applies to drinking water, non-potable water and solid and chemical materials. All accredited analytes are denoted by an asterisk (*). For a complete list of accredited analytes and matrices visit the TCEQ website at www.tceq.texas.gov/field/qa/lab_accrred_certif.html.

Cardinal Laboratories is accredited through the State of Colorado Department of Public Health and Environment for:

| | |
|------------------|------------------------------|
| Method EPA 552.2 | Haloacetic Acids (HAA-5) |
| Method EPA 524.2 | Total Trihalomethanes (TTHM) |
| Method EPA 524.4 | Regulated VOCs (V1, V2, V3) |

Accreditation applies to public drinking water matrices.

This report meets NELAP requirements and is made up of a cover page, analytical results, and a copy of the original chain-of-custody. If you have any questions concerning this report, please feel free to contact me.

Sincerely,

Celey D. Keene
Lab Director/Quality Manager



PHONE (575) 393-2326 • 101 E. MARLAND • HOBBS, NM 88240

Analytical Results For:

Safety & Environmental Solutions
Bob Allen
703 East Clinton
Hobbs NM, 88240
Fax To: (575) 393-4388

| | | | |
|-------------------|--------------------|---------------------|---------------|
| Received: | 12/11/2013 | Sampling Date: | 12/10/2013 |
| Reported: | 12/18/2013 | Sampling Type: | Soil |
| Project Name: | EH5U B INJ LINE #2 | Sampling Condition: | Cool & Intact |
| Project Number: | XT0-13-002 | Sample Received By: | Jodi Henson |
| Project Location: | HONUMENT, NM | | |

Sample ID: BH-1, 40 FT (H302998-01)

| Chloride, SM4500Cl-B | | mg/kg | | Analyzed By: AP | | | | | | |
|----------------------|--------|-----------------|------------|-----------------|-----|------------|---------------|------|-----------|--|
| Analyte | Result | Reporting Limit | Analyzed | Method Blank | BS | % Recovery | True Value QC | RPD | Qualifier | |
| Chloride | 1570 | 16.0 | 12/18/2013 | ND | 416 | 104 | 400 | 3.92 | | |

Sample ID: BH-1, 45 FT (H302998-02)

| Chloride, SM4500Cl-B | | mg/kg | | Analyzed By: AP | | | | | |
|----------------------|--------|-----------------|------------|-----------------|-----|------------|---------------|------|-----------|
| Analyte | Result | Reporting Limit | Analyzed | Method Blank | BS | % Recovery | True Value QC | RPD | Qualifier |
| Chloride | 1880 | 16.0 | 12/18/2013 | ND | 416 | 104 | 400 | 3.92 | |

Cardinal Laboratories

*=Accredited Analyte

DISCLAIMER: Liability and Damages. Cardinal's liability and client's exclusive remedy for any claim arising, whether based in contract or tort, shall be limited to the amount paid by client for analysis. All claims, including those for negligence and any other cause whatsoever shall be deemed waived unless made in writing and received by Cardinal within thirty (30) days after completion of the applicable service. In no event shall Cardinal be liable for incidental or consequential damages, including, without limitation, business interruptions, loss of use, or loss of profits incurred by client, its subsidiaries, affiliates or successors arising out of or related to the performance of the services hereunder by Cardinal, regardless of whether such claim is based upon any of the above stated reasons or otherwise. Results relate only to the samples identified above. This report shall not be reproduced except in full with written approval of Cardinal Laboratories.

Coley D. Keene, Lab Director/Quality Manager

Notes and Definitions

| | |
|-----|---|
| ND | Analyte NOT DETECTED at or above the reporting limit. |
| RPD | Relative Percent Difference |
| ** | Samples not received at proper temperature of 6°C or below. |
| *** | Insufficient time to reach temperature. |
| - | Chloride by SM4500C-B does not require samples be received at or below 6°C. Samples reported on an as received basis (wet) unless otherwise noted on report. |

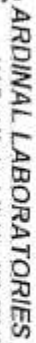
Cardinal Laboratories

* = Accredited Analyte

PLEASE NOTE: Liability and Damages. Cardinal's liability and client's exclusive remedy for any claim arising, whether based in contract or tort, shall be limited to the amount paid to client for analysis. All claims, including those for negligence and any other cause whatsoever shall be deemed waived unless made in writing and received by Cardinal within thirty (30) days after completion of the applicable service. It is agreed that Cardinal be liable for incidental or consequential damages, including, without limitation, business interruptions, loss of rent, or loss of profits incurred by client, its subsidiaries, affiliates or successors arising out of or related to the performance of the services hereunder by Cardinal, regardless of whether such claim is based upon any of the above stated reasons or otherwise. Results relate only to the samples identified above. This report shall not be reproduced except in full with written approval of Cardinal Laboratories.



Celey D. Keene, Lab Director/Quality Manager



CHAIN-OF-CUSTODY AND ANALYSIS REQUEST

101 East Maryland, Hobbs, NM 88240
(505) 393-2326 Fax (505) 393-2476

Page 1 of 1

[illegible]



PHONE (575) 393-2326 • 101 E. MARLAND • HOBBS, NM 88240

March 26, 2014

Bob Allen

Safety & Environmental Solutions

703 East Clinton

Hobbs, NM 88240

RE: EMSU B INJ LINE #2

Enclosed are the results of analyses for samples received by the laboratory on 03/20/14 12:35.

Cardinal Laboratories is accredited through Texas NELAP under certificate number T104704398-13-5. Accreditation applies to drinking water, non-potable water and solid and chemical materials. All accredited analytes are denoted by an asterisk (*). For a complete list of accredited analytes and matrices visit the TCEQ website at www.tceq.texas.gov/field/qa/lab_accred_certif.html.

Cardinal Laboratories is accredited through the State of Colorado Department of Public Health and Environment for:

| | |
|------------------|------------------------------|
| Method EPA 552.2 | Haloacetic Acids (HAA-5) |
| Method EPA 524.2 | Total Trihalomethanes (TTHM) |
| Method EPA 524.4 | Regulated VOCs (V1, V2, V3) |

Accreditation applies to public drinking water matrices.

This report meets NELAP requirements and is made up of a cover page, analytical results, and a copy of the original chain-of-custody. If you have any questions concerning this report, please feel free to contact me.

Sincerely,

Celey D. Keene

Lab Director/Quality Manager



PHONE (575) 393-2326 * 101 E. MARLAND * HOBBS, NM 88240

Analytical Results For:

Safety & Environmental Solutions
Bob Allen
703 East Clinton
Hobbs NM, 88240
Fax To: (575) 393-4388

Received: 03/20/2014
Reported: 03/26/2014
Project Name: EMSU B INJ LINE #2
Project Number: XT0-13-002
Project Location: MONUMENT, NM

Sampling Date: 03/19/2014
Sampling Type: Soil
Sampling Condition: Cool & Intact
Sample Received By: Jodi Henson

Sample ID: PT. 5 @ 3' BGS (H400845-05)

| Chloride, SM4500Cl-B | | mg/kg | | Analyzed By: AP | | | | | |
|----------------------|--------|-----------------|------------|-----------------|-----|------------|---------------|------|-----------|
| Analyte | Result | Reporting Limit | Analyzed | Method Blank | BS | % Recovery | True Value QC | RPD | Qualifier |
| Chloride | 1070 | 16.0 | 03/26/2014 | ND | 432 | 108 | 400 | 3.77 | |

Sample ID: PT. 6 @ 3' BGS (H400845-06)

| Chloride, SM4500Cl-B | | mg/kg | | Analyzed By: AP | | | | | |
|----------------------|--------|-----------------|------------|-----------------|-----|------------|---------------|------|-----------|
| Analyte | Result | Reporting Limit | Analyzed | Method Blank | BS | % Recovery | True Value QC | RPD | Qualifier |
| Chloride | <16.0 | 16.0 | 03/26/2014 | ND | 432 | 108 | 400 | 3.77 | |

Sample ID: PT. 7 @ 3' BGS (H400845-07)

| Chloride, SM4500Cl-B | | mg/kg | | Analyzed By: AP | | | | | |
|----------------------|--------|-----------------|------------|-----------------|-----|------------|---------------|------|-----------|
| Analyte | Result | Reporting Limit | Analyzed | Method Blank | BS | % Recovery | True Value QC | RPD | Qualifier |
| Chloride | 1410 | 16.0 | 03/26/2014 | ND | 432 | 108 | 400 | 3.77 | |

Sample ID: PT. 8 @ 3' BGS (H400845-08)

| Chloride, SM4500Cl-B | | mg/kg | Analyzed By: AP | | | | | | |
|----------------------|--------|-----------------|-----------------|--------------|-----|------------|---------------|------|-----------|
| Analyte | Result | Reporting Limit | Analyzed | Method Blank | BS | % Recovery | True Value QC | RPD | Qualifier |
| Chloride | 992 | 16.0 | 03/26/2014 | ND | 432 | 108 | 400 | 3.77 | |

Sample ID: PT. 9 @ 3' BGS (H400845-09)

| Chloride, SM4500Cl-B | | mg/kg | | Analyzed By: AP | | | | | | |
|----------------------|--------|-----------------|------------|-----------------|-----|------------|---------------|------|-----------|--|
| Analyte | Result | Reporting Limit | Analyzed | Method Blank | BS | % Recovery | True Value QC | RPD | Qualifier | |
| Chloride | 32.0 | 16.0 | 03/26/2014 | ND | 432 | 108 | 400 | 3.77 | | |

Cardinal Laboratories

* - Accredited Analyte

PLEASE NOTE: Liability and Damages: Cardinal's liability and client's exclusive remedy for any claim arising, whether based in contract or tort, shall be limited to the amount paid by client for analysis. All claims, including those for negligence and any other cause whatsoever shall be deemed waived unless made in writing and received by Cardinal within thirty (30) days after completion of the applicable service. It is agreed that Cardinal be held harmless for incidental or consequential damages, including without limitation, business interruptions, loss of use, or loss of profits incurred by client, its subsidiaries, affiliates or customers arising out of or related to the performance of the services rendered by Cardinal, regardless of whether such claim is based upon any of the above stated reasons or otherwise. Results relate only to the samples identified above. This report shall not be reproduced except in full with written approval of Cardinal Laboratories.

Celey D. Keene, Lab Director/Quality Manager



PHONE (575) 393-2326 * 101 E. MARLAND * HOBBS, NM 88240

Analytical Results For:

Safety & Environmental Solutions
Bob Allen
703 East Clinton
Hobbs NM, 88240
Fax To: (575) 393-4388

| | | | |
|-------------------|--------------------|---------------------|---------------|
| Received: | 03/20/2014 | Sampling Date: | 03/19/2014 |
| Reported: | 03/26/2014 | Sampling Type: | Soil |
| Project Name: | EMSU B INJ LINE #2 | Sampling Condition: | Cool & Intact |
| Project Number: | XT0-13-002 | Sample Received By: | Jodi Henson |
| Project Location: | MONUMENT, NM | | |

Sample ID: PT. 10 @ 5' BGS INSIDE HOLE (H400845-10)

| Chloride, SM4500Cl-B | | mg/kg | | Analyzed By: AP | | | | | |
|----------------------|--------|-----------------|------------|-----------------|-----|------------|---------------|------|-----------|
| Analyte | Result | Reporting Limit | Analyzed | Method Blank | BS | % Recovery | True Value QC | RPD | Qualifier |
| Chloride | 96.0 | 16.0 | 03/26/2014 | ND | 432 | 108 | 400 | 3.77 | |

Cardinal Laboratories

* - Accredited Analyte

PLEASE NOTE: Liability and Damages: Cardinal's liability and client's exclusive remedy for any claim arising, whether based in contract or tort, shall be limited to the amount paid by client for analyses. All claims, including those for negligence and any other claim whatsoever shall be deemed waived unless made in writing and received by Cardinal within thirty (30) days after completion of the applicable service. In no event shall Cardinal be liable for incidental or consequential damages, including, without limitation, business interruptions, loss of use, or loss of profits incurred by client, its subsidiaries, affiliates or successors arising out of or related to the performance of the services hereunder by Cardinal, regardless of whether such claim is based upon any of the above stated reasons or otherwise. Results relate only to the samples identified above. This report shall not be reproduced except in full with written approval of Cardinal Laboratories.

Celey D. Keene, Lab Director/Quality Manager

Notes and Definitions

| | |
|-----|--|
| ND | Analyte NOT DETECTED at or above the reporting limit |
| RPD | Relative Percent Difference |
| ** | Samples not received at proper temperature of 6°C or below. |
| *** | Insufficient time to reach temperature. |
| - | Chloride by SM4500Cl-B does not require samples be received at or below 6°C Samples reported on an as received basis (wet) unless otherwise noted on report |

Cardinal Laboratories

*-Accredited Analyte

PLEASE NOTE: Liability and Damages. Cardinal's liability and client's exclusive remedy for any claim arising, whether based in contract or tort, shall be limited to the amount paid by client for analyses. All claims, including those for negligence and any other cause whatsoever shall be deemed waived unless made in writing and received by Cardinal within thirty (30) days after completion of the applicable service. In no event shall Cardinal be liable for incidental or consequential damages, including, without limitation, business interruptions, loss of use, or loss of profits incurred by client, its subsidiaries, affiliates or successors arising out of or related to the performance of the services hereunder by Cardinal, regardless of whether such claim is based upon any of the above stated reasons or otherwise. Results relate only to the samples identified above. This report shall not be reproduced except in full with written approval of Cardinal Laboratories.



Celey D. Keene, Lab Director/Quality Manager



CHAIN-OF-CUSTODY AND ANALYSIS REQUEST

101 East Maryland, Hobbs, NM 88240

(406) 393-2326 Fax (505) 393-2476

BILLYO

ANALYSIS REQUEST

Page 1 of 1

Page 6 of 6

[illegible]

Appendix C

Site Photos



Photo #1 – Release Point



Photo #2 – South



Photo #3 – North



Photo #4 – North



Photo #5– North

Appendix D

C-141

District I
1625 N. French Dr., Hobbs, NM 88240
District II
811 S. First St., Artesia, NM 88210
District III
1000 Rio Brazos Road, Aztec, NM 87410
District IV
1220 S. St. Francis Dr., Santa Fe, NM 87505

State of New Mexico
Energy Minerals and Natural Resources

Oil Conservation Division
1220 South St. Francis Dr.
Santa Fe, NM 87505

Form C-141
Revised August 8, 2011

Submit 1 Copy to appropriate District Office in
accordance with 19.15.29 NMAC.

Release Notification and Corrective Action

OPERATOR

☒ Initial Report ☐ Final Report

| | |
|--|-------------------------------------|
| Name of Company <u>XPO</u> | Contact <u>John Robinson</u> |
| Address | Telephone No. <u>575-441-5199</u> |
| Facility Name <u>EMSV 0 INJ Line 2</u> | Facility Type <u>Injection Line</u> |

| | | |
|--------------------------------|---------------|---------------------------|
| Surface Owner <u>Fay Klein</u> | Mineral Owner | API No. <u>3002504262</u> |
|--------------------------------|---------------|---------------------------|

LOCATION OF RELEASE

| | | | | | | | | |
|----------------------|-------------------|---------------------|------------------|--------------------------|---------------------------|---------------------------|----------------------------|-------------------|
| Unit Letter <u>B</u> | Section <u>14</u> | Township <u>20S</u> | Range <u>36E</u> | Feet from the <u>330</u> | North/South Line <u>N</u> | Feet from the <u>1650</u> | East/West Line <u>East</u> | County <u>Lea</u> |
|----------------------|-------------------|---------------------|------------------|--------------------------|---------------------------|---------------------------|----------------------------|-------------------|

Latitude 32.577816 Longitude 103.322627

NATURE OF RELEASE

| | | |
|--|--|---|
| Type of Release <u>Oil Spill</u> | Volume of Release <u>10881</u> | Volume Recovered <u>0.001</u> |
| Source of Release <u>INT Line</u> | Date and Hour of Occurrence | Date and Hour of Discovery <u>Aug 6th 12:00pm</u> |
| Was Immediate Notice Given? <input checked="" type="checkbox"/> Yes <input type="checkbox"/> No <input type="checkbox"/> Not Required | If YES, To Whom? <u>Left Message on OCO Phone</u> | |
| By Whom? <u>John Robinson</u> | Date and Hour <u>Aug 6 4 PM</u> | |
| Was a Watercourse Reached? <input type="checkbox"/> Yes <input checked="" type="checkbox"/> No | If YES, Volume Impacting the Watercourse. | |

If a Watercourse was impacted, Describe Fully.*

GW @ 37'

Describe Cause of Problem and Remedial Action Taken.*

Leak in Int Line - No action Taken yet
SESL will submit Plan to Remediate

Describe Area Affected and Cleanup Action Taken.*

Pasture - No action Taken yet

I hereby certify that the information given above is true and complete to the best of my knowledge and understand that pursuant to NMOCD rules and regulations all operators are required to report and/or file certain release notifications and perform corrective actions for releases which may endanger public health or the environment. The acceptance of a C-141 report by the NMOCD marked as "Final Report" does not relieve the operator of liability should their operations have failed to adequately investigate and remediate contamination that pose a threat to ground water, surface water, human health or the environment. In addition, NMOCD acceptance of a C-141 report does not relieve the operator of responsibility for compliance with any other federal, state, or local laws and/or regulations.

| | | |
|--|--|-----------------------------------|
| Signature: <u>John Robinson</u> | OIL CONSERVATION DIVISION | |
| Printed Name: <u>John Robinson</u> | Approved by Environmental Specialist: <u>Jeffrey Sekim</u> Environmental Specialist | |
| Title: <u>Maintenance Foreman</u> | Approval Date: <u>8-8-13</u> | Expiration Date: <u>10-8-13</u> |
| E-mail Address: <u>john.robinson@xpoenergy.com</u> | Conditions of Approval: <u>Submit Final</u> | Attached <input type="checkbox"/> |
| Date: <u>8-7-13</u> Phone: <u>575-441-5199</u> | C-141 BY <u>10-8-13</u> | <u>18P-8-13-2942</u> |

* Attach Additional Sheets If Necessary