

Basin Environmental Service Technologies, LLC

3100 Plains Highway
P. O. Box 301
Lovington, New Mexico 88260

jwlowry@basinenv.com

Office: (575) 396-2378

Fax: (575) 396-1429



REMEDIATION SUMMARY & SITE CLOSURE REQUEST

**SOUTHERN UNION GAS SERVICES
WEST EUNICE COMPRESSOR STATION
HISTORICAL RELEASE SITE**

Lea County, New Mexico

Unit Letter "P" (SE/SE), Section 36, Township 21 South, Range 36 East

Latitude 32° 25' 45.29" North, Longitude 103° 12' 38.84" West

NMOCD Reference # 1RP-2724

Prepared For:

Southern Union Gas Services
801 S. Loop 464
Monahans, TX 79756

Prepared By:

Basin Environmental Service Technologies, LLC
3100 Plains Highway
Lovington, New Mexico 88260

March 2013

Joel W. Lowry
Project Manager

TABLE OF CONTENTS

1.0 INTRODUCTION.....	1
2.0 NMOC SITE CLASSIFICATION.....	1
3.0 SUMMARY OF SOIL REMEDIATION ACTIVITIES.....	2
4.0 QA/QC PROCEDURES.....	3
4.1 Soil Sampling.....	3
4.2 Decontamination of Equipment.....	3
4.3 Laboratory Protocol.....	3
5.0 SITE CLOSURE REQUEST.....	2
6.0 LIMITATIONS.....	4
7.0 DISTRIBUTION.....	5

FIGURES

Figure 1 – Site Location Map

Figure 2 – Site & Sample Location Map

TABLES

Table 1 – Concentrations of Benzene, BTEX, TPH & Chloride in Soil

APPENDICES

Appendix A – Photographs

Appendix B – Laboratory Analytical Reports

Appendix C – Release Notification and Corrective Action (Form C-141)

1.0 INTRODUCTION & BACKGROUND INFORMATION

Basin Environmental Service Technologies, LLC (Basin), on behalf of Southern Union Gas Services (Southern Union), has prepared this *Remediation Summary & Site Closure Request* for the West Eunice Compressor Historical Release Site (1RP-2724). The legal description of the release site is Unit Letter "P" (SE/SE), Section 36, Township 21 South, Range 36 East, in Lea County, New Mexico. The geographic coordinates of the release site are 32° 45.29" North latitude and 103° 12' 38.84" West longitude. The property affected by the release is owned by Southern Union Gas Services. Please reference Figure 1 for a "Site Location Map".

On July 13, 2011, Southern Union discovered a release had occurred at the West Eunice Compressor Station. The "Release Notification and Corrective Action Form" (Form C-141) indicated failure of a sump pump resulted in the release of approximately twelve barrels (12 bbls) of lubricating oil and wash water. During initial response activities, a vacuum truck was utilized to recover approximately nine and one half barrels (9.5 bbls) of free standing fluid. A backhoe was utilized to scrape up the heavily saturated soil; in sensitive areas of the facility, the saturated soil was "hand dug". Excavated material was transported to Sundance Services, Inc. (NMOCD Permit # NM-01-003) for disposal. The release was reported to the New Mexico Oil Conservation Division (NMOCD) Hobbs District Office on July 18, 2011. The C-141 indicated the release affected an area measuring approximately fifteen feet (15') in width and one hundred and fifty feet (150') in length within the compressor facility. General photographs of the release site are provided as Appendix A. The Form C-141 is provided as Appendix C.

On June 22, 2012, at the request of Southern Union, Basin assumed remediation responsibilities at the West Eunice Compressor Station Historical Release Site.

2.0 NMOCD SITE CLASSIFICATION

A search of the New Mexico Water Rights Reporting System (NMWRRS) database maintained by the New Mexico Office of the State Engineer (NMOSE) indicated information was unavailable for Section 36, Township 21 South, Range 36 East. An inferred groundwater gradient map utilized by the NMOCD indicated groundwater should be encountered at one hundred and ten feet (110') bgs. Based on the NMOCD ranking system, zero (0) points will be assigned to the site as a result of this criterion.

A search of the NMWRRS database indicated there are no water wells within one thousand feet (1,000') of the release. Based on the NMOCD ranking system, zero (0) points will be assigned to the site as a result of this criterion.

There are no surface water bodies within one thousand feet (1,000') of the release. Based on the NMOCD ranking system, zero (0) points will be assigned to the site as a result of this criterion.

NMOCD guidelines indicate the West Eunice Compressor Station Historical Release Site has an initial ranking score of zero (0) points. The soil remediation levels for a site with a ranking score of zero (0) points are as follows:

- Benzene – 10 mg/Kg (ppm)

- Benzene, toluene, ethylbenzene and xylene (BTEX) – 50 mg/Kg (ppm)
- Total petroleum hydrocarbons (TPH) – 5,000 mg/Kg (ppm)

The New Mexico Administrative Code (NMAC) does not currently specify a remediation level for chloride concentrations in soil. Chloride remediation levels are set by the NMOCD on a site-specific basis.

3.0 SUMMARY OF SOIL REMEDIATION ACTIVITIES

On January 31, 2013, Basin responded to the West Eunice Compressor Station Historical Release Site. An initial investigation indicated previous remediation activities had been conducted at the release site. Historical environmental records and the initial Form C-141 indicate an unknown volume of impacted soil was transported to Sundance Services, Inc., for disposal.

A representative grid was established east of the affected sump pump in an effort to determine if soil containing concentrations of TPH or chloride above NMOCD regulatory remediation action levels remained in-situ. A hand-auger was utilized to collect soil samples from nine (9) locations (SB-1 through SB-9) east of the affected sump pump. During the advancement of soil bores, soil samples were collected at six inches (6”), two feet (2’), four feet (4’) and six feet (6’) bgs. Soil samples collected at six inches (6”) and four feet (4’) bgs were and submitted to Xenco Laboratories., of Odessa, Texas, for determination of TPH and chloride concentrations in accordance with EPA Methods SW 846-8015M and 300/300.1, respectively. Laboratory analytical results indicated TPH concentrations were less than the laboratory MDL for each of the soil samples submitted with the exception of soil sample SB-1 @ 4’, which had a concentration of 44.0 mg/Kg; SB-3 @ 6”, which had a concentration of 98.3 mg/Kg; SB-4 @ 6”, which had a concentration of 70.9 mg/Kg; SB-5 @ 6”, which had a concentration of 22.2 mg/Kg; and SB-8 @ 6”, which had a concentration of 82.8 mg/Kg. Chloride concentrations ranged from 1.22 mg/Kg for soil sample SB-1 @ 4’ to 37.0 mg/Kg for soil sample SB-7 @ 6”. TPH and chloride concentrations were less than NMOCD regulatory standards in each of the submitted soil samples. Table 1 summarizes the “Concentrations of Benzene, BTEX, TPH & Chloride in Soil”. Soil sample locations are depicted in Figure 2, “Site & Sample Location Map”. Laboratory analytical reports are provided as Appendix B.

Seven (7) additional soil bore locations (SB-10 through SB-16) were established within the inferred release flow path along the eastern boundary of the compressor station facility. During the advancement of soil bores, soil samples were collected at six inches (6”), two feet (2’), four feet (4’) and six feet (6’) bgs. Soil samples collected at six inches (6”) and four feet (4’) bgs were and submitted to the laboratory for analysis of TPH and chloride concentrations. Laboratory analytical results indicated TPH concentrations were less than the laboratory MDL for each of the soil samples submitted with the exception of soil sample SB-10 @ 6”, which had a concentration of 23.2 mg/Kg; SB-13 @ 6”, which had a concentration of 31.8 mg/Kg; and SB-14 @ 6”, which had a concentration of 1,290 mg/Kg. Analytical results indicated chloride concentrations ranged from less than the appropriate laboratory MDL for soil samples SB-11 @ 6”, SB-13 @ 6”, SB-15 @ 6” and SB-16 @ 6” to 30.3 mg/Kg for soil sample SB-14 @ 4”

Upon receiving laboratory analytical results from each of the submitted soil samples, soil samples collected at two feet (2') bgs and six feet (6') bgs from SB-14 were submitted to the laboratory for analysis of TPH and chloride concentrations. Laboratory analytical results indicated TPH concentrations were less than the appropriate laboratory MDL for each of the submitted soil samples. Analytical results indicated the chloride concentration was 3.53 mg/Kg for soil sample SB-14 @ 2' and 55.5 mg/Kg for soil sample SB-14 @ 6'.

On March 8, 2013, one (1) confirmation soil sample (SB-14a) was collected in the area represented by soil bore SB-14 and submitted to the laboratory for analysis of BTEX concentrations. Analytical results indicated the BTEX concentration was less than the laboratory MDL. BTEX, TPH and chloride concentrations were less than NMOCD regulatory standards in each of the submitted soil samples.

4.0 QA/QC PROCEDURES

4.1 Soil Sampling

Soil samples were delivered to Xenco Laboratories., of Odessa, Texas, for BTEX, TPH, and/or chloride analyses using the methods described below:

- BTEX concentrations in accordance with EPA Method SW-846 8021b
- TPH concentrations in accordance with modified EPA Method SW-846 8015M
- Chloride concentrations in accordance with EPA Method 300/300.1

4.2 Decontamination of Equipment

Cleaning of the sampling equipment was the responsibility of the environmental technician. Prior to use, and between each sample, the sampling equipment was cleaned with Liqui-Nox® detergent and rinsed with distilled water.

4.3 Laboratory Protocol

The laboratory was responsible for proper QA/QC procedures after signing the chain-of-custody form(s). These procedures were either transmitted with the laboratory reports or are on file at the laboratory.

5.0 SITE CLOSURE REQUEST

Confirmation soil samples collected from the sixteen (16) on-site soil bores indicated remediation activities conducted during initial response activities at the West Eunice Compressor Historical Release Site met the requirements of the NMOCD's "Guidelines for Remediation of Leaks, Spills and Releases". Laboratory analytical results indicated benzene, BTEX, TPH and chloride concentrations were less than NMOCD regulatory standards in each of the submitted soil samples. Based on these laboratory analytical results, Basin recommends Southern Union provide the NMOCD Hobbs District Office a copy of this *Remediation Summary & Site Closure Request* and request the NMOCD grant site closure to the West Eunice Compressor Historical Release Site.

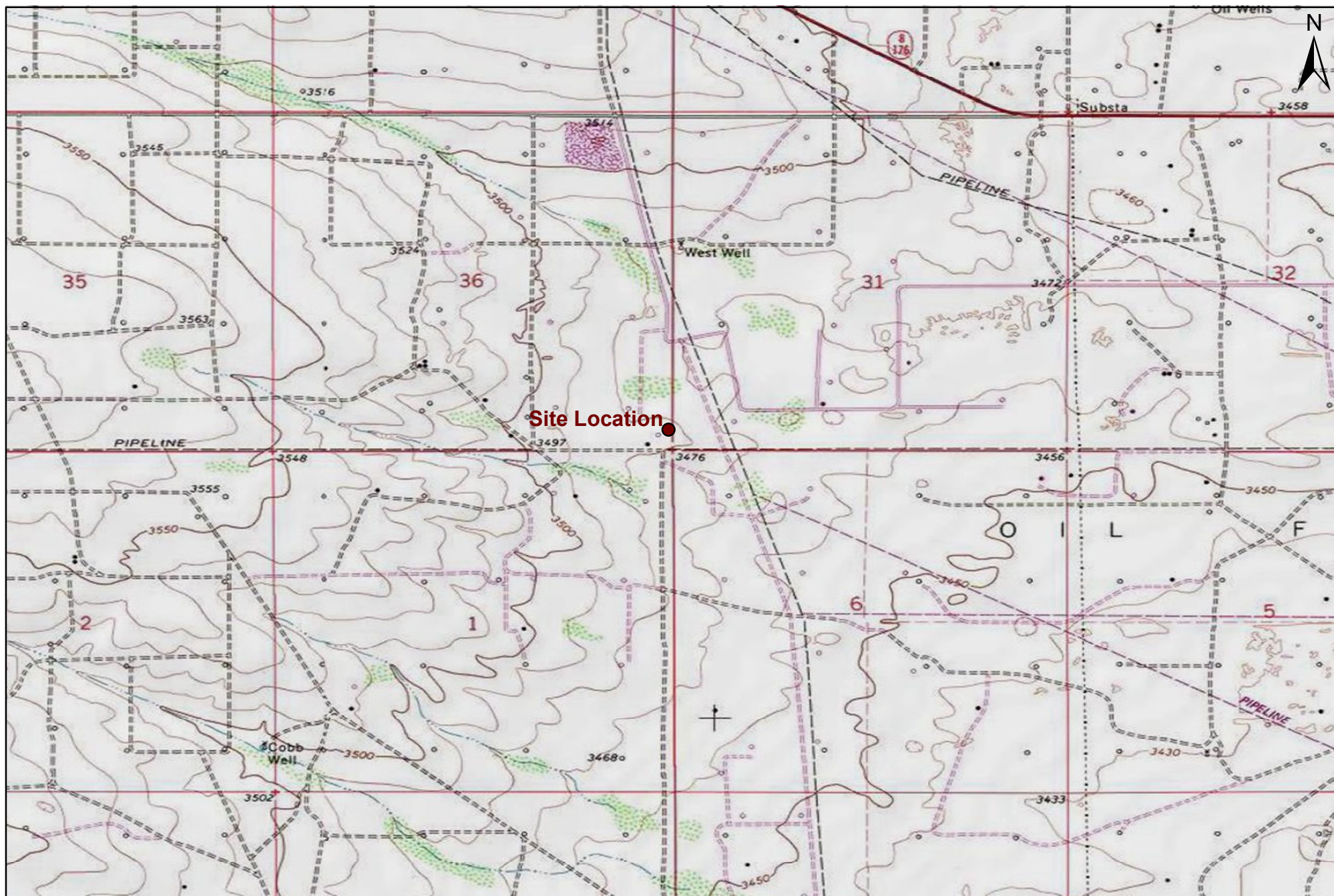
6.0 LIMITATIONS

Basin Environmental Service Technologies, LLC, has prepared this *Remediation Summary & Site Closure Request* to the best of its ability. No other warranty, expressed or implied, is made or intended. Basin has examined and relied upon documents referenced in the report and on oral statements made by certain individuals. Basin has not conducted an independent examination of the facts contained in referenced materials and statements. Basin has presumed the genuineness of these documents and statements and that the information provided therein is true and accurate. Basin has prepared this report in a professional manner, using the degree of skill and care exercised by similar environmental consultants. Basin notes that the facts and conditions referenced in this report may change over time, and the conclusions and recommendations set forth herein are applicable only to the facts and conditions as described at the time of this report.

This report has been prepared for the benefit of Southern Union Gas Services. The information contained in this report, including all exhibits and attachments, may not be used by any other party without the express consent of Basin Environmental Service Technologies, LLC, and/or Southern Union Gas Services.

7.0 DISTRIBUTION

- Copy 1: Geoffrey Leking
New Mexico Energy, Minerals and Natural Resources Department
Oil Conservation Division (District 1)
1625 French Drive
Hobbs, NM 88240
GeoffreyR.Leking@state.nm.us
- Copy 2: Rose Slade
Southern Union Gas Services
801 S. Loop 464
Monahans, Texas 79756
rose.slade@sug.com
- Copy 3: Basin Environmental Service Technologies, LLC
P.O. Box 301
Lovington, New Mexico 88260



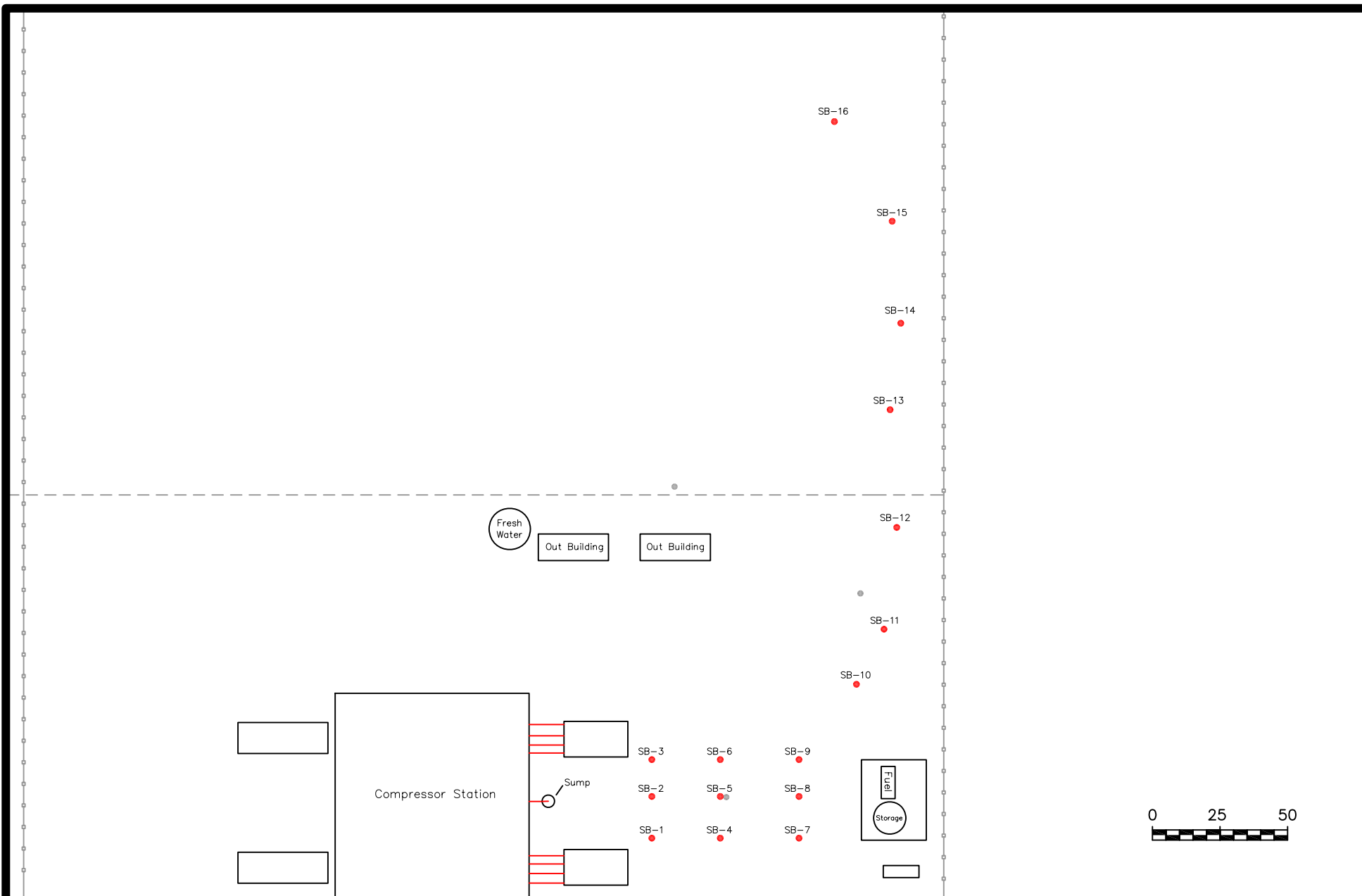
1,000 500 0 1,000 2,000
 Distance in Feet

Figure 1
Site Location Map
 Southern Union Gas Services
 West Eunice Compressor Sump
 Lea County, New Mexico
 NMOCD Reference #: 1RP-2724



Basin Environmental Service Technologies, LLC
 3100 Plains Hwy.
 Lovington, NM 88260

Drawn By: BJA	Checked By: JWL
February 13, 2013	Scale: 1" = 2000'



Legend

- Sample Location
- Fence
- Pipeline
- - - Caliche Pad

Figure 2
 Site and Sample Location Map
 Southern Union Gas Services
 West Eunice Compressor Station
 NMOCD Ref #1RP-2724
 Lea County, New Mexico

Basin Environmental Service Technologies

Prep By: JWL

Checked By: BJA

March 19, 2013

Scale 1"=50'

TABLE 1
CONCENTRATIONS OF BENZENE, BTEX, TPH & CHLORIDE IN SOIL

SOUTHERN UNION GAS SERVICES
WEST EUNICE COMPRESSOR STATION
HISTORICAL RELEASE SITE
LEA COUNTY, NEW MEXICO
NMOCD REF# 1RP-2724

SAMPLE LOCATION	SAMPLE DEPTH (BGS)	SAMPLE DATE	SOIL STATUS	BENZENE (mg/Kg)	TOLUENE (mg/Kg)	ETHYL- BENZENE (mg/Kg)	TOTAL XYLENES (mg/Kg)	TOTAL BTEX (mg/Kg)	GRO C ₆ -C ₁₂ (mg/Kg)	DRO C ₁₂ -C ₂₈ (mg/Kg)	ORO C ₂₈ -C ₃₅ (mg/Kg)	TOTAL TPH C ₆ -C ₂₈ (mg/Kg)	CHLORIDE (mg/Kg)
SB-1 @ 6"	6"	1/31/2013	In-Situ	-	-	-	-	-	<17.6	<17.6	<17.6	<17.6	1.97
SB-1 @ 4'	4'	1/31/2013	In-Situ	-	-	-	-	-	<18.0	18.2	25.8	44.0	1.22
SB-2 @ 6"	6"	1/31/2013	In-Situ	-	-	-	-	-	<19.6	<19.6	<19.6	<19.6	4.79
SB-2 @ 4'	4'	1/31/2013	In-Situ	-	-	-	-	-	<18.0	<18.0	<18.0	<18.0	16.4
SB-3 @ 6"	6"	1/31/2013	In-Situ	-	-	-	-	-	<16.1	51.2	47.1	98.3	3.27
SB-3 @ 4'	4'	1/31/2013	In-Situ	-	-	-	-	-	<15.6	<15.6	<15.6	<15.6	7.49
SB-4 @ 6"	6"	1/31/2013	In-Situ	-	-	-	-	-	<15.4	47.8	23.1	70.9	15.2
SB-4 @ 4'	4'	1/31/2013	In-Situ	-	-	-	-	-	<15.5	<15.5	<15.5	<15.5	6.58
SB-5 @ 6"	6"	1/31/2013	In-Situ	-	-	-	-	-	<15.9	51.0	38.1	89.1	1.56
SB-5 @ 4'	4'	1/31/2013	In-Situ	-	-	-	-	-	<16.2	<16.2	<16.2	<16.2	9.79
SB-6 @ 6"	6"	1/31/2013	In-Situ	-	-	-	-	-	<15.9	22.2	<15.9	22.2	3.11
SB-6 @ 4'	4'	1/31/2013	In-Situ	-	-	-	-	-	<15.7	<15.7	<15.7	<15.7	13.1
SB-7 @ 6"	6"	1/31/2013	In-Situ	-	-	-	-	-	<17.3	<17.3	<17.3	<17.3	37.0
SB-7 @ 4'	4'	1/31/2013	In-Situ	-	-	-	-	-	<15.8	<15.8	<15.8	<15.8	11.7
SB-8 @ 6"	6"	1/31/2013	In-Situ	-	-	-	-	-	<15.9	82.2	<15.9	82.2	1.83
SB-8 @ 4'	4'	1/31/2013	In-Situ	-	-	-	-	-	<15.8	<15.8	<15.8	<15.8	19.3
SB-9 @ 6"	6"	1/31/2013	In-Situ	-	-	-	-	-	<17.4	<17.4	<17.4	<17.4	8.89
SB-9 @ 4'	4'	1/31/2013	In-Situ	-	-	-	-	-	<16.3	<16.3	<16.3	<16.3	19.6
SB-10 @ 6"	6"	1/31/2013	In-Situ	-	-	-	-	-	<17.4	23.2	<17.4	23.2	2.20
SB-10 @ 4'	4'	1/31/2013	In-Situ	-	-	-	-	-	<17.0	<17.0	<17.0	<17.0	20.6
SB-11 @ 6"	6"	1/31/2013	In-Situ	-	-	-	-	-	<17.8	<17.8	<17.8	<17.8	<1.17
SB-11 @ 4'	4'	1/31/2013	In-Situ	-	-	-	-	-	<18.7	<18.7	<18.7	<18.7	7.95
SB-12 @ 6"	6"	1/31/2013	In-Situ	-	-	-	-	-	<18.1	<18.1	<18.1	<18.1	1.55
SB-12 @ 4'	4'	1/31/2013	In-Situ	-	-	-	-	-	<17.8	<17.8	<17.8	<17.8	7.54
SB-13 @ 6"	6"	1/31/2013	In-Situ	-	-	-	-	-	<18.5	31.8	<18.5	31.8	<1.23
SB-13 @ 4'	4'	1/31/2013	In-Situ	-	-	-	-	-	<20.1	<20.1	<20.1	<20.1	17.9
SB-14 @ 6"	6"	1/31/2013	In-Situ	-	-	-	-	-	<18.0	687	605	1,290	1.64
SB-14 @ 4'	4'	1/31/2013	In-Situ	-	-	-	-	-	<18.0	<18.0	<18.0	<18.0	30.3
SB-15 @ 6"	6"	1/31/2013	In-Situ	-	-	-	-	-	<18.2	<18.2	<18.2	<18.2	<1.22
SB-15 @ 4'	4'	1/31/2013	In-Situ	-	-	-	-	-	<18.5	<18.5	<18.5	<18.5	9.27
SB-16 @ 6"	6"	1/31/2013	In-Situ	-	-	-	-	-	<18.8	<18.8	<18.8	<18.8	<1.24
SB-16 @ 4'	4'	1/31/2013	In-Situ	-	-	-	-	-	<19.1	<19.1	<19.1	<19.1	2.44
SB-14 @ 2'	2'	1/31/2013	In-Situ	-	-	-	-	-	<17.0	<17.0	<17.0	<17.0	3.53
SB-14 @ 6'	6'	1/31/2013	In-Situ	-	-	-	-	-	<16.5	<16.5	<16.5	<16.5	55.5
SB-14a	6"	3/8/2013	In-Situ	<0.00101	<0.00201	<0.00101	<0.00201	<0.00201	-	-	-	-	-
NMOCD Standard				10				50				5,000	1,000



Photograph of soil sample collection at the West Eunice Compressor Station Historical Release Site.



Photograph of soil sample locations at the West Eunice Compressor Station Historical Release Site.



Photograph of soil sample locations at the West Eunice Compressor Station Historical Release Site.



Photograph of the disturbed area at the West Eunice Compressor Station Historical Release Site.

Analytical Report 456934
for
Southern Union Gas Services- Monahans

Project Manager: Joel Lowry

West Eunice Compressor

(1RP-2724)

13-FEB-13

Collected By: Client



12600 West I-20 East Odessa, Texas 79765

Xenco-Houston (EPA Lab code: TX00122):

Texas (T104704215-10-6-TX), Arizona (AZ0765), Arkansas (08-039-0), Connecticut (PH-0102), Florida (E871002)
Illinois (002082), Indiana (C-TX-02), Iowa (392), Kansas (E-10380), Kentucky (45), Louisiana (03054)
New Hampshire (297408), New Jersey (TX007), New York (11763), Oklahoma (9218), Pennsylvania (68-03610)
Rhode Island (LAO00312), USDA (S-44102), DoD (L11-54)

Xenco-Atlanta (EPA Lab Code: GA00046):

Florida (E87429), North Carolina (483), South Carolina (98015), Kentucky (85), DoD (L10-135)
Louisiana (04176), USDA (P330-07-00105)

Xenco-Tampa Mobile (EPA Lab code: FL01212): Florida (E84900)

Xenco-Lakeland: Florida (E84098)

Xenco-Odessa (EPA Lab code: TX00158): Texas (T104704400-TX)

Xenco-Dallas (EPA Lab code: TX01468): Texas (T104704295-TX)

Xenco Phoenix (EPA Lab Code: AZ00901): Arizona (AZ0757)

Xenco-Phoenix Mobile (EPA Lab code: AZ00901): Arizona (AZM757)

Xenco Tucson (EPA Lab code: AZ000989): Arizona (AZ0758)



13-FEB-13

Project Manager: **Joel Lowry**
Southern Union Gas Services- Monahans
801 South Loop 464
Monahans, TX 79756

Reference: XENCO Report No(s): **456934**
West Eunice Compressor
Project Address: Lea County, NM

Joel Lowry:

We are reporting to you the results of the analyses performed on the samples received under the project name referenced above and identified with the XENCO Report Number(s) 456934. All results being reported under this Report Number apply to the samples analyzed and properly identified with a Laboratory ID number. Subcontracted analyses are identified in this report with either the NELAC certification number of the subcontract lab in the analyst ID field, or the complete subcontracted report attached to this report.

Unless otherwise noted in a Case Narrative, all data reported in this Analytical Report are in compliance with NELAC standards. The uncertainty of measurement associated with the results of analysis reported is available upon request. Should insufficient sample be provided to the laboratory to meet the method and NELAC Matrix Duplicate and Matrix Spike requirements, then the data will be analyzed, evaluated and reported using all other available quality control measures.

The validity and integrity of this report will remain intact as long as it is accompanied by this letter and reproduced in full, unless written approval is granted by XENCO Laboratories. This report will be filed for at least 5 years in our archives after which time it will be destroyed without further notice, unless otherwise arranged with you. The samples received, and described as recorded in Report No. 456934 will be filed for 60 days, and after that time they will be properly disposed without further notice, unless otherwise arranged with you. We reserve the right to return to you any unused samples, extracts or solutions related to them if we consider so necessary (e.g., samples identified as hazardous waste, sample sizes exceeding analytical standard practices, controlled substances under regulated protocols, etc).

We thank you for selecting XENCO Laboratories to serve your analytical needs. If you have any questions concerning this report, please feel free to contact us at any time.

Respectfully,

Nicholas Straccione

Project Manager

Recipient of the Prestigious Small Business Administration Award of Excellence in 1994.

Certified and approved by numerous States and Agencies.

A Small Business and Minority Status Company that delivers SERVICE and QUALITY

Houston - Dallas - Odessa - San Antonio - Tampa - Lakeland - Atlanta - Phoenix - Oklahoma - Latin America

Southern Union Gas Services- Monahans, Monahans, TX

West Eunice Compressor

Sample Id	Matrix	Date Collected	Sample Depth	Lab Sample Id
SB-1 @ 6"	S	01-31-13 09:00		456934-001
SB-1 @ 4'	S	01-31-13 09:15		456934-002
SB-2 @ 6"	S	01-31-13 09:30		456934-003
SB-2 @ 4'	S	01-31-13 09:45		456934-004
SB-3 @ 6"	S	01-31-13 10:00		456934-005
SB-3 @ 4'	S	01-31-13 10:15		456934-006
SB-4 @ 6"	S	01-31-13 10:30		456934-007
SB-4 @ 4'	S	01-31-13 10:45		456934-008
SB-5 @ 6"	S	01-31-13 11:00		456934-009
SB-5 @ 4'	S	01-31-13 11:15		456934-010
SB-6 @ 6"	S	01-31-13 11:30		456934-011
SB-6 @ 4'	S	01-31-13 11:45		456934-012
SB-7 @ 6'	S	01-31-13 12:00		456934-013
SB-7 @ 4'	S	01-31-13 12:15		456934-014
SB-8 @ 6"	S	01-31-13 12:30		456934-015
SB-8 @ 4'	S	01-31-13 12:45		456934-016
SB-9 @ 6"	S	01-31-13 13:00		456934-017
SB-9 @ 4'	S	01-31-13 13:15		456934-018
SB-10 @ 6'	S	01-31-13 13:30		456934-019
SB-10 @ 4'	S	01-31-13 13:45		456934-020
SB-11 @ 6"	S	01-31-13 14:00		456934-021
SB-11 @ 4'	S	01-31-13 14:15		456934-022
SB-12 @ 6"	S	01-31-13 14:30		456934-023
SB-12 @ 4'	S	01-31-13 14:45		456934-024
SB-13 @ 6"	S	01-31-13 15:00		456934-025
SB-13 @ 4'	S	01-31-13 15:15		456934-026
SB-14 @ 6"	S	01-31-13 15:30		456934-027
SB-14 @ 4'	S	01-31-13 15:45		456934-028
SB-15 @ 6"	S	01-31-13 16:00		456934-029
SB-15 @ 4'	S	01-31-13 16:15		456934-030
SB-16 @ 6"	S	01-31-13 16:30		456934-031
SB-16 @ 4'	S	01-31-13 16:45		456934-032



CASE NARRATIVE

Client Name: Southern Union Gas Services- Monahans

Project Name: West Eunice Compressor



Project ID: (IRP-2724)
Work Order Number(s): 456934

Report Date: 13-FEB-13
Date Received: 02/04/2013

Sample receipt non conformances and comments:

None

Sample receipt non conformances and comments per sample:

None

Certificate of Analysis Summary 456934

Southern Union Gas Services- Monahans, Monahans, TX



Project Id: (IRP-2724)

Contact: Joel Lowry

Project Location: Lea County,NM

Project Name: West Eunice Compressor

Date Received in Lab: Mon Feb-04-13 10:46 am

Report Date: 13-FEB-13

Project Manager: Nicholas Straccione

<i>Analysis Requested</i>	<i>Lab Id:</i>	456934-001	456934-002	456934-003	456934-004	456934-005	456934-006
	<i>Field Id:</i>	SB-1 @6"	SB-1 @ 4'	SB-2 @ 6"	SB-2 @ 4'	SB-3 @ 6"	SB-3 @ 4'
	<i>Depth:</i>						
	<i>Matrix:</i>	SOIL	SOIL	SOIL	SOIL	SOIL	SOIL
	<i>Sampled:</i>	Jan-31-13 09:00	Jan-31-13 09:15	Jan-31-13 09:30	Jan-31-13 09:45	Jan-31-13 10:00	Jan-31-13 10:15
Inorganic Anions by EPA 300/300.1 SUB: E871002	<i>Extracted:</i>	Feb-07-13 03:08	Feb-12-13 10:41	Feb-07-13 04:00	Feb-12-13 10:58	Feb-07-13 04:18	Feb-12-13 11:16
	<i>Analyzed:</i>	Feb-07-13 03:08	Feb-12-13 10:41	Feb-07-13 04:00	Feb-12-13 10:58	Feb-07-13 04:18	Feb-12-13 11:16
	<i>Units/RL:</i>	mg/kg RL	mg/kg RL	mg/kg RL	mg/kg RL	mg/kg RL	mg/kg RL
Chloride		1.97 1.17	1.22 1.19	4.79 1.31	16.4 1.16	3.27 1.07	7.49 1.04
Percent Moisture	<i>Extracted:</i>						
	<i>Analyzed:</i>	Feb-05-13 12:45	Feb-05-13 12:45	Feb-05-13 12:45	Feb-05-13 12:45	Feb-05-13 12:45	Feb-05-13 12:45
	<i>Units/RL:</i>	% RL	% RL	% RL	% RL	% RL	% RL
Percent Moisture		14.9 1.00	16.8 1.00	23.6 1.00	16.8 1.00	7.43 1.00	3.84 1.00
TPH By SW8015 Mod	<i>Extracted:</i>	Feb-05-13 13:00	Feb-11-13 09:45	Feb-05-13 13:00	Feb-11-13 09:45	Feb-05-13 13:00	Feb-11-13 09:45
	<i>Analyzed:</i>	Feb-05-13 14:45	Feb-11-13 15:49	Feb-05-13 15:12	Feb-11-13 16:20	Feb-05-13 15:44	Feb-11-13 16:55
	<i>Units/RL:</i>	mg/kg RL	mg/kg RL	mg/kg RL	mg/kg RL	mg/kg RL	mg/kg RL
C6-C12 Gasoline Range Hydrocarbons		ND 17.6	ND 18.0	ND 19.6	ND 18.0	ND 16.1	ND 15.6
C12-C28 Diesel Range Hydrocarbons		ND 17.6	18.2 18.0	ND 19.6	ND 18.0	51.2 16.1	ND 15.6
C28-C35 Oil Range Hydrocarbons		ND 17.6	25.8 18.0	ND 19.6	ND 18.0	47.1 16.1	ND 15.6
Total TPH		ND 17.6	44.0 18.0	ND 19.6	ND 18.0	98.3 16.1	ND 15.6

This analytical report, and the entire data package it represents, has been made for your exclusive and confidential use.
The interpretations and results expressed throughout this analytical report represent the best judgment of XENCO Laboratories.
XENCO Laboratories assumes no responsibility and makes no warranty to the end use of the data hereby presented.
Our liability is limited to the amount invoiced for this work order unless otherwise agreed to in writing.

Houston - Dallas - San Antonio - Atlanta - Tampa - Boca Raton - Latin America - Odessa - Corpus Christi



Nicholas Straccione
Project Manager

Certificate of Analysis Summary 456934

Southern Union Gas Services- Monahans, Monahans, TX



Project Name: West Eunice Compressor

Project Id: (IRP-2724)

Contact: Joel Lowry

Project Location: Lea County,NM

Date Received in Lab: Mon Feb-04-13 10:46 am

Report Date: 13-FEB-13

Project Manager: Nicholas Straccione

<i>Analysis Requested</i>	<i>Lab Id:</i>	456934-007	456934-008	456934-009	456934-010	456934-011	456934-012
	<i>Field Id:</i>	SB-4 @6"	SB-4 @ 4'	SB-5 @ 6"	SB-5 @ 4'	SB-6 @ 6"	SB-6 @ 4'
	<i>Depth:</i>						
	<i>Matrix:</i>	SOIL	SOIL	SOIL	SOIL	SOIL	SOIL
	<i>Sampled:</i>	Jan-31-13 10:30	Jan-31-13 10:45	Jan-31-13 11:00	Jan-31-13 11:15	Jan-31-13 11:30	Jan-31-13 11:45
Inorganic Anions by EPA 300/300.1 SUB: E871002	<i>Extracted:</i>	Feb-07-13 05:10	Feb-12-13 11:33	Feb-07-13 05:27	Feb-12-13 11:50	Feb-07-13 05:45	Feb-12-13 12:08
	<i>Analyzed:</i>	Feb-07-13 05:10	Feb-12-13 11:33	Feb-07-13 05:27	Feb-12-13 11:50	Feb-07-13 05:45	Feb-12-13 12:08
	<i>Units/RL:</i>	mg/kg RL	mg/kg RL	mg/kg RL	mg/kg RL	mg/kg RL	mg/kg RL
Chloride		15.2 1.03	6.58 1.04	1.56 1.06	9.79 1.08	3.11 1.06	13.1 1.05
Percent Moisture	<i>Extracted:</i>						
	<i>Analyzed:</i>	Feb-05-13 12:45	Feb-05-13 12:45	Feb-05-13 12:45	Feb-05-13 12:45	Feb-05-13 12:45	Feb-05-13 12:45
	<i>Units/RL:</i>	% RL	% RL	% RL	% RL	% RL	% RL
Percent Moisture		3.32 1.00	3.72 1.00	6.02 1.00	7.53 1.00	5.42 1.00	4.69 1.00
TPH By SW8015 Mod	<i>Extracted:</i>	Feb-05-13 13:00	Feb-11-13 09:45	Feb-05-13 13:00	Feb-11-13 09:45	Feb-05-13 13:00	Feb-11-13 09:45
	<i>Analyzed:</i>	Feb-05-13 16:11	Feb-11-13 17:27	Feb-05-13 16:38	Feb-11-13 18:04	Feb-05-13 17:08	Feb-11-13 18:39
	<i>Units/RL:</i>	mg/kg RL	mg/kg RL	mg/kg RL	mg/kg RL	mg/kg RL	mg/kg RL
C6-C12 Gasoline Range Hydrocarbons		ND 15.4	ND 15.5	ND 15.9	ND 16.2	ND 15.9	ND 15.7
C12-C28 Diesel Range Hydrocarbons		47.8 15.4	ND 15.5	51.0 15.9	ND 16.2	22.2 15.9	ND 15.7
C28-C35 Oil Range Hydrocarbons		23.1 15.4	ND 15.5	38.1 15.9	ND 16.2	ND 15.9	ND 15.7
Total TPH		70.9 15.4	ND 15.5	89.1 15.9	ND 16.2	22.2 15.9	ND 15.7

This analytical report, and the entire data package it represents, has been made for your exclusive and confidential use.
The interpretations and results expressed throughout this analytical report represent the best judgment of XENCO Laboratories.
XENCO Laboratories assumes no responsibility and makes no warranty to the end use of the data hereby presented.
Our liability is limited to the amount invoiced for this work order unless otherwise agreed to in writing.

Houston - Dallas - San Antonio - Atlanta - Tampa - Boca Raton - Latin America - Odessa - Corpus Christi



Nicholas Straccione
Project Manager

Certificate of Analysis Summary 456934

Southern Union Gas Services- Monahans, Monahans, TX



Project Id: (IRP-2724)

Contact: Joel Lowry

Project Location: Lea County,NM

Project Name: West Eunice Compressor

Date Received in Lab: Mon Feb-04-13 10:46 am

Report Date: 13-FEB-13

Project Manager: Nicholas Straccione

<i>Analysis Requested</i>	<i>Lab Id:</i>	456934-013	456934-014	456934-015	456934-016	456934-017	456934-018
	<i>Field Id:</i>	SB-7 @ 6'	SB-7 @ 4'	SB-8 @ 6"	SB-8 @ 4'	SB-9 @ 6"	SB-9 @ 4'
	<i>Depth:</i>						
	<i>Matrix:</i>	SOIL	SOIL	SOIL	SOIL	SOIL	SOIL
	<i>Sampled:</i>	Jan-31-13 12:00	Jan-31-13 12:15	Jan-31-13 12:30	Jan-31-13 12:45	Jan-31-13 13:00	Jan-31-13 13:15
Inorganic Anions by EPA 300/300.1 SUB: E871002	<i>Extracted:</i>	Feb-07-13 06:02	Feb-12-13 12:25	Feb-07-13 06:20	Feb-12-13 12:43	Feb-07-13 06:37	Feb-12-13 15:37
	<i>Analyzed:</i>	Feb-07-13 06:02	Feb-12-13 12:25	Feb-07-13 06:20	Feb-12-13 12:43	Feb-07-13 06:37	Feb-12-13 15:37
	<i>Units/RL:</i>	mg/kg RL	mg/kg RL	mg/kg RL	mg/kg RL	mg/kg RL	mg/kg RL
Chloride		37.0 1.15	11.7 1.05	1.83 1.06	19.3 1.06	8.89 1.16	19.6 1.09
Percent Moisture	<i>Extracted:</i>						
	<i>Analyzed:</i>	Feb-05-13 12:45	Feb-05-13 12:45	Feb-05-13 12:45	Feb-05-13 12:45	Feb-05-13 12:45	Feb-05-13 12:45
	<i>Units/RL:</i>	% RL	% RL	% RL	% RL	% RL	% RL
Percent Moisture		13.3 1.00	4.93 1.00	6.11 1.00	5.42 1.00	14.3 1.00	7.84 1.00
TPH By SW8015 Mod	<i>Extracted:</i>	Feb-05-13 13:00	Feb-11-13 09:45	Feb-05-13 13:00	Feb-11-13 09:45	Feb-05-13 13:00	Feb-11-13 09:45
	<i>Analyzed:</i>	Feb-05-13 17:35	Feb-11-13 19:51	Feb-06-13 08:11	Feb-11-13 20:25	Feb-05-13 18:36	Feb-11-13 21:02
	<i>Units/RL:</i>	mg/kg RL	mg/kg RL	mg/kg RL	mg/kg RL	mg/kg RL	mg/kg RL
C6-C12 Gasoline Range Hydrocarbons		ND 17.3	ND 15.8	ND 15.9	ND 15.8	ND 17.4	ND 16.3
C12-C28 Diesel Range Hydrocarbons		ND 17.3	ND 15.8	82.2 15.9	ND 15.8	ND 17.4	ND 16.3
C28-C35 Oil Range Hydrocarbons		ND 17.3	ND 15.8	ND 15.9	ND 15.8	ND 17.4	ND 16.3
Total TPH		ND 17.3	ND 15.8	82.2 15.9	ND 15.8	ND 17.4	ND 16.3

This analytical report, and the entire data package it represents, has been made for your exclusive and confidential use.
The interpretations and results expressed throughout this analytical report represent the best judgment of XENCO Laboratories.
XENCO Laboratories assumes no responsibility and makes no warranty to the end use of the data hereby presented.
Our liability is limited to the amount invoiced for this work order unless otherwise agreed to in writing.

Houston - Dallas - San Antonio - Atlanta - Tampa - Boca Raton - Latin America - Odessa - Corpus Christi



Nicholas Straccione
Project Manager

Certificate of Analysis Summary 456934

Southern Union Gas Services- Monahans, Monahans, TX



Project Id: (IRP-2724)

Contact: Joel Lowry

Project Location: Lea County,NM

Project Name: West Eunice Compressor

Date Received in Lab: Mon Feb-04-13 10:46 am

Report Date: 13-FEB-13

Project Manager: Nicholas Straccione

<i>Analysis Requested</i>	<i>Lab Id:</i>	456934-019	456934-020	456934-021	456934-022	456934-023	456934-024
	<i>Field Id:</i>	SB-10 @ 6'	SB-10 @ 4'	SB-11 @ 6"	SB-11 @ 4'	SB-12 @ 6"	SB-12 @ 4'
	<i>Depth:</i>						
	<i>Matrix:</i>	SOIL	SOIL	SOIL	SOIL	SOIL	SOIL
	<i>Sampled:</i>	Jan-31-13 13:30	Jan-31-13 13:45	Jan-31-13 14:00	Jan-31-13 14:15	Jan-31-13 14:30	Jan-31-13 14:45
Inorganic Anions by EPA 300/300.1 SUB: E871002	<i>Extracted:</i>	Feb-07-13 07:29	Feb-12-13 15:54	Feb-07-13 07:47	Feb-12-13 16:12	Feb-07-13 08:04	Feb-12-13 16:29
	<i>Analyzed:</i>	Feb-07-13 07:29	Feb-12-13 15:54	Feb-07-13 07:47	Feb-12-13 16:12	Feb-07-13 08:04	Feb-12-13 16:29
	<i>Units/RL:</i>	mg/kg RL	mg/kg RL	mg/kg RL	mg/kg RL	mg/kg RL	mg/kg RL
Chloride		2.20 1.15	20.6 1.14	ND 1.17	7.95 1.23	1.55 1.20	7.54 1.18
Percent Moisture	<i>Extracted:</i>						
	<i>Analyzed:</i>	Feb-05-13 12:45	Feb-05-13 12:45	Feb-05-13 12:45	Feb-05-13 12:45	Feb-05-13 12:45	Feb-05-13 12:45
	<i>Units/RL:</i>	% RL	% RL	% RL	% RL	% RL	% RL
Percent Moisture		14.2 1.00	12.1 1.00	15.7 1.00	19.7 1.00	17.0 1.00	15.6 1.00
TPH By SW8015 Mod	<i>Extracted:</i>	Feb-05-13 13:00	Feb-11-13 09:45	Feb-05-13 13:00	Feb-11-13 09:45	Feb-05-13 13:00	Feb-11-13 09:45
	<i>Analyzed:</i>	Feb-05-13 19:03	Feb-11-13 21:36	Feb-06-13 08:36	Feb-11-13 22:10	Feb-05-13 20:42	Feb-11-13 22:44
	<i>Units/RL:</i>	mg/kg RL	mg/kg RL	mg/kg RL	mg/kg RL	mg/kg RL	mg/kg RL
C6-C12 Gasoline Range Hydrocarbons		ND 17.4	ND 17.0	ND 17.8	ND 18.7	ND 18.1	ND 17.8
C12-C28 Diesel Range Hydrocarbons		23.2 17.4	ND 17.0	ND 17.8	ND 18.7	ND 18.1	ND 17.8
C28-C35 Oil Range Hydrocarbons		ND 17.4	ND 17.0	ND 17.8	ND 18.7	ND 18.1	ND 17.8
Total TPH		23.2 17.4	ND 17.0	ND 17.8	ND 18.7	ND 18.1	ND 17.8

This analytical report, and the entire data package it represents, has been made for your exclusive and confidential use.
The interpretations and results expressed throughout this analytical report represent the best judgment of XENCO Laboratories.
XENCO Laboratories assumes no responsibility and makes no warranty to the end use of the data hereby presented.
Our liability is limited to the amount invoiced for this work order unless otherwise agreed to in writing.

Houston - Dallas - San Antonio - Atlanta - Tampa - Boca Raton - Latin America - Odessa - Corpus Christi



Nicholas Straccione
Project Manager

Certificate of Analysis Summary 456934

Southern Union Gas Services- Monahans, Monahans, TX



Project Name: West Eunice Compressor

Project Id: (IRP-2724)

Contact: Joel Lowry

Project Location: Lea County,NM

Date Received in Lab: Mon Feb-04-13 10:46 am

Report Date: 13-FEB-13

Project Manager: Nicholas Straccione

<i>Analysis Requested</i>	<i>Lab Id:</i>	456934-025	456934-026	456934-027	456934-028	456934-029	456934-030
	<i>Field Id:</i>	SB-13 @ 6"	SB-13 @ 4'	SB-14 @ 6"	SB-14 @ 4'	SB-15 @ 6"	SB-15 @ 4'
	<i>Depth:</i>						
	<i>Matrix:</i>	SOIL	SOIL	SOIL	SOIL	SOIL	SOIL
	<i>Sampled:</i>	Jan-31-13 15:00	Jan-31-13 15:15	Jan-31-13 15:30	Jan-31-13 15:45	Jan-31-13 16:00	Jan-31-13 16:15
Inorganic Anions by EPA 300/300.1 SUB: E871002	<i>Extracted:</i>	Feb-07-13 08:21	Feb-12-13 16:46	Feb-07-13 08:39	Feb-12-13 17:04	Feb-07-13 08:56	Feb-12-13 17:21
	<i>Analyzed:</i>	Feb-07-13 08:21	Feb-12-13 16:46	Feb-07-13 08:39	Feb-12-13 17:04	Feb-07-13 08:56	Feb-12-13 17:21
	<i>Units/RL:</i>	mg/kg RL	mg/kg RL	mg/kg RL	mg/kg RL	mg/kg RL	mg/kg RL
Chloride		ND 1.23	17.9 1.34	1.64 1.20	30.3 1.20	ND 1.22	9.27 1.24
Percent Moisture	<i>Extracted:</i>						
	<i>Analyzed:</i>	Feb-05-13 12:45	Feb-05-13 12:45	Feb-05-13 12:45	Feb-05-13 12:45	Feb-05-13 12:45	Feb-05-13 16:40
	<i>Units/RL:</i>	% RL	% RL	% RL	% RL	% RL	% RL
Percent Moisture		18.8 1.00	25.4 1.00	17.0 1.00	16.7 1.00	17.8 1.00	19.5 1.00
TPH By SW8015 Mod	<i>Extracted:</i>	Feb-05-13 13:00	Feb-11-13 09:45	Feb-05-13 13:00	Feb-11-13 09:45	Feb-05-13 13:00	Feb-11-13 09:45
	<i>Analyzed:</i>	Feb-05-13 21:16	Feb-11-13 23:18	Feb-06-13 09:03	Feb-11-13 23:51	Feb-05-13 22:23	Feb-12-13 00:25
	<i>Units/RL:</i>	mg/kg RL	mg/kg RL	mg/kg RL	mg/kg RL	mg/kg RL	mg/kg RL
C6-C12 Gasoline Range Hydrocarbons		ND 18.5	ND 20.1	ND 18.0	ND 18.0	ND 18.2	ND 18.5
C12-C28 Diesel Range Hydrocarbons		31.8 18.5	ND 20.1	687 18.0	ND 18.0	ND 18.2	ND 18.5
C28-C35 Oil Range Hydrocarbons		ND 18.5	ND 20.1	605 18.0	ND 18.0	ND 18.2	ND 18.5
Total TPH		31.8 18.5	ND 20.1	1290 18.0	ND 18.0	ND 18.2	ND 18.5

This analytical report, and the entire data package it represents, has been made for your exclusive and confidential use.
The interpretations and results expressed throughout this analytical report represent the best judgment of XENCO Laboratories.
XENCO Laboratories assumes no responsibility and makes no warranty to the end use of the data hereby presented.
Our liability is limited to the amount invoiced for this work order unless otherwise agreed to in writing.

Houston - Dallas - San Antonio - Atlanta - Tampa - Boca Raton - Latin America - Odessa - Corpus Christi



Nicholas Straccione
Project Manager

Certificate of Analysis Summary 456934

Southern Union Gas Services- Monahans, Monahans, TX



Project Id: (IRP-2724)

Contact: Joel Lowry

Project Location: Lea County,NM

Project Name: West Eunice Compressor

Date Received in Lab: Mon Feb-04-13 10:46 am

Report Date: 13-FEB-13

Project Manager: Nicholas Straccione

Analysis Requested	Lab Id:	456934-031	456934-032				
	Field Id:	SB-16 @ 6"	SB-16 @ 4'				
	Depth:						
	Matrix:	SOIL	SOIL				
	Sampled:	Jan-31-13 16:30	Jan-31-13 16:45				
Inorganic Anions by EPA 300/300.1 SUB: E871002	Extracted:	Feb-07-13 09:14	Feb-12-13 18:13				
	Analyzed:	Feb-07-13 09:14	Feb-12-13 18:13				
	Units/RL:	mg/kg RL	mg/kg RL				
Chloride		ND 1.24	2.44 1.27				
Percent Moisture	Extracted:						
	Analyzed:	Feb-05-13 16:40	Feb-05-13 16:40				
	Units/RL:	% RL	% RL				
Percent Moisture		20.6 1.00	21.5 1.00				
TPH By SW8015 Mod	Extracted:	Feb-05-13 13:00	Feb-11-13 09:45				
	Analyzed:	Feb-05-13 22:56	Feb-12-13 00:59				
	Units/RL:	mg/kg RL	mg/kg RL				
C6-C12 Gasoline Range Hydrocarbons		ND 18.8	ND 19.1				
C12-C28 Diesel Range Hydrocarbons		ND 18.8	ND 19.1				
C28-C35 Oil Range Hydrocarbons		ND 18.8	ND 19.1				
Total TPH		ND 18.8	ND 19.1				

This analytical report, and the entire data package it represents, has been made for your exclusive and confidential use. The interpretations and results expressed throughout this analytical report represent the best judgment of XENCO Laboratories. XENCO Laboratories assumes no responsibility and makes no warranty to the end use of the data hereby presented. Our liability is limited to the amount invoiced for this work order unless otherwise agreed to in writing.

Houston - Dallas - San Antonio - Atlanta - Tampa - Boca Raton - Latin America - Odessa - Corpus Christi



Nicholas Straccione
Project Manager

Flagging Criteria

- X** In our quality control review of the data a QC deficiency was observed and flagged as noted. MS/MSD recoveries were found to be outside of the laboratory control limits due to possible matrix /chemical interference, or a concentration of target analyte high enough to affect the recovery of the spike concentration. This condition could also affect the relative percent difference in the MS/MSD.
- B** A target analyte or common laboratory contaminant was identified in the method blank. Its presence indicates possible field or laboratory contamination.
- D** The sample(s) were diluted due to targets detected over the highest point of the calibration curve, or due to matrix interference. Dilution factors are included in the final results. The result is from a diluted sample.
- E** The data exceeds the upper calibration limit; therefore, the concentration is reported as estimated.
- F** RPD exceeded lab control limits.
- J** The target analyte was positively identified below the quantitation limit and above the detection limit.
- U** Analyte was not detected.
- L** The LCS data for this analytical batch was reported below the laboratory control limits for this analyte. The department supervisor and QA Director reviewed data. The samples were either reanalyzed or flagged as estimated concentrations.
- H** The LCS data for this analytical batch was reported above the laboratory control limits. Supporting QC Data were reviewed by the Department Supervisor and QA Director. Data were determined to be valid for reporting.
- K** Sample analyzed outside of recommended hold time.
- JN** A combination of the "N" and the "J" qualifier. The analysis indicates that the analyte is "tentatively identified" and the associated numerical value may not be consistent with the amount actually present in the environmental sample.

* Surrogate recovered outside laboratory control limit.

BRL Below Reporting Limit.

RL Reporting Limit

MDL Method Detection Limit **SDL** Sample Detection Limit **LOD** Limit of Detection

PQL Practical Quantitation Limit **SQL** Method Quantitation Limit **LOQ** Limit of Quantitation

DL Method Detection Limit

NC Non-Calculable

+ NELAC certification not offered for this compound.

* (Next to analyte name or method description) = Outside XENCO's scope of NELAC accreditation

Recipient of the Prestigious Small Business Administration Award of Excellence in 1994.

Certified and approved by numerous States and Agencies.

A Small Business and Minority Status Company that delivers SERVICE and QUALITY

Houston - Dallas - San Antonio - Atlanta - Midland/Odessa - Tampa/Lakeland - Phoenix - Latin America

4143 Greenbriar Dr, Stafford, TX 77477
 9701 Harry Hines Blvd, Dallas, TX 75220
 5332 Blackberry Drive, San Antonio TX 78238
 2505 North Falkenburg Rd, Tampa, FL 33619
 12600 West I-20 East, Odessa, TX 79765
 6017 Financial Drive, Norcross, GA 30071
 3725 E. Atlanta Ave, Phoenix, AZ 85040

Phone	Fax
(281) 240-4200	(281) 240-4280
(214) 902 0300	(214) 351-9139
(210) 509-3334	(210) 509-3335
(813) 620-2000	(813) 620-2033
(432) 563-1800	(432) 563-1713
(770) 449-8800	(770) 449-5477
(602) 437-0330	

Form 2 - Surrogate Recoveries

Project Name: West Eunice Compressor

Work Orders : 456934,

Project ID: (1RP-2724)

Lab Batch #: 906325

Sample: 456934-001 / SMP

Batch: 1 Matrix: Soil

Units: mg/kg Date Analyzed: 02/05/13 14:45		SURROGATE RECOVERY STUDY			
TPH By SW8015 Mod		Amount Found [A]	True Amount [B]	Recovery %R [D]	Control Limits %R
Analytes					
1-Chlorooctane		107	99.7	107	70-135
o-Terphenyl		57.8	49.9	116	70-135

Lab Batch #: 906325

Sample: 456934-003 / SMP

Batch: 1 Matrix: Soil

Units: mg/kg Date Analyzed: 02/05/13 15:12		SURROGATE RECOVERY STUDY			
TPH By SW8015 Mod		Amount Found [A]	True Amount [B]	Recovery %R [D]	Control Limits %R
Analytes					
1-Chlorooctane		106	99.8	106	70-135
o-Terphenyl		57.2	49.9	115	70-135

Lab Batch #: 906325

Sample: 456934-005 / SMP

Batch: 1 Matrix: Soil

Units: mg/kg Date Analyzed: 02/05/13 15:44		SURROGATE RECOVERY STUDY			
TPH By SW8015 Mod		Amount Found [A]	True Amount [B]	Recovery %R [D]	Control Limits %R
Analytes					
1-Chlorooctane		105	99.5	106	70-135
o-Terphenyl		55.9	49.8	112	70-135

Lab Batch #: 906325

Sample: 456934-007 / SMP

Batch: 1 Matrix: Soil

Units: mg/kg Date Analyzed: 02/05/13 16:11		SURROGATE RECOVERY STUDY			
TPH By SW8015 Mod		Amount Found [A]	True Amount [B]	Recovery %R [D]	Control Limits %R
Analytes					
1-Chlorooctane		107	99.5	108	70-135
o-Terphenyl		55.7	49.8	112	70-135

Lab Batch #: 906325

Sample: 456934-009 / SMP

Batch: 1 Matrix: Soil

Units: mg/kg Date Analyzed: 02/05/13 16:38		SURROGATE RECOVERY STUDY			
TPH By SW8015 Mod		Amount Found [A]	True Amount [B]	Recovery %R [D]	Control Limits %R
Analytes					
1-Chlorooctane		108	99.8	108	70-135
o-Terphenyl		57.3	49.9	115	70-135

* Surrogate outside of Laboratory QC limits

** Surrogates outside limits; data and surrogates confirmed by reanalysis

*** Poor recoveries due to dilution

Surrogate Recovery [D] = $100 * A / B$

All results are based on MDL and validated for QC purposes.

Form 2 - Surrogate Recoveries

Project Name: West Eunice Compressor

Work Orders : 456934,

Project ID: (1RP-2724)

Lab Batch #: 906325

Sample: 456934-011 / SMP

Batch: 1 Matrix: Soil

Units: mg/kg Date Analyzed: 02/05/13 17:08		SURROGATE RECOVERY STUDY			
TPH By SW8015 Mod		Amount Found [A]	True Amount [B]	Recovery %R [D]	Control Limits %R
Analytes					
1-Chlorooctane		106	100	106	70-135
o-Terphenyl		56.1	50.0	112	70-135

Lab Batch #: 906325

Sample: 456934-013 / SMP

Batch: 1 Matrix: Soil

Units: mg/kg Date Analyzed: 02/05/13 17:35		SURROGATE RECOVERY STUDY			
TPH By SW8015 Mod		Amount Found [A]	True Amount [B]	Recovery %R [D]	Control Limits %R
Analytes					
1-Chlorooctane		111	100	111	70-135
o-Terphenyl		59.7	50.0	119	70-135

Lab Batch #: 906325

Sample: 456934-017 / SMP

Batch: 1 Matrix: Soil

Units: mg/kg Date Analyzed: 02/05/13 18:36		SURROGATE RECOVERY STUDY			
TPH By SW8015 Mod		Amount Found [A]	True Amount [B]	Recovery %R [D]	Control Limits %R
Analytes					
1-Chlorooctane		109	99.5	110	70-135
o-Terphenyl		58.5	49.8	117	70-135

Lab Batch #: 906325

Sample: 456934-019 / SMP

Batch: 1 Matrix: Soil

Units: mg/kg Date Analyzed: 02/05/13 19:03		SURROGATE RECOVERY STUDY			
TPH By SW8015 Mod		Amount Found [A]	True Amount [B]	Recovery %R [D]	Control Limits %R
Analytes					
1-Chlorooctane		106	99.5	107	70-135
o-Terphenyl		56.4	49.8	113	70-135

Lab Batch #: 906325

Sample: 456934-023 / SMP

Batch: 1 Matrix: Soil

Units: mg/kg Date Analyzed: 02/05/13 20:42		SURROGATE RECOVERY STUDY			
TPH By SW8015 Mod		Amount Found [A]	True Amount [B]	Recovery %R [D]	Control Limits %R
Analytes					
1-Chlorooctane		105	100	105	70-135
o-Terphenyl		55.9	50.1	112	70-135

* Surrogate outside of Laboratory QC limits

** Surrogates outside limits; data and surrogates confirmed by reanalysis

*** Poor recoveries due to dilution

Surrogate Recovery [D] = $100 * A / B$

All results are based on MDL and validated for QC purposes.

Form 2 - Surrogate Recoveries

Project Name: West Eunice Compressor

Work Orders : 456934,

Project ID: (1RP-2724)

Lab Batch #: 906325

Sample: 456934-025 / SMP

Batch: 1 Matrix: Soil

Units: mg/kg Date Analyzed: 02/05/13 21:16		SURROGATE RECOVERY STUDY			
TPH By SW8015 Mod		Amount Found [A]	True Amount [B]	Recovery %R [D]	Control Limits %R
Analytes					
1-Chlorooctane		102	99.9	102	70-135
o-Terphenyl		55.0	50.0	110	70-135

Lab Batch #: 906325

Sample: 456934-029 / SMP

Batch: 1 Matrix: Soil

Units: mg/kg Date Analyzed: 02/05/13 22:23		SURROGATE RECOVERY STUDY			
TPH By SW8015 Mod		Amount Found [A]	True Amount [B]	Recovery %R [D]	Control Limits %R
Analytes					
1-Chlorooctane		110	99.7	110	70-135
o-Terphenyl		58.5	49.9	117	70-135

Lab Batch #: 906325

Sample: 456934-031 / SMP

Batch: 1 Matrix: Soil

Units: mg/kg Date Analyzed: 02/05/13 22:56		SURROGATE RECOVERY STUDY			
TPH By SW8015 Mod		Amount Found [A]	True Amount [B]	Recovery %R [D]	Control Limits %R
Analytes					
1-Chlorooctane		108	99.7	108	70-135
o-Terphenyl		57.7	49.9	116	70-135

Lab Batch #: 906325

Sample: 456934-015 / SMP

Batch: 1 Matrix: Soil

Units: mg/kg Date Analyzed: 02/06/13 08:11		SURROGATE RECOVERY STUDY			
TPH By SW8015 Mod		Amount Found [A]	True Amount [B]	Recovery %R [D]	Control Limits %R
Analytes					
1-Chlorooctane		108	99.5	109	70-135
o-Terphenyl		58.0	49.8	116	70-135

Lab Batch #: 906325

Sample: 456934-021 / SMP

Batch: 1 Matrix: Soil

Units: mg/kg Date Analyzed: 02/06/13 08:36		SURROGATE RECOVERY STUDY			
TPH By SW8015 Mod		Amount Found [A]	True Amount [B]	Recovery %R [D]	Control Limits %R
Analytes					
1-Chlorooctane		107	99.8	107	70-135
o-Terphenyl		57.7	49.9	116	70-135

* Surrogate outside of Laboratory QC limits

** Surrogates outside limits; data and surrogates confirmed by reanalysis

*** Poor recoveries due to dilution

Surrogate Recovery [D] = $100 * A / B$

All results are based on MDL and validated for QC purposes.

Form 2 - Surrogate Recoveries

Project Name: West Eunice Compressor

Work Orders : 456934,

Project ID: (1RP-2724)

Lab Batch #: 906325

Sample: 456934-027 / SMP

Batch: 1 Matrix: Soil

Units: mg/kg

Date Analyzed: 02/06/13 09:03

SURROGATE RECOVERY STUDY

TPH By SW8015 Mod Analytes	Amount Found [A]	True Amount [B]	Recovery %R [D]	Control Limits %R	Flags
1-Chlorooctane	107	99.6	107	70-135	
o-Terphenyl	56.8	49.8	114	70-135	

Lab Batch #: 906732

Sample: 456934-002 / SMP

Batch: 1 Matrix: Soil

Units: mg/kg

Date Analyzed: 02/11/13 15:49

SURROGATE RECOVERY STUDY

TPH By SW8015 Mod Analytes	Amount Found [A]	True Amount [B]	Recovery %R [D]	Control Limits %R	Flags
1-Chlorooctane	105	99.9	105	70-135	
o-Terphenyl	55.0	50.0	110	70-135	

Lab Batch #: 906732

Sample: 456934-004 / SMP

Batch: 1 Matrix: Soil

Units: mg/kg

Date Analyzed: 02/11/13 16:20

SURROGATE RECOVERY STUDY

TPH By SW8015 Mod Analytes	Amount Found [A]	True Amount [B]	Recovery %R [D]	Control Limits %R	Flags
1-Chlorooctane	109	99.8	109	70-135	
o-Terphenyl	57.6	49.9	115	70-135	

Lab Batch #: 906732

Sample: 456934-006 / SMP

Batch: 1 Matrix: Soil

Units: mg/kg

Date Analyzed: 02/11/13 16:55

SURROGATE RECOVERY STUDY

TPH By SW8015 Mod Analytes	Amount Found [A]	True Amount [B]	Recovery %R [D]	Control Limits %R	Flags
1-Chlorooctane	100	99.7	100	70-135	
o-Terphenyl	51.3	49.9	103	70-135	

Lab Batch #: 906732

Sample: 456934-008 / SMP

Batch: 1 Matrix: Soil

Units: mg/kg

Date Analyzed: 02/11/13 17:27

SURROGATE RECOVERY STUDY

TPH By SW8015 Mod Analytes	Amount Found [A]	True Amount [B]	Recovery %R [D]	Control Limits %R	Flags
1-Chlorooctane	105	99.8	105	70-135	
o-Terphenyl	53.7	49.9	108	70-135	

* Surrogate outside of Laboratory QC limits

** Surrogates outside limits; data and surrogates confirmed by reanalysis

*** Poor recoveries due to dilution

Surrogate Recovery [D] = $100 * A / B$

All results are based on MDL and validated for QC purposes.

Form 2 - Surrogate Recoveries

Project Name: West Eunice Compressor

Work Orders : 456934,

Project ID: (1RP-2724)

Lab Batch #: 906732

Sample: 456934-010 / SMP

Batch: 1 Matrix: Soil

Units: mg/kg Date Analyzed: 02/11/13 18:04		SURROGATE RECOVERY STUDY			
TPH By SW8015 Mod		Amount Found [A]	True Amount [B]	Recovery %R [D]	Control Limits %R
Analytes					
1-Chlorooctane		92.2	100	92	70-135
o-Terphenyl		47.4	50.1	95	70-135

Lab Batch #: 906732

Sample: 456934-012 / SMP

Batch: 1 Matrix: Soil

Units: mg/kg Date Analyzed: 02/11/13 18:39		SURROGATE RECOVERY STUDY			
TPH By SW8015 Mod		Amount Found [A]	True Amount [B]	Recovery %R [D]	Control Limits %R
Analytes					
1-Chlorooctane		96.3	99.6	97	70-135
o-Terphenyl		49.3	49.8	99	70-135

Lab Batch #: 906732

Sample: 456934-014 / SMP

Batch: 1 Matrix: Soil

Units: mg/kg Date Analyzed: 02/11/13 19:51		SURROGATE RECOVERY STUDY			
TPH By SW8015 Mod		Amount Found [A]	True Amount [B]	Recovery %R [D]	Control Limits %R
Analytes					
1-Chlorooctane		94.7	99.9	95	70-135
o-Terphenyl		48.6	50.0	97	70-135

Lab Batch #: 906732

Sample: 456934-016 / SMP

Batch: 1 Matrix: Soil

Units: mg/kg Date Analyzed: 02/11/13 20:25		SURROGATE RECOVERY STUDY			
TPH By SW8015 Mod		Amount Found [A]	True Amount [B]	Recovery %R [D]	Control Limits %R
Analytes					
1-Chlorooctane		102	99.6	102	70-135
o-Terphenyl		52.4	49.8	105	70-135

Lab Batch #: 906732

Sample: 456934-018 / SMP

Batch: 1 Matrix: Soil

Units: mg/kg Date Analyzed: 02/11/13 21:02		SURROGATE RECOVERY STUDY			
TPH By SW8015 Mod		Amount Found [A]	True Amount [B]	Recovery %R [D]	Control Limits %R
Analytes					
1-Chlorooctane		104	99.9	104	70-135
o-Terphenyl		53.7	50.0	107	70-135

* Surrogate outside of Laboratory QC limits

** Surrogates outside limits; data and surrogates confirmed by reanalysis

*** Poor recoveries due to dilution

Surrogate Recovery [D] = $100 * A / B$

All results are based on MDL and validated for QC purposes.

Form 2 - Surrogate Recoveries

Project Name: West Eunice Compressor

Work Orders : 456934,

Project ID: (1RP-2724)

Lab Batch #: 906732

Sample: 456934-020 / SMP

Batch: 1 Matrix: Soil

Units: mg/kg Date Analyzed: 02/11/13 21:36		SURROGATE RECOVERY STUDY			
TPH By SW8015 Mod		Amount Found [A]	True Amount [B]	Recovery %R [D]	Control Limits %R
Analytes					
1-Chlorooctane		106	99.8	106	70-135
o-Terphenyl		55.1	49.9	110	70-135

Lab Batch #: 906732

Sample: 456934-022 / SMP

Batch: 1 Matrix: Soil

Units: mg/kg Date Analyzed: 02/11/13 22:10		SURROGATE RECOVERY STUDY			
TPH By SW8015 Mod		Amount Found [A]	True Amount [B]	Recovery %R [D]	Control Limits %R
Analytes					
1-Chlorooctane		105	100	105	70-135
o-Terphenyl		54.8	50.1	109	70-135

Lab Batch #: 906732

Sample: 456934-024 / SMP

Batch: 1 Matrix: Soil

Units: mg/kg Date Analyzed: 02/11/13 22:44		SURROGATE RECOVERY STUDY			
TPH By SW8015 Mod		Amount Found [A]	True Amount [B]	Recovery %R [D]	Control Limits %R
Analytes					
1-Chlorooctane		109	99.9	109	70-135
o-Terphenyl		56.5	50.0	113	70-135

Lab Batch #: 906732

Sample: 456934-026 / SMP

Batch: 1 Matrix: Soil

Units: mg/kg Date Analyzed: 02/11/13 23:18		SURROGATE RECOVERY STUDY			
TPH By SW8015 Mod		Amount Found [A]	True Amount [B]	Recovery %R [D]	Control Limits %R
Analytes					
1-Chlorooctane		109	99.9	109	70-135
o-Terphenyl		56.5	50.0	113	70-135

Lab Batch #: 906732

Sample: 456934-028 / SMP

Batch: 1 Matrix: Soil

Units: mg/kg Date Analyzed: 02/11/13 23:51		SURROGATE RECOVERY STUDY			
TPH By SW8015 Mod		Amount Found [A]	True Amount [B]	Recovery %R [D]	Control Limits %R
Analytes					
1-Chlorooctane		107	99.8	107	70-135
o-Terphenyl		55.5	49.9	111	70-135

* Surrogate outside of Laboratory QC limits

** Surrogates outside limits; data and surrogates confirmed by reanalysis

*** Poor recoveries due to dilution

Surrogate Recovery [D] = $100 * A / B$

All results are based on MDL and validated for QC purposes.

Form 2 - Surrogate Recoveries

Project Name: West Eunice Compressor

Work Orders : 456934,

Project ID: (1RP-2724)

Lab Batch #: 906732

Sample: 456934-030 / SMP

Batch: 1 Matrix: Soil

Units: mg/kg Date Analyzed: 02/12/13 00:25		SURROGATE RECOVERY STUDY			
TPH By SW8015 Mod		Amount Found [A]	True Amount [B]	Recovery %R [D]	Control Limits %R
Analytes					
1-Chlorooctane		109	99.5	110	70-135
o-Terphenyl		56.8	49.8	114	70-135

Lab Batch #: 906732

Sample: 456934-032 / SMP

Batch: 1 Matrix: Soil

Units: mg/kg Date Analyzed: 02/12/13 00:59		SURROGATE RECOVERY STUDY			
TPH By SW8015 Mod		Amount Found [A]	True Amount [B]	Recovery %R [D]	Control Limits %R
Analytes					
1-Chlorooctane		98.2	99.9	98	70-135
o-Terphenyl		50.9	50.0	102	70-135

Lab Batch #: 906325

Sample: 633397-1-BLK / BLK

Batch: 1 Matrix: Solid

Units: mg/kg Date Analyzed: 02/05/13 13:43		SURROGATE RECOVERY STUDY			
TPH By SW8015 Mod		Amount Found [A]	True Amount [B]	Recovery %R [D]	Control Limits %R
Analytes					
1-Chlorooctane		110	99.7	110	70-135
o-Terphenyl		59.1	49.9	118	70-135

Lab Batch #: 906732

Sample: 633683-1-BLK / BLK

Batch: 1 Matrix: Solid

Units: mg/kg Date Analyzed: 02/11/13 13:11		SURROGATE RECOVERY STUDY			
TPH By SW8015 Mod		Amount Found [A]	True Amount [B]	Recovery %R [D]	Control Limits %R
Analytes					
1-Chlorooctane		113	100	113	70-135
o-Terphenyl		58.3	50.0	117	70-135

Lab Batch #: 906325

Sample: 633397-1-BKS / BKS

Batch: 1 Matrix: Solid

Units: mg/kg Date Analyzed: 02/05/13 12:48		SURROGATE RECOVERY STUDY			
TPH By SW8015 Mod		Amount Found [A]	True Amount [B]	Recovery %R [D]	Control Limits %R
Analytes					
1-Chlorooctane		103	99.9	103	70-135
o-Terphenyl		57.1	50.0	114	70-135

* Surrogate outside of Laboratory QC limits

** Surrogates outside limits; data and surrogates confirmed by reanalysis

*** Poor recoveries due to dilution

Surrogate Recovery [D] = $100 * A / B$

All results are based on MDL and validated for QC purposes.

Form 2 - Surrogate Recoveries

Project Name: West Eunice Compressor

Work Orders : 456934,

Project ID: (1RP-2724)

Lab Batch #: 906732

Sample: 633683-1-BKS / BKS

Batch: 1 Matrix: Solid

Units: mg/kg Date Analyzed: 02/11/13 12:09		SURROGATE RECOVERY STUDY			
TPH By SW8015 Mod		Amount Found [A]	True Amount [B]	Recovery %R [D]	Control Limits %R
Analytes					
1-Chlorooctane		119	99.9	119	70-135
o-Terphenyl		46.1	50.0	92	70-135

Lab Batch #: 906325

Sample: 633397-1-BSD / BSD

Batch: 1 Matrix: Solid

Units: mg/kg Date Analyzed: 02/05/13 13:16		SURROGATE RECOVERY STUDY			
TPH By SW8015 Mod		Amount Found [A]	True Amount [B]	Recovery %R [D]	Control Limits %R
Analytes					
1-Chlorooctane		110	99.9	110	70-135
o-Terphenyl		59.2	50.0	118	70-135

Lab Batch #: 906732

Sample: 633683-1-BSD / BSD

Batch: 1 Matrix: Solid

Units: mg/kg Date Analyzed: 02/11/13 12:40		SURROGATE RECOVERY STUDY			
TPH By SW8015 Mod		Amount Found [A]	True Amount [B]	Recovery %R [D]	Control Limits %R
Analytes					
1-Chlorooctane		121	99.9	121	70-135
o-Terphenyl		47.0	50.0	94	70-135

Lab Batch #: 906325

Sample: 456934-003 S / MS

Batch: 1 Matrix: Soil

Units: mg/kg Date Analyzed: 02/06/13 01:37		SURROGATE RECOVERY STUDY			
TPH By SW8015 Mod		Amount Found [A]	True Amount [B]	Recovery %R [D]	Control Limits %R
Analytes					
1-Chlorooctane		102	97.1	105	70-135
o-Terphenyl		57.6	48.5	119	70-135

Lab Batch #: 906732

Sample: 456934-008 S / MS

Batch: 1 Matrix: Soil

Units: mg/kg Date Analyzed: 02/12/13 01:33		SURROGATE RECOVERY STUDY			
TPH By SW8015 Mod		Amount Found [A]	True Amount [B]	Recovery %R [D]	Control Limits %R
Analytes					
1-Chlorooctane		116	100	116	70-135
o-Terphenyl		49.5	50.0	99	70-135

* Surrogate outside of Laboratory QC limits

** Surrogates outside limits; data and surrogates confirmed by reanalysis

*** Poor recoveries due to dilution

Surrogate Recovery [D] = $100 * A / B$

All results are based on MDL and validated for QC purposes.



Form 2 - Surrogate Recoveries

Project Name: West Eunice Compressor

Work Orders : 456934,

Project ID: (1RP-2724)

Lab Batch #: 906325

Sample: 456934-003 SD / MSD

Batch: 1 Matrix: Soil

Units: mg/kg

Date Analyzed: 02/06/13 02:08

SURROGATE RECOVERY STUDY

TPH By SW8015 Mod Analytes	Amount Found [A]	True Amount [B]	Recovery %R [D]	Control Limits %R	Flags
1-Chlorooctane	105	100	105	70-135	
o-Terphenyl	61.4	50.1	123	70-135	

Lab Batch #: 906732

Sample: 456934-008 SD / MSD

Batch: 1 Matrix: Soil

Units: mg/kg

Date Analyzed: 02/12/13 02:06

SURROGATE RECOVERY STUDY

TPH By SW8015 Mod Analytes	Amount Found [A]	True Amount [B]	Recovery %R [D]	Control Limits %R	Flags
1-Chlorooctane	117	99.8	117	70-135	
o-Terphenyl	50.7	49.9	102	70-135	

* Surrogate outside of Laboratory QC limits

** Surrogates outside limits; data and surrogates confirmed by reanalysis

*** Poor recoveries due to dilution

Surrogate Recovery [D] = $100 * A / B$

All results are based on MDL and validated for QC purposes.

Project Name: West Eunice Compressor

Work Order #: 456934

Project ID: (1RP-2724)

Lab Batch #: 906481

Sample: 633492-1-BKS

Matrix: Solid

Date Analyzed: 02/07/2013

Date Prepared: 02/07/2013

Analyst: RKO

Reporting Units: mg/kg

Batch #: 1

BLANK /BLANK SPIKE RECOVERY STUDY

Inorganic Anions by EPA 300/300.1	Blank Result [A]	Spike Added [B]	Blank Spike Result [C]	Blank Spike %R [D]	Control Limits %R	Flags
Analytes						
Chloride	<1.00	100	106	106	80-120	

Lab Batch #: 906768

Sample: 633706-1-BKS

Matrix: Solid

Date Analyzed: 02/12/2013

Date Prepared: 02/12/2013

Analyst: RKO

Reporting Units: mg/kg

Batch #: 1

BLANK /BLANK SPIKE RECOVERY STUDY

Inorganic Anions by EPA 300/300.1	Blank Result [A]	Spike Added [B]	Blank Spike Result [C]	Blank Spike %R [D]	Control Limits %R	Flags
Analytes						
Chloride	<1.00	100	101	101	80-120	

Blank Spike Recovery [D] = $100 \times [C] / [B]$

All results are based on MDL and validated for QC purposes.

BRL - Below Reporting Limit

Project Name: West Eunice Compressor

Work Order #: 456934

Analyst: KEB

Date Prepared: 02/05/2013

Project ID: (1RP-2724)

Date Analyzed: 02/05/2013

Lab Batch ID: 906325

Sample: 633397-1-BKS

Batch #: 1

Matrix: Solid

Units: mg/kg

BLANK /BLANK SPIKE / BLANK SPIKE DUPLICATE RECOVERY STUDY

TPH By SW8015 Mod	Blank Sample Result [A]	Spike Added [B]	Blank Spike Result [C]	Blank Spike %R [D]	Spike Added [E]	Blank Spike Duplicate Result [F]	Blk. Spk Dup. %R [G]	RPD %	Control Limits %R	Control Limits %RPD	Flag
Analytes											
C6-C12 Gasoline Range Hydrocarbons	<15.0	999	1010	101	999	1040	104	3	70-135	35	
C12-C28 Diesel Range Hydrocarbons	<15.0	999	1050	105	999	1080	108	3	70-135	35	

Analyst: KEB

Date Prepared: 02/11/2013

Date Analyzed: 02/11/2013

Lab Batch ID: 906732

Sample: 633683-1-BKS

Batch #: 1

Matrix: Solid

Units: mg/kg

BLANK /BLANK SPIKE / BLANK SPIKE DUPLICATE RECOVERY STUDY

TPH By SW8015 Mod	Blank Sample Result [A]	Spike Added [B]	Blank Spike Result [C]	Blank Spike %R [D]	Spike Added [E]	Blank Spike Duplicate Result [F]	Blk. Spk Dup. %R [G]	RPD %	Control Limits %R	Control Limits %RPD	Flag
Analytes											
C6-C12 Gasoline Range Hydrocarbons	<15.0	999	1040	104	999	1060	106	2	70-135	35	
C12-C28 Diesel Range Hydrocarbons	<15.0	999	1080	108	999	1100	110	2	70-135	35	

Relative Percent Difference RPD = $200 * |(C-F)/(C+F)|$

Blank Spike Recovery [D] = $100 * (C)/[B]$

Blank Spike Duplicate Recovery [G] = $100 * (F)/[E]$

All results are based on MDL and Validated for QC Purposes



Form 3 - MS / MSD Recoveries



Project Name: West Eunice Compressor

Work Order #: 456934

Project ID: (IRP-2724)

Lab Batch ID: 906481

QC- Sample ID: 456934-005 S

Batch #: 1 Matrix: Soil

Date Analyzed: 02/07/2013

Date Prepared: 02/07/2013

Analyst: RKO

Reporting Units: mg/kg

MATRIX SPIKE / MATRIX SPIKE DUPLICATE RECOVERY STUDY											
Inorganic Anions by EPA 300/300.1	Parent Sample Result [A]	Spike Added [B]	Spiked Sample Result [C]	Spiked Sample %R [D]	Spike Added [E]	Duplicate Spiked Sample Result [F]	Spiked Dup. %R [G]	RPD %	Control Limits %R	Control Limits %RPD	Flag
Analytes											
Chloride	3.27	107	117	106	107	116	105	1	80-120	20	

Lab Batch ID: 906768

QC- Sample ID: 456934-030 S

Batch #: 1 Matrix: Soil

Date Analyzed: 02/12/2013

Date Prepared: 02/12/2013

Analyst: RKO

Reporting Units: mg/kg

MATRIX SPIKE / MATRIX SPIKE DUPLICATE RECOVERY STUDY											
Inorganic Anions by EPA 300/300.1	Parent Sample Result [A]	Spike Added [B]	Spiked Sample Result [C]	Spiked Sample %R [D]	Spike Added [E]	Duplicate Spiked Sample Result [F]	Spiked Dup. %R [G]	RPD %	Control Limits %R	Control Limits %RPD	Flag
Analytes											
Chloride	9.27	100	112	103	100	116	107	4	80-120	20	

Lab Batch ID: 906768

QC- Sample ID: 456934-032 S

Batch #: 1 Matrix: Soil

Date Analyzed: 02/12/2013

Date Prepared: 02/12/2013

Analyst: RKO

Reporting Units: mg/kg

MATRIX SPIKE / MATRIX SPIKE DUPLICATE RECOVERY STUDY											
Inorganic Anions by EPA 300/300.1	Parent Sample Result [A]	Spike Added [B]	Spiked Sample Result [C]	Spiked Sample %R [D]	Spike Added [E]	Duplicate Spiked Sample Result [F]	Spiked Dup. %R [G]	RPD %	Control Limits %R	Control Limits %RPD	Flag
Analytes											
Chloride	2.44	100	106	104	100	109	107	3	80-120	20	

Matrix Spike Percent Recovery $[D] = 100 * (C - A) / B$
Relative Percent Difference $RPD = 200 * |(C - F) / (C + F)|$

Matrix Spike Duplicate Percent Recovery $[G] = 100 * (F - A) / E$

ND = Not Detected, J = Present Below Reporting Limit, B = Present in Blank, NR = Not Requested, I = Interference, NA = Not

ApplicableN = See Narrative, EQL = Estimated Quantitation Limit



Form 3 - MS / MSD Recoveries



Project Name: West Eunice Compressor

Work Order # : 456934

Project ID: (IRP-2724)

Lab Batch ID: 906768

QC- Sample ID: 457380-001 S

Batch #: 1 **Matrix:** Soil

Date Analyzed: 02/12/2013

Date Prepared: 02/12/2013

Analyst: RKO

Reporting Units: mg/kg

MATRIX SPIKE / MATRIX SPIKE DUPLICATE RECOVERY STUDY											
Inorganic Anions by EPA 300/300.1	Parent Sample Result [A]	Spike Added [B]	Spiked Sample Result [C]	Spiked Sample %R [D]	Spike Added [E]	Duplicate Spiked Sample Result [F]	Spiked Dup. %R [G]	RPD %	Control Limits %R	Control Limits %RPD	Flag
Chloride	8.79	99.9	109	100	99.9	110	101	1	80-120	20	

Lab Batch ID: 906325

QC- Sample ID: 456934-003 S

Batch #: 1 **Matrix:** Soil

Date Analyzed: 02/06/2013

Date Prepared: 02/05/2013

Analyst: KEB

Reporting Units: mg/kg

MATRIX SPIKE / MATRIX SPIKE DUPLICATE RECOVERY STUDY											
TPH By SW8015 Mod	Parent Sample Result [A]	Spike Added [B]	Spiked Sample Result [C]	Spiked Sample %R [D]	Spike Added [E]	Duplicate Spiked Sample Result [F]	Spiked Dup. %R [G]	RPD %	Control Limits %R	Control Limits %RPD	Flag
C6-C12 Gasoline Range Hydrocarbons	<19.1	1270	1260	99	1310	1310	100	4	70-135	35	
C12-C28 Diesel Range Hydrocarbons	<19.1	1270	1290	102	1310	1340	102	4	70-135	35	

Lab Batch ID: 906732

QC- Sample ID: 456934-008 S

Batch #: 1 **Matrix:** Soil

Date Analyzed: 02/12/2013

Date Prepared: 02/11/2013

Analyst: KEB

Reporting Units: mg/kg

MATRIX SPIKE / MATRIX SPIKE DUPLICATE RECOVERY STUDY											
TPH By SW8015 Mod	Parent Sample Result [A]	Spike Added [B]	Spiked Sample Result [C]	Spiked Sample %R [D]	Spike Added [E]	Duplicate Spiked Sample Result [F]	Spiked Dup. %R [G]	RPD %	Control Limits %R	Control Limits %RPD	Flag
C6-C12 Gasoline Range Hydrocarbons	<15.6	1040	1060	102	1040	1070	103	1	70-135	35	
C12-C28 Diesel Range Hydrocarbons	<15.6	1040	1100	106	1040	1110	107	1	70-135	35	

Matrix Spike Percent Recovery [D] = 100*(C-A)/B
Relative Percent Difference RPD = 200*|(C-F)/(C+F)|

Matrix Spike Duplicate Percent Recovery [G] = 100*(F-A)/E

ND = Not Detected, J = Present Below Reporting Limit, B = Present in Blank, NR = Not Requested, I = Interference, NA = Not

ApplicableN = See Narrative, EQL = Estimated Quantitation Limit

Project Name: West Eunice Compressor

Work Order #: 456934

Lab Batch #: 906255

Project ID: (1RP-2724)

Date Analyzed: 02/05/2013 12:45

Date Prepared: 02/05/2013

Analyst: WRU

QC- Sample ID: 456826-001 D

Batch #: 1

Matrix: Soil

Reporting Units: %

SAMPLE / SAMPLE DUPLICATE RECOVERY

Percent Moisture	Parent Sample Result [A]	Sample Duplicate Result [B]	RPD	Control Limits %RPD	Flag
Analyte					
Percent Moisture	7.30	7.30	0	20	

Lab Batch #: 906257

Date Analyzed: 02/05/2013 12:45

Date Prepared: 02/05/2013

Analyst: WRU

QC- Sample ID: 456934-008 D

Batch #: 1

Matrix: Soil

Reporting Units: %

SAMPLE / SAMPLE DUPLICATE RECOVERY

Percent Moisture	Parent Sample Result [A]	Sample Duplicate Result [B]	RPD	Control Limits %RPD	Flag
Analyte					
Percent Moisture	3.72	3.97	7	20	

Lab Batch #: 906259

Date Analyzed: 02/05/2013 12:45

Date Prepared: 02/05/2013

Analyst: WRU

QC- Sample ID: 456934-028 D

Batch #: 1

Matrix: Soil

Reporting Units: %

SAMPLE / SAMPLE DUPLICATE RECOVERY

Percent Moisture	Parent Sample Result [A]	Sample Duplicate Result [B]	RPD	Control Limits %RPD	Flag
Analyte					
Percent Moisture	16.7	18.1	8	20	

Lab Batch #: 906291

Date Analyzed: 02/05/2013 16:40

Date Prepared: 02/05/2013

Analyst: WRU

QC- Sample ID: 456934-030 D

Batch #: 1

Matrix: Soil

Reporting Units: %

SAMPLE / SAMPLE DUPLICATE RECOVERY

Percent Moisture	Parent Sample Result [A]	Sample Duplicate Result [B]	RPD	Control Limits %RPD	Flag
Analyte					
Percent Moisture	19.5	20.4	5	20	

Spike Relative Difference RPD $200 * |(B-A)/(B+A)|$

All Results are based on MDL and validated for QC purposes.

BRL - Below Reporting Limit

Xenco Laboratories

CHAIN OF CUSTODY RECORD AND ANALYSIS REQUEST

12600 West I-20 East
Odessa, Texas 79765

Phone: 432-563-1800
Fax: 432-563-1713

Project Manager: Joel Lowry

Project Name: West Eunice Compressor

Company Name: Basin Environmental Service Technologies, LLC

Project #: (1RP-2724)

Company Address: P.O. Box 301

Project Loc: Lea County, NM

City/State/Zip: Lovington, NM 88260

PO #: Bill Southern Union Gas

Telephone No: (575)396-2378

Fax No: (575) 396-1429

Report Format: ☒ Standard ☐ TRRP ☐ NPDES

Sampler Signature: Joel Lowry

e-mail: pm@basinenv.com, cyndi.inskeep@sug.com, rose.slade@sug.com

(lab use only)
ORDER #: 456934

ORDER #: 136434

LAB # (lab use only)	FIELD CODE	Beginning Depth	Ending Depth	Date Sampled	Time Sampled	Field Filtered	Total #. of Containers	Preservation & # of Containers										Matrix										RUSH TAT (Pre-Schedule) 24, 48, 72	Standard TAT 4 DAY						
								Ice	HNO ₃	HCl	H ₂ SO ₄	NaOH	Na ₂ S ₂ O ₃	None	Other (Specify)	DW = Drinking Water SL = Sludge	CW = Groundwater S = Soil/Sol	NP = Non-Potable Specify Other	TPH: 418.1 8015M 8015B	TPH: TX 1005 TX 1006	Cations (Ca, Mg, Na, K)	Anions (Cl, SO ₄ , Alkalinity)	SAR / ESP / CEC	Metals: As Ag Ba Cd Cr Pb Hg Se	Volatiles	Semivolatiles	BTEX 8021B/5030 or BTEX 8260			RCI	N.O.R.M.	CHLORIDES	Total Dissolved Solids		
01	SB-1 @ 6"			1/31/2013	900		1	X										X																	X
02	SB-1 @ 4'			1/31/2013	915		1	X										X																	
03	SB-2 @ 6"			1/31/2013	930		1	X										X																	X
04	SB-2 @ 4'			1/31/2013	945		1	X										X																	
05	SB-3 @ 6"			1/31/2013	1000		1	X										X																	X
06	SB-3 @ 4'			1/31/2013	1015		1	X										X																	
07	SB-4 @ 6"			1/31/2013	1030		1	X										X																	X
08	SB-4 @ 4'			1/31/2013	1045		1	X										X																	X
09	SB-5 @ 6"			1/31/2013	1100		1	X										X																	X
10	SB-5 @ 4'			1/31/2013	1115		1	X										X																	X

Special Instructions:

Hold 4' Samples Pending 6" Results

Laboratory Comments:

Sample Containers Intact? Y N
VOCs Free of Headspace? Y N
Labels on container(s) Y N
Custody seals on container(s) Y N
Custody seals on cooler(s) Y N
Sample Hand Delivered by Sampler/Client Rep. ? Y N
by Courier? UPS DHL FedEx Lone Star
Temperature Upon Receipt: 5.5 °C

Relinquished by: <u>Joel Lowry</u>	Date: <u>2-1-13</u>	Time: <u>1256</u>	Received by: <u>Steve Butler</u>	Date: <u>2-1-13</u>	Time: <u>1256</u>
Relinquished by: <u>Joel Lowry</u>	Date: <u>2-1-13</u>	Time: <u>1256</u>	Received by: <u>Shane Smith</u>	Date: <u>2-4-13</u>	Time: <u>10:46</u>
Relinquished by: <u>Shane Smith</u>	Date: <u>2-4-13</u>	Time: <u>10:46</u>	Received by: <u>Shane Smith</u>	Date: <u>2-4-13</u>	Time: <u>10:46</u>

Xenco Laboratories

CHAIN OF CUSTODY RECORD AND ANALYSIS REQUEST

12600 West I-20 East
Odessa, Texas 79765

Phone: 432-563-1800
Fax: 432-563-1713

Project Manager: Joel Lowry

Project Name: West Eunice Compressor

Company Name: Basin Environmental Service Technologies, LLC

Project #: (1RP-2724)

Company Address: P.O. Box 301

Project Loc: Lea County, NM

City/State/Zip: Lovington, NM 88260

PO #: Bill Southern Union Gas

Telephone No: (575)396-2378

Fax No: (575) 396-1429

Report Format: ☒ Standard ☐ TRRP ☐ NPDES

Sampler Signature: Joel Lowry

e-mail: pm@basinenv.com, cyndi.inskeep@sug.com, rose.slade@sug.com

(lab use only)
ORDER #: 456934

(lab use only)		ORDER #:																																																																																																																																																																																																																																																																																																																																																																																																																																																																																																																																																																																																																																																																																																																																																																																																																																																																																																																																																																																																																																																																																																																																																																																																																																																																																																																																																																																																																																																																																																																																																																																																																																																	
----------------	--	----------	--	--	--	--	--	--	--	--	--	--	--	--	--	--	--	--	--	--	--	--	--	--	--	--	--	--	--	--	--	--	--	--	--	--	--	--	--	--	--	--	--	--	--	--	--	--	--	--	--	--	--	--	--	--	--	--	--	--	--	--	--	--	--	--	--	--	--	--	--	--	--	--	--	--	--	--	--	--	--	--	--	--	--	--	--	--	--	--	--	--	--	--	--	--	--	--	--	--	--	--	--	--	--	--	--	--	--	--	--	--	--	--	--	--	--	--	--	--	--	--	--	--	--	--	--	--	--	--	--	--	--	--	--	--	--	--	--	--	--	--	--	--	--	--	--	--	--	--	--	--	--	--	--	--	--	--	--	--	--	--	--	--	--	--	--	--	--	--	--	--	--	--	--	--	--	--	--	--	--	--	--	--	--	--	--	--	--	--	--	--	--	--	--	--	--	--	--	--	--	--	--	--	--	--	--	--	--	--	--	--	--	--	--	--	--	--	--	--	--	--	--	--	--	--	--	--	--	--	--	--	--	--	--	--	--	--	--	--	--	--	--	--	--	--	--	--	--	--	--	--	--	--	--	--	--	--	--	--	--	--	--	--	--	--	--	--	--	--	--	--	--	--	--	--	--	--	--	--	--	--	--	--	--	--	--	--	--	--	--	--	--	--	--	--	--	--	--	--	--	--	--	--	--	--	--	--	--	--	--	--	--	--	--	--	--	--	--	--	--	--	--	--	--	--	--	--	--	--	--	--	--	--	--	--	--	--	--	--	--	--	--	--	--	--	--	--	--	--	--	--	--	--	--	--	--	--	--	--	--	--	--	--	--	--	--	--	--	--	--	--	--	--	--	--	--	--	--	--	--	--	--	--	--	--	--	--	--	--	--	--	--	--	--	--	--	--	--	--	--	--	--	--	--	--	--	--	--	--	--	--	--	--	--	--	--	--	--	--	--	--	--	--	--	--	--	--	--	--	--	--	--	--	--	--	--	--	--	--	--	--	--	--	--	--	--	--	--	--	--	--	--	--	--	--	--	--	--	--	--	--	--	--	--	--	--	--	--	--	--	--	--	--	--	--	--	--	--	--	--	--	--	--	--	--	--	--	--	--	--	--	--	--	--	--	--	--	--	--	--	--	--	--	--	--	--	--	--	--	--	--	--	--	--	--	--	--	--	--	--	--	--	--	--	--	--	--	--	--	--	--	--	--	--	--	--	--	--	--	--	--	--	--	--	--	--	--	--	--	--	--	--	--	--	--	--	--	--	--	--	--	--	--	--	--	--	--	--	--	--	--	--	--	--	--	--	--	--	--	--	--	--	--	--	--	--	--	--	--	--	--	--	--	--	--	--	--	--	--	--	--	--	--	--	--	--	--	--	--	--	--	--	--	--	--	--	--	--	--	--	--	--	--	--	--	--	--	--	--	--	--	--	--	--	--	--	--	--	--	--	--	--	--	--	--	--	--	--	--	--	--	--	--	--	--	--	--	--	--	--	--	--	--	--	--	--	--	--	--	--	--	--	--	--	--	--	--	--	--	--	--	--	--	--	--	--	--	--	--	--	--	--	--	--	--	--	--	--	--	--	--	--	--	--	--	--	--	--	--	--	--	--	--	--	--	--	--	--	--	--	--	--	--	--	--	--	--	--	--	--	--	--	--	--	--	--	--	--	--	--	--	--	--	--	--	--	--	--	--	--	--	--	--	--	--	--	--	--	--	--	--	--	--	--	--	--	--	--	--	--	--	--	--	--	--	--	--	--	--	--	--	--	--	--	--	--	--	--	--	--	--	--	--	--	--	--	--	--	--	--	--	--	--	--	--	--	--	--	--	--	--	--	--	--	--	--	--	--	--	--	--	--	--	--	--	--	--	--	--	--	--	--	--	--	--	--	--	--	--	--	--	--	--	--	--	--	--	--	--	--	--	--	--	--	--	--	--	--	--	--	--	--	--	--	--	--	--	--	--	--	--	--	--	--	--	--	--	--	--	--	--	--	--	--	--	--	--	--	--	--	--	--	--	--	--	--	--	--	--	--	--	--	--	--	--	--	--	--	--	--	--	--	--	--	--	--	--	--	--	--	--	--	--	--	--	--	--	--	--	--	--	--	--	--	--	--	--	--	--	--	--	--	--	--	--	--	--	--	--	--	--	--	--	--	--	--	--	--	--	--	--	--	--	--	--	--	--	--	--	--	--	--	--	--	--	--	--	--	--	--	--	--	--	--	--	--	--	--	--	--	--	--	--	--	--	--	--	--	--	--	--	--	--	--	--	--	--	--	--	--	--	--	--	--	--	--	--	--	--	--	--	--	--	--	--	--	--	--	--	--	--	--	--	--	--	--	--	--	--	--	--	--	--	--	--	--	--	--	--	--	--	--	--	--	--	--	--	--	--	--	--	--	--	--	--	--	--	--	--	--	--	--	--	--	--	--	--	--	--	--	--	--	--	--	--	--	--	--	--	--	--	--	--	--	--	--	--	--	--	--	--	--	--	--	--	--	--	--	--	--	--	--	--	--	--	--	--	--	--	--	--	--	--	--	--	--	--	--	--	--	--	--	--	--	--	--	--	--	--	--	--	--	--	--	--	--	--	--	--	--	--	--	--	--	--	--	--	--	--	--	--	--	--	--	--	--	--	--	--	--	--	--	--	--	--	--	--	--	--	--	--	--	--	--	--	--	--	--	--	--	--	--	--	--	--	--	--	--	--	--	--	--	--	--	--	--	--	--	--	--	--	--	--	--	--	--	--	--	--	--	--	--	--	--	--	--	--	--	--	--	--	--	--	--	--	--	--	--	--	--	--	--	--	--	--	--	--	--	--	--	--	--	--	--	--	--	--	--	--	--	--	--	--	--	--	--	--	--	--	--	--	--	--	--	--	--	--	--	--	--	--	--	--	--	--	--	--	--	--	--	--	--	--	--	--	--	--	--	--	--	--	--	--	--	--	--	--	--	--	--	--	--	--	--	--	--	--	--	--	--	--	--	--	--	--	--	--	--	--	--	--	--	--	--	--	--	--	--	--	--	--	--	--	--	--	--	--	--	--	--	--	--	--	--	--	--	--	--	--	--	--	--	--	--	--	--	--	--	--	--	--	--	--	--	--	--	--	--	--	--	--	--	--	--	--	--	--	--	--	--	--	--	--	--	--	--	--	--	--	--	--	--	--	--	--	--	--	--	--	--	--	--	--	--	--	--	--	--	--	--	--	--	--	--	--	--	--	--	--	--	--	--	--	--	--	--	--	--	--	--	--	--	--	--	--	--	--	--	--	--	--	--	--	--	--	--	--	--	--	--	--	--	--	--	--	--	--	--	--	--	--	--	--	--	--	--	--	--	--	--	--	--	--	--	--	--	--	--	--	--	--	--	--	--	--	--	--	--	--	--	--	--	--	--	--	--	--	--	--	--	--	--	--	--	--	--	--	--	--	--	--	--	--	--	--	--	--	--	--	--	--	--	--	--	--	--	--	--	--	--	--	--	--	--	--	--	--	--	--	--	--	--	--	--	--	--	--	--	--	--	--	--	--	--	--	--	--	--	--	--	--	--	--	--	--	--	--	--	--	--	--	--	--	--	--	--

Special Instructions:

Hold 4' samples Pending 6" Results

Relinquished by:	Date	Time	Received by:	Date	Time	Laboratory Comments: Sample Containers Intact? <input checked="" type="checkbox"/> Y <input type="checkbox"/> N VOCs Free of Headspace? <input checked="" type="checkbox"/> Y <input type="checkbox"/> N Labels on container(s) <input checked="" type="checkbox"/> Y <input type="checkbox"/> N Custody seals on container(s) <input checked="" type="checkbox"/> Y <input type="checkbox"/> N Custody seals on cooler(s) <input checked="" type="checkbox"/> Y <input type="checkbox"/> N Sample Hand Delivered by Sampler/Client Rep. ? <input checked="" type="checkbox"/> Y <input type="checkbox"/> N by Courier? UPS DHL FedEx Lone Star Temperature Upon Receipt: 5.5°C				
<u>Joel Lowry</u>	2-1-13	12:56	<u>Steve Butler</u>	2-1-13	12:56					
Relinquished by:	Date	Time	Received by:	Date	Time					
Relinquished by:	Date	Time	Received by ELOT:	Date	Time					
			<u>Shaunee Smith</u>	2-4-13	10:46					

Xenco Laboratories

CHAIN OF CUSTODY RECORD AND ANALYSIS REQUEST

**12600 West I-20 East
Odessa, Texas 79765**

Phone: 432-563-1800
Fax: 432-563-1713

Project Manager: Joel Lowry

Project Name: West Eunice Compressor

Company Name **Basin Environmental Service Technologies, LLC**

Project #: (1RP-2724)

Company Address: P.O. Box 301

Project Loc: Lea County, NM

City/State/Zip: Lovington, NM 88260

PO #: Bill Southern Union Gas

Telephone No: (575)396-2378

Fax No: (575) 396-1429

Report Format: ☒ Standard ☐ TRRP ☐ NPDES

Sampler Signature:

e-mail: pm@basinenv.com, cyndi.inskeep@sug.com, rose.slade@sug.com

[illegible]**Special Instructions:**

Hold 4' Samples Pending 6" Results

Laboratory Comments:

Sample Containers Intact?	<u>Y</u>	N
VOCs Free of Headspace?	<u>Y</u>	N
Labels on container(s)	<u>Y</u>	N
Custody seals on container(s)	Y	<u>N</u>
Custody seals on cooler(s)	<u>Y</u>	N
Sample Hand Delivered	<u>Y</u>	N
by Sampler/Client Rep. ?	<u>Y</u>	N
by Courier?	UPS	DHL
	FedEx	Lone Star
Temperature Upon Receipt:	<u>5</u>	°C

Xenco Laboratories

CHAIN OF CUSTODY RECORD AND ANALYSIS REQUEST

**12600 West I-20 East
Odessa, Texas 79765**

Phone: 432-563-1800
Fax: 432-563-1713

Project Manager: Joel Lowry

Project Name: West Eunice Compressor

Company Name **Basin Environmental Service Technologies, LLC**

Project #: (1RP-2724)

Company Address: P.O. Box 301

Project Loc: Lea County, NM

City/State/Zip: Lovington, NM 88260

PO #: Bill Southern Union Gas

Telephone No: (575)396-2378

Fax No: (575) 396-1429

Report Format: ☒ Standard ☐ TRRP ☐ NPDES

Sampler Signature:

e-mail: pm@basinenv.com, cyndi.inskeep@sug.com, rose.slade@sug.com

(lab use only) **ORDER #:** 456934

[illegible]**Special Instructions:**

Hold 4' Samples Pending 6" Results

Laboratory Comments:

Sample Containers Intact?	Y	N
VOCs Free of Headspace?	Y	N
Labels on container(s)	Y	N
Custody seals on container(s)	Y	N
Custody seals on cooler(s)	Y	N
Sample Hand Delivered	Y	N
by Sampler/Client Rep. ?	Y	N
by Courier?	UPS	DHL FedEx Lone Star
Temperature Upon Receipt:	5-5	°C

Relinquished by:	Date	Time	Received by:	Date	Time
<i>Joel Young</i>	2-1-13	12:56	<i>Steve Butler</i>	2-1-13	12:56
Relinquished by:	Date	Time	Received by:	Date	Time
Relinquished by:	Date	Time	Received by ELOT:	Date	Time
			<i>Maureen M...</i>	2-4-13	10:4



Prelogin/Nonconformance Report- Sample Log-In

Client: Southern Union Gas Services- Monahan

Date/ Time Received: 02/04/2013 10:46:00 AM

Work Order #: 456934

Acceptable Temperature Range: 0 - 6 degC

Air and Metal samples Acceptable Range: Ambient

Temperature Measuring device used :

Sample Receipt Checklist	Comments
#1 *Temperature of cooler(s)?	5.5
#2 *Shipping container in good condition?	Yes
#3 *Samples received on ice?	Yes
#4 *Custody Seals intact on shipping container/ cooler?	Yes
#5 Custody Seals intact on sample bottles?	Yes
#6 *Custody Seals Signed and dated?	Yes
#7 *Chain of Custody present?	Yes
#8 Sample instructions complete on Chain of Custody?	Yes
#9 Any missing/extra samples?	No
#10 Chain of Custody signed when relinquished/ received?	Yes
#11 Chain of Custody agrees with sample label(s)?	Yes
#12 Container label(s) legible and intact?	Yes
#13 Sample matrix/ properties agree with Chain of Custody?	Yes
#14 Samples in proper container/ bottle?	Yes
#15 Samples properly preserved?	Yes
#16 Sample container(s) intact?	Yes
#17 Sufficient sample amount for indicated test(s)?	Yes
#18 All samples received within hold time?	Yes
#19 Subcontract of sample(s)?	Yes
#20 VOC samples have zero headspace (less than 1/4 inch bubble)?	Yes
#21 <2 for all samples preserved with HNO3,HCL, H2SO4?	Yes
#22 >10 for all samples preserved with NaAsO2+NaOH, ZnAc+NaOH?	Yes

*** Must be completed for after-hours delivery of samples prior to placing in the refrigerator**

Analyst:	PH Device/Lot#:
----------	-----------------

Checklist completed by:

Date: _____

Checklist reviewed by:

Date: _____

Analytical Report 457374
for
Southern Union Gas Services- Monahans

Project Manager: Joel Lowry

West Eunice Compressor

1RP-2724

13-FEB-13

Collected By: Client



12600 West I-20 East Odessa, Texas 79765

Xenco-Houston (EPA Lab code: TX00122):

Texas (T104704215-10-6-TX), Arizona (AZ0765), Arkansas (08-039-0), Connecticut (PH-0102), Florida (E871002)
Illinois (002082), Indiana (C-TX-02), Iowa (392), Kansas (E-10380), Kentucky (45), Louisiana (03054)
New Hampshire (297408), New Jersey (TX007), New York (11763), Oklahoma (9218), Pennsylvania (68-03610)
Rhode Island (LAO00312), USDA (S-44102), DoD (L11-54)

Xenco-Atlanta (EPA Lab Code: GA00046):

Florida (E87429), North Carolina (483), South Carolina (98015), Kentucky (85), DoD (L10-135)
Louisiana (04176), USDA (P330-07-00105)

Xenco-Tampa Mobile (EPA Lab code: FL01212): Florida (E84900)

Xenco-Lakeland: Florida (E84098)

Xenco-Odessa (EPA Lab code: TX00158): Texas (T104704400-TX)

Xenco-Dallas (EPA Lab code: TX01468): Texas (T104704295-TX)

Xenco Phoenix (EPA Lab Code: AZ00901): Arizona(AZ0757)

Xenco-Phoenix Mobile (EPA Lab code: AZ00901): Arizona (AZM757)

Xenco Tucson (EPA Lab code:AZ000989): Arizona (AZ0758)



13-FEB-13

Project Manager: **Joel Lowry**
Southern Union Gas Services- Monahans
801 South Loop 464
Monahans, TX 79756

Reference: XENCO Report No(s): **457374**
West Eunice Compressor
Project Address: Lea County, NM

Joel Lowry:

We are reporting to you the results of the analyses performed on the samples received under the project name referenced above and identified with the XENCO Report Number(s) 457374. All results being reported under this Report Number apply to the samples analyzed and properly identified with a Laboratory ID number. Subcontracted analyses are identified in this report with either the NELAC certification number of the subcontract lab in the analyst ID field, or the complete subcontracted report attached to this report.

Unless otherwise noted in a Case Narrative, all data reported in this Analytical Report are in compliance with NELAC standards. The uncertainty of measurement associated with the results of analysis reported is available upon request. Should insufficient sample be provided to the laboratory to meet the method and NELAC Matrix Duplicate and Matrix Spike requirements, then the data will be analyzed, evaluated and reported using all other available quality control measures.

The validity and integrity of this report will remain intact as long as it is accompanied by this letter and reproduced in full, unless written approval is granted by XENCO Laboratories. This report will be filed for at least 5 years in our archives after which time it will be destroyed without further notice, unless otherwise arranged with you. The samples received, and described as recorded in Report No. 457374 will be filed for 60 days, and after that time they will be properly disposed without further notice, unless otherwise arranged with you. We reserve the right to return to you any unused samples, extracts or solutions related to them if we consider so necessary (e.g., samples identified as hazardous waste, sample sizes exceeding analytical standard practices, controlled substances under regulated protocols, etc).

We thank you for selecting XENCO Laboratories to serve your analytical needs. If you have any questions concerning this report, please feel free to contact us at any time.

Respectfully,

Nicholas Straccione

Project Manager

Recipient of the Prestigious Small Business Administration Award of Excellence in 1994.

Certified and approved by numerous States and Agencies.

A Small Business and Minority Status Company that delivers SERVICE and QUALITY

Houston - Dallas - Odessa - San Antonio - Tampa - Lakeland - Atlanta - Phoenix - Oklahoma - Latin America



Sample Cross Reference 457374



Southern Union Gas Services- Monahans, Monahans, TX

West Eunice Compressor

Sample Id	Matrix	Date Collected	Sample Depth	Lab Sample Id
SB-14 @ 2'	S	01-31-13 15:35	2 ft	457374-001
SB-14 @ 6'	S	01-31-13 15:55	6 ft	457374-002



CASE NARRATIVE

Client Name: Southern Union Gas Services- Monahans

Project Name: West Eunice Compressor



Project ID: 1RP-2724

Work Order Number(s): 457374

Report Date: 13-FEB-13

Date Received: 02/08/2013

Sample receipt non conformances and comments:

Sample receipt non conformances and comments per sample:

None

Certificate of Analysis Summary 457374

Southern Union Gas Services- Monahans, Monahans, TX



Project Id: IRP-2724

Contact: Joel Lowry

Project Location: Lea County, NM

Project Name: West Eunice Compressor

Date Received in Lab: Fri Feb-08-13 09:45 am

Report Date: 13-FEB-13

Project Manager: Nicholas Straccione

Analysis Requested	Lab Id:	457374-001	457374-002				
	Field Id:	SB-14 @ 2'	SB-14 @ 6'				
	Depth:	2- ft	6- ft				
	Matrix:	SOIL	SOIL				
	Sampled:	Jan-31-13 15:35	Jan-31-13 15:55				
Inorganic Anions by EPA 300/300.1 SUB: TX104704215	Extracted:	Feb-12-13 20:15	Feb-12-13 20:33				
	Analyzed:	Feb-12-13 20:15	Feb-12-13 20:33				
	Units/RL:	mg/kg RL	mg/kg RL				
Chloride		3.53 1.13	55.5 1.09				
Percent Moisture	Extracted:	Feb-11-13 17:00	Feb-11-13 17:00				
	Analyzed:	Feb-11-13 17:00	Feb-11-13 17:00				
	Units/RL:	% RL	% RL				
Percent Moisture		11.7 1.00	8.95 1.00				
TPH By SW8015 Mod	Extracted:	Feb-12-13 11:25	Feb-12-13 11:25				
	Analyzed:	Feb-12-13 16:35	Feb-12-13 17:10				
	Units/RL:	mg/kg RL	mg/kg RL				
C6-C12 Gasoline Range Hydrocarbons		ND 17.0	ND 16.5				
C12-C28 Diesel Range Hydrocarbons		ND 17.0	ND 16.5				
C28-C35 Oil Range Hydrocarbons		ND 17.0	ND 16.5				
Total TPH		ND 17.0	ND 16.5				

This analytical report, and the entire data package it represents, has been made for your exclusive and confidential use. The interpretations and results expressed throughout this analytical report represent the best judgment of XENCO Laboratories. XENCO Laboratories assumes no responsibility and makes no warranty to the end use of the data hereby presented. Our liability is limited to the amount invoiced for this work order unless otherwise agreed to in writing.

Houston - Dallas - San Antonio - Atlanta - Tampa - Boca Raton - Latin America - Odessa - Corpus Christi



Nicholas Straccione
Project Manager

Flagging Criteria

- X** In our quality control review of the data a QC deficiency was observed and flagged as noted. MS/MSD recoveries were found to be outside of the laboratory control limits due to possible matrix /chemical interference, or a concentration of target analyte high enough to affect the recovery of the spike concentration. This condition could also affect the relative percent difference in the MS/MSD.
- B** A target analyte or common laboratory contaminant was identified in the method blank. Its presence indicates possible field or laboratory contamination.
- D** The sample(s) were diluted due to targets detected over the highest point of the calibration curve, or due to matrix interference. Dilution factors are included in the final results. The result is from a diluted sample.
- E** The data exceeds the upper calibration limit; therefore, the concentration is reported as estimated.
- F** RPD exceeded lab control limits.
- J** The target analyte was positively identified below the quantitation limit and above the detection limit.
- U** Analyte was not detected.
- L** The LCS data for this analytical batch was reported below the laboratory control limits for this analyte. The department supervisor and QA Director reviewed data. The samples were either reanalyzed or flagged as estimated concentrations.
- H** The LCS data for this analytical batch was reported above the laboratory control limits. Supporting QC Data were reviewed by the Department Supervisor and QA Director. Data were determined to be valid for reporting.
- K** Sample analyzed outside of recommended hold time.
- JN** A combination of the "N" and the "J" qualifier. The analysis indicates that the analyte is "tentatively identified" and the associated numerical value may not be consistent with the amount actually present in the environmental sample.

* Surrogate recovered outside laboratory control limit.

BRL Below Reporting Limit.

RL Reporting Limit

MDL Method Detection Limit **SDL** Sample Detection Limit **LOD** Limit of Detection

PQL Practical Quantitation Limit **SQL** Method Quantitation Limit **LOQ** Limit of Quantitation

DL Method Detection Limit

NC Non-Calculable

+ NELAC certification not offered for this compound.

* (Next to analyte name or method description) = Outside XENCO's scope of NELAC accreditation

Recipient of the Prestigious Small Business Administration Award of Excellence in 1994.

Certified and approved by numerous States and Agencies.

A Small Business and Minority Status Company that delivers SERVICE and QUALITY

Houston - Dallas - San Antonio - Atlanta - Midland/Odessa - Tampa/Lakeland - Phoenix - Latin America

4143 Greenbriar Dr, Stafford, TX 77477
 9701 Harry Hines Blvd, Dallas, TX 75220
 5332 Blackberry Drive, San Antonio TX 78238
 2505 North Falkenburg Rd, Tampa, FL 33619
 12600 West I-20 East, Odessa, TX 79765
 6017 Financial Drive, Norcross, GA 30071
 3725 E. Atlanta Ave, Phoenix, AZ 85040

Phone	Fax
(281) 240-4200	(281) 240-4280
(214) 902 0300	(214) 351-9139
(210) 509-3334	(210) 509-3335
(813) 620-2000	(813) 620-2033
(432) 563-1800	(432) 563-1713
(770) 449-8800	(770) 449-5477
(602) 437-0330	

Form 2 - Surrogate Recoveries

Project Name: West Eunice Compressor

Work Orders : 457374,

Project ID: 1RP-2724

Lab Batch #: 906817

Sample: 457374-001 / SMP

Batch: 1 Matrix: Soil

Units: mg/kg

Date Analyzed: 02/12/13 16:35

SURROGATE RECOVERY STUDY

TPH By SW8015 Mod Analytes	Amount Found [A]	True Amount [B]	Recovery %R [D]	Control Limits %R	Flags
1-Chlorooctane	107	99.8	107	70-135	
o-Terphenyl	55.5	49.9	111	70-135	

Lab Batch #: 906817

Sample: 457374-002 / SMP

Batch: 1 Matrix: Soil

Units: mg/kg

Date Analyzed: 02/12/13 17:10

SURROGATE RECOVERY STUDY

TPH By SW8015 Mod Analytes	Amount Found [A]	True Amount [B]	Recovery %R [D]	Control Limits %R	Flags
1-Chlorooctane	89.4	100	89	70-135	
o-Terphenyl	45.6	50.0	91	70-135	

Lab Batch #: 906817

Sample: 633729-1-BLK / BLK

Batch: 1 Matrix: Solid

Units: mg/kg

Date Analyzed: 02/12/13 14:58

SURROGATE RECOVERY STUDY

TPH By SW8015 Mod Analytes	Amount Found [A]	True Amount [B]	Recovery %R [D]	Control Limits %R	Flags
1-Chlorooctane	106	100	106	70-135	
o-Terphenyl	54.1	50.1	108	70-135	

Lab Batch #: 906817

Sample: 633729-1-BKS / BKS

Batch: 1 Matrix: Solid

Units: mg/kg

Date Analyzed: 02/12/13 13:46

SURROGATE RECOVERY STUDY

TPH By SW8015 Mod Analytes	Amount Found [A]	True Amount [B]	Recovery %R [D]	Control Limits %R	Flags
1-Chlorooctane	117	99.7	117	70-135	
o-Terphenyl	46.2	49.9	93	70-135	

Lab Batch #: 906817

Sample: 633729-1-BSD / BSD

Batch: 1 Matrix: Solid

Units: mg/kg

Date Analyzed: 02/12/13 14:18

SURROGATE RECOVERY STUDY

TPH By SW8015 Mod Analytes	Amount Found [A]	True Amount [B]	Recovery %R [D]	Control Limits %R	Flags
1-Chlorooctane	123	100	123	70-135	
o-Terphenyl	52.0	50.0	104	70-135	

* Surrogate outside of Laboratory QC limits

** Surrogates outside limits; data and surrogates confirmed by reanalysis

*** Poor recoveries due to dilution

Surrogate Recovery [D] = $100 * A / B$

All results are based on MDL and validated for QC purposes.



Form 2 - Surrogate Recoveries

Project Name: West Eunice Compressor

Work Orders : 457374,

Project ID: 1RP-2724

Lab Batch #: 906817

Sample: 457374-001 S / MS

Batch: 1 Matrix: Soil

Units: mg/kg

Date Analyzed: 02/12/13 19:50

SURROGATE RECOVERY STUDY

TPH By SW8015 Mod Analytes	Amount Found [A]	True Amount [B]	Recovery %R [D]	Control Limits %R	Flags
1-Chlorooctane	119	99.8	119	70-135	
o-Terphenyl	52.2	49.9	105	70-135	

Lab Batch #: 906817

Sample: 457374-001 SD / MSD

Batch: 1 Matrix: Soil

Units: mg/kg

Date Analyzed: 02/12/13 20:22

SURROGATE RECOVERY STUDY

TPH By SW8015 Mod Analytes	Amount Found [A]	True Amount [B]	Recovery %R [D]	Control Limits %R	Flags
1-Chlorooctane	119	100	119	70-135	
o-Terphenyl	51.6	50.1	103	70-135	

* Surrogate outside of Laboratory QC limits

** Surrogates outside limits; data and surrogates confirmed by reanalysis

*** Poor recoveries due to dilution

Surrogate Recovery [D] = $100 * A / B$

All results are based on MDL and validated for QC purposes.

Project Name: West Eunice Compressor

Work Order #: 457374

Project ID:

1RP-2724

Lab Batch #: 906818

Sample: 633730-1-BKS

Matrix: Solid

Date Analyzed: 02/12/2013

Date Prepared: 02/12/2013

Analyst: RKO

Reporting Units: mg/kg

Batch #: 1

BLANK /BLANK SPIKE RECOVERY STUDY

Inorganic Anions by EPA 300/300.1 Analytes	Blank Result [A]	Spike Added [B]	Blank Spike Result [C]	Blank Spike %R [D]	Control Limits %R	Flags
Chloride	<1.00	100	105	105	80-120	

Blank Spike Recovery [D] = $100 * [C] / [B]$

All results are based on MDL and validated for QC purposes.

BRL - Below Reporting Limit

Project Name: West Eunice Compressor

Work Order #: 457374

Analyst: KEB

Date Prepared: 02/12/2013

Project ID: 1RP-2724

Date Analyzed: 02/12/2013

Lab Batch ID: 906817

Sample: 633729-1-BKS

Batch #: 1

Matrix: Solid

Units: mg/kg

BLANK /BLANK SPIKE / BLANK SPIKE DUPLICATE RECOVERY STUDY

TPH By SW8015 Mod	Blank Sample Result [A]	Spike Added [B]	Blank Spike Result [C]	Blank Spike %R [D]	Spike Added [E]	Blank Spike Duplicate Result [F]	Blk. Spk Dup. %R [G]	RPD %	Control Limits %R	Control Limits %RPD	Flag
Analytes											
C6-C12 Gasoline Range Hydrocarbons	<15.0	997	1040	104	1000	1090	109	5	70-135	35	
C12-C28 Diesel Range Hydrocarbons	<15.0	997	1090	109	1000	1120	112	3	70-135	35	

Relative Percent Difference RPD = $200 * |(C-F)/(C+F)|$

Blank Spike Recovery [D] = $100 * (C)/[B]$

Blank Spike Duplicate Recovery [G] = $100 * (F)/[E]$

All results are based on MDL and Validated for QC Purposes



Form 3 - MS / MSD Recoveries



Project Name: West Eunice Compressor

Work Order # : 457374

Project ID: 1RP-2724

Lab Batch ID: 906817

QC- Sample ID: 457374-001 S

Batch #: 1 **Matrix:** Soil

Date Analyzed: 02/12/2013

Date Prepared: 02/12/2013

Analyst: KEB

Reporting Units: mg/kg

MATRIX SPIKE / MATRIX SPIKE DUPLICATE RECOVERY STUDY											
TPH By SW8015 Mod Analytes	Parent Sample Result [A]	Spike Added [B]	Spiked Sample Result [C]	Spiked Sample %R [D]	Spike Added [E]	Duplicate Spiked Sample Result [F]	Spiked Dup. %R [G]	RPD %	Control Limits %R	Control Limits %RPD	Flag
C6-C12 Gasoline Range Hydrocarbons	<15.0	998	1040	104	1000	1020	102	2	70-135	35	
C12-C28 Diesel Range Hydrocarbons	<15.0	998	1070	107	1000	1040	104	3	70-135	35	

Matrix Spike Percent Recovery $[D] = 100 * (C - A) / B$
Relative Percent Difference $RPD = 200 * |(C - F) / (C + F)|$

Matrix Spike Duplicate Percent Recovery $[G] = 100 * (F - A) / E$

ND = Not Detected, J = Present Below Reporting Limit, B = Present in Blank, NR = Not Requested, I = Interference, NA = Not

ApplicableN = See Narrative, EQL = Estimated Quantitation Limit

CHAIN OF CUSTODY RECORD AND ANALYSIS REQUEST

**12600 West I-20 East
Odessa, Texas 79765**

Phone: 432-563-1800
Fax: 432-563-1713

Project Manager: Joel Lowry

Project Name: West Eunice Compressor

Company Name Basin Environmental Service Technologies, LLC

Project #: (1RP-2724)

Company Address: P.O. Box 301

Project Loc: Lea County, NM

City/State/Zip: Lovington, NM 88260

PO #: Bill Southern Union Gas

Telephone No: (575)396-2378

Fax No: **(575) 396-1429**

Report Format: ☒ Standard ☐ TRRP ☐ NPDES

Sampler Signature: Neil Town

e-mail: pm@basinenv.com, cyndi.inskeep@sug.com, rose.slade@sug.com

[illegible]



Prelogin/Nonconformance Report- Sample Log-In

Client: Southern Union Gas Services- Monahan

Date/ Time Received: 02/08/2013 09:45:00 AM

Work Order #: 457374

Acceptable Temperature Range: 0 - 6 degC

Air and Metal samples Acceptable Range: Ambient

Temperature Measuring device used :

Sample Receipt Checklist	Comments
#1 *Temperature of cooler(s)?	4
#2 *Shipping container in good condition?	Yes
#3 *Samples received on ice?	Yes
#4 *Custody Seals intact on shipping container/ cooler?	Yes
#5 Custody Seals intact on sample bottles?	Yes
#6 *Custody Seals Signed and dated?	Yes
#7 *Chain of Custody present?	Yes
#8 Sample instructions complete on Chain of Custody?	Yes
#9 Any missing/extra samples?	No
#10 Chain of Custody signed when relinquished/ received?	Yes
#11 Chain of Custody agrees with sample label(s)?	Yes
#12 Container label(s) legible and intact?	Yes
#13 Sample matrix/ properties agree with Chain of Custody?	Yes
#14 Samples in proper container/ bottle?	Yes
#15 Samples properly preserved?	Yes
#16 Sample container(s) intact?	Yes
#17 Sufficient sample amount for indicated test(s)?	Yes
#18 All samples received within hold time?	Yes
#19 Subcontract of sample(s)?	Yes
#20 VOC samples have zero headspace (less than 1/4 inch bubble)?	Yes
#21 <2 for all samples preserved with HNO3,HCL, H2SO4?	Yes
#22 >10 for all samples preserved with NaAsO2+NaOH, ZnAc+NaOH?	Yes

*** Must be completed for after-hours delivery of samples prior to placing in the refrigerator**

Analyst:	PH Device/Lot#:
----------	-----------------

Checklist completed by: _____

Date: 02/11/2013

Checklist reviewed by:

Alejandro Montoya

Alejandro Montoya

Date: 02/11/2013

Analytical Report 459012
for
Southern Union Gas Services- Monahans

Project Manager: Joel Lowry

West Eunice Compressor

(1RP-2724)

14-MAR-13

Collected By: Client



12600 West I-20 East Odessa, Texas 79765

Xenco-Houston (EPA Lab code: TX00122):

Texas (T104704215-10-6-TX), Arizona (AZ0765), Arkansas (08-039-0), Connecticut (PH-0102), Florida (E871002)
Illinois (002082), Indiana (C-TX-02), Iowa (392), Kansas (E-10380), Kentucky (45), Louisiana (03054)
New Hampshire (297408), New Jersey (TX007), New York (11763), Oklahoma (9218), Pennsylvania (68-03610)
Rhode Island (LAO00312), USDA (S-44102), DoD (L11-54)

Xenco-Atlanta (EPA Lab Code: GA00046):

Florida (E87429), North Carolina (483), South Carolina (98015), Kentucky (85), DoD (L10-135)
Louisiana (04176), USDA (P330-07-00105)

Xenco-Tampa Mobile (EPA Lab code: FL01212): Florida (E84900)

Xenco-Lakeland: Florida (E84098)

Xenco-Odessa (EPA Lab code: TX00158): Texas (T104704400-TX)

Xenco-Dallas (EPA Lab code: TX01468): Texas (T104704295-TX)

Xenco Phoenix (EPA Lab Code: AZ00901): Arizona (AZ0757)

Xenco-Phoenix Mobile (EPA Lab code: AZ00901): Arizona (AZM757)

Xenco Tucson (EPA Lab code: AZ000989): Arizona (AZ0758)



14-MAR-13

Project Manager: **Joel Lowry**
Southern Union Gas Services- Monahans
801 South Loop 464
Monahans, TX 79756

Reference: XENCO Report No(s): **459012**
West Eunice Compressor
Project Address: Lea County, NM

Joel Lowry:

We are reporting to you the results of the analyses performed on the samples received under the project name referenced above and identified with the XENCO Report Number(s) 459012. All results being reported under this Report Number apply to the samples analyzed and properly identified with a Laboratory ID number. Subcontracted analyses are identified in this report with either the NELAC certification number of the subcontract lab in the analyst ID field, or the complete subcontracted report attached to this report.

Unless otherwise noted in a Case Narrative, all data reported in this Analytical Report are in compliance with NELAC standards. The uncertainty of measurement associated with the results of analysis reported is available upon request. Should insufficient sample be provided to the laboratory to meet the method and NELAC Matrix Duplicate and Matrix Spike requirements, then the data will be analyzed, evaluated and reported using all other available quality control measures.

The validity and integrity of this report will remain intact as long as it is accompanied by this letter and reproduced in full, unless written approval is granted by XENCO Laboratories. This report will be filed for at least 5 years in our archives after which time it will be destroyed without further notice, unless otherwise arranged with you. The samples received, and described as recorded in Report No. 459012 will be filed for 60 days, and after that time they will be properly disposed without further notice, unless otherwise arranged with you. We reserve the right to return to you any unused samples, extracts or solutions related to them if we consider so necessary (e.g., samples identified as hazardous waste, sample sizes exceeding analytical standard practices, controlled substances under regulated protocols, etc).

We thank you for selecting XENCO Laboratories to serve your analytical needs. If you have any questions concerning this report, please feel free to contact us at any time.

Respectfully,

Nicholas Straccione

Project Manager

Recipient of the Prestigious Small Business Administration Award of Excellence in 1994.

Certified and approved by numerous States and Agencies.

A Small Business and Minority Status Company that delivers SERVICE and QUALITY

Houston - Dallas - Odessa - San Antonio - Tampa - Lakeland - Atlanta - Phoenix - Oklahoma - Latin America



Sample Cross Reference 459012



Southern Union Gas Services- Monahans, Monahans, TX

West Eunice Compressor

Sample Id	Matrix	Date Collected	Sample Depth	Lab Sample Id
SB-14a	S	03-08-13 15:00		459012-001



CASE NARRATIVE

Client Name: Southern Union Gas Services- Monahans

Project Name: West Eunice Compressor



Project ID: (IRP-2724)

Work Order Number(s): 459012

Report Date: 14-MAR-13

Date Received: 03/08/2013

Sample receipt non conformances and comments:

None

Sample receipt non conformances and comments per sample:

None



Certificate of Analysis Summary 459012

Southern Union Gas Services- Monahans, Monahans, TX



Project Id: (IRP-2724)

Contact: Joel Lowry

Project Location: Lea County, NM

Project Name: West Eunice Compressor

Date Received in Lab: Fri Mar-08-13 03:32 pm

Report Date: 14-MAR-13

Project Manager: Nicholas Straccione

Analysis Requested	Lab Id: 459012-001 Field Id: SB-14a Depth: Matrix: SOIL Sampled: Mar-08-13 15:00					
BTEX by EPA 8021B	Extracted: Mar-13-13 15:30 Analyzed: Mar-13-13 22:39 Units/RL: mg/kg RL					
Benzene	ND 0.00101					
Toluene	ND 0.00201					
Ethylbenzene	ND 0.00101					
m_p-Xylenes	ND 0.00201					
o-Xylene	ND 0.00101					
Total Xylenes	ND 0.00101					
Total BTEX	ND 0.00101					
Percent Moisture	Extracted: Analyzed: Mar-12-13 11:35 Units/RL: % RL					
Percent Moisture	ND 1.00					

This analytical report, and the entire data package it represents, has been made for your exclusive and confidential use. The interpretations and results expressed throughout this analytical report represent the best judgment of XENCO Laboratories. XENCO Laboratories assumes no responsibility and makes no warranty to the end use of the data hereby presented. Our liability is limited to the amount invoiced for this work order unless otherwise agreed to in writing.

Houston - Dallas - San Antonio - Atlanta - Tampa - Boca Raton - Latin America - Odessa - Corpus Christi

Nicholas Straccione
Project Manager

Flagging Criteria

- X** In our quality control review of the data a QC deficiency was observed and flagged as noted. MS/MSD recoveries were found to be outside of the laboratory control limits due to possible matrix /chemical interference, or a concentration of target analyte high enough to affect the recovery of the spike concentration. This condition could also affect the relative percent difference in the MS/MSD.
- B** A target analyte or common laboratory contaminant was identified in the method blank. Its presence indicates possible field or laboratory contamination.
- D** The sample(s) were diluted due to targets detected over the highest point of the calibration curve, or due to matrix interference. Dilution factors are included in the final results. The result is from a diluted sample.
- E** The data exceeds the upper calibration limit; therefore, the concentration is reported as estimated.
- F** RPD exceeded lab control limits.
- J** The target analyte was positively identified below the quantitation limit and above the detection limit.
- U** Analyte was not detected.
- L** The LCS data for this analytical batch was reported below the laboratory control limits for this analyte. The department supervisor and QA Director reviewed data. The samples were either reanalyzed or flagged as estimated concentrations.
- H** The LCS data for this analytical batch was reported above the laboratory control limits. Supporting QC Data were reviewed by the Department Supervisor and QA Director. Data were determined to be valid for reporting.
- K** Sample analyzed outside of recommended hold time.
- JN** A combination of the "N" and the "J" qualifier. The analysis indicates that the analyte is "tentatively identified" and the associated numerical value may not be consistent with the amount actually present in the environmental sample.

* Surrogate recovered outside laboratory control limit.

BRL Below Reporting Limit.

RL Reporting Limit

MDL Method Detection Limit **SDL** Sample Detection Limit **LOD** Limit of Detection

PQL Practical Quantitation Limit **SQL** Method Quantitation Limit **LOQ** Limit of Quantitation

DL Method Detection Limit

NC Non-Calculable

+ NELAC certification not offered for this compound.

* (Next to analyte name or method description) = Outside XENCO's scope of NELAC accreditation

Recipient of the Prestigious Small Business Administration Award of Excellence in 1994.

Certified and approved by numerous States and Agencies.

A Small Business and Minority Status Company that delivers SERVICE and QUALITY

Houston - Dallas - San Antonio - Atlanta - Midland/Odessa - Tampa/Lakeland - Phoenix - Latin America

4143 Greenbriar Dr, Stafford, TX 77477
 9701 Harry Hines Blvd, Dallas, TX 75220
 5332 Blackberry Drive, San Antonio TX 78238
 2505 North Falkenburg Rd, Tampa, FL 33619
 12600 West I-20 East, Odessa, TX 79765
 6017 Financial Drive, Norcross, GA 30071
 3725 E. Atlanta Ave, Phoenix, AZ 85040

Phone	Fax
(281) 240-4200	(281) 240-4280
(214) 902 0300	(214) 351-9139
(210) 509-3334	(210) 509-3335
(813) 620-2000	(813) 620-2033
(432) 563-1800	(432) 563-1713
(770) 449-8800	(770) 449-5477
(602) 437-0330	

Form 2 - Surrogate Recoveries

Project Name: West Eunice Compressor

Work Orders : 459012,

Project ID: (1RP-2724)

Lab Batch #: 908965

Sample: 459012-001 / SMP

Batch: 1 Matrix: Soil

Units: mg/kg Date Analyzed: 03/13/13 22:39		SURROGATE RECOVERY STUDY			
BTEX by EPA 8021B		Amount Found [A]	True Amount [B]	Recovery %R [D]	Control Limits %R
Analytes					
1,4-Difluorobenzene		0.0328	0.0300	109	80-120
4-Bromofluorobenzene		0.0267	0.0300	89	80-120

Lab Batch #: 908965

Sample: 635091-1-BLK / BLK

Batch: 1 Matrix: Solid

Units: mg/kg Date Analyzed: 03/13/13 22:23		SURROGATE RECOVERY STUDY			
BTEX by EPA 8021B		Amount Found [A]	True Amount [B]	Recovery %R [D]	Control Limits %R
Analytes					
1,4-Difluorobenzene		0.0321	0.0300	107	80-120
4-Bromofluorobenzene		0.0292	0.0300	97	80-120

Lab Batch #: 908965

Sample: 635091-1-BKS / BKS

Batch: 1 Matrix: Solid

Units: mg/kg Date Analyzed: 03/13/13 21:51		SURROGATE RECOVERY STUDY			
BTEX by EPA 8021B		Amount Found [A]	True Amount [B]	Recovery %R [D]	Control Limits %R
Analytes					
1,4-Difluorobenzene		0.0301	0.0300	100	80-120
4-Bromofluorobenzene		0.0299	0.0300	100	80-120

Lab Batch #: 908965

Sample: 635091-1-BSD / BSD

Batch: 1 Matrix: Solid

Units: mg/kg Date Analyzed: 03/13/13 22:07		SURROGATE RECOVERY STUDY			
BTEX by EPA 8021B		Amount Found [A]	True Amount [B]	Recovery %R [D]	Control Limits %R
Analytes					
1,4-Difluorobenzene		0.0324	0.0300	108	80-120
4-Bromofluorobenzene		0.0314	0.0300	105	80-120

Lab Batch #: 908965

Sample: 459027-001 S / MS

Batch: 1 Matrix: Soil

Units: mg/kg Date Analyzed: 03/14/13 02:59		SURROGATE RECOVERY STUDY			
BTEX by EPA 8021B		Amount Found [A]	True Amount [B]	Recovery %R [D]	Control Limits %R
Analytes					
1,4-Difluorobenzene		0.0350	0.0300	117	80-120
4-Bromofluorobenzene		0.0321	0.0300	107	80-120

* Surrogate outside of Laboratory QC limits

** Surrogates outside limits; data and surrogates confirmed by reanalysis

*** Poor recoveries due to dilution

Surrogate Recovery [D] = $100 * A / B$

All results are based on MDL and validated for QC purposes.



Form 2 - Surrogate Recoveries

Project Name: West Eunice Compressor

Work Orders : 459012,

Project ID: (1RP-2724)

Lab Batch #: 908965

Sample: 459027-001 SD / MSD

Batch: 1 Matrix: Soil

Units: mg/kg

Date Analyzed: 03/14/13 03:16

SURROGATE RECOVERY STUDY

BTEX by EPA 8021B Analytes	Amount Found [A]	True Amount [B]	Recovery %R [D]	Control Limits %R	Flags
1,4-Difluorobenzene	0.0312	0.0300	104	80-120	
4-Bromofluorobenzene	0.0345	0.0300	115	80-120	

* Surrogate outside of Laboratory QC limits

** Surrogates outside limits; data and surrogates confirmed by reanalysis

*** Poor recoveries due to dilution

Surrogate Recovery [D] = $100 * A / B$

All results are based on MDL and validated for QC purposes.

Project Name: West Eunice Compressor

Work Order #: 459012

Analyst: KEB

Date Prepared: 03/13/2013

Project ID: (1RP-2724)

Date Analyzed: 03/13/2013

Lab Batch ID: 908965

Sample: 635091-1-BKS

Batch #: 1

Matrix: Solid

Units: mg/kg

BLANK /BLANK SPIKE / BLANK SPIKE DUPLICATE RECOVERY STUDY

BTEX by EPA 8021B Analytes	Blank Sample Result [A]	Spike Added [B]	Blank Spike Result [C]	Blank Spike %R [D]	Spike Added [E]	Blank Spike Duplicate Result [F]	Blk. Spk Dup. %R [G]	RPD %	Control Limits %R	Control Limits %RPD	Flag
Benzene	<0.000992	0.0992	0.0854	86	0.0998	0.0835	84	2	70-130	35	
Toluene	<0.00198	0.0992	0.0854	86	0.0998	0.0781	78	9	70-130	35	
Ethylbenzene	<0.000992	0.0992	0.0793	80	0.0998	0.0783	78	1	71-129	35	
m_p-Xylenes	<0.00198	0.198	0.152	77	0.200	0.146	73	4	70-135	35	
o-Xylene	<0.000992	0.0992	0.0811	82	0.0998	0.0759	76	7	71-133	35	

Relative Percent Difference RPD = $200 * |(C-F)/(C+F)|$

Blank Spike Recovery [D] = $100 * (C)/[B]$

Blank Spike Duplicate Recovery [G] = $100 * (F)/[E]$

All results are based on MDL and Validated for QC Purposes



Form 3 - MS / MSD Recoveries



Project Name: West Eunice Compressor

Work Order # : 459012

Project ID: (IRP-2724)

Lab Batch ID: 908965

QC- Sample ID: 459027-001 S

Batch #: 1 Matrix: Soil

Date Analyzed: 03/14/2013

Date Prepared: 03/13/2013

Analyst: KEB

Reporting Units: mg/kg

MATRIX SPIKE / MATRIX SPIKE DUPLICATE RECOVERY STUDY

BTEX by EPA 8021B Analytes	Parent Sample Result [A]	Spike Added [B]	Spiked Sample Result [C]	Spiked Sample %R [D]	Spike Added [E]	Duplicate Spiked Sample Result [F]	Spiked Dup. %R [G]	RPD %	Control Limits %R	Control Limits %RPD	Flag
Benzene	<0.00106	0.106	0.0882	83	0.106	0.0966	91	9	70-130	35	
Toluene	<0.00212	0.106	0.0797	75	0.106	0.0819	77	3	70-130	35	
Ethylbenzene	<0.00106	0.106	0.0785	74	0.106	0.0844	80	7	71-129	35	
m_p-Xylenes	<0.00212	0.212	0.149	70	0.213	0.157	74	5	70-135	35	
o-Xylene	<0.00106	0.106	0.0788	74	0.106	0.0829	78	5	71-133	35	

Matrix Spike Percent Recovery $[D] = 100 * (C - A) / B$
Relative Percent Difference $RPD = 200 * (C - F) / (C + F)$

Matrix Spike Duplicate Percent Recovery $[G] = 100 * (F - A) / E$

ND = Not Detected, J = Present Below Reporting Limit, B = Present in Blank, NR = Not Requested, I = Interference, NA = Not

ApplicableN = See Narrative, EQL = Estimated Quantitation Limit

Project Name: West Eunice Compressor

Work Order #: 459012

Lab Batch #: 908810

Project ID: (1RP-2724)

Date Analyzed: 03/12/2013 11:35

Date Prepared: 03/12/2013

Analyst: WRU

QC- Sample ID: 459012-001 D

Batch #: 1

Matrix: Soil

Reporting Units: %

SAMPLE / SAMPLE DUPLICATE RECOVERY

Percent Moisture	Parent Sample Result [A]	Sample Duplicate Result [B]	RPD	Control Limits %RPD	Flag
Analyte					
Percent Moisture	<1.00	<1.00	0	20	U

Spike Relative Difference RPD $200 * |(B-A)/(B+A)|$
 All Results are based on MDL and validated for QC purposes.
 BRL - Below Reporting Limit



Prelogin/Nonconformance Report- Sample Log-In

Client: Southern Union Gas Services- Monahan

Date/ Time Received: 03/08/2013 03:32:00 PM

Work Order #: 459012

Acceptable Temperature Range: 0 - 6 degC

Air and Metal samples Acceptable Range: Ambient

Temperature Measuring device used :

Sample Receipt Checklist

Comments

#1 *Temperature of cooler(s)?	5
#2 *Shipping container in good condition?	Yes
#3 *Samples received on ice?	Yes
#4 *Custody Seals intact on shipping container/ cooler?	Yes
#5 Custody Seals intact on sample bottles?	Yes
#6 *Custody Seals Signed and dated?	Yes
#7 *Chain of Custody present?	Yes
#8 Sample instructions complete on Chain of Custody?	Yes
#9 Any missing/extra samples?	No
#10 Chain of Custody signed when relinquished/ received?	Yes
#11 Chain of Custody agrees with sample label(s)?	Yes
#12 Container label(s) legible and intact?	Yes
#13 Sample matrix/ properties agree with Chain of Custody?	Yes
#14 Samples in proper container/ bottle?	Yes
#15 Samples properly preserved?	Yes
#16 Sample container(s) intact?	Yes
#17 Sufficient sample amount for indicated test(s)?	Yes
#18 All samples received within hold time?	Yes
#19 Subcontract of sample(s)?	Yes
#20 VOC samples have zero headspace (less than 1/4 inch bubble)?	Yes
#21 <2 for all samples preserved with HNO3,HCL, H2SO4?	Yes
#22 >10 for all samples preserved with NaAsO2+NaOH, ZnAc+NaOH?	Yes

*** Must be completed for after-hours delivery of samples prior to placing in the refrigerator**

Analyst:	PH Device/Lot#:
----------	-----------------

Checklist completed by: _____

Date: _____

Checklist reviewed by: _____

Date: _____

District I
1625 N. French Dr., Hobbs, NM 88240
District II
1301 W. Grand Avenue, Artesia, NM 88210
District III
1000 Rio Brazos Road, Aztec, NM 87410
District IV
1220 S. St. Francis Dr., Santa Fe, NM 87505

State of New Mexico
Energy Minerals and Natural Resources

Oil Conservation Division
1220 South St. Francis Dr.
Santa Fe, NM 87505

HOBBS OCD

JUL 18 2011

RECEIVED

Form C-14
Revised October 10, 200

Submit 2 Copies to appropriate
District Office in accordance
with Rule 116 on back
side of form

Release Notification and Corrective Action

OPERATOR

☒ Initial Report ☐ Final Report

Name of Company	Southern Union Gas Services	Contact	Curt Stanley
Address	801 South Loop 464, Monahans, TX 79756	Telephone No.	432-940-5147
Facility Name	West Eunice Compressor Station	Facility Type	Natural Gas Pipeline
Surface Owner	Southern Union Gas Services	Mineral Owner	
			API No 30-025-28822

LOCATION OF RELEASE

Unit Letter	Section	Township	Range	Feet from the	North/South Line	Feet from the	East/West Line	County
P	36	21S	36E					Lea

Latitude 32 degrees 25' 45.29" Longitude 103 degrees 12' 38.84"

NATURE OF RELEASE

Type of Release	Lubricating Oil and Wash Water	Volume of Release	12 BBLs	Volume Recovered	9.5 BBLs
Source of Release	Sump Tank	Date and Hour of Occurrence	June 12, 2011 - 0200 hours	Date and Hour of Discovery	July 13, 2011 - 1000 hours
Was Immediate Notice Given?	<input type="checkbox"/> Yes <input type="checkbox"/> No <input checked="" type="checkbox"/> Not Required	If YES, To Whom?	NA		
By Whom?	NA	Date and Hour	NA		
Was a Watercourse Reached?	<input type="checkbox"/> Yes <input checked="" type="checkbox"/> No	If YES, Volume Impacting the Watercourse.			
If a Watercourse was Impacted, Describe Fully.*					

Describe Cause of Problem and Remedial Action Taken.*

An overhead bulk lubricating oil tank valve was left open, which resulted in the overfilling of a tank located on the compressor unit. The oil flowed into the compressor unit curbing and into the north sump tank. A pump located on the sump, which should activate and transfer the contents of the sump to the wastewater tank, failed. Due to the failure of the sump pump, the sump overfilled and allowed a mixture of approximately 12 barrels of oil and wash water to impact the ground. A vacuum truck was utilized to recover approximately 9.5 barrels.

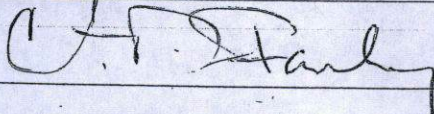
Describe Area Affected and Cleanup Action Taken.*

An area measuring approximately 15 feet in width and 150 feet in length was affected by the release. A backhoe was utilized to scrape up the heavily saturated soil. In sensitive areas of the facility, the saturated soil was "hand dug". Following initial excavation activities the impacted soil was transport to Sundance for disposal.

I hereby certify that the information given above is true and complete to the best of my knowledge and understand that pursuant to NMOCD rules and regulations all operators are required to report and/or file certain release notifications and perform corrective actions for releases which may endanger public health or the environment. The acceptance of a C-141 report by the NMOCD marked as "Final Report" does not relieve the operator of liability should their operations have failed to adequately investigate and remediate contamination that pose a threat to ground water, surface water, human health or the environment. In addition, NMOCD acceptance of a C-141 report does not relieve the operator of responsibility for compliance with any other federal, state, or local laws and/or regulations.

OIL CONSERVATION DIVISION

Signature:



Printed Name: Curt Stanley

Title: EHS Compliance Specialist

E-mail Address: curt.stanley@sug.com

Date: July 18, 2011

Phone: 575-390-7595

ENV ENCLINER:
Approved by District Supervisor:

Approval Date: 07/18/11

Expiration Date: 09/18/11

Conditions of Approval: SUBMIT FINAL
C-141 BY 09/18/11

Attached ☐

IRP-07-11-2724

* Attach Additional Sheets If Necessary

District I
1625 N. French Dr., Hobbs, NM 88240
District II
1301 W. Grand Avenue, Artesia, NM 88210
District III
1000 Rio Brazos Road, Aztec, NM 87410
District IV
1220 S. St. Francis Dr., Santa Fe, NM 87505

State of New Mexico
Energy Minerals and Natural Resources

Oil Conservation Division
1220 South St. Francis Dr.
Santa Fe, NM 87505

Form C-141
Revised October 10, 2003

Submit 2 Copies to appropriate
District Office in accordance
with Rule 116 on back
side of form

Release Notification and Corrective Action

OPERATOR

Initial Report ☐ Final Report ☒

Name of Company	Southern Union Gas Services, Ltd.	Contact	Crystal Callaway
Address	801 S. Loop 464, Monahans, TX, 79756	Telephone No.	817-302-9407
Facility Name:	West Eunice Compressor Station (RP-2724)	Facility Type	Natural Gas Gathering
Surface Owner	Southern Union Gas Services	Mineral Owner:	API No 30-025-28822

LOCATION OF RELEASE

Unit Letter	Section	Township	Range	Feet from the	North/South Line	Feet from the	East/West Line	County
P	36	21S	36E					Lea

Latitude 32 degrees 25' 45.29" Longitude 103 degrees 12' 38.84"

NATURE OF RELEASE

Type of Release:	Lubricating Oil and Wash Water	Volume of Release	12 BBLS	Volume Recovered	9.5 BBLS
Source of Release:	Sump Tank	Date and Hour of Occurrence	June 12, 2011 -0200 hours	Date and Hour of Discovery	July 13, 2011 - 1000 hours
Was Immediate Notice Given?	<input type="checkbox"/> Yes <input type="checkbox"/> No <input checked="" type="checkbox"/> Not Required	If YES, To Whom?	NA		
By Whom?	NA	Date and Hour:	NA		
Was a Watercourse Reached?	<input type="checkbox"/> Yes <input checked="" type="checkbox"/> No	If YES, Volume Impacting the Watercourse.			

If a Watercourse was Impacted, Describe Fully.*

Describe Cause of Problem and Remedial Action Taken:

An overhead bulk lubricating oil tank valve was left open, which resulted in the overfilling of a tank located on the compressor unit. The oil flowed into the compressor unit curbing and into the north sump tank. A pump located on the sump, which should activate and transfer the contents of the sump to the wastewater tank, failed. Due to the failure of the sump pump, the sump overfilled and allowed a mixture of approximately 12 barrels of oil and wash water to impact the ground. A vacuum truck was utilized to recover approximately 9.5 barrels.

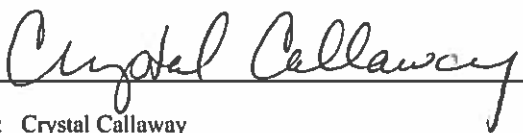
Describe Area Affected and Cleanup Action Taken.*

An area measuring approximately 15 feet in width and 150 feet in length was affected by the release. A backhoe was utilized to scrape up the heavily saturated soil. In sensitive areas of the facility, the saturated soil was "hand dug". Following initial excavation activities the impacted soil was transported to Sundance for disposal.

Confirmation soil samples collected from the West Eunice Compressor Historical Remediation site indicate concentrations of BTEX, TPH and chloride are less than NMOCD Regulatory Standards.

Please reference the attached Basin Environmental Services Technologies Remediation Summary and Site Closure Request for details of remediation activities.

I hereby certify that the information given above is true and complete to the best of my knowledge and understand that pursuant to NMOCD rules and regulations all operators are required to report and/or file certain release notifications and perform corrective actions for releases, which may endanger public health or the environment. The acceptance of a C-141 report by the NMOCD marked as "Final Report" does not relieve the operator of liability should their operations have failed to adequately investigate and remediate contamination that pose a threat to ground water, surface water, human health or the environment. In addition, NMOCD acceptance of a C-141 report does not relieve the operator of responsibility for compliance with any other federal, state, or local laws and/or regulations.

Signature: 	<u>OIL CONSERVATION DIVISION</u>	
Printed Name: Crystal Callaway	Approved by District Supervisor:	
Title: Senior Environmental Remediation Specialist	Approval Date:	Expiration Date:
E-mail Address: Crystal.Callaway@Regencygas.com	Conditions of Approval:	
Date: 10/13/2014	Phone: 817-302-9407	