

Basin Environmental Service Technologies, LLC

3100 Plains Highway
P. O. Box 301
Lovington, New Mexico 88260

jwlowry@basinenv.com

Office: (575) 396-2378

Fax: (575) 396-1429



REMEDIATION SUMMARY & RISK-BASED SITE CLOSURE REQUEST

**SOUTHERN UNION GAS SERVICES
WANTZ COMPRESSOR STATION (1RP-1128)
HISTORICAL RELEASE SITE
Lea County, New Mexico
Unit Letter "M" (SW/SW), Section 21, Township 21 South, Range 37 East
Latitude 32° 27.589' North, Longitude 103° 10.545' West
NMOCD Reference # 1RP-1128**

Prepared For:

Southern Union Gas Services
801 S. Loop 464
Monahans, TX 79756

Prepared By:

Basin Environmental Service Technologies, LLC
3100 Plains Highway
Lovington, New Mexico 88260

January 2013

Joel W. Lowry
Project Manager

TABLE OF CONTENTS

1.0 INTRODUCTION & BACKGROUND INFORMATION.....	1
2.0 NMOC SITE CLASSIFICATION.....	1
3.0 SUMMARY OF SOIL REMEDIATION ACTIVITIES.....	2
4.0 QA/QC PROCEDURES.....	3
4.1 Soil Sampling.....	3
4.2 Decontamination of Equipment.....	3
4.3 Laboratory Protocol.....	3
5.0 SITE CLOSURE REQUEST.....	4
6.0 LIMITATIONS.....	4
7.0 DISTRIBUTION.....	5

FIGURES

Figure 1 – Site Location Map

Figure 2 – Site & Sample Location Map

TABLES

Table 1 – Concentrations of Benzene, BTEX, TPH & Chloride in Soil

APPENDICES

Appendix A – Photographs

Appendix B – Laboratory Analytical Reports

Appendix C – Disposal Manifests

Appendix D – Release Notification and Corrective Action (Form C-141

1.0 INTRODUCTION & BACKGROUND INFORMATION

Basin Environmental Service Technologies, LLC (Basin), on behalf of Southern Union Gas Services (Southern Union), has prepared this *Remediation Summary & Risk-Based Site Closure Request* for the release site known as the Wantz Compressor Station Historical. The legal description of the release site is Unit Letter "M" (SW/SW), Section 21, Township 21 South, Range 37 East, in Lea County, New Mexico. The geographic coordinates of the release site are 32° 27.589' North latitude and 103° 10.545' West longitude. The property affected by the release is owned by the Mary E Wantz Estate. Please reference Figure 1 for a "Site Location Map".

On November 13, 2006, Southern Union discovered a release had occurred at the Wantz Compressor Station. The "Release Notification and Corrective Action" (Form C-141) indicated a two-inch (2") line from an inlet scrubber on a two hundred ten barrel (210 bbl) storage tank failed, resulting in the release of approximately six barrels (6 bbls) of crude oil. During initial response activities, a temporary plug was installed, and approximately four barrels (4 bbls) of free- standing fluid was recovered. The release affected approximately five hundred eighty square feet (580 ft²) of caliche pad. Most of the affected area is under process piping and piping supports. The release was reported to the New Mexico Oil Conservation Division (NMOCD) Hobbs District Office on November 20, 2006. General photographs of the release site are provided as Appendix A. The Form C-141 is provided as Appendix D.

2.0 NMOCD SITE CLASSIFICATION

A search of the New Mexico Water Rights Reporting System (NMWRRS) database maintained by the New Mexico Office of the State Engineer (NMOSE) indicated information was unavailable for Section 21, Township 21 South, Range 37 East. An NMOCD representative indicated the depth to groundwater is approximately eighty-five (85') bgs on the initial Form C-141. Based on the NMOCD ranking system, ten (10) points will be assigned to the site as a result of this criterion.

There is one (1) domestic water well approximately two hundred fifteen feet (215') northwest (up-gradient) of the release site. Based on the NMOCD ranking system, ten (10) points will be assigned to the site as a result of this criterion.

There are no surface water bodies within one thousand feet (1,000') of the release. Based on the NMOCD ranking system, zero (0) points will be assigned to the site as a result of this criterion.

NMOCD guidelines indicate the Wantz Compressor Station Historical Release Site has an initial ranking score of twenty (20) points. The soil remediation levels for a site with a ranking score of greater than nineteen (>19) points are as follows:

- Benzene – 10 mg/Kg (ppm)
- Benzene, toluene, ethylbenzene and xylene (BTEX) – 50 mg/Kg (ppm)
- Total petroleum hydrocarbons (TPH) – 100 mg/Kg (ppm)

The New Mexico Administrative Code (NMAC) does not currently specify a remediation level for chloride concentrations in soil. Chloride remediation levels are set by the NMOCD on a site-specific basis.

3.0 SUMMARY OF SOIL REMEDIATION ACTIVITIES

Beginning November 16, 2006, remediation activities were at the release site by an environmental contractor that is no longer affiliated with the site. Work records indicate impacted medium was shoveled by hand and stockpiled on-site atop plastic sheeting pending final disposition.

On November 22, 2006, approximately twelve cubic yards (12 yd³) of impacted soil was transported to Southern Union Gas Services' Landfarm (Discharge Permit # NM-02-0019) for treatment.

On November 28, 2006, three (3) soil samples (POR @ 3', B-12 10 inches and B-Comp. 10 inches) were collected from the excavated area and submitted to Xenco Laboratories, of Odessa, Texas, for analysis of BTEX and TPH concentrations in accordance with EPA Methods SW 846-8021B and SW 846-8015M, respectively. Laboratory analytical results indicated benzene concentrations ranged from less than the laboratory method detection limit (MDL) for soil sample B-Comp. 10" to 15.0 mg/Kg for soil sample POR @ 3'. Analytical results indicated BTEX concentrations ranged from 0.1938 mg/Kg for soil sample B-Comp. 10" to 245.0 mg/Kg for soil samples POR @ 3'. TPH concentrations ranged from 519.8 mg/Kg for soil sample B-Comp. 10" to 38,300 mg/Kg for soil sample POR @ 3'. Table 1 summarizes the "Concentrations of Benzene, BTEX, TPH & Chloride in Soil". Soil sample locations are depicted in Figure 2, "Site & Sample Location Map". Laboratory analytical reports are provided as Appendix B.

On September 25, 2012, Basin responded to the historical release site. An initial soil sample (Release Point) was collected from the floor of the open excavation near the inferred release point. The soil sample was submitted to Xenco Laboratories for analysis of BTEX, TPH and chloride concentrations. Laboratory analytical results indicated the concentration of BTEX was less than the appropriate laboratory MDL. Analytical results indicated the concentration of TPH was 3,671 mg/Kg. The concentration of chloride was 2.47 mg/Kg. Based on laboratory analytical reports, further excavation would be required in the area defined by soil sample Release Point.

On October 10, 2012, the area defined by soil sample Release Point was advanced an additional one foot (1'). Four (4) soil samples (Release Point @ 4', East End @ .5', Middle @ 1' and West End @ 1.5') were collected from the excavation and submitted to the laboratory for analysis of TPH and chloride concentrations. Laboratory analytical results indicated TPH concentrations ranged from less than the appropriate laboratory MDL for soil samples East End @ 0.5', Middle @ 1' and West End @ 1.5' to 641.7 mg/Kg for soil sample Release Point @ 4'. Analytical results indicated chloride concentrations ranged from less than the appropriate laboratory MDL for soil samples East End @ 0.5', Middle @ 1' and West End @ 1.5' to 17.8 mg/Kg for soil sample Release Point @ 4'. Based on laboratory analytical reports, further excavation would be required in the area defined by soil sample Release Point @ 4'.

A five-point composite soil sample (North Stockpile) was collected from an on-site stockpile in an effort to characterize the material. The soil sample was submitted to the laboratory for analysis of TPH and chloride concentrations. TPH and chloride concentrations were less than the appropriate laboratory MDL.

On December 4, 2012, the area defined by soil sample Release Point @ 4' was advanced an additional foot (1'). One soil sample (Release Point @ 5') was collected from the floor of the excavation and submitted to the laboratory for analysis of BTEX and TPH concentrations. Laboratory analytical results indicated the concentration of benzene was less than the laboratory MDL. Laboratory analytical results indicated the concentration of BTEX was 0.00165 mg/Kg. The concentration of TPH was 676 mg/Kg. The adjacent portion of the excavation was advanced to approximately two and one half feet (2.5') bgs pending the installation of a clay liner.

On December 28, 2012, upon receiving approval from the NMOCD, a twelve-inch (12") impermeable clay liner was installed in the floor of the excavation. The engineering control was designed to inhibit vertical migration of contaminants left in-situ from below the clay liner to the surface, protecting the vegetative zone, and shed moisture to the edge of the liner beyond the maximum extent of underlying impacted soil. Approximately twenty-four cubic yards (24 yd³) of impacted soil was transported to Sundance Services, Inc. (NMOCD Permit #01-003), for disposal. Copies of disposal manifests are provided as Appendix C. Impacted soil remaining in-situ will be addressed upon abandoning and decommissioning the active compressor facility.

4.0 QA/QC PROCEDURES

4.1 Soil Sampling

Soil samples were delivered to Xenco Laboratories, Inc., of Odessa, Texas, for BTEX, TPH, and/or chloride analyses using the methods described below:

- BTEX concentrations in accordance with EPA Method SW-846 8021b
- TPH concentrations in accordance with modified EPA Method SW-846 8015M
- Chloride concentrations in accordance with EPA Method 300/300.1

4.2 Decontamination of Equipment

Cleaning of the sampling equipment was the responsibility of the environmental technician. Prior to use, and between each sample, the sampling equipment was cleaned with Liqui-Nox® detergent and rinsed with distilled water.

4.3 Laboratory Protocol

The laboratory was responsible for proper QA/QC procedures after signing the chain-of-custody form(s). These procedures were either transmitted with the laboratory reports or are on file at the laboratory.

5.0 SITE CLOSURE REQUEST

Soil samples collected from the floor and sidewalls of the Wantz Compressor Station Historical Release Site excavation were analyzed by an NMOCD-approved laboratory, which determined concentrations of benzene, BTEX, TPH and chloride were less than the regulatory remediation action levels in each of the submitted soil samples, with the exception of soil sample Release Point @ 5', which exhibited a TPH concentration of 676 mg/Kg. Further excavation was impracticable given the presence of numerous active pipelines and congested nature of the facility. An NMOCD-approved twelve-inch (12") clay liner was installed on the floor of the excavation at approximately two and one-half feet (2.5') bgs to inhibit the vertical migration of any contaminants left in place. The site will be re-evaluated upon decommissioning and abandonment of the compressor station. Basin recommends Southern Union provide the NMOCD Hobbs District Office a copy of this *Remediation Summary & Risk-Based Site Closure Request* and request the NMOCD grant site closure to the Wantz Compressor Station Historical Release Site.

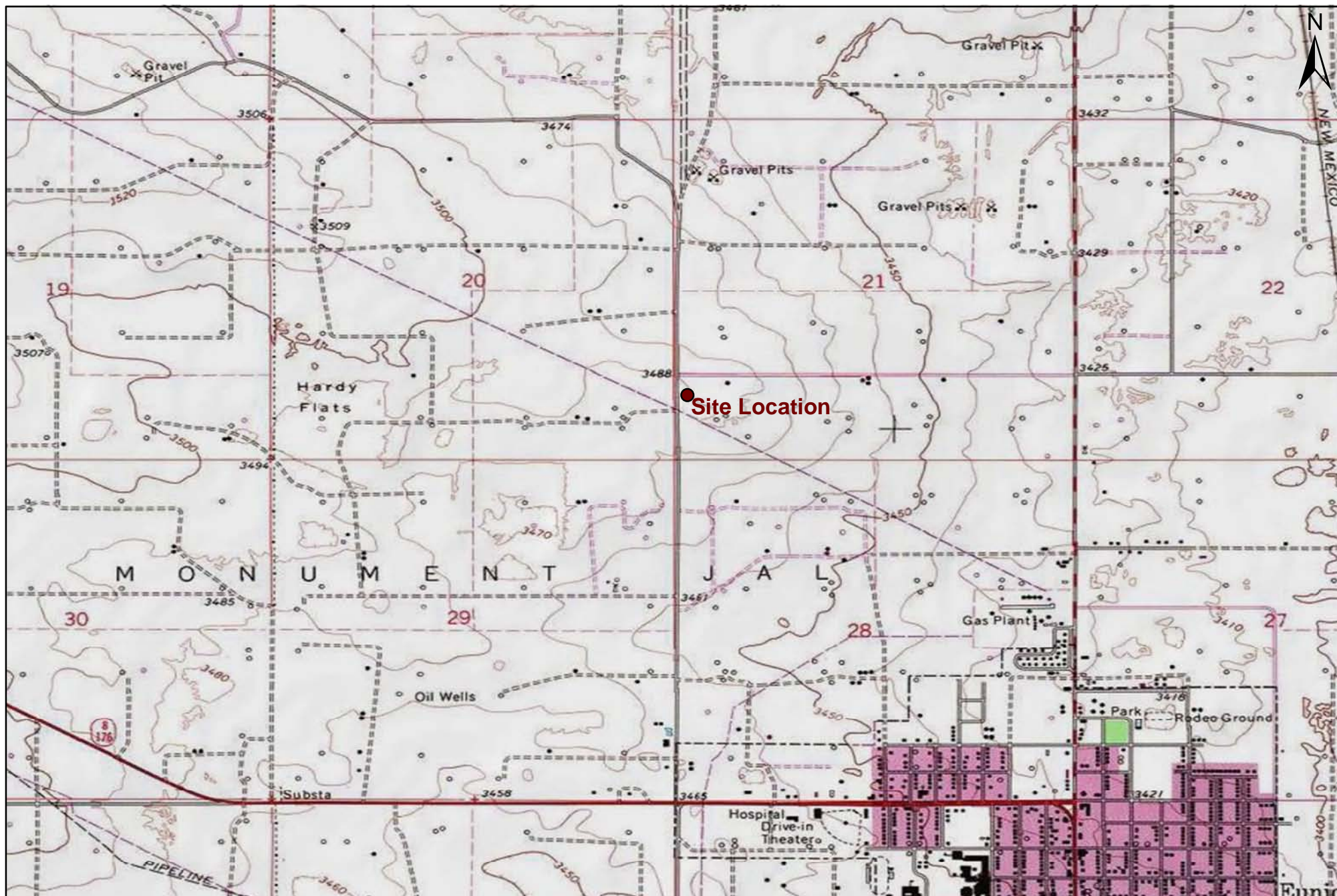
6.0 LIMITATIONS

Basin Environmental Service Technologies, LLC, has prepared this *Remediation Summary & Risk-Based Site Closure Request* to the best of its ability. No other warranty, expressed or implied, is made or intended. Basin has examined and relied upon documents referenced in the report and on oral statements made by certain individuals. Basin has not conducted an independent examination of the facts contained in referenced materials and statements. Basin has presumed the genuineness of these documents and statements and that the information provided therein is true and accurate. Basin has prepared this report in a professional manner, using the degree of skill and care exercised by similar environmental consultants. Basin notes that the facts and conditions referenced in this report may change over time, and the conclusions and recommendations set forth herein are applicable only to the facts and conditions as described at the time of this report.

This report has been prepared for the benefit of Southern Union Gas Services. The information contained in this report, including all exhibits and attachments, may not be used by any other party without the express consent of Basin Environmental Service Technologies, LLC, and/or Southern Union Gas Services.

7.0 DISTRIBUTION:

- Copy 1: Geoffrey Leking
 New Mexico Energy, Minerals and Natural Resources Department
 Oil Conservation Division (District 1)
 1625 French Drive
 Hobbs, NM 88240
 GeoffreyR.Leking@state.nm.us
- Copy 2: Rose Slade
 Southern Union Gas Services
 801 S. Loop 464
 Monahans, Texas 79756
 rose.slade@sug.com
- Copy 3: Basin Environmental Service Technologies, LLC
 P.O. Box 301
 Lovington, New Mexico 88260



1,000 500 0 1,000 2,000
 Distance in Feet

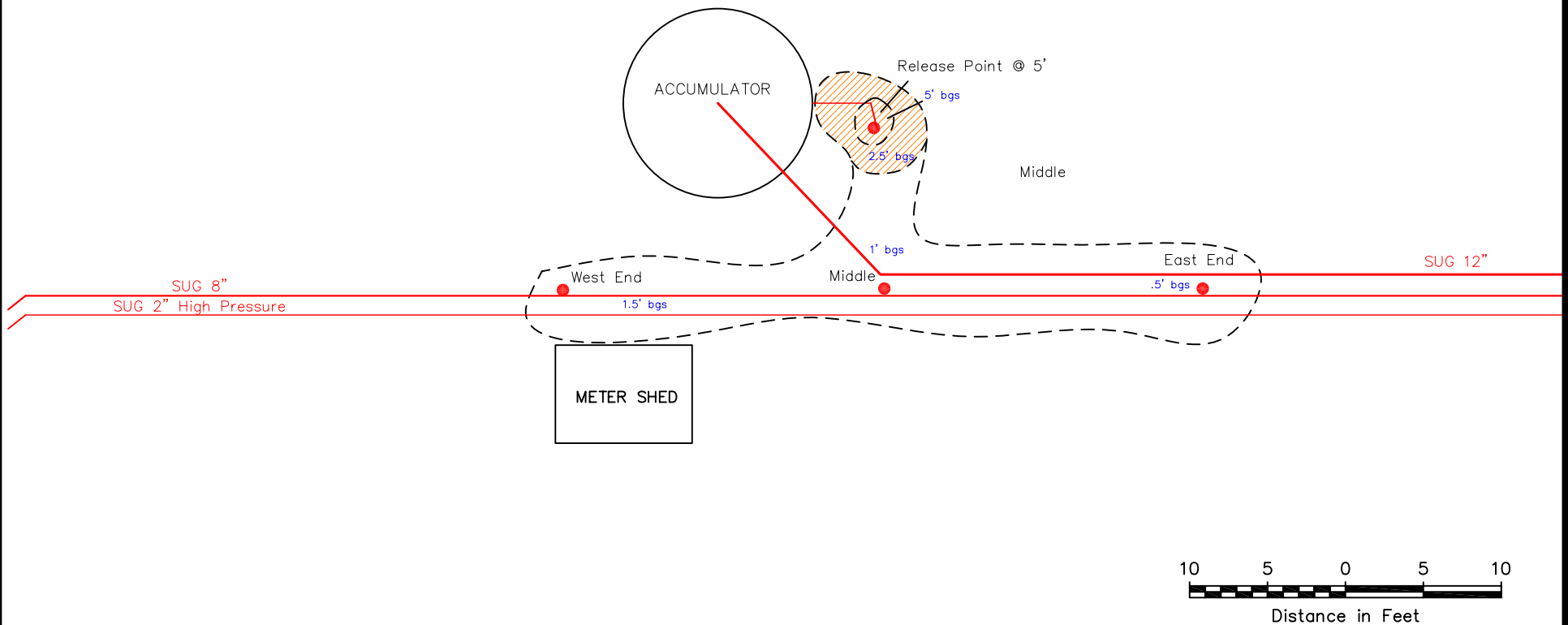
Figure 1
Site Location Map
 Southern Union Gas Services
 Wantz Compressor
 Lea County, New Mexico
 NMOCD Reference #: 1RP-1128



Basin Environmental Service Technologies, LLC
 3100 Plains Hwy.
 Lovington, NM 88260

Drawn By: BJA Checked By: JWL

November 12, 2012 Scale: 1" = 2000'



Legend

- Sample Location
- ▨ Clay Liner
- - - Excavation Extent
- Pipeline

Figure 2
Site & Sample Location Map
Southern Union Gas Services
Wantz Compressor
NMOCD Ref RP-1128
Lea County, New Mexico

Basin Environmental Services

Prep By: JWL

Checked By: BJA

October 16, 2012

Scale 1"=10'

TABLE 1

CONCENTRATIONS OF BENZENE, BTEX, TPH & CHLORIDE IN SOIL

SOUTHERN UNION GAS SERVICES
WANTZ COMPRESSOR STATION
HISTORICAL RELEASE SITE
LEA COUNTY, NEW MEXICO
NMOCD REF# 1RP-1128

SAMPLE LOCATION	SAMPLE DEPTH (BGS)	SAMPLE DATE	SOIL STATUS	METHOD: EPA SW 846-8021B, 5030					METHOD: 8015M			TOTAL TPH C ₆ -C ₂₈ (mg/Kg)	EPA: 300 CHLORIDE (mg/Kg)
				BENZENE (mg/Kg)	TOLUENE (mg/Kg)	ETHYL-BENZENE (mg/Kg)	TOTAL XYLENES (mg/Kg)	TOTAL BTEX (mg/Kg)	GRO C ₆ -C ₁₂ (mg/Kg)	DRO C ₁₂ -C ₂₈ (mg/Kg)	ORO C ₂₈ -C ₃₅ (mg/Kg)		
POR @ 3'	3'	11/28/2006	N/A	15.0	73.3	44.8	111.9	245.0	9,580	27,500	1,200	38,300	-
B-12 10 inches	10"	11/28/2006	N/A	0.021	0.204	0.158	0.727	1.11	104	419	17.2	540.2	-
B-Comp. 10 inches	10"	11/28/2006	N/A	<0.0250	0.0411	0.0337	0.119	0.1938	72.0	435	12.8	519.8	-
Release Point	3'	9/25/2012	In-Situ	<0.00104	<0.00207	<0.00104	<0.00207	<0.00207	<78.3	3,350	321	3,671	2.47
Release Point @ 4'	4'	10/10/2012	Excavated	-	-	-	-	-	<16.8	553.0	88.7	641.7	17.8
East End @ 0.5'	0.5'	10/10/2012	In-Situ	-	-	-	-	-	<17.3	<17.3	<17.3	<17.3	<1.09
Middle @ 1'	1'	10/10/2012	In-Situ	-	-	-	-	-	<15.9	<15.9	<15.9	<15.9	<0.938
West End @ 1.5'	1.5'	10/10/2012	In-Situ	-	-	-	-	-	<15.8	<15.8	<15.8	<15.8	<1.01
North Stockpile	N/A	10/10/2012	Stockpiled	-	-	-	-	-	<16.4	<16.4	<16.4	<16.4	<1.00
Release Point @ 5'	5'	12/4/2012	In-Situ	<0.00105	<0.00209	<0.00105	0.00165	0.00165	<15.7	631	44.7	676	-
NMOCD Standard				10				50				100	250

- = Not analyzed.



Photograph of the initial release at the Wantz Compressor Historical Release Site.



Photograph of the initial release at the Wantz Compressor Historical Release Site.



Photograph of initial excavation activities at the Wantz Compressor Historical Release Site.



Photograph of most recent excavation activities at the Wantz Compressor Historical Release Site.



Photograph of most recent excavation activities at the Wantz Compressor Historical Release Site.



Photograph of the clay liner installation at the Wantz Compressor Historical Release Site.



Photograph of the clay liner installation at the Wantz Compressor Historical Release Site.



Photograph of the Wantz Compressor Historical Release Site after being backfilled.



SUNDANCE SERVICES, Inc.

P.O. Box 1737 Eunice, New Mexico 88231
(575) 394-2511

TICKET No. **231153**

LEASE OPERATOR/SHIPPER/COMPANY: SILG

LEASE NAME: Wurtz Compressor 112 B

TRANSPORTER COMPANY: Basin Enuro.

TIME 1:26 AM/PM

DATE: 12-28-2012 VEHICLE NO: 08

GENERATOR COMPANY
MAN'S NAME: Rose Slade

CHARGE TO: SILG

RIG NAME
AND NUMBER

TYPE OF MATERIAL

☐ Production Water

☐ Drilling Fluids

☐ Rinsate

☐ Tank Bottoms

☒ Contaminated Soil

☐ Jet Out

☐ Solids

☐ BS&W Content:

☐ Call Out

Description: O/P

RRC or API #

C-133#

VOLUME OF MATERIAL ☐ BBLs. _____ :

☒ YARD 12 :

☐ _____

AS A CONDITION TO SUNDANCE SERVICES, INC.'S ACCEPTANCE OF THE MATERIALS SHIPPED WITH THIS JOB TICKET, OPERATOR/SHIPPER REPRESENTS AND WARRANTS THAT THE WASTE MATERIAL SHIPPED HERewith IS MATERIAL EXEMPT FROM THE RESOURCE, CONSERVATION AND RECOVERY ACT OF 1976, AS AMENDED FROM TIME TO TIME, 40 U.S.C. § 6901, et seq., THE NM HEALTH AND SAF. CODE § 361.001 et seq., AND REGULATIONS RELATED THERETO, BY VIRTUE OF THE EXEMPTION AFFORDED DRILLING FLUIDS, PRODUCED WATERS, AND OTHER WASTE ASSOCIATED WITH THE EXPLORATION, DEVELOPMENT OR PRODUCTION OF CRUDE OIL OR NATURAL GAS OR GEOTHERMAL ENERGY.

ALSO AS A CONDITION TO SUNDANCE SERVICES, INC.'S ACCEPTANCE OF THE MATERIALS SHIPPED WITH THIS JOB TICKET. TRANSPORTER REPRESENTS AND WARRANTS THAT ONLY THE MATERIAL DELIVERED BY OPERATOR/SHIPPER TO TRANSPORTER IS NOW DELIVERED BY TRANSPORTER TO SUNDANCE SERVICES, INC.'S FACILITY FOR DISPOSAL.

THIS WILL CERTIFY that the above Transporter loaded the material represented by this Transporter Statement at the above described location, and that it was tendered by the above described shipper. This will certify that no additional materials were added to this load, and that the material was delivered without incident.

DRIVER: [Signature]

(SIGNATURE)

FACILITY REPRESENTATIVE: [Signature]

(SIGNATURE)

White - Sundance

Canary - Sundance Acct #1

Pink - Transporter



SUNDANCE SERVICES, Inc.

P.O. Box 1737 Eunice, New Mexico 88231
(575) 394-2511

TICKET No. **231138**

LEASE OPERATOR/SHIPPER/COMPANY: **SLUG**

LEASE NAME: **Whitiz Compressor 112 B**

TRANSPORTER COMPANY: **Basin Envir.**

TIME **11:29** AM/PM

DATE: **12-28-2012** VEHICLE NO:

GENERATOR COMPANY
MAN'S NAME: **Rose Slade**

CHARGE TO: **SLUG**

RIG NAME
AND NUMBER

TYPE OF MATERIAL

- | | | |
|---|---|-----------------------------------|
| <input type="checkbox"/> Production Water | <input type="checkbox"/> Drilling Fluids | <input type="checkbox"/> Rinsate |
| <input type="checkbox"/> Tank Bottoms | <input checked="" type="checkbox"/> Contaminated Soil | <input type="checkbox"/> Jet Out |
| <input type="checkbox"/> Solids | <input type="checkbox"/> BS&W Content: | <input type="checkbox"/> Call Out |

Description: **o/o**

RRC or API #

C-133#

VOLUME OF MATERIAL ☐ BBLs. : **12** ☒ YARD : ☐

AS A CONDITION TO SUNDANCE SERVICES, INC.'S ACCEPTANCE OF THE MATERIALS SHIPPED WITH THIS JOB TICKET, OPERATOR/SHIPPER REPRESENTS AND WARRANTS THAT THE WASTE MATERIAL SHIPPED HERewith IS MATERIAL EXEMPT FROM THE RESOURCE, CONSERVATION AND RECOVERY ACT OF 1976, AS AMENDED FROM TIME TO TIME, 40 U.S.C. § 6901, et seq., THE NM HEALTH AND SAF. CODE § 361.001 et seq., AND REGULATIONS RELATED THERETO, BY VIRTUE OF THE EXEMPTION AFFORDED DRILLING FLUIDS, PRODUCED WATERS, AND OTHER WASTE ASSOCIATED WITH THE EXPLORATION, DEVELOPMENT OR PRODUCTION OF CRUDE OIL OR NATURAL GAS OR GEOTHERMAL ENERGY.

ALSO AS A CONDITION TO SUNDANCE SERVICES, INC.'S ACCEPTANCE OF THE MATERIALS SHIPPED WITH THIS JOB TICKET. TRANSPORTER REPRESENTS AND WARRANTS THAT ONLY THE MATERIAL DELIVERED BY OPERATOR/SHIPPER TO TRANSPORTER IS NOW DELIVERED BY TRANSPORTER TO SUNDANCE SERVICES, INC.'S FACILITY FOR DISPOSAL.

THIS WILL CERTIFY that the above Transporter loaded the material represented by this Transporter Statement at the above described location, and that it was tendered by the above described shipper. This will certify that no additional materials were added to this load, and that the material was delivered without incident.

DRIVER: **[Signature]**
(SIGNATURE)

FACILITY REPRESENTATIVE: **Connie Romero**
(SIGNATURE)

White - Sundance

Canary - Sundance Acct #1

Pink - Transporter

District I
1625 N. French Dr., Hobbs, NM 88240
District II
1301 W. Grand Avenue, Artesia, NM 88210
District III
1000 Rio Brazos Road, Aztec, NM 87410
District IV
1220 S. St. Francis Dr., Santa Fe, NM 87505

State of New Mexico
Energy Minerals and Natural Resources
Oil Conservation Division
1220 South St. Francis Dr.
Santa Fe, NM 87505

Form C-141
Revised October 10, 2003

Submit 2 Copies to appropriate
District Office in accordance
with Rule 116 on back
side of form

Release Notification and Corrective Action

OPERATOR

☒ Initial Report ☐ Final Report

Name of Company	Southern Union Gas Services, Ltd.	Contact	Tony Savoie
Address	P.O. Box 1226 Jal, N.M. 88252	Telephone No.	505-395-2116
Facility Name	Lea County Field Dept.	Facility Type	Natural Gas Gathering
Surface Owner: Mary E Wantz,est.		Mineral Owner: Mary E. Wantz,est.	Lease No.

LOCATION OF RELEASE

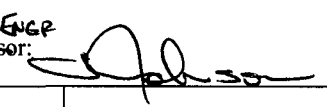
Unit Letter	Section	Township	Range	Feet from the	North/South Line	Feet from the	East/West Line	County
M	21	21S	37E					Lea

Latitude N32 27.592 Longitude W103 30.334

NATURE OF RELEASE

Type of Release : Crude oil.	Volume of Release: 6 bbls	Volume Recovered 4 bbls
Source of Release : 2" line from inlet scrubber to storage tanks.	Date and Hour of Occurrence Unknown	Date and Hour of Discovery 11/13/06 Time: 11:00 a.m.
Was Immediate Notice Given? <input type="checkbox"/> Yes <input checked="" type="checkbox"/> No <input checked="" type="checkbox"/> Not Required	If YES, To Whom?	
By Whom?	Date and Hour:	
Was a Watercourse Reached? <input type="checkbox"/> Yes <input checked="" type="checkbox"/> No	If YES, Volume Impacting the Watercourse.	
If a Watercourse was Impacted, Describe Fully.*		
Describe Cause of Problem and Remedial Action Taken.* The 2" line from the inlet scrubber to the 210 bl. Storage tanks developed a leak. The line was excavated by hand and a temporary plug was placed in the fitting. <input type="checkbox"/>		
Describe Area Affected and Cleanup Action Taken. The affected area is inside the fenced area for the Compressor Station, total affected area is approximately 580 sq.ft. Most of the affected area is under process piping and piping supports. All of the free liquid was removed with a vacuum truck. The affected soil will be removed and the area will be remediated in accordance to the NMOCD guidelines for the remediation of leaks and spills.		
I hereby certify that the information given above is true and complete to the best of my knowledge and understand that pursuant to NMOCD rules and regulations all operators are required to report and/or file certain release notifications and perform corrective actions for releases which may endanger public health or the environment. The acceptance of a C-141 report by the NMOCD marked as "Final Report" does not relieve the operator of liability should their operations have failed to adequately investigate and remediate contamination that pose a threat to ground water, surface water, human health or the environment. In addition, NMOCD acceptance of a C-141 report does not relieve the operator of responsibility for compliance with any other federal, state, or local laws and/or regulations.		

OIL CONSERVATION DIVISION

Signature: Tony Savoie	Approved by District Supervisor: 	
Printed Name: John A. Savoie	Approval Date: 11-20-06	Expiration Date:
Title: EH&S Comp. Coord.	Conditions of Approval:	Attached <input type="checkbox"/>
E-mail Address: john.savoie@sug.com		
Date: 11/15/06	Phone: 505-395-2116	

* Attach Additional Sheets If Necessary

incident - n PAC 0633337214
application - n PAC 0633337409

RP#1127

District I
1625 N. French Dr., Hobbs, NM 88240
District II
1301 W. Grand Avenue, Artesia, NM 88210
District III
1000 Rio Brazos Road, Aztec, NM 87410
District IV
1220 S. St. Francis Dr., Santa Fe, NM 87505

State of New Mexico
Energy Minerals and Natural Resources

Oil Conservation Division
1220 South St. Francis Dr.
Santa Fe, NM 87505

Form C-141
Revised October 10, 2003

Submit 2 Copies to appropriate
District Office in accordance
with Rule 116 on back
side of form

Release Notification and Corrective Action

OPERATOR

Initial Report ☐ Final Report ☒

Name of Company	Southern Union Gas Services, Ltd.	Contact	Crystal Callaway
Address	801 S. Loop 464, Monahans, TX, 79756	Telephone No.	817-302-9407
Facility Name:	Wantz Compressor Station (RP-1128)	Facility Type	Natural Gas Gathering

Surface Owner	Mary E. Wantz, est.	Mineral Owner:	Mary E. Wantz, est.	Lease No.	
---------------	---------------------	----------------	---------------------	-----------	--

LOCATION OF RELEASE

Unit Letter	Section	Township	Range	Feet from the	North/South Line	Feet from the	East/West Line	County
M	21	21S	37E					Lea

Latitude N32 27.592

Longitude W103 30.334

NATURE OF RELEASE

Type of Release: Crude oil.	Volume of Release 6 bbls	Volume Recovered 4 bbls
Source of Release: 2" line from inlet scrubber to storage tanks	Date and Hour of Occurrence Unknown	Date and Hour of Discovery 11/13/06 Time: 11:00AM
Was Immediate Notice Given? <input type="checkbox"/> Yes <input checked="" type="checkbox"/> No <input checked="" type="checkbox"/> Not Required	If YES, To Whom?	
By Whom?	Date and Hour:	
Was a Watercourse Reached? <input type="checkbox"/> Yes <input checked="" type="checkbox"/> No	If YES, Volume Impacting the Watercourse.	

If a Watercourse was Impacted, Describe Fully.*

Describe Cause of Problem and Remedial Action Taken:

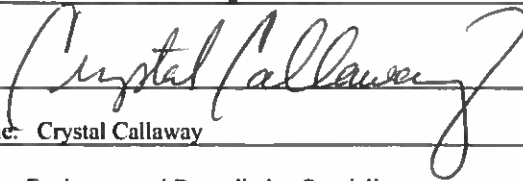
The 2" line from the inlet scrubber to the 210 bbl storage tanks developed a leak. The line was excavated by hand and a temporary plug was placed in the fitting.

Describe Area Affected and Cleanup Action Taken. The affected area is inside the fenced area for the Wantz Compressor Station, total affected area is approximately 580 sq. ft. Most of the affected area is under process piping and piping supports. All of the free liquid was removed with a vacuum truck. The affected soil will be removed and the area will be remediated in accordance to the NMOCD Guidelines for the remediation of leaks and spills.

On various dates between November 28, 2006, and December 28, 2012, approximately 36 yd³ of impacted material was hand excavated from the release site and transported to an NMOCD-approved facility. On December 28, 2012, on receiving approval from the NMOCD, a clay liner was installed in the floor of the excavation atop the area exhibiting TPH concentrations above NMOCD Regulatory Remediation Action Levels. The release site will be readdressed at time of abandonment.

Please reference the attached Basin Environmental Services Technologies Remediation Summary and Risk-Based Site Closure Request for details of remedial activities and the site investigation.

I hereby certify that the information given above is true and complete to the best of my knowledge and understand that pursuant to NMOCD rules and regulations all operators are required to report and/or file certain release notifications and perform corrective actions for releases, which may endanger public health or the environment. The acceptance of a C-141 report by the NMOCD marked as "Final Report" does not relieve the operator of liability should their operations have failed to adequately investigate and remediate contamination that pose a threat to ground water, surface water, human health or the environment. In addition, NMOCD acceptance of a C-141 report does not relieve the operator of responsibility for compliance with any other federal, state, or local laws and/or regulations.

Signature: 		OIL CONSERVATION DIVISION	
Printed Name: Crystal Callaway		Approved by District Supervisor:	
Title: Senior Environmental Remediation Specialist		Approval Date:	Expiration Date:
E-mail Address: Crystal.Callaway@Regencygas.com		Conditions of Approval:	
Date: 10/23/14	Phone: 817-302-9407		