

APPENDIX D

Laboratory Data Reports & Chain-of-Custody Documents

Summary Report

Thomas Franklin
APEX/Titan
2351 W. Northwest Hwy.
Suite 3321
Dallas, Tx 75220

Report Date: November 24, 2014

Work Order: 14112142



Project Location: Lea County, NM
Project Name: Regency/RR Sims 10" MA-3 Line
Project Number: 7030714G099

Sample	Description	Matrix	Date Taken	Time Taken	Date Received
380403	NE Side Wall	soil	2014-11-21	12:12	2014-11-21

Sample - Field Code	BTEX				TPH DRO - NEW	TPH GRO
	Benzene (mg/Kg)	Toluene (mg/Kg)	Ethylbenzene (mg/Kg)	Xylene (mg/Kg)	DRO (mg/Kg)	GRO (mg/Kg)
380403 - NE Side Wall	0.0818	0.0602	0.0706	0.162	<50.0	<4.00

Sample: 380403 - NE Side Wall

Param	Flag	Result	Units	RL
Chloride		96.0	mg/Kg	4



6701 Aberdeen Avenue, Suite 9
200 East Sunset Road, Suite E
5002 Basin Street, Suite A1
(BioAquatic) 2501 Mayes Rd., Suite 100

Lubbock, Texas 79424
El Paso, Texas 79922
Midland, Texas 79703
Carrollton, Texas 75006

800-378-1296

806-794-1296

FAX 806-794-1298

915-585-3443

FAX 915-585-4944

432-689-6301

FAX 432-689-6313

972-242-7750

E-Mail: lab@traceanalysis.com WEB: www.traceanalysis.com

Certifications

WBE HUB NCTRCA DBE NELAP DoD LELAP Kansas Oklahoma ISO 17025

Analytical and Quality Control Report

Thomas Franklin
APEX/Titan
2351 W. Northwest Hwy.
Suite 3321
Dallas, Tx, 75220

Report Date: November 24, 2014

Work Order: 14112142



Project Location: Lea County, NM
Project Name: Regency/RR Sims 10" MA-3 Line
Project Number: 7030714G099

Enclosed are the Analytical Report and Quality Control Report for the following sample(s) submitted to TraceAnalysis, Inc.

Sample	Description	Matrix	Date Taken	Time Taken	Date Received
380403	NE Side Wall	soil	2014-11-21	12:12	2014-11-21

These results represent only the samples received in the laboratory. The Quality Control Report is generated on a batch basis. All information contained in this report is for the analytical batch(es) in which your sample(s) were analyzed.

This report consists of a total of 18 pages and shall not be reproduced except in its entirety, without written approval of TraceAnalysis, Inc.

Dr. Blair Leftwich, Director
James Taylor, Assistant Director
Brian Pellam, Operations Manager

Report Contents

Case Narrative	3
Analytical Report	4
Sample 380403 (NE Side Wall)	4
Method Blanks	6
QC Batch 117451 - Method Blank (1)	6
QC Batch 117452 - Method Blank (1)	6
QC Batch 117457 - Method Blank (1)	6
QC Batch 117474 - Method Blank (1)	7
Laboratory Control Spikes	8
QC Batch 117451 - LCS (1)	8
QC Batch 117452 - LCS (1)	8
QC Batch 117457 - LCS (1)	9
QC Batch 117474 - LCS (1)	9
Matrix Spikes	11
QC Batch 117451 - MS (1)	11
QC Batch 117452 - MS (1)	11
QC Batch 117457 - MS (1)	12
QC Batch 117474 - xMS (1)	12
Calibration Standards	14
QC Batch 117451 - CCV (2)	14
QC Batch 117451 - CCV (3)	14
QC Batch 117452 - CCV (2)	14
QC Batch 117452 - CCV (3)	14
QC Batch 117457 - ICV (1)	15
QC Batch 117457 - CCV (1)	15
QC Batch 117474 - CCV (2)	15
QC Batch 117474 - CCV (3)	15
Appendix	17
Report Definitions	17
Laboratory Certifications	17
Standard Flags	17
Attachments	18

Case Narrative

Samples for project Regency/RR Sims 10" MA-3 Line were received by TraceAnalysis, Inc. on 2014-11-21 and assigned to work order 14112142. Samples for work order 14112142 were received intact at a temperature of 6.7 C.

Samples were analyzed for the following tests using their respective methods.

Test	Method	Prep Batch	Prep Date	QC Batch	Analysis Date
BTEX	S 8021B	99299	2014-11-21 at 14:20	117451	2014-11-23 at 08:01
Chloride (Titration)	SM 4500-Cl B	99308	2014-11-21 at 17:25	117457	2014-11-22 at 16:48
TPH DRO - NEW	S 8015 D	99311	2014-11-21 at 15:00	117474	2014-11-24 at 11:40
TPH GRO	S 8015 D	99299	2014-11-21 at 14:20	117452	2014-11-23 at 08:03

Results for these samples are reported on a wet weight basis unless data package indicates otherwise.

A matrix spike (MS) and matrix spike duplicate (MSD) sample is chosen at random from each preparation batch. The MS and MSD will indicate if a site specific matrix problem is occurring, however, it may not pertain to the samples for work order 14112142 since the sample was chosen at random. Therefore, the validity of the analytical data reported has been determined by the laboratory control sample (LCS) and the method blank (MB). These quality control measures are performed with each preparation batch to ensure data integrity.

All other exceptions associated with this report have been footnoted on the appropriate analytical page to assist in general data comprehension. Please contact the laboratory directly if there are any questions regarding this project.

Report Date: November 24, 2014
7030714G099

Work Order: 14112142
Regency/RR Sims 10" MA-3 Line

Page Number: 4 of 18
Lea County, NM

Analytical Report

Sample: 380403 - NE Side Wall

Laboratory: Midland
Analysis: BTEX
QC Batch: 117451
Prep Batch: 99299

Analytical Method: S 8021B
Date Analyzed: 2014-11-23
Sample Preparation: 2014-11-21

Prep Method: S 5035
Analyzed By: AK
Prepared By: AK

Parameter	Flag	Cert	RL Result	Units	Dilution	RL
Benzene		5	0.0818	mg/Kg	1	0.0200
Toluene		5	0.0602	mg/Kg	1	0.0200
Ethylbenzene		5	0.0706	mg/Kg	1	0.0200
Xylene		5	0.162	mg/Kg	1	0.0200

Surrogate	Flag	Cert	Result	Units	Dilution	Spike Amount	Percent Recovery	Recovery Limits
Trifluorotoluene (TFT)			1.98	mg/Kg	1	2.00	99	70 - 130
4-Bromofluorobenzene (4-BFB)			2.18	mg/Kg	1	2.00	109	70 - 130

Sample: 380403 - NE Side Wall

Laboratory: Midland
Analysis: Chloride (Titration)
QC Batch: 117457
Prep Batch: 99308

Analytical Method: SM 4500-Cl B
Date Analyzed: 2014-11-22
Sample Preparation: 2014-11-21

Prep Method: N/A
Analyzed By: SC
Prepared By: SC

Parameter	Flag	Cert	RL Result	Units	Dilution	RL
Chloride			96.0	mg/Kg	5	4.00

Sample: 380403 - NE Side Wall

Laboratory: Midland
Analysis: TPH DRO - NEW
QC Batch: 117474
Prep Batch: 99311

Analytical Method: S 8015 D
Date Analyzed: 2014-11-24
Sample Preparation: 2014-11-21

Prep Method: N/A
Analyzed By: SC
Prepared By: SC

Parameter	Flag	Cert	RL Result	Units	Dilution	RL
DRO	U	5	<50.0	mg/Kg	1	50.0

Report Date: November 24, 2014
7030714G099

Work Order: 14112142
Regency/RR Sims 10" MA-3 Line

Page Number: 5 of 18
Lea County, NM

Surrogate	Flag	Cert	Result	Units	Dilution	Spike Amount	Percent Recovery	Recovery Limits
n-Tricosane			118	mg/Kg	1	100	118	70 - 130

Sample: 380403 - NE Side Wall

Laboratory: Midland
Analysis: TPH GRO
QC Batch: 117452
Prep Batch: 99299

Analytical Method: S 8015 D
Date Analyzed: 2014-11-23
Sample Preparation: 2014-11-21

Prep Method: S 5035
Analyzed By: AK
Prepared By: AK

Parameter	Flag	Cert	RL Result	Units	Dilution	RL
GRO	U	5	<4.00	mg/Kg	1	4.00

Surrogate	Flag	Cert	Result	Units	Dilution	Spike Amount	Percent Recovery	Recovery Limits
Trifluorotoluene (TFT)			1.83	mg/Kg	1	2.00	92	70 - 130
4-Bromofluorobenzene (4-BFB)			1.76	mg/Kg	1	2.00	88	70 - 130

Method Blanks

Method Blank (1) QC Batch: 117451

QC Batch: 117451 Date Analyzed: 2014-11-23 Analyzed By: AK
Prep Batch: 99299 QC Preparation: 2014-11-21 Prepared By: AK

Parameter	Flag	Cert	MDL Result	Units	RL
Benzene		5	<0.00533	mg/Kg	0.02
Toluene		5	<0.00645	mg/Kg	0.02
Ethylbenzene		5	<0.0116	mg/Kg	0.02
Xylene		5	<0.00874	mg/Kg	0.02

Surrogate	Flag	Cert	Result	Units	Dilution	Spike Amount	Percent Recovery	Recovery Limits
Trifluorotoluene (TFT)			2.10	mg/Kg	1	2.00	105	70 - 130
4-Bromofluorobenzene (4-BFB)			2.24	mg/Kg	1	2.00	112	70 - 130

Method Blank (1) QC Batch: 117452

QC Batch: 117452 Date Analyzed: 2014-11-23 Analyzed By: AK
Prep Batch: 99299 QC Preparation: 2014-11-21 Prepared By: AK

Parameter	Flag	Cert	MDL Result	Units	RL
GRO		5	<2.32	mg/Kg	4

Surrogate	Flag	Cert	Result	Units	Dilution	Spike Amount	Percent Recovery	Recovery Limits
Trifluorotoluene (TFT)			1.91	mg/Kg	1	2.00	96	70 - 130
4-Bromofluorobenzene (4-BFB)			1.70	mg/Kg	1	2.00	85	70 - 130

Method Blank (1) QC Batch: 117457

QC Batch: 117457 Date Analyzed: 2014-11-22 Analyzed By: SC
Prep Batch: 99308 QC Preparation: 2014-11-21 Prepared By: SC

Report Date: November 24, 2014
7030714G099

Work Order: 14112142
Regency/RR Sims 10" MA-3 Line

Page Number: 7 of 18
Lea County, NM

Parameter	Flag	Cert	MDL Result	Units	RL
Chloride			<3.85	mg/Kg	4

Method Blank (1) QC Batch: 117474

QC Batch: 117474
Prep Batch: 99311

Date Analyzed: 2014-11-24
QC Preparation: 2014-11-21

Analyzed By: SC
Prepared By: SC

Parameter	Flag	Cert	MDL Result	Units	RL
DRO		5	<7.41	mg/Kg	50

Surrogate	Flag	Cert	Result	Units	Dilution	Spike Amount	Percent Recovery	Recovery Limits
n-Tricosane			109	mg/Kg	1	100	109	70 - 130

Laboratory Control Spikes

Laboratory Control Spike (LCS-1)

QC Batch: 117451
Prep Batch: 99299

Date Analyzed: 2014-11-23
QC Preparation: 2014-11-21

Analyzed By: AK
Prepared By: AK

Param	F	C	LCS Result	Units	Dil.	Spike Amount	Matrix Result	Rec.	Rec. Limit
Benzene		5	1.71	mg/Kg	1	2.00	<0.00533	86	70 - 130
Toluene		5	1.80	mg/Kg	1	2.00	<0.00645	90	70 - 130
Ethylbenzene		5	1.97	mg/Kg	1	2.00	<0.0116	98	70 - 130
Xylene		5	5.94	mg/Kg	1	6.00	<0.00874	99	70 - 130

Percent recovery is based on the spike result. RPD is based on the spike and spike duplicate result.

Param	F	C	LCS Result	Units	Dil.	Spike Amount	Matrix Result	Rec.	Rec. Limit	RPD	RPD Limit
Benzene		5	1.75	mg/Kg	1	2.00	<0.00533	88	70 - 130	2	20
Toluene		5	1.82	mg/Kg	1	2.00	<0.00645	91	70 - 130	1	20
Ethylbenzene		5	1.98	mg/Kg	1	2.00	<0.0116	99	70 - 130	0	20
Xylene		5	6.07	mg/Kg	1	6.00	<0.00874	101	70 - 130	2	20

Percent recovery is based on the spike result. RPD is based on the spike and spike duplicate result.

Surrogate	LCS Result	LCS Result	Units	Dil.	Spike Amount	LCS Rec.	LCS Rec.	Rec. Limit
Trifluorotoluene (TFT)	2.05	2.00	mg/Kg	1	2.00	102	100	70 - 130
4-Bromofluorobenzene (4-BFB)	2.27	2.23	mg/Kg	1	2.00	114	112	70 - 130

Laboratory Control Spike (LCS-1)

QC Batch: 117452
Prep Batch: 99299

Date Analyzed: 2014-11-23
QC Preparation: 2014-11-21

Analyzed By: AK
Prepared By: AK

Param	F	C	LCS Result	Units	Dil.	Spike Amount	Matrix Result	Rec.	Rec. Limit
GRO		5	15.3	mg/Kg	1	20.0	<2.32	76	70 - 130

Percent recovery is based on the spike result. RPD is based on the spike and spike duplicate result.

continued ...

Report Date: November 24, 2014
7030714G099

Work Order: 14112142
Regency/RR Sims 10" MA-3 Line

Page Number: 9 of 18
Lea County, NM

control spikes continued ...

Param	F	C	LCS Result	Units	Dil.	Spike Amount	Matrix Result	Rec.	Rec. Limit	RPD	RPD Limit
Param	F	C	LCS Result	Units	Dil.	Spike Amount	Matrix Result	Rec.	Rec. Limit	RPD	RPD Limit
GRO		5	15.3	mg/Kg	1	20.0	<2.32	76	70 - 130	0	20

Percent recovery is based on the spike result. RPD is based on the spike and spike duplicate result.

Surrogate	LCS Result	LCS Result	Units	Dil.	Spike Amount	LCS Rec.	LCS Rec.	Rec. Limit
Trifluorotoluene (TFT)	1.78	1.75	mg/Kg	1	2.00	89	88	70 - 130
4-Bromofluorobenzene (4-BFB)	1.66	1.68	mg/Kg	1	2.00	83	84	70 - 130

Laboratory Control Spike (LCS-1)

QC Batch: 117457
Prep Batch: 99308

Date Analyzed: 2014-11-22
QC Preparation: 2014-11-21

Analyzed By: SC
Prepared By: SC

Param	F	C	LCS Result	Units	Dil.	Spike Amount	Matrix Result	Rec.	Rec. Limit
Chloride			2600	mg/Kg	5	2500	<19.2	104	85 - 115

Percent recovery is based on the spike result. RPD is based on the spike and spike duplicate result.

Param	F	C	LCS Result	Units	Dil.	Spike Amount	Matrix Result	Rec.	Rec. Limit	RPD	RPD Limit
Chloride			2600	mg/Kg	5	2500	<19.2	104	85 - 115	0	20

Percent recovery is based on the spike result. RPD is based on the spike and spike duplicate result.

Laboratory Control Spike (LCS-1)

QC Batch: 117474
Prep Batch: 99311

Date Analyzed: 2014-11-24
QC Preparation: 2014-11-21

Analyzed By: SC
Prepared By: SC

Param	F	C	LCS Result	Units	Dil.	Spike Amount	Matrix Result	Rec.	Rec. Limit
DRO		5	252	mg/Kg	1	250	<7.41	101	70 - 130

Percent recovery is based on the spike result. RPD is based on the spike and spike duplicate result.

continued ...

control spikes continued . . .

Param	F	C	LCSD Result	Units	Dil.	Spike Amount	Matrix Result	Rec.	Rec. Limit	RPD	RPD Limit
Param	F	C	LCSD Result	Units	Dil.	Spike Amount	Matrix Result	Rec.	Rec. Limit	RPD	RPD Limit
DRO		5	246	mg/Kg	1	250	<7.41	98	70 - 130	2	20

Percent recovery is based on the spike result. RPD is based on the spike and spike duplicate result.

Surrogate	LCS Result	LCSD Result	Units	Dil.	Spike Amount	LCS Rec.	LCSD Rec.	Rec. Limit
n-Tricosane	109	109	mg/Kg	1	100	109	109	70 - 130

Matrix Spikes

Matrix Spike (MS-1) Spiked Sample: 380216

QC Batch: 117451
Prep Batch: 99299

Date Analyzed: 2014-11-23
QC Preparation: 2014-11-21

Analyzed By: AK
Prepared By: AK

Param	F	C	MS Result	Units	Dil.	Spike Amount	Matrix Result	Rec.	Rec. Limit
Benzene		5	1.73	mg/Kg	1	2.00	<0.00533	86	70 - 130
Toluene		5	1.83	mg/Kg	1	2.00	<0.00645	92	70 - 130
Ethylbenzene		5	1.94	mg/Kg	1	2.00	<0.0116	97	70 - 130
Xylene		5	5.95	mg/Kg	1	6.00	<0.00874	99	70 - 130

Percent recovery is based on the spike result. RPD is based on the spike and spike duplicate result.

Param	F	C	MSD Result	Units	Dil.	Spike Amount	Matrix Result	Rec.	Rec. Limit	RPD	RPD Limit
Benzene		5	1.72	mg/Kg	1	2.00	<0.00533	86	70 - 130	1	20
Toluene		5	1.80	mg/Kg	1	2.00	<0.00645	90	70 - 130	2	20
Ethylbenzene		5	1.96	mg/Kg	1	2.00	<0.0116	98	70 - 130	1	20
Xylene		5	5.98	mg/Kg	1	6.00	<0.00874	100	70 - 130	0	20

Percent recovery is based on the spike result. RPD is based on the spike and spike duplicate result.

Surrogate	MS Result	MSD Result	Units	Dil.	Spike Amount	MS Rec.	MSD Rec.	Rec. Limit
Trifluorotoluene (TFT)	2.14	1.97	mg/Kg	1	2	107	98	70 - 130
4-Bromofluorobenzene (4-BFB)	2.24	2.25	mg/Kg	1	2	112	112	70 - 130

Matrix Spike (MS-1) Spiked Sample: 380216

QC Batch: 117452
Prep Batch: 99299

Date Analyzed: 2014-11-23
QC Preparation: 2014-11-21

Analyzed By: AK
Prepared By: AK

Param	F	C	MS Result	Units	Dil.	Spike Amount	Matrix Result	Rec.	Rec. Limit
GRO		5	16.0	mg/Kg	1	20.0	<2.32	80	70 - 130

Percent recovery is based on the spike result. RPD is based on the spike and spike duplicate result.

continued ...

Report Date: November 24, 2014
7030714G099

Work Order: 14112142
Regency/RR Sims 10" MA-3 Line

Page Number: 12 of 18
Lea County, NM

matrix spikes continued ...

Param	F	C	MSD Result	Units	Dil.	Spike Amount	Matrix Result	Rec.	Rec. Limit	RPD	RPD Limit
Param	F	C	MSD Result	Units	Dil.	Spike Amount	Matrix Result	Rec.	Rec. Limit	RPD	RPD Limit
GRO		5	17.8	mg/Kg	1	20.0	<2.32	89	70 - 130	11	20

Percent recovery is based on the spike result. RPD is based on the spike and spike duplicate result.

Surrogate	MS Result	MSD Result	Units	Dil.	Spike Amount	MS Rec.	MSD Rec.	Rec. Limit
Trifluorotoluene (TFT)	1.75	1.80	mg/Kg	1	2	88	90	70 - 130
4-Bromofluorobenzene (4-BFB)	1.71	1.73	mg/Kg	1	2	86	86	70 - 130

Matrix Spike (MS-1) Spiked Sample: 380376

QC Batch: 117457
Prep Batch: 99308

Date Analyzed: 2014-11-22
QC Preparation: 2014-11-21

Analyzed By: SC
Prepared By: SC

Param	F	C	MS Result	Units	Dil.	Spike Amount	Matrix Result	Rec.	Rec. Limit
Chloride			15500	mg/Kg	5	2500	13000	100	78.9 - 121

Percent recovery is based on the spike result. RPD is based on the spike and spike duplicate result.

Param	F	C	MSD Result	Units	Dil.	Spike Amount	Matrix Result	Rec.	Rec. Limit	RPD	RPD Limit
Chloride			15600	mg/Kg	5	2500	13000	104	78.9 - 121	1	20

Percent recovery is based on the spike result. RPD is based on the spike and spike duplicate result.

Matrix Spike (xMS-1) Spiked Sample: 380313

QC Batch: 117474
Prep Batch: 99311

Date Analyzed: 2014-11-24
QC Preparation: 2014-11-21

Analyzed By: SC
Prepared By: SC

Param	F	C	MS Result	Units	Dil.	Spike Amount	Matrix Result	Rec.	Rec. Limit
DRO		5	232	mg/Kg	1	250	10.8	88	70 - 130

Percent recovery is based on the spike result. RPD is based on the spike and spike duplicate result.

continued ...

matrix spikes continued ...

Param	F	C	MSD Result	Units	Dil.	Spike Amount	Matrix Result	Rec.	Rec. Limit	RPD	RPD Limit
Param	F	C	MSD Result	Units	Dil.	Spike Amount	Matrix Result	Rec.	Rec. Limit	RPD	RPD Limit
DRO		5	226	mg/Kg	1	250	10.8	86	70 - 130	3	20

Percent recovery is based on the spike result. RPD is based on the spike and spike duplicate result.

Surrogate	MS Result	MSD Result	Units	Dil.	Spike Amount	MS Rec.	MSD Rec.	Rec. Limit
n-Tricosane	123	124	mg/Kg	1	100	123	124	70 - 130

Calibration Standards

Standard (CCV-2)

QC Batch: 117451

Date Analyzed: 2014-11-23

Analyzed By: AK

Param	Flag	Cert	Units	CCVs True Conc.	CCVs Found Conc.	CCVs Percent Recovery	Percent Recovery Limits	Date Analyzed
Benzene		5	mg/kg	0.100	0.0965	96	80 - 120	2014-11-23
Toluene		5	mg/kg	0.100	0.100	100	80 - 120	2014-11-23
Ethylbenzene		5	mg/kg	0.100	0.0995	100	80 - 120	2014-11-23
Xylene		5	mg/kg	0.300	0.302	101	80 - 120	2014-11-23

Standard (CCV-3)

QC Batch: 117451

Date Analyzed: 2014-11-23

Analyzed By: AK

Param	Flag	Cert	Units	CCVs True Conc.	CCVs Found Conc.	CCVs Percent Recovery	Percent Recovery Limits	Date Analyzed
Benzene		5	mg/kg	0.100	0.0949	95	80 - 120	2014-11-23
Toluene		5	mg/kg	0.100	0.0967	97	80 - 120	2014-11-23
Ethylbenzene		5	mg/kg	0.100	0.0980	98	80 - 120	2014-11-23
Xylene		5	mg/kg	0.300	0.296	99	80 - 120	2014-11-23

Standard (CCV-2)

QC Batch: 117452

Date Analyzed: 2014-11-23

Analyzed By: AK

Param	Flag	Cert	Units	CCVs True Conc.	CCVs Found Conc.	CCVs Percent Recovery	Percent Recovery Limits	Date Analyzed
GRO		5	mg/Kg	1.00	0.917	92	80 - 120	2014-11-23

Standard (CCV-3)

QC Batch: 117452

Date Analyzed: 2014-11-23

Analyzed By: AK

Report Date: November 24, 2014
7030714G099

Work Order: 14112142
Regency/RR Sims 10" MA-3 Line

Page Number: 15 of 18
Lea County, NM

Param	Flag	Cert	Units	CCVs True Conc.	CCVs Found Conc.	CCVs Percent Recovery	Percent Recovery Limits	Date Analyzed
GRO		5	mg/Kg	1.00	0.899	90	80 - 120	2014-11-23

Standard (ICV-1)

QC Batch: 117457 Date Analyzed: 2014-11-22 Analyzed By: SC

Param	Flag	Cert	Units	ICVs True Conc.	ICVs Found Conc.	ICVs Percent Recovery	Percent Recovery Limits	Date Analyzed
Chloride			mg/Kg	100	100	100	85 - 115	2014-11-22

Standard (CCV-1)

QC Batch: 117457 Date Analyzed: 2014-11-22 Analyzed By: SC

Param	Flag	Cert	Units	CCVs True Conc.	CCVs Found Conc.	CCVs Percent Recovery	Percent Recovery Limits	Date Analyzed
Chloride			mg/Kg	100	100	100	85 - 115	2014-11-22

Standard (CCV-2)

QC Batch: 117474 Date Analyzed: 2014-11-24 Analyzed By: SC

Param	Flag	Cert	Units	CCVs True Conc.	CCVs Found Conc.	CCVs Percent Recovery	Percent Recovery Limits	Date Analyzed
DRO		5	mg/Kg	250	253	101	80 - 120	2014-11-24

Standard (CCV-3)

QC Batch: 117474 Date Analyzed: 2014-11-24 Analyzed By: SC

Report Date: November 24, 2014
7030714G099

Work Order: 14112142
Regency/RR Sims 10" MA-3 Line

Page Number: 16 of 18
Lea County, NM

Param	Flag	Cert	Units	CCVs True Conc.	CCVs Found Conc.	CCVs Percent Recovery	Percent Recovery Limits	Date Analyzed
DRO		5	mg/Kg	250	263	105	80 - 120	2014-11-24

Appendix

Report Definitions

Name	Definition
MDL	Method Detection Limit
MQL	Minimum Quantitation Limit
SDL	Sample Detection Limit

Laboratory Certifications

C	Certifying Authority	Certification Number	Laboratory Location
-	NCTRCA	WFWB384444Y0909	TraceAnalysis
-	DBE	VN 20657	TraceAnalysis
-	HUB	1752439743100-86536	TraceAnalysis
-	WBE	237019	TraceAnalysis
1	PJLA	L14-93	Lubbock
2	Kansas	Kansas E-10317	Lubbock
3	LELAP	LELAP-02003	Lubbock
4	NELAP	T104704219-14-10	Lubbock
5	NELAP	T104704392-14-8	Midland
6		2014-018	Lubbock

Standard Flags

F	Description
B	Analyte detected in the corresponding method blank above the method detection limit
H	Analyzed out of hold time
J	Estimated concentration
Jb	The analyte is positively identified and the value is approximated between the SDL and MQL. Sample contains less then ten times the concentration found in the method blank. The result should be considered non-detect to the SDL.
Je	Estimated concentration exceeding calibration range.
MI1	Split peak or shoulder peak
MI2	Instrument software did not integrate
MI3	Instrument software misidentified the peak
MI4	Instrument software integrated improperly
MI5	Baseline correction
Qc	Calibration check outside of laboratory limits.
Qr	RPD outside of laboratory limits
Qs	Spike recovery outside of laboratory limits.

F	Description
Qsr	Surrogate recovery outside of laboratory limits.
U	The analyte is not detected above the SDL

Attachments

The scanned attachments will follow this page.
Please note, each attachment may consist of more than one page.

Summary Report

Thomas Franklin
APEX/Titan
2351 W. Northwest Hwy.
Suite 3321
Dallas, Tx 75220

Report Date: November 24, 2014

Work Order: 14112101



Project Location: Lea County, NM
Project Name: Regency/RR Sims 10" MA-3 Line
Project Number: 7030714G099

Sample	Description	Matrix	Date Taken	Time Taken	Date Received
380215	NW Side Wall	soil	2014-11-20	11:27	2014-11-20
380216	Bottom Hole West	soil	2014-11-20	11:27	2014-11-20
380217	SE Side Wall	soil	2014-11-20	12:12	2014-11-20
380218	Bottom Hole East	soil	2014-11-20	12:14	2014-11-20

Sample - Field Code	BTEX				TPH DRO - NEW	TPH GRO
	Benzene (mg/Kg)	Toluene (mg/Kg)	Ethylbenzene (mg/Kg)	Xylene (mg/Kg)	DRO (mg/Kg)	GRO (mg/Kg)
380215 - NW Side Wall	<0.0200	<0.0200	<0.0200	<0.0200	<50.0	<4.00
380216 - Bottom Hole West	<0.0200	<0.0200	<0.0200	<0.0200	<50.0	<4.00
380217 - SE Side Wall	<0.0200	<0.0200	<0.0200	<0.0200	<50.0	<4.00
380218 - Bottom Hole East	<0.0200	<0.0200	<0.0200	<0.0200	<50.0	<4.00

Sample: 380215 - NW Side Wall

Param	Flag	Result	Units	RL
Chloride		<20.0	mg/Kg	4

Sample: 380216 - Bottom Hole West

Param	Flag	Result	Units	RL
Chloride		99.0	mg/Kg	4

Sample: 380217 - SE Side Wall

Report Date: November 24, 2014

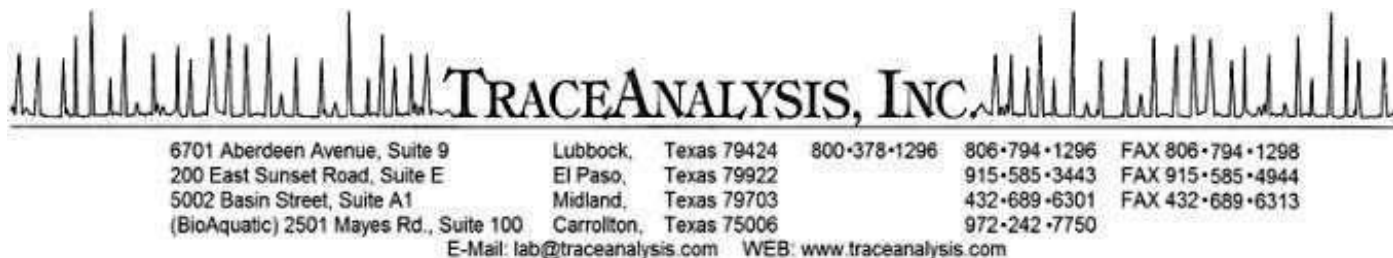
Work Order: 14112101

Page Number: 2 of 2

Param	Flag	Result	Units	RL
Chloride		<20.0	mg/Kg	4

Sample: 380218 - Bottom Hole East

Param	Flag	Result	Units	RL
Chloride		99.0	mg/Kg	4



Certifications

WBE HUB NCTRCA DBE NELAP DoD LELAP Kansas Oklahoma ISO 17025

Analytical and Quality Control Report

Thomas Franklin
APEX/Titan
2351 W. Northwest Hwy.
Suite 3321
Dallas, Tx, 75220

Report Date: November 24, 2014

Work Order: 14112101



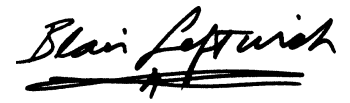
Project Location: Lea County, NM
Project Name: Regency/RR Sims 10" MA-3 Line
Project Number: 7030714G099

Enclosed are the Analytical Report and Quality Control Report for the following sample(s) submitted to TraceAnalysis, Inc.

Sample	Description	Matrix	Date Taken	Time Taken	Date Received
380215	NW Side Wall	soil	2014-11-20	11:27	2014-11-20
380216	Bottom Hole West	soil	2014-11-20	11:27	2014-11-20
380217	SE Side Wall	soil	2014-11-20	12:12	2014-11-20
380218	Bottom Hole East	soil	2014-11-20	12:14	2014-11-20

These results represent only the samples received in the laboratory. The Quality Control Report is generated on a batch basis. All information contained in this report is for the analytical batch(es) in which your sample(s) were analyzed.

This report consists of a total of 23 pages and shall not be reproduced except in its entirety, without written approval of TraceAnalysis, Inc.

A handwritten signature in black ink, reading "Blair Leftwich". The signature is written in a cursive style with a prominent horizontal stroke at the end.

Dr. Blair Leftwich, Director
James Taylor, Assistant Director
Brian Pellam, Operations Manager

Report Contents

Case Narrative	4
Analytical Report	5
Sample 380215 (NW Side Wall)	5
Sample 380216 (Bottom Hole West)	6
Sample 380217 (SE Side Wall)	7
Sample 380218 (Bottom Hole East)	9
Method Blanks	11
QC Batch 117437 - Method Blank (1)	11
QC Batch 117451 - Method Blank (1)	11
QC Batch 117452 - Method Blank (1)	11
QC Batch 117467 - Method Blank (1)	12
Laboratory Control Spikes	13
QC Batch 117437 - LCS (1)	13
QC Batch 117451 - LCS (1)	13
QC Batch 117452 - LCS (1)	14
QC Batch 117467 - LCS (1)	14
Matrix Spikes	16
QC Batch 117437 - MS (1)	16
QC Batch 117451 - MS (1)	16
QC Batch 117452 - MS (1)	17
QC Batch 117467 - xMS (1)	17
Calibration Standards	19
QC Batch 117437 - ICV (1)	19
QC Batch 117437 - CCV (2)	19
QC Batch 117451 - CCV (1)	19
QC Batch 117451 - CCV (2)	19
QC Batch 117452 - CCV (1)	20
QC Batch 117452 - CCV (2)	20
QC Batch 117467 - CCV (1)	20
QC Batch 117467 - CCV (2)	20
Appendix	22
Report Definitions	22
Laboratory Certifications	22
Standard Flags	22
Attachments	22

Case Narrative

Samples for project Regency/RR Sims 10" MA-3 Line were received by TraceAnalysis, Inc. on 2014-11-20 and assigned to work order 14112101. Samples for work order 14112101 were received intact at a temperature of 5.9 C.

Samples were analyzed for the following tests using their respective methods.

Test	Method	Prep Batch	Prep Date	QC Batch	Analysis Date
BTEX	S 8021B	99299	2014-11-21 at 14:20	117451	2014-11-23 at 08:01
Chloride (Titration)	SM 4500-Cl B	99288	2014-11-21 at 09:50	117437	2014-11-21 at 14:34
TPH DRO - NEW	S 8015 D	99286	2014-11-21 at 14:04	117467	2014-11-24 at 10:51
TPH GRO	S 8015 D	99299	2014-11-21 at 14:20	117452	2014-11-23 at 08:03

Results for these samples are reported on a wet weight basis unless data package indicates otherwise.

A matrix spike (MS) and matrix spike duplicate (MSD) sample is chosen at random from each preparation batch. The MS and MSD will indicate if a site specific matrix problem is occurring, however, it may not pertain to the samples for work order 14112101 since the sample was chosen at random. Therefore, the validity of the analytical data reported has been determined by the laboratory control sample (LCS) and the method blank (MB). These quality control measures are performed with each preparation batch to ensure data integrity.

All other exceptions associated with this report have been footnoted on the appropriate analytical page to assist in general data comprehension. Please contact the laboratory directly if there are any questions regarding this project.

Analytical Report

Sample: 380215 - NW Side Wall

Laboratory: Midland
Analysis: BTEX
QC Batch: 117451
Prep Batch: 99299

Analytical Method: S 8021B
Date Analyzed: 2014-11-23
Sample Preparation: 2014-11-21

Prep Method: S 5035
Analyzed By: AK
Prepared By: AK

Parameter	Flag	Cert	RL Result	Units	Dilution	RL
Benzene	U	1	<0.0200	mg/Kg	1	0.0200
Toluene	U	1	<0.0200	mg/Kg	1	0.0200
Ethylbenzene	U	1	<0.0200	mg/Kg	1	0.0200
Xylene	U	1	<0.0200	mg/Kg	1	0.0200

Surrogate	Flag	Cert	Result	Units	Dilution	Spike Amount	Percent Recovery	Recovery Limits
Trifluorotoluene (TFT)			2.00	mg/Kg	1	2.00	100	70 - 130
4-Bromofluorobenzene (4-BFB)			2.19	mg/Kg	1	2.00	110	70 - 130

Sample: 380215 - NW Side Wall

Laboratory: Midland
Analysis: Chloride (Titration)
QC Batch: 117437
Prep Batch: 99288

Analytical Method: SM 4500-Cl B
Date Analyzed: 2014-11-21
Sample Preparation: 2014-11-21

Prep Method: N/A
Analyzed By: AK
Prepared By: AK

Parameter	Flag	Cert	RL Result	Units	Dilution	RL
Chloride	U		<20.0	mg/Kg	5	4.00

Sample: 380215 - NW Side Wall

Laboratory: Midland
Analysis: TPH DRO - NEW
QC Batch: 117467
Prep Batch: 99286

Analytical Method: S 8015 D
Date Analyzed: 2014-11-24
Sample Preparation:

Prep Method: N/A
Analyzed By: SC
Prepared By: SC

Parameter	Flag	Cert	RL Result	Units	Dilution	RL
DRO	U	1	<50.0	mg/Kg	1	50.0

Report Date: November 24, 2014
7030714G099

Work Order: 14112101
Regency/RR Sims 10" MA-3 Line

Page Number: 6 of 23
Lea County, NM

Surrogate	Flag	Cert	Result	Units	Dilution	Spike Amount	Percent Recovery	Recovery Limits
n-Tricosane			108	mg/Kg	1	100	108	70 - 130

Sample: 380215 - NW Side Wall

Laboratory: Midland
Analysis: TPH GRO
QC Batch: 117452
Prep Batch: 99299

Analytical Method: S 8015 D
Date Analyzed: 2014-11-23
Sample Preparation: 2014-11-21

Prep Method: S 5035
Analyzed By: AK
Prepared By: AK

Parameter	Flag	Cert	RL Result	Units	Dilution	RL
GRO	U	1	<4.00	mg/Kg	1	4.00

Surrogate	Flag	Cert	Result	Units	Dilution	Spike Amount	Percent Recovery	Recovery Limits
Trifluorotoluene (TFT)			1.86	mg/Kg	1	2.00	93	70 - 130
4-Bromofluorobenzene (4-BFB)			1.66	mg/Kg	1	2.00	83	70 - 130

Sample: 380216 - Bottom Hole West

Laboratory: Midland
Analysis: BTEX
QC Batch: 117451
Prep Batch: 99299

Analytical Method: S 8021B
Date Analyzed: 2014-11-23
Sample Preparation: 2014-11-21

Prep Method: S 5035
Analyzed By: AK
Prepared By: AK

Parameter	Flag	Cert	RL Result	Units	Dilution	RL
Benzene	U	1	<0.0200	mg/Kg	1	0.0200
Toluene	U	1	<0.0200	mg/Kg	1	0.0200
Ethylbenzene	U	1	<0.0200	mg/Kg	1	0.0200
Xylene	U	1	<0.0200	mg/Kg	1	0.0200

Surrogate	Flag	Cert	Result	Units	Dilution	Spike Amount	Percent Recovery	Recovery Limits
Trifluorotoluene (TFT)			2.11	mg/Kg	1	2.00	106	70 - 130
4-Bromofluorobenzene (4-BFB)			2.22	mg/Kg	1	2.00	111	70 - 130

Report Date: November 24, 2014
7030714G099

Work Order: 14112101
Regency/RR Sims 10" MA-3 Line

Page Number: 7 of 23
Lea County, NM

Sample: 380216 - Bottom Hole West

Laboratory:	Midland		
Analysis:	Chloride (Titration)	Analytical Method:	SM 4500-Cl B
QC Batch:	117437	Date Analyzed:	2014-11-21
Prep Batch:	99288	Sample Preparation:	2014-11-21
		Prep Method:	N/A
		Analyzed By:	AK
		Prepared By:	AK

Parameter	Flag	Cert	RL Result	Units	Dilution	RL
Chloride			99.0	mg/Kg	5	4.00

Sample: 380216 - Bottom Hole West

Laboratory:	Midland		
Analysis:	TPH DRO - NEW	Analytical Method:	S 8015 D
QC Batch:	117467	Date Analyzed:	2014-11-24
Prep Batch:	99286	Sample Preparation:	
		Prep Method:	N/A
		Analyzed By:	SC
		Prepared By:	SC

Parameter	Flag	Cert	RL Result	Units	Dilution	RL
DRO	U	1	<50.0	mg/Kg	1	50.0

Surrogate	Flag	Cert	Result	Units	Dilution	Spike Amount	Percent Recovery	Recovery Limits
n-Tricosane			110	mg/Kg	1	100	110	70 - 130

Sample: 380216 - Bottom Hole West

Laboratory:	Midland		
Analysis:	TPH GRO	Analytical Method:	S 8015 D
QC Batch:	117452	Date Analyzed:	2014-11-23
Prep Batch:	99299	Sample Preparation:	2014-11-21
		Prep Method:	S 5035
		Analyzed By:	AK
		Prepared By:	AK

Parameter	Flag	Cert	RL Result	Units	Dilution	RL
GRO	U	1	<4.00	mg/Kg	1	4.00

Surrogate	Flag	Cert	Result	Units	Dilution	Spike Amount	Percent Recovery	Recovery Limits
Trifluorotoluene (TFT)			1.88	mg/Kg	1	2.00	94	70 - 130
4-Bromofluorobenzene (4-BFB)			1.66	mg/Kg	1	2.00	83	70 - 130

Report Date: November 24, 2014
7030714G099

Work Order: 14112101
Regency/RR Sims 10" MA-3 Line

Page Number: 8 of 23
Lea County, NM

Sample: 380217 - SE Side Wall

Laboratory: Midland

Analysis: BTEX

QC Batch: 117451

Prep Batch: 99299

Analytical Method: S 8021B

Date Analyzed: 2014-11-23

Sample Preparation: 2014-11-21

Prep Method: S 5035

Analyzed By: AK

Prepared By: AK

Parameter	Flag	Cert	RL Result	Units	Dilution	RL
Benzene	U	1	<0.0200	mg/Kg	1	0.0200
Toluene	U	1	<0.0200	mg/Kg	1	0.0200
Ethylbenzene	U	1	<0.0200	mg/Kg	1	0.0200
Xylene	U	1	<0.0200	mg/Kg	1	0.0200

Surrogate	Flag	Cert	Result	Units	Dilution	Spike Amount	Percent Recovery	Recovery Limits
Trifluorotoluene (TFT)			2.07	mg/Kg	1	2.00	104	70 - 130
4-Bromofluorobenzene (4-BFB)			2.20	mg/Kg	1	2.00	110	70 - 130

Sample: 380217 - SE Side Wall

Laboratory: Midland

Analysis: Chloride (Titration)

QC Batch: 117437

Prep Batch: 99288

Analytical Method: SM 4500-Cl B

Date Analyzed: 2014-11-21

Sample Preparation: 2014-11-21

Prep Method: N/A

Analyzed By: AK

Prepared By: AK

Parameter	Flag	Cert	RL Result	Units	Dilution	RL
Chloride	U		<20.0	mg/Kg	5	4.00

Sample: 380217 - SE Side Wall

Laboratory: Midland

Analysis: TPH DRO - NEW

QC Batch: 117467

Prep Batch: 99286

Analytical Method: S 8015 D

Date Analyzed: 2014-11-24

Sample Preparation:

Prep Method: N/A

Analyzed By: SC

Prepared By: SC

Parameter	Flag	Cert	RL Result	Units	Dilution	RL
DRO	U	1	<50.0	mg/Kg	1	50.0

Surrogate	Flag	Cert	Result	Units	Dilution	Spike Amount	Percent Recovery	Recovery Limits
n-Tricosane		107		mg/Kg	1	100	107	70 - 130

Report Date: November 24, 2014
7030714G099

Work Order: 14112101
Regency/RR Sims 10" MA-3 Line

Page Number: 9 of 23
Lea County, NM

Sample: 380217 - SE Side Wall

Laboratory:	Midland		
Analysis:	TPH GRO	Analytical Method:	S 8015 D
QC Batch:	117452	Date Analyzed:	2014-11-23
Prep Batch:	99299	Sample Preparation:	2014-11-21
		Prep Method:	S 5035
		Analyzed By:	AK
		Prepared By:	AK

Parameter	Flag	Cert	RL Result	Units	Dilution	RL
GRO	U	1	<4.00	mg/Kg	1	4.00

Surrogate	Flag	Cert	Result	Units	Dilution	Spike Amount	Percent Recovery	Recovery Limits
Trifluorotoluene (TFT)			1.91	mg/Kg	1	2.00	96	70 - 130
4-Bromofluorobenzene (4-BFB)			1.67	mg/Kg	1	2.00	84	70 - 130

Sample: 380218 - Bottom Hole East

Laboratory:	Midland		
Analysis:	BTEX	Analytical Method:	S 8021B
QC Batch:	117451	Date Analyzed:	2014-11-23
Prep Batch:	99299	Sample Preparation:	2014-11-21
		Prep Method:	S 5035
		Analyzed By:	AK
		Prepared By:	AK

Parameter	Flag	Cert	RL Result	Units	Dilution	RL
Benzene	U	1	<0.0200	mg/Kg	1	0.0200
Toluene	U	1	<0.0200	mg/Kg	1	0.0200
Ethylbenzene	U	1	<0.0200	mg/Kg	1	0.0200
Xylene	U	1	<0.0200	mg/Kg	1	0.0200

Surrogate	Flag	Cert	Result	Units	Dilution	Spike Amount	Percent Recovery	Recovery Limits
Trifluorotoluene (TFT)			2.12	mg/Kg	1	2.00	106	70 - 130
4-Bromofluorobenzene (4-BFB)			2.15	mg/Kg	1	2.00	108	70 - 130

Sample: 380218 - Bottom Hole East

Laboratory:	Midland		
Analysis:	Chloride (Titration)	Analytical Method:	SM 4500-Cl B
QC Batch:	117437	Date Analyzed:	2014-11-21
Prep Batch:	99288	Sample Preparation:	2014-11-21
		Prep Method:	N/A
		Analyzed By:	AK
		Prepared By:	AK

continued ...

Report Date: November 24, 2014
7030714G099

Work Order: 14112101
Regency/RR Sims 10" MA-3 Line

Page Number: 10 of 23
Lea County, NM

sample 380218 continued ...

Parameter	Flag	Cert	RL Result	Units	Dilution	RL
Parameter	Flag	Cert	RL Result	Units	Dilution	RL
Chloride			99.0	mg/Kg	5	4.00

Sample: 380218 - Bottom Hole East

Laboratory: Midland
Analysis: TPH DRO - NEW
QC Batch: 117467
Prep Batch: 99286

Analytical Method: S 8015 D
Date Analyzed: 2014-11-24
Sample Preparation:

Prep Method: N/A
Analyzed By: SC
Prepared By: SC

Parameter	Flag	Cert	RL Result	Units	Dilution	RL
DRO	U	1	<50.0	mg/Kg	1	50.0

Surrogate	Flag	Cert	Result	Units	Dilution	Spike Amount	Percent Recovery	Recovery Limits
n-Tricosane			104	mg/Kg	1	100	104	70 - 130

Sample: 380218 - Bottom Hole East

Laboratory: Midland
Analysis: TPH GRO
QC Batch: 117452
Prep Batch: 99299

Analytical Method: S 8015 D
Date Analyzed: 2014-11-23
Sample Preparation: 2014-11-21

Prep Method: S 5035
Analyzed By: AK
Prepared By: AK

Parameter	Flag	Cert	RL Result	Units	Dilution	RL
GRO	U	1	<4.00	mg/Kg	1	4.00

Surrogate	Flag	Cert	Result	Units	Dilution	Spike Amount	Percent Recovery	Recovery Limits
Trifluorotoluene (TFT)			1.85	mg/Kg	1	2.00	92	70 - 130
4-Bromofluorobenzene (4-BFB)			1.62	mg/Kg	1	2.00	81	70 - 130

Report Date: November 24, 2014
7030714G099

Work Order: 14112101
Regency/RR Sims 10" MA-3 Line

Page Number: 11 of 23
Lea County, NM

Method Blanks

Method Blank (1) QC Batch: 117437

QC Batch: 117437 Date Analyzed: 2014-11-21 Analyzed By: AK
Prep Batch: 99288 QC Preparation: 2014-11-21 Prepared By: AK

Parameter	Flag	Cert	MDL Result	Units	RL
Chloride			<3.85	mg/Kg	4

Method Blank (1) QC Batch: 117451

QC Batch: 117451 Date Analyzed: 2014-11-23 Analyzed By: AK
Prep Batch: 99299 QC Preparation: 2014-11-21 Prepared By: AK

Parameter	Flag	Cert	MDL Result	Units	RL
Benzene		1	<0.00533	mg/Kg	0.02
Toluene		1	<0.00645	mg/Kg	0.02
Ethylbenzene		1	<0.0116	mg/Kg	0.02
Xylene		1	<0.00874	mg/Kg	0.02

Surrogate	Flag	Cert	Result	Units	Dilution	Spike Amount	Percent Recovery	Recovery Limits
Trifluorotoluene (TFT)			2.10	mg/Kg	1	2.00	105	70 - 130
4-Bromofluorobenzene (4-BFB)			2.24	mg/Kg	1	2.00	112	70 - 130

Method Blank (1) QC Batch: 117452

QC Batch: 117452 Date Analyzed: 2014-11-23 Analyzed By: AK
Prep Batch: 99299 QC Preparation: 2014-11-21 Prepared By: AK

Parameter	Flag	Cert	MDL Result	Units	RL
GRO		1	<2.32	mg/Kg	4

Report Date: November 24, 2014
7030714G099

Work Order: 14112101
Regency/RR Sims 10" MA-3 Line

Page Number: 12 of 23
Lea County, NM

Surrogate	Flag	Cert	Result	Units	Dilution	Spike Amount	Percent Recovery	Recovery Limits
Trifluorotoluene (TFT)			1.91	mg/Kg	1	2.00	96	70 - 130
4-Bromofluorobenzene (4-BFB)			1.70	mg/Kg	1	2.00	85	70 - 130

Method Blank (1) QC Batch: 117467

QC Batch: 117467
Prep Batch: 99286

Date Analyzed: 2014-11-24
QC Preparation: 2014-11-21

Analyzed By: SC
Prepared By: SC

Parameter	Flag	Cert	MDL Result	Units	RL
DRO		1	<7.41	mg/Kg	50

Surrogate	Flag	Cert	Result	Units	Dilution	Spike Amount	Percent Recovery	Recovery Limits
n-Tricosane			97.7	mg/Kg	1	100	98	70 - 130

Laboratory Control Spikes

Laboratory Control Spike (LCS-1)

QC Batch: 117437
Prep Batch: 99288

Date Analyzed: 2014-11-21
QC Preparation: 2014-11-21

Analyzed By: AK
Prepared By: AK

Param	F	C	LCS Result	Units	Dil.	Spike Amount	Matrix Result	Rec.	Rec. Limit
Chloride			2660	mg/Kg	5	2500	<19.2	106	85 - 115

Percent recovery is based on the spike result. RPD is based on the spike and spike duplicate result.

Param	F	C	LCSD Result	Units	Dil.	Spike Amount	Matrix Result	Rec.	Rec. Limit	RPD	RPD Limit
Chloride			2660	mg/Kg	5	2500	<19.2	106	85 - 115	0	20

Percent recovery is based on the spike result. RPD is based on the spike and spike duplicate result.

Laboratory Control Spike (LCS-1)

QC Batch: 117451
Prep Batch: 99299

Date Analyzed: 2014-11-23
QC Preparation: 2014-11-21

Analyzed By: AK
Prepared By: AK

Param	F	C	LCS Result	Units	Dil.	Spike Amount	Matrix Result	Rec.	Rec. Limit
Benzene		1	1.71	mg/Kg	1	2.00	<0.00533	86	70 - 130
Toluene		1	1.80	mg/Kg	1	2.00	<0.00645	90	70 - 130
Ethylbenzene		1	1.97	mg/Kg	1	2.00	<0.0116	98	70 - 130
Xylene		1	5.94	mg/Kg	1	6.00	<0.00874	99	70 - 130

Percent recovery is based on the spike result. RPD is based on the spike and spike duplicate result.

Param	F	C	LCSD Result	Units	Dil.	Spike Amount	Matrix Result	Rec.	Rec. Limit	RPD	RPD Limit
Benzene		1	1.75	mg/Kg	1	2.00	<0.00533	88	70 - 130	2	20
Toluene		1	1.82	mg/Kg	1	2.00	<0.00645	91	70 - 130	1	20
Ethylbenzene		1	1.98	mg/Kg	1	2.00	<0.0116	99	70 - 130	0	20
Xylene		1	6.07	mg/Kg	1	6.00	<0.00874	101	70 - 130	2	20

Percent recovery is based on the spike result. RPD is based on the spike and spike duplicate result.

continued . . .

Report Date: November 24, 2014
7030714G099

Work Order: 14112101
Regency/RR Sims 10" MA-3 Line

Page Number: 14 of 23
Lea County, NM

control spikes continued ...

Surrogate	LCS Result	LCSD Result	Units	Dil.	Spike Amount	LCS Rec.	LCSD Rec.	Rec. Limit
Surrogate	LCS Result	LCSD Result	Units	Dil.	Spike Amount	LCS Rec.	LCSD Rec.	Rec. Limit
Trifluorotoluene (TFT)	2.05	2.00	mg/Kg	1	2.00	102	100	70 - 130
4-Bromofluorobenzene (4-BFB)	2.27	2.23	mg/Kg	1	2.00	114	112	70 - 130

Laboratory Control Spike (LCS-1)

QC Batch: 117452
Prep Batch: 99299

Date Analyzed: 2014-11-23
QC Preparation: 2014-11-21

Analyzed By: AK
Prepared By: AK

Param	F	C	LCS Result	Units	Dil.	Spike Amount	Matrix Result	Rec.	Rec. Limit
GRO		1	15.3	mg/Kg	1	20.0	<2.32	76	70 - 130

Percent recovery is based on the spike result. RPD is based on the spike and spike duplicate result.

Param	F	C	LCSD Result	Units	Dil.	Spike Amount	Matrix Result	Rec.	Rec. Limit	RPD	RPD Limit
GRO		1	15.3	mg/Kg	1	20.0	<2.32	76	70 - 130	0	20

Percent recovery is based on the spike result. RPD is based on the spike and spike duplicate result.

Surrogate	LCS Result	LCSD Result	Units	Dil.	Spike Amount	LCS Rec.	LCSD Rec.	Rec. Limit
Trifluorotoluene (TFT)	1.78	1.75	mg/Kg	1	2.00	89	88	70 - 130
4-Bromofluorobenzene (4-BFB)	1.66	1.68	mg/Kg	1	2.00	83	84	70 - 130

Laboratory Control Spike (LCS-1)

QC Batch: 117467
Prep Batch: 99286

Date Analyzed: 2014-11-24
QC Preparation: 2014-11-21

Analyzed By: SC
Prepared By: SC

Param	F	C	LCS Result	Units	Dil.	Spike Amount	Matrix Result	Rec.	Rec. Limit
DRO		1	232	mg/Kg	1	250	<7.41	93	70 - 130

Percent recovery is based on the spike result. RPD is based on the spike and spike duplicate result.

continued ...

control spikes continued . . .

Param	F	C	LCSD Result	Units	Dil.	Spike Amount	Matrix Result	Rec.	Rec. Limit	RPD	RPD Limit
Param	F	C	LCSD Result	Units	Dil.	Spike Amount	Matrix Result	Rec.	Rec. Limit	RPD	RPD Limit
DRO		1	244	mg/Kg	1	250	<7.41	98	70 - 130	5	20

Percent recovery is based on the spike result. RPD is based on the spike and spike duplicate result.

Surrogate	LCS Result	LCSD Result	Units	Dil.	Spike Amount	LCS Rec.	LCSD Rec.	Rec. Limit
n-Tricosane	104	106	mg/Kg	1	100	104	106	70 - 130

Matrix Spikes

Matrix Spike (MS-1) Spiked Sample: 380198

QC Batch: 117437
Prep Batch: 99288

Date Analyzed: 2014-11-21
QC Preparation: 2014-11-21

Analyzed By: AK
Prepared By: AK

Param	F	C	MS Result	Units	Dil.	Spike Amount	Matrix Result	Rec.	Rec. Limit
Chloride			2760	mg/Kg	5	2500	99	106	78.9 - 121

Percent recovery is based on the spike result. RPD is based on the spike and spike duplicate result.

Param	F	C	MSD Result	Units	Dil.	Spike Amount	Matrix Result	Rec.	Rec. Limit	RPD	RPD Limit
Chloride			2710	mg/Kg	5	2500	99	104	78.9 - 121	2	20

Percent recovery is based on the spike result. RPD is based on the spike and spike duplicate result.

Matrix Spike (MS-1) Spiked Sample: 380216

QC Batch: 117451
Prep Batch: 99299

Date Analyzed: 2014-11-23
QC Preparation: 2014-11-21

Analyzed By: AK
Prepared By: AK

Param	F	C	MS Result	Units	Dil.	Spike Amount	Matrix Result	Rec.	Rec. Limit
Benzene		1	1.73	mg/Kg	1	2.00	<0.00533	86	70 - 130
Toluene		1	1.83	mg/Kg	1	2.00	<0.00645	92	70 - 130
Ethylbenzene		1	1.94	mg/Kg	1	2.00	<0.0116	97	70 - 130
Xylene		1	5.95	mg/Kg	1	6.00	<0.00874	99	70 - 130

Percent recovery is based on the spike result. RPD is based on the spike and spike duplicate result.

Param	F	C	MSD Result	Units	Dil.	Spike Amount	Matrix Result	Rec.	Rec. Limit	RPD	RPD Limit
Benzene		1	1.72	mg/Kg	1	2.00	<0.00533	86	70 - 130	1	20
Toluene		1	1.80	mg/Kg	1	2.00	<0.00645	90	70 - 130	2	20
Ethylbenzene		1	1.96	mg/Kg	1	2.00	<0.0116	98	70 - 130	1	20
Xylene		1	5.98	mg/Kg	1	6.00	<0.00874	100	70 - 130	0	20

Percent recovery is based on the spike result. RPD is based on the spike and spike duplicate result.

continued ...

Report Date: November 24, 2014
7030714G099

Work Order: 14112101
Regency/RR Sims 10" MA-3 Line

Page Number: 17 of 23
Lea County, NM

matrix spikes continued ...

Surrogate	MS Result	MSD Result	Units	Dil.	Spike Amount	MS Rec.	MSD Rec.	Rec. Limit
Surrogate	MS Result	MSD Result	Units	Dil.	Spike Amount	MS Rec.	MSD Rec.	Rec. Limit
Trifluorotoluene (TFT)	2.14	1.97	mg/Kg	1	2	107	98	70 - 130
4-Bromofluorobenzene (4-BFB)	2.24	2.25	mg/Kg	1	2	112	112	70 - 130

Matrix Spike (MS-1) Spiked Sample: 380216

QC Batch: 117452
Prep Batch: 99299

Date Analyzed: 2014-11-23
QC Preparation: 2014-11-21

Analyzed By: AK
Prepared By: AK

Param	F	C	MS Result	Units	Dil.	Spike Amount	Matrix Result	Rec.	Rec. Limit
GRO		1	16.0	mg/Kg	1	20.0	<2.32	80	70 - 130

Percent recovery is based on the spike result. RPD is based on the spike and spike duplicate result.

Param	F	C	MSD Result	Units	Dil.	Spike Amount	Matrix Result	Rec.	Rec. Limit	RPD	RPD Limit
GRO		1	17.8	mg/Kg	1	20.0	<2.32	89	70 - 130	11	20

Percent recovery is based on the spike result. RPD is based on the spike and spike duplicate result.

Surrogate	MS Result	MSD Result	Units	Dil.	Spike Amount	MS Rec.	MSD Rec.	Rec. Limit
Trifluorotoluene (TFT)	1.75	1.80	mg/Kg	1	2	88	90	70 - 130
4-Bromofluorobenzene (4-BFB)	1.71	1.73	mg/Kg	1	2	86	86	70 - 130

Matrix Spike (xMS-1) Spiked Sample: 380198

QC Batch: 117467
Prep Batch: 99286

Date Analyzed: 2014-11-24
QC Preparation: 2014-11-21

Analyzed By: SC
Prepared By: SC

Param	F	C	MS Result	Units	Dil.	Spike Amount	Matrix Result	Rec.	Rec. Limit
DRO		1	259	mg/Kg	1	250	<7.41	104	70 - 130

Percent recovery is based on the spike result. RPD is based on the spike and spike duplicate result.

continued ...

Report Date: November 24, 2014
7030714G099

Work Order: 14112101
Regency/RR Sims 10" MA-3 Line

Page Number: 18 of 23
Lea County, NM

matrix spikes continued ...

Param	F	C	MSD Result	Units	Dil.	Spike Amount	Matrix Result	Rec.	Rec. Limit	RPD	RPD Limit
Param	F	C	MSD Result	Units	Dil.	Spike Amount	Matrix Result	Rec.	Rec. Limit	RPD	RPD Limit
DRO		1	237	mg/Kg	1	250	<7.41	95	70 - 130	9	20

Percent recovery is based on the spike result. RPD is based on the spike and spike duplicate result.

Surrogate	MS Result	MSD Result	Units	Dil.	Spike Amount	MS Rec.	MSD Rec.	Rec. Limit
n-Tricosane	105	102	mg/Kg	1	100	105	102	70 - 130

Calibration Standards

Standard (ICV-1)

QC Batch: 117437

Date Analyzed: 2014-11-21

Analyzed By: AK

Param	Flag	Cert	Units	ICVs True Conc.	ICVs Found Conc.	ICVs Percent Recovery	Percent Recovery Limits	Date Analyzed
Chloride			mg/Kg	100	100	100	85 - 115	2014-11-21

Standard (CCV-2)

QC Batch: 117437

Date Analyzed: 2014-11-21

Analyzed By: AK

Param	Flag	Cert	Units	CCVs True Conc.	CCVs Found Conc.	CCVs Percent Recovery	Percent Recovery Limits	Date Analyzed
Chloride			mg/Kg	100	100	100	85 - 115	2014-11-21

Standard (CCV-1)

QC Batch: 117451

Date Analyzed: 2014-11-23

Analyzed By: AK

Param	Flag	Cert	Units	CCVs True Conc.	CCVs Found Conc.	CCVs Percent Recovery	Percent Recovery Limits	Date Analyzed
Benzene		1	mg/kg	0.100	0.0982	98	80 - 120	2014-11-23
Toluene		1	mg/kg	0.100	0.0992	99	80 - 120	2014-11-23
Ethylbenzene		1	mg/kg	0.100	0.0997	100	80 - 120	2014-11-23
Xylene		1	mg/kg	0.300	0.300	100	80 - 120	2014-11-23

Standard (CCV-2)

QC Batch: 117451

Date Analyzed: 2014-11-23

Analyzed By: AK

Report Date: November 24, 2014
7030714G099

Work Order: 14112101
Regency/RR Sims 10" MA-3 Line

Page Number: 20 of 23
Lea County, NM

Param	Flag	Cert	Units	CCVs True Conc.	CCVs Found Conc.	CCVs Percent Recovery	Percent Recovery Limits	Date Analyzed
Benzene		1	mg/kg	0.100	0.0965	96	80 - 120	2014-11-23
Toluene		1	mg/kg	0.100	0.100	100	80 - 120	2014-11-23
Ethylbenzene		1	mg/kg	0.100	0.0995	100	80 - 120	2014-11-23
Xylene		1	mg/kg	0.300	0.302	101	80 - 120	2014-11-23

Standard (CCV-1)

QC Batch: 117452

Date Analyzed: 2014-11-23

Analyzed By: AK

Param	Flag	Cert	Units	CCVs True Conc.	CCVs Found Conc.	CCVs Percent Recovery	Percent Recovery Limits	Date Analyzed
GRO		1	mg/Kg	1.00	0.922	92	80 - 120	2014-11-23

Standard (CCV-2)

QC Batch: 117452

Date Analyzed: 2014-11-23

Analyzed By: AK

Param	Flag	Cert	Units	CCVs True Conc.	CCVs Found Conc.	CCVs Percent Recovery	Percent Recovery Limits	Date Analyzed
GRO		1	mg/Kg	1.00	0.917	92	80 - 120	2014-11-23

Standard (CCV-1)

QC Batch: 117467

Date Analyzed: 2014-11-24

Analyzed By: SC

Param	Flag	Cert	Units	CCVs True Conc.	CCVs Found Conc.	CCVs Percent Recovery	Percent Recovery Limits	Date Analyzed
DRO		1	mg/Kg	250	255	102	80 - 120	2014-11-24

Standard (CCV-2)

QC Batch: 117467

Date Analyzed: 2014-11-24

Analyzed By: SC

Report Date: November 24, 2014
7030714G099

Work Order: 14112101
Regency/RR Sims 10" MA-3 Line

Page Number: 21 of 23
Lea County, NM

Param	Flag	Cert	Units	CCVs True Conc.	CCVs Found Conc.	CCVs Percent Recovery	Percent Recovery Limits	Date Analyzed
DRO		1	mg/Kg	250	233	93	80 - 120	2014-11-24

Appendix

Report Definitions

Name	Definition
MDL	Method Detection Limit
MQL	Minimum Quantitation Limit
SDL	Sample Detection Limit

Laboratory Certifications

C	Certifying Authority	Certification Number	Laboratory Location
-	NCTRCA	WFWB384444Y0909	TraceAnalysis
-	DBE	VN 20657	TraceAnalysis
-	HUB	1752439743100-86536	TraceAnalysis
-	WBE	237019	TraceAnalysis
1	NELAP	T104704392-14-8	Midland

Standard Flags

F	Description
B	Analyte detected in the corresponding method blank above the method detection limit
H	Analyzed out of hold time
J	Estimated concentration
Jb	The analyte is positively identified and the value is approximated between the SDL and MQL. Sample contains less then ten times the concentration found in the method blank. The result should be considered non-detect to the SDL.
Je	Estimated concentration exceeding calibration range.
MI1	Split peak or shoulder peak
MI2	Instrument software did not integrate
MI3	Instrument software misidentified the peak
MI4	Instrument software integrated improperly
MI5	Baseline correction
Qc	Calibration check outside of laboratory limits.
Qr	RPD outside of laboratory limits
Qs	Spike recovery outside of laboratory limits.
Qsr	Surrogate recovery outside of laboratory limits.
U	The analyte is not detected above the SDL

Attachments

Report Date: November 24, 2014
7030714G099

Work Order: 14112101
Regency/RR Sims 10" MA-3 Line

Page Number: 23 of 23
Lea County, NM

The scanned attachments will follow this page.
Please note, each attachment may consist of more than one page.

Summary Report

(Corrected Report)

Thomas Franklin
APEX/Titan
2351 W. Northwest Hwy.
Suite 3321
Dallas, Tx 75220

Report Date: December 1, 2014

Work Order: 14112523



Project Location: Lea County, NM
Project Name: Regency/RR Sims 10" MA-3 Line
Project Number: 7030714G099

Sample	Description	Matrix	Date Taken	Time Taken	Date Received
380703	NW Side Wall 2	soil	2014-11-25	11:05	2014-11-25
380704	SW Side Wall	soil	2014-11-25	11:00	2014-11-25
380705	SE Side Wall 2	soil	2014-11-25	10:55	2014-11-25

Sample - Field Code	BTEX				TPH DRO - NEW	TPH GRO
	Benzene (mg/Kg)	Toluene (mg/Kg)	Ethylbenzene (mg/Kg)	Xylene (mg/Kg)	DRO (mg/Kg)	GRO (mg/Kg)
380703 - NW Side Wall 2	<0.0200	<0.0200	<0.0200	<0.0200	<50.0	<4.00
380704 - SW Side Wall	0.0831	0.0758	0.0897	0.222	<50.0	<4.00
380705 - SE Side Wall 2	<0.0200	<0.0200	<0.0200	<0.0200	<50.0	<4.00

Sample: 380703 - NW Side Wall 2

Param	Flag	Result	Units	RL
Chloride		50.0	mg/Kg	4

Sample: 380704 - SW Side Wall

Param	Flag	Result	Units	RL
Chloride		250	mg/Kg	4

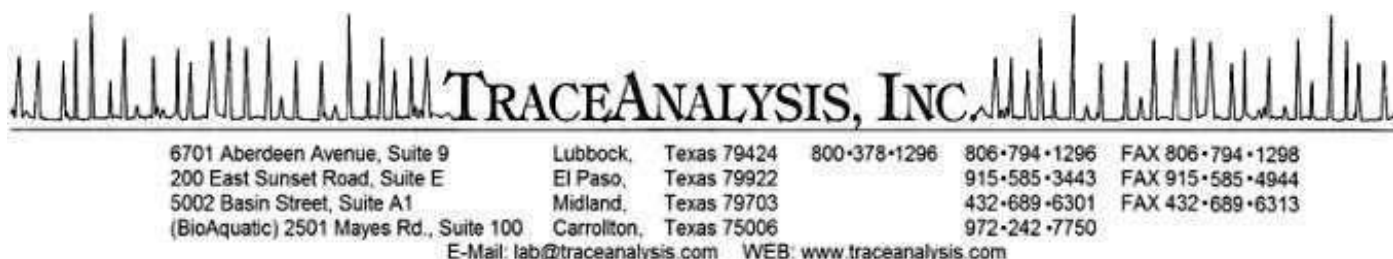
Sample: 380705 - SE Side Wall 2

Report Date: December 1, 2014

Work Order: 14112523

Page Number: 2 of 2

Param	Flag	Result	Units	RL
Chloride		<20.0	mg/Kg	4



Certifications

WBE HUB NCTRCA DBE NELAP DoD LELAP Kansas Oklahoma ISO 17025

Analytical and Quality Control Report

(Corrected Report)

Thomas Franklin
APEX/Titan
2351 W. Northwest Hwy.
Suite 3321
Dallas, Tx, 75220

Report Date: December 1, 2014

Work Order: 14112523



Project Location: Lea County, NM
Project Name: Regency/RR Sims 10" MA-3 Line
Project Number: 7030714G099

Enclosed are the Analytical Report and Quality Control Report for the following sample(s) submitted to TraceAnalysis, Inc.

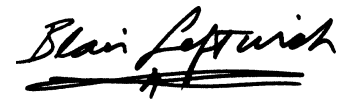
Sample	Description	Matrix	Date Taken	Time Taken	Date Received
380703	NW Side Wall 2	soil	2014-11-25	11:05	2014-11-25
380704	SW Side Wall	soil	2014-11-25	11:00	2014-11-25
380705	SE Side Wall 2	soil	2014-11-25	10:55	2014-11-25

Report Corrections (Work Order 14112523)

- 12/1/14: Corrected sample 380705 description.

These results represent only the samples received in the laboratory. The Quality Control Report is generated on a batch basis. All information contained in this report is for the analytical batch(es) in which your sample(s) were analyzed.

This report consists of a total of 20 pages and shall not be reproduced except in its entirety, without written approval of TraceAnalysis, Inc.

A handwritten signature in black ink, reading "Blair Leftwich". The signature is written in a cursive style with a prominent horizontal line underneath.

Dr. Blair Leftwich, Director
James Taylor, Assistant Director
Brian Pellam, Operations Manager

Report Contents

Case Narrative	4
Analytical Report	5
Sample 380703 (NW Side Wall 2)	5
Sample 380704 (SW Side Wall)	6
Sample 380705 (SE Side Wall 2)	7
Method Blanks	10
QC Batch 117547 - Method Blank (1)	10
QC Batch 117548 - Method Blank (1)	10
QC Batch 117550 - Method Blank (1)	10
QC Batch 117562 - Method Blank (1)	11
Laboratory Control Spikes	12
QC Batch 117547 - LCS (1)	12
QC Batch 117548 - LCS (1)	12
QC Batch 117550 - LCS (1)	13
QC Batch 117562 - LCS (1)	13
Matrix Spikes	14
QC Batch 117547 - xMS (1)	14
QC Batch 117548 - MS (1)	14
QC Batch 117550 - MS (1)	15
QC Batch 117562 - MS (1)	15
Calibration Standards	16
QC Batch 117547 - CCV (1)	16
QC Batch 117547 - CCV (2)	16
QC Batch 117548 - CCV (1)	16
QC Batch 117548 - CCV (2)	16
QC Batch 117550 - CCV (1)	17
QC Batch 117550 - CCV (2)	17
QC Batch 117562 - ICV (1)	17
QC Batch 117562 - CCV (1)	17
Appendix	19
Report Definitions	19
Laboratory Certifications	19
Standard Flags	19
Attachments	20

Case Narrative

Samples for project Regency/RR Sims 10" MA-3 Line were received by TraceAnalysis, Inc. on 2014-11-25 and assigned to work order 14112523. Samples for work order 14112523 were received intact at a temperature of 5.9 C.

Samples were analyzed for the following tests using their respective methods.

Test	Method	Prep Batch	Prep Date	QC Batch	Analysis Date
BTEX	S 8021B	99379	2014-11-25 at 15:00	117548	2014-11-26 at 08:36
Chloride (Titration)	SM 4500-Cl B	99377	2014-11-26 at 07:48	117562	2014-11-26 at 10:53
TPH DRO - NEW	S 8015 D	99378	2014-11-25 at 15:51	117547	2014-11-26 at 08:19
TPH GRO	S 8015 D	99379	2014-11-25 at 15:00	117550	2014-11-26 at 08:39

Results for these samples are reported on a wet weight basis unless data package indicates otherwise.

A matrix spike (MS) and matrix spike duplicate (MSD) sample is chosen at random from each preparation batch. The MS and MSD will indicate if a site specific matrix problem is occurring, however, it may not pertain to the samples for work order 14112523 since the sample was chosen at random. Therefore, the validity of the analytical data reported has been determined by the laboratory control sample (LCS) and the method blank (MB). These quality control measures are performed with each preparation batch to ensure data integrity.

All other exceptions associated with this report have been footnoted on the appropriate analytical page to assist in general data comprehension. Please contact the laboratory directly if there are any questions regarding this project.

Report Date: December 1, 2014
7030714G099

Work Order: 14112523
Regency/RR Sims 10" MA-3 Line

Page Number: 5 of 20
Lea County, NM

Analytical Report

Sample: 380703 - NW Side Wall 2

Laboratory:	Midland	Analytical Method:	S 8021B	Prep Method:	S 5035
Analysis:	BTEX	Date Analyzed:	2014-11-26	Analyzed By:	AK
QC Batch:	117548	Sample Preparation:	2014-11-25	Prepared By:	AK
Prep Batch:	99379				

Parameter	Flag	Cert	RL Result	Units	Dilution	RL
Benzene	U	5	<0.0200	mg/Kg	1	0.0200
Toluene	U	5	<0.0200	mg/Kg	1	0.0200
Ethylbenzene	U	5	<0.0200	mg/Kg	1	0.0200
Xylene	U	5	<0.0200	mg/Kg	1	0.0200

Surrogate	Flag	Cert	Result	Units	Dilution	Spike Amount	Percent Recovery	Recovery Limits
Trifluorotoluene (TFT)			1.84	mg/Kg	1	2.00	92	70 - 130
4-Bromofluorobenzene (4-BFB)			2.10	mg/Kg	1	2.00	105	70 - 130

Sample: 380703 - NW Side Wall 2

Laboratory:	Midland	Analytical Method:	SM 4500-Cl B	Prep Method:	N/A
Analysis:	Chloride (Titration)	Date Analyzed:	2014-11-26	Analyzed By:	AK
QC Batch:	117562	Sample Preparation:	2014-11-26	Prepared By:	AK
Prep Batch:	99377				

Parameter	Flag	Cert	RL Result	Units	Dilution	RL
Chloride			50.0	mg/Kg	5	4.00

Sample: 380703 - NW Side Wall 2

Laboratory:	Midland	Analytical Method:	S 8015 D	Prep Method:	N/A
Analysis:	TPH DRO - NEW	Date Analyzed:	2014-11-26	Analyzed By:	SC
QC Batch:	117547	Sample Preparation:	2014-11-25	Prepared By:	SC
Prep Batch:	99378				

Parameter	Flag	Cert	RL Result	Units	Dilution	RL
DRO	U	5	<50.0	mg/Kg	1	50.0

Report Date: December 1, 2014
7030714G099

Work Order: 14112523
Regency/RR Sims 10" MA-3 Line

Page Number: 6 of 20
Lea County, NM

Surrogate	Flag	Cert	Result	Units	Dilution	Spike Amount	Percent Recovery	Recovery Limits
n-Tricosane			124	mg/Kg	1	100	124	70 - 130

Sample: 380703 - NW Side Wall 2

Laboratory: Midland
Analysis: TPH GRO
QC Batch: 117550
Prep Batch: 99379

Analytical Method: S 8015 D
Date Analyzed: 2014-11-26
Sample Preparation: 2014-11-25

Prep Method: S 5035
Analyzed By: AK
Prepared By: AK

Parameter	Flag	Cert	RL Result	Units	Dilution	RL
GRO	U	5	<4.00	mg/Kg	1	4.00

Surrogate	Flag	Cert	Result	Units	Dilution	Spike Amount	Percent Recovery	Recovery Limits
Trifluorotoluene (TFT)			1.87	mg/Kg	1	2.00	94	70 - 130
4-Bromofluorobenzene (4-BFB)			1.61	mg/Kg	1	2.00	80	70 - 130

Sample: 380704 - SW Side Wall

Laboratory: Midland
Analysis: BTEX
QC Batch: 117548
Prep Batch: 99379

Analytical Method: S 8021B
Date Analyzed: 2014-11-26
Sample Preparation: 2014-11-25

Prep Method: S 5035
Analyzed By: AK
Prepared By: AK

Parameter	Flag	Cert	RL Result	Units	Dilution	RL
Benzene		5	0.0831	mg/Kg	1	0.0200
Toluene		5	0.0758	mg/Kg	1	0.0200
Ethylbenzene		5	0.0897	mg/Kg	1	0.0200
Xylene		5	0.222	mg/Kg	1	0.0200

Surrogate	Flag	Cert	Result	Units	Dilution	Spike Amount	Percent Recovery	Recovery Limits
Trifluorotoluene (TFT)			1.88	mg/Kg	1	2.00	94	70 - 130
4-Bromofluorobenzene (4-BFB)			2.11	mg/Kg	1	2.00	106	70 - 130

Report Date: December 1, 2014
7030714G099

Work Order: 14112523
Regency/RR Sims 10" MA-3 Line

Page Number: 7 of 20
Lea County, NM

Sample: 380704 - SW Side Wall

Laboratory:	Midland	Analytical Method:	SM 4500-Cl B	Prep Method:	N/A
Analysis:	Chloride (Titration)	Date Analyzed:	2014-11-26	Analyzed By:	AK
QC Batch:	117562	Sample Preparation:	2014-11-26	Prepared By:	AK
Prep Batch:	99377				

Parameter	Flag	Cert	RL Result	Units	Dilution	RL
Chloride			250	mg/Kg	5	4.00

Sample: 380704 - SW Side Wall

Laboratory:	Midland	Analytical Method:	S 8015 D	Prep Method:	N/A
Analysis:	TPH DRO - NEW	Date Analyzed:	2014-11-26	Analyzed By:	SC
QC Batch:	117547	Sample Preparation:	2014-11-25	Prepared By:	SC
Prep Batch:	99378				

Parameter	Flag	Cert	RL Result	Units	Dilution	RL
DRO	U	5	<50.0	mg/Kg	1	50.0

Surrogate	Flag	Cert	Result	Units	Dilution	Spike Amount	Percent Recovery	Recovery Limits
n-Tricosane			123	mg/Kg	1	100	123	70 - 130

Sample: 380704 - SW Side Wall

Laboratory:	Midland	Analytical Method:	S 8015 D	Prep Method:	S 5035
Analysis:	TPH GRO	Date Analyzed:	2014-11-26	Analyzed By:	AK
QC Batch:	117550	Sample Preparation:	2014-11-25	Prepared By:	AK
Prep Batch:	99379				

Parameter	Flag	Cert	RL Result	Units	Dilution	RL
GRO	U	5	<4.00	mg/Kg	1	4.00

Surrogate	Flag	Cert	Result	Units	Dilution	Spike Amount	Percent Recovery	Recovery Limits
Trifluorotoluene (TFT)			1.78	mg/Kg	1	2.00	89	70 - 130
4-Bromofluorobenzene (4-BFB)			1.68	mg/Kg	1	2.00	84	70 - 130

Report Date: December 1, 2014
7030714G099

Work Order: 14112523
Regency/RR Sims 10" MA-3 Line

Page Number: 8 of 20
Lea County, NM

Sample: 380705 - SE Side Wall 2

Laboratory: Midland

Analysis: BTEX

QC Batch: 117548

Prep Batch: 99379

Analytical Method: S 8021B

Date Analyzed: 2014-11-26

Sample Preparation: 2014-11-25

Prep Method: S 5035

Analyzed By: AK

Prepared By: AK

Parameter	Flag	Cert	RL Result	Units	Dilution	RL
Benzene	U	5	<0.0200	mg/Kg	1	0.0200
Toluene	U	5	<0.0200	mg/Kg	1	0.0200
Ethylbenzene	U	5	<0.0200	mg/Kg	1	0.0200
Xylene	U	5	<0.0200	mg/Kg	1	0.0200

Surrogate	Flag	Cert	Result	Units	Dilution	Spike Amount	Percent Recovery	Recovery Limits
Trifluorotoluene (TFT)			1.68	mg/Kg	1	2.00	84	70 - 130
4-Bromofluorobenzene (4-BFB)			2.04	mg/Kg	1	2.00	102	70 - 130

Sample: 380705 - SE Side Wall 2

Laboratory: Midland

Analysis: Chloride (Titration)

QC Batch: 117562

Prep Batch: 99377

Analytical Method: SM 4500-Cl B

Date Analyzed: 2014-11-26

Sample Preparation: 2014-11-26

Prep Method: N/A

Analyzed By: AK

Prepared By: AK

Parameter	Flag	Cert	RL Result	Units	Dilution	RL
Chloride	U		<20.0	mg/Kg	5	4.00

Sample: 380705 - SE Side Wall 2

Laboratory: Midland

Analysis: TPH DRO - NEW

QC Batch: 117547

Prep Batch: 99378

Analytical Method: S 8015 D

Date Analyzed: 2014-11-26

Sample Preparation: 2014-11-25

Prep Method: N/A

Analyzed By: SC

Prepared By: SC

Parameter	Flag	Cert	RL Result	Units	Dilution	RL
DRO	U	5	<50.0	mg/Kg	1	50.0

Surrogate	Flag	Cert	Result	Units	Dilution	Spike Amount	Percent Recovery	Recovery Limits
n-Tricosane			126	mg/Kg	1	100	126	70 - 130

Report Date: December 1, 2014
7030714G099

Work Order: 14112523
Regency/RR Sims 10" MA-3 Line

Page Number: 9 of 20
Lea County, NM

Sample: 380705 - SE Side Wall 2

Laboratory: Midland
Analysis: TPH GRO
QC Batch: 117550
Prep Batch: 99379

Analytical Method: S 8015 D
Date Analyzed: 2014-11-26
Sample Preparation: 2014-11-25

Prep Method: S 5035
Analyzed By: AK
Prepared By: AK

Parameter	Flag	Cert	RL Result	Units	Dilution	RL
GRO	U	5	<4.00	mg/Kg	1	4.00

Surrogate	Flag	Cert	Result	Units	Dilution	Spike Amount	Percent Recovery	Recovery Limits
Trifluorotoluene (TFT)			1.79	mg/Kg	1	2.00	90	70 - 130
4-Bromofluorobenzene (4-BFB)			1.56	mg/Kg	1	2.00	78	70 - 130

Report Date: December 1, 2014
7030714G099

Work Order: 14112523
Regency/RR Sims 10" MA-3 Line

Page Number: 10 of 20
Lea County, NM

Method Blanks

Method Blank (1) QC Batch: 117547

QC Batch: 117547 Date Analyzed: 2014-11-26 Analyzed By: SC
Prep Batch: 99378 QC Preparation: 2014-11-25 Prepared By: SC

Parameter	Flag	Cert	MDL Result	Units	RL
DRO		5	<7.41	mg/Kg	50

Surrogate	Flag	Cert	Result	Units	Dilution	Spike Amount	Percent Recovery	Recovery Limits
n-Tricosane			118	mg/Kg	1	100	118	70 - 130

Method Blank (1) QC Batch: 117548

QC Batch: 117548 Date Analyzed: 2014-11-26 Analyzed By: AK
Prep Batch: 99379 QC Preparation: 2014-11-25 Prepared By: AK

Parameter	Flag	Cert	MDL Result	Units	RL
Benzene		5	<0.00533	mg/Kg	0.02
Toluene		5	<0.00645	mg/Kg	0.02
Ethylbenzene		5	<0.0116	mg/Kg	0.02
Xylene		5	<0.00874	mg/Kg	0.02

Surrogate	Flag	Cert	Result	Units	Dilution	Spike Amount	Percent Recovery	Recovery Limits
Trifluorotoluene (TFT)			1.76	mg/Kg	1	2.00	88	70 - 130
4-Bromofluorobenzene (4-BFB)			2.13	mg/Kg	1	2.00	106	70 - 130

Method Blank (1) QC Batch: 117550

QC Batch: 117550 Date Analyzed: 2014-11-26 Analyzed By: AK
Prep Batch: 99379 QC Preparation: 2014-11-25 Prepared By: AK

Report Date: December 1, 2014
7030714G099

Work Order: 14112523
Regency/RR Sims 10" MA-3 Line

Page Number: 11 of 20
Lea County, NM

Parameter	Flag	Cert	MDL Result	Units	RL
GRO		5	<2.32	mg/Kg	4

Surrogate	Flag	Cert	Result	Units	Dilution	Spike Amount	Percent Recovery	Recovery Limits
Trifluorotoluene (TFT)			1.84	mg/Kg	1	2.00	92	70 - 130
4-Bromofluorobenzene (4-BFB)			1.62	mg/Kg	1	2.00	81	70 - 130

Method Blank (1) QC Batch: 117562

QC Batch: 117562
Prep Batch: 99377

Date Analyzed: 2014-11-26
QC Preparation: 2014-11-26

Analyzed By: AK
Prepared By: AK

Parameter	Flag	Cert	MDL Result	Units	RL
Chloride			<3.85	mg/Kg	4

Report Date: December 1, 2014
7030714G099

Work Order: 14112523
Regency/RR Sims 10" MA-3 Line

Page Number: 12 of 20
Lea County, NM

Laboratory Control Spikes

Laboratory Control Spike (LCS-1)

QC Batch: 117547
Prep Batch: 99378

Date Analyzed: 2014-11-26
QC Preparation: 2014-11-25

Analyzed By: SC
Prepared By: SC

Param	F	C	LCS Result	Units	Dil.	Spike Amount	Matrix Result	Rec.	Rec. Limit
DRO		5	264	mg/Kg	1	250	<7.41	106	70 - 130

Percent recovery is based on the spike result. RPD is based on the spike and spike duplicate result.

Param	F	C	LCSD Result	Units	Dil.	Spike Amount	Matrix Result	Rec.	Rec. Limit	RPD	RPD Limit
DRO		5	280	mg/Kg	1	250	<7.41	112	70 - 130	6	20

Percent recovery is based on the spike result. RPD is based on the spike and spike duplicate result.

Surrogate	LCS Result	LCSD Result	Units	Dil.	Spike Amount	LCS Rec.	LCSD Rec.	Rec. Limit
n-Tricosane	116	118	mg/Kg	1	100	116	118	70 - 130

Laboratory Control Spike (LCS-1)

QC Batch: 117548
Prep Batch: 99379

Date Analyzed: 2014-11-26
QC Preparation: 2014-11-25

Analyzed By: AK
Prepared By: AK

Param	F	C	LCS Result	Units	Dil.	Spike Amount	Matrix Result	Rec.	Rec. Limit
Benzene		5	1.70	mg/Kg	1	2.00	<0.00533	85	70 - 130
Toluene		5	1.75	mg/Kg	1	2.00	<0.00645	88	70 - 130
Ethylbenzene		5	1.84	mg/Kg	1	2.00	<0.0116	92	70 - 130
Xylene		5	5.72	mg/Kg	1	6.00	<0.00874	95	70 - 130

Percent recovery is based on the spike result. RPD is based on the spike and spike duplicate result.

Param	F	C	LCSD Result	Units	Dil.	Spike Amount	Matrix Result	Rec.	Rec. Limit	RPD	RPD Limit
Benzene		5	1.70	mg/Kg	1	2.00	<0.00533	85	70 - 130	0	20
Toluene		5	1.73	mg/Kg	1	2.00	<0.00645	86	70 - 130	1	20
Ethylbenzene		5	1.88	mg/Kg	1	2.00	<0.0116	94	70 - 130	2	20
Xylene		5	5.71	mg/Kg	1	6.00	<0.00874	95	70 - 130	0	20

Percent recovery is based on the spike result. RPD is based on the spike and spike duplicate result.

Report Date: December 1, 2014
7030714G099

Work Order: 14112523
Regency/RR Sims 10" MA-3 Line

Page Number: 13 of 20
Lea County, NM

Surrogate	LCS Result	LCSD Result	Units	Dil.	Spike Amount	LCS Rec.	LCSD Rec.	Rec. Limit
Trifluorotoluene (TFT)	1.89	1.87	mg/Kg	1	2.00	94	94	70 - 130
4-Bromofluorobenzene (4-BFB)	2.29	2.18	mg/Kg	1	2.00	114	109	70 - 130

Laboratory Control Spike (LCS-1)

QC Batch: 117550
Prep Batch: 99379

Date Analyzed: 2014-11-26
QC Preparation: 2014-11-25

Analyzed By: AK
Prepared By: AK

Param	F	C	LCS Result	Units	Dil.	Spike Amount	Matrix Result	Rec.	Rec. Limit
GRO		5	14.9	mg/Kg	1	20.0	<2.32	74	70 - 130

Percent recovery is based on the spike result. RPD is based on the spike and spike duplicate result.

Param	F	C	LCSD Result	Units	Dil.	Spike Amount	Matrix Result	Rec.	Rec. Limit	RPD	RPD Limit
GRO		5	15.3	mg/Kg	1	20.0	<2.32	76	70 - 130	3	20

Percent recovery is based on the spike result. RPD is based on the spike and spike duplicate result.

Surrogate	LCS Result	LCSD Result	Units	Dil.	Spike Amount	LCS Rec.	LCSD Rec.	Rec. Limit
Trifluorotoluene (TFT)	1.74	1.76	mg/Kg	1	2.00	87	88	70 - 130
4-Bromofluorobenzene (4-BFB)	1.70	1.65	mg/Kg	1	2.00	85	82	70 - 130

Laboratory Control Spike (LCS-1)

QC Batch: 117562
Prep Batch: 99377

Date Analyzed: 2014-11-26
QC Preparation: 2014-11-26

Analyzed By: AK
Prepared By: AK

Param	F	C	LCS Result	Units	Dil.	Spike Amount	Matrix Result	Rec.	Rec. Limit
Chloride			2600	mg/Kg	5	2500	<19.2	104	85 - 115

Percent recovery is based on the spike result. RPD is based on the spike and spike duplicate result.

Param	F	C	LCSD Result	Units	Dil.	Spike Amount	Matrix Result	Rec.	Rec. Limit	RPD	RPD Limit
Chloride			2550	mg/Kg	5	2500	<19.2	102	85 - 115	2	20

Percent recovery is based on the spike result. RPD is based on the spike and spike duplicate result.

Report Date: December 1, 2014
7030714G099

Work Order: 14112523
Regency/RR Sims 10" MA-3 Line

Page Number: 14 of 20
Lea County, NM

Matrix Spikes

Matrix Spike (xMS-1) Spiked Sample: 380374

QC Batch: 117547
Prep Batch: 99378

Date Analyzed: 2014-11-26
QC Preparation: 2014-11-25

Analyzed By: SC
Prepared By: SC

Param	F	C	MS Result	Units	Dil.	Spike Amount	Matrix Result	Rec.	Rec. Limit
DRO		5	220	mg/Kg	1	250	<7.41	88	70 - 130

Percent recovery is based on the spike result. RPD is based on the spike and spike duplicate result.

Param	F	C	MSD Result	Units	Dil.	Spike Amount	Matrix Result	Rec.	Rec. Limit	RPD	RPD Limit
DRO		5	235	mg/Kg	1	250	<7.41	94	70 - 130	7	20

Percent recovery is based on the spike result. RPD is based on the spike and spike duplicate result.

Surrogate	MS Result	MSD Result	Units	Dil.	Spike Amount	MS Rec.	MSD Rec.	Rec. Limit
n-Tricosane	123	121	mg/Kg	1	100	123	121	70 - 130

Matrix Spike (MS-1) Spiked Sample: 380429

QC Batch: 117548
Prep Batch: 99379

Date Analyzed: 2014-11-26
QC Preparation: 2014-11-25

Analyzed By: AK
Prepared By: AK

Param	F	C	MS Result	Units	Dil.	Spike Amount	Matrix Result	Rec.	Rec. Limit
Benzene		5	1.71	mg/Kg	1	2.00	<0.00533	86	70 - 130
Toluene		5	1.77	mg/Kg	1	2.00	<0.00645	88	70 - 130
Ethylbenzene		5	1.92	mg/Kg	1	2.00	<0.0116	96	70 - 130
Xylene		5	5.76	mg/Kg	1	6.00	<0.00874	96	70 - 130

Percent recovery is based on the spike result. RPD is based on the spike and spike duplicate result.

Param	F	C	MSD Result	Units	Dil.	Spike Amount	Matrix Result	Rec.	Rec. Limit	RPD	RPD Limit
Benzene		5	1.65	mg/Kg	1	2.00	<0.00533	82	70 - 130	4	20
Toluene		5	1.71	mg/Kg	1	2.00	<0.00645	86	70 - 130	3	20
Ethylbenzene		5	1.82	mg/Kg	1	2.00	<0.0116	91	70 - 130	5	20
Xylene		5	5.60	mg/Kg	1	6.00	<0.00874	93	70 - 130	3	20

Percent recovery is based on the spike result. RPD is based on the spike and spike duplicate result.

Report Date: December 1, 2014
7030714G099

Work Order: 14112523
Regency/RR Sims 10" MA-3 Line

Page Number: 15 of 20
Lea County, NM

Surrogate	MS Result	MSD Result	Units	Dil.	Spike Amount	MS Rec.	MSD Rec.	Rec. Limit
Trifluorotoluene (TFT)	1.86	1.87	mg/Kg	1	2	93	94	70 - 130
4-Bromofluorobenzene (4-BFB)	2.15	2.16	mg/Kg	1	2	108	108	70 - 130

Matrix Spike (MS-1) Spiked Sample: 380704

QC Batch: 117550
Prep Batch: 99379

Date Analyzed: 2014-11-26
QC Preparation: 2014-11-25

Analyzed By: AK
Prepared By: AK

Param	F	C	MS Result	Units	Dil.	Spike Amount	Matrix Result	Rec.	Rec. Limit
GRO		5	15.4	mg/Kg	1	20.0	<2.32	77	70 - 130

Percent recovery is based on the spike result. RPD is based on the spike and spike duplicate result.

Param	F	C	MSD Result	Units	Dil.	Spike Amount	Matrix Result	Rec.	Rec. Limit	RPD	RPD Limit
GRO		5	15.3	mg/Kg	1	20.0	<2.32	76	70 - 130	1	20

Percent recovery is based on the spike result. RPD is based on the spike and spike duplicate result.

Surrogate	MS Result	MSD Result	Units	Dil.	Spike Amount	MS Rec.	MSD Rec.	Rec. Limit
Trifluorotoluene (TFT)	1.73	1.70	mg/Kg	1	2	86	85	70 - 130
4-Bromofluorobenzene (4-BFB)	1.71	1.70	mg/Kg	1	2	86	85	70 - 130

Matrix Spike (MS-1) Spiked Sample: 380761

QC Batch: 117562
Prep Batch: 99377

Date Analyzed: 2014-11-26
QC Preparation: 2014-11-26

Analyzed By: AK
Prepared By: AK

Param	F	C	MS Result	Units	Dil.	Spike Amount	Matrix Result	Rec.	Rec. Limit
Chloride			12900	mg/Kg	5	2500	10000	116	78.9 - 121

Percent recovery is based on the spike result. RPD is based on the spike and spike duplicate result.

Param	F	C	MSD Result	Units	Dil.	Spike Amount	Matrix Result	Rec.	Rec. Limit	RPD	RPD Limit
Chloride			13000	mg/Kg	5	2500	10000	120	78.9 - 121	1	20

Percent recovery is based on the spike result. RPD is based on the spike and spike duplicate result.

Calibration Standards

Standard (CCV-1)

QC Batch: 117547

Date Analyzed: 2014-11-26

Analyzed By: SC

Param	Flag	Cert	Units	CCVs True Conc.	CCVs Found Conc.	CCVs Percent Recovery	Percent Recovery Limits	Date Analyzed
DRO		5	mg/Kg	250	252	101	80 - 120	2014-11-26

Standard (CCV-2)

QC Batch: 117547

Date Analyzed: 2014-11-26

Analyzed By: SC

Param	Flag	Cert	Units	CCVs True Conc.	CCVs Found Conc.	CCVs Percent Recovery	Percent Recovery Limits	Date Analyzed
DRO		5	mg/Kg	250	267	107	80 - 120	2014-11-26

Standard (CCV-1)

QC Batch: 117548

Date Analyzed: 2014-11-26

Analyzed By: AK

Param	Flag	Cert	Units	CCVs True Conc.	CCVs Found Conc.	CCVs Percent Recovery	Percent Recovery Limits	Date Analyzed
Benzene		5	mg/kg	0.100	0.0961	96	80 - 120	2014-11-26
Toluene		5	mg/kg	0.100	0.0970	97	80 - 120	2014-11-26
Ethylbenzene		5	mg/kg	0.100	0.0973	97	80 - 120	2014-11-26
Xylene		5	mg/kg	0.300	0.293	98	80 - 120	2014-11-26

Standard (CCV-2)

QC Batch: 117548

Date Analyzed: 2014-11-26

Analyzed By: AK

Report Date: December 1, 2014
7030714G099

Work Order: 14112523
Regency/RR Sims 10" MA-3 Line

Page Number: 17 of 20
Lea County, NM

Param	Flag	Cert	Units	CCVs True Conc.	CCVs Found Conc.	CCVs Percent Recovery	Percent Recovery Limits	Date Analyzed
Benzene		5	mg/kg	0.100	0.0963	96	80 - 120	2014-11-26
Toluene		5	mg/kg	0.100	0.0963	96	80 - 120	2014-11-26
Ethylbenzene		5	mg/kg	0.100	0.0962	96	80 - 120	2014-11-26
Xylene		5	mg/kg	0.300	0.287	96	80 - 120	2014-11-26

Standard (CCV-1)

QC Batch: 117550

Date Analyzed: 2014-11-26

Analyzed By: AK

Param	Flag	Cert	Units	CCVs True Conc.	CCVs Found Conc.	CCVs Percent Recovery	Percent Recovery Limits	Date Analyzed
GRO		5	mg/Kg	1.00	0.826	83	80 - 120	2014-11-26

Standard (CCV-2)

QC Batch: 117550

Date Analyzed: 2014-11-26

Analyzed By: AK

Param	Flag	Cert	Units	CCVs True Conc.	CCVs Found Conc.	CCVs Percent Recovery	Percent Recovery Limits	Date Analyzed
GRO		5	mg/Kg	1.00	0.856	86	80 - 120	2014-11-26

Standard (ICV-1)

QC Batch: 117562

Date Analyzed: 2014-11-26

Analyzed By: AK

Param	Flag	Cert	Units	ICVs True Conc.	ICVs Found Conc.	ICVs Percent Recovery	Percent Recovery Limits	Date Analyzed
Chloride			mg/Kg	100	102	102	85 - 115	2014-11-26

Standard (CCV-1)

QC Batch: 117562

Date Analyzed: 2014-11-26

Analyzed By: AK

Param	Flag	Cert	Units	CCVs True Conc.	CCVs Found Conc.	CCVs Percent Recovery	Percent Recovery Limits	Date Analyzed
Chloride			mg/Kg	100	98.0	98	85 - 115	2014-11-26

Appendix

Report Definitions

Name	Definition
MDL	Method Detection Limit
MQL	Minimum Quantitation Limit
SDL	Sample Detection Limit

Laboratory Certifications

C	Certifying Authority	Certification Number	Laboratory Location
-	NCTRCA	WFWB384444Y0909	TraceAnalysis
-	DBE	VN 20657	TraceAnalysis
-	HUB	1752439743100-86536	TraceAnalysis
-	WBE	237019	TraceAnalysis
1	PJLA	L14-93	Lubbock
2	Kansas	Kansas E-10317	Lubbock
3	LELAP	LELAP-02003	Lubbock
4	NELAP	T104704219-14-10	Lubbock
5	NELAP	T104704392-14-8	Midland
6		2014-018	Lubbock

Standard Flags

F	Description
B	Analyte detected in the corresponding method blank above the method detection limit
H	Analyzed out of hold time
J	Estimated concentration
Jb	The analyte is positively identified and the value is approximated between the SDL and MQL. Sample contains less then ten times the concentration found in the method blank. The result should be considered non-detect to the SDL.
Je	Estimated concentration exceeding calibration range.
MI1	Split peak or shoulder peak
MI2	Instrument software did not integrate
MI3	Instrument software misidentified the peak
MI4	Instrument software integrated improperly
MI5	Baseline correction
Qc	Calibration check outside of laboratory limits.
Qr	RPD outside of laboratory limits
Qs	Spike recovery outside of laboratory limits.

F	Description
Qsr	Surrogate recovery outside of laboratory limits.
U	The analyte is not detected above the SDL

Attachments

The scanned attachments will follow this page.
Please note, each attachment may consist of more than one page.

APPENDIX D

Manifests

**SUNDANCE SERVICES, Inc.**P.O. Box 1737 Eunice, New Mexico 88231
(575) 394-2511**TICKET No.** 325309LEASE OPERATOR/SHIPPER/COMPANY: RegencyLEASE NAME: MA-3 LineTRANSPORTER COMPANY: Parther EnergyTIME 8:15 AM/PMDATE: 11-26-14VEHICLE NO: 32GENERATOR COMPANY
MAN'S NAME: P. LittleCHARGE TO: RegencyRIG NAME
AND NUMBER**TYPE OF MATERIAL**☐ Production Water☐ Drilling Fluids☐ Rinsate☐ Tank Bottoms☒ Contaminated Soil☐ Jet Out☐ Solids☐ BS&W Content:☐ Call OutDescription: O/D

RRC or API #

C-133#

VOLUME OF MATERIAL ☐ BBLs. _____:☒ YARD 12:☐ _____

AS A CONDITION TO SUNDANCE SERVICES, INC.'S ACCEPTANCE OF THE MATERIALS SHIPPED WITH THIS JOB TICKET, OPERATOR/SHIPPER REPRESENTS AND WARRANTS THAT THE WASTE MATERIAL SHIPPED HERewith IS MATERIAL EXEMPT FROM THE RESOURCE, CONSERVATION AND RECOVERY ACT OF 1976, AS AMENDED FROM TIME TO TIME, 40 U.S.C. § 6901, et seq., THE NM HEALTH AND SAF. CODE § 361.001 et seq., AND REGULATIONS RELATED THERETO, BY VIRTUE OF THE EXEMPTION AFFORDED DRILLING FLUIDS, PRODUCED WATERS, AND OTHER WASTE ASSOCIATED WITH THE EXPLORATION, DEVELOPMENT OR PRODUCTION OF CRUDE OIL OR NATURAL GAS OR GEOTHERMAL ENERGY.

ALSO AS A CONDITION TO SUNDANCE SERVICES, INC.'S ACCEPTANCE OF THE MATERIALS SHIPPED WITH THIS JOB TICKET. TRANSPORTER REPRESENTS AND WARRANTS THAT ONLY THE MATERIAL DELIVERED BY OPERATOR/SHIPPER TO TRANSPORTER IS NOW DELIVERED BY TRANSPORTER TO SUNDANCE SERVICES, INC.'S FACILITY FOR DISPOSAL.

THIS WILL CERTIFY that the above Transporter loaded the material represented by this Transporter Statement at the above described location, and that it was tendered by the above described shipper. This will certify that no additional materials were added to this load, and that the material was delivered without incident.

DRIVER: Alexa

(SIGNATURE)

FACILITY REPRESENTATIVE: D. B. G.

(SIGNATURE)

White - Sundance

Canary - Sundance Acct #1

Pink - Transporter

Re-order from: TOTALLY SHARP ADVERTISING • 432-586-5401 • www.PromoSupermarket.com

**SUNDANCE SERVICES, Inc.**P.O. Box 1737 Eunice, New Mexico 88231
(575) 394-2511**TICKET No. 324258**LEASE OPERATOR/SHIPPER/COMPANY: KaywayLEASE NAME: DNH-3 PipelineTRANSPORTER COMPANY: Mountain EnergyTIME 8.53 AM/PMDATE: 11-20-14VEHICLE NO: 33GENERATOR COMPANY
MAN'S NAME: Phillip LittleCHARGE TO: KaywayRIG NAME
AND NUMBER**TYPE OF MATERIAL**☐ Production Water☐ Drilling Fluids☐ Rinsate☐ Tank Bottoms☒ Contaminated Soil☐ Jet Out☐ Solids☐ BS&W Content:☐ Call OutDescription: OD

RRC or API #

C-133#

VOLUME OF MATERIAL

☐ BBLs.☒ YARD12☐

AS A CONDITION TO SUNDANCE SERVICES, INC.'S ACCEPTANCE OF THE MATERIALS SHIPPED WITH THIS JOB TICKET, OPERATOR/SHIPPER REPRESENTS AND WARRANTS THAT THE WASTE MATERIAL SHIPPED HERewith IS MATERIAL EXEMPT FROM THE RESOURCE, CONSERVATION AND RECOVERY ACT OF 1976, AS AMENDED FROM TIME TO TIME, 40 U.S.C. § 6901, et seq., THE NM HEALTH AND SAF. CODE § 361.001 et seq., AND REGULATIONS RELATED THERETO, BY VIRTUE OF THE EXEMPTION AFFORDED DRILLING FLUIDS, PRODUCED WATERS, AND OTHER WASTE ASSOCIATED WITH THE EXPLORATION, DEVELOPMENT OR PRODUCTION OF CRUDE OIL OR NATURAL GAS OR GEOTHERMAL ENERGY.

ALSO AS A CONDITION TO SUNDANCE SERVICES, INC.'S ACCEPTANCE OF THE MATERIALS SHIPPED WITH THIS JOB TICKET. TRANSPORTER REPRESENTS AND WARRANTS THAT ONLY THE MATERIAL DELIVERED BY OPERATOR/SHIPPER TO TRANSPORTER IS NOW DELIVERED BY TRANSPORTER TO SUNDANCE SERVICES, INC.'S FACILITY FOR DISPOSAL.

THIS WILL CERTIFY that the above Transporter loaded the material represented by this Transporter Statement at the above described location, and that it was tendered by the above described shipper. This will certify that no additional materials were added to this load, and that the material was delivered without incident.

DRIVER: Vincent Savala

(SIGNATURE)

FACILITY REPRESENTATIVE: Stephanie Pishara

(SIGNATURE)

White - Sundance

Canary - Sundance Acct #1

Pink - Transporter

Re-order from: TOTALLY SHARP ADVERTISING • 432-586-5401 • www.PromoSupermarket.com



SUNDANCE SERVICES, Inc.

P.O. Box 1737 Eunice, New Mexico 88231
(575) 394-2511

TICKET No. 324254

LEASE OPERATOR/SHIPPER/COMPANY:

LEASE NAME:

TRANSPORTER COMPANY:

DATE:

VEHICLE NO:

GENERATOR COMPANY

MAN'S NAME:

CHARGE TO:

RIG NAME

AND NUMBER

TYPE OF MATERIAL

☐ Production Water

☐ Drilling Fluids

☐ Rinsate

☐ Tank Bottoms

☒ Contaminated Soil

☐ Jet Out

☐ Solids

☐ BS&W Content:

☐ Call Out

Description:

RRC or API #

C-133#

VOLUME OF MATERIAL

☐ BBLs.

☒ YARD

AS A CONDITION TO SUNDANCE SERVICES, INC.'S ACCEPTANCE OF THE MATERIALS SHIPPED WITH THIS JOB TICKET, OPERATOR/SHIPPER REPRESENTS AND WARRANTS THAT THE WASTE MATERIAL SHIPPED HERewith IS MATERIAL EXEMPT FROM THE RESOURCE, CONSERVATION AND RECOVERY ACT OF 1976, AS AMENDED FROM TIME TO TIME, 40 U.S.C. § 6901, et seq., THE NM HEALTH AND SAF. CODE § 361.001 et seq., AND REGULATIONS RELATED THERETO, BY VIRTUE OF THE EXEMPTION AFFORDED DRILLING FLUIDS, PRODUCED WATERS, AND OTHER WASTE ASSOCIATED WITH THE EXPLORATION, DEVELOPMENT OR PRODUCTION OF CRUDE OIL OR NATURAL GAS OR GEOTHERMAL ENERGY.

ALSO AS A CONDITION TO SUNDANCE SERVICES, INC.'S ACCEPTANCE OF THE MATERIALS SHIPPED WITH THIS JOB TICKET. TRANSPORTER REPRESENTS AND WARRANTS THAT ONLY THE MATERIAL DELIVERED BY OPERATOR/SHIPPER TO TRANSPORTER IS NOW DELIVERED BY TRANSPORTER TO SUNDANCE SERVICES, INC.'S FACILITY FOR DISPOSAL.

THIS WILL CERTIFY that the above Transporter loaded the material represented by this Transporter Statement at the above described location, and that it was tendered by the above described shipper. This will certify that no additional materials were added to this load, and that the material was delivered without incident.

DRIVER:

(SIGNATURE)

FACILITY REPRESENTATIVE:

(SIGNATURE)

White - Sundance

Canary - Sundance Acct #1

Pink - Transporter

Re-order from: TOTALLY SHARP ADVERTISING • 432-586-5401 • www.PromoSupermarket.com



SUNDANCE SERVICES, Inc.

P.O. Box 1737 Eunice, New Mexico 88231
(575) 394-2511

TICKET No. 324921

LEASE OPERATOR/SHIPPER/COMPANY:

LEASE NAME:

TRANSPORTER COMPANY:

DATE:

VEHICLE NO:

GENERATOR COMPANY
MAN'S NAME:

TIME 12:17 PM

CHARGE TO:

RIG NAME
AND NUMBER

TYPE OF MATERIAL

☐ Production Water

☐ Drilling Fluids

☐ Rinsate

☐ Tank Bottoms

☒ Contaminated Soil

☐ Jet Out

☐ Solids

☐ BS&W Content:

☐ Call Out

Description:

RRC or API #

C-133#

VOLUME OF MATERIAL

☐ BBLs.

☒ YARD

☐

AS A CONDITION TO SUNDANCE SERVICES, INC.'S ACCEPTANCE OF THE MATERIALS SHIPPED WITH THIS JOB TICKET, OPERATOR/SHIPPER REPRESENTS AND WARRANTS THAT THE WASTE MATERIAL SHIPPED HERewith IS MATERIAL EXEMPT FROM THE RESOURCE, CONSERVATION AND RECOVERY ACT OF 1976, AS AMENDED FROM TIME TO TIME, 40 U.S.C. § 6901, et seq., THE NM HEALTH AND SAF. CODE § 361.001 et seq., AND REGULATIONS RELATED THERETO, BY VIRTUE OF THE EXEMPTION AFFORDED DRILLING FLUIDS, PRODUCED WATERS, AND OTHER WASTE ASSOCIATED WITH THE EXPLORATION, DEVELOPMENT OR PRODUCTION OF CRUDE OIL OR NATURAL GAS OR GEOTHERMAL ENERGY.

ALSO AS A CONDITION TO SUNDANCE SERVICES, INC.'S ACCEPTANCE OF THE MATERIALS SHIPPED WITH THIS JOB TICKET. TRANSPORTER REPRESENTS AND WARRANTS THAT ONLY THE MATERIAL DELIVERED BY OPERATOR/SHIPPER TO TRANSPORTER IS NOW DELIVERED BY TRANSPORTER TO SUNDANCE SERVICES, INC.'S FACILITY FOR DISPOSAL.

THIS WILL CERTIFY that the above Transporter loaded the material represented by this Transporter Statement at the above described location, and that it was tendered by the above described shipper. This will certify that no additional materials were added to this load, and that the material was delivered without incident.

DRIVER:

(SIGNATURE)

FACILITY REPRESENTATIVE:

(SIGNATURE)

White - Sundance

Canary - Sundance Acct #1

Pink - Transporter

Re-order from: TOTALLY SHARP ADVERTISING • 432-586-5401 • www.PromoSupermarket.com



SUNDANCE SERVICES, Inc.

P.O. Box 1737 Eunice, New Mexico 88231
(575) 394-2511

TICKET No. 324862

LEASE OPERATOR/SHIPPER/COMPANY:

LEASE NAME:

TRANSPORTER COMPANY:

DATE:

VEHICLE NO:

GENERATOR COMPANY
MAN'S NAME:

TIME 10:17 AM/PM

CHARGE TO:

RIG NAME
AND NUMBER

TYPE OF MATERIAL

☐ Production Water

☐ Drilling Fluids

☐ Rinsate

☐ Tank Bottoms

☒ Contaminated Soil

☐ Jet Out

☐ Solids

☐ BS&W Content:

☐ Call Out

Description:

RRC or API #

C-133#

VOLUME OF MATERIAL

☐ BBLs.

☒ YARD

☐

AS A CONDITION TO SUNDANCE SERVICES, INC.'S ACCEPTANCE OF THE MATERIALS SHIPPED WITH THIS JOB TICKET, OPERATOR/SHIPPER REPRESENTS AND WARRANTS THAT THE WASTE MATERIAL SHIPPED HERewith IS MATERIAL EXEMPT FROM THE RESOURCE, CONSERVATION AND RECOVERY ACT OF 1976, AS AMENDED FROM TIME TO TIME, 40 U.S.C. § 6901, et seq., THE NM HEALTH AND SAF. CODE § 361.001 et seq., AND REGULATIONS RELATED THERETO, BY VIRTUE OF THE EXEMPTION AFFORDED DRILLING FLUIDS, PRODUCED WATERS, AND OTHER WASTE ASSOCIATED WITH THE EXPLORATION, DEVELOPMENT OR PRODUCTION OF CRUDE OIL OR NATURAL GAS OR GEOTHERMAL ENERGY.

ALSO AS A CONDITION TO SUNDANCE SERVICES, INC.'S ACCEPTANCE OF THE MATERIALS SHIPPED WITH THIS JOB TICKET. TRANSPORTER REPRESENTS AND WARRANTS THAT ONLY THE MATERIAL DELIVERED BY OPERATOR/SHIPPER TO TRANSPORTER IS NOW DELIVERED BY TRANSPORTER TO SUNDANCE SERVICES, INC.'S FACILITY FOR DISPOSAL.

THIS WILL CERTIFY that the above Transporter loaded the material represented by this Transporter Statement at the above described location, and that it was tendered by the above described shipper. This will certify that no additional materials were added to this load, and that the material was delivered without incident.

DRIVER:

(SIGNATURE)

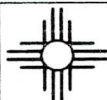
FACILITY REPRESENTATIVE:

(SIGNATURE)

White - Sundance

Canary - Sundance Acct #1

Pink - Transporter

**SUNDANCE SERVICES, Inc.**P.O. Box 1737 Eunice, New Mexico 88231
(575) 394-2511**TICKET No.** 324878

LEASE OPERATOR/SHIPPER/COMPANY: Regency
LEASE NAME: MA-3 Pipeline
TRANSPORTER COMPANY: Parthier Energy **TIME:** 10:55 AM/PM
DATE: 11-24-14 **VEHICLE NO:** 38 **GENERATOR COMPANY MAN'S NAME:** P. Little

CHARGE TO: Regency **RIG NAME AND NUMBER:** _____

TYPE OF MATERIAL

- | | | |
|---|---|-----------------------------------|
| <input type="checkbox"/> Production Water | <input type="checkbox"/> Drilling Fluids | <input type="checkbox"/> Rinsate |
| <input type="checkbox"/> Tank Bottoms | <input checked="" type="checkbox"/> Contaminated Soil | <input type="checkbox"/> Jet Out |
| <input type="checkbox"/> Solids | <input type="checkbox"/> BS&W Content: | <input type="checkbox"/> Call Out |

Description: O/D

RRC or API #

C-133#

VOLUME OF MATERIAL ☐ BBLs. _____ : ☒ YARD 12 : ☐ _____

AS A CONDITION TO SUNDANCE SERVICES, INC.'S ACCEPTANCE OF THE MATERIALS SHIPPED WITH THIS JOB TICKET, OPERATOR/SHIPPER REPRESENTS AND WARRANTS THAT THE WASTE MATERIAL SHIPPED HERewith IS MATERIAL EXEMPT FROM THE RESOURCE, CONSERVATION AND RECOVERY ACT OF 1976, AS AMENDED FROM TIME TO TIME, 40 U.S.C. § 6901, et seq., THE NM HEALTH AND SAF. CODE § 361.001 et seq., AND REGULATIONS RELATED THERETO, BY VIRTUE OF THE EXEMPTION AFFORDED DRILLING FLUIDS, PRODUCED WATERS, AND OTHER WASTE ASSOCIATED WITH THE EXPLORATION, DEVELOPMENT OR PRODUCTION OF CRUDE OIL OR NATURAL GAS OR GEOTHERMAL ENERGY.

ALSO AS A CONDITION TO SUNDANCE SERVICES, INC.'S ACCEPTANCE OF THE MATERIALS SHIPPED WITH THIS JOB TICKET. TRANSPORTER REPRESENTS AND WARRANTS THAT ONLY THE MATERIAL DELIVERED BY OPERATOR/SHIPPER TO TRANSPORTER IS NOW DELIVERED BY TRANSPORTER TO SUNDANCE SERVICES, INC.'S FACILITY FOR DISPOSAL.

THIS WILL CERTIFY that the above Transporter loaded the material represented by this Transporter Statement at the above described location, and that it was tendered by the above described shipper. This will certify that no additional materials were added to this load, and that the material was delivered without incident.

DRIVER: Vincent Savala
(SIGNATURE)

FACILITY REPRESENTATIVE: J. Sta Cruz

(SIGNATURE)

White - Sundance

Canary - Sundance Acct #1

Pink - Transporter



SUNDANCE SERVICES, Inc.

P.O. Box 1737 Eunice, New Mexico 88231
(575) 394-2511

TICKET No. 324919

LEASE OPERATOR/SHIPPER/COMPANY:

Regency

LEASE NAME:

MA-3 Line

TRANSPORTER COMPANY:

Panther Energy

TIME 7:02 AM/PM

DATE:

11-24-14

VEHICLE NO:

33

GENERATOR COMPANY
MAN'S NAME:

P. Little

CHARGE TO:

Regency

RIG NAME
AND NUMBER

TYPE OF MATERIAL

☐ Production Water

☐ Drilling Fluids

☐ Rinsate

☐ Tank Bottoms

☒ Contaminated Soil

☐ Jet Out

☐ Solids

☐ BS&W Content:

☐ Call Out

Description:

D/D

RRC or API #

C-133#

VOLUME OF MATERIAL

☐ BBLs.

:

☒ YARD

12

:

☐

AS A CONDITION TO SUNDANCE SERVICES, INC.'S ACCEPTANCE OF THE MATERIALS SHIPPED WITH THIS JOB TICKET, OPERATOR/SHIPPER REPRESENTS AND WARRANTS THAT THE WASTE MATERIAL SHIPPED HERewith IS MATERIAL EXEMPT FROM THE RESOURCE, CONSERVATION AND RECOVERY ACT OF 1976, AS AMENDED FROM TIME TO TIME, 40 U.S.C. § 6901, et seq., THE NM HEALTH AND SAF. CODE § 361.001 et seq., AND REGULATIONS RELATED THERETO, BY VIRTUE OF THE EXEMPTION AFFORDED DRILLING FLUIDS, PRODUCED WATERS, AND OTHER WASTE ASSOCIATED WITH THE EXPLORATION, DEVELOPMENT OR PRODUCTION OF CRUDE OIL OR NATURAL GAS OR GEOTHERMAL ENERGY.

ALSO AS A CONDITION TO SUNDANCE SERVICES, INC.'S ACCEPTANCE OF THE MATERIALS SHIPPED WITH THIS JOB TICKET. TRANSPORTER REPRESENTS AND WARRANTS THAT ONLY THE MATERIAL DELIVERED BY OPERATOR/SHIPPER TO TRANSPORTER IS NOW DELIVERED BY TRANSPORTER TO SUNDANCE SERVICES, INC.'S FACILITY FOR DISPOSAL.

THIS WILL CERTIFY that the above Transporter loaded the material represented by this Transporter Statement at the above described location, and that it was tendered by the above described shipper. This will certify that no additional materials were added to this load, and that the material was delivered without incident.

DRIVER:

(SIGNATURE)

Vincent Savala

FACILITY REPRESENTATIVE:

(SIGNATURE)

A. Sa Cruz

White - Sundance

Canary - Sundance Acct #1

Pink - Transporter



SUNDANCE SERVICES, Inc.

P.O. Box 1737 Eunice, New Mexico 88231
(575) 394-2511

TICKET No. 324937

LEASE OPERATOR/SHIPPER/COMPANY:

LEASE NAME:

TRANSPORTER COMPANY:

DATE:

VEHICLE NO:

GENERATOR COMPANY
MAN'S NAME:

TIME 1:36 AM/PM

CHARGE TO:

RIG NAME
AND NUMBER

TYPE OF MATERIAL

☐ Production Water

☐ Drilling Fluids

☐ Rinsate

☐ Tank Bottoms

☒ Contaminated Soil

☐ Jet Out

☐ Solids

☐ BS&W Content:

☐ Call Out

Description:

RRC or API #

C-133#

VOLUME OF MATERIAL

☐ BBLs.

:

☒ YARD

:

☐

AS A CONDITION TO SUNDANCE SERVICES, INC.'S ACCEPTANCE OF THE MATERIALS SHIPPED WITH THIS JOB TICKET, OPERATOR/SHIPPER REPRESENTS AND WARRANTS THAT THE WASTE MATERIAL SHIPPED HEREWITH IS MATERIAL EXEMPT FROM THE RESOURCE, CONSERVATION AND RECOVERY ACT OF 1976, AS AMENDED FROM TIME TO TIME, 40 U.S.C. § 6901, et seq., THE NM HEALTH AND SAF. CODE § 361.001 et seq., AND REGULATIONS RELATED THERETO, BY VIRTUE OF THE EXEMPTION AFFORDED DRILLING FLUIDS, PRODUCED WATERS, AND OTHER WASTE ASSOCIATED WITH THE EXPLORATION, DEVELOPMENT OR PRODUCTION OF CRUDE OIL OR NATURAL GAS OR GEOTHERMAL ENERGY.

ALSO AS A CONDITION TO SUNDANCE SERVICES, INC.'S ACCEPTANCE OF THE MATERIALS SHIPPED WITH THIS JOB TICKET. TRANSPORTER REPRESENTS AND WARRANTS THAT ONLY THE MATERIAL DELIVERED BY OPERATOR/SHIPPER TO TRANSPORTER IS NOW DELIVERED BY TRANSPORTER TO SUNDANCE SERVICES, INC.'S FACILITY FOR DISPOSAL.

THIS WILL CERTIFY that the above Transporter loaded the material represented by this Transporter Statement at the above described location, and that it was tendered by the above described shipper. This will certify that no additional materials were added to this load, and that the material was delivered without incident.

DRIVER:

(SIGNATURE)

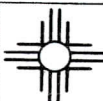
FACILITY REPRESENTATIVE:

(SIGNATURE)

White - Sundance

Canary - Sundance Acct #1

Pink - Transporter



SUNDANCE SERVICES, Inc.

P.O. Box 1737 Eunice, New Mexico 88231
(575) 394-2511

TICKET No. 324958

LEASE OPERATOR/SHIPPER/COMPANY:

LEASE NAME:

TRANSPORTER COMPANY:

DATE:

VEHICLE NO:

GENERATOR COMPANY
MAN'S NAME:

TIME 2:37 AM/PM

CHARGE TO:

RIG NAME
AND NUMBER

TYPE OF MATERIAL

☐ Production Water

☐ Drilling Fluids

☐ Rinsate

☐ Tank Bottoms

☒ Contaminated Soil

☐ Jet Out

☐ Solids

☐ BS&W Content:

☐ Call Out

Description:

RRC or API #

C-133#

VOLUME OF MATERIAL

☐ BBLs.

☒ YARD

☐

AS A CONDITION TO SUNDANCE SERVICES, INC.'S ACCEPTANCE OF THE MATERIALS SHIPPED WITH THIS JOB TICKET, OPERATOR/SHIPPER REPRESENTS AND WARRANTS THAT THE WASTE MATERIAL SHIPPED HEREWITH IS MATERIAL EXEMPT FROM THE RESOURCE, CONSERVATION AND RECOVERY ACT OF 1976, AS AMENDED FROM TIME TO TIME, 40 U.S.C. § 6901, et seq., THE NM HEALTH AND SAF. CODE § 361.001 et seq., AND REGULATIONS RELATED THERETO, BY VIRTUE OF THE EXEMPTION AFFORDED DRILLING FLUIDS, PRODUCED WATERS, AND OTHER WASTE ASSOCIATED WITH THE EXPLORATION, DEVELOPMENT OR PRODUCTION OF CRUDE OIL OR NATURAL GAS OR GEOTHERMAL ENERGY.

ALSO AS A CONDITION TO SUNDANCE SERVICES, INC.'S ACCEPTANCE OF THE MATERIALS SHIPPED WITH THIS JOB TICKET. TRANSPORTER REPRESENTS AND WARRANTS THAT ONLY THE MATERIAL DELIVERED BY OPERATOR/SHIPPER TO TRANSPORTER IS NOW DELIVERED BY TRANSPORTER TO SUNDANCE SERVICES, INC.'S FACILITY FOR DISPOSAL.

THIS WILL CERTIFY that the above Transporter loaded the material represented by this Transporter Statement at the above described location, and that it was tendered by the above described shipper. This will certify that no additional materials were added to this load, and that the material was delivered without incident.

DRIVER:

(SIGNATURE)

FACILITY REPRESENTATIVE:

(SIGNATURE)

White - Sundance

Canary - Sundance Acct #1

Pink - Transporter

**SUNDANCE SERVICES, Inc.**P.O. Box 1737 Eunice, New Mexico 88231
(575) 394-2511**TICKET No.** 324984**LEASE OPERATOR/SHIPPER/COMPANY:****LEASE NAME:****TRANSPORTER COMPANY:****DATE:****VEHICLE NO:****GENERATOR COMPANY
MAN'S NAME:****TIME** 3:51 **AM/PM****CHARGE TO:****RIG NAME
AND NUMBER****TYPE OF MATERIAL**☐ Production Water☐ Drilling Fluids☐ Rinsate☐ Tank Bottoms☒ Contaminated Soil☐ Jet Out☐ Solids☐ BS&W Content:☐ Call Out

Description: O/D

RRC or API #**C-133#****VOLUME OF MATERIAL**☐ BBLs.☒ YARD☐

AS A CONDITION TO SUNDANCE SERVICES, INC.'S ACCEPTANCE OF THE MATERIALS SHIPPED WITH THIS JOB TICKET, OPERATOR/SHIPPER REPRESENTS AND WARRANTS THAT THE WASTE MATERIAL SHIPPED HERewith IS MATERIAL EXEMPT FROM THE RESOURCE, CONSERVATION AND RECOVERY ACT OF 1976, AS AMENDED FROM TIME TO TIME, 40 U.S.C. § 6901, et seq., THE NM HEALTH AND SAF. CODE § 361.001 et seq., AND REGULATIONS RELATED THERETO, BY VIRTUE OF THE EXEMPTION AFFORDED DRILLING FLUIDS, PRODUCED WATERS, AND OTHER WASTE ASSOCIATED WITH THE EXPLORATION, DEVELOPMENT OR PRODUCTION OF CRUDE OIL OR NATURAL GAS OR GEOTHERMAL ENERGY.

ALSO AS A CONDITION TO SUNDANCE SERVICES, INC.'S ACCEPTANCE OF THE MATERIALS SHIPPED WITH THIS JOB TICKET. TRANSPORTER REPRESENTS AND WARRANTS THAT ONLY THE MATERIAL DELIVERED BY OPERATOR/SHIPPER TO TRANSPORTER IS NOW DELIVERED BY TRANSPORTER TO SUNDANCE SERVICES, INC.'S FACILITY FOR DISPOSAL.

THIS WILL CERTIFY that the above Transporter loaded the material represented by this Transporter Statement at the above described location, and that it was tendered by the above described shipper. This will certify that no additional materials were added to this load, and that the material was delivered without incident.

DRIVER:

(SIGNATURE)

FACILITY REPRESENTATIVE:

(SIGNATURE)

White - Sundance

Canary - Sundance Acct #1

Pink - Transporter



SUNDANCE SERVICES, Inc.

P.O. Box 1737 Eunice, New Mexico 88231
(575) 394-2511

TICKET No. 324860

LEASE OPERATOR/SHIPPER/COMPANY: <u>Regency</u>	
LEASE NAME: <u>MA-3 Pipeline</u>	
TRANSPORTER COMPANY: <u>Panther Energy</u>	TIME <u>8:55</u> AM/PM
DATE: <u>11-24-14</u> VEHICLE NO: <u>33</u>	GENERATOR COMPANY MAN'S NAME: <u>P. Little</u>

CHARGE TO: <u>Regency</u>	RIG NAME AND NUMBER
---------------------------	---------------------

TYPE OF MATERIAL

- | | | |
|---|---|-----------------------------------|
| <input type="checkbox"/> Production Water | <input type="checkbox"/> Drilling Fluids | <input type="checkbox"/> Rinsate |
| <input type="checkbox"/> Tank Bottoms | <input checked="" type="checkbox"/> Contaminated Soil | <input type="checkbox"/> Jet Out |
| <input type="checkbox"/> Solids | <input type="checkbox"/> BS&W Content: | <input type="checkbox"/> Call Out |

Description: D/P

RRC or API #	C-133#
--------------	--------

VOLUME OF MATERIAL	<input type="checkbox"/> BBLs.	:	<input checked="" type="checkbox"/> YARD <u>12</u>	:	<input type="checkbox"/>
--------------------	--------------------------------	---	--	---	--------------------------

AS A CONDITION TO SUNDANCE SERVICES, INC.'S ACCEPTANCE OF THE MATERIALS SHIPPED WITH THIS JOB TICKET, OPERATOR/SHIPPER REPRESENTS AND WARRANTS THAT THE WASTE MATERIAL SHIPPED HERewith IS MATERIAL EXEMPT FROM THE RESOURCE, CONSERVATION AND RECOVERY ACT OF 1976, AS AMENDED FROM TIME TO TIME, 40 U.S.C. § 6901, et seq., THE NM HEALTH AND SAF. CODE § 361.001 et seq., AND REGULATIONS RELATED THERETO, BY VIRTUE OF THE EXEMPTION AFFORDED DRILLING FLUIDS, PRODUCED WATERS, AND OTHER WASTE ASSOCIATED WITH THE EXPLORATION, DEVELOPMENT OR PRODUCTION OF CRUDE OIL OR NATURAL GAS OR GEOTHERMAL ENERGY.

ALSO AS A CONDITION TO SUNDANCE SERVICES, INC.'S ACCEPTANCE OF THE MATERIALS SHIPPED WITH THIS JOB TICKET. TRANSPORTER REPRESENTS AND WARRANTS THAT ONLY THE MATERIAL DELIVERED BY OPERATOR/SHIPPER TO TRANSPORTER IS NOW DELIVERED BY TRANSPORTER TO SUNDANCE SERVICES, INC.'S FACILITY FOR DISPOSAL.

THIS WILL CERTIFY that the above Transporter loaded the material represented by this Transporter Statement at the above described location, and that it was tendered by the above described shipper. This will certify that no additional materials were added to this load, and that the material was delivered without incident.

DRIVER: Vincent Savala
(SIGNATURE)

FACILITY REPRESENTATIVE: J. Sta Cruz
(SIGNATURE)

White - Sundance

Canary - Sundance Acct #1

Pink - Transporter

**SUNDANCE SERVICES, Inc.**P.O. Box 1737 Eunice, New Mexico 88231
(575) 394-2511**TICKET No. 324943**

LEASE OPERATOR/SHIPPER/COMPANY:

Regency

LEASE NAME:

MIA-3 Line

TRANSPORTER COMPANY:

Panther Energy

TIME 1:15 AM/PM

DATE:

11-24-14

VEHICLE NO:

32

GENERATOR COMPANY
MAN'S NAME:

P. Little

CHARGE TO:

Regency

RIG NAME
AND NUMBER**TYPE OF MATERIAL**☐ Production Water☐ Drilling Fluids☐ Rinsate☐ Tank Bottoms☒ Contaminated Soil☐ Jet Out☐ Solids☐ BS&W Content:☐ Call Out

Description:

0/0

RRC or API #

C-133#

VOLUME OF MATERIAL

☐ BBLs.

:

☒ YARD

12

:

☐

AS A CONDITION TO SUNDANCE SERVICES, INC.'S ACCEPTANCE OF THE MATERIALS SHIPPED WITH THIS JOB TICKET, OPERATOR/SHIPPER REPRESENTS AND WARRANTS THAT THE WASTE MATERIAL SHIPPED HERewith IS MATERIAL EXEMPT FROM THE RESOURCE, CONSERVATION AND RECOVERY ACT OF 1976, AS AMENDED FROM TIME TO TIME, 40 U.S.C. § 6901, et seq., THE NM HEALTH AND SAF. CODE § 361.001 et seq., AND REGULATIONS RELATED THERETO, BY VIRTUE OF THE EXEMPTION AFFORDED DRILLING FLUIDS, PRODUCED WATERS, AND OTHER WASTE ASSOCIATED WITH THE EXPLORATION, DEVELOPMENT OR PRODUCTION OF CRUDE OIL OR NATURAL GAS OR GEOTHERMAL ENERGY.

ALSO AS A CONDITION TO SUNDANCE SERVICES, INC.'S ACCEPTANCE OF THE MATERIALS SHIPPED WITH THIS JOB TICKET. TRANSPORTER REPRESENTS AND WARRANTS THAT ONLY THE MATERIAL DELIVERED BY OPERATOR/SHIPPER TO TRANSPORTER IS NOW DELIVERED BY TRANSPORTER TO SUNDANCE SERVICES, INC.'S FACILITY FOR DISPOSAL.

THIS WILL CERTIFY that the above Transporter loaded the material represented by this Transporter Statement at the above described location, and that it was tendered by the above described shipper. This will certify that no additional materials were added to this load, and that the material was delivered without incident.

DRIVER:

(SIGNATURE)

Alan Sartin

FACILITY REPRESENTATIVE:

(SIGNATURE)

D. J. Cruz

White - Sundance

Canary - Sundance Acct #1

Pink - Transporter



SUNDANCE SERVICES, Inc.

P.O. Box 1737 Eunice, New Mexico 88231
(575) 394-2511

TICKET No. 324883

LEASE OPERATOR/SHIPPER/COMPANY:

LEASE NAME:

TRANSPORTER COMPANY:

DATE:

VEHICLE NO:

GENERATOR COMPANY
MAN'S NAME:

TIME AM/PM

CHARGE TO:

RIG NAME
AND NUMBER

TYPE OF MATERIAL

☐ Production Water

☐ Drilling Fluids

☐ Rinsate

☐ Tank Bottoms

☒ Contaminated Soil

☐ Jet Out

☐ Solids

☐ BS&W Content:

☐ Call Out

Description:

RRC or API #

C-133#

VOLUME OF MATERIAL

☐ BBLs.

:

☒ YARD

:

☐

AS A CONDITION TO SUNDANCE SERVICES, INC.'S ACCEPTANCE OF THE MATERIALS SHIPPED WITH THIS JOB TICKET, OPERATOR/SHIPPER REPRESENTS AND WARRANTS THAT THE WASTE MATERIAL SHIPPED HERewith IS MATERIAL EXEMPT FROM THE RESOURCE, CONSERVATION AND RECOVERY ACT OF 1976, AS AMENDED FROM TIME TO TIME, 40 U.S.C. § 6901, et seq., THE NM HEALTH AND SAF. CODE § 361.001 et seq., AND REGULATIONS RELATED THERETO, BY VIRTUE OF THE EXEMPTION AFFORDED DRILLING FLUIDS, PRODUCED WATERS, AND OTHER WASTE ASSOCIATED WITH THE EXPLORATION, DEVELOPMENT OR PRODUCTION OF CRUDE OIL OR NATURAL GAS OR GEOTHERMAL ENERGY.

ALSO AS A CONDITION TO SUNDANCE SERVICES, INC.'S ACCEPTANCE OF THE MATERIALS SHIPPED WITH THIS JOB TICKET. TRANSPORTER REPRESENTS AND WARRANTS THAT ONLY THE MATERIAL DELIVERED BY OPERATOR/SHIPPER TO TRANSPORTER IS NOW DELIVERED BY TRANSPORTER TO SUNDANCE SERVICES, INC.'S FACILITY FOR DISPOSAL.

THIS WILL CERTIFY that the above Transporter loaded the material represented by this Transporter Statement at the above described location, and that it was tendered by the above described shipper. This will certify that no additional materials were added to this load, and that the material was delivered without incident.

DRIVER:

(SIGNATURE)

FACILITY REPRESENTATIVE:

(SIGNATURE)

White - Sundance

Canary - Sundance Acct #1

Pink - Transporter

**SUNDANCE SERVICES, Inc.**P.O. Box 1737 Eunice, New Mexico 88231
(575) 394-2511**TICKET No. 324965****LEASE OPERATOR/SHIPPER/COMPANY:****LEASE NAME:****TRANSPORTER COMPANY:****DATE:****VEHICLE NO:****TIME** 3:59 **AM/PM****GENERATOR COMPANY
MAN'S NAME****CHARGE TO:****RIG NAME
AND NUMBER****TYPE OF MATERIAL**☐ Production Water☐ Drilling Fluids☐ Rinsate☐ Tank Bottoms☒ Contaminated Soil☐ Jet Out☐ Solids☐ BS&W Content:☐ Call Out

Description: 0/D

RRC or API #**C-133#****VOLUME OF MATERIAL**☐ BBLs.☒ YARD☐

AS A CONDITION TO SUNDANCE SERVICES, INC.'S ACCEPTANCE OF THE MATERIALS SHIPPED WITH THIS JOB TICKET, OPERATOR/SHIPPER REPRESENTS AND WARRANTS THAT THE WASTE MATERIAL SHIPPED HERewith IS MATERIAL EXEMPT FROM THE RESOURCE, CONSERVATION AND RECOVERY ACT OF 1976, AS AMENDED FROM TIME TO TIME, 40 U.S.C. § 6901, et seq., THE NM HEALTH AND SAF. CODE § 361.001 et seq., AND REGULATIONS RELATED THERETO, BY VIRTUE OF THE EXEMPTION AFFORDED DRILLING FLUIDS, PRODUCED WATERS, AND OTHER WASTE ASSOCIATED WITH THE EXPLORATION, DEVELOPMENT OR PRODUCTION OF CRUDE OIL OR NATURAL GAS OR GEOTHERMAL ENERGY.

ALSO AS A CONDITION TO SUNDANCE SERVICES, INC.'S ACCEPTANCE OF THE MATERIALS SHIPPED WITH THIS JOB TICKET. TRANSPORTER REPRESENTS AND WARRANTS THAT ONLY THE MATERIAL DELIVERED BY OPERATOR/SHIPPER TO TRANSPORTER IS NOW DELIVERED BY TRANSPORTER TO SUNDANCE SERVICES, INC.'S FACILITY FOR DISPOSAL.

THIS WILL CERTIFY that the above Transporter loaded the material represented by this Transporter Statement at the above described location, and that it was tendered by the above described shipper. This will certify that no additional materials were added to this load, and that the material was delivered without incident.

DRIVER:

(SIGNATURE)

FACILITY REPRESENTATIVE:

(SIGNATURE)

White - Sundance

Canary - Sundance Acct #1

Pink - Transporter



SUNDANCE SERVICES, Inc.

P.O. Box 1737 Eunice, New Mexico 88231
(575) 394-2511

TICKET No. 324960

LEASE OPERATOR/SHIPPER/COMPANY:

LEASE NAME:

TRANSPORTER COMPANY:

DATE:

VEHICLE NO:

GENERATOR COMPANY
MAN'S NAME:

TIME 3:42 AM/PM

CHARGE TO:

RIG NAME
AND NUMBER

TYPE OF MATERIAL

☐ Production Water

☐ Drilling Fluids

☐ Rinsate

☐ Tank Bottoms

☒ Contaminated Soil

☐ Jet Out

☐ Solids

☐ BS&W Content:

☐ Call Out

Description:

RRC or API #

C-133#

VOLUME OF MATERIAL

☐ BBLs.

:

☒ YARD

:

☐

AS A CONDITION TO SUNDANCE SERVICES, INC.'S ACCEPTANCE OF THE MATERIALS SHIPPED WITH THIS JOB TICKET, OPERATOR/SHIPPER REPRESENTS AND WARRANTS THAT THE WASTE MATERIAL SHIPPED HERewith IS MATERIAL EXEMPT FROM THE RESOURCE, CONSERVATION AND RECOVERY ACT OF 1976, AS AMENDED FROM TIME TO TIME, 40 U.S.C. § 6901, et seq., THE NM HEALTH AND SAF. CODE § 361.001 et seq., AND REGULATIONS RELATED THERETO, BY VIRTUE OF THE EXEMPTION AFFORDED DRILLING FLUIDS, PRODUCED WATERS, AND OTHER WASTE ASSOCIATED WITH THE EXPLORATION, DEVELOPMENT OR PRODUCTION OF CRUDE OIL OR NATURAL GAS OR GEOTHERMAL ENERGY.

ALSO AS A CONDITION TO SUNDANCE SERVICES, INC.'S ACCEPTANCE OF THE MATERIALS SHIPPED WITH THIS JOB TICKET. TRANSPORTER REPRESENTS AND WARRANTS THAT ONLY THE MATERIAL DELIVERED BY OPERATOR/SHIPPER TO TRANSPORTER IS NOW DELIVERED BY TRANSPORTER TO SUNDANCE SERVICES, INC.'S FACILITY FOR DISPOSAL.

THIS WILL CERTIFY that the above Transporter loaded the material represented by this Transporter Statement at the above described location, and that it was tendered by the above described shipper. This will certify that no additional materials were added to this load, and that the material was delivered without incident.

DRIVER:

(SIGNATURE)

FACILITY REPRESENTATIVE:

(SIGNATURE)

White - Sundance

Canary - Sundance Acct #1

Pink - Transporter



SUNDANCE SERVICES, Inc.

P.O. Box 1737 Eunice, New Mexico 88231
(575) 394-2511

TICKET No. 324664

LEASE OPERATOR/SHIPPER/COMPANY:

Regency

LEASE NAME:

NIA-3 Line

TRANSPORTER COMPANY:

Panther Energy

TIME 9:07 AM/PM

DATE: 11-24-14

VEHICLE NO:

32

GENERATOR COMPANY
MAN'S NAME:

P. Little

CHARGE TO:

Regency

RIG NAME
AND NUMBER

TYPE OF MATERIAL

☐ Production Water

☐ Drilling Fluids

☐ Rinsate

☐ Tank Bottoms

☒ Contaminated Soil

☐ Jet Out

☐ Solids

☐ BS&W Content:

☐ Call Out

Description:

Oil

RRC or API #

C-133#

VOLUME OF MATERIAL

☐ BBLs.

:

☒ YARD

12

:

☐

AS A CONDITION TO SUNDANCE SERVICES, INC.'S ACCEPTANCE OF THE MATERIALS SHIPPED WITH THIS JOB TICKET, OPERATOR/SHIPPER REPRESENTS AND WARRANTS THAT THE WASTE MATERIAL SHIPPED HERewith IS MATERIAL EXEMPT FROM THE RESOURCE, CONSERVATION AND RECOVERY ACT OF 1976, AS AMENDED FROM TIME TO TIME, 40 U.S.C. § 6901, et seq., THE NM HEALTH AND SAF. CODE § 361.001 et seq., AND REGULATIONS RELATED THERETO, BY VIRTUE OF THE EXEMPTION AFFORDED DRILLING FLUIDS, PRODUCED WATERS, AND OTHER WASTE ASSOCIATED WITH THE EXPLORATION, DEVELOPMENT OR PRODUCTION OF CRUDE OIL OR NATURAL GAS OR GEOTHERMAL ENERGY.

ALSO AS A CONDITION TO SUNDANCE SERVICES, INC.'S ACCEPTANCE OF THE MATERIALS SHIPPED WITH THIS JOB TICKET. TRANSPORTER REPRESENTS AND WARRANTS THAT ONLY THE MATERIAL DELIVERED BY OPERATOR/SHIPPER TO TRANSPORTER IS NOW DELIVERED BY TRANSPORTER TO SUNDANCE SERVICES, INC.'S FACILITY FOR DISPOSAL.

THIS WILL CERTIFY that the above Transporter loaded the material represented by this Transporter Statement at the above described location, and that it was tendered by the above described shipper. This will certify that no additional materials were added to this load, and that the material was delivered without incident.

DRIVER:

(SIGNATURE)

Alex Juri

FACILITY REPRESENTATIVE:

(SIGNATURE)

D. Sta Cruz

White - Sundance

Canary - Sundance Acct #1

Pink - Transporter

**SUNDANCE SERVICES, Inc.**P.O. Box 1737 Eunice, New Mexico 88231
(575) 394-2511**TICKET No.** 324904**LEASE OPERATOR/SHIPPER/COMPANY:****LEASE NAME:****TRANSPORTER COMPANY:****DATE:****VEHICLE NO:****GENERATOR COMPANY
MAN'S NAME:****TIME** 11:16 **AM/PM****CHARGE TO:****RIG NAME
AND NUMBER****TYPE OF MATERIAL**☐ Production Water☐ Drilling Fluids☐ Rinsate☐ Tank Bottoms☒ Contaminated Soil☐ Jet Out☐ Solids☐ BS&W Content:☐ Call OutDescription: old**RRC or API #****C-133#****VOLUME OF MATERIAL**☐ BBLs.☒ YARD☐

AS A CONDITION TO SUNDANCE SERVICES, INC.'S ACCEPTANCE OF THE MATERIALS SHIPPED WITH THIS JOB TICKET, OPERATOR/SHIPPER REPRESENTS AND WARRANTS THAT THE WASTE MATERIAL SHIPPED HERewith IS MATERIAL EXEMPT FROM THE RESOURCE, CONSERVATION AND RECOVERY ACT OF 1976, AS AMENDED FROM TIME TO TIME, 40 U.S.C. § 6901, et seq., THE NM HEALTH AND SAF. CODE § 361.001 et seq., AND REGULATIONS RELATED THERETO, BY VIRTUE OF THE EXEMPTION AFFORDED DRILLING FLUIDS, PRODUCED WATERS, AND OTHER WASTE ASSOCIATED WITH THE EXPLORATION, DEVELOPMENT OR PRODUCTION OF CRUDE OIL OR NATURAL GAS OR GEOTHERMAL ENERGY.

ALSO AS A CONDITION TO SUNDANCE SERVICES, INC.'S ACCEPTANCE OF THE MATERIALS SHIPPED WITH THIS JOB TICKET. TRANSPORTER REPRESENTS AND WARRANTS THAT ONLY THE MATERIAL DELIVERED BY OPERATOR/SHIPPER TO TRANSPORTER IS NOW DELIVERED BY TRANSPORTER TO SUNDANCE SERVICES, INC.'S FACILITY FOR DISPOSAL.

THIS WILL CERTIFY that the above Transporter loaded the material represented by this Transporter Statement at the above described location, and that it was tendered by the above described shipper. This will certify that no additional materials were added to this load, and that the material was delivered without incident.

DRIVER:

(SIGNATURE)

FACILITY REPRESENTATIVE:

(SIGNATURE)

White - Sundance

Canary - Sundance Acct #1

Pink - Transporter



SUNDANCE SERVICES, Inc.

P.O. Box 1737 Eunice, New Mexico 88231
(575) 394-2511

TICKET No. 324432

LEASE OPERATOR/SHIPPER/COMPANY:

LEASE NAME:

TRANSPORTER COMPANY:

TIME 11:21 AM/PM

DATE:

VEHICLE NO:

GENERATOR COMPANY
MAN'S NAME:

CHARGE TO:

RIG NAME
AND NUMBER

TYPE OF MATERIAL

☐ Production Water

☐ Drilling Fluids

☐ Rinsate

☐ Tank Bottoms

☒ Contaminated Soil

☐ Jet Out

☐ Solids

☐ BS&W Content:

☐ Call Out

Description:

RRC or API #

C-133#

VOLUME OF MATERIAL

☐ BBLs.

☒ YARD

AS A CONDITION TO SUNDANCE SERVICES, INC.'S ACCEPTANCE OF THE MATERIALS SHIPPED WITH THIS JOB TICKET, OPERATOR/SHIPPER REPRESENTS AND WARRANTS THAT THE WASTE MATERIAL SHIPPED HERewith IS MATERIAL EXEMPT FROM THE RESOURCE, CONSERVATION AND RECOVERY ACT OF 1976, AS AMENDED FROM TIME TO TIME, 40 U.S.C. § 6901, et seq., THE NM HEALTH AND SAF. CODE § 361.001 et seq., AND REGULATIONS RELATED THERETO, BY VIRTUE OF THE EXEMPTION AFFORDED DRILLING FLUIDS, PRODUCED WATERS, AND OTHER WASTE ASSOCIATED WITH THE EXPLORATION, DEVELOPMENT OR PRODUCTION OF CRUDE OIL OR NATURAL GAS OR GEOTHERMAL ENERGY.

ALSO AS A CONDITION TO SUNDANCE SERVICES, INC.'S ACCEPTANCE OF THE MATERIALS SHIPPED WITH THIS JOB TICKET. TRANSPORTER REPRESENTS AND WARRANTS THAT ONLY THE MATERIAL DELIVERED BY OPERATOR/SHIPPER TO TRANSPORTER IS NOW DELIVERED BY TRANSPORTER TO SUNDANCE SERVICES, INC.'S FACILITY FOR DISPOSAL.

THIS WILL CERTIFY that the above Transporter loaded the material represented by this Transporter Statement at the above described location, and that it was tendered by the above described shipper. This will certify that no additional materials were added to this load, and that the material was delivered without incident.

DRIVER:

(SIGNATURE)

FACILITY REPRESENTATIVE:

(SIGNATURE)

White - Sundance

Canary - Sundance Acct #1

Pink - Transporter

Re-order from: TOTALLY SHARP ADVERTISING • 432-586-5401 • www.PromoSupermarket.com

**SUNDANCE SERVICES, Inc.**P.O. Box 1737 Eunice, New Mexico 88231
(575) 394-2511**TICKET No. 324418**LEASE OPERATOR/SHIPPER/COMPANY: RegencyLEASE NAME: RR Sims 10" NTA-3 PipelineTRANSPORTER COMPANY: Panther EnergyTIME 10:30 AM/PMDATE: 11-21-14VEHICLE NO: 33GENERATOR COMPANY
MAN'S NAME: Philip LittleCHARGE TO: RegencyRIG NAME
AND NUMBER**TYPE OF MATERIAL**☐ Production Water☐ Drilling Fluids☐ Rinsate☐ Tank Bottoms☒ Contaminated Soil☐ Jet Out☐ Solids☐ BS&W Content:☐ Call OutDescription: Oil

RRC or API #

C-133#

VOLUME OF MATERIAL

☐ BBLs.☒ YARD12☐

AS A CONDITION TO SUNDANCE SERVICES, INC.'S ACCEPTANCE OF THE MATERIALS SHIPPED WITH THIS JOB TICKET, OPERATOR/SHIPPER REPRESENTS AND WARRANTS THAT THE WASTE MATERIAL SHIPPED HERewith IS MATERIAL EXEMPT FROM THE RESOURCE, CONSERVATION AND RECOVERY ACT OF 1976, AS AMENDED FROM TIME TO TIME, 40 U.S.C. § 6901, et seq., THE NM HEALTH AND SAF. CODE § 361.001 et seq., AND REGULATIONS RELATED THERETO, BY VIRTUE OF THE EXEMPTION AFFORDED DRILLING FLUIDS, PRODUCED WATERS, AND OTHER WASTE ASSOCIATED WITH THE EXPLORATION, DEVELOPMENT OR PRODUCTION OF CRUDE OIL OR NATURAL GAS OR GEOTHERMAL ENERGY.

ALSO AS A CONDITION TO SUNDANCE SERVICES, INC.'S ACCEPTANCE OF THE MATERIALS SHIPPED WITH THIS JOB TICKET. TRANSPORTER REPRESENTS AND WARRANTS THAT ONLY THE MATERIAL DELIVERED BY OPERATOR/SHIPPER TO TRANSPORTER IS NOW DELIVERED BY TRANSPORTER TO SUNDANCE SERVICES, INC.'S FACILITY FOR DISPOSAL.

THIS WILL CERTIFY that the above Transporter loaded the material represented by this Transporter Statement at the above described location, and that it was tendered by the above described shipper. This will certify that no additional materials were added to this load, and that the material was delivered without incident.

DRIVER: Vincent Savala

(SIGNATURE)

FACILITY REPRESENTATIVE: D. Sta Cruz

(SIGNATURE)

White - Sundance

Canary - Sundance Acct #1

Pink - Transporter

Re-order from: TOTALLY SHARP ADVERTISING • 432-586-5401 • www.PromoSupermarket.com

**SUNDANCE SERVICES, Inc.**P.O. Box 1737 Eunice, New Mexico 88231
(575) 394-2511**TICKET No. 324419**LEASE OPERATOR/SHIPPER/COMPANY: RegencyLEASE NAME: 111A-3 PipelineTRANSPORTER COMPANY: PantherTIME 10:32 AM/PMDATE: 11-21-14 VEHICLE NO: 32GENERATOR COMPANY
MAN'S NAME: P. LittleCHARGE TO: RegencyRIG NAME
AND NUMBER**TYPE OF MATERIAL**☐ Production Water☐ Drilling Fluids☐ Rinsate☐ Tank Bottoms☒ Contaminated Soil☐ Jet Out☐ Solids☐ BS&W Content:☐ Call OutDescription: 0/D

RRC or API #

C-133#

VOLUME OF MATERIAL

☐ BBLs.☒ YARD12☐

AS A CONDITION TO SUNDANCE SERVICES, INC.'S ACCEPTANCE OF THE MATERIALS SHIPPED WITH THIS JOB TICKET, OPERATOR/SHIPPER REPRESENTS AND WARRANTS THAT THE WASTE MATERIAL SHIPPED HERewith IS MATERIAL EXEMPT FROM THE RESOURCE, CONSERVATION AND RECOVERY ACT OF 1976, AS AMENDED FROM TIME TO TIME, 40 U.S.C. § 6901, et seq., THE NM HEALTH AND SAF. CODE § 361.001 et seq., AND REGULATIONS RELATED THERETO, BY VIRTUE OF THE EXEMPTION AFFORDED DRILLING FLUIDS, PRODUCED WATERS, AND OTHER WASTE ASSOCIATED WITH THE EXPLORATION, DEVELOPMENT OR PRODUCTION OF CRUDE OIL OR NATURAL GAS OR GEOTHERMAL ENERGY.

ALSO AS A CONDITION TO SUNDANCE SERVICES, INC.'S ACCEPTANCE OF THE MATERIALS SHIPPED WITH THIS JOB TICKET. TRANSPORTER REPRESENTS AND WARRANTS THAT ONLY THE MATERIAL DELIVERED BY OPERATOR/SHIPPER TO TRANSPORTER IS NOW DELIVERED BY TRANSPORTER TO SUNDANCE SERVICES, INC.'S FACILITY FOR DISPOSAL.

THIS WILL CERTIFY that the above Transporter loaded the material represented by this Transporter Statement at the above described location, and that it was tendered by the above described shipper. This will certify that no additional materials were added to this load, and that the material was delivered without incident.

DRIVER: Abin Juri

(SIGNATURE)

FACILITY REPRESENTATIVE: D. Sla Cruz

(SIGNATURE)

White - Sundance

Canary - Sundance Acct #1

Pink - Transporter

**SUNDANCE SERVICES, Inc.**P.O. Box 1737 Eunice, New Mexico 88231
(575) 394-2511**TICKET No. 324433**

LEASE OPERATOR/SHIPPER/COMPANY:

LEASE NAME:

TRANSPORTER COMPANY:

DATE:

VEHICLE NO:

GENERATOR COMPANY
MAN'S NAME:

TIME 11:23 AM/PM

CHARGE TO:

RIG NAME
AND NUMBER**TYPE OF MATERIAL**☐ Production Water☐ Drilling Fluids☐ Rinsate☐ Tank Bottoms☒ Contaminated Soil☐ Jet Out☐ Solids☐ BS&W Content:☐ Call Out

Description:

RRC or API #

C-133#

VOLUME OF MATERIAL

☐ BBLs.☒ YARD☐

AS A CONDITION TO SUNDANCE SERVICES, INC.'S ACCEPTANCE OF THE MATERIALS SHIPPED WITH THIS JOB TICKET, OPERATOR/SHIPPER REPRESENTS AND WARRANTS THAT THE WASTE MATERIAL SHIPPED HERewith IS MATERIAL EXEMPT FROM THE RESOURCE, CONSERVATION AND RECOVERY ACT OF 1976, AS AMENDED FROM TIME TO TIME, 40 U.S.C. § 6901, et seq., THE NM HEALTH AND SAF. CODE § 361.001 et seq., AND REGULATIONS RELATED THERETO, BY VIRTUE OF THE EXEMPTION AFFORDED DRILLING FLUIDS, PRODUCED WATERS, AND OTHER WASTE ASSOCIATED WITH THE EXPLORATION, DEVELOPMENT OR PRODUCTION OF CRUDE OIL OR NATURAL GAS OR GEOTHERMAL ENERGY.

ALSO AS A CONDITION TO SUNDANCE SERVICES, INC.'S ACCEPTANCE OF THE MATERIALS SHIPPED WITH THIS JOB TICKET. TRANSPORTER REPRESENTS AND WARRANTS THAT ONLY THE MATERIAL DELIVERED BY OPERATOR/SHIPPER TO TRANSPORTER IS NOW DELIVERED BY TRANSPORTER TO SUNDANCE SERVICES, INC.'S FACILITY FOR DISPOSAL.

THIS WILL CERTIFY that the above Transporter loaded the material represented by this Transporter Statement at the above described location, and that it was tendered by the above described shipper. This will certify that no additional materials were added to this load, and that the material was delivered without incident.

DRIVER:

(SIGNATURE)

FACILITY REPRESENTATIVE:

(SIGNATURE)

White - Sundance

Canary - Sundance Acct #1

Pink - Transporter