

**Gandy Corporation
Tom 36 State Tank Battery
Site Investigation
Section 36, Township 7S, Range 31E
Chaves County, New Mexico**

April 12, 2016



Prepared for:

**Gandy Corporation
1623 South Main
Lovington, New Mexico 88260**

By:

***Safety & Environmental Solutions, Inc.
703 E. Clinton
Hobbs, New Mexico 88240
(505) 397-0510***

TABLE OF CONTENTS

I. COMPANY CONTACTS	1
II. BACKGROUND	1
III. SURFACE AND GROUND WATER	1
IV. SOILS	1
V. WORK PERFORMED	1
VI. FIGURES & APPENDICES	1

I. Company Contacts

Bob Allen	505-397-0510	ballen@sesi-nm.com
Steve Houston	432-684-4293	Stevehouston@gandycorporation.com

II. Background

SESI was contracted to perform a site investigation to determine the vertical extent of contamination at the Tom 36 State Battery. The subject area is located in Section 36, Township 7S, Range 31E in Chaves County, New Mexico.

II. Surface and Ground Water

The nearest groundwater water of record with the New Mexico State Engineer's Office is in section 26, township 07S and range 31E. The depth to water for this well is 120 feet bgs. However, there is no record of groundwater in the immediate vicinity. The average depth to water for this area is 238' bgs (Appendix A).

III. Soils

The soils in the area are predominantly sand and sandy loam.

IV. Work Performed

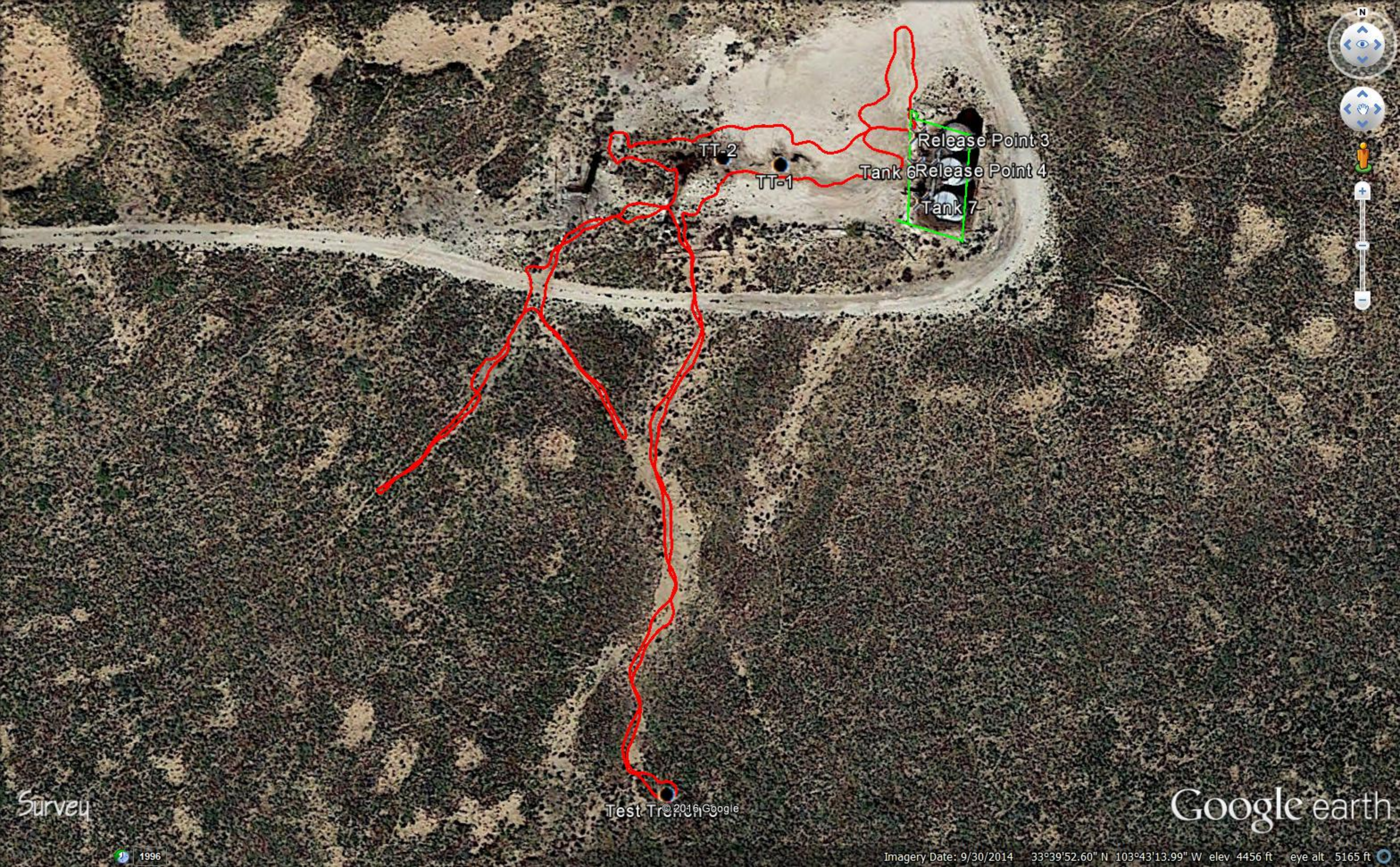
On April 11, 2016 SESI personnel, Gandy personnel together with a backhoe and operator were on site to assess the spill area at this location. Heavy hydro carbon staining on the area were present (Figure 2). The fluid had exited the pad area and formed three legs as it exited to the pasture area continuing to traverse. The location and spill area were mapped using a handheld Juno 3B (Figure 1). The spill area measured approximately 6,028.92 sq. ft. A representative soil sample was grabbed at surface where Test Trench 1 was dug. A second soil sample was retrieved and tested at 1' bgs. The results are recapped in the following table:

Date	ID	Cl ⁻	TPH
4-11-16	TT-1 Surface	2096	19
4-11-16	TT-1 @ 1'	9864	

VI. Figures & Appendices

Figure 1 – Site Plan
Figure 2 – Photo Documentation
Appendix A - Groundwater

Figure 1
Site Plan



Survey

Test Trench

Google earth



Imagery Date: 9/30/2014 33°39'52.60" N 103°43'13.99" W elev 4456 ft eye alt 5165 ft

Figure 2
Photo Documentation

Gandy
Tom 36 State Battery Location



Sign marking location



Release Point



Release Point Area



Spill Run Looking East



Spill exiting pad South side



Fluid Run Southwest

Gandy
Tom 36 State Battery Location



Spill run looking north to treater



Impacted area South side



Spill run West of tanks



Spill traverse north onto pad area



Spill Run onto pasture area



Spill run traversing south through pasture

Gandy
Tom 36 State Battery Location



Standing fluid west of pad



Removal of surface impact



Impact inside bermed area



Surface removal

Gandy
Tom 36 State Battery Location



Pasture Impact looking south



Pasture impact south of location

Appendix A

Groundwater



New Mexico Office of the State Engineer

Water Column/Average Depth to Water

(A CLW##### in the POD suffix indicates the POD has been replaced & no longer serves a water right file.)

(R=POD has been replaced,
O=orphaned,
C=the file is closed)

(quarters are 1=NW 2=NE 3=SW 4=SE)

(quarters are smallest to largest)

(NAD83 UTM in meters)

(In feet)

POD Number	POD Sub-Code	basin	County	Q 64	Q 16	Q 4	Sec	Tws	Rng	X	Y	Depth Well	Depth Water	Water Column
RA 11245 POD1			CH	3	3	1	20	07S	31E	610806	3728777*	220	180	40
RA 11251 POD1			CH	1	2	4	10	07S	31E	615240	3731841*	210	190	20
RA 11252 POD1			CH	2	4	2	10	07S	31E	615436	3732243*	210		
RA 11255 POD1			CH	2	4	4	04	07S	31E	613805	3733024*	450	350	100
RA 11256 POD1			CH	2	4	4	04	07S	31E	613805	3733024*	450	350	100
RA 11260 POD1			CH	1	2	3	26	07S	31E	616038	3727739	158	120	38

Average Depth to Water: **238 feet**

Minimum Depth: **120 feet**

Maximum Depth: **350 feet**

Record Count: 6

PLSS Search:

Township: 07S

Range: 31E

*UTM location was derived from PLSS - see Help

The data is furnished by the NMOSE/ISC and is accepted by the recipient with the expressed understanding that the OSE/ISC make no warranties, expressed or implied, concerning the accuracy, completeness, reliability, usability, or suitability for any particular purpose of the data.