

**From:** Groves, Amber  
**To:** [Lisa Builta](#); [Mark Larson](#); [Yu, Olivia, EMNRD](#); "[mymerch@penrocoil.com](mailto:mymerch@penrocoil.com)"  
**Cc:** [Gerald Forbus](#)  
**Subject:** RE: 1RP-4622 New Mexico State DE Well Notification for Soil Sample Collection  
**Date:** Tuesday, August 15, 2017 1:27:52 PM  
**Attachments:** image001.png  
image002.png  
image009.png  
image010.png

---

Thank you, Lisa. NMSLO will approve the delineation.

Thank you,

**Amber Groves**

*Remediation Specialist*  
*Field Operations Division*  
(575)392-3697  
(575)263-3209 cell  
New Mexico State Land Office  
2827 N. Dal Paso Suite 117  
Hobbs, NM 88260

.....  
**CONFIDENTIALITY NOTICE** - This e-mail transmission, including all documents, files, or previous e-mail messages attached hereto, may contain confidential and/or legally privileged information. If you are not the intended recipient, or a person responsible for delivering it to the intended recipient, you are hereby notified that you must not read this transmission and that any disclosure, copying, printing, distribution, or use of any of the information contained in and/or attached to this transmission is **STRICTLY PROHIBITED**. If you have received this transmission in error, please immediately notify the sender and delete the original transmission and its attachments without reading or saving in any manner. Thank you.

---

**From:** Lisa Builta [mailto:[lisab@kobutler.com](mailto:lisab@kobutler.com)]  
**Sent:** Tuesday, August 15, 2017 9:28 AM  
**To:** Groves, Amber <[agroves@slo.state.nm.us](mailto:agroves@slo.state.nm.us)>; Mark Larson <[Mark@laenvironmental.com](mailto:Mark@laenvironmental.com)>; 'Yu, Olivia, EMNRD' <[Olivia.Yu@state.nm.us](mailto:Olivia.Yu@state.nm.us)>; 'mymerch@penrocoil.com' <[mymerch@penrocoil.com](mailto:mymerch@penrocoil.com)>  
**Cc:** Gerald Forbus <[gforbus@laenvironmental.com](mailto:gforbus@laenvironmental.com)>  
**Subject:** RE: 1RP-4622 New Mexico State DE Well Notification for Soil Sample Collection

All;

Please be advised that Kevin O. Butler & Associates, Inc. confirms that this site will be fully delineated as required by OCD/SLO.

*Thank you,*

Lisa Builta

Director of Administration



Phone: (432) 682-1178

Mobile: (432) 599-2025

Fax: (432) 687-5725

[lisab@KOButler.com](mailto:lisab@KOButler.com)

*The information contained in this e-mail is strictly confidential and for the intended use of the addressee only. Any disclosure, use or copying of the information by anyone other than the intended recipient is prohibited. If you have received this message in error, please notify the sender immediately by return e-mail. Kevin O. Butler & Associates, Inc. has taken every reasonable precaution to ensure that any attachment to this e-mail has been checked for viruses. We accept no liability for any damage sustained as a result of software viruses and advise you carry out your own virus checks before opening any attachment. This email contains the views of the author and should not be interpreted as the views of Kevin O. Butler & Associates, Inc.*

---

**From:** Groves, Amber [<mailto:agroves@slo.state.nm.us>]

**Sent:** Tuesday, August 15, 2017 10:24 AM

**To:** Lisa Builta; Mark Larson; 'Yu, Olivia, EMNRD'; 'mymerch@penrocoil.com'

**Cc:** Gerald Forbus

**Subject:** RE: 1RP-4622 New Mexico State DE Well Notification for Soil Sample Collection

All,

Please see pink highlighted portion in Olivia's e-mail requiring confirmation that the site will be fully delineated.

Thank you,

**Amber Groves**

Remediation Specialist

Field Operations Division

(575)392-3697

(575)263-3209 cell

New Mexico State Land Office

2827 N. Dal Paso Suite 117

Hobbs, NM 88260

.....  
**CONFIDENTIALITY NOTICE** - This e-mail transmission, including all documents, files, or previous e-mail messages attached hereto, may contain confidential and/or legally privileged information. If you are not the intended recipient, or a person responsible for delivering it to the intended recipient, you are hereby

notified that you must not read this transmission and that any disclosure, copying, printing, distribution, or use of any of the information contained in and/or attached to this transmission is STRICTLY PROHIBITED. If you have received this transmission in error, please immediately notify the sender and delete the original transmission and its attachments without reading or saving in any manner. Thank you.

---

**From:** Lisa Builta [<mailto:lisab@kobutler.com>]

**Sent:** Tuesday, August 15, 2017 9:16 AM

**To:** Groves, Amber <[agroves@slo.state.nm.us](mailto:agroves@slo.state.nm.us)>; Mark Larson <[Mark@laenvironmental.com](mailto:Mark@laenvironmental.com)>; 'Yu, Olivia, EMNRD' <[Olivia.Yu@state.nm.us](mailto:Olivia.Yu@state.nm.us)>; 'mymerch@penrocoil.com' <[mymerch@penrocoil.com](mailto:mymerch@penrocoil.com)>

**Cc:** Gerald Forbus <[gforbus@laenvironmental.com](mailto:gforbus@laenvironmental.com)>

**Subject:** RE: 1RP-4622 New Mexico State DE Well Notification for Soil Sample Collection

All,

There have been several emails back and forth where I have provided the required documentation. There is not a request on the email dated July 12, 2017. Only advisement that additional sample points may be required and to advise if I needed additional clarification.

*Thank you,*

*Lisa Builta*

*Director of Administration*



Phone: (432) 682-1178

Mobile: (432) 599-2025

Fax: (432) 687-5725

[lisab@KOButler.com](mailto:lisab@KOButler.com)

*The information contained in this e-mail is strictly confidential and for the intended use of the addressee only. Any disclosure, use or copying of the information by anyone other than the intended recipient is prohibited. If you have received this message in error, please notify the sender immediately by return e-mail. Kevin O. Butler & Associates, Inc. has taken every reasonable precaution to ensure that any attachment to this e-mail has been checked for viruses. We accept no liability for any damage sustained as a result of software viruses and advise you carry out your own virus checks before opening any attachment. This email contains the views of the author and should not be interpreted as the views of Kevin O. Butler & Associates, Inc.*

---

**From:** Groves, Amber [<mailto:agroves@slo.state.nm.us>]

**Sent:** Tuesday, August 15, 2017 10:07 AM

**To:** Mark Larson; 'Yu, Olivia, EMNRD'; Lisa Builta; 'mymerch@penrocoil.com'

**Cc:** Gerald Forbus

**Subject:** RE: 1RP-4622 New Mexico State DE Well Notification for Soil Sample Collection

Mark,

I have not issued approval as I was waiting on Kevin O. Butler to respond to Olivia's request on July 12, 2017 for confirmation. I have copied her e-mail below.

Ms. Builta:

There are no data provided. **If you are referring to the number and location of the sample points, then they are adequate as proposed.** Please be advised that as the delineation activities advance, more sample points may be necessary to characterize sufficiently the releases. **NMOCD requires the Responsible Operator to confirm that complete vertical and horizontal delineation will occur.** For 1RP-4622 & 1RP-4623, this means obtaining and maintaining  $\leq 600$  mg/kg horizontally and vertically for 10 ft. further in depth in addition to permissible RRALs. Please let me know if you require additional clarification.

Thanks,  
Olivia

Please confirm so that approval can be issued.

Thank you,

**Amber Groves**

*Remediation Specialist*  
*Field Operations Division*  
(575)392-3697  
(575)263-3209 cell  
New Mexico State Land Office  
2827 N. Dal Paso Suite 117  
Hobbs, NM 88260

.....  
**CONFIDENTIALITY NOTICE** - This e-mail transmission, including all documents, files, or previous e-mail messages attached hereto, may contain confidential and/or legally privileged information. If you are not the intended recipient, or a person responsible for delivering it to the intended recipient, you are hereby notified that you must not read this transmission and that any disclosure, copying, printing, distribution, or use of any of the information contained in and/or attached to this transmission is **STRICTLY PROHIBITED**. If you have received this transmission in error, please immediately notify the sender and delete the original transmission and its attachments without reading or saving in any manner. Thank you.

---

**From:** Mark Larson [<mailto:Mark@laenvironmental.com>]

**Sent:** Tuesday, August 15, 2017 8:29 AM

**To:** 'Yu, Olivia, EMNRD' <[Olivia.Yu@state.nm.us](mailto:Olivia.Yu@state.nm.us)>; Groves, Amber <[agroves@slo.state.nm.us](mailto:agroves@slo.state.nm.us)>; 'lisab@kobutler.com' <[lisab@kobutler.com](mailto:lisab@kobutler.com)>; 'mymerch@penrocoil.com' <[mymerch@penrocoil.com](mailto:mymerch@penrocoil.com)>

**Cc:** Gerald Forbus <[gforbus@laenvironmental.com](mailto:gforbus@laenvironmental.com)>

**Subject:** Re: 1RP-4622 New Mexico State DE Well Notification for Soil Sample Collection

Olivia,

Larson & Associates, Inc. (LAI), on behalf of Kevin O. Butler & Associates, to provide notification that personnel from LAI will be at the New Mexico State DE Well #1 (1RP-4622) on Wednesday, August 16, 2017, at 10:00am for the purpose of collecting soil samples according to the attached plan. Please contact Kevin O. Butler at (432) 682-1178 or me if you have questions.

Respectfully,

Mark J. Larson, P.G.  
President/Sr. Project Manager  
507 N. Marienfeld St., Suite 205  
Midland, Texas 79701  
Office – 432-687-0901  
Cell – 432- 556-8656  
Fax – 432-687-0456  
[mark@laenvironmental.com](mailto:mark@laenvironmental.com)



“Serving the Permian Basin Since 2000”

---

**From:** Lisa Bulta [<mailto:lisab@kobutler.com>]

**Sent:** Thursday, April 20, 2017 12:32 PM

**To:** Yu, Olivia, EMNRD ([Olivia.Yu@state.nm.us](mailto:Olivia.Yu@state.nm.us))

**Cc:** Groves, Amber ([agroves@slo.state.nm.us](mailto:agroves@slo.state.nm.us))

**Subject:** 1RP-4622 New Mexico State DE Well

All,

Attached is what I have on the DE well. I will be sending over the Battery information here shortly.

I sincerely apologize for the delay. This is a one man office and I am trying my hardest to do exactly what you are requiring of me.

I am a work in progress.

Thank you,

*Lisa Builta*

*Director of Administration*



Phone: (432) 682-1178

Mobile: (432) 599-2025

Fax: (432) 687-5725

[lisab@KOButler.com](mailto:lisab@KOButler.com)

*The information contained in this e-mail is strictly confidential and for the intended use of the addressee only. Any disclosure, use or copying of the information by anyone other than the intended recipient is prohibited. If you have received this message in error, please notify the sender immediately by return e-mail. Kevin O. Butler & Associates, Inc. has taken every reasonable precaution to ensure that any attachment to this e-mail has been checked for viruses. We accept no liability for any damage sustained as a result of software viruses and advise you carry out your own virus checks before opening any attachment. This email contains the views of the author and should not be interpreted as the views of Kevin O. Butler & Associates, Inc.*

---

This email has been scanned by the Symantec Email Security.cloud service.  
For more information please visit <http://www.symanteccloud.com>

---

This email has been scanned by the Symantec Email Security.cloud service.  
For more information please visit <http://www.symanteccloud.com>

---

This email has been scanned by the Symantec Email Security.cloud service.  
For more information please visit <http://www.symanteccloud.com>

---

This email has been scanned by the Symantec Email Security.cloud service.  
For more information please visit <http://www.symanteccloud.com>

---

This email has been scanned by the Symantec Email Security.cloud service.  
For more information please visit <http://www.symanteccloud.com>

---

This email has been scanned by the Symantec Email Security.cloud service.  
For more information please visit <http://www.symanteccloud.com>

---

**From:** [Yu, Olivia, EMNRD](#)  
**To:** "[Lisa Builta](#)"; [Groves, Amber \(agroves@slo.state.nm.us\)](mailto:agroves@slo.state.nm.us); [Oberding, Tomas, EMNRD](#)  
**Subject:** RE: 1RP-4622 Corrective Sampling Map  
**Date:** Wednesday, July 12, 2017 7:18:00 AM

---

Good morning Ms. Builta:

The revised map for 1RP-4622 with the proposed sample locations are adequate, but please be advised that additional sample locations and depth deeper than indicated on the map may be required to represent the release area. Obtain and maintain permissible levels of 600 mg/kg chlorides for 10 ft. further in depth.

Please confirm. Like approval from SLO is required.

Thanks,

Olivia Yu  
Environmental Specialist  
NMOCD, District I  
[Olivia.yu@state.nm.us](mailto:Olivia.yu@state.nm.us)  
575-393-6161 x113

OCD approval does not relieve the operator of liability should their operations fail to adequately investigate and remediate contamination that may pose a threat to ground water, surface water, human health or the environment. In addition, OCD approval does not relieve the operator of responsibility for compliance with any other federal, state, local laws and/or regulations.

---

**From:** Lisa Builta [mailto:[lisab@kobutler.com](mailto:lisab@kobutler.com)]  
**Sent:** Tuesday, June 20, 2017 3:24 PM  
**To:** Yu, Olivia, EMNRD <[Olivia.Yu@state.nm.us](mailto:Olivia.Yu@state.nm.us)>; Groves, Amber ([agroves@slo.state.nm.us](mailto:agroves@slo.state.nm.us)) <[agroves@slo.state.nm.us](mailto:agroves@slo.state.nm.us)>; Oberding, Tomas, EMNRD <[Tomas.Oberding@state.nm.us](mailto:Tomas.Oberding@state.nm.us)>  
**Subject:** 1RP-4622 Corrective Sampling Map

Ms. Yu,

Attached is a corrected map exhibiting approximate sampling points w/ scale per your email on 6/9/17. Once approved by OCD/SLO, Kevin O. Butler & Associates, Inc. will begin the sampling process for at which time you will be notified for witnessing. At the end of this process, I will be able to provide you with laboratory analyses, field data, photos, etc.

Please let me know if you require anything further so that we may get this matter wrapped up.

*Thank you,*



*Lisa Builta*

*Director of Administration*



Phone: (432) 682-1178

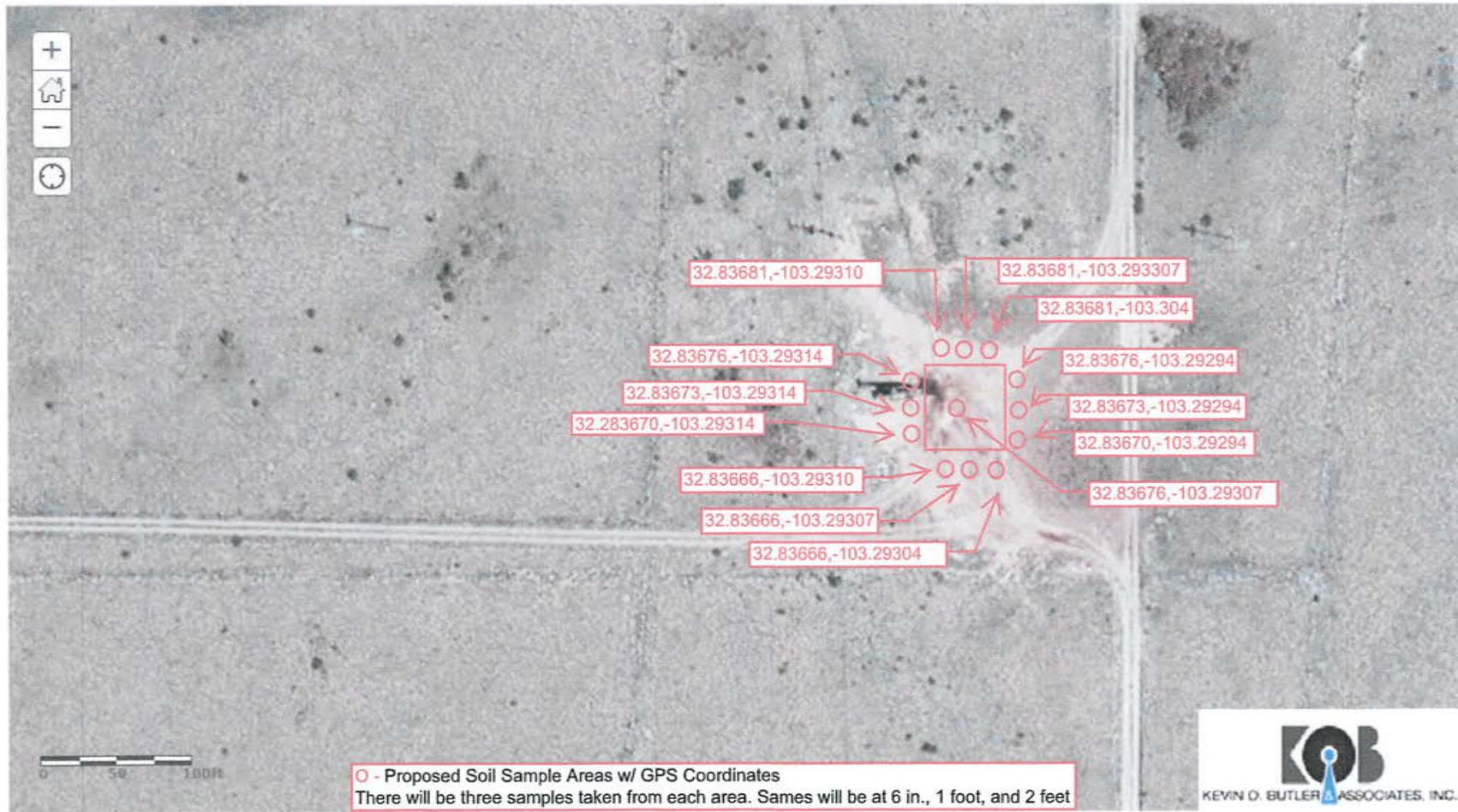
Mobile: (432) 599-2025

Fax: (432) 687-5725

[lisab@KOButler.com](mailto:lisab@KOButler.com)

*The information contained in this e-mail is strictly confidential and for the intended use of the addressee only. Any disclosure, use or copying of the information by anyone other than the intended recipient is prohibited. If you have received this message in error, please notify the sender immediately by return e-mail. Kevin O. Butler & Associates, Inc. has taken every reasonable precaution to ensure that any attachment to this e-mail has been checked for viruses. We accept no liability for any damage sustained as a result of software viruses and advise you carry out your own virus checks before opening any attachment. This email contains the views of the author and should not be interpreted as the views of Kevin O. Butler & Associates, Inc.*

NEW MEXICO STATE DE WELL LEA COUNTY, NEW MEXICO  
API# 30-025-21618, 1RP-4622  
UL F SEC. 18, T17S, R37E



Kevin O. Butler & Associates, Inc.  
New Mexico State DE #1 Well  
Lea County, New Mexico  
API 30-025-21618

UL F Sec. 18, T17S, R37E  
N 32°50'12.34 W 103°17'35.30  
Elevation 3,823 feet



**From:** [Yu, Olivia, EMNRD](#)  
**To:** "Lisa Builta"  
**Cc:** [Groves, Amber \(agroves@slo.state.nm.us\)](mailto:agroves@slo.state.nm.us); [Oberding, Tomas, EMNRD](#)  
**Subject:** RE: 1RP-4622 New Mexico State DE Well  
**Date:** Friday, June 9, 2017 9:48:00 AM

---

Ms. Builta:

Please address these concerns regarding the delineation workplan for 1RP-4622. Please confirm.

1. Additional sample points are required. In addition to the 4 sample locations along the perimeter of the release area, there needs to be at least 1 sample location inside. These 4 sample points are adequate to define the horizontal edge of the release, but they do not represent the locations of potential pooling points or source of release.
2. The provided sample map requires a scale and release area demarcated. Sample locations should be approximately 25 ft. distance apart or representative of pooling spots.
3. Vertical delineation is required for all sample points. Depth intervals cannot be greater than 5 ft. Permissible chloride levels is 600 mg/kg, which needs to be maintained for 10 ft. further in depth.
4. All laboratory analyses must have corresponding field data.
5. Submit documentation (photos, landfill tickets, receipts, etc.) for evidence of clean-up activities.

Contact me if you have questions/want clarification.

Thanks,

Olivia Yu  
Environmental Specialist  
NMOCD, District I  
[Olivia.yu@state.nm.us](mailto:Olivia.yu@state.nm.us)  
575-393-6161 x113

OCD approval does not relieve the operator of liability should their operations fail to adequately investigate and remediate contamination that may pose a threat to ground water, surface water, human health or the environment. In addition, OCD approval does not relieve the operator of responsibility for compliance with any other federal, state, local laws and/or regulations.

---

**From:** Lisa Builta [mailto:[lisab@kobutler.com](mailto:lisab@kobutler.com)]  
**Sent:** Thursday, April 20, 2017 11:32 AM  
**To:** Yu, Olivia, EMNRD <[Olivia.Yu@state.nm.us](mailto:Olivia.Yu@state.nm.us)>  
**Cc:** Groves, Amber ([agroves@slo.state.nm.us](mailto:agroves@slo.state.nm.us)) <[agroves@slo.state.nm.us](mailto:agroves@slo.state.nm.us)>  
**Subject:** 1RP-4622 New Mexico State DE Well

All,

Attached is what I have on the DE well. I will be sending over the Battery information here shortly.

I sincerely apologize for the delay. This is a one man office and I am trying my hardest to do exactly what you are requiring of me.

I am a work in progress.

*Thank you,*

*Lisa Builta*

*Director of Administration*



Phone: (432) 682-1178

Mobile: (432) 599-2025

Fax: (432) 687-5725

[lisab@KOButler.com](mailto:lisab@KOButler.com)

*The information contained in this e-mail is strictly confidential and for the intended use of the addressee only. Any disclosure, use or copying of the information by anyone other than the intended recipient is prohibited. If you have received this message in error, please notify the sender immediately by return e-mail. Kevin O. Butler & Associates, Inc. has taken every reasonable precaution to ensure that any attachment to this e-mail has been checked for viruses. We accept no liability for any damage sustained as a result of software viruses and advise you carry out your own virus checks before opening any attachment. This email contains the views of the author and should not be interpreted as the views of Kevin O. Butler & Associates, Inc.*