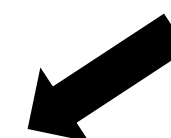


LEGEND

- PROPOSED BORING LOCATION
- PROPOSED BACKGROUND SAMPLE
- GROUNDWATER MONITORING WELL
- PROPOSED NEW LOCATIONS FOR RUSH ANALYSIS

NOTE: LOCATION OF THE GROUNDWATER MONITORING WELL WILL BE DETERMINED AFTER INITIAL LAB ANALYSIS

1RP-4820: Jan 19, 2018 update



FLOW DIRECTION

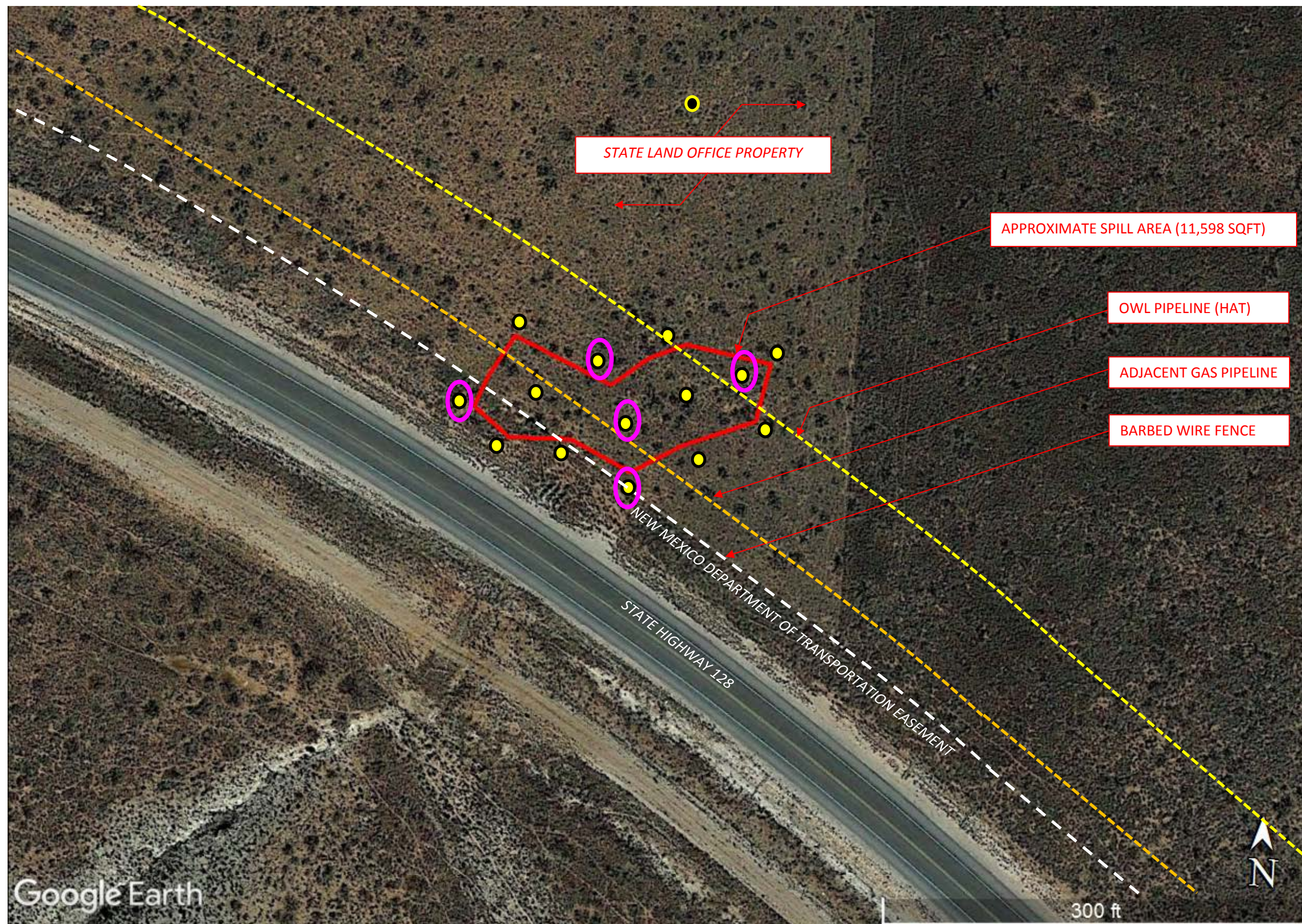
Figure:
A2

Scale:
NTS

Date:
October 2017

General View of Release
OWL SWD Operating, LLC
Jal, New Mexico
Unit H Section 32 Township 24S Range 35E





LEGEND

- PROPOSED BORING LOCATION
- PROPOSED BACKGROUND SAMPLE
- GROUNDWATER MONITORING WELL

NOTE: LOCATION OF THE GROUNDWATER MONITORING WELL WILL BE DETERMINED AFTER INITIAL LAB ANALYSIS

1RP-4820: Jan 9, 2018 update.

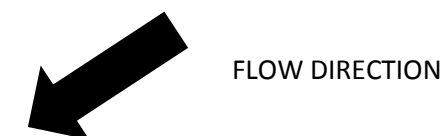


Figure:

A2

Scale:

NTS

Date:

October 2017

Detailed View of Release
 OWL SWD Operating, LLC
 Jal, New Mexico
 Unit H Section 32 Township 24S Range 35E

