



Produced Water Release and Historic Spills on State Trust Land

Section 36 T19S R34E. Lea County, NM

New Mexico State Land Office Hobbs District Mathew Hagman District Resource Specialist
11/7/2014

New Mexico State Land Office Hobbs District
Mathew Hagman District Resource Specialist

APPENDIX A: Google Maps Satellite Images

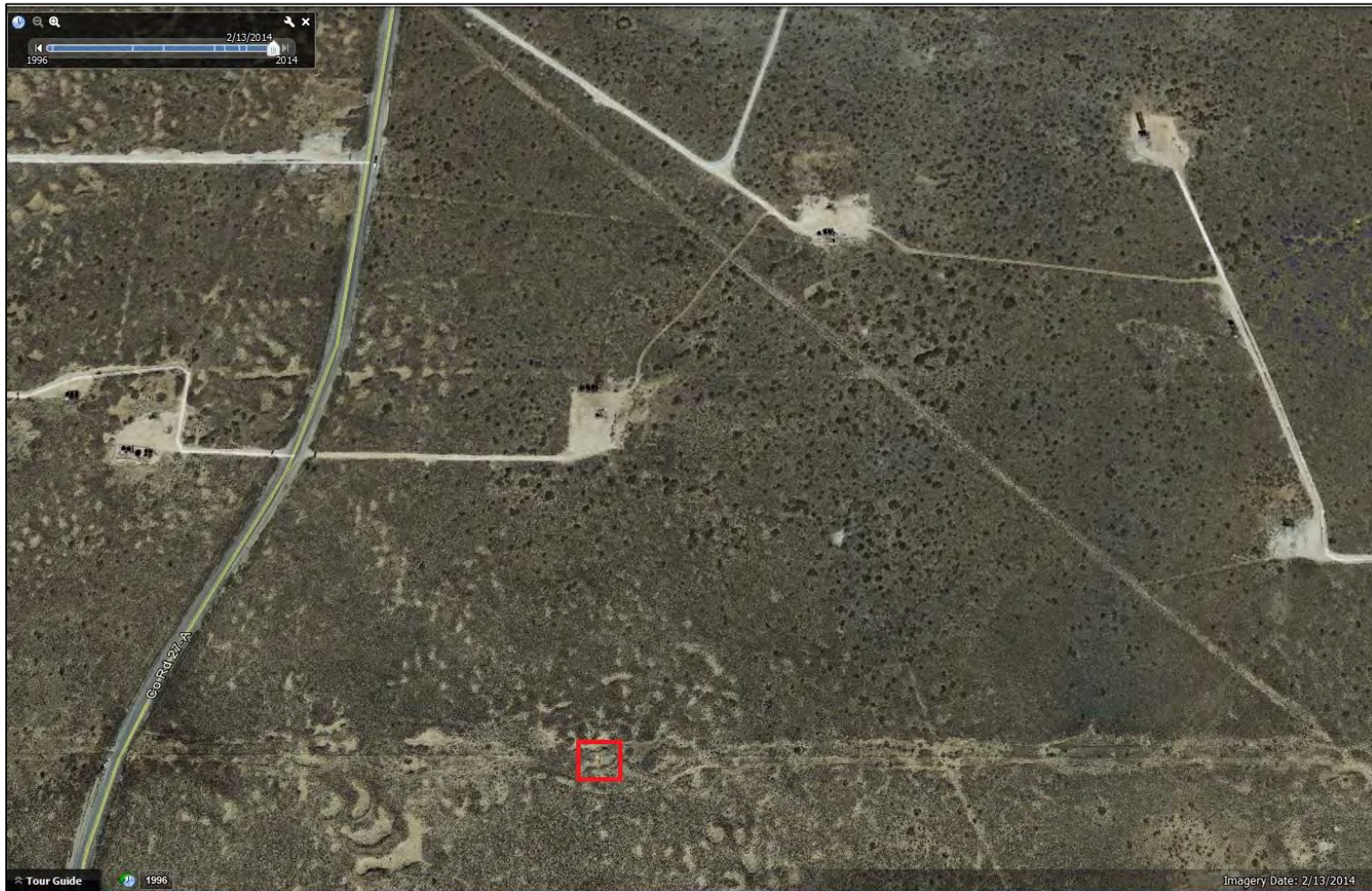


Image 1: Current spill highlighted with red box. Imagery date February 13th, 2014. Image courtesy of Google Earth

New Mexico State Land Office Hobbs District
Mathew Hagman District Resource Specialist

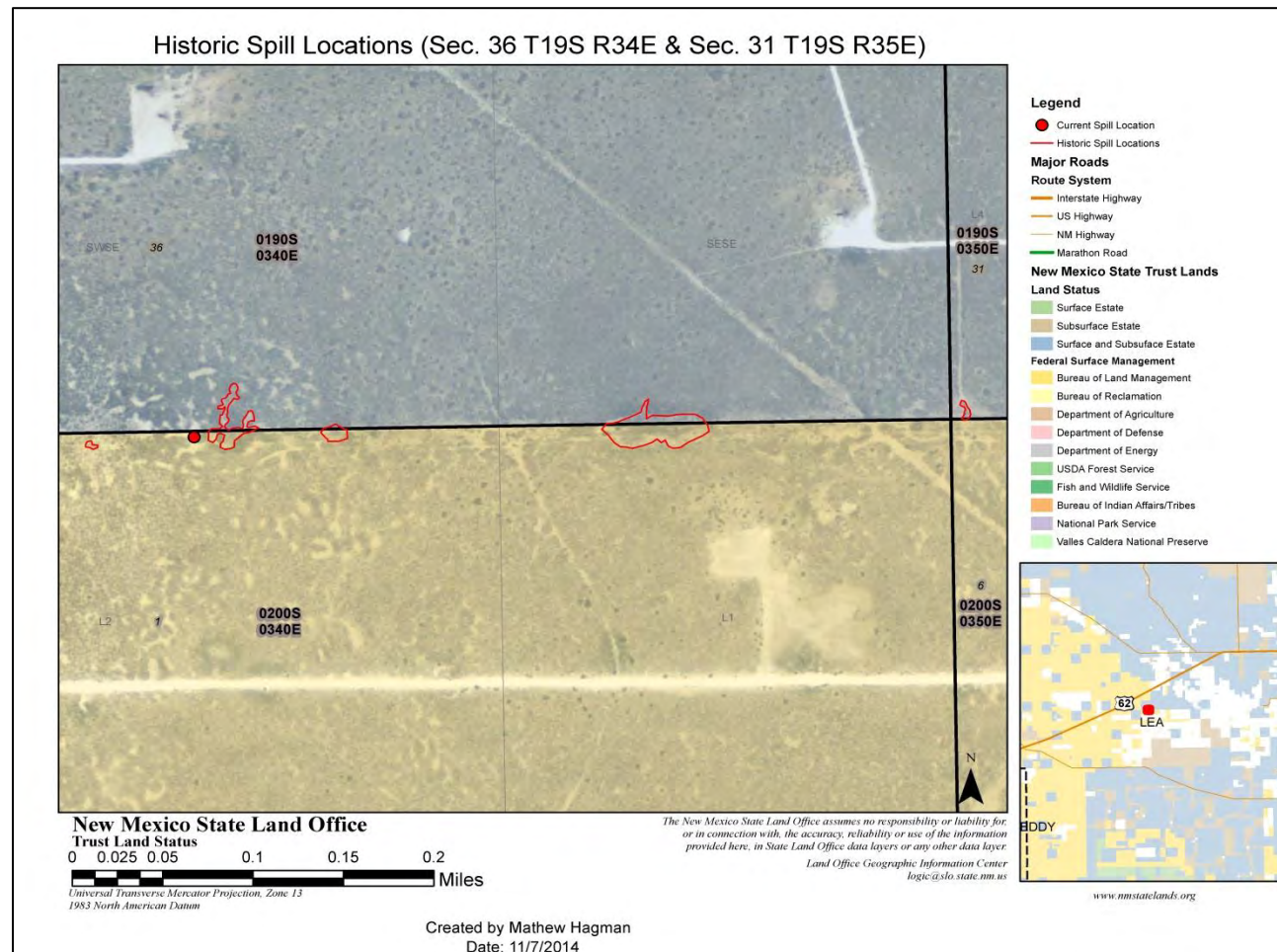
APPENDIX A: Google Maps Satellite Images



Image 2: Close Up Current spill highlighted with red arrow. Imagery date February 13th, 2014. Image courtesy of Google Earth

New Mexico State Land Office Hobbs District
Mathew Hagman District Resource Specialist

APPENDIX B: MAPS



New Mexico State Land Office Hobbs District Mathew Hagman District Resource Specialist

APPENDIX B: MAPS

