

A compass rose with eight points. The letter 'Z' is in the center, indicating that the top point is North.

GENERAL NOTES:

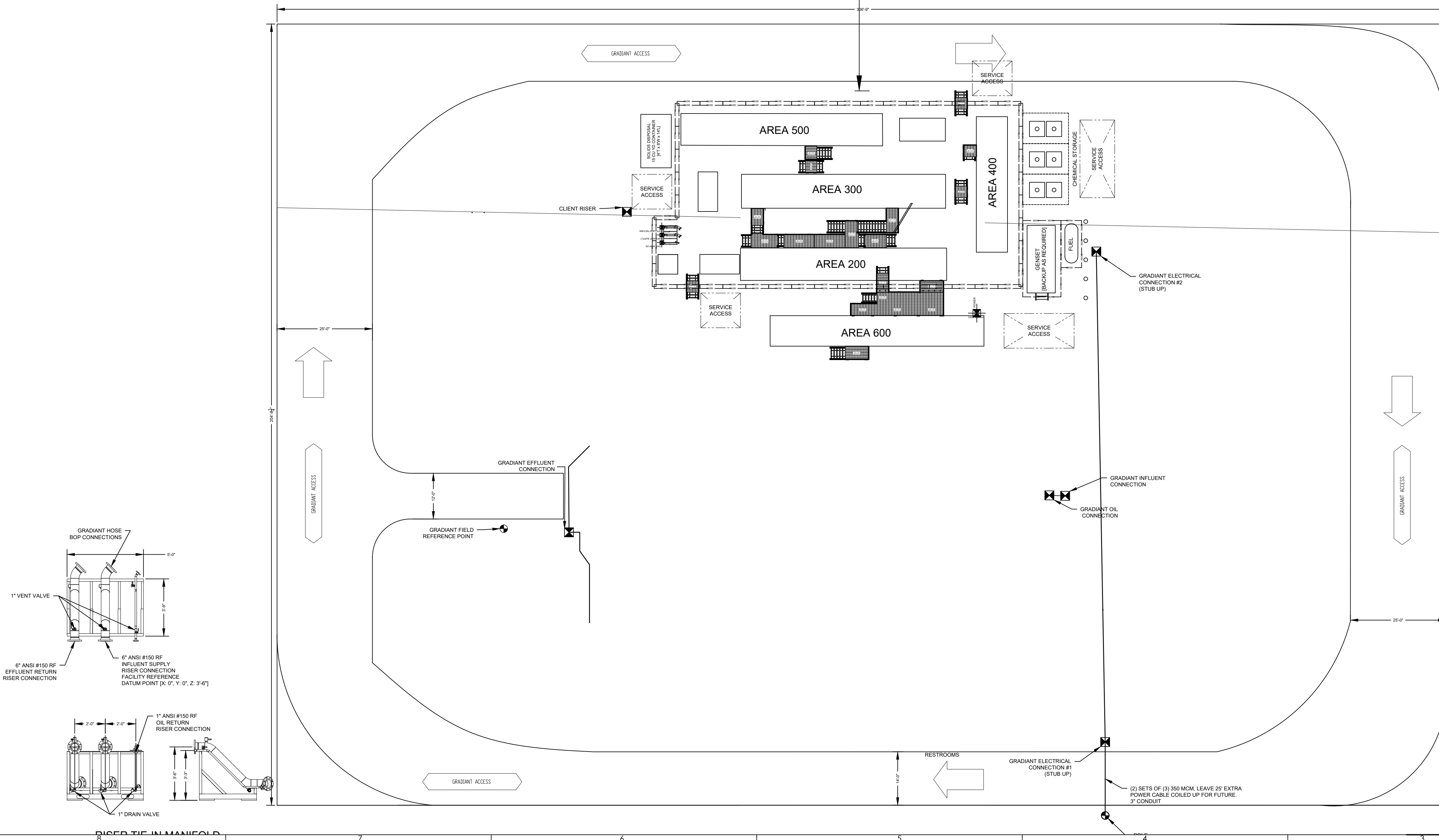
- SITE PLAN REFERENCE DATUM SHALL BE THE TRUE
NORTHEAST CORNER OF THE FACILITY PARCEL.

- CVX TO SURVEY AND STAKE AT MINIMUM SITE DATUM AND
GRADIENT INFLUENT RISER CONNECTION LOCATION. OUTSIDE
CORNERS OF CONTINMENT BERM RECOMMENDED FOR ASSET
DEPLOYMENT.


WELL HEAD
(EXACT LOCATION OF WELL
HEAD NOT SHOWN. ONLY
DISTANCE PLANT NORTH OF
SOUTHERN BORDER IS GIVEN)

REVISIONS			
REV	DESCRIPTION	DATE	NAME
-	INITIATED	09/25/17	SDZ

AREA No.	SCE 2.0 MAJOR EQUIPMENT LIST
200	OWS PLATFORM
	INFLUENT PUMP STATION
	OIL WATER SEPERATOR
	OIL DISCHARGE STATION
	OWS SLUDGE PUMP STATION
	BRINE PUMP STATION
	POLYMER STATION
	BIOCIDE PUMP STATION
300	CLARIFIER PLATFORM
	CHEMICAL REACTION STATION
	CLARIFIER SYSTEM
	CLARIFIER SLUDGE PUMP STATION
	pH NEUTRALIZATION STATION
	EFFLUENT PUMP STATION
	ACID PUMP STATION
400	CAUSTIC PLATFORM
	CAUSTIC BULK STORAGE
	CAUSTIC OFFLOAD STATION
	CAUSTIC PUMP STATION
	COAG PUMP STATION
500	SOLIDS HANDLING PLATFORM
	SLUDGE DEWATERING STORAGE
	SLUDGE TRANSFER PUMP STATION
	FILTER PRESS SYSTEM
	DRY SLUDGE CONVEYOR SYSTEM
600	CENTRAL CONTROL PLATFORM
	CONTROL ROOM
	POWER DISTRIBUTION SYSTEM
	AIR COMPRESSOR STATION
	FRESH WATER STATION
700	BALANCE OF PLANT - BOP
	PROCESS CONVEYANCE - HOSE
	CHEMICAL DISTRIBUTION - TUBING
	AIR DISTRIBUTION - HOSE
	POWER DISTRIBUTION WIRING
	SIGNAL & COMMUNICATIONS CABLING
	EYEWASH STATION
	PRIMARY FACILITY SPILL CONTAINMENT
	ACID DAY TOTE CONTAINMENT
	BIOCIDE DAY TOTE CONTAINMENT
	OIL TOTE & CONTAINMENT
	RISER TIE-IN MANIFOLD
	PLATFORMS & BERM CROSS-OVERS



INITIATED

	CLIENT: CHEVRON	
	SALADO DRAW DEVELOPMENT - LEA COUNTY, NM - MCBU PRODUCED WATER RECYCLE	
225 WILDWOOD AVE, WOBURN MA PHONE: 781-819-05034 ORIGINAL DATE: ORIGINAL AUTHOR: 02/16/2018 JOSEPH BIXBY CHECKED DATE: CHECKED BY: 4/20/2017 CHECKING REQUIRED APPROVED DATE: APPROVAL BY: 4/20/2017 APPROVAL REQUIRED <small>THIS DRAWING OR PRINT IS THE PROPERTY OF GRADIANT CORPORATION AND IS SUBJECT TO THE RETURN ON REQUEST. THE DESIGN CONCEPTS AND INFORMATION CONTAINED HEREIN ARE PROPRIETARY TO THAT CORPORATION AND ITS SUBSIDIARIES AND SUBJECT TO CONFIDENCE. THEY MAY NOT BE TRANSFERABLE AND MUST BE USED ONLY FOR THE PURPOSE FOR WHICH THE PRINT IS EXPRESSLY LOANED. THEY MAY NOT BE REPRODUCED OR REMODEL OR REPRODUCED IN ANY MANNER WITHOUT THE WRITTEN PERMISSION OF GRADIANT CORPORATION. ALL PATENT RIGHTS ARE RESERVED UNLESS THEY ARE SPECIFICALLY RELEASED.</small>	SCE SYSTEM - VERSION 2.0 ENGINEERING / MANUFACTURING PACKAGE DESIGN - GENERAL REFERENCE CLIENT - FACILITY OUTLINE ARRANGEMENT	
SIZE: D SCALE: 1/16"=1'-0"	GRADIANT P/N: - JOB CODE: CONFIDENTIAL	DWG NO. QB-P16-0127-0000-0003 SHEET: 1 OF 1

DATE PRINTED: 2/16/2018