

From: [Yu, Olivia, EMNRD](#)
To: [Geoff Leking](#); ["Mann, Ryan"](#)
Cc: ["Ralph Tijerina"](#); shane@etechemv.com; kim@etechemv.com
Subject: RE: Goodnight Former DCP Pump Station Historical Release 1RP-5091 Corrective Action Plan Modification
Date: Tuesday, August 7, 2018 9:33:00 AM
Attachments: approved_1RP5091_8.6.18 corrective action plan modification.pdf

Good morning Mr. Leking:

NMOCD will approved of the proposed remediation for 1RP-5091 with one clarification: one additional sidewall between the two different depths of excavation.

In regards to your inquiry about backfilling with blended material for 1RP-5091. This may be permissible if the visible heavily-impacted material is removed and the remaining blended backfilled material is laboratory tested every 50 to no greater than 75 cubic yards for TPH extended and BTEX. Please be advised that the blended backfill soil must be able to support revegetation.

Please confirm or inform for clarification.

Like approval from NMSLO required. NMSLO may have additional stipulations or conditions.

Thanks,
Olivia

From: Geoff Leking <geoff@etechemv.com>
Sent: Monday, August 6, 2018 3:45 PM
To: Yu, Olivia, EMNRD <Olivia.Yu@state.nm.us>; 'Mann, Ryan' <rmann@slo.state.nm.us>
Cc: 'Ralph Tijerina' <rtijerina@goodnightmidstream.com>; shane@etechemv.com; kim@etechemv.com
Subject: Goodnight Former DCP Pump Station Historical Release 1RP-5091 Corrective Action Plan Modification

Olivia and Ryan

For further clarification of the areas to be excavated please see the attached image. The site will be basically split in half. I will place the image in the modification. Please contact me with any questions or concerns. Thank you.

Geoff Leking

Etech Environmental & Safety Solutions, Inc.
PO Box 62228
Midland, Texas 79711
Office: (432)563-2200 ext. 212
Mobile: (432)425-7160
Fax: (432)563-2213

CONFIDENTIAL

This e-mail message, including any attachments, is intended solely for the individual(s) named above. It contains confidential and/or proprietary information. If you are not the intended recipient, please do not read, copy or distribute it or any information it contains. Please immediately notify the sender by return mail and delete it.

From: Yu, Olivia, EMNRD [<mailto:Olivia.Yu@state.nm.us>]
Sent: Friday, July 27, 2018 5:02 PM
To: Geoff Leking; 'Mann, Ryan'
Cc: 'Ralph Tijerina'; shane@etechnv.com; kim@etechnv.com
Subject: RE: Goodnight Former DCP Pump Station Historical Release 1RP-5091 Corrective Action Plan

Mr. Leking:

The preference is to use field tests and precise calibration of instruments to guide which area is represented by TT-1 data and the extent of the area represented by TT-2 data. S-2/TT-2 area show hydrocarbon-impacted soil to at least 3 ft. A modification remediation proposal of 2 different depths of excavation is permissible.

Thanks,
Olivia

From: Geoff Leking <geoff@etechnv.com>
Sent: Friday, July 27, 2018 12:19 PM
To: Yu, Olivia, EMNRD <Olivia.Yu@state.nm.us>; 'Mann, Ryan' <rmann@slo.state.nm.us>
Cc: 'Ralph Tijerina' <rtijerina@goodnightmidstream.com>; shane@etechnv.com; kim@etechnv.com
Subject: RE: Goodnight Former DCP Pump Station Historical Release 1RP-5091 Corrective Action Plan

Olivia

Would it be allowable to blend the soils to below regulatory guidelines and backfill with that material? Because of the configuration of the impact (mostly two circular ring like patterns) quite a bit of less impacted soil is in the footprint of the impacted area. That is why Test Trench 2 is far below the regulatory limits at a depth of four (4) feet bgs. Thank you, Olivia.

Geoff Leking

Etech Environmental & Safety Solutions, Inc.
PO Box 62228
Midland, Texas 79711
Office: (432)563-2200 ext. 212
Mobile: (432)425-7160
Fax: (432)563-2213

CONFIDENTIAL

This e-mail message, including any attachments, is intended solely for the individual(s) named above. It contains confidential and/or propriety information. If you are not the intended recipient, please do not read, copy or distribute it or any information it contains. Please immediately notify the sender by return mail and delete it.

From: Yu, Olivia, EMNRD [<mailto:Olivia.Yu@state.nm.us>]
Sent: Friday, July 27, 2018 12:03 PM
To: Geoff Leking; 'Mann, Ryan'
Cc: 'Ralph Tijerina'; shane@etechnv.com; kim@etechnv.com
Subject: RE: Goodnight Former DCP Pump Station Historical Release 1RP-5091 Corrective Action Plan

Mr. Leking & Goodnight Midstream:

Thank you. Much appreciated.

Olivia

From: Geoff Leking <geoff@etechnv.com>
Sent: Friday, July 27, 2018 10:19 AM
To: Yu, Olivia, EMNRD <Olivia.Yu@state.nm.us>; 'Mann, Ryan' <rmann@slo.state.nm.us>
Cc: 'Ralph Tijerina' <rtijerina@goodnightmidstream.com>; shane@etechnv.com;
kim@etechnv.com
Subject: RE: Goodnight Former DCP Pump Station Historical Release 1RP-5091 Corrective Action Plan

Olivia

The impacted area will be excavated and bottom confirmations samples collected instead of installing a plastic liner. Thank you, Olivia.

Geoff Leking

Etech Environmental & Safety Solutions, Inc.
PO Box 62228
Midland, Texas 79711
Office: (432)563-2200 ext. 212
Mobile: (432)425-7160
Fax: (432)563-2213

CONFIDENTIAL

This e-mail message, including any attachments, is intended solely for the individual(s) named above. It contains confidential and/or propriety information. If you are not the intended recipient, please do not read, copy or distribute it or any information it contains. Please immediately notify the sender by return mail and delete it.

From: Yu, Olivia, EMNRD [<mailto:Olivia.Yu@state.nm.us>]
Sent: Friday, July 27, 2018 10:01 AM
To: Geoff Leking; Mann, Ryan

Cc: Ralph Tijerina; shane@etechnv.com; kim@etechnv.com

Subject: RE: Goodnight Former DCP Pump Station Historical Release 1RP-5091 Corrective Action Plan

Good morning Mr. Leking:

NMOCD approves of the delineation completed for 1RP-5091 and the proposed additional delineation/remediation plan. Due to the levels of TPH extended remaining in place between 4.5 and 5.5 ft. bgs for the TT-1 area, NMOCD requests that an additional foot of impacted soil be excavated and bottom confirmation samples taken rather than emplacement of a liner. Provide dated photo documentation of the remediation activities.

Please confirm or inform for clarification.

Like approval from NMSLO required. NMSLO may have additional concerns or stipulations.

Thanks,
Olivia

From: Geoff Leking <geoff@etechnv.com>

Sent: Tuesday, July 10, 2018 8:30 AM

To: Yu, Olivia, EMNRD <Olivia.Yu@state.nm.us>; Mann, Ryan <rmann@slo.state.nm.us>

Cc: Ralph Tijerina <rtijerina@goodnightmidstream.com>; shane@etechnv.com;
kim@etechnv.com

Subject: Goodnight Former DCP Pump Station Historical Release 1RP-5091 Corrective Action Plan

Olivia and Ryan

Etech is pleased to submit for your review the above referenced document. Please contact me with any questions or concerns. I look forward to your response. Thank you.

Geoff Leking

Etech Environmental & Safety Solutions, Inc.

PO Box 62228

Midland, Texas 79711

Office: (432)563-2200 ext. 212

Mobile: (432)425-7160

Fax: (432)563-2213

CONFIDENTIAL

This e-mail message, including any attachments, is intended solely for the individual(s) named above. It contains confidential and/or proprietary information. If you are not the intended recipient, please do not read, copy or distribute it or any information it contains. Please immediately notify the sender by return mail and delete it.

From: Geoff Leking
To: [Yu, Olivia, EMNRD](#); ["Mann, Ryan"](#)
Cc: ["Ralph Tijerina"](#); shane@etechemv.com; kim@etechemv.com
Subject: Goodnight Former DCP Pump Station Historical Release 1RP-5091 Corrective Action Plan Modification
Date: Monday, August 6, 2018 3:20:18 PM
Attachments: 8.6.18 corrective action plan modification.pdf

Olivia and Ryan

Etech is pleased to submit for your review the above referenced document in response to Olivia Yu's NMOCD email of July 27, 2018 and Ryan Mann's NMSLO email of July 30, 2018. The modification contains:

- 1) Modified language in the Scope of Work that indicates the area associated with Test Trench 1 will be excavated to a depth of six and a half (6.5) feet below ground surface (bgs) and the area associated with Test Trench 2 will be excavated to a depth of four (4) feet bgs. In addition to the already planned six (6) sidewall confirmation soil samples, two (2) bottom hole confirmation soil samples will be collected.
- 2) Modified language in the Scope of Work that indicates the site will be reseeded with NMSLO Seed Mix Sandy Loam (SL) or NMSLO Seed Mix Sandy (S).
- 3) Modified Attachment B – Annotated Imagery displaying the proposed bottom hole confirmation soil sample locations denoted as BH 1 and BH 2.
- 4) The addition of Attachment E – NMSLO Seed Mixes.
- 5) Former Attachment E – Analytical Results is now Attachment F.

Please contact me with any questions or concerns. I look forward to your response. Thank you.

Geoff Leking

Etech Environmental & Safety Solutions, Inc.

PO Box 62228

Midland, Texas 79711

Office: (432)563-2200 ext. 212

Mobile: (432)425-7160

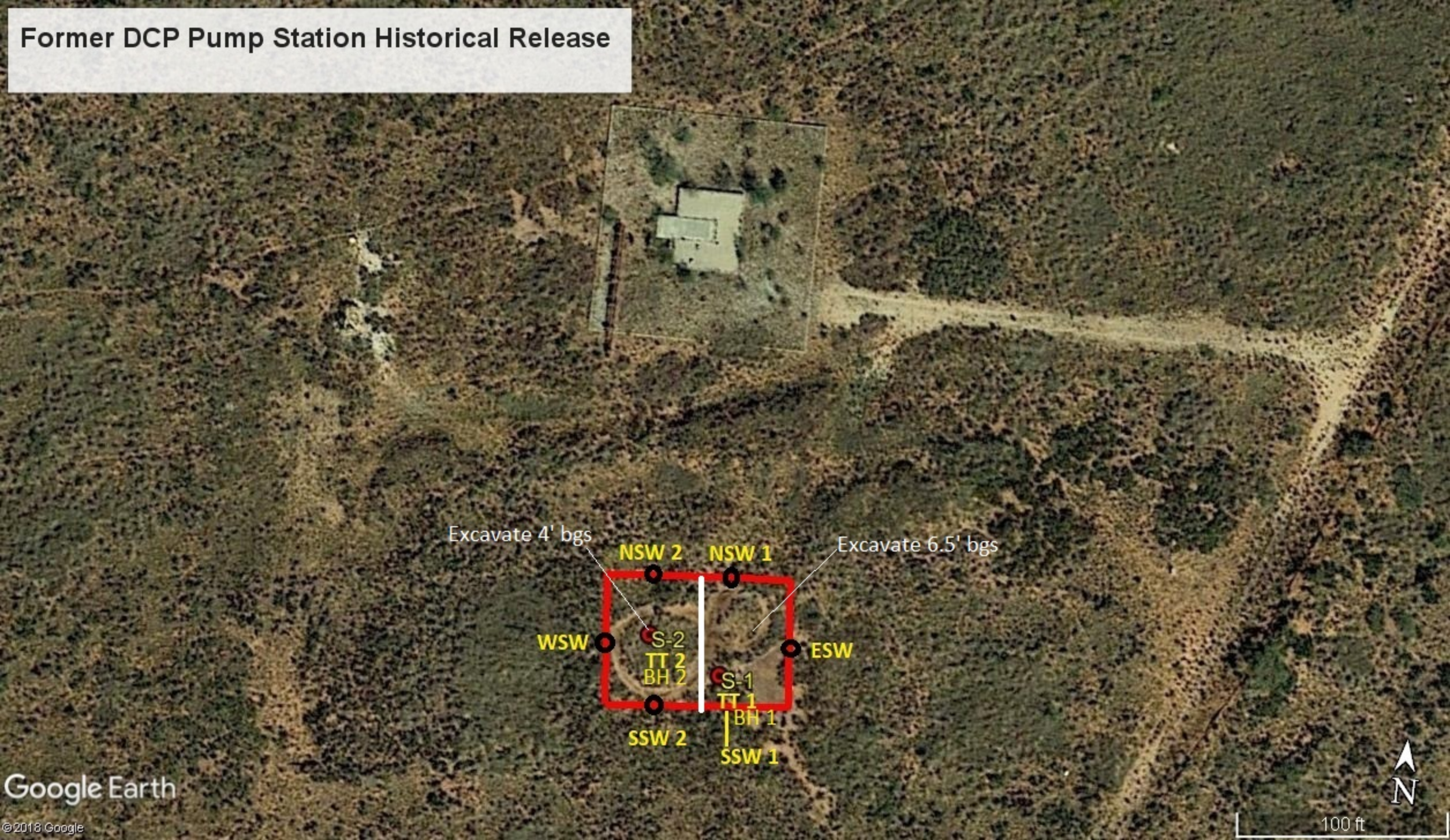
Fax: (432)563-2213

CONFIDENTIAL

This e-mail message, including any attachments, is intended solely for the individual(s) named above. It contains confidential and/or proprietary information. If you are not the intended recipient, please do not read, copy or distribute it or any information it contains. Please immediately notify the sender by return mail and delete it.

From: Yu, Olivia, EMNRD [mailto:Olivia.Yu@state.nm.us]
Sent: Friday, July 27, 2018 5:02 PM
To: Geoff Leking; 'Mann, Ryan'
Cc: 'Ralph Tijerina'; shane@etechemv.com; kim@etechemv.com
Subject: RE: Goodnight Former DCP Pump Station Historical Release 1RP-5091 Corrective Action Plan

Former DCP Pump Station Historical Release



Excavate 4' bgs

NSW 2

NSW 1

Excavate 6.5' bgs

WSW

S-2

TT 2

BH 2

ESW

S-1

TT 1

BH 1

SSW 2

SSW 1

