

**DISTRICT I -**  
1625 N. French Dr., Hobbs, NM 88240

**DISTRICT II**  
1301 W. Grand Avenue, Artesia, NM 88210

**DISTRICT III**  
1000 Rio Brazos Rd., Aztec, NM 87410

**DISTRICT IV**  
1220 S. St. Francis Dr., Santa Fe, NM 87505

State of New Mexico  
Energy, Minerals, and Natural Resources Department

**OIL CONSERVATION DIVISION**

1220 South St. Francis Dr.  
Santa Fe, New Mexico 87505

Form C-102  
Revised August 15, 2000  
Submit to Appropriate District Office  
State Lease - 4 copies  
Fee Lease - 3 copies

AMENDED REPORT

**WELL LOCATION AND ACREAGE DEDICATION PLAT**

<sup>1</sup> API Number 30-025-36676		<sup>2</sup> Pool Code 51020	<sup>3</sup> Pool Name Red Hills; Bone Spring	
<sup>4</sup> Property Code 33817	<sup>5</sup> Property Name VACA "24" FEDERAL			<sup>6</sup> Well Number 18
<sup>7</sup> OGRID No. 7377	<sup>8</sup> Operator Name EOG RESOURCES, INC.			<sup>9</sup> Elevation 3334'

**<sup>10</sup> Surface Location**

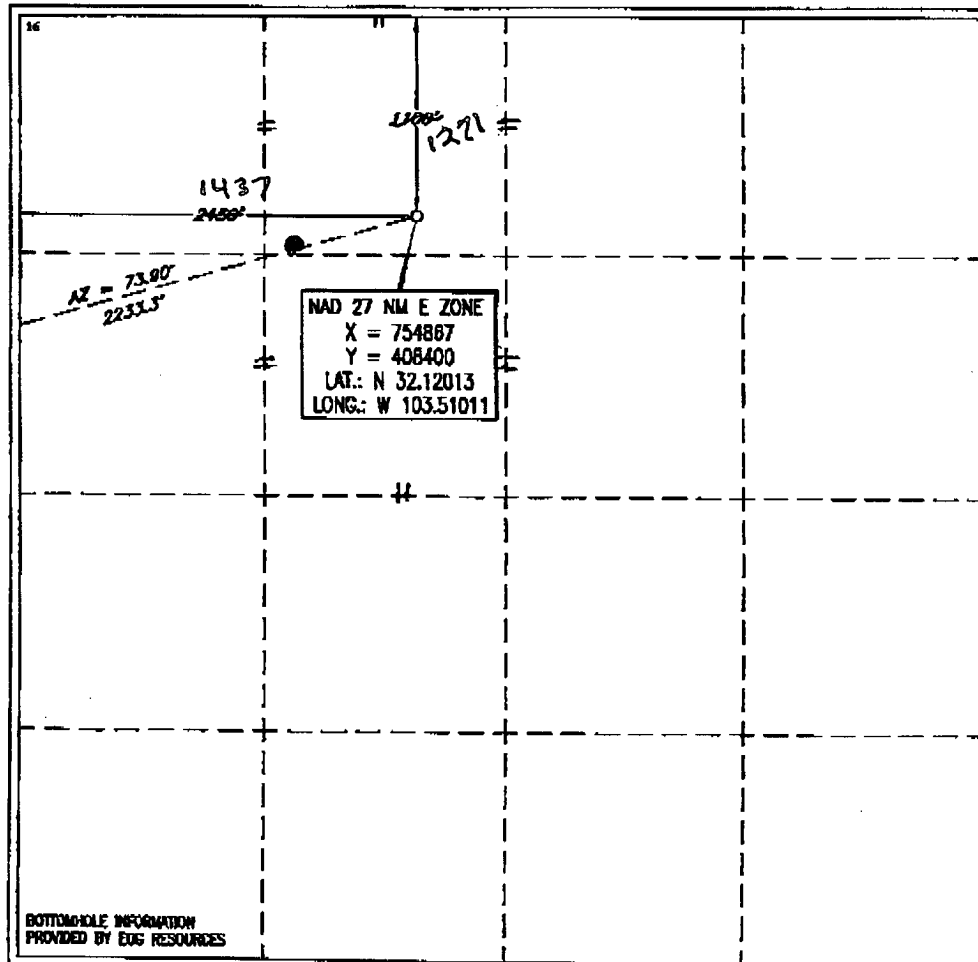
UL or lot no.	Section	Township	Range	Lot Idn	Feet from the	North/South line	Feet from the	East/West line	County

**<sup>11</sup> Bottom Hole Location If Different From Surface**

UL or lot no.	Section	Township	Range	Lot Idn	Feet from the	North/South line	Feet from the	East/West line	County
C	19	25 SOUTH	34 EAST, N.M.P.M.		1275 1271	NORTH	1423 1437	WEST	LEA

<sup>12</sup> Dedicated Acres 80	<sup>13</sup> Joint or Infill	<sup>14</sup> Consolidation Code	<sup>15</sup> Order No.
-------------------------------------	-------------------------------	----------------------------------	-------------------------

**NO ALLOWABLE WELL BE ASSIGNED TO THIS COMPLETION UNTIL ALL INTERESTS HAVE BEEN CONSOLIDATED OR A NON-STANDARD UNIT HAS BEEN APPROVED BY THE DIVISION**



BOTTOMHOLE INFORMATION PROVIDED BY EOG RESOURCES

**<sup>17</sup> OPERATOR CERTIFICATION**

I hereby certify that the information contained herein is true and complete to the best of my knowledge and belief.

*Stan Wagner*  
Signature

Stan Wagner  
Printed Name

Regulatory Analyst  
Title

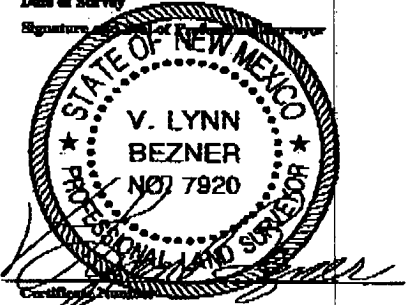
1/27/05  
Date

**<sup>18</sup> SURVEYOR CERTIFICATION**

I hereby certify that the well location shown on this plat was plotted from field notes of actual surveys made by me or under my supervision, and that the same is true and correct to the best of my belief.

MARCH 3, 2004  
Date of Survey

Signature of Registered Surveyor



V. L. BEZNER R.P.S. #7920  
JOB # 93559-B / 22 SE / J.C.P.