

District I
1625 N. French Dr., Hobbs, NM 88240
District II
1301 W. Grand Avenue, Artesia, NM 88210
District III
1000 Rio Brazos Road, Aztec, NM 87410
District IV
1220 S. St. Francis Dr., Santa Fe, NM 87505

State of New Mexico
Energy Minerals and Natural Resources **RECEIVED**

Form C-101
May 27, 2004

Oil Conservation Division SEP - 9 2005 Submit to appropriate District Office
1220 South St. Francis Dr. **OCD-ARTEZIA** AMENDED REPORT
Santa Fe, NM 87505

APPLICATION FOR PERMIT TO DRILL, RE-ENTER, DEEPEN, PLUGBACK, OR ADD A ZONE

Operator Name and Address Mewbourne Oil Company Po Box 5270 Hobbs, NM 88240		OGRID Number 14744
		API Number 30 - 015 - 34330
Property Code	Property Name Marlin 32 State	Well No. 1
Proposed Pool 1 Undes. Winchester; t Morrow		Proposed Pool 2

Surface Location

UL or lot no.	Section	Township	Range	Lot Idn	Feet from the	North/South line	Feet from the	East/West line	County
L	32	19S	29E		1650	S	990	W	Eddy

Proposed Bottom Hole Location If Different From Surface

UL or lot no.	Section	Township	Range	Lot Idn	Feet from the	North/South line	Feet from the	East/West line	County

Additional Well Information

Work Type Code N	Well Type Code G	Cable/Rotary R	Lease Type Code S	Ground Level Elevation 3282'
Multiple No	Proposed Depth 11700	Formation Morrow	Contractor TBA	Spud Date ASAP
Depth to Groundwater 50' or more but less than 100 no 0 pts		Distance from nearest fresh water well Less than 1000 from all other wtr sources 0 pts		Distance from nearest surface water 1000' or more 0 pts
Pit: Liner: Synthetic <input checked="" type="checkbox"/> _____ mils thick Clay <input type="checkbox"/> Pit Volume: 24000 _____ bbls Drilling Method: Production				
Closed-Loop System <input type="checkbox"/> Fresh Water <input checked="" type="checkbox"/> Brine <input checked="" type="checkbox"/> Diesel/Oil-based <input type="checkbox"/> Gas/Air <input type="checkbox"/>				

Proposed Casing and Cement Program

Hole Size	Casing Size	Casing weight/foot	Setting Depth	Sacks of Cement	Estimated TOC
26'	20	94# H40	300'	500	Surface
17 1/2"	13 3/8"	54.5# J55	1200'	900	Surface
12 1/4"	8 5/8"	32# J55	3000'	1000	Surface
7 7/8"	5 1/2"	17# N & S	11700'	500	Above Wolfcamp

Describe the proposed program. If this application is to DEEPEN or PLUG BACK, give the data on the present productive zone and proposed new productive zone. Describe the blowout prevention program, if any. Use additional sheets if necessary.

BOP Program: 13 3/8" 2k Hydril (see Exhibit #2) from surface casing to intermediate TD. Schaffer LWS or equivalent (Double-Ram Hydraulic) 11" 5000# with Hydril. (See Exhibit #2A) from intermediate casing to total depth. Rotating head, PVT, flow monitors and mud gas Separator from the Wolfcamp to TD.

Mud Program:

- 0' to 300' Fresh Water, spud mud, lime for PH and LCM as needed for seepage.
- 300' to 1200' Brine Water, lime for PH and LCM as needed for seepage.
- 1200' to 3000' Fresh Water and cut brine, lime for PH and LCM as needed for seepage.
- 3000' to TD Cut Brine. Caustic for PH, Starch for WL control and LCM as needed for seepage

I hereby certify that the information given above is true and complete to the best of my knowledge and belief. I further certify that the drilling pit will be constructed according to NMOCD guidelines a general permit , or an (attached) alternative OCD-approved plan .

Printed name: Kristi Green

Title: Hobbs Production

E-mail Address:

Date: 09/08/05

Phone:

OIL CONSERVATION DIVISION
TIM W. GUM
DISTRICT II SUPERVISOR

Approved by:

Title:

Approval Date:

Expiration Date:

SEP 14 2005

SEP 14 2006

Conditions of Appro

CEMENT TO COVER ALL OIL, GAS AND WATER BEARING ZONES

Salt, 29.5

DISTRICT I
1685 N. French Dr., Hobbs, NM 88240

DISTRICT II
811 South First, Artesia, NM 88210

DISTRICT III
1000 Rio Brazos Rd., Aztec, NM 87410

DISTRICT IV
2040 South Pacheco, Santa Fe, NM 87505

Revised March 17, 1999
Instruction on back
Submit to Appropriate District Office
State Lease - 4 Copies
Fee Lease - 3 Copies

OIL CONSERVATION DIVISION
P.O. Box 2088
Santa Fe, New Mexico 87504-2088

AMENDED REPORT

WELL LOCATION AND ACREAGE DEDICATION PLAT

API Number	Pool Code	Pool Name
		Undes. Winchester; Morrow
Property Code	Property Name	Well Number
	MARLIN "32" STATE	1
OGRID No.	Operator Name	Elevation
14744	MEWBOURNE OIL COMPANY	3282

Surface Location

UL or lot No.	Section	Township	Range	Lot Idn	Feet from the	North/South line	Feet from the	East/West line	County
L	32	19S	29E		1650	SOUTH	990	WEST	EDDY

Bottom Hole Location If Different From Surface

UL or lot No.	Section	Township	Range	Lot Idn	Feet from the	North/South line	Feet from the	East/West line	County

Dedicated Acres	Joint or Infill	Consolidation Code	Order No.
320			

NO ALLOWABLE WILL BE ASSIGNED TO THIS COMPLETION UNTIL ALL INTERESTS HAVE BEEN CONSOLIDATED OR A NON-STANDARD UNIT HAS BEEN APPROVED BY THE DIVISION

OPERATOR CERTIFICATION

I hereby certify that the information contained herein is true and complete to the best of my knowledge and belief.

Kristi Green
Signature

Kristi Green
Printed Name

Hobbs Regulatory
Title

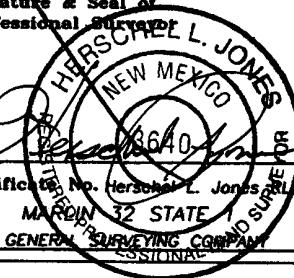
9/1/05
Date

SURVEYOR CERTIFICATION

I hereby certify that the well location shown on this plat was plotted from field notes of actual surveys made by me or under my supervision, and that the same is true and correct to the best of my belief.

9/01/2005
Date Surveyed

Herschel L. Jones
Signature & Seal of Professional Surveyor



Certificate No. Herschel L. Jones 3640
MARLIN 32 STATE
GENERAL SURVEYING COMPANY
PROFESSIONAL

0 330' 660' 990' 1650' 1980' 2310' 2310' 1980' 1650' 990' 660' 330' 0'

MULTI-POINT SURFACE USE AND OPERATIONS PLAN

MEWBOURNE OIL COMPANY

Marlin 32 State #1
1650' FSL & 990' FWL
Section 32-T19S-R29E
Eddy County, New Mexico

This plan is submitted with Form 3160-3, Application for Permit to Drill, Covering the above described well. The purpose of this plan is to describe the location of the proposed well, the proposed construction activities and operations plan, the magnitude of the surface disturbance involved, and the procedures to be followed in restoring the surface so that a complete appraisal can be made of the environmental impact associated with the proposed operations.

1. Existing Roads:

- A. Exhibit #3 is a road map showing the location of the proposed well. Exhibit #3A is a topographic map showing the location of the proposed well and access road. Existing roads are highlighted in red and proposed roads are highlighted in yellow.
- B. **Directions to location from Carlsbad: Go east on Hwy 62/180 to MM 44. Turn north on CR243 (Magnum Rd). Go to Junction of CR243 & CR238 (Burton Flats Road). Turn west on CR238 & go 2 miles to junction of Buckskin road & CR238. Go approx 4 miles north on CR242. Turn east & go 1 mile. Turn south & go ½ mile to existing well. Continue south 1.5 miles on new lease road to new location.**

2. Proposed Access Road:

- A. 1600' of new road will be needed.
- B. Access to the location will be limited to 16' in width and will adequately drain runoff and control erosion as presently constructed.

3. Location of Existing and/or Proposed Facilities:

- A. There are no production facilities on this lease at the present time.
- B. In the event that the well is productive, production facilities will be located on the well pad.
- C. All production vessels left on location will be painted to conform with BLM painting stipulations within 180 days of installation.

4. Location and Type of Water Supply

The well will be drilled with a combination of fresh water and brine water based mud systems. The water will be obtained from commercial suppliers in the area and/or hauled to the location by transport trucks over existing and proposed roads as indicated in Exhibit #3.

5. Source of Construction Materials

All material required for construction of the drill pad and access roads will be obtained from private, state, or federal pits. The construction contractor will be solely responsible for securing construction materials required for this operation and paying any royalties that may be required on those materials.

6. Methods of Handling Waste Disposal:

- A. Drill cuttings not retained for evaluation purposed will be disposed of in the reserve pit.
- B. Drilling fluids will be allowed to evaporate in the reserve pit prior to closure.
- C. Water produced during operations will be disposed of in the reserve pit.
- D. If any liquid hydrocarbons are produced during operations, those liquids will be stored in suitable tanks until sold.
- E. Current regulations regarding the proper disposal of human waste will be followed.
- F. All trash, junk, and other waste materials will be stored in proper containers to prevent dispersal and will be removed to an appropriate facility within one week of cessation of drilling and completion activities.

7. Ancillary Facilities

There are no ancillary facilities within the immediate vicinity of the proposed well site.

8. Well Site Layout

- A. A diagram of the drill pad is shown in Exhibit #5. Dimensions of the pad, pits, and location of major rig components are shown.
- B. The reserve pit will be lined with a high quality plastic sheeting to prevent migration of fluids.
- C. The pad dimension of 400' X 250' has been staked and flagged.

9. Plans for Restoration of Surface

- A. Upon cessation of the proposed operations, if the well is abandoned, the location and road will be ripped and re-seeded. The reserve pit area, after allowing to dry will be leveled. The entire location will be restored to the original contour as much as reasonable possible. All trash, garbage, and pit lining will be hauled to appropriate disposal to assure the location is aesthetically pleasing as reasonable possible. All restoration work will be completed within 180 days of cessation of activities.
- B. The disturbed area will be restored by re-seeding during the proper growing season.
- C. Three sides of the reserve pit will be fenced prior to and during drilling operations. The reserve pit will be fenced on the fourth side after the drilling rig is removed to prevent the endangerment of livestock. The fence will remain in place until the pit area has been leveled and restored.
- D. Upon cessation of the proposed operations, if the well is not abandoned, the reserve pit area will be restored as per OCD guidelines. Any additional caliche required for production facilities will be obtained from a source as described in Section 6.
- E. Within 90 days of cessation of drilling and completion operations, all equipment not necessary for production operations will be removed. The location will be cleaned of all trash and junk to assure the well site is left as aesthetically pleasing as reasonably possible.

10. Surface Ownership:

The surface is owned by: JR Engineering & Construction
% Jimmy Ray Richardson
PO Box 487
Carlsbad, NM 88221

11. Other Information:

- A. Topography: Refer to the archaeological report for a detailed description of flora, fauna, soil characteristics, dwellings, and historical or cultural sites.
- B. The primary use of the surface at the location is for grazing of livestock.

12. Operator's Representative:

- A. Through APD approval, drilling, completion and production operations:

N.M. Young, District Manager
Mewbourne Oil Company
PO Box 5270
Hobbs, NM 88241
505-393-5905

13. Certification

I hereby certify that I, or persons under my direct supervision, have inspected the proposed drill site and access route; that I am familiar with the conditions which currently exist; that the statements made in this plan are to the best of my knowledge, true and correct; and the work associated with the operations proposed herein will be performed by Mewbourne Oil Company, its contractors and subcontractors, in accordance with this plan and the terms and conditions under which it is approved. This statement is subject to the provisions of 18 U.S.C. 1001 for the filing of a false statement.

Date: *Keith Green for NM Young* Signature: 09/08/05

N.M. Young, District Manager
Mewbourne Oil Company
PO Box 5270
Hobbs, NM 88241
(505) 393-5905

Hydrogen Sulfide Drilling Operations Plan

Mewbourne Oil Company

Marlin 32 State #1

1650' FSL & 990' FWL

Section 32-T19S-R29E

Eddy County, New Mexico

1. General Requirements

Rule 118 does not apply to this well because MOC has researched this area and no high concentrations of H₂S were found. MOC will have on location and working all H₂S safety equipment before the Tansill formation @ 950' for purposes of safety and insurance requirements.

2. Hydrogen Sulfide Training

All personnel, whether regularly assigned, contracted, or employed on an unscheduled basis, will have received training from a qualified instructor in the following areas prior to entering the drilling pad area of the well:

1. The hazards and characteristics of hydrogen sulfide gas.
2. The proper use of personal protective equipment and life support systems.
3. The proper use of hydrogen sulfide detectors, alarms, warning systems, briefing areas, evacuation procedures.
4. The proper techniques for first aid and rescue operations.

Additionally, supervisory personnel will be trained in the following areas:

- 1 The effects of hydrogen sulfide on metal components. If high tensile tubular systems are utilized, supervisory personnel will be trained in their special maintenance requirements.
- 2 Corrective action and shut in procedures, blowout prevention, and well control procedures while drilling a well.
- 3 The contents of the Hydrogen Sulfide Drilling Operations Plan.

There will be an initial training session prior to encountering a known hydrogen sulfide source. The initial training session shall include a review of the site specific Hydrogen Sulfide Drilling Operations Plan.

3. Hydrogen Sulfide Safety Equipment and Systems

All hydrogen sulfide safety equipment and systems will be installed, tested, and operational prior to drilling below the intermediate casing.

1. Well Control Equipment

- A. Flare line with automatic igniter or continuous ignition source.
- B. Choke manifold with minimum of one adjustable choke.
- C. Blowout preventers equipped with blind rams and pipe rams to accommodate all pipe sizes with properly sized closing unit
- D. Auxiliary equipment including rotating head and annular type blowout preventer.

2. Protective Equipment for Essential Personnel

Thirty minute self contained work unit located at briefing area as indicated on wellsite diagram.

3. Hydrogen Sulfide Protection and Monitoring Equipment

Two portable hydrogen sulfide monitors positioned on location for optimum coverage and detection. The units shall have audible sirens to notify personnel when hydrogen sulfide levels exceed 20 ppm.

4. Visual Warning Systems

A. Wind direction indicators as indicated on the wellsite diagram.

B. Caution signs shall be posted on roads providing access to location. Signs shall be painted a high visibility color with lettering of sufficient size to be readable at reasonable distances from potentially contaminated areas.

4. **Mud Program**

The mud program has been designed to minimize the amount of hydrogen sulfide entrained in the mud system. Proper mud weight, safe drilling practices, and the use of hydrogen sulfide scavengers will minimize hazards while drilling the well.

5. **Metallurgy**

All tubular systems, wellheads, blowout preventers, drilling spools, kill lines, choke manifolds, and valves shall be suitable for service in a hydrogen sulfide environment when chemically treated.

6. **Communications**

State & County Officials phone numbers are posted on rig floor and supervisors trailer. Communications in company vehicles and toolpushers are either two way radios or cellular phones.

7. **Well Testing**

Drill stem testing is not an anticipated requirement for evaluation of this well. A drill stem test is required, it will be conducted with a minimum number of personnel in the immediate vicinity. The test will be conducted during daylight hours only.

Notes Regarding Blowout Preventer

Mewbourne Oil Company

Marlin 32 State #1

1650' FSL & 990' FWL

Section 32-T19S-R29E

Eddy County, New Mexico

1. Drilling nipple (bell nipple) to be constructed so that it can be removed without the use of a welder through the opening of the rotary table, with minimum internal diameter equal to blowout preventer bore.
2. Blowout preventer and all fittings must be in good condition with a minimum 5000 psi working pressure.
3. Safety valve must be available on the rig floor at all times with proper connections to install in the drill string. Valve must be full bore with minimum 5000 psi working pressure.
4. Equipment through which bit must pass shall be at least as large as internal diameter of the casing.
5. A kelly cock shall be installed on the kelly at all times.
6. Blowout preventer closing equipment to include and accumulator of at least 40 gallon capacity, two independent sources of pressure on closing unit, and meet all other API specifications.

Mewbourne Oil Company
 BOP Schematic for
 12 1/4" Hole

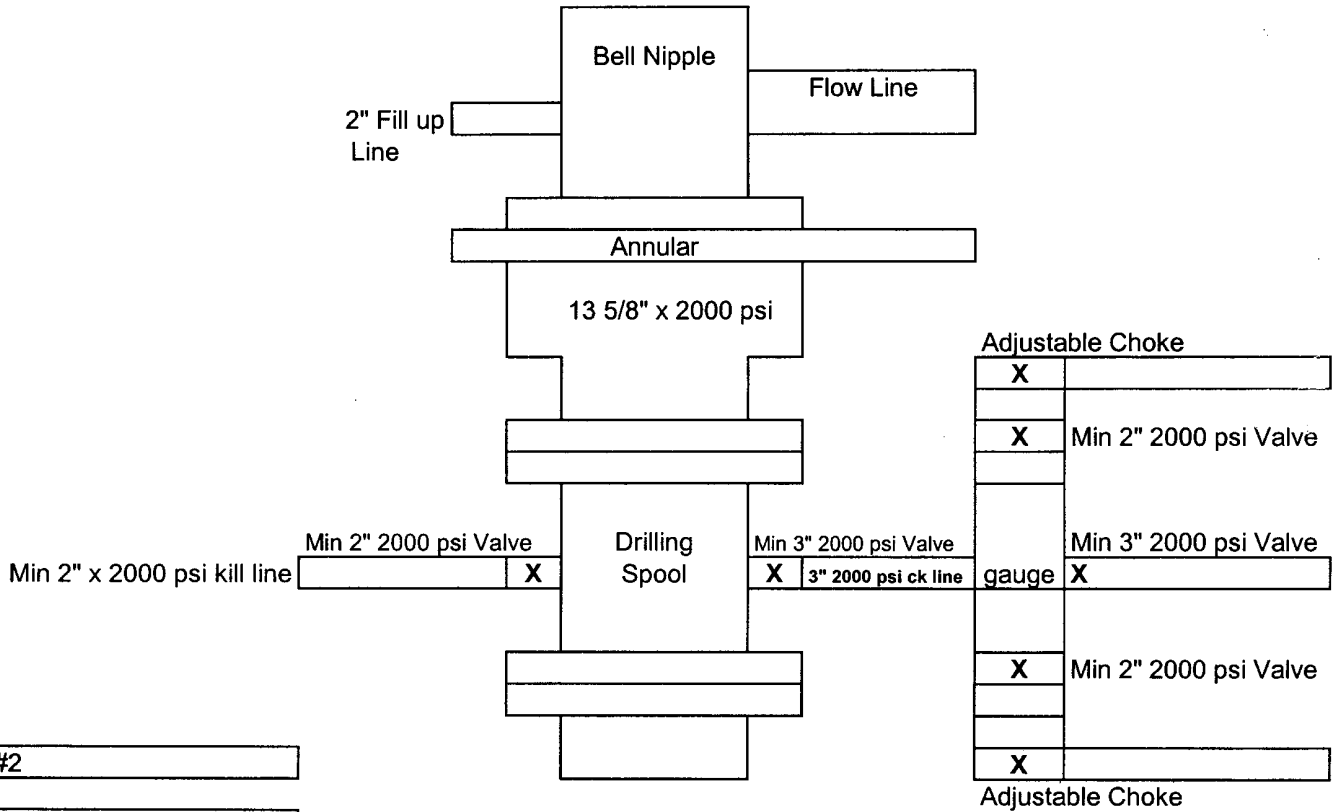


Exhibit #2

Marlin 32 State #1
 1650' FSL & 990' FWL
 Sec 32-T19S-R29E
 Eddy, County
 New Mexico

Mewbourne Oil Company
 BOP Scematic for
 8 3/4" or 7 7/8" Hole

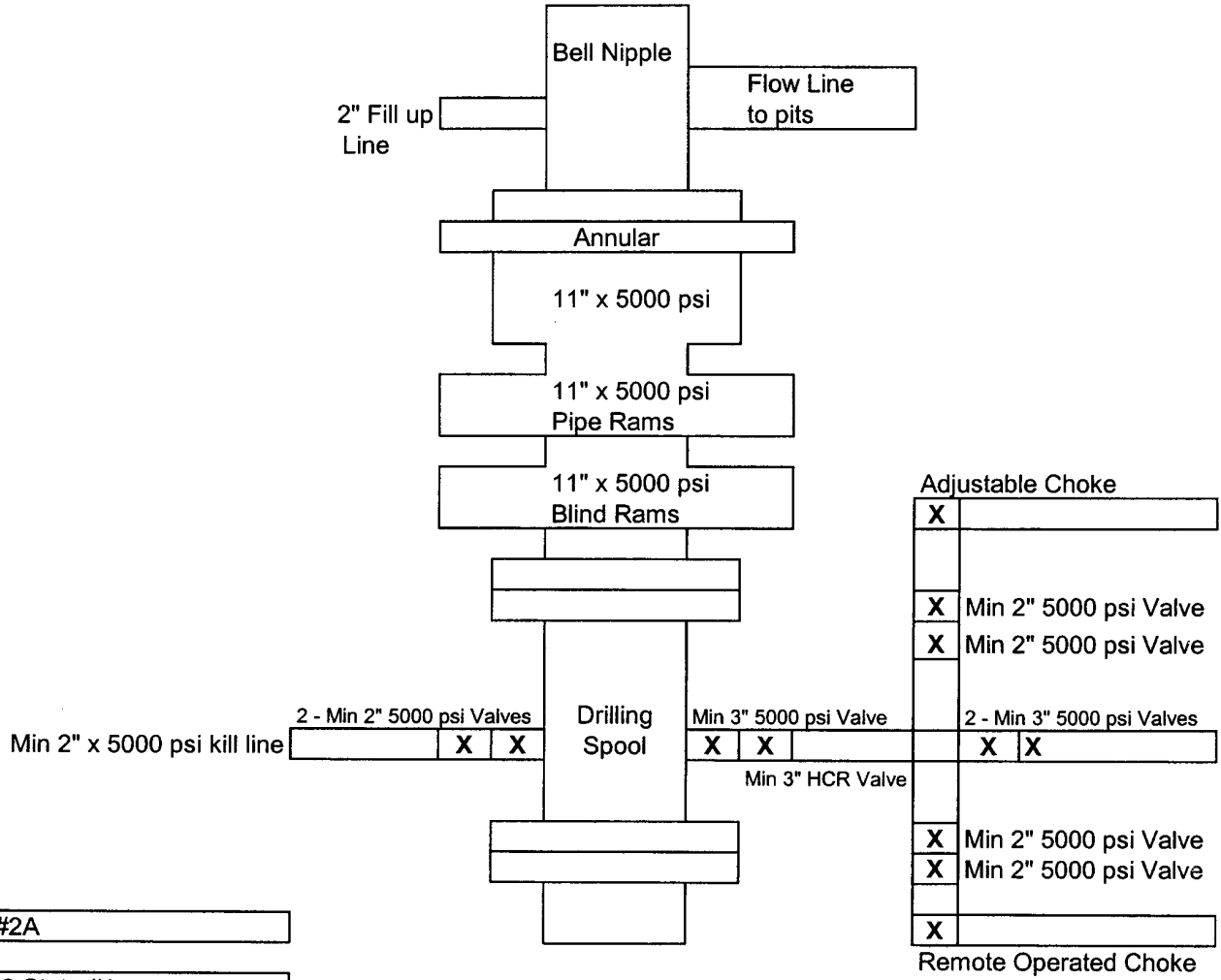
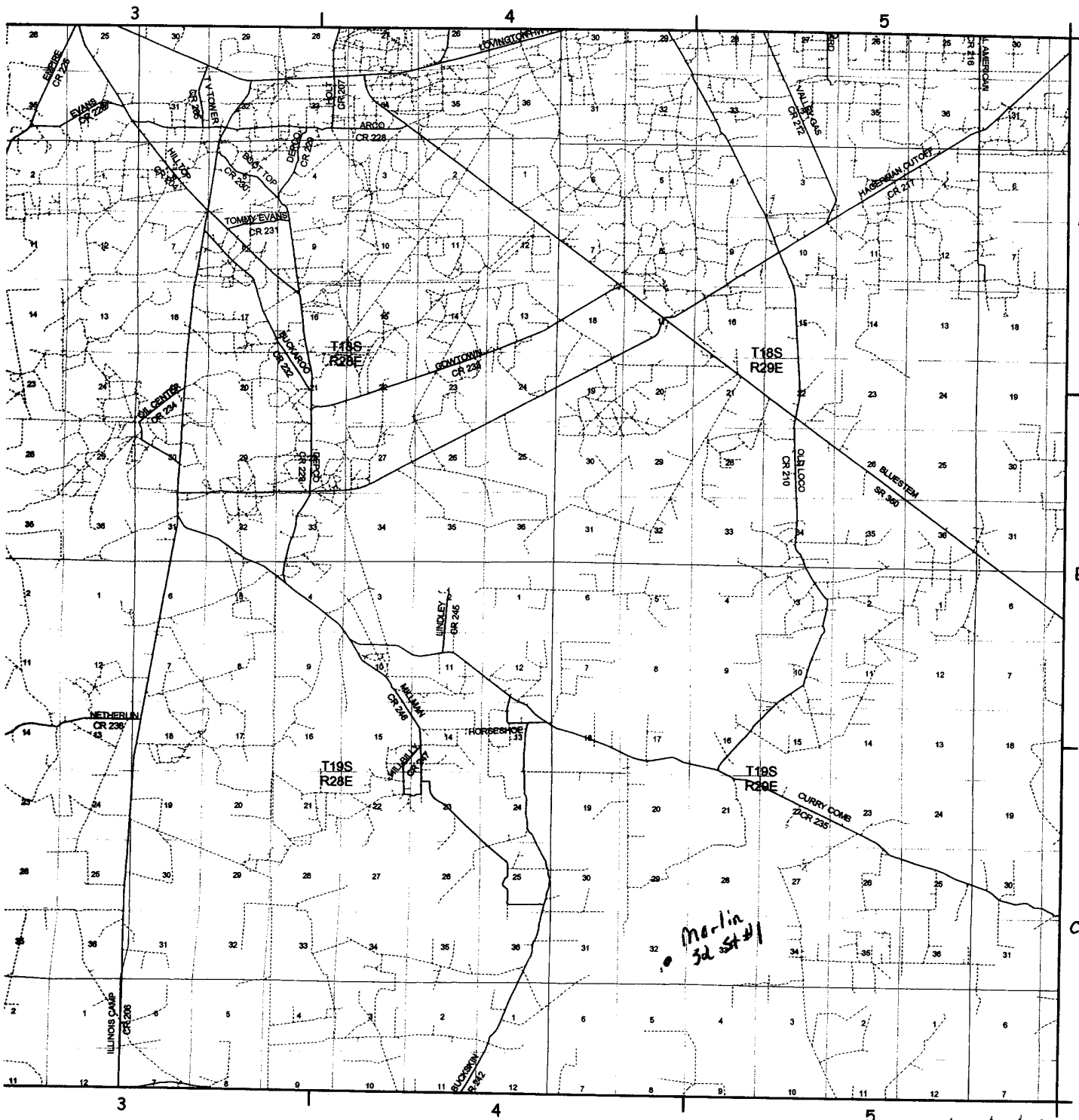


Exhibit #2A

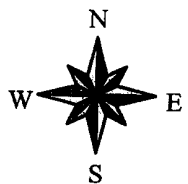
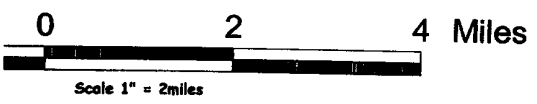
Marlin 32 State #1
 1650' FSL & 990' FWL
 Sec 32-T19S-R29E
 Eddy, County
 New Mexico



Continued on Page 10

Continued on Page 12

Exhibit 3



CGIS
 Cooperative Geographic Information System

REV. 05/27/2004

SECTION 32, TOWNSHIP 19 SOUTH, RANGE 29 EAST, NMPM, EDDY COUNTY, NEW MEXICO.

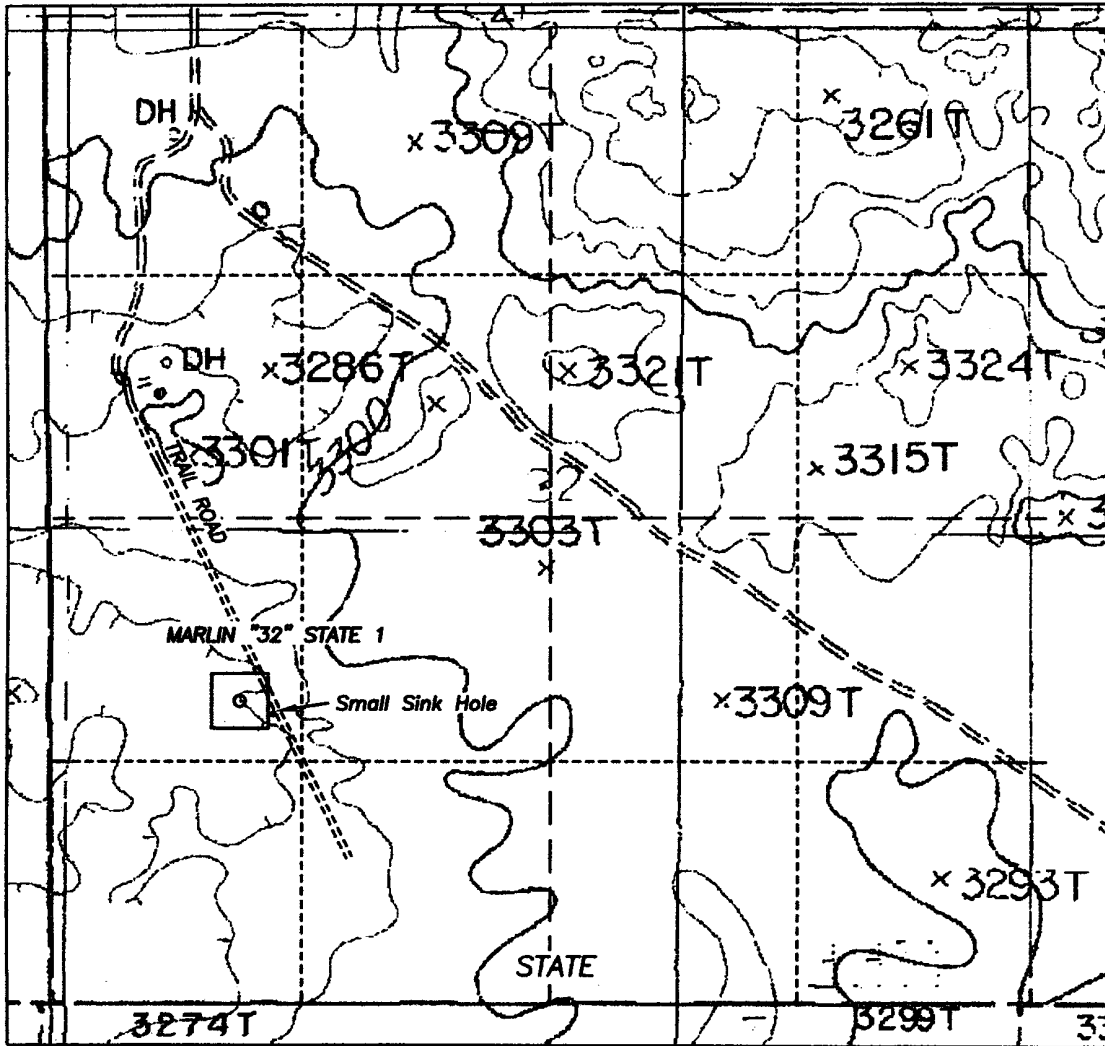


Exhibit 3A

1000' 0 1000' 2000'
Scale 1" = 1000'

THE PREPARATION OF THIS PLAT AND THE PERFORMANCE OF THE SURVEY UPON WHICH IT IS BASED WERE DONE UNDER MY DIRECTION AND THE PLAT ACCURATELY DEPICTS THE RESULTS OF SAID SURVEY AND MEET THE REQUIREMENTS OF THE STANDARDS FOR LAND SURVEYS IN NEW MEXICO AS ADOPTED BY THE NEW MEXICO STATE BOARD OF REGISTRATION FOR PROFESSIONAL ENGINEERS AND LAND SURVEYORS.

[Signature]
HERSCHEL JONES, R.L.S. No. 3640
REGISTERED PROFESSIONAL LAND SURVEYOR FOR NEW MEXICO
3848

GENERAL SURVEYING COMPANY, P.O. BOX 1928
LOVINGTON, NEW MEXICO 88260

MEWBOURNE OIL COMPANY

LEASE ROAD TO ACCESS THE MEWBOURNE MARLIN #32 STATE #1 WELL, LOCATED IN SECTION 32, TOWNSHIP 19 SOUTH, RANGE 29 EAST, NMPM, EDDY COUNTY, NEW MEXICO.

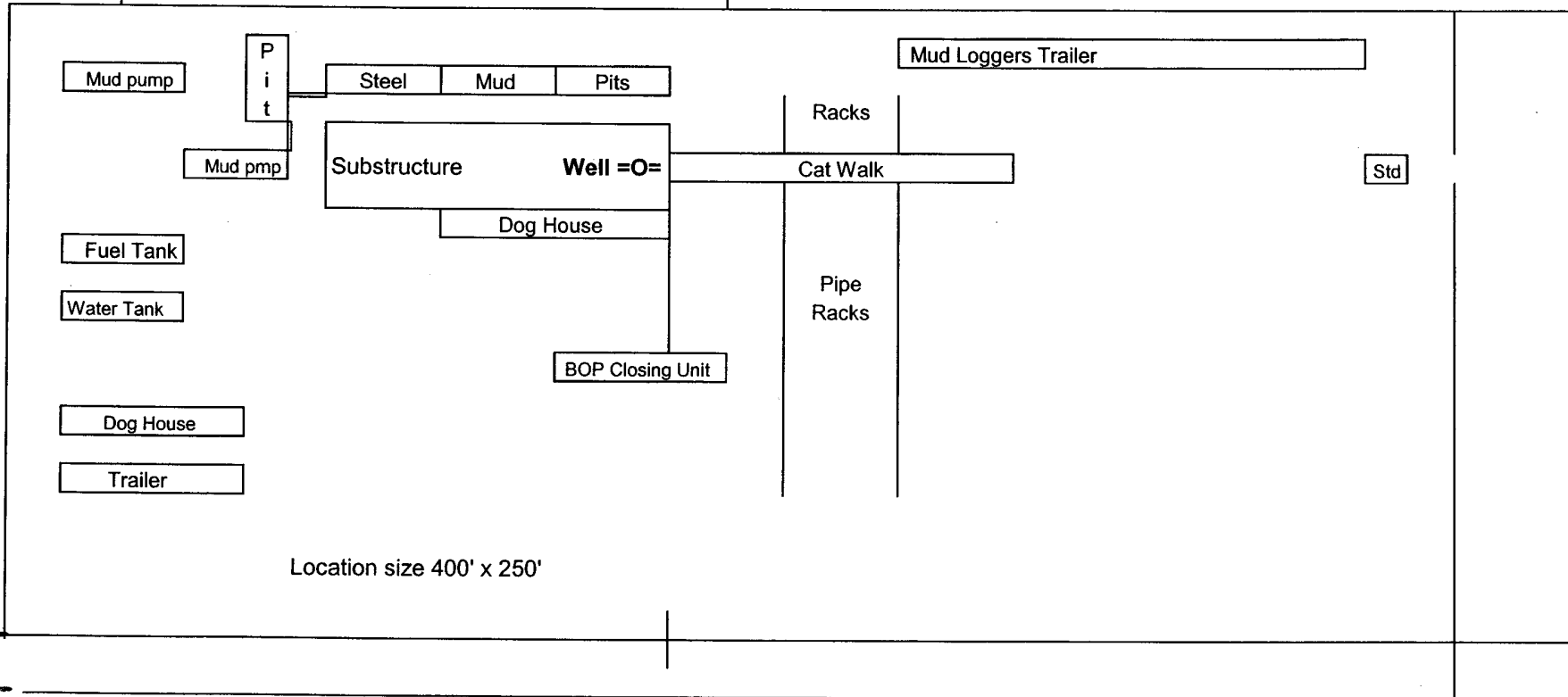
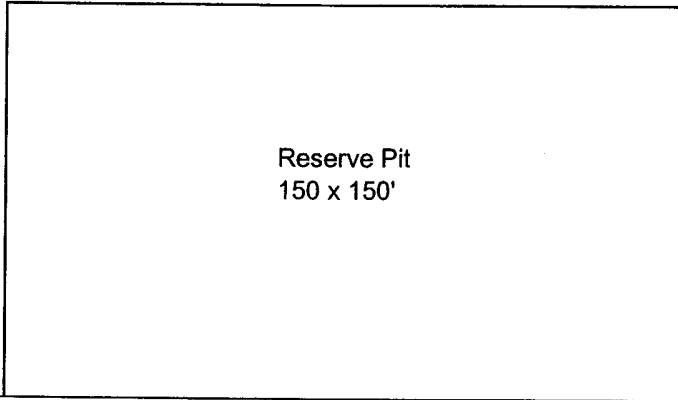
Survey Date: 9/01/2005	Sheet 1 of 1 Sheets
Drawn By: Ed Blevins	W.O. Number
Date: 9/01/05	Scale 1" = 1000' PECOS RVR

Mewbourne Oil Company

Exhibit #5

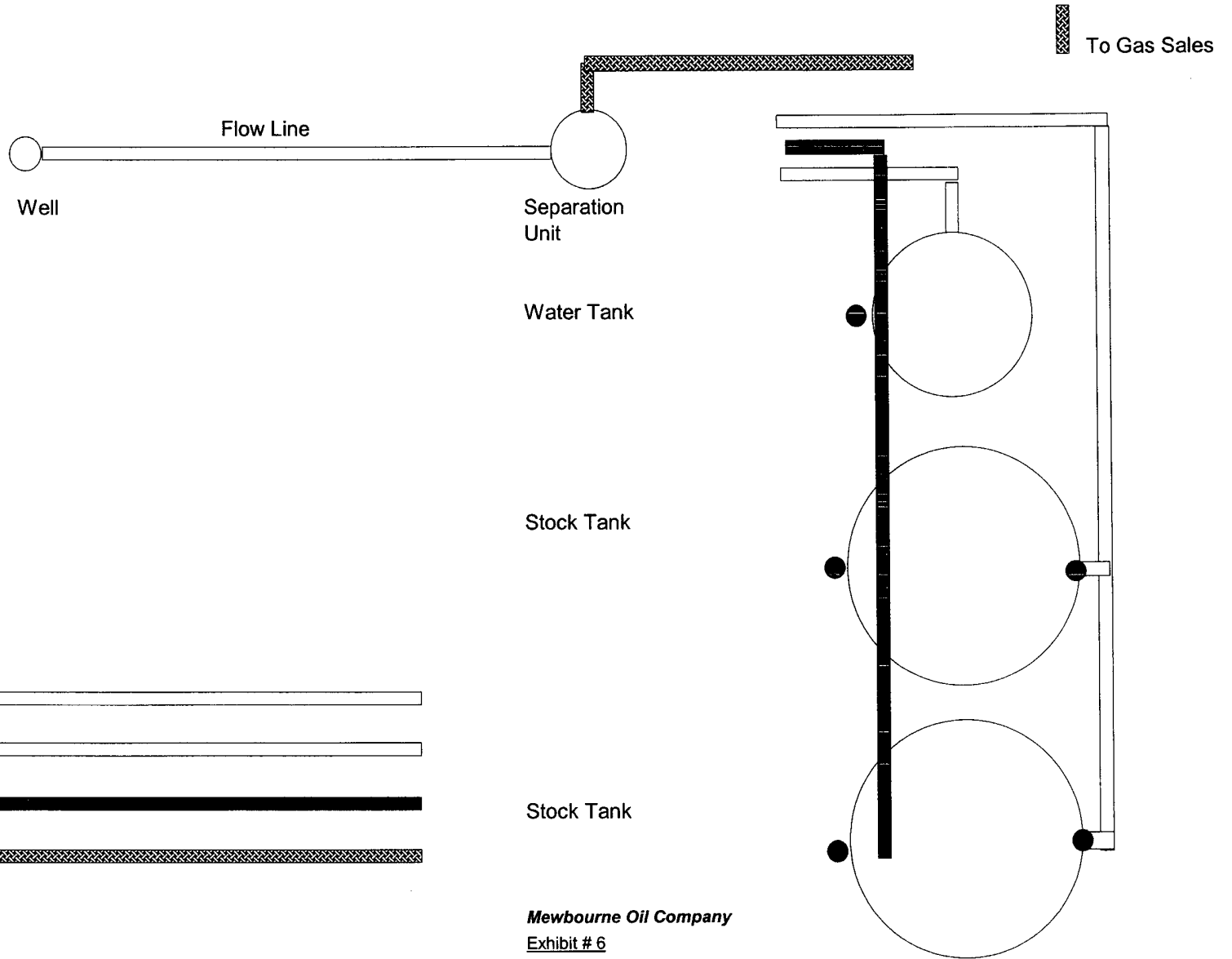
N


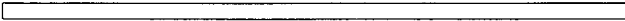




Well Name Marlin 32 State #1
Footages 1650' FSL & 990' FWL
STR Sec 32-T19S-R29E
County Eddy, County
State New Mexico



Rig Location Schematic

Proposed Production Facilities Schematic



- Flow Line 
- Water Line 
- Oil Dump Line 
- Gas Sales Line 
- Sealing Valve 
- Non Sealing Valve 

Mewbourne Oil Company
 Exhibit # 6
 Proposed Production Facilities Schematic

Marlin 32 State #1
 1650' FSL & 990' FWL
 Sec 32-T19S-R29E
 Eddy, County
 New Mexico

DISTRICT I
1420 N. French Dr., Hobbs, NM 88240

STATE OF NEW MEXICO
Energy, Minerals and Natural Resources Department

Revised March 17, 1999
Instruction on back
Submit to Appropriate District Office
State Lease - 4 Copies
Fee Lease - 3 Copies

DISTRICT II
811 South First, Artesia, NM 80510

DISTRICT III
1000 No Spruce Rd., Aztec, NM 87410

DISTRICT IV
2040 South Pacheco, Santa Fe, NM 87505

OIL CONSERVATION DIVISION
P.O. Box 2088
Santa Fe, New Mexico 87504-2088

AMENDED REPORT

WELL LOCATION AND ACREAGE DEDICATION PLAT

AFT Number	Pool Code 876cc	Pool Name Winchester	Morrow
Property Code	Property Name MARLIN "J2" STATE		Well Number 1
OWNER No. 14744	Operator Name MEWBOURNE OIL COMPANY		Elevation 3282

Surface Location

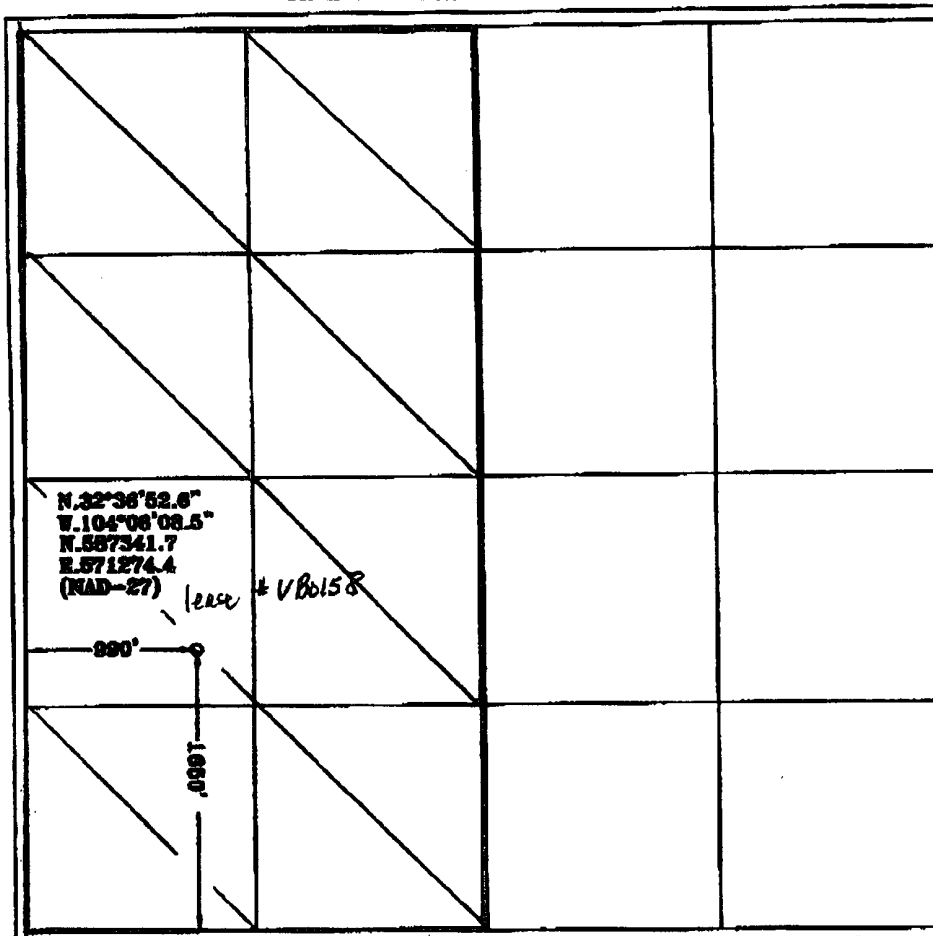
UL or lot No.	Section	Township	Range	Lot 1/4	Feet from the	North/South line	Feet from the	East/West line	County
L	32	19S	29E		1650	SOUTH	990	WEST	EDDY

Bottom Hole Location If Different From Surface.

UL or lot No.	Section	Township	Range	Lot 1/4	Feet from the	North/South line	Feet from the	East/West line	County

Dedicated Acres	Joint or Infill	Consolidation Code	Order No.
3.0			

NO ALLOWABLE WILL BE ASSIGNED TO THIS COMPLETION UNTIL ALL INTERESTS HAVE BEEN CONSOLIDATED
OR A NON-STANDARD UNIT HAS BEEN APPROVED BY THE DIVISION



OPERATOR CERTIFICATION

I hereby certify the the information contained herein to true and complete to the best of my knowledge and belief.

Kristi Green
Signature

Kristi Green
Printed Name

Hobbs Regulatory
Title

9/7/05
Date

SURVEYOR CERTIFICATION

I hereby certify that the well location shown on this plat was plotted from field notes of actual surveys made by me or under my supervision, and that the same is true and correct to the best of my belief.

8/01/2005
Date Surveyed

L. Jones
Signature & Seal of Professional Surveyor

HERSCHEL L. JONES
NEW MEXICO
3640
Certification No. 10000 L. Jones 35-90
MARLIN "J2" STATE
GENERAL SURVEY COMPANY
RESIDUAL

0 330 660 990 1650 1980 2310 2510 1980 1650 990 660 330 0'

DISTRICT I
1425 N. French Dr., Hobbs, NM 88240

STATE OF NEW MEXICO
Energy, Minerals and Natural Resources Department

Revised March 27, 1998
Instruction on back
Submit to Appropriate District Office
State Lease - 4 Copies
Fee Lease - 3 Copies

DISTRICT II
811 South First, Artesia, NM 80310

DISTRICT III
1000 Rio Grande Rd., Aztec, NM 87410

DISTRICT IV
2540 South Fairview, Santa Fe, NM 87505

OIL CONSERVATION DIVISION
P.O. Box 2088
Santa Fe, New Mexico 87504-2088

AMENDED REPORT

WELL LOCATION AND ACREAGE DEDICATION PLAT

API Number	Pool Code 876cc	Well Name Winchester	Well Name Morrow
Property Code	Property Name MARLIN "32" STATE		Well Number 1
OGHD No. 14744	Operator Name MEMBOURNE OIL COMPANY		Elevation 3282

Surface Location

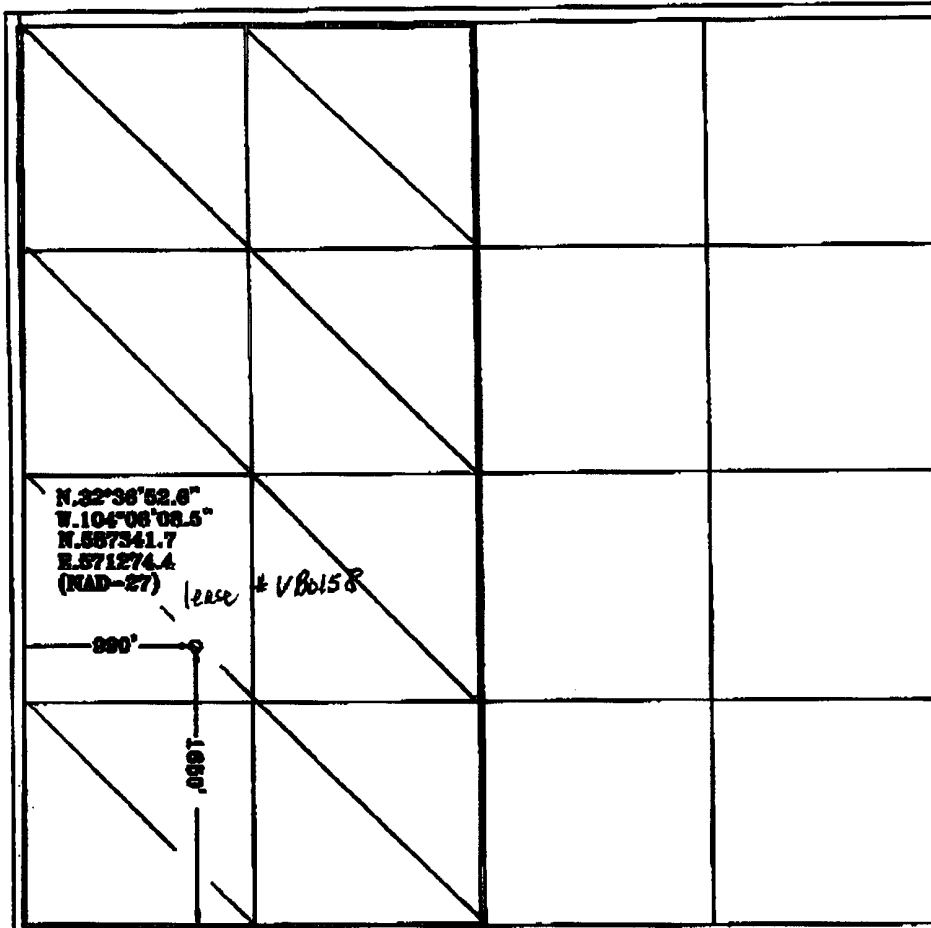
UL or lot No.	Section	Township	Range	Lot 1/4n	Feet from the	North/South line	Feet from the	East/West line	County
L	32	19S	29E		1650	SOUTH	990	WEST	EDDY

Bottom Hole Location if Different From Surface

UL or lot No.	Section	Township	Range	Lot 1/4n	Feet from the	North/South line	Feet from the	East/West line	County

Dedicated Acres 3.0	Joint or Infill	Consolidation Code	Order No.
------------------------	-----------------	--------------------	-----------

NO ALLOWABLE WILL BE ASSIGNED TO THIS COMPLETION UNTIL ALL INTERESTS HAVE BEEN CONSOLIDATED OR A NON-STANDARD UNIT HAS BEEN APPROVED BY THE DIVISION



OPERATOR CERTIFICATION

I hereby certify the information contained herein to be true and complete to the best of my knowledge and belief.

Kristi Green
Signature

Kristi Green
Printed Name

Hobbs Regulatory
Title

9/7/05
Date

SURVEYOR CERTIFICATION

I hereby certify that the well location shown on this plat was plotted from field notes of actual survey made by me or under my supervision, and that the same is true and correct to the best of my belief.

9/01/2005
Date Surveyed

[Signature]
Signature & Seal of Professional Surveyor

HERSCHEL L. JONES
NEW MEXICO
3640
Certification No. Herschel L. Jones 3640
MARLIN STATE
GENERAL SURVEYING COMPANY
SANTA FE, NEW MEXICO

0 330' 660' 990' 1320' 1650' 1980' 2310' 2640' 2970' 3300' 0'