

DISTRICT I
1625 N. FRENCH DR., HOBBS, NM 88240
Phone: (575) 393-6161 Fax: (575) 393-0720

DISTRICT II
611 S. FIRST ST., ARTESIA, NM 88210
Phone: (575) 748-1283 Fax: (575) 748-9720

DISTRICT III
1000 RIO BRAZOS RD., AZTEC, NM 87410
Phone: (505) 334-6178 Fax: (505) 334-6170

DISTRICT IV
1820 S. ST. FRANCIS DR., SANTA FE, NM 87505
Phone: (505) 478-3460 Fax: (505) 478-3462

State of New Mexico
Energy, Minerals & Natural Resources Department
OIL CONSERVATION DIVISION
1220 SOUTH ST. FRANCIS DR.
Santa Fe, New Mexico 87505

OCD - HOBBS
09/26/2018
RECEIVED

Form C-102
Revised August 1, 2011
Submit one copy to appropriate
District Office

☐ AMENDED REPORT

WELL LOCATION AND ACREAGE DEDICATION PLAT

API Number 30-025- 45233	Pool Code 97895	WC-025 G-08 S213304D; BONE SPRING Wildcat; Bone Spring
Property Code 322447	Property Name HUCKLEBERRY STATE COM	Well Number 503H
OGRID No. 229137	Operator Name COG OPERATING, LLC	Elevation 3743.9'

Surface Location

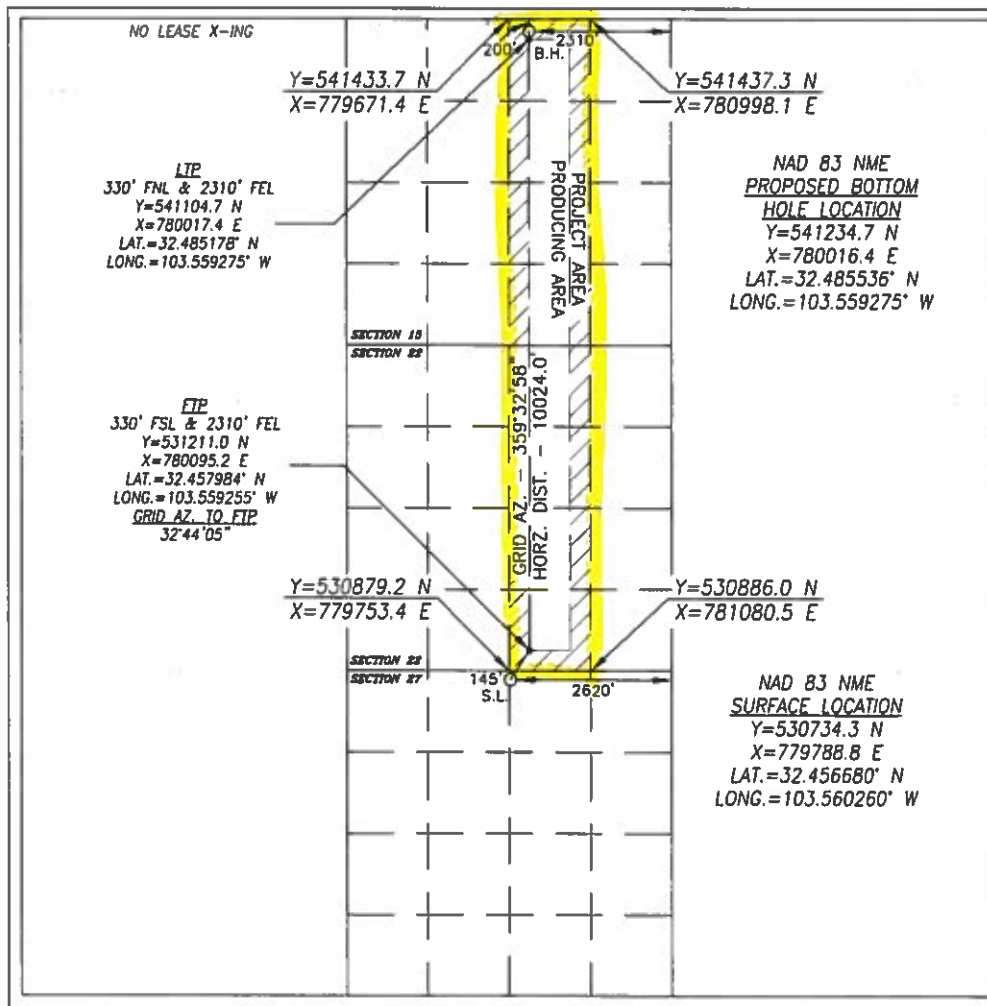
UL or lot No.	Section	Township	Range	Lot Idn	Feet from the	North/South line	Feet from the	East/West line	County
B	27	21-S	33-E		145	NORTH	2620	EAST	LEA

Bottom Hole Location If Different From Surface

UL or lot No.	Section	Township	Range	Lot Idn	Feet from the	North/South line	Feet from the	East/West line	County
B	15	21-S	33-E		200	NORTH	2310	EAST	LEA

Dedicated Acres	Joint or Infill	Consolidation Code	Order No.
320			

**NO ALLOWABLE WILL BE ASSIGNED TO THIS COMPLETION UNTIL ALL INTERESTS HAVE BEEN CONSOLIDATED
OR A NON-STANDARD UNIT HAS BEEN APPROVED BY THE DIVISION**



OPERATOR CERTIFICATION

I hereby certify that the information herein is true and complete to the best of my knowledge and belief, and that this organization either owns a working interest or unleased mineral interest in the land including the proposed bottom hole location or has a right to drill this well at this location pursuant to a contract with an owner of such mineral or working interest, or to a voluntary pooling agreement or a compulsory pooling order heretofore entered by the division.

Mayte Reyes 9-12-18
Signature Date

Mayte Reyes

Printed Name

mreyes1@concho.com

E-mail Address

SURVEYOR CERTIFICATION

I hereby certify that the well location shown on this plat was plotted from field notes of actual surveys made by me or under my supervision, and that the same is true and correct to the best of my belief.

AUGUST 1, 2018

Date of Survey

Signature & Seal of Professional Surveyor

CHAD L. HARCROW
NEW MEXICO
17777
LICENSED PROFESSIONAL SURVEYOR
Chad Harcrow 8/15/18
Certificate No. CHAD HARCROW 17777
W.O. # 18-838 DRAWN BY: JH