

District I
1625 N. French Dr., Hobbs, NM 88240
Phone: (575) 393-6161 Fax: (575) 393-0720
District II
811 S. First St., Artesia, NM 88210
Phone: (575) 748-1283 Fax: (575) 748-9720
District III
1000 Rio Brazos Road, Aztec, NM 87410
Phone: (505) 334-6178 Fax: (505) 334-6170
District IV
1220 S. St. Francis Dr., Santa Fe, NM 87505
Phone: (505) 476-3460 Fax: (505) 476-3462

State of New Mexico
Energy, Minerals & Natural Resources Department
OIL CONSERVATION DIVISION
1220 South St. Francis Dr.
Santa Fe, NM 87505

Form C-102
Revised August 1, 2011
Submit one copy to appropriate
District Office

AMENDED REPORT

WELL LOCATION AND ACREAGE DEDICATION PLAT

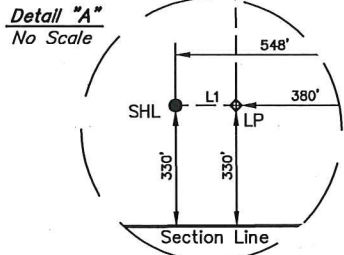
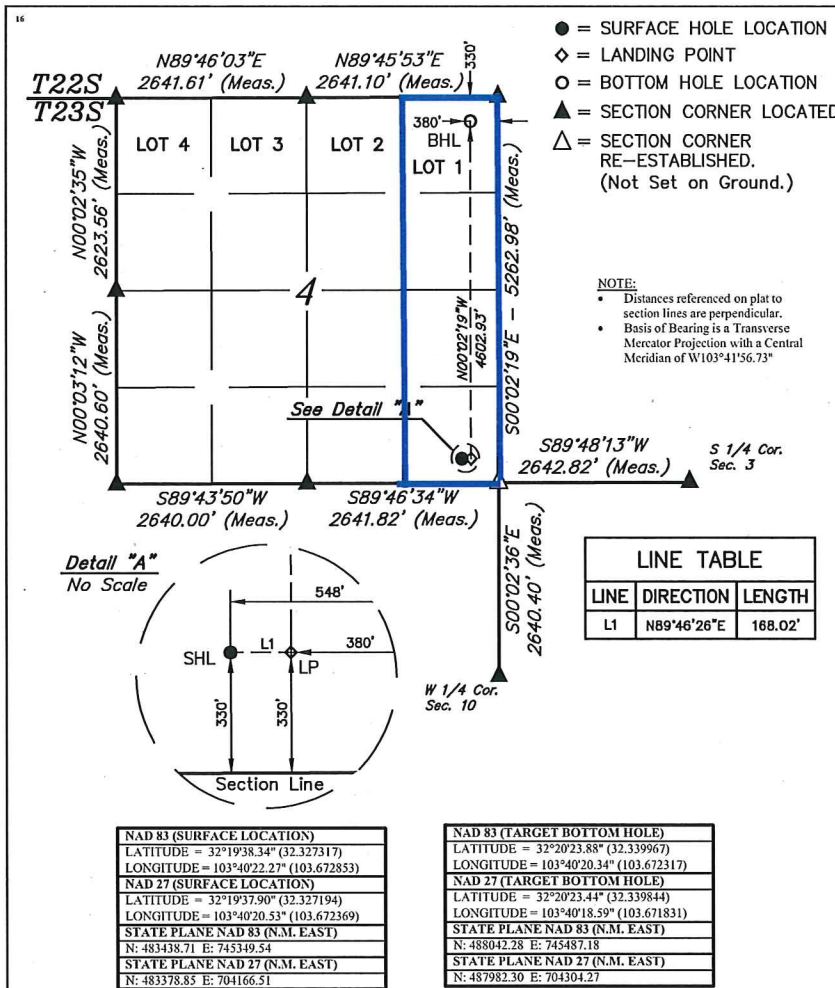
WC-025 G-07 S233204D;BONE

¹ API Number 30-025 46999	² Pool Code 97933	³ Pool Name XXXXX Bone Spring	³ Pool Name SPRING
⁴ Property Code 326104	⁵ Property Name RED TANK 4 FEDERAL COM		⁶ Well Number 13H
⁷ OGRID No. 215099	⁸ Operator Name CIMAREX ENERGY CO.		⁹ Elevation 3691.6'

" Surface Location									
UL or lot no. P	Section 4	Township 23S	Range 32E	Lot Idn	Feet from the 330	North/South line SOUTH	Feet from the 548	East/West line EAST	County LEA

" Bottom Hole Location If Different From Surface									
UL or lot no. I	Section 4	Township 23S	Range 32E	Lot Idn	Feet from the 330	North/South line NORTH	Feet from the 380	East/West line EAST	County LEA
¹² Dedicated Acres 159.46		¹³ Joint or Infill		¹⁴ Consolidation Code		¹⁵ Order No.			

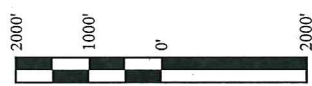
No allowable will be assigned to this completion until all interests have been consolidated or a non-standard unit has been approved by the division.



LINE	DIRECTION	LENGTH
L1	N89°46'26"E	168.02'

NAD 83 (SURFACE LOCATION)	LATITUDE = 32°19'38.34" (32.327317)
	LONGITUDE = 103°40'22.22" (103.672853)
NAD 27 (SURFACE LOCATION)	LATITUDE = 32°19'37.90" (32.327194)
	LONGITUDE = 103°40'20.53" (103.672369)
STATE PLANE NAD 83 (N.M. EAST)	N: 483438.71 E: 745349.54
STATE PLANE NAD 27 (N.M. EAST)	N: 483378.85 E: 704166.51

NAD 83 (TARGET BOTTOM HOLE)	LATITUDE = 32°20'23.88" (32.339967)
	LONGITUDE = 103°40'20.34" (103.672317)
NAD 27 (TARGET BOTTOM HOLE)	LATITUDE = 32°20'23.44" (32.339844)
	LONGITUDE = 103°40'18.59" (103.671831)
STATE PLANE NAD 83 (N.M. EAST)	N: 488042.28 E: 745487.18
STATE PLANE NAD 27 (N.M. EAST)	N: 487982.30 E: 704304.27



DRAWN BY: K.A. 11-14-14

REV: 2 06-08-18 J.A. (NAME CHANGE)

" OPERATOR CERTIFICATION
I hereby certify that the information contained herein is true and complete to the best of my knowledge and belief, and that this organization either owns a working interest or unleased mineral interest in the land including the proposed bottom hole location or has a right to drill this well at this location pursuant to a contract with an owner of such a mineral or working interest, or to a voluntary pooling agreement or a compulsory pooling order heretofore entered by the division.

Aricka Easterling
Signature Date 6/13/18
Aricka Easterling
Printed Name
aeasterling@cimarex.com
E-mail Address

" SURVEYOR CERTIFICATION
I hereby certify that the well location shown on this plat was plotted from field notes of actual surveys made by me or under my supervision, and that the same is true and correct to the best of my belief.

October 22, 2014
Date of Survey
Signature and Seal of Professional Surveyor:
Paul Buchele
PAUL BUCHELE
NEW MEXICO
23782
PROFESSIONAL SURVEYOR
06-08-18

Certificate Number: