

District I
1625 N. French Dr., Hobbs, NM 88240
Phone: (575) 393-6161 Fax: (575) 393-0720
District II
811 S. First St., Artesia, NM 88210
Phone: (575) 748-1283 Fax: (575) 748-9720
District III
1000 Rio Brazos Road, Aztec, NM 87410
Phone: (505) 334-6178 Fax: (505) 334-6170
District IV
1220 S. St. Francis Dr., Santa Fe, NM 87505
Phone: (505) 476-3460 Fax: (505) 476-3462

State of New Mexico
Energy, Minerals & Natural Resources Department
OIL CONSERVATION DIVISION
1220 South St. Francis Dr.
Santa Fe, NM 87505

Form C-102
Revised August 1, 2011
Submit one copy to appropriate
District Office

OCD - HOBBS
03/31/2020
RECEIVED

☒ AMENDED REPORT

WELL LOCATION AND ACREAGE DEDICATION PLAT

¹ API Number 30-025-46023	² Pool Code 53800	³ Pool Name SAND DUNES; BONE SPRING
⁴ Property Code 322236	⁵ Property Name ALLEY CAT 17-20 FED COM	⁶ Well Number 524H
⁷ OGRID No. 6137	⁸ Operator Name DEVON ENERGY PRODUCTION COMPANY, L.P.	⁹ Elevation 3610.0

¹⁰ Surface Location

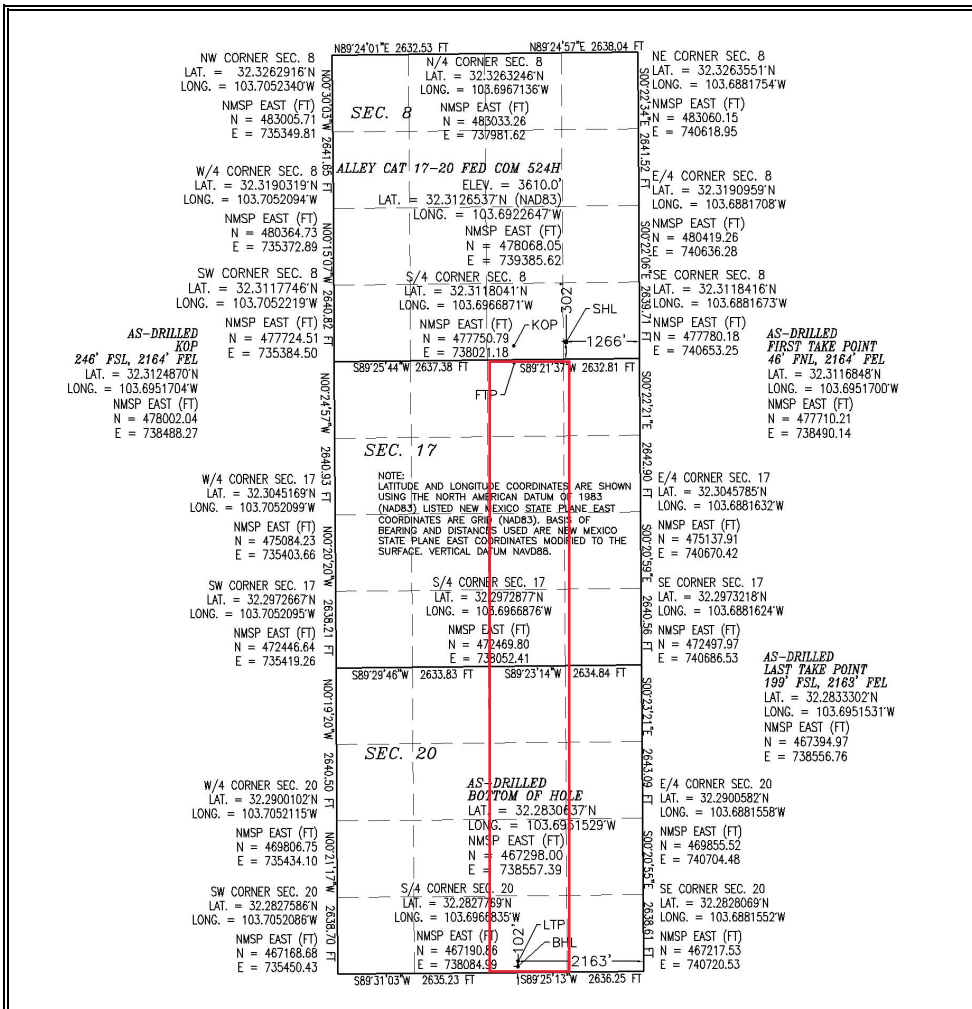
UL or lot no.	Section	Township	Range	Lot Idn	Feet from the	North/South line	Feet from the	East/West line	County
P	8	23 S	32 E		302	SOUTH	1266	EAST	LEA

¹¹ Bottom Hole Location If Different From Surface

UL or lot no.	Section	Township	Range	Lot Idn	Feet from the	North/South line	Feet from the	East/West line	County
O	20	23 S	32 E		102	SOUTH	2163	EAST	LEA

¹² Dedicated Acres 320	¹³ Joint or Infill	¹⁴ Consolidation Code	¹⁵ Order No.
--------------------------------------	-------------------------------	----------------------------------	-------------------------

No allowable will be assigned to this completion until all interests have been consolidated or a non-standard unit has been approved by the division.



¹⁷ OPERATOR CERTIFICATION

I hereby certify that the information contained herein is true and complete to the best of my knowledge and belief, and that this organization either owns a working interest or unleased mineral interest in the land including the proposed bottom hole location or has a right to drill this well at this location pursuant to a contract with an owner of such a mineral or working interest, or to a voluntary pooling agreement or a compulsory pooling order heretofore entered by the division.

Signature: *Jenny Harms* Date: 3-30-2020

Printed Name: JENNY HARMS
E-mail Address: JENNY.HARMS@DVN.COM

¹⁸ SURVEYOR CERTIFICATION

I hereby certify that the well location shown on this plat was plotted from field notes of actual surveys made by me or under my supervision, and that the same is true and correct to the best of my belief.

NOVEMBER 14, 2018
Date of Survey

Signature and Seal of Professional Surveyor: *William F. Jarman*
Certificate Number: FIRM 00076, JARMAN, PLS 12797

SURVEY NO. 6695

Intent ☐ As Drilled ☒

API #
30-025-46023

Operator Name:	Property Name:	Well Number
DEVON ENERGY PRODUCTION CO., L.P.	ALLEY CAT 17-20 FED COM	524H

Kick Off Point (KOP)

UL O	Section 8	Township 23S	Range 32E	Lot	Feet 246	From N/S SOUTH	Feet 2164	From E/W EAST	County LEA
Latitude 32.3124870					Longitude 103.6951704				NAD 83

First Take Point (FTP)

UL B	Section 17	Township 23S	Range 32E	Lot	Feet 46	From N/S NORTH	Feet 2164	From E/W EAST	County LEA
Latitude 32.3116848					Longitude 103.6951700				NAD 83

Last Take Point (LTP)

UL O	Section 20	Township 23S	Range 32E	Lot	Feet 199	From N/S SOUTH	Feet 2163	From E/W EAST	County LEA
Latitude 32.2833302					Longitude 103.6951531				NAD 83

Is this well the defining well for the Horizontal Spacing Unit? ☐

Is this well an infill well? ☐

If infill is yes please provide API if available, Operator Name and well number for Defining well for Horizontal Spacing Unit.

API #

Operator Name:	Property Name:	Well Number

KZ 06/29/2018