

State of New Mexico
Energy, Minerals & Natural Resources Department
OIL CONSERVATION DIVISION
1220 South St. Francis Dr.
Santa Fe, NM 87505

☐ AMENDED REPORT

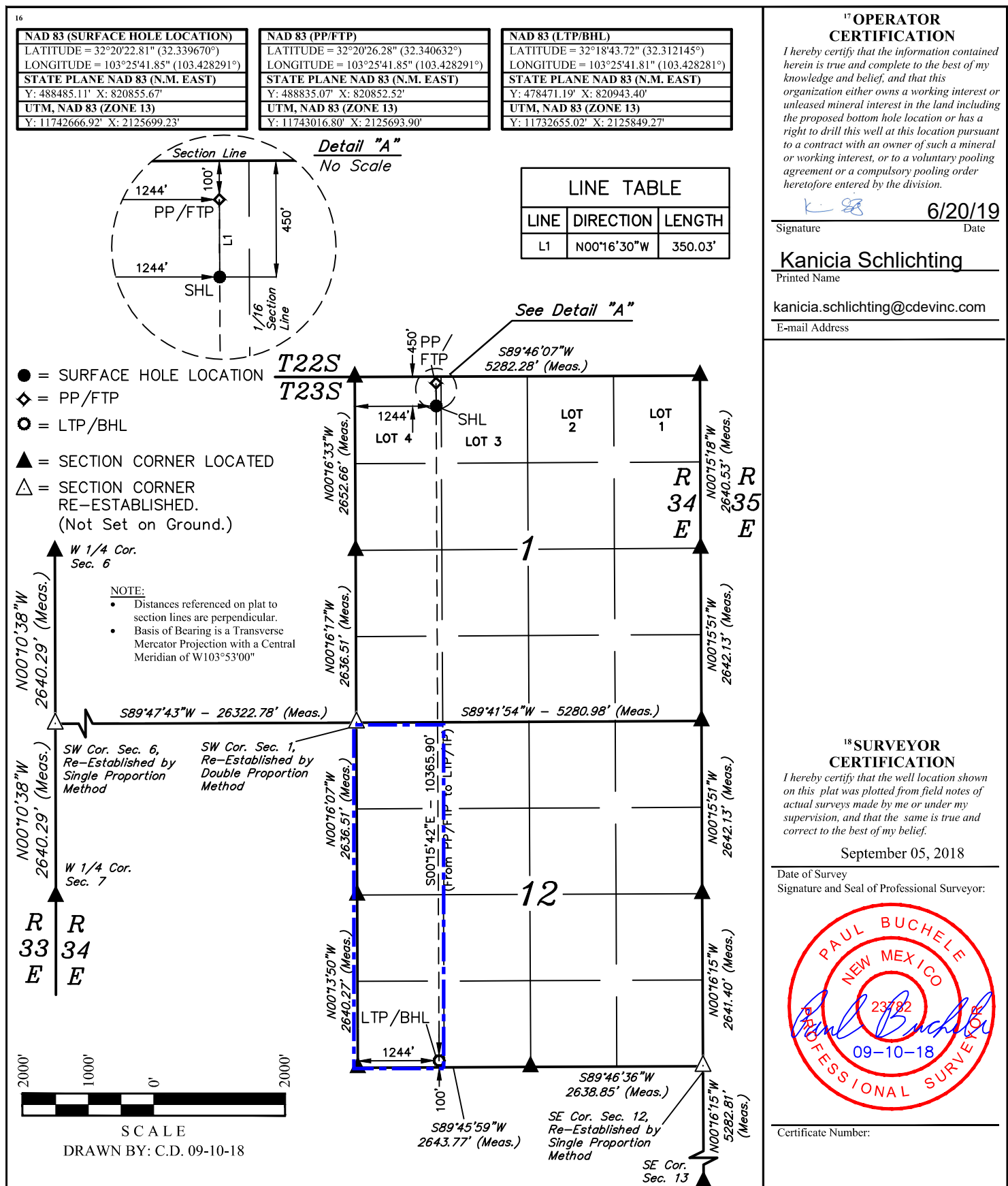
OCD - HOBBS
04/06/2020
RECEIVED

¹ APL Number 30-025-47067		² Pool Code 2205	³ Pool Name Antelope Ridge, Bone Spring, North
⁴ Property Code 326211	⁵ Property Name PAC-MAN 36 FED COM		⁶ Well Number #302H
⁷ OGRID No. 372165	⁸ Operator Name CENTENNIAL RESOURCE PRODUCTION, LLC		⁹ Elevation 3387.2'

UL or lot no.	Section	Township	Range	Lot Idn	Feet from the	North/South line	Feet from the	East/West line	County
4	1	23S	34E		450	NORTH	1244	WEST	LEA

UL or lot no. M	Section 12	Township 23S	Range 34E	Lot Idn	Feet from the 100	North/South line SOUTH	Feet from the 1244	East/West line WEST	County LEA
¹² Dedicated Acres 160		¹³ Joint or Infill		¹⁴ Consolidation Code		¹⁵ Order No.			

No allowable will be assigned to this completion until all interests have been consolidated or a non-standard unit has been approved by the division.



State of New Mexico
Energy, Minerals & Natural Resources Department
OIL CONSERVATION DIVISION
1220 South St. Francis Dr.
Santa Fe, NM 87505

OCD - HOBBS
04/06/2020
RECEIVED

☐ AMENDED REPORT

WELL LOCATION AND ACREAGE DEDICATION PLAT

¹ API Number 30-025-47067		² Pool Code 97293	³ Pool Name Ojo Chiso; Bone Spring, South
⁴ Property Code 326211	⁵ Property Name PAC-MAN 36 FED COM		⁶ Well Number #302H
⁷ OGRID No. 372165	⁸ Operator Name CENTENNIAL RESOURCE PRODUCTION, LLC		⁹ Elevation 3387.2'

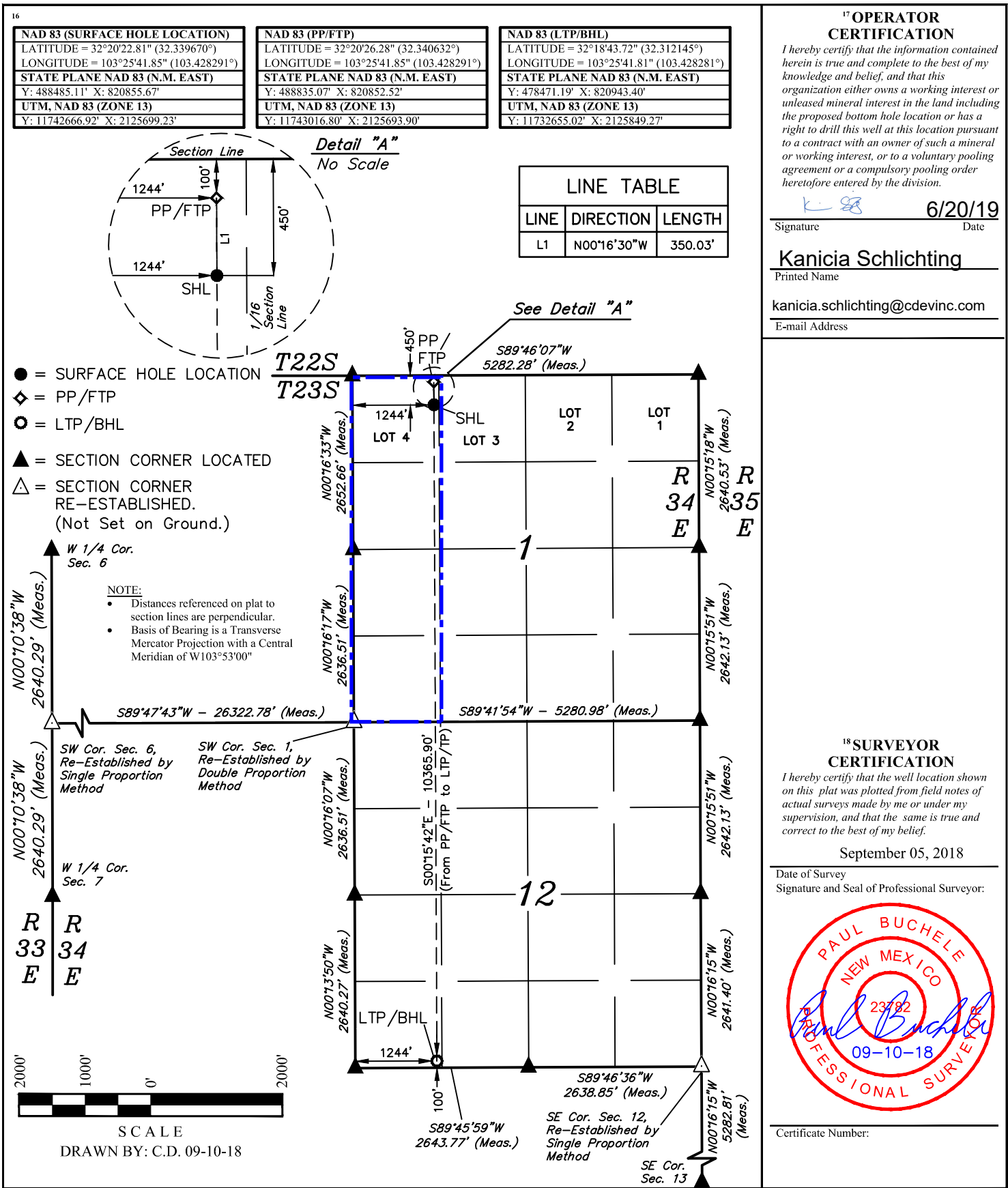
¹⁰Surface Location

UL or lot no. 4	Section 1	Township 23S	Range 34E	Lot Idn	Feet from the 450	North/South line NORTH	Feet from the 1244	East/West line WEST	County LEA
--------------------	--------------	-----------------	--------------	---------	----------------------	---------------------------	-----------------------	------------------------	---------------

¹¹ Bottom Hole Location If Different From Surface

UL or lot no. M	Section 12	Township 23S	Range 34E	Lot Idn	Feet from the 100	North/South line SOUTH	Feet from the 1244	East/West line WEST	County LEA
¹² Dedicated Acres 160.19		¹³ Joint or Infill		¹⁴ Consolidation Code		¹⁵ Order No.			

No allowable will be assigned to this completion until all interests have been consolidated or a non-standard unit has been approved by the division.



State of New Mexico
Energy, Minerals & Natural Resources Department
OIL CONSERVATION DIVISION
1220 South St. Francis Dr.
Santa Fe, NM 87505

☐ AMENDED REPORT

No allowable will be assigned to this completion until all interests have been consolidated or a non-standard unit has been approved by the division.

