

District I
1625 N. French Dr., Hobbs, NM 88240
District II
811 S. First St., Artesia, NM 88210
District III
1000 Rio Brazos Rd., Aztec, NM 87410
District IV
1220 S. St. Francis Dr., Santa Fe, NM 87505

State of New Mexico
Energy, Minerals & Natural Resources
Oil Conservation Division
1220 South St. Francis Dr.
Santa Fe, NM 87505

Form C-104
Revised August 1, 2011

Submit one copy to appropriate District Office

AMENDED REPORT

I. REQUEST FOR ALLOWABLE AND AUTHORIZATION TO TRANSPORT

¹ Operator name and Address COG Operating LLC 2208 W. Main Street Artesia, NM 88210		² OGRID Number 229137
		³ Reason for Filing Code/ Effective Date RT
⁴ API Number 30-025-45831	⁵ Pool Name JENNINGS; UPPER BONE SPRING SHALE	⁶ Pool Code 97838 <i>KZ</i>
⁷ Property Code 325390	⁸ Property Name Harrier Federal Com	⁹ Well Number 202H

II. ¹⁰ Surface Location

Ul or lot no.	Section	Township	Range	Lot Idn	Feet from the	North/South Line	Feet from the	East/West line	County
D	35	25S	32E		435	North	262	West	Lea

¹¹ Bottom Hole Location

Ul or lot no.	Section	Township	Range	Lot Idn	Feet from the	North/South Line	Feet from the	East/West line	County
M	2	26S	32E		50	South	233	West	Lea
¹² Lse Code F	¹³ Producing Method Code	¹⁴ Gas Connection Date	¹⁵ C-129 Permit Number		¹⁶ C-129 Effective Date		¹⁷ C-129 Expiration Date		

III. Oil and Gas Transporters

¹⁸ Transporter OGRID	¹⁹ Transporter Name and Address	²⁰ O/G/W
	ACC	O
298751	Lucid 3100 McKinnon Ste 800 Dallas, TX 75201	G
278421	Holly Refining and Marketing PO Box 159 Artesia, NM 88210	O

IV. Well Completion Data

²¹ Spud Date 6/23/19	²² Ready Date 5/12/20	²³ TD 19,461'	²⁴ PBTD 19,385'	²⁵ Perforations 9,571-19,290'	²⁶ DHC, MC
²⁷ Hole Size	²⁸ Casing & Tubing Size	²⁹ Depth Set		³⁰ Sacks Cement	
17 1/2"	13 3/8"	905'		725	
12 1/4"	9 5/8"	4,708'		1065	
8 3/4"	5 1/2"	19,450'		3665	
	2 7/8"	8,637'			

V. Well Test Data

³¹ Date New Oil	³² Gas Delivery Date	³³ Test Date	³⁴ Test Length	³⁵ Tbg. Pressure	³⁶ Csg. Pressure
³⁷ Choke Size	³⁸ Oil	³⁹ Water	⁴⁰ Gas		⁴¹ Test Method

⁴² I hereby certify that the rules of the Oil Conservation Division have been complied with and that the information given above is true and complete to the best of my knowledge and belief. Signature: <i>Amanda Avery</i>	OIL CONSERVATION DIVISION Approved by: <i>Patricia Martinez</i>
Printed name: Amanda Avery	Title: <i>LM II</i>
Title: Regulatory Analyst	Approval Date: <i>6/22/2020</i>
E-mail Address:	<i>RT EXPIRES 8/12/2020</i>
Date: 6/8/2020	Phone: 575-748-6962

DISTRICT I
1625 N. FRENCH DR., HOBBS, NM 88240
Phone: (575) 393-6161 Fax: (575) 393-0720

DISTRICT II
511 S. FIRST ST., ARTESIA, NM 88210
Phone: (575) 748-1283 Fax: (575) 748-9720

DISTRICT III
1000 RIO BRAZOS RD., AZTEC, NM 87410
Phone: (505) 334-6178 Fax: (505) 334-6170

DISTRICT IV
1220 S. ST. FRANCIS DR., SANTA FE, NM 87505
Phone: (505) 476-3460 Fax: (505) 476-3482

State of New Mexico
Energy, Minerals & Natural Resources Department
OIL CONSERVATION DIVISION
1220 SOUTH ST. FRANCIS DR.
Santa Fe, New Mexico 87505

Form C-102
Revised August 1, 2011
Submit one copy to appropriate
District Office

AMENDED REPORT
As Drilled

WELL LOCATION AND ACREAGE DEDICATION PLAT

API Number 30-025-45831	Pool Code 97838	Pool Name JENNINGS; UPPER BONE SPRING SHALE <i>KZ</i>
Property Code 325390	Property Name HARRIER FEDERAL COM	
OGRID No. 229137	Well Number 202H	
	Operator Name COG OPERATING, LLC	Elevation 3369.5'

Surface Location

UL or lot No.	Section	Township	Range	Lot Idn	Feet from the	North/South line	Feet from the	East/West line	County
D	35	25-S	32-E		435	NORTH	262	WEST	LEA

Bottom Hole Location If Different From Surface

UL or lot No.	Section	Township	Range	Lot Idn	Feet from the	North/South line	Feet from the	East/West line	County
M	2	26-S	32-E		50	SOUTH	233	WEST	LEA

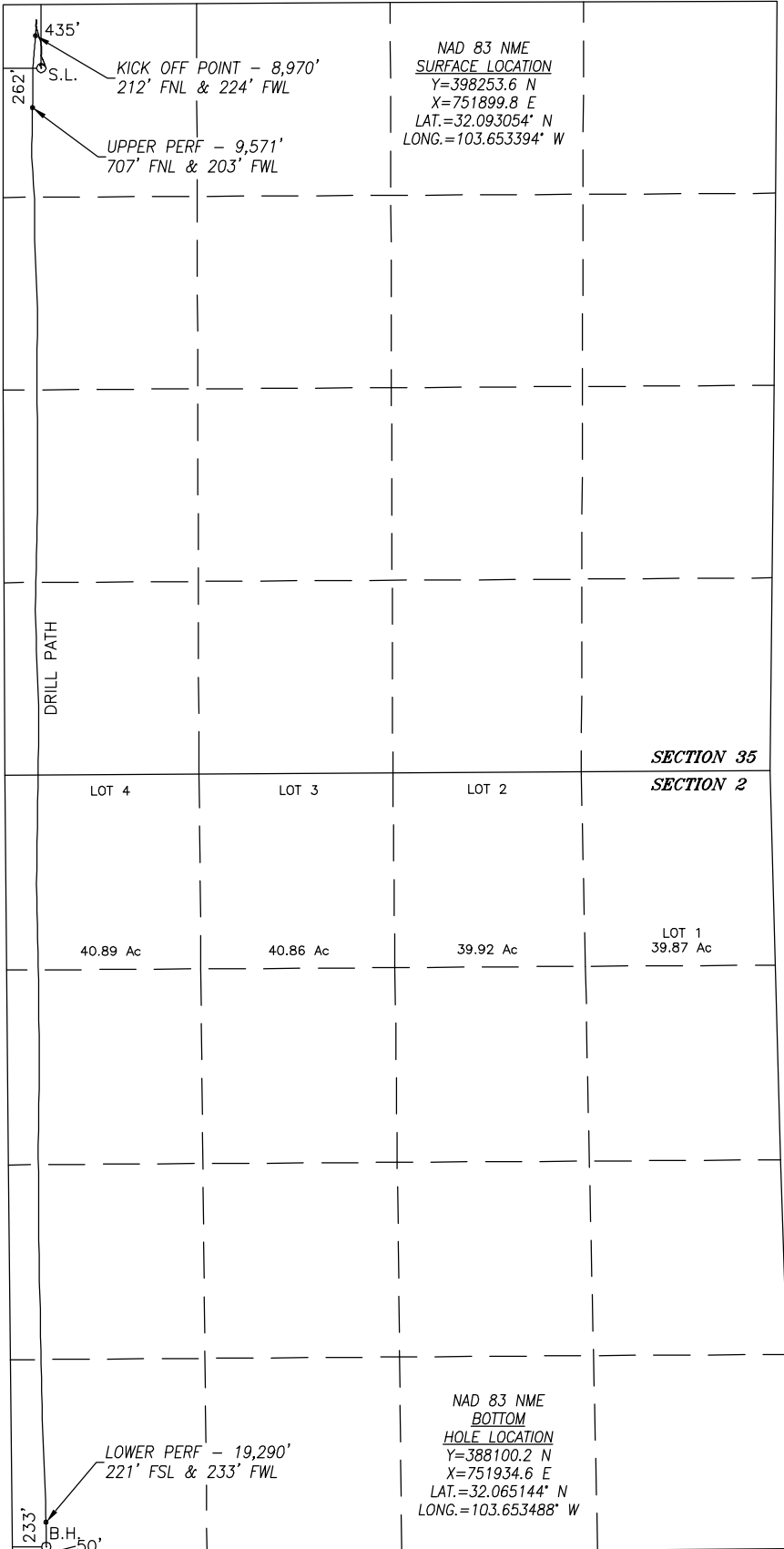
Dedicated Acres 640	Joint or Infill	Consolidation Code	Order No.
-------------------------------	-----------------	--------------------	-----------

NO ALLOWABLE WILL BE ASSIGNED TO THIS COMPLETION UNTIL ALL INTERESTS HAVE BEEN CONSOLIDATED
OR A NON-STANDARD UNIT HAS BEEN APPROVED BY THE DIVISION

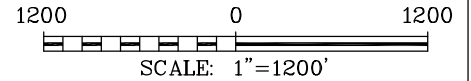
SEE PAGE 2

PAGE 1 OF 2
W.O. #20-766 DRAWN BY: WN

Property Code 325390	Property Name HARRIER FEDERAL COM	Well Number 202H
OGRID No. 229137	Operator Name COG OPERATING, LLC	Elevation 3369.5'



SURFACE INFO AND BOREPATH SHOWN HEREON IS BASED ON DIRECTIONAL SURVEY REPORT PROVIDED BY COG OPERATING, LLC FOR THE HARRIER FEDERAL COM #202H SUPPLIED TO HARCROW SURVEYING, LLC ON MAY 21, 2020



OPERATOR CERTIFICATION

I hereby certify that the information herein is true and complete to the best of my knowledge and belief, and that this organization either owns a working interest or unleased mineral interest in the land including the proposed bottom hole location or has a right to drill this well at this location pursuant to a contract with an owner of such mineral or working interest, or to a voluntary pooling agreement or a compulsory pooling order heretofore entered by the division.

6/8/20

Signature

Date

Amanda Avery

Printed Name

aavery@concho.com

E-mail Address

SURVEYOR CERTIFICATION

I hereby certify that the well location shown on this plat was plotted from field notes of actual surveys made by me or under my supervision, and that the same is true and correct to the best of my belief.

DEC. 12, 2018/OCT. 24, 2019

Date of Survey/Date of Geographic Survey

Signature & Seal of Professional Surveyor



Chad Harcrow 5/27/20

Certificate No. CHAD HARCROW 17777

Intent As Drilled

API #
30-025-45831

Operator Name:	Property Name:	Well Number
----------------	----------------	-------------

Kick Off Point (KOP)

UL	Section	Township	Range	Lot	Feet	From N/S	Feet	From E/W	County
Latitude					Longitude				NAD

First Take Point (FTP)

UL	Section	Township	Range	Lot	Feet	From N/S	Feet	From E/W	County
Latitude					Longitude				NAD

Last Take Point (LTP)

UL	Section	Township	Range	Lot	Feet	From N/S	Feet	From E/W	County
Latitude					Longitude				NAD

Is this well the defining well for the Horizontal Spacing Unit? No

Is this well an infill well? Yes

If infill is yes please provide API if available, Operator Name and well number for Defining well for Horizontal Spacing Unit.

API #
30-025-45832

Operator Name: COG Operating LLC	Property Name: Harrier Federal Com	Well Number 301H
-------------------------------------	---------------------------------------	---------------------

NORTHERN DELAWARE BASIN

LEA COUNTY, NM

BULLDOG

HARRIER FED COM #202H

OWB

Design: OWB

Standard Survey Report

24 October, 2019

Survey Report

Company: NORTHERN DELAWARE BASIN	Local Co-ordinate Reference: Well HARRIER FED COM #202H
Project: LEA COUNTY, NM	TVD Reference: RKB=3370+27' @ 3396.0usft
Site: BULLDOG	MD Reference: RKB=3370+27' @ 3396.0usft
Well: HARRIER FED COM #202H	North Reference: Grid
Wellbore: OWB	Survey Calculation Method: Minimum Curvature
Design: OWB	Database: EDM_Users

Project LEA COUNTY, NM	
Map System: US State Plane 1927 (Exact solution)	System Datum: Mean Sea Level
Geo Datum: NAD 1927 (NADCON CONUS)	
Map Zone: New Mexico East 3001	

Site BULLDOG		
Site Position:	Northing: 398,637.10 usft	Latitude: 32° 5' 36.820 N
From: Map	Easting: 741,887.40 usft	Longitude: 103° 33' 8.116 W
Position Uncertainty: 0.0 usft	Slot Radius: 13-3/16 "	Grid Convergence: 0.42 °

Well HARRIER FED COM #202H		
Well Position +N/-S 0.0 usft	Northing: 398,195.90 usft	Latitude: 32° 5' 34.545 N
+E/-W 0.0 usft	Easting: 710,713.50 usft	Longitude: 103° 39' 10.514 W
Position Uncertainty 3.0 usft	Wellhead Elevation: usft	Ground Level: 3,369.0 usft

Wellbore OWB					
Magnetics	Model Name	Sample Date	Declination (°)	Dip Angle (°)	Field Strength (nT)
	WMM2015	10/18/2018	6.87	59.89	47,699.35964943

Design OWB					
Audit Notes:					
Version: 1.0	Phase: ACTUAL	Tie On Depth: 0.0			
Vertical Section:	Depth From (TVD) (usft)	+N/-S (usft)	+E/-W (usft)	Direction (°)	
	0.0	0.0	0.0	179.99	

Survey Program		Date 10/24/2019		
From (usft)	To (usft)	Survey (Wellbore)	Tool Name	Description
100.0	8,512.0	GYRO-INTERMEDIATE (OWB)	Standard Keeper 104	Standard Wireline Keeper ver 1.0.4
8,598.0	19,461.0	MWD-CURVE/LATERAL (OWB)	MWD+IFR1+FDIR	OWSG MWD + IFR1 + FDIR Correction

Survey									
Measured Depth (usft)	Inclination (°)	Azimuth (°)	Vertical Depth (usft)	+N/-S (usft)	+E/-W (usft)	Vertical Section (usft)	Dogleg Rate (°/100usft)	Build Rate (°/100usft)	Turn Rate (°/100usft)
0.0	0.00	0.00	0.0	0.0	0.0	0.0	0.00	0.00	0.00
100.0	0.36	338.71	100.0	0.3	-0.1	-0.3	0.36	0.36	0.00
125.0	0.34	342.95	125.0	0.4	-0.2	-0.4	0.13	-0.08	16.96
150.0	0.56	4.48	150.0	0.6	-0.2	-0.6	1.10	0.88	86.12
175.0	0.64	10.99	175.0	0.9	-0.1	-0.9	0.42	0.32	26.04
200.0	0.72	14.92	200.0	1.2	-0.1	-1.2	0.37	0.32	15.72
225.0	0.70	6.98	225.0	1.5	0.0	-1.5	0.40	-0.08	-31.76
250.0	0.63	3.88	250.0	1.8	0.0	-1.8	0.31	-0.28	-12.40
275.0	0.53	1.73	275.0	2.0	0.0	-2.0	0.41	-0.40	-8.60
300.0	0.68	357.00	300.0	2.3	0.0	-2.3	0.63	0.60	-18.92

Survey Report

Company:	NORTHERN DELAWARE BASIN	Local Co-ordinate Reference:	Well HARRIER FED COM #202H
Project:	LEA COUNTY, NM	TVD Reference:	RKB=3370+27' @ 3396.0usft
Site:	BULLDOG	MD Reference:	RKB=3370+27' @ 3396.0usft
Well:	HARRIER FED COM #202H	North Reference:	Grid
Wellbore:	OWB	Survey Calculation Method:	Minimum Curvature
Design:	OWB	Database:	EDM_Users

Survey									
Measured Depth (usft)	Inclination (°)	Azimuth (°)	Vertical Depth (usft)	+N/-S (usft)	+E/-W (usft)	Vertical Section (usft)	Dogleg Rate (°/100usft)	Build Rate (°/100usft)	Turn Rate (°/100usft)
325.0	0.50	16.67	325.0	2.5	0.0	-2.5	1.07	-0.72	78.68
350.0	0.42	28.13	350.0	2.7	0.1	-2.7	0.49	-0.32	45.84
375.0	0.39	37.11	375.0	2.9	0.2	-2.9	0.28	-0.12	35.92
400.0	0.44	32.65	400.0	3.0	0.3	-3.0	0.24	0.20	-17.84
425.0	0.39	37.67	425.0	3.2	0.4	-3.2	0.25	-0.20	20.08
450.0	0.49	31.40	450.0	3.3	0.5	-3.3	0.44	0.40	-25.08
475.0	0.49	35.34	475.0	3.5	0.6	-3.5	0.13	0.00	15.76
500.0	0.62	26.92	500.0	3.7	0.8	-3.7	0.61	0.52	-33.68
525.0	0.59	20.30	525.0	4.0	0.9	-4.0	0.30	-0.12	-26.48
550.0	0.58	12.92	550.0	4.2	0.9	-4.2	0.30	-0.04	-29.52
575.0	0.54	3.95	575.0	4.4	1.0	-4.4	0.38	-0.16	-35.88
600.0	0.50	353.23	600.0	4.7	1.0	-4.7	0.42	-0.16	-42.88
625.0	0.47	348.70	625.0	4.9	0.9	-4.9	0.19	-0.12	-18.12
650.0	0.43	346.33	650.0	5.1	0.9	-5.1	0.18	-0.16	-9.48
675.0	0.40	349.13	675.0	5.2	0.9	-5.2	0.14	-0.12	11.20
700.0	0.53	355.22	700.0	5.4	0.8	-5.4	0.56	0.52	24.36
725.0	0.51	343.80	725.0	5.7	0.8	-5.7	0.42	-0.08	-45.68
750.0	0.53	348.78	750.0	5.9	0.7	-5.9	0.20	0.08	19.92
775.0	0.72	352.51	775.0	6.2	0.7	-6.2	0.78	0.76	14.92
800.0	0.73	349.16	800.0	6.5	0.7	-6.5	0.17	0.04	-13.40
825.0	0.82	338.80	825.0	6.8	0.6	-6.8	0.66	0.36	-41.44
850.0	0.86	338.41	850.0	7.1	0.4	-7.1	0.16	0.16	-1.56
875.0	0.80	325.04	875.0	7.5	0.3	-7.4	0.81	-0.24	-53.48
900.0	0.80	319.94	900.0	7.7	0.0	-7.7	0.28	0.00	-20.40
925.0	0.64	334.13	925.0	8.0	-0.1	-8.0	0.95	-0.64	56.76
950.0	0.56	321.39	950.0	8.2	-0.3	-8.2	0.62	-0.32	-50.96
975.0	0.70	312.23	975.0	8.4	-0.5	-8.4	0.69	0.56	-36.64
1,000.0	0.66	325.20	1,000.0	8.6	-0.7	-8.6	0.63	-0.16	51.88
1,025.0	0.61	311.89	1,025.0	8.8	-0.8	-8.8	0.62	-0.20	-53.24
1,050.0	0.71	309.63	1,049.9	9.0	-1.1	-9.0	0.41	0.40	-9.04
1,075.0	0.74	319.98	1,074.9	9.2	-1.3	-9.2	0.54	0.12	41.40
1,100.0	0.77	322.93	1,099.9	9.5	-1.5	-9.5	0.20	0.12	11.80
1,125.0	0.59	320.10	1,124.9	9.7	-1.7	-9.7	0.73	-0.72	-11.32
1,150.0	0.74	333.45	1,149.9	10.0	-1.8	-10.0	0.86	0.60	53.40
1,175.0	0.68	335.06	1,174.9	10.3	-2.0	-10.3	0.25	-0.24	6.44
1,200.0	0.69	327.65	1,199.9	10.5	-2.1	-10.5	0.36	0.04	-29.64
1,225.0	0.82	317.29	1,224.9	10.8	-2.3	-10.8	0.75	0.52	-41.44
1,250.0	0.87	317.33	1,249.9	11.0	-2.5	-11.0	0.20	0.20	0.16
1,275.0	0.88	319.50	1,274.9	11.3	-2.8	-11.3	0.14	0.04	8.68
1,300.0	0.91	312.77	1,299.9	11.6	-3.1	-11.6	0.44	0.12	-26.92
1,325.0	0.68	324.52	1,324.9	11.9	-3.3	-11.9	1.12	-0.92	47.00
1,350.0	0.83	325.21	1,349.9	12.1	-3.5	-12.1	0.60	0.60	2.76
1,375.0	0.92	330.97	1,374.9	12.5	-3.7	-12.5	0.50	0.36	23.04

Survey Report

Company:	NORTHERN DELAWARE BASIN	Local Co-ordinate Reference:	Well HARRIER FED COM #202H
Project:	LEA COUNTY, NM	TVD Reference:	RKB=3370+27' @ 3396.0usft
Site:	BULLDOG	MD Reference:	RKB=3370+27' @ 3396.0usft
Well:	HARRIER FED COM #202H	North Reference:	Grid
Wellbore:	OWB	Survey Calculation Method:	Minimum Curvature
Design:	OWB	Database:	EDM_Users

Survey										
Measured Depth (usft)	Inclination (°)	Azimuth (°)	Vertical Depth (usft)	+N/-S (usft)	+E/-W (usft)	Vertical Section (usft)	Dogleg Rate (°/100usft)	Build Rate (°/100usft)	Turn Rate (°/100usft)	
1,400.0	0.78	331.35	1,399.9	12.8	-3.9	-12.8	0.56	-0.56	1.52	
1,425.0	0.85	328.13	1,424.9	13.1	-4.1	-13.1	0.33	0.28	-12.88	
1,450.0	0.90	326.33	1,449.9	13.4	-4.3	-13.4	0.23	0.20	-7.20	
1,475.0	1.03	334.71	1,474.9	13.8	-4.5	-13.8	0.77	0.52	33.52	
1,500.0	1.02	327.10	1,499.9	14.2	-4.7	-14.2	0.55	-0.04	-30.44	
1,525.0	1.06	321.99	1,524.9	14.5	-4.9	-14.5	0.40	0.16	-20.44	
1,550.0	1.17	322.85	1,549.9	14.9	-5.2	-14.9	0.45	0.44	3.44	
1,575.0	1.24	322.64	1,574.9	15.3	-5.6	-15.3	0.28	0.28	-0.84	
1,600.0	1.31	314.29	1,599.9	15.8	-5.9	-15.8	0.79	0.28	-33.40	
1,625.0	1.18	309.05	1,624.9	16.1	-6.3	-16.1	0.69	-0.52	-20.96	
1,650.0	1.14	320.26	1,649.9	16.5	-6.7	-16.5	0.92	-0.16	44.84	
1,675.0	1.08	320.88	1,674.9	16.8	-7.0	-16.8	0.24	-0.24	2.48	
1,700.0	1.18	318.24	1,699.9	17.2	-7.3	-17.2	0.45	0.40	-10.56	
1,725.0	1.23	321.60	1,724.9	17.6	-7.7	-17.6	0.35	0.20	13.44	
1,750.0	0.99	323.13	1,749.9	18.0	-8.0	-18.0	0.97	-0.96	6.12	
1,775.0	0.55	6.38	1,774.8	18.3	-8.1	-18.3	2.80	-1.76	173.00	
1,800.0	0.99	63.80	1,799.8	18.5	-7.9	-18.5	3.34	1.76	229.68	
1,825.0	0.93	59.99	1,824.8	18.7	-7.5	-18.7	0.35	-0.24	-15.24	
1,850.0	0.82	73.74	1,849.8	18.9	-7.1	-18.9	0.94	-0.44	55.00	
1,875.0	0.89	68.53	1,874.8	19.0	-6.8	-19.0	0.42	0.28	-20.84	
1,900.0	0.87	77.82	1,899.8	19.1	-6.4	-19.1	0.58	-0.08	37.16	
1,925.0	0.80	66.67	1,924.8	19.2	-6.1	-19.2	0.71	-0.28	-44.60	
1,950.0	0.79	63.95	1,949.8	19.3	-5.8	-19.4	0.16	-0.04	-10.88	
1,975.0	0.77	55.95	1,974.8	19.5	-5.5	-19.5	0.44	-0.08	-32.00	
2,000.0	0.72	56.11	1,999.8	19.7	-5.2	-19.7	0.20	-0.20	0.64	
2,025.0	0.68	50.65	2,024.8	19.9	-5.0	-19.9	0.31	-0.16	-21.84	
2,050.0	0.79	46.87	2,049.8	20.1	-4.7	-20.1	0.48	0.44	-15.12	
2,075.0	0.66	52.31	2,074.8	20.3	-4.5	-20.3	0.59	-0.52	21.76	
2,100.0	0.68	32.53	2,099.8	20.5	-4.3	-20.5	0.92	0.08	-79.12	
2,125.0	0.54	35.96	2,124.8	20.7	-4.1	-20.7	0.58	-0.56	13.72	
2,150.0	0.58	47.15	2,149.8	20.9	-4.0	-20.9	0.46	0.16	44.76	
2,175.0	0.58	37.86	2,174.8	21.1	-3.8	-21.1	0.38	0.00	-37.16	
2,200.0	0.61	39.78	2,199.8	21.3	-3.6	-21.3	0.14	0.12	7.68	
2,225.0	0.59	42.52	2,224.8	21.5	-3.5	-21.5	0.14	-0.08	10.96	
2,250.0	0.68	29.71	2,249.8	21.7	-3.3	-21.7	0.67	0.36	-51.24	
2,275.0	0.50	30.45	2,274.8	21.9	-3.2	-21.9	0.72	-0.72	2.96	
2,300.0	0.58	32.53	2,299.8	22.1	-3.1	-22.1	0.33	0.32	8.32	
2,325.0	0.52	35.07	2,324.8	22.3	-2.9	-22.3	0.26	-0.24	10.16	
2,350.0	0.50	28.24	2,349.8	22.5	-2.8	-22.5	0.26	-0.08	-27.32	
2,375.0	0.49	47.07	2,374.8	22.7	-2.7	-22.7	0.65	-0.04	75.32	
2,400.0	0.43	34.46	2,399.8	22.9	-2.5	-22.9	0.47	-0.24	-50.44	
2,425.0	0.63	38.07	2,424.8	23.0	-2.4	-23.0	0.81	0.80	14.44	
2,450.0	0.57	35.66	2,449.8	23.3	-2.2	-23.3	0.26	-0.24	-9.64	

Survey Report

Company:	NORTHERN DELAWARE BASIN	Local Co-ordinate Reference:	Well HARRIER FED COM #202H
Project:	LEA COUNTY, NM	TVD Reference:	RKB=3370+27' @ 3396.0usft
Site:	BULLDOG	MD Reference:	RKB=3370+27' @ 3396.0usft
Well:	HARRIER FED COM #202H	North Reference:	Grid
Wellbore:	OWB	Survey Calculation Method:	Minimum Curvature
Design:	OWB	Database:	EDM_Users

Survey										
Measured Depth (usft)	Inclination (°)	Azimuth (°)	Vertical Depth (usft)	+N/-S (usft)	+E/-W (usft)	Vertical Section (usft)	Dogleg Rate (°/100usft)	Build Rate (°/100usft)	Turn Rate (°/100usft)	
2,475.0	0.62	34.88	2,474.8	23.5	-2.1	-23.5	0.20	0.20	-3.12	
2,500.0	0.43	43.57	2,499.8	23.6	-2.0	-23.6	0.82	-0.76	34.76	
2,525.0	0.41	32.04	2,524.8	23.8	-1.8	-23.8	0.35	-0.08	-46.12	
2,550.0	0.38	25.97	2,549.8	23.9	-1.8	-23.9	0.21	-0.12	-24.28	
2,575.0	0.47	25.18	2,574.8	24.1	-1.7	-24.1	0.36	0.36	-3.16	
2,600.0	0.30	24.14	2,599.8	24.3	-1.6	-24.3	0.68	-0.68	-4.16	
2,625.0	0.21	46.25	2,624.8	24.3	-1.5	-24.3	0.53	-0.36	88.44	
2,650.0	0.10	24.69	2,649.8	24.4	-1.5	-24.4	0.49	-0.44	-86.24	
2,675.0	0.13	24.48	2,674.8	24.4	-1.5	-24.4	0.12	0.12	-0.84	
2,700.0	0.13	22.63	2,699.8	24.5	-1.5	-24.5	0.02	0.00	-7.40	
2,725.0	0.04	291.52	2,724.8	24.5	-1.5	-24.5	0.55	-0.36	-364.44	
2,750.0	0.04	180.80	2,749.8	24.5	-1.5	-24.5	0.26	0.00	-442.88	
2,775.0	0.06	267.70	2,774.8	24.5	-1.5	-24.5	0.28	0.08	347.60	
2,800.0	0.11	249.11	2,799.8	24.5	-1.5	-24.5	0.23	0.20	-74.36	
2,825.0	0.15	296.04	2,824.8	24.5	-1.6	-24.5	0.44	0.16	187.72	
2,850.0	0.13	318.98	2,849.8	24.5	-1.6	-24.5	0.24	-0.08	91.76	
2,875.0	0.13	283.33	2,874.8	24.6	-1.7	-24.6	0.32	0.00	-142.60	
2,900.0	0.05	159.57	2,899.8	24.6	-1.7	-24.6	0.65	-0.32	-495.04	
2,925.0	0.16	244.49	2,924.8	24.5	-1.7	-24.5	0.65	0.44	339.68	
2,950.0	0.16	216.68	2,949.8	24.5	-1.8	-24.5	0.31	0.00	-111.24	
2,975.0	0.14	204.95	2,974.8	24.4	-1.8	-24.4	0.15	-0.08	-46.92	
3,000.0	0.08	163.86	2,999.8	24.4	-1.8	-24.4	0.38	-0.24	-164.36	
3,025.0	0.14	111.90	3,024.8	24.4	-1.8	-24.4	0.44	0.24	-207.84	
3,050.0	0.20	147.86	3,049.8	24.3	-1.7	-24.3	0.48	0.24	143.84	
3,075.0	0.29	136.60	3,074.8	24.2	-1.7	-24.2	0.41	0.36	-45.04	
3,100.0	0.32	123.89	3,099.8	24.2	-1.6	-24.2	0.30	0.12	-50.84	
3,125.0	0.46	105.06	3,124.8	24.1	-1.4	-24.1	0.75	0.56	-75.32	
3,150.0	0.72	92.40	3,149.8	24.1	-1.1	-24.1	1.16	1.04	-50.64	
3,175.0	0.79	104.95	3,174.8	24.0	-0.8	-24.0	0.72	0.28	50.20	
3,200.0	0.87	99.61	3,199.8	23.9	-0.5	-23.9	0.44	0.32	-21.36	
3,225.0	0.89	106.50	3,224.8	23.8	-0.1	-23.8	0.43	0.08	27.56	
3,250.0	0.96	106.63	3,249.8	23.7	0.3	-23.7	0.28	0.28	0.52	
3,275.0	1.11	103.78	3,274.8	23.6	0.7	-23.6	0.63	0.60	-11.40	
3,300.0	1.22	103.93	3,299.8	23.5	1.2	-23.5	0.44	0.44	0.60	
3,325.0	1.34	100.55	3,324.8	23.4	1.8	-23.4	0.57	0.48	-13.52	
3,350.0	1.43	97.98	3,349.8	23.3	2.4	-23.3	0.44	0.36	-10.28	
3,375.0	1.22	103.44	3,374.8	23.2	2.9	-23.2	0.98	-0.84	21.84	
3,400.0	1.30	96.84	3,399.7	23.1	3.5	-23.1	0.66	0.32	-26.40	
3,425.0	1.42	97.19	3,424.7	23.0	4.1	-23.0	0.48	0.48	1.40	
3,450.0	1.50	98.47	3,449.7	22.9	4.7	-22.9	0.35	0.32	5.12	
3,475.0	1.56	94.60	3,474.7	22.8	5.4	-22.8	0.48	0.24	-15.48	
3,500.0	1.83	88.32	3,499.7	22.8	6.1	-22.8	1.31	1.08	-25.12	
3,525.0	1.78	89.65	3,524.7	22.8	6.9	-22.8	0.26	-0.20	5.32	
3,550.0	1.78	88.74	3,549.7	22.8	7.7	-22.8	0.11	0.00	-3.64	

Survey Report

Company:	NORTHERN DELAWARE BASIN	Local Co-ordinate Reference:	Well HARRIER FED COM #202H
Project:	LEA COUNTY, NM	TVD Reference:	RKB=3370+27' @ 3396.0usft
Site:	BULLDOG	MD Reference:	RKB=3370+27' @ 3396.0usft
Well:	HARRIER FED COM #202H	North Reference:	Grid
Wellbore:	OWB	Survey Calculation Method:	Minimum Curvature
Design:	OWB	Database:	EDM_Users

Survey										
Measured Depth (usft)	Inclination (°)	Azimuth (°)	Vertical Depth (usft)	+N/-S (usft)	+E/-W (usft)	Vertical Section (usft)	Dogleg Rate (°/100usft)	Build Rate (°/100usft)	Turn Rate (°/100usft)	
3,575.0	1.72	93.08	3,574.7	22.8	8.4	-22.8	0.58	-0.24	17.36	
3,600.0	1.31	94.68	3,599.7	22.8	9.1	-22.8	1.65	-1.64	6.40	
3,625.0	0.49	93.33	3,624.7	22.8	9.5	-22.8	3.28	-3.28	-5.40	
3,650.0	0.37	114.94	3,649.7	22.7	9.6	-22.7	0.80	-0.48	86.44	
3,675.0	0.11	45.78	3,674.7	22.7	9.7	-22.7	1.39	-1.04	-276.64	
3,700.0	0.14	61.68	3,699.7	22.7	9.8	-22.7	0.18	0.12	63.60	
3,725.0	0.09	45.41	3,724.7	22.8	9.8	-22.8	0.24	-0.20	-65.08	
3,750.0	0.19	112.09	3,749.7	22.8	9.9	-22.8	0.70	0.40	266.72	
3,775.0	0.03	18.76	3,774.7	22.8	9.9	-22.8	0.78	-0.64	-373.32	
3,800.0	0.14	211.67	3,799.7	22.7	9.9	-22.7	0.68	0.44	-668.36	
3,825.0	0.13	197.07	3,824.7	22.7	9.9	-22.7	0.14	-0.04	-58.40	
3,850.0	0.25	197.81	3,849.7	22.6	9.9	-22.6	0.48	0.48	2.96	
3,875.0	0.19	124.39	3,874.7	22.5	9.9	-22.5	1.07	-0.24	-293.68	
3,900.0	0.03	276.11	3,899.7	22.5	9.9	-22.5	0.87	-0.64	606.88	
3,925.0	0.36	120.78	3,924.7	22.5	10.0	-22.5	1.55	1.32	-621.32	
3,950.0	0.43	109.11	3,949.7	22.4	10.1	-22.4	0.43	0.28	-46.68	
3,975.0	0.65	125.12	3,974.7	22.3	10.3	-22.3	1.06	0.88	64.04	
4,000.0	1.10	126.04	3,999.7	22.1	10.6	-22.1	1.80	1.80	3.68	
4,025.0	1.24	106.06	4,024.7	21.8	11.1	-21.8	1.71	0.56	-79.92	
4,050.0	1.35	109.86	4,049.6	21.7	11.6	-21.7	0.56	0.44	15.20	
4,075.0	1.28	115.74	4,074.6	21.4	12.1	-21.4	0.61	-0.28	23.52	
4,100.0	1.46	110.00	4,099.6	21.2	12.7	-21.2	0.90	0.72	-22.96	
4,125.0	1.59	115.24	4,124.6	21.0	13.3	-21.0	0.76	0.52	20.96	
4,150.0	1.53	111.01	4,149.6	20.7	13.9	-20.7	0.52	-0.24	-16.92	
4,175.0	1.67	115.06	4,174.6	20.4	14.6	-20.4	0.72	0.56	16.20	
4,200.0	2.04	113.23	4,199.6	20.1	15.3	-20.1	1.50	1.48	-7.32	
4,225.0	2.33	111.51	4,224.6	19.7	16.2	-19.7	1.19	1.16	-6.88	
4,250.0	2.66	112.79	4,249.5	19.3	17.2	-19.3	1.34	1.32	5.12	
4,275.0	2.88	113.38	4,274.5	18.8	18.3	-18.8	0.89	0.88	2.36	
4,300.0	2.97	114.92	4,299.5	18.3	19.5	-18.3	0.48	0.36	6.16	
4,325.0	3.10	115.45	4,324.5	17.8	20.7	-17.8	0.53	0.52	2.12	
4,350.0	3.34	111.67	4,349.4	17.2	22.0	-17.2	1.28	0.96	-15.12	
4,375.0	2.96	116.22	4,374.4	16.6	23.2	-16.6	1.82	-1.52	18.20	
4,400.0	2.99	116.59	4,399.3	16.1	24.4	-16.1	0.14	0.12	1.48	
4,425.0	2.82	120.47	4,424.3	15.5	25.5	-15.5	1.04	-0.68	15.52	
4,450.0	2.26	129.07	4,449.3	14.8	26.4	-14.8	2.70	-2.24	34.40	
4,475.0	1.33	151.10	4,474.3	14.3	26.9	-14.3	4.57	-3.72	88.12	
4,500.0	0.95	183.87	4,499.3	13.8	27.1	-13.8	2.96	-1.52	131.08	
4,525.0	0.86	197.11	4,524.3	13.4	27.0	-13.4	0.91	-0.36	52.96	
4,550.0	0.86	200.85	4,549.3	13.1	26.9	-13.1	0.22	0.00	14.96	
4,575.0	0.94	199.72	4,574.3	12.7	26.7	-12.7	0.33	0.32	-4.52	
4,600.0	0.88	207.12	4,599.3	12.3	26.6	-12.3	0.53	-0.24	29.60	
4,625.0	0.79	201.90	4,624.3	12.0	26.4	-12.0	0.47	-0.36	-20.88	

Survey Report

Company:	NORTHERN DELAWARE BASIN	Local Co-ordinate Reference:	Well HARRIER FED COM #202H
Project:	LEA COUNTY, NM	TVD Reference:	RKB=3370+27' @ 3396.0usft
Site:	BULLDOG	MD Reference:	RKB=3370+27' @ 3396.0usft
Well:	HARRIER FED COM #202H	North Reference:	Grid
Wellbore:	OWB	Survey Calculation Method:	Minimum Curvature
Design:	OWB	Database:	EDM_Users

Survey										
Measured Depth (usft)	Inclination (°)	Azimuth (°)	Vertical Depth (usft)	+N/-S (usft)	+E/-W (usft)	Vertical Section (usft)	Dogleg Rate (°/100usft)	Build Rate (°/100usft)	Turn Rate (°/100usft)	
4,650.0	0.94	205.41	4,649.2	11.7	26.3	-11.7	0.64	0.60	14.04	
4,675.0	0.84	195.46	4,674.2	11.3	26.1	-11.3	0.73	-0.40	-39.80	
4,700.0	0.95	198.62	4,699.2	10.9	26.0	-10.9	0.48	0.44	12.64	
4,725.0	0.77	195.15	4,724.2	10.6	25.9	-10.6	0.75	-0.72	-13.88	
4,750.0	0.76	188.79	4,749.2	10.2	25.8	-10.2	0.34	-0.04	-25.44	
4,775.0	0.47	188.27	4,774.2	10.0	25.8	-10.0	1.16	-1.16	-2.08	
4,800.0	0.28	222.67	4,799.2	9.8	25.7	-9.8	1.15	-0.76	137.60	
4,825.0	0.72	359.80	4,824.2	9.9	25.7	-9.9	3.78	1.76	548.52	
4,850.0	1.94	14.56	4,849.2	10.5	25.8	-10.5	5.03	4.88	59.04	
4,875.0	2.38	10.85	4,874.2	11.4	26.0	-11.4	1.85	1.76	-14.84	
4,900.0	2.53	8.10	4,899.2	12.5	26.2	-12.5	0.76	0.60	-11.00	
4,925.0	2.63	6.92	4,924.2	13.6	26.3	-13.6	0.45	0.40	-4.72	
4,950.0	2.73	4.82	4,949.1	14.8	26.5	-14.8	0.56	0.40	-8.40	
4,975.0	2.81	359.17	4,974.1	16.0	26.5	-16.0	1.14	0.32	-22.60	
5,000.0	3.43	345.77	4,999.1	17.3	26.3	-17.3	3.81	2.48	-53.60	
5,025.0	3.63	343.51	5,024.0	18.8	25.9	-18.8	0.97	0.80	-9.04	
5,050.0	3.62	341.06	5,049.0	20.3	25.4	-20.3	0.62	-0.04	-9.80	
5,075.0	3.72	342.99	5,073.9	21.8	24.9	-21.8	0.64	0.40	7.72	
5,100.0	3.78	341.51	5,098.9	23.4	24.4	-23.4	0.46	0.24	-5.92	
5,125.0	5.35	339.56	5,123.8	25.3	23.8	-25.2	6.31	6.28	-7.80	
5,150.0	6.01	340.03	5,148.7	27.6	22.9	-27.6	2.65	2.64	1.88	
5,175.0	6.24	339.51	5,173.5	30.1	22.0	-30.1	0.95	0.92	-2.08	
5,200.0	6.35	338.53	5,198.4	32.6	21.0	-32.6	0.62	0.44	-3.92	
5,225.0	6.18	338.66	5,223.2	35.2	20.0	-35.2	0.68	-0.68	0.52	
5,250.0	6.12	338.55	5,248.1	37.7	19.0	-37.7	0.24	-0.24	-0.44	
5,275.0	6.08	337.76	5,272.9	40.1	18.0	-40.1	0.37	-0.16	-3.16	
5,300.0	6.18	337.25	5,297.8	42.6	17.0	-42.6	0.46	0.40	-2.04	
5,325.0	6.14	335.88	5,322.6	45.1	15.9	-45.1	0.61	-0.16	-5.48	
5,350.0	6.06	337.69	5,347.5	47.5	14.9	-47.5	0.83	-0.32	7.24	
5,375.0	6.14	336.33	5,372.4	49.9	13.9	-49.9	0.66	0.32	-5.44	
5,400.0	6.13	336.63	5,397.2	52.4	12.8	-52.4	0.13	-0.04	1.20	
5,425.0	5.95	335.76	5,422.1	54.8	11.7	-54.8	0.81	-0.72	-3.48	
5,450.0	5.96	335.84	5,446.9	57.2	10.7	-57.2	0.05	0.04	0.32	
5,475.0	5.77	334.83	5,471.8	59.5	9.6	-59.5	0.86	-0.76	-4.04	
5,500.0	5.71	334.22	5,496.7	61.8	8.5	-61.7	0.34	-0.24	-2.44	
5,525.0	5.59	333.70	5,521.6	64.0	7.4	-64.0	0.52	-0.48	-2.08	
5,550.0	5.54	333.17	5,546.5	66.1	6.4	-66.1	0.29	-0.20	-2.12	
5,575.0	5.09	335.47	5,571.3	68.2	5.4	-68.2	1.99	-1.80	9.20	
5,600.0	4.79	336.91	5,596.3	70.2	4.5	-70.2	1.30	-1.20	5.76	
5,625.0	4.74	338.30	5,621.2	72.1	3.7	-72.1	0.50	-0.20	5.56	
5,650.0	4.59	337.94	5,646.1	74.0	2.9	-74.0	0.61	-0.60	-1.44	
5,675.0	4.51	338.42	5,671.0	75.8	2.2	-75.8	0.35	-0.32	1.92	
5,700.0	4.65	337.46	5,695.9	77.7	1.5	-77.7	0.64	0.56	-3.84	

Survey Report

Company:	NORTHERN DELAWARE BASIN	Local Co-ordinate Reference:	Well HARRIER FED COM #202H
Project:	LEA COUNTY, NM	TVD Reference:	RKB=3370+27' @ 3396.0usft
Site:	BULLDOG	MD Reference:	RKB=3370+27' @ 3396.0usft
Well:	HARRIER FED COM #202H	North Reference:	Grid
Wellbore:	OWB	Survey Calculation Method:	Minimum Curvature
Design:	OWB	Database:	EDM_Users

Survey										
Measured Depth (usft)	Inclination (°)	Azimuth (°)	Vertical Depth (usft)	+N/-S (usft)	+E/-W (usft)	Vertical Section (usft)	Dogleg Rate (°/100usft)	Build Rate (°/100usft)	Turn Rate (°/100usft)	
5,725.0	4.59	339.29	5,720.8	79.6	0.7	-79.6	0.64	-0.24	7.32	
5,750.0	4.65	341.38	5,745.8	81.5	0.0	-81.5	0.71	0.24	8.36	
5,775.0	4.75	351.18	5,770.7	83.4	-0.4	-83.4	3.23	0.40	39.20	
5,800.0	5.09	5.77	5,795.6	85.6	-0.5	-85.6	5.17	1.36	58.36	
5,825.0	4.86	9.54	5,820.5	87.7	-0.2	-87.7	1.60	-0.92	15.08	
5,850.0	5.22	10.71	5,845.4	89.9	0.2	-89.9	1.50	1.44	4.68	
5,875.0	5.09	9.98	5,870.3	92.1	0.6	-92.1	0.58	-0.52	-2.92	
5,900.0	5.03	8.11	5,895.2	94.3	0.9	-94.3	0.70	-0.24	-7.48	
5,925.0	5.22	9.17	5,920.1	96.5	1.3	-96.5	0.85	0.76	4.24	
5,950.0	5.78	5.07	5,945.0	98.8	1.6	-98.8	2.74	2.24	-16.40	
5,975.0	6.06	2.55	5,969.8	101.4	1.7	-101.4	1.53	1.12	-10.08	
6,000.0	6.10	1.85	5,994.7	104.1	1.8	-104.1	0.34	0.16	-2.80	
6,025.0	6.03	1.82	6,019.6	106.7	1.9	-106.7	0.28	-0.28	-0.12	
6,050.0	6.19	1.86	6,044.4	109.4	2.0	-109.4	0.64	0.64	0.16	
6,075.0	6.43	0.21	6,069.3	112.1	2.0	-112.1	1.20	0.96	-6.60	
6,100.0	6.23	359.42	6,094.1	114.9	2.0	-114.9	0.87	-0.80	-3.16	
6,125.0	6.34	359.90	6,119.0	117.6	2.0	-117.6	0.49	0.44	1.92	
6,150.0	6.16	359.70	6,143.8	120.3	2.0	-120.3	0.73	-0.72	-0.80	
6,175.0	6.13	359.20	6,168.7	123.0	2.0	-123.0	0.25	-0.12	-2.00	
6,200.0	6.32	359.36	6,193.5	125.7	2.0	-125.7	0.76	0.76	0.64	
6,225.0	6.36	358.62	6,218.4	128.5	1.9	-128.5	0.36	0.16	-2.96	
6,250.0	6.22	358.01	6,243.2	131.2	1.8	-131.2	0.62	-0.56	-2.44	
6,275.0	6.10	358.26	6,268.1	133.9	1.7	-133.9	0.49	-0.48	1.00	
6,300.0	6.05	357.17	6,292.9	136.5	1.6	-136.5	0.50	-0.20	-4.36	
6,325.0	5.88	355.66	6,317.8	139.1	1.5	-139.1	0.93	-0.68	-6.04	
6,350.0	5.87	356.47	6,342.7	141.7	1.3	-141.7	0.33	-0.04	3.24	
6,375.0	5.68	355.86	6,367.6	144.2	1.1	-144.2	0.80	-0.76	-2.44	
6,400.0	5.61	355.05	6,392.4	146.6	0.9	-146.6	0.42	-0.28	-3.24	
6,425.0	5.61	354.33	6,417.3	149.1	0.7	-149.1	0.28	0.00	-2.88	
6,450.0	5.61	353.37	6,442.2	151.5	0.4	-151.5	0.38	0.00	-3.84	
6,475.0	5.29	353.51	6,467.1	153.9	0.2	-153.9	1.28	-1.28	0.56	
6,500.0	5.20	353.48	6,492.0	156.1	-0.1	-156.1	0.36	-0.36	-0.12	
6,525.0	5.15	353.11	6,516.9	158.4	-0.4	-158.4	0.24	-0.20	-1.48	
6,550.0	4.99	353.13	6,541.8	160.6	-0.6	-160.6	0.64	-0.64	0.08	
6,575.0	4.88	351.97	6,566.7	162.7	-0.9	-162.7	0.59	-0.44	-4.64	
6,600.0	4.69	351.54	6,591.6	164.8	-1.2	-164.8	0.77	-0.76	-1.72	
6,625.0	4.56	352.08	6,616.5	166.8	-1.5	-166.8	0.55	-0.52	2.16	
6,650.0	4.49	350.87	6,641.4	168.7	-1.8	-168.7	0.47	-0.28	-4.84	
6,675.0	4.48	350.37	6,666.4	170.6	-2.1	-170.6	0.16	-0.04	-2.00	
6,700.0	4.57	350.70	6,691.3	172.6	-2.4	-172.6	0.37	0.36	1.32	
6,725.0	4.44	350.75	6,716.2	174.5	-2.7	-174.5	0.52	-0.52	0.20	
6,750.0	4.45	349.94	6,741.1	176.4	-3.1	-176.4	0.25	0.04	-3.24	
6,775.0	4.79	346.92	6,766.0	178.4	-3.5	-178.4	1.67	1.36	-12.08	
6,800.0	5.17	345.78	6,791.0	180.5	-4.0	-180.5	1.57	1.52	-4.56	

Survey Report

Company:	NORTHERN DELAWARE BASIN	Local Co-ordinate Reference:	Well HARRIER FED COM #202H
Project:	LEA COUNTY, NM	TVD Reference:	RKB=3370+27' @ 3396.0usft
Site:	BULLDOG	MD Reference:	RKB=3370+27' @ 3396.0usft
Well:	HARRIER FED COM #202H	North Reference:	Grid
Wellbore:	OWB	Survey Calculation Method:	Minimum Curvature
Design:	OWB	Database:	EDM_Users

Survey									
Measured Depth (usft)	Inclination (°)	Azimuth (°)	Vertical Depth (usft)	+N/-S (usft)	+E/-W (usft)	Vertical Section (usft)	Dogleg Rate (°/100usft)	Build Rate (°/100usft)	Turn Rate (°/100usft)
6,825.0	5.05	345.66	6,815.9	182.7	-4.5	-182.7	0.48	-0.48	-0.48
6,850.0	5.09	345.72	6,840.8	184.8	-5.1	-184.8	0.16	0.16	0.24
6,875.0	5.08	344.76	6,865.7	186.9	-5.6	-186.9	0.34	-0.04	-3.84
6,900.0	5.10	342.08	6,890.6	189.1	-6.3	-189.1	0.95	0.08	-10.72
6,925.0	5.16	340.08	6,915.5	191.2	-7.0	-191.2	0.75	0.24	-8.00
6,950.0	4.87	339.72	6,940.4	193.2	-7.7	-193.2	1.17	-1.16	-1.44
6,975.0	4.88	339.39	6,965.3	195.2	-8.5	-195.2	0.12	0.04	-1.32
7,000.0	4.83	338.15	6,990.2	197.2	-9.3	-197.2	0.46	-0.20	-4.96
7,025.0	4.86	336.55	7,015.1	199.2	-10.1	-199.2	0.55	0.12	-6.40
7,050.0	5.25	337.94	7,040.0	201.2	-10.9	-201.2	1.64	1.56	5.56
7,075.0	6.49	343.16	7,064.9	203.6	-11.8	-203.6	5.40	4.96	20.88
7,100.0	6.83	345.26	7,089.7	206.4	-12.5	-206.4	1.67	1.36	8.40
7,125.0	7.02	345.49	7,114.5	209.3	-13.3	-209.3	0.77	0.76	0.92
7,150.0	7.25	345.46	7,139.3	212.3	-14.1	-212.3	0.92	0.92	-0.12
7,175.0	7.23	345.36	7,164.1	215.4	-14.9	-215.4	0.09	-0.08	-0.40
7,200.0	6.87	344.34	7,188.9	218.3	-15.7	-218.3	1.52	-1.44	-4.08
7,225.0	6.47	344.77	7,213.8	221.1	-16.5	-221.1	1.61	-1.60	1.72
7,250.0	6.16	343.77	7,238.6	223.8	-17.2	-223.8	1.32	-1.24	-4.00
7,275.0	6.25	342.69	7,263.5	226.4	-18.0	-226.4	0.59	0.36	-4.32
7,300.0	6.10	343.03	7,288.3	228.9	-18.8	-228.9	0.62	-0.60	1.36
7,325.0	5.97	344.05	7,313.2	231.4	-19.5	-231.4	0.67	-0.52	4.08
7,350.0	5.93	343.57	7,338.0	233.9	-20.2	-233.9	0.26	-0.16	-1.92
7,375.0	5.81	344.00	7,362.9	236.4	-20.9	-236.4	0.51	-0.48	1.72
7,400.0	5.72	343.79	7,387.8	238.8	-21.6	-238.8	0.37	-0.36	-0.84
7,425.0	5.68	343.36	7,412.7	241.2	-22.3	-241.2	0.23	-0.16	-1.72
7,450.0	5.36	342.43	7,437.5	243.5	-23.1	-243.5	1.33	-1.28	-3.72
7,475.0	5.40	342.89	7,462.4	245.7	-23.8	-245.7	0.24	0.16	1.84
7,500.0	5.41	342.99	7,487.3	248.0	-24.4	-248.0	0.05	0.04	0.40
7,525.0	5.24	341.09	7,512.2	250.2	-25.2	-250.2	0.98	-0.68	-7.60
7,550.0	5.33	340.87	7,537.1	252.4	-25.9	-252.4	0.37	0.36	-0.88
7,575.0	4.92	340.65	7,562.0	254.5	-26.6	-254.5	1.64	-1.64	-0.88
7,600.0	4.84	340.64	7,586.9	256.5	-27.4	-256.5	0.32	-0.32	-0.04
7,625.0	4.75	340.12	7,611.8	258.4	-28.1	-258.4	0.40	-0.36	-2.08
7,650.0	4.63	340.82	7,636.8	260.4	-28.7	-260.4	0.53	-0.48	2.80
7,675.0	4.60	340.01	7,661.7	262.3	-29.4	-262.3	0.29	-0.12	-3.24
7,700.0	4.55	338.80	7,686.6	264.1	-30.1	-264.1	0.43	-0.20	-4.84
7,725.0	4.62	341.52	7,711.5	266.0	-30.8	-266.0	0.91	0.28	10.88
7,750.0	4.68	345.22	7,736.4	267.9	-31.4	-267.9	1.22	0.24	14.80
7,775.0	4.76	346.63	7,761.3	269.9	-31.9	-269.9	0.56	0.32	5.64
7,800.0	4.78	345.61	7,786.3	272.0	-32.4	-272.0	0.35	0.08	-4.08
7,825.0	4.29	344.84	7,811.2	273.9	-32.9	-273.9	1.98	-1.96	-3.08
7,850.0	4.29	343.69	7,836.1	275.7	-33.4	-275.7	0.34	0.00	-4.60
7,875.0	4.23	343.37	7,861.0	277.4	-33.9	-277.5	0.26	-0.24	-1.28

Survey Report

Company:	NORTHERN DELAWARE BASIN	Local Co-ordinate Reference:	Well HARRIER FED COM #202H
Project:	LEA COUNTY, NM	TVD Reference:	RKB=3370+27' @ 3396.0usft
Site:	BULLDOG	MD Reference:	RKB=3370+27' @ 3396.0usft
Well:	HARRIER FED COM #202H	North Reference:	Grid
Wellbore:	OWB	Survey Calculation Method:	Minimum Curvature
Design:	OWB	Database:	EDM_Users

Survey										
Measured Depth (usft)	Inclination (°)	Azimuth (°)	Vertical Depth (usft)	+N/-S (usft)	+E/-W (usft)	Vertical Section (usft)	Dogleg Rate (°/100usft)	Build Rate (°/100usft)	Turn Rate (°/100usft)	
7,900.0	4.06	342.11	7,886.0	279.2	-34.4	-279.2	0.77	-0.68	-5.04	
7,925.0	3.98	339.76	7,910.9	280.8	-35.0	-280.8	0.73	-0.32	-9.40	
7,950.0	3.81	338.22	7,935.9	282.4	-35.6	-282.4	0.80	-0.68	-6.16	
7,975.0	3.86	336.84	7,960.8	284.0	-36.3	-284.0	0.42	0.20	-5.52	
8,000.0	4.09	338.91	7,985.7	285.6	-36.9	-285.6	1.08	0.92	8.28	
8,025.0	5.06	351.53	8,010.7	287.5	-37.4	-287.5	5.57	3.88	50.48	
8,050.0	6.37	4.67	8,035.5	290.0	-37.4	-290.0	7.37	5.24	52.56	
8,075.0	6.32	7.42	8,060.4	292.7	-37.2	-292.7	1.23	-0.20	11.00	
8,100.0	6.21	8.22	8,085.2	295.4	-36.8	-295.4	0.56	-0.44	3.20	
8,125.0	6.09	8.60	8,110.1	298.1	-36.4	-298.1	0.51	-0.48	1.52	
8,150.0	6.12	7.64	8,134.9	300.7	-36.0	-300.7	0.43	0.12	-3.84	
8,175.0	5.91	7.45	8,159.8	303.3	-35.7	-303.3	0.84	-0.84	-0.76	
8,200.0	5.74	7.14	8,184.7	305.8	-35.3	-305.8	0.69	-0.68	-1.24	
8,225.0	5.59	6.59	8,209.6	308.3	-35.1	-308.3	0.64	-0.60	-2.20	
8,250.0	5.49	5.13	8,234.4	310.7	-34.8	-310.7	0.69	-0.40	-5.84	
8,275.0	5.27	5.19	8,259.3	313.0	-34.6	-313.0	0.88	-0.88	0.24	
8,300.0	5.10	4.72	8,284.2	315.2	-34.4	-315.2	0.70	-0.68	-1.88	
8,325.0	5.03	4.11	8,309.1	317.4	-34.2	-317.4	0.35	-0.28	-2.44	
8,350.0	4.94	3.12	8,334.0	319.6	-34.1	-319.6	0.50	-0.36	-3.96	
8,375.0	4.87	4.20	8,358.9	321.7	-34.0	-321.7	0.46	-0.28	4.32	
8,400.0	4.50	3.10	8,383.9	323.8	-33.8	-323.8	1.52	-1.48	-4.40	
8,425.0	3.50	3.37	8,408.8	325.5	-33.7	-325.5	4.00	-4.00	1.08	
8,450.0	2.41	1.17	8,433.8	326.8	-33.7	-326.8	4.38	-4.36	-8.80	
8,475.0	1.94	358.59	8,458.7	327.8	-33.7	-327.8	1.92	-1.88	-10.32	
8,500.0	1.73	355.46	8,483.7	328.6	-33.7	-328.6	0.93	-0.84	-12.52	
8,512.0	1.78	358.49	8,495.7	328.9	-33.7	-328.9	0.88	0.42	25.25	
8,598.0	1.76	357.94	8,581.7	331.6	-33.8	-331.6	0.03	-0.02	-0.64	
8,692.0	3.03	188.51	8,675.7	330.6	-34.2	-330.6	5.08	1.35	-180.24	
8,723.0	7.66	182.82	8,706.5	327.7	-34.5	-327.7	15.01	14.94	-18.35	
8,755.0	12.31	179.54	8,738.0	322.1	-34.5	-322.1	14.63	14.53	-10.25	
8,786.0	16.64	178.77	8,768.0	314.4	-34.4	-314.4	13.98	13.97	-2.48	
8,817.0	21.53	179.33	8,797.3	304.3	-34.3	-304.3	15.79	15.77	1.81	
8,849.0	26.61	180.81	8,826.5	291.2	-34.3	-291.2	15.99	15.88	4.63	
8,880.0	31.51	182.64	8,853.6	276.2	-34.8	-276.2	16.06	15.81	5.90	
8,912.0	36.56	184.41	8,880.1	258.3	-35.9	-258.3	16.08	15.78	5.53	
8,943.0	38.20	184.50	8,904.8	239.5	-37.3	-239.6	5.29	5.29	0.29	
8,974.0	40.22	185.52	8,928.8	220.0	-39.1	-220.0	6.84	6.52	3.29	
9,006.0	39.76	185.99	8,953.3	199.6	-41.1	-199.6	1.72	-1.44	1.47	
9,037.0	42.05	186.19	8,976.7	179.4	-43.3	-179.4	7.40	7.39	0.65	
9,069.0	44.55	185.48	9,000.0	157.6	-45.5	-157.6	7.96	7.81	-2.22	
9,100.0	47.50	185.28	9,021.5	135.3	-47.6	-135.3	9.53	9.52	-0.65	
9,131.0	49.74	184.86	9,042.0	112.2	-49.6	-112.2	7.30	7.23	-1.35	
9,163.0	53.82	184.20	9,061.8	87.1	-51.6	-87.1	12.85	12.75	-2.06	

Survey Report

Company:	NORTHERN DELAWARE BASIN	Local Co-ordinate Reference:	Well HARRIER FED COM #202H
Project:	LEA COUNTY, NM	TVD Reference:	RKB=3370+27' @ 3396.0usft
Site:	BULLDOG	MD Reference:	RKB=3370+27' @ 3396.0usft
Well:	HARRIER FED COM #202H	North Reference:	Grid
Wellbore:	OWB	Survey Calculation Method:	Minimum Curvature
Design:	OWB	Database:	EDM_Users

Survey									
Measured Depth (usft)	Inclination (°)	Azimuth (°)	Vertical Depth (usft)	+N/-S (usft)	+E/-W (usft)	Vertical Section (usft)	Dogleg Rate (°/100usft)	Build Rate (°/100usft)	Turn Rate (°/100usft)
9,194.0	58.59	183.96	9,079.1	61.4	-53.5	-61.4	15.40	15.39	-0.77
9,226.0	59.30	183.84	9,095.6	34.1	-55.3	-34.1	2.24	2.22	-0.38
9,257.0	58.75	183.74	9,111.5	7.6	-57.1	-7.6	1.80	-1.77	-0.32
9,288.0	57.91	182.99	9,127.8	-18.8	-58.6	18.8	3.40	-2.71	-2.42
9,320.0	59.15	179.39	9,144.5	-46.1	-59.2	46.1	10.35	3.88	-11.25
9,351.0	59.89	178.19	9,160.2	-72.8	-58.6	72.8	4.10	2.39	-3.87
9,383.0	60.31	177.73	9,176.2	-100.5	-57.6	100.5	1.81	1.31	-1.44
9,414.0	61.35	179.05	9,191.3	-127.5	-56.9	127.5	5.01	3.35	4.26
9,445.0	63.96	181.12	9,205.5	-155.1	-56.9	155.1	10.30	8.42	6.68
9,477.0	64.81	181.54	9,219.4	-183.9	-57.6	183.9	2.91	2.66	1.31
9,508.0	67.61	181.40	9,231.9	-212.3	-58.3	212.3	9.04	9.03	-0.45
9,540.0	71.99	181.31	9,242.9	-242.3	-59.0	242.3	13.69	13.69	-0.28
9,571.0	73.91	181.49	9,252.0	-271.9	-59.7	271.9	6.22	6.19	0.58
9,602.0	77.29	181.18	9,259.7	-301.9	-60.4	301.9	10.95	10.90	-1.00
9,634.0	80.37	181.47	9,265.9	-333.3	-61.2	333.3	9.67	9.63	0.91
9,665.0	80.98	181.29	9,270.9	-363.9	-61.9	363.9	2.05	1.97	-0.58
9,697.0	84.20	180.57	9,275.1	-395.6	-62.4	395.6	10.31	10.06	-2.25
9,728.0	89.45	181.07	9,276.8	-426.6	-62.9	426.6	17.01	16.94	1.61
9,759.0	92.31	181.58	9,276.3	-457.5	-63.6	457.5	9.37	9.23	1.65
9,822.0	89.29	181.19	9,275.4	-520.5	-65.1	520.5	4.83	-4.79	-0.62
9,917.0	88.25	177.10	9,277.5	-615.5	-63.7	615.5	4.44	-1.09	-4.31
10,011.0	88.69	176.65	9,280.0	-709.3	-58.6	709.3	0.67	0.47	-0.48
10,105.0	89.40	175.84	9,281.5	-803.1	-52.4	803.1	1.15	0.76	-0.86
10,199.0	88.24	177.88	9,283.5	-896.9	-47.3	896.9	2.50	-1.23	2.17
10,293.0	89.40	180.13	9,285.4	-990.9	-45.6	990.9	2.69	1.23	2.39
10,387.0	90.53	180.26	9,285.5	-1,084.9	-46.0	1,084.9	1.21	1.20	0.14
10,481.0	90.73	179.31	9,284.4	-1,178.9	-45.6	1,178.8	1.03	0.21	-1.01
10,575.0	88.28	177.66	9,285.2	-1,272.8	-43.1	1,272.8	3.14	-2.61	-1.76
10,669.0	89.10	177.10	9,287.4	-1,366.7	-38.8	1,366.7	1.06	0.87	-0.60
10,763.0	90.67	177.74	9,287.6	-1,460.6	-34.6	1,460.6	1.80	1.67	0.68
10,857.0	89.11	177.76	9,287.8	-1,554.5	-30.9	1,554.5	1.66	-1.66	0.02
10,951.0	85.20	178.01	9,292.4	-1,648.3	-27.4	1,648.3	4.17	-4.16	0.27
11,045.0	85.81	180.49	9,299.8	-1,742.0	-26.2	1,742.0	2.71	0.65	2.64
11,140.0	91.01	180.94	9,302.4	-1,836.9	-27.4	1,836.9	5.49	5.47	0.47
11,234.0	92.63	181.35	9,299.4	-1,930.9	-29.3	1,930.9	1.78	1.72	0.44
11,328.0	88.26	179.81	9,298.7	-2,024.8	-30.2	2,024.8	4.93	-4.65	-1.64
11,422.0	88.15	179.76	9,301.7	-2,118.8	-29.9	2,118.8	0.13	-0.12	-0.05
11,516.0	88.05	179.26	9,304.8	-2,212.7	-29.1	2,212.7	0.54	-0.11	-0.53
11,610.0	88.57	179.34	9,307.5	-2,306.7	-27.9	2,306.7	0.56	0.55	0.09
11,704.0	87.91	178.75	9,310.4	-2,400.6	-26.4	2,400.6	0.94	-0.70	-0.63
11,798.0	88.11	179.04	9,313.7	-2,494.5	-24.5	2,494.5	0.37	0.21	0.31
11,892.0	88.80	180.59	9,316.2	-2,588.5	-24.2	2,588.5	1.80	0.73	1.65
11,986.0	88.39	180.35	9,318.5	-2,682.5	-25.0	2,682.5	0.51	-0.44	-0.26
12,080.0	88.48	180.08	9,321.1	-2,776.4	-25.4	2,776.4	0.30	0.10	-0.29

Survey Report

Company:	NORTHERN DELAWARE BASIN	Local Co-ordinate Reference:	Well HARRIER FED COM #202H
Project:	LEA COUNTY, NM	TVD Reference:	RKB=3370+27' @ 3396.0usft
Site:	BULLDOG	MD Reference:	RKB=3370+27' @ 3396.0usft
Well:	HARRIER FED COM #202H	North Reference:	Grid
Wellbore:	OWB	Survey Calculation Method:	Minimum Curvature
Design:	OWB	Database:	EDM_Users

Survey									
Measured Depth (usft)	Inclination (°)	Azimuth (°)	Vertical Depth (usft)	+N/-S (usft)	+E/-W (usft)	Vertical Section (usft)	Dogleg Rate (°/100usft)	Build Rate (°/100usft)	Turn Rate (°/100usft)
12,174.0	88.15	180.21	9,323.9	-2,870.4	-25.6	2,870.4	0.38	-0.35	0.14
12,268.0	87.93	180.51	9,327.1	-2,964.3	-26.2	2,964.3	0.40	-0.23	0.32
12,363.0	87.26	180.73	9,331.1	-3,059.2	-27.2	3,059.2	0.74	-0.71	0.23
12,457.0	89.82	180.86	9,333.5	-3,153.2	-28.5	3,153.2	2.73	2.72	0.14
12,551.0	90.08	181.49	9,333.5	-3,247.2	-30.4	3,247.2	0.73	0.28	0.67
12,645.0	90.03	181.66	9,333.5	-3,341.1	-33.0	3,341.1	0.19	-0.05	0.18
12,739.0	89.49	181.29	9,333.8	-3,435.1	-35.5	3,435.1	0.70	-0.57	-0.39
12,834.0	89.14	181.34	9,335.0	-3,530.1	-37.6	3,530.1	0.37	-0.37	0.05
12,928.0	88.88	180.97	9,336.6	-3,624.0	-39.5	3,624.0	0.48	-0.28	-0.39
13,022.0	89.78	179.79	9,337.7	-3,718.0	-40.1	3,718.0	1.58	0.96	-1.26
13,116.0	90.98	177.80	9,337.1	-3,812.0	-38.2	3,812.0	2.47	1.28	-2.12
13,210.0	91.08	178.43	9,335.4	-3,905.9	-35.1	3,905.9	0.68	0.11	0.67
13,304.0	91.32	178.33	9,333.4	-3,999.9	-32.4	3,999.9	0.28	0.26	-0.11
13,398.0	91.61	177.68	9,331.0	-4,093.8	-29.2	4,093.8	0.76	0.31	-0.69
13,492.0	91.65	177.09	9,328.3	-4,187.7	-24.9	4,187.7	0.63	0.04	-0.63
13,586.0	89.72	178.75	9,327.2	-4,281.6	-21.5	4,281.6	2.71	-2.05	1.77
13,680.0	89.28	179.18	9,328.0	-4,375.6	-19.8	4,375.6	0.65	-0.47	0.46
13,774.0	88.70	178.63	9,329.7	-4,469.5	-18.0	4,469.5	0.85	-0.62	-0.59
13,868.0	88.99	180.70	9,331.6	-4,563.5	-17.4	4,563.5	2.22	0.31	2.20
13,963.0	89.10	180.82	9,333.2	-4,658.5	-18.7	4,658.5	0.17	0.12	0.13
14,057.0	88.92	181.14	9,334.8	-4,752.5	-20.3	4,752.5	0.39	-0.19	0.34
14,151.0	88.79	180.99	9,336.7	-4,846.4	-22.0	4,846.4	0.21	-0.14	-0.16
14,246.0	88.00	180.84	9,339.3	-4,941.4	-23.5	4,941.4	0.85	-0.83	-0.16
14,340.0	87.83	180.97	9,342.8	-5,035.3	-25.0	5,035.3	0.23	-0.18	0.14
14,434.0	87.86	180.60	9,346.3	-5,129.2	-26.3	5,129.2	0.39	0.03	-0.39
14,528.0	87.25	180.54	9,350.3	-5,223.1	-27.2	5,223.1	0.65	-0.65	-0.06
14,622.0	87.02	180.95	9,355.0	-5,317.0	-28.5	5,317.0	0.50	-0.24	0.44
14,717.0	87.26	181.09	9,359.7	-5,411.9	-30.2	5,411.9	0.29	0.25	0.15
14,811.0	87.07	180.82	9,364.4	-5,505.7	-31.7	5,505.7	0.35	-0.20	-0.29
14,905.0	88.22	179.63	9,368.3	-5,599.7	-32.1	5,599.7	1.76	1.22	-1.27
14,999.0	91.08	178.88	9,368.8	-5,693.6	-30.9	5,693.6	3.15	3.04	-0.80
15,093.0	91.76	178.70	9,366.5	-5,787.6	-28.9	5,787.6	0.75	0.72	-0.19
15,188.0	92.53	179.17	9,362.9	-5,882.5	-27.1	5,882.5	0.95	0.81	0.49
15,282.0	90.77	178.34	9,360.2	-5,976.4	-25.1	5,976.4	2.07	-1.87	-0.88
15,376.0	91.16	178.46	9,358.7	-6,070.4	-22.5	6,070.4	0.43	0.41	0.13
15,470.0	90.31	178.99	9,357.5	-6,164.4	-20.4	6,164.4	1.07	-0.90	0.56
15,564.0	90.67	179.05	9,356.6	-6,258.3	-18.8	6,258.3	0.39	0.38	0.06
15,659.0	90.33	179.70	9,355.8	-6,353.3	-17.7	6,353.3	0.77	-0.36	0.68
15,753.0	88.74	179.45	9,356.6	-6,447.3	-17.0	6,447.3	1.71	-1.69	-0.27
15,847.0	89.06	179.73	9,358.4	-6,541.3	-16.3	6,541.3	0.45	0.34	0.30
15,941.0	89.36	179.42	9,359.7	-6,635.3	-15.7	6,635.3	0.46	0.32	-0.33
16,035.0	86.77	180.12	9,362.9	-6,729.2	-15.3	6,729.2	2.85	-2.76	0.74
16,129.0	86.98	179.82	9,368.0	-6,823.1	-15.2	6,823.1	0.39	0.22	-0.32

Survey Report

Company:	NORTHERN DELAWARE BASIN	Local Co-ordinate Reference:	Well HARRIER FED COM #202H
Project:	LEA COUNTY, NM	TVD Reference:	RKB=3370+27' @ 3396.0usft
Site:	BULLDOG	MD Reference:	RKB=3370+27' @ 3396.0usft
Well:	HARRIER FED COM #202H	North Reference:	Grid
Wellbore:	OWB	Survey Calculation Method:	Minimum Curvature
Design:	OWB	Database:	EDM_Users

Survey										
Measured Depth (usft)	Inclination (°)	Azimuth (°)	Vertical Depth (usft)	+N/-S (usft)	+E/-W (usft)	Vertical Section (usft)	Dogleg Rate (°/100usft)	Build Rate (°/100usft)	Turn Rate (°/100usft)	
16,224.0	87.57	180.26	9,372.5	-6,918.0	-15.3	6,918.0	0.77	0.62	0.46	
16,318.0	87.74	180.27	9,376.3	-7,011.9	-15.7	7,011.9	0.18	0.18	0.01	
16,412.0	88.43	180.51	9,379.5	-7,105.8	-16.4	7,105.8	0.78	0.73	0.26	
16,506.0	88.32	181.08	9,382.2	-7,199.8	-17.7	7,199.8	0.62	-0.12	0.61	
16,600.0	88.30	180.72	9,384.9	-7,293.7	-19.1	7,293.7	0.38	-0.02	-0.38	
16,694.0	88.33	181.02	9,387.7	-7,387.7	-20.6	7,387.7	0.32	0.03	0.32	
16,789.0	90.52	179.23	9,388.6	-7,482.7	-20.8	7,482.7	2.98	2.31	-1.88	
16,883.0	91.08	179.28	9,387.3	-7,576.7	-19.6	7,576.7	0.60	0.60	0.05	
16,977.0	91.32	179.70	9,385.4	-7,670.6	-18.7	7,670.6	0.51	0.26	0.45	
17,072.0	91.94	179.71	9,382.7	-7,765.6	-18.2	7,765.6	0.65	0.65	0.01	
17,166.0	92.13	179.19	9,379.3	-7,859.5	-17.3	7,859.5	0.59	0.20	-0.55	
17,260.0	89.13	179.93	9,378.3	-7,953.5	-16.6	7,953.5	3.29	-3.19	0.79	
17,355.0	89.21	179.65	9,379.7	-8,048.5	-16.3	8,048.5	0.31	0.08	-0.29	
17,449.0	89.04	179.31	9,381.1	-8,142.5	-15.4	8,142.5	0.40	-0.18	-0.36	
17,543.0	88.56	178.95	9,383.1	-8,236.4	-14.0	8,236.4	0.64	-0.51	-0.38	
17,638.0	88.38	178.79	9,385.6	-8,331.4	-12.1	8,331.4	0.25	-0.19	-0.17	
17,732.0	87.99	178.37	9,388.6	-8,425.3	-9.8	8,425.3	0.61	-0.41	-0.45	
17,826.0	87.63	178.00	9,392.2	-8,519.2	-6.8	8,519.2	0.55	-0.38	-0.39	
17,921.0	90.51	179.82	9,393.7	-8,614.2	-5.0	8,614.2	3.59	3.03	1.92	
18,015.0	90.34	179.47	9,393.0	-8,708.2	-4.4	8,708.2	0.41	-0.18	-0.37	
18,109.0	89.98	179.14	9,392.8	-8,802.1	-3.3	8,802.1	0.52	-0.38	-0.35	
18,204.0	89.67	178.84	9,393.0	-8,897.1	-1.6	8,897.1	0.45	-0.33	-0.32	
18,298.0	89.16	178.65	9,394.0	-8,991.1	0.5	8,991.1	0.58	-0.54	-0.20	
18,392.0	88.96	178.50	9,395.5	-9,085.1	2.8	9,085.1	0.27	-0.21	-0.16	
18,486.0	92.25	178.48	9,394.6	-9,179.0	5.3	9,179.0	3.50	3.50	-0.02	
18,580.0	91.99	178.26	9,391.1	-9,272.9	7.9	9,272.9	0.36	-0.28	-0.23	
18,674.0	91.96	177.83	9,387.8	-9,366.8	11.1	9,366.8	0.46	-0.03	-0.46	
18,769.0	91.56	177.83	9,384.9	-9,461.7	14.7	9,461.7	0.42	-0.42	0.00	
18,862.0	91.55	177.68	9,382.4	-9,554.6	18.4	9,554.6	0.16	-0.01	-0.16	
18,957.0	91.10	177.41	9,380.2	-9,649.5	22.5	9,649.5	0.55	-0.47	-0.28	
19,051.0	90.42	176.95	9,379.0	-9,743.3	27.1	9,743.3	0.87	-0.72	-0.49	
19,145.0	89.42	178.80	9,379.1	-9,837.3	30.6	9,837.3	2.24	-1.06	1.97	
19,239.0	89.03	179.80	9,380.4	-9,931.3	31.7	9,931.3	1.14	-0.41	1.06	
19,334.0	88.42	179.23	9,382.5	-10,026.2	32.5	10,026.2	0.88	-0.64	-0.60	
19,407.0	88.38	179.15	9,384.5	-10,099.2	33.5	10,099.2	0.12	-0.05	-0.11	
FINAL MWD SVY @ 19407'MD										
19,411.2	88.38	179.15	9,384.6	-10,103.4	33.6	10,103.4	0.00	0.00	0.00	
LTP @ 19411.2'MD / 9384.6'TVD										
19,461.0	88.38	179.15	9,386.0	-10,153.2	34.3	10,153.2	0.00	0.00	0.00	
PTD @ 19461'MD										

Survey Report

Company: NORTHERN DELAWARE BASIN	Local Co-ordinate Reference: Well HARRIER FED COM #202H
Project: LEA COUNTY, NM	TVD Reference: RKB=3370+27' @ 3396.0usft
Site: BULLDOG	MD Reference: RKB=3370+27' @ 3396.0usft
Well: HARRIER FED COM #202H	North Reference: Grid
Wellbore: OWB	Survey Calculation Method: Minimum Curvature
Design: OWB	Database: EDM_Users

Design Annotations

Measured Depth (usft)	Vertical Depth (usft)	Local Coordinates		Comment
		+N/-S (usft)	+E/-W (usft)	
19,407.0	9,384.5	-10,099.2	33.5	FINAL MWD SVY @ 19407'MD
19,411.2	9,384.6	-10,103.4	33.6	LTP @ 19411.2'MD / 9384.6'TVD
19,461.0	9,386.0	-10,153.2	34.3	PTD @ 19461'MD

Checked By: _____	Approved By: _____	Date: _____
-------------------	--------------------	-------------